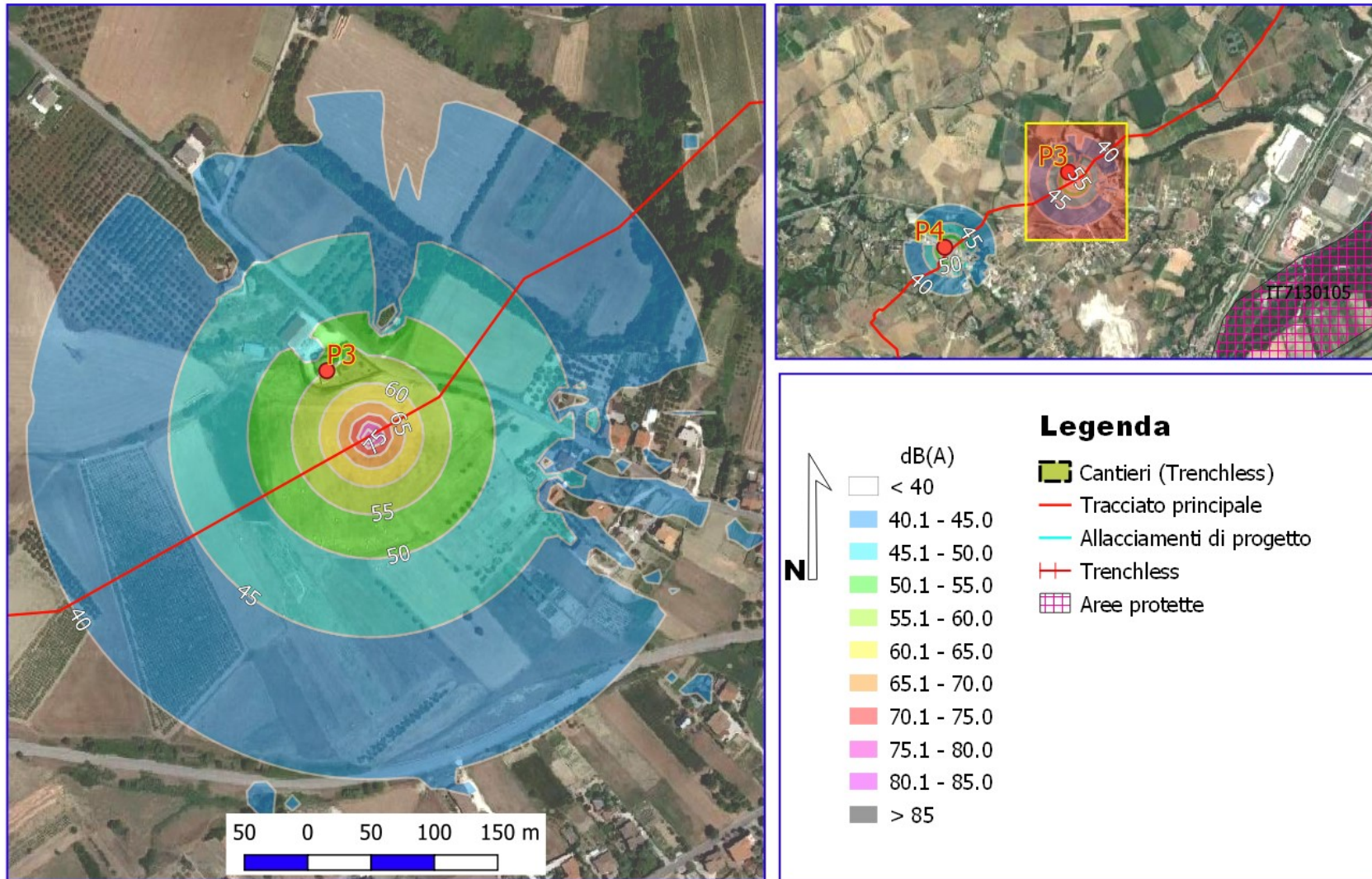


<b>RIFACIMENTO METANODOTTO CHIETI - RIETI DN 400 (16"), DP 24 bar e OPERE CONNESSE</b>						
<b>STUDIOACUSTICO</b>						
N° Documento: 03492-ENV-RE-100-0204	Foglio 1 di 36	Rev.:				RE-RU-1204
		0A				

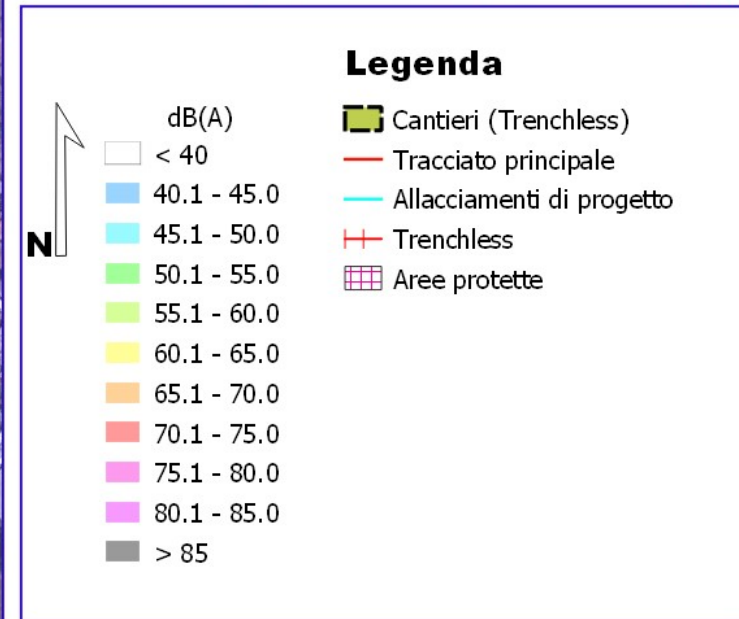
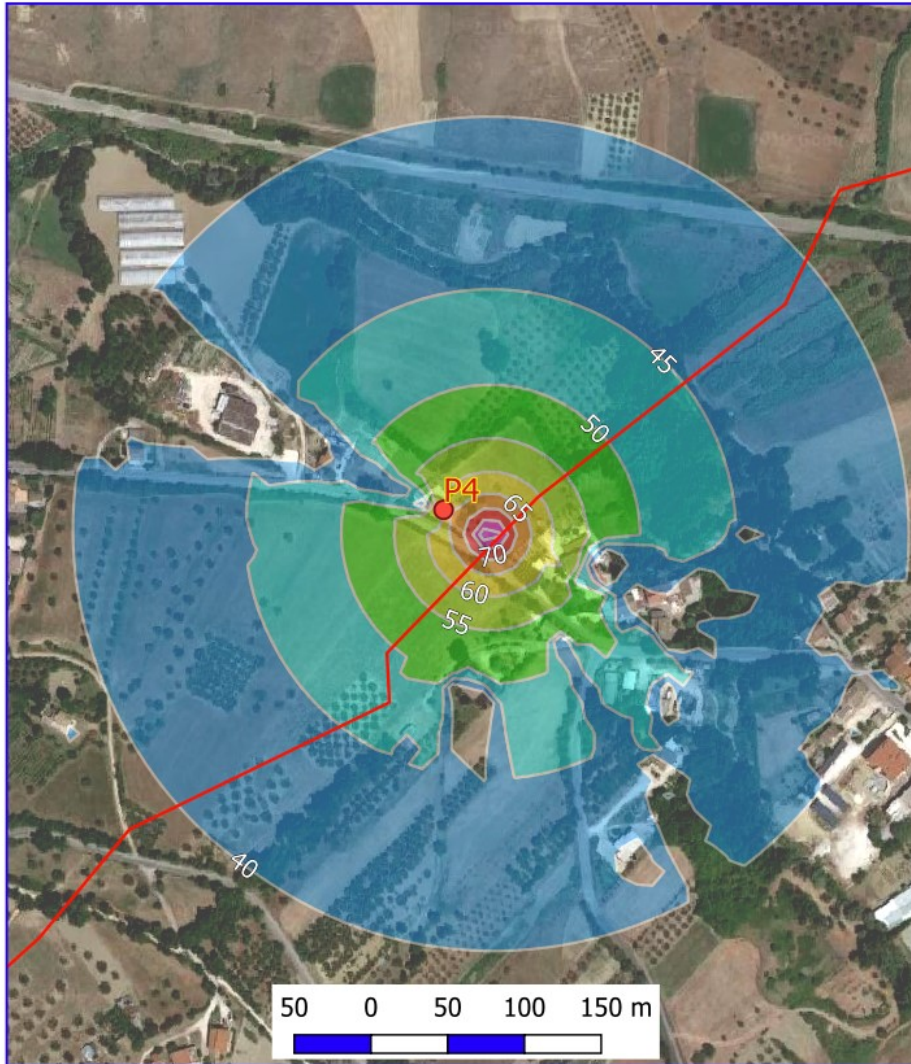
## ALLEGATO 3b

Mappe cromatiche delle isofoniche simulate durante  
la fase di cantiere - Leq Emissione

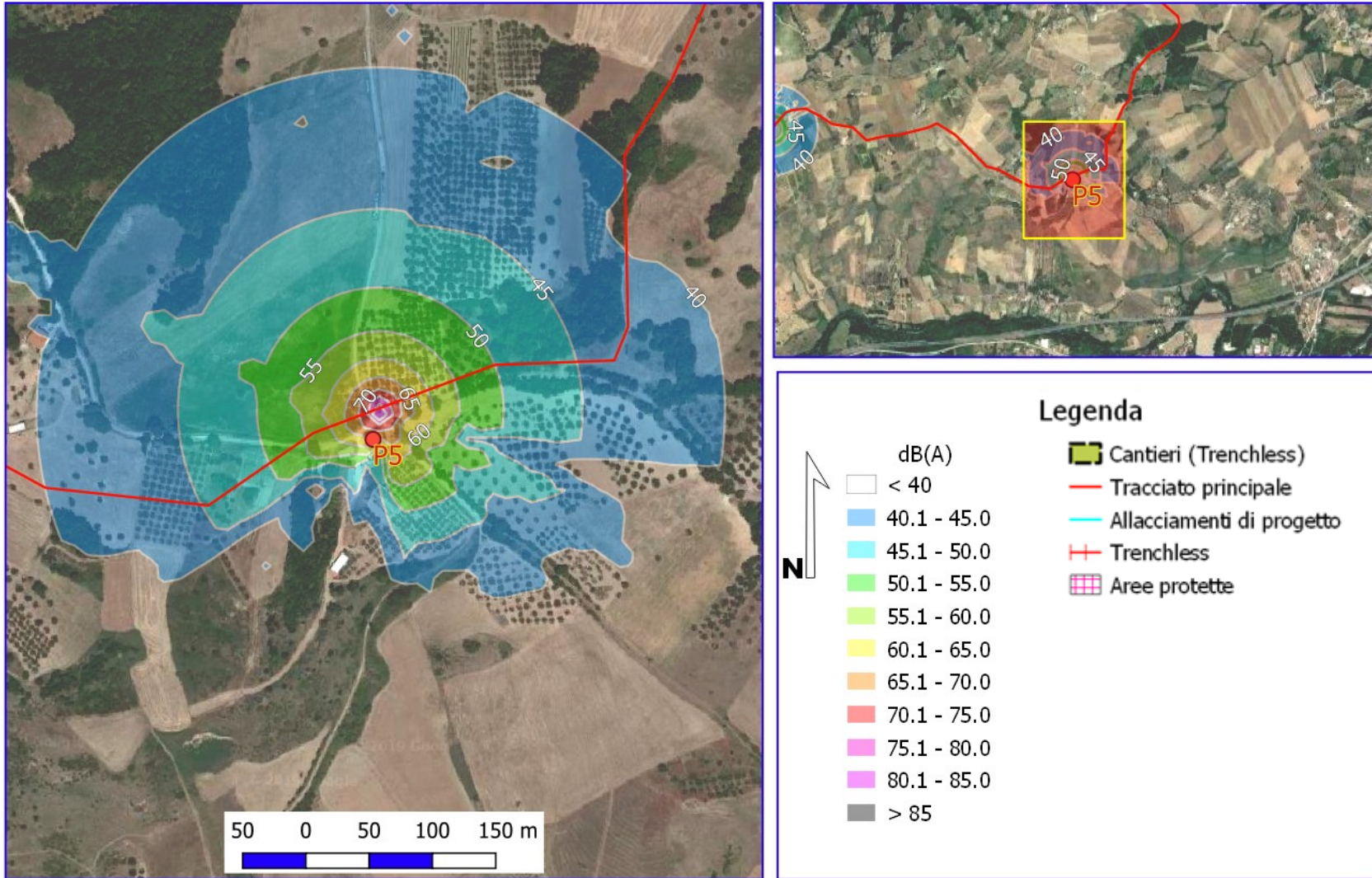
**Rifacimento Metanodotto Chieti - Rieti DN 400 (16"), DP 24 bar**  
**MAPPE ISOFONICHE EMISSIONE ACUSTICA RECETTORE P3 PERIODO DIURNO**



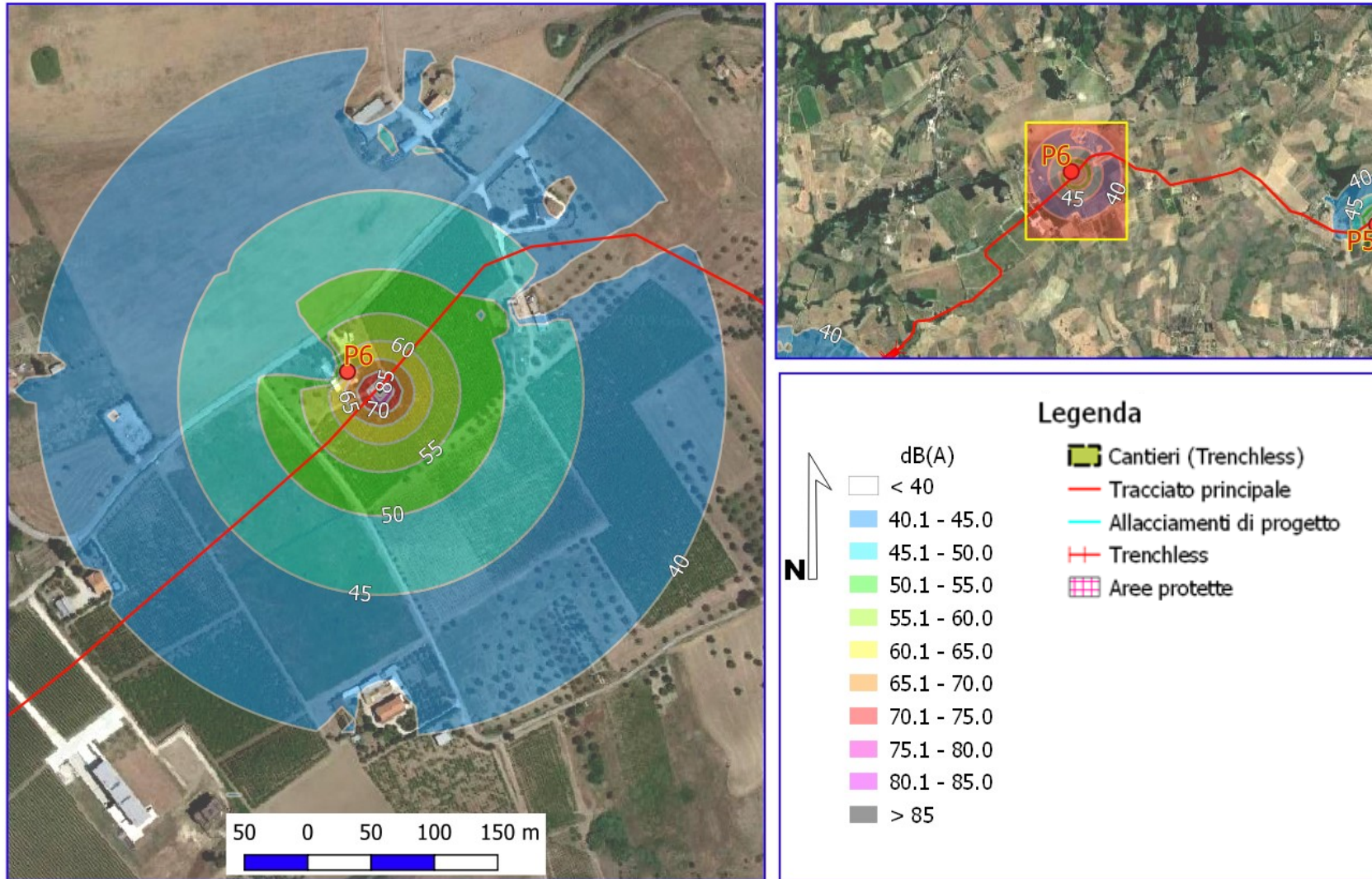
**Rifacimento Metanodotto Chieti - Rieti DN 400 (16"), DP 24 bar**  
**MAPPE ISOFONICHE EMISSIONE ACUSTICA RECETTORE P4 PERIODO DIURNO**



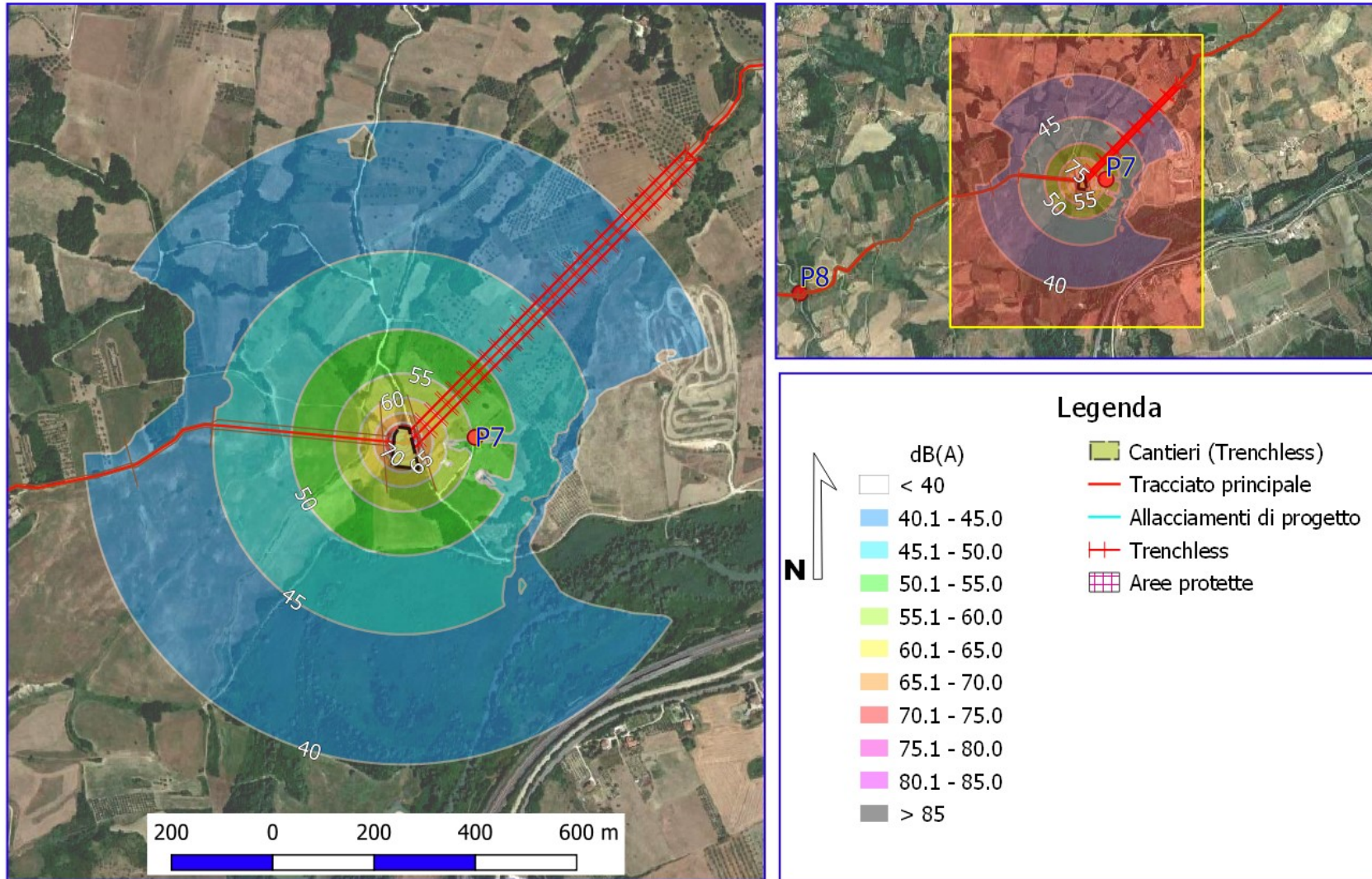
**Rifacimento Metanodotto Chieti - Rieti DN 400 (16"), DP 24 bar**  
**MAPPE ISOFONICHE EMISSIONE ACUSTICA RECETTORE P5 PERIODO DIURNO**



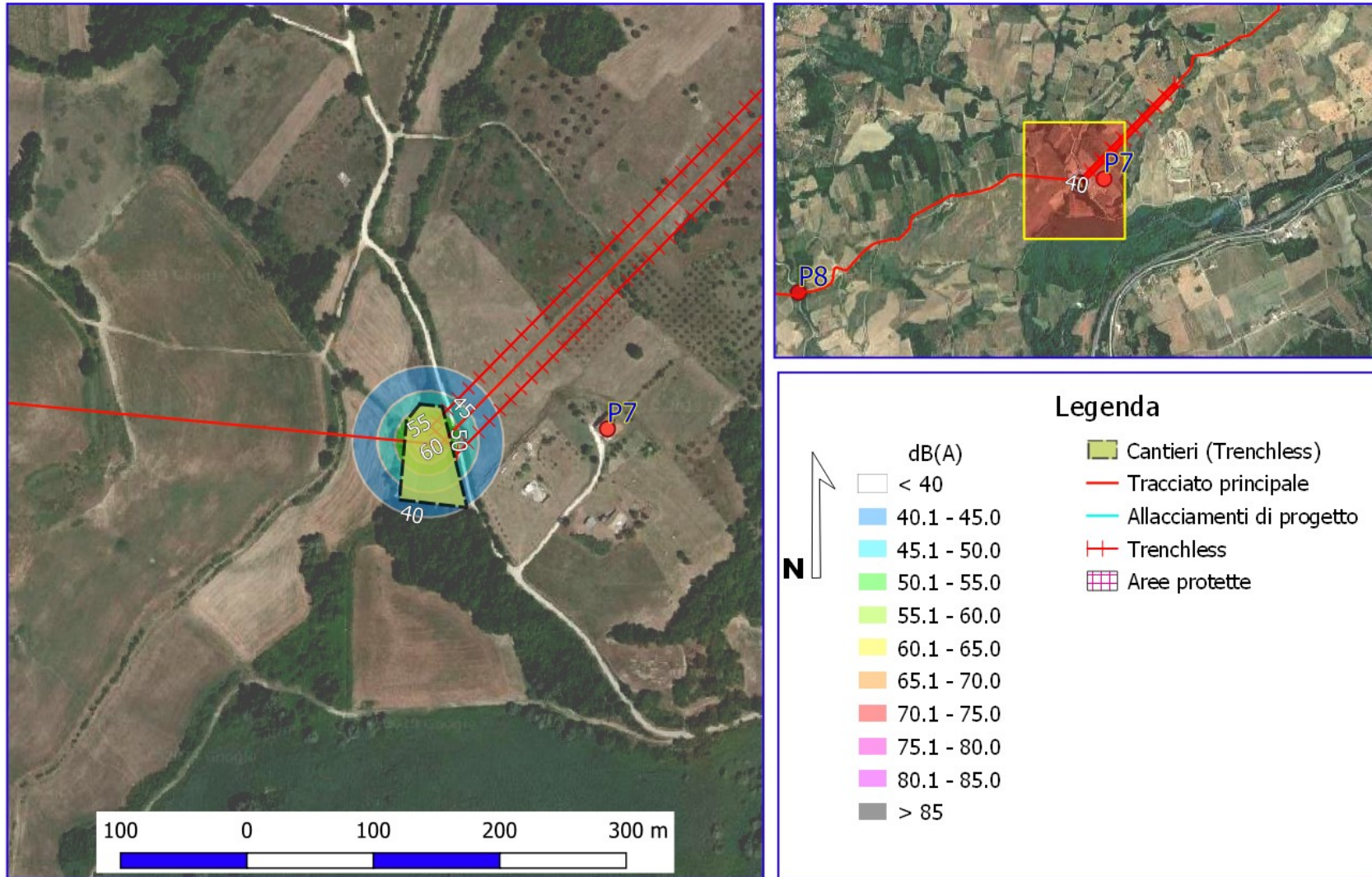
**Rifacimento Metanodotto Chieti - Rieti DN 400 (16"), DP 24 bar**  
**MAPPE ISOFONICHE EMISSIONE ACUSTICA RECETTORE P6 PERIODO DIURNO**



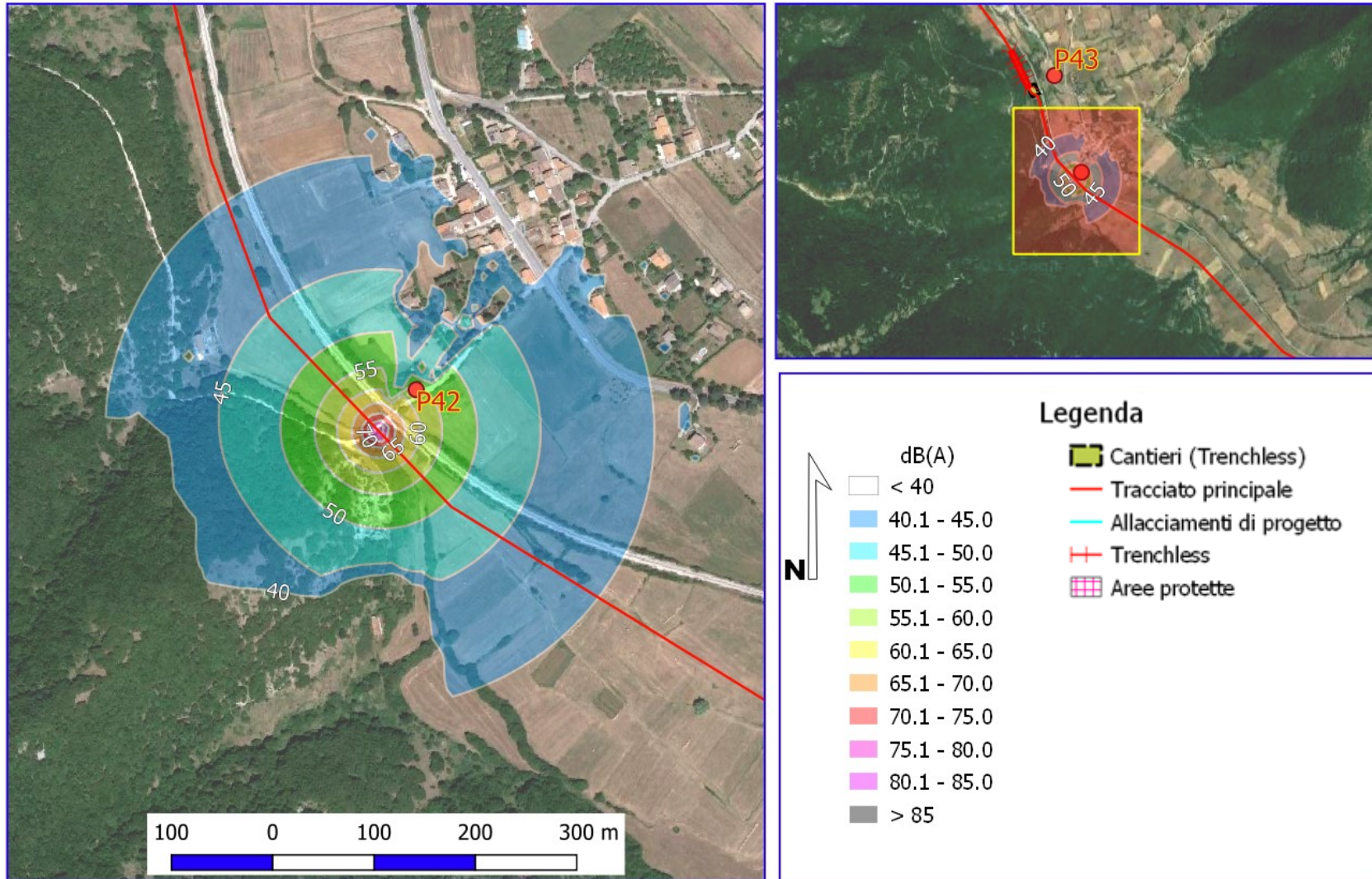
**Rifacimento Metanodotto Chieti - Rieti DN 400 (16"), DP 24 bar**  
**MAPPE ISOFONICHE EMISSIONE ACUSTICA RECETTORE P7 (MICROTUNNEL) PERIODO DIURNO**



**Rifacimento Metanodotto Chieti - Rieti DN 400 (16"), DP 24 bar**  
**MAPPE ISOFONICHE EMISSIONE ACUSTICA RECETTORE P7 (MICROTUNNEL) PERIODO NOTTURNO**



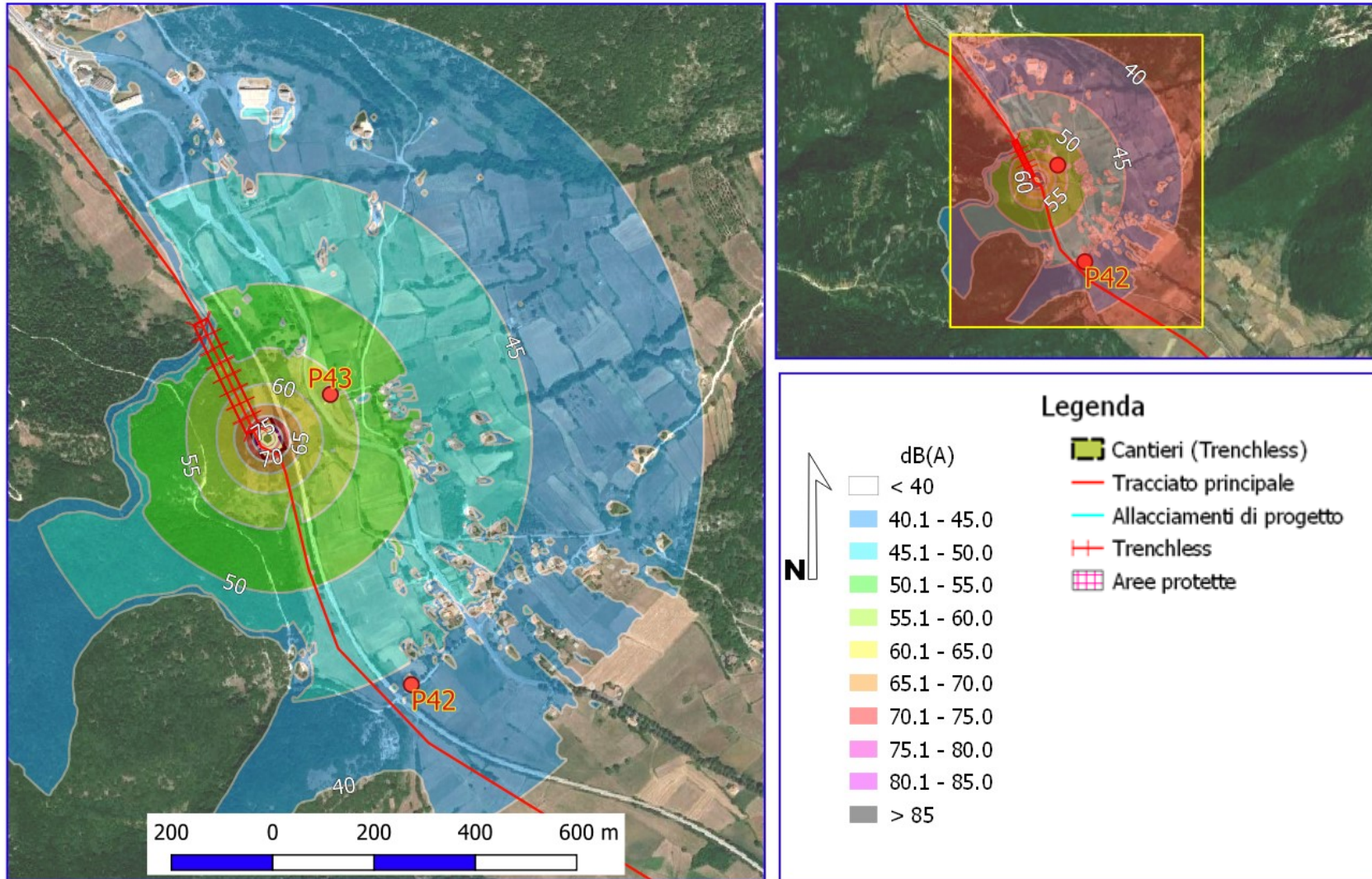
**Rifacimento Metanodotto Chieti - Rieti DN 400 (16"), DP 24 bar**  
**MAPPE ISOFONICHE EMISSIONE ACUSTICA RECETTORE P42 PERIODO DIURNO**





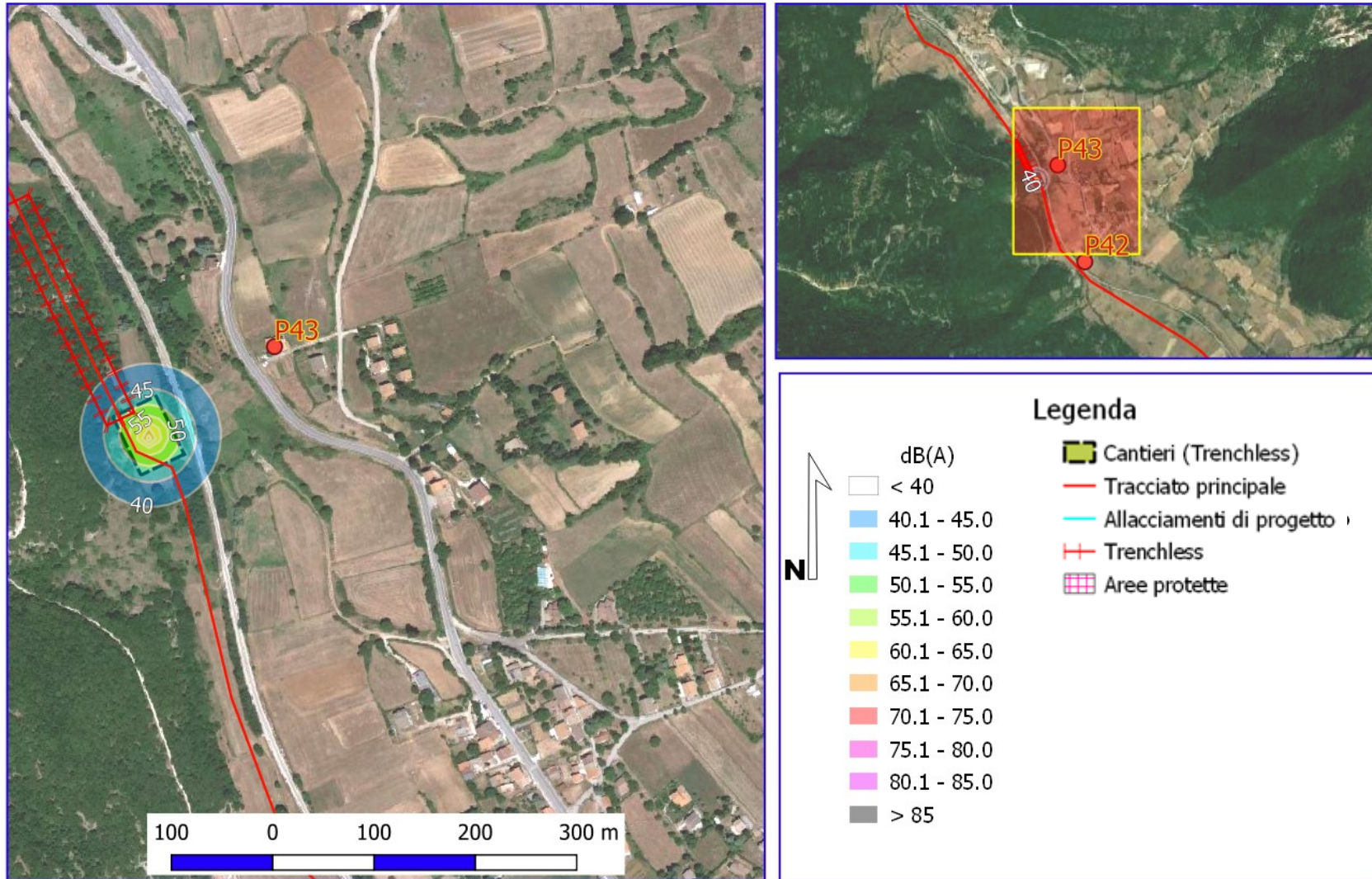
## Rifacimento Metanodotto Chieti - Rieti DN 400 (16"), DP 24 bar

### MAPPE ISOFONICHE EMISSIONE ACUSTICA RECETTORE P43 (MICROTUNNEL) PERIODO DIURNO

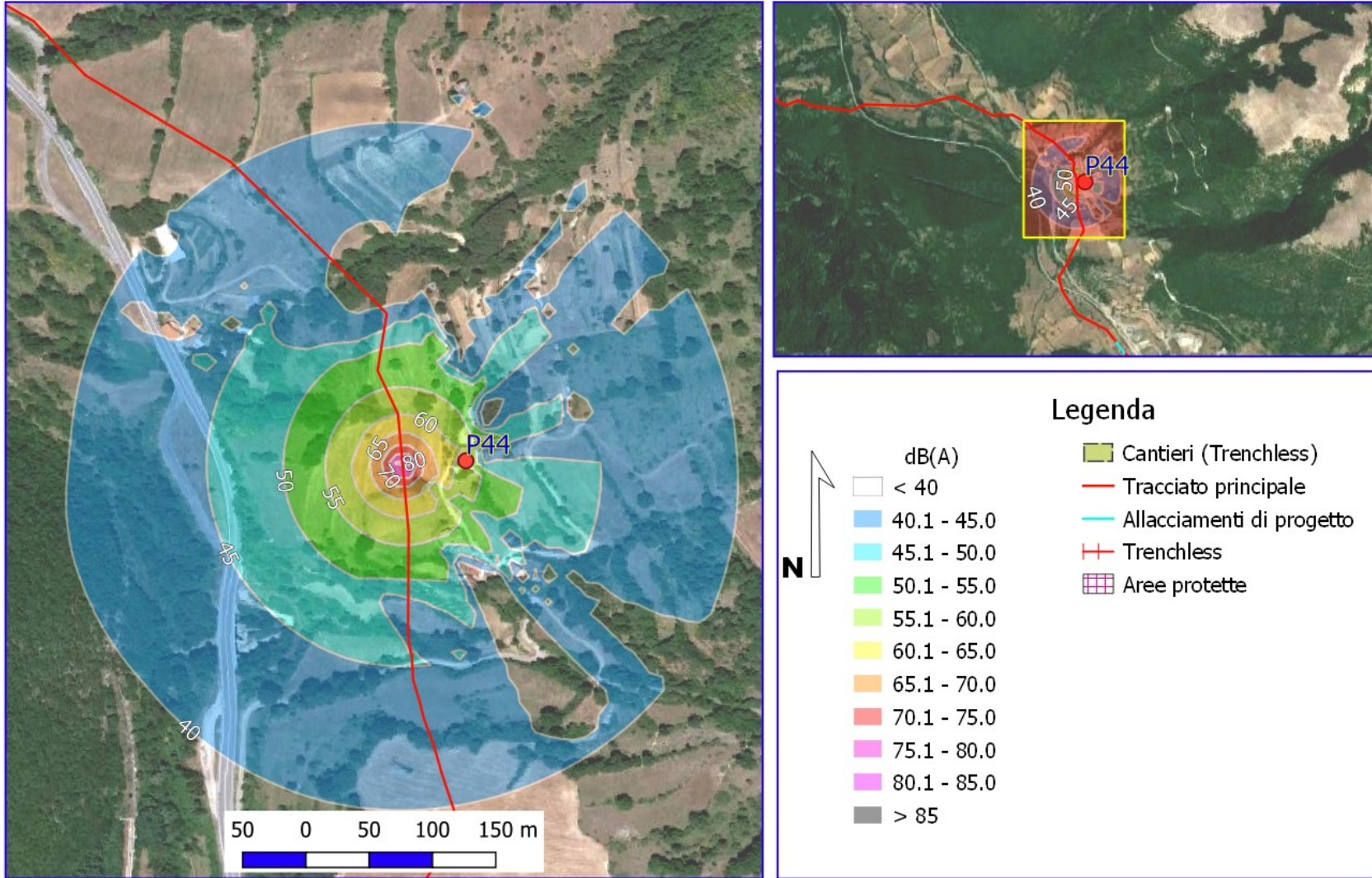


## Rifacimento Metanodotto Chieti - Rieti DN 400 (16"), DP 24 bar

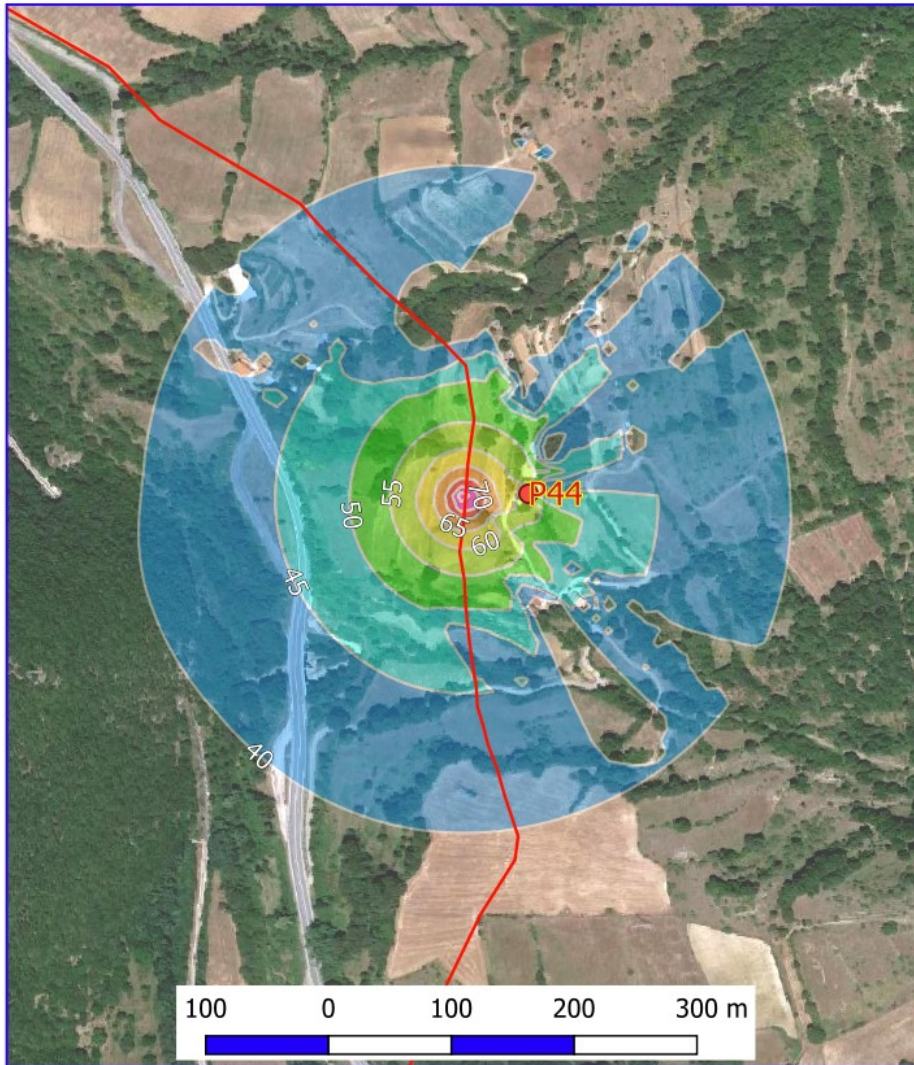
### MAPPE ISOFONICHE EMISSIONE ACUSTICA RECETTORE P43 (MICROTUNNEL) PERIODO NOTTURNO



**Rifacimento Metanodotto Chieti - Rieti DN 400 (16"), DP 24 bar**  
**MAPPE ISOFONICHE EMISSIONE ACUSTICA RECETTORE P44 PERIODO DIURNO**



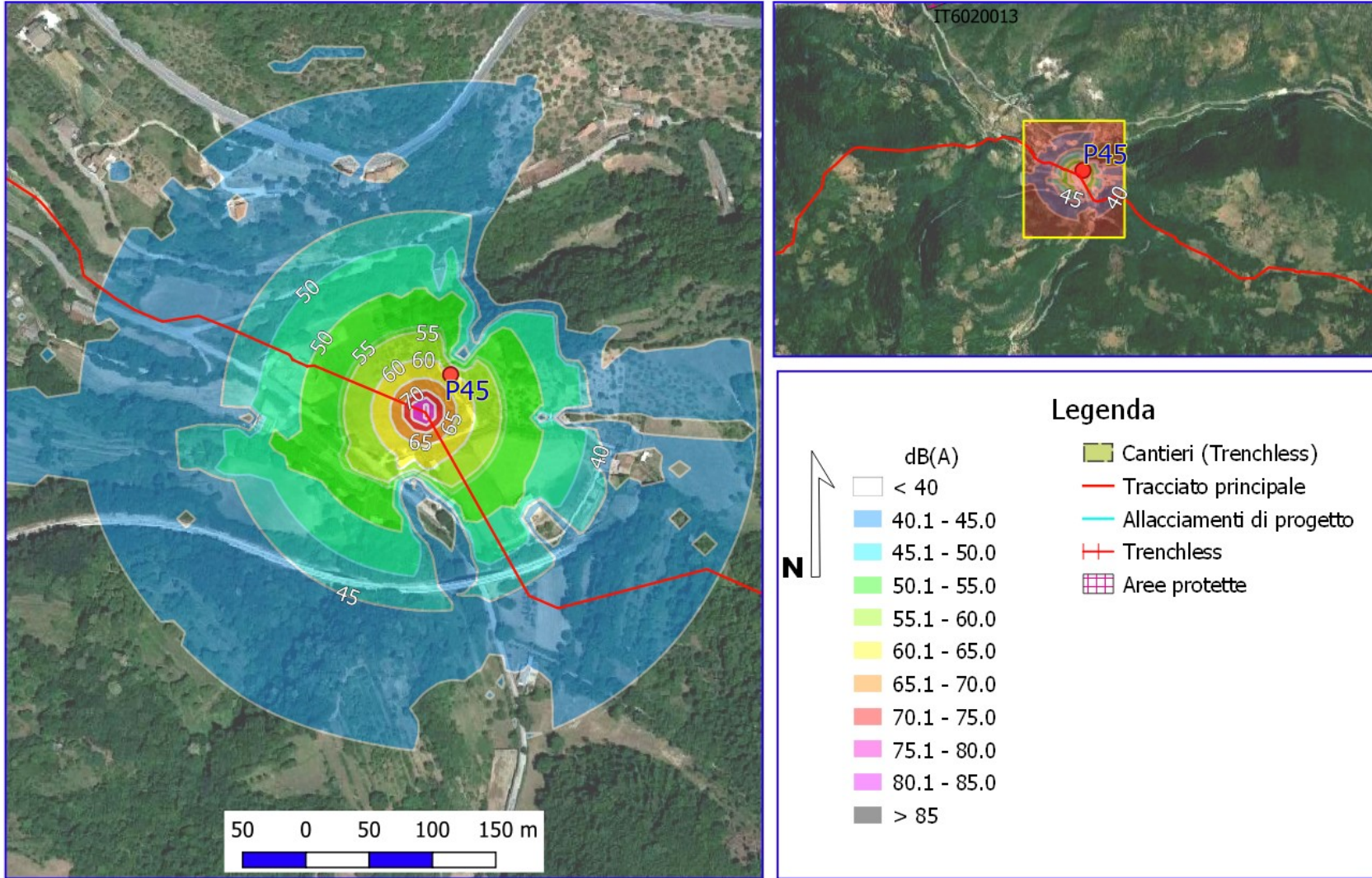
**Rifacimento parziale Metanodotto Chieti - Rieti DN 400 (16"), DP 24 bar e OPERE CONNESSE  
 MAPPE ISOFONICHE EMISSIONE ACUSTICA RECETTORE P44 PERIODO DIURNO**



**Leggenda**

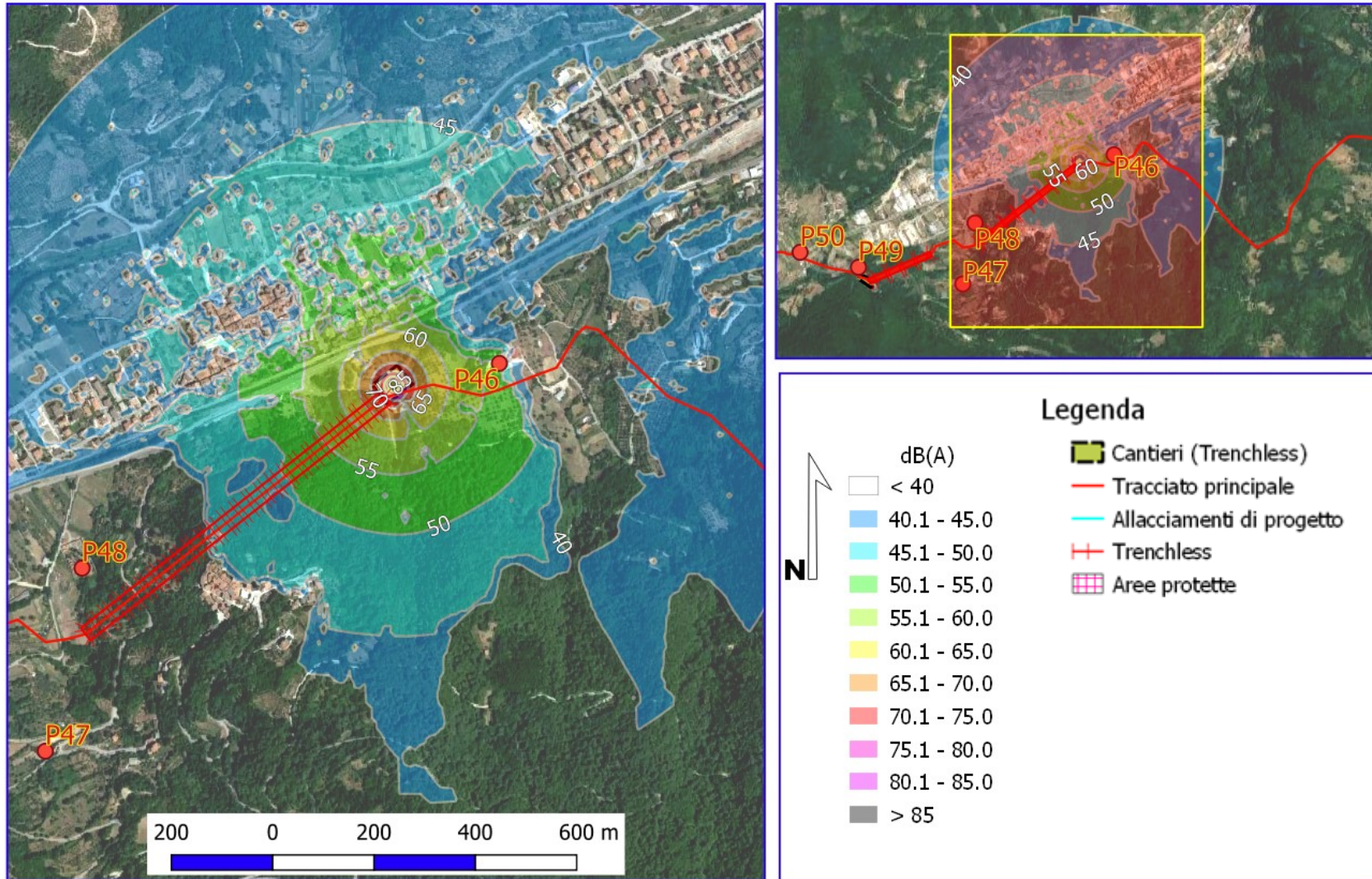
<p><b>dB(A)</b></p> <ul style="list-style-type: none"> <li><span style="display: inline-block; width: 15px; height: 15px; border: 1px solid black; background-color: white; margin-right: 5px;"></span> &lt; 40</li> <li><span style="display: inline-block; width: 15px; height: 15px; background-color: lightblue; margin-right: 5px;"></span> 40.1 - 45.0</li> <li><span style="display: inline-block; width: 15px; height: 15px; background-color: cyan; margin-right: 5px;"></span> 45.1 - 50.0</li> <li><span style="display: inline-block; width: 15px; height: 15px; background-color: lightgreen; margin-right: 5px;"></span> 50.1 - 55.0</li> <li><span style="display: inline-block; width: 15px; height: 15px; background-color: limegreen; margin-right: 5px;"></span> 55.1 - 60.0</li> <li><span style="display: inline-block; width: 15px; height: 15px; background-color: yellow; margin-right: 5px;"></span> 60.1 - 65.0</li> <li><span style="display: inline-block; width: 15px; height: 15px; background-color: orange; margin-right: 5px;"></span> 65.1 - 70.0</li> <li><span style="display: inline-block; width: 15px; height: 15px; background-color: red; margin-right: 5px;"></span> 70.1 - 75.0</li> <li><span style="display: inline-block; width: 15px; height: 15px; background-color: magenta; margin-right: 5px;"></span> 75.1 - 80.0</li> <li><span style="display: inline-block; width: 15px; height: 15px; background-color: purple; margin-right: 5px;"></span> 80.1 - 85.0</li> <li><span style="display: inline-block; width: 15px; height: 15px; background-color: gray; margin-right: 5px;"></span> &gt; 85</li> </ul>	<ul style="list-style-type: none"> <li><span style="display: inline-block; width: 15px; height: 15px; background-color: green; border: 1px solid black; margin-right: 5px;"></span> Cantieri (Trenchless)</li> <li><span style="display: inline-block; width: 15px; border-bottom: 2px solid red; margin-right: 5px;"></span> Tracciato principale</li> <li><span style="display: inline-block; width: 15px; border-bottom: 2px solid cyan; margin-right: 5px;"></span> Allacciamenti di progetto</li> <li><span style="display: inline-block; width: 15px; height: 15px; border: 1px solid red; margin-right: 5px;"></span> Trenchless</li> </ul> <p><b>Aree protette</b></p> <ul style="list-style-type: none"> <li><span style="display: inline-block; width: 15px; height: 15px; border: 1px solid black; background: repeating-linear-gradient(45deg, transparent, transparent 2px, gray 2px, gray 4px); margin-right: 5px;"></span> ZPS IT7110128</li> <li><span style="display: inline-block; width: 15px; height: 15px; border: 1px solid black; background: repeating-linear-gradient(-45deg, transparent, transparent 2px, gray 2px, gray 4px); margin-right: 5px;"></span> SIC_Abruzzo</li> <li><span style="display: inline-block; width: 15px; height: 15px; border: 1px solid black; background: repeating-linear-gradient(-45deg, transparent, transparent 2px, gray 2px, gray 4px); margin-right: 5px;"></span> sit_28501_ZSC_LAZIO</li> </ul>
--	--

**Rifacimento Metanodotto Chieti - Rieti DN 400 (16"), DP 24 bar**  
**MAPPE ISOFONICHE EMISSIONE ACUSTICA RECETTORE P45 PERIODO DIURNO**



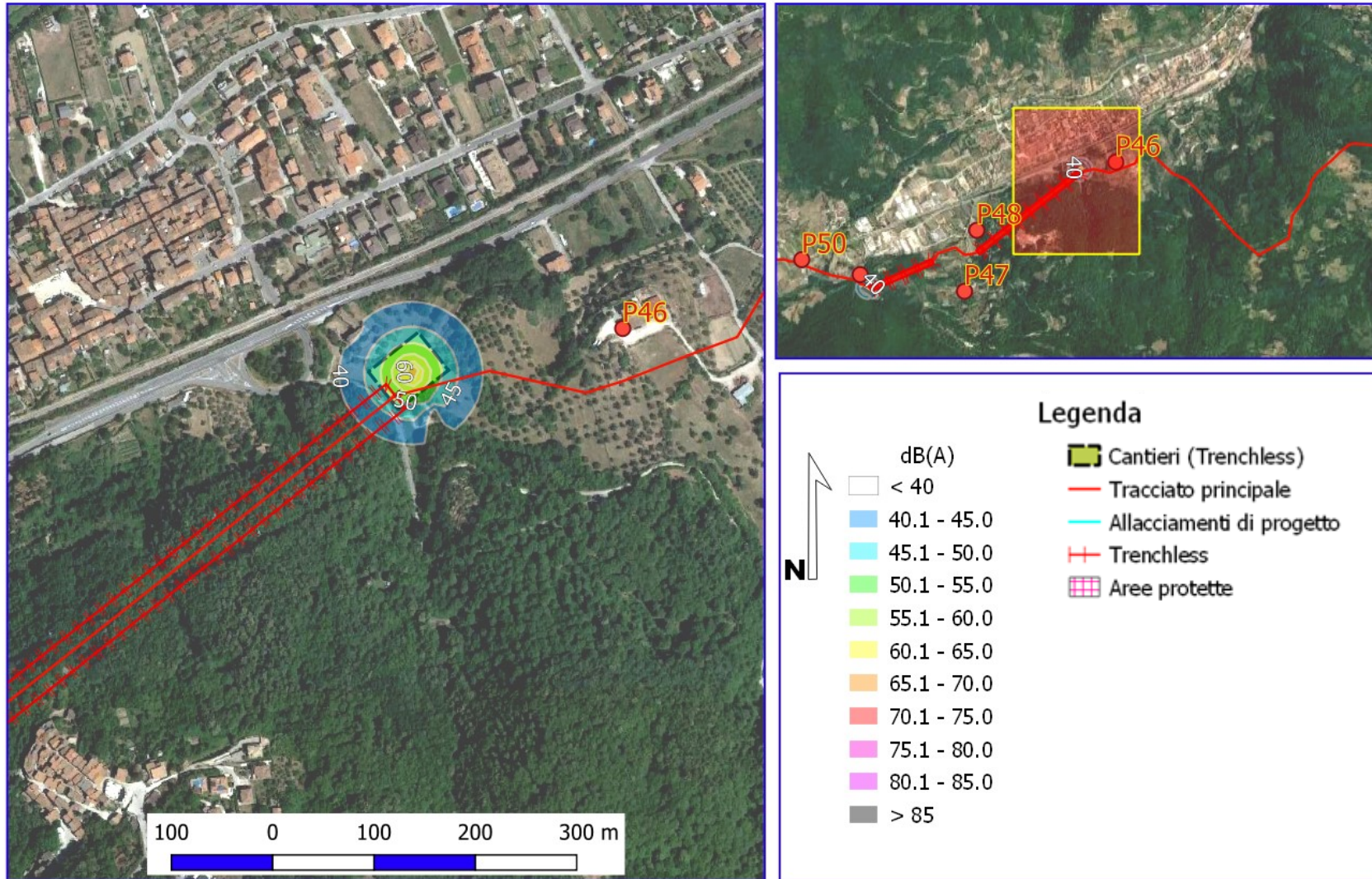
## Rifacimento Metanodotto Chieti - Rieti DN 400 (16"), DP 24 bar

### MAPPE ISOFONICHE EMISSIONE ACUSTICA RECETTORE P46 (MICROTUNNEL) PERIODO DIURNO

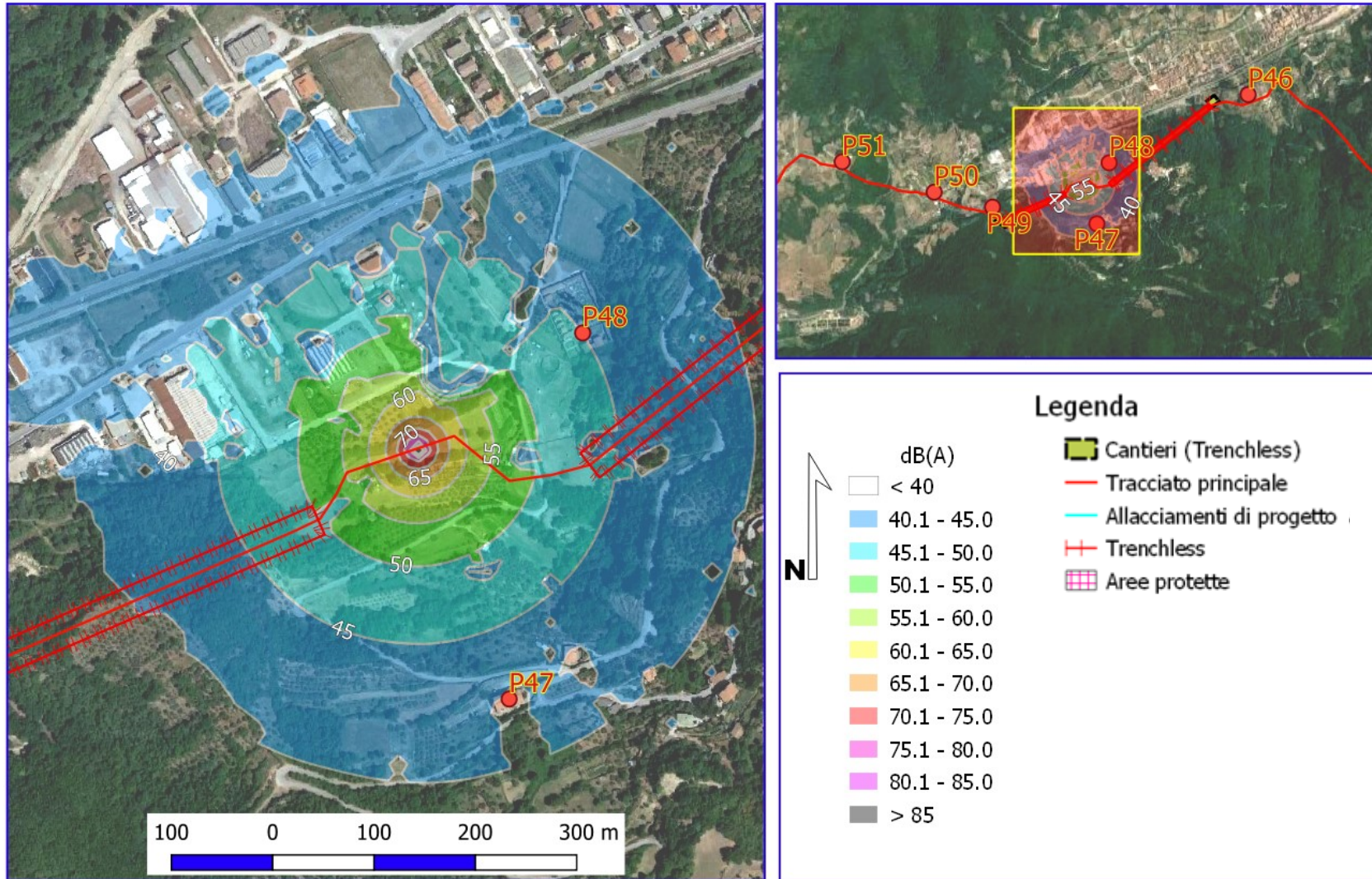


## Rifacimento Metanodotto Chieti - Rieti DN 400 (16"), DP 24 bar

### MAPPE ISOFONICHE EMISSIONE ACUSTICA RECETTORE P46



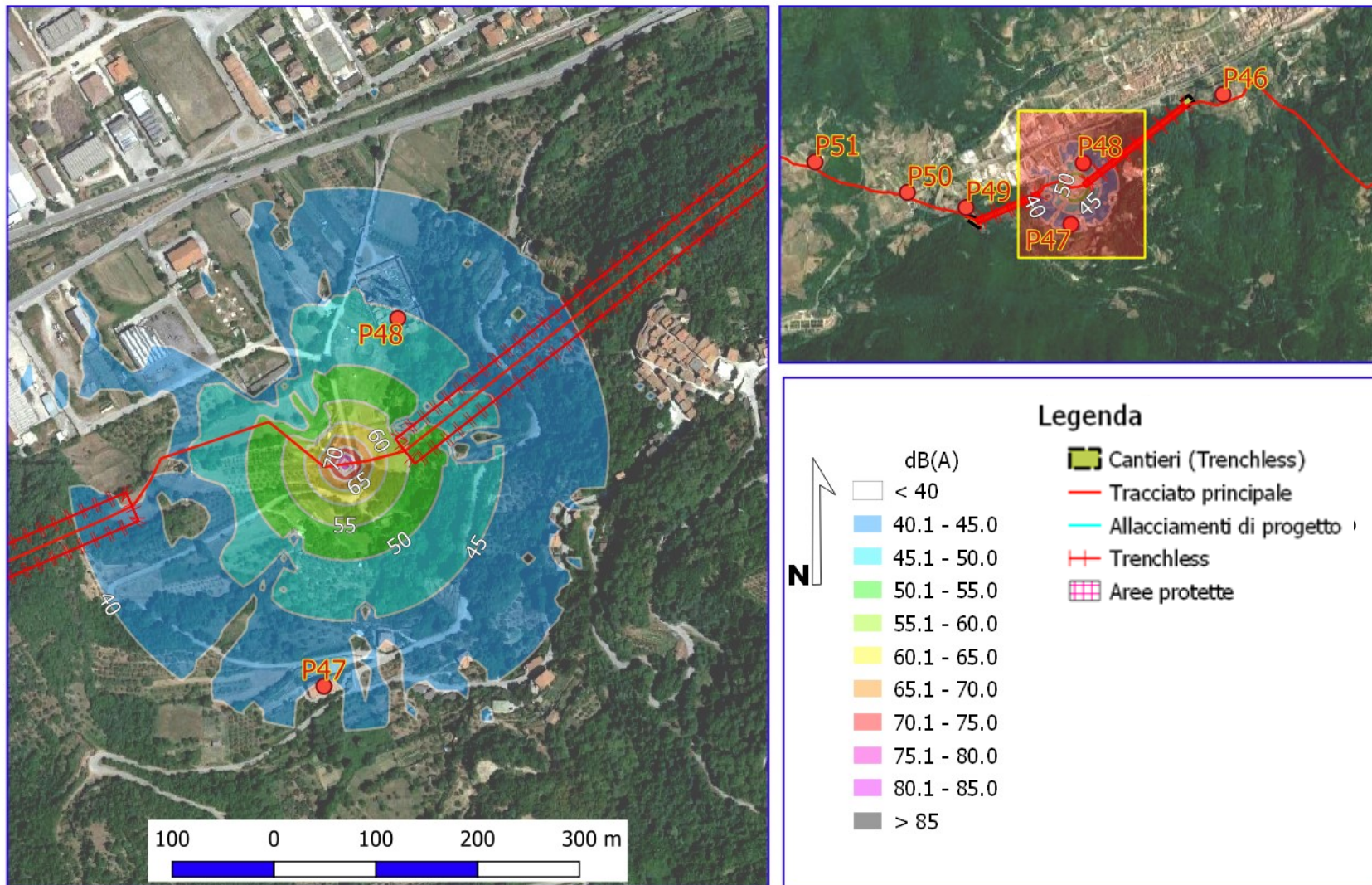
**Rifacimento Metanodotto Chieti - Rieti DN 400 (16"), DP 24 bar**  
**MAPPE ISOFONICHE EMISSIONE ACUSTICA RECETTORE P47 PERIODO DIURNO**





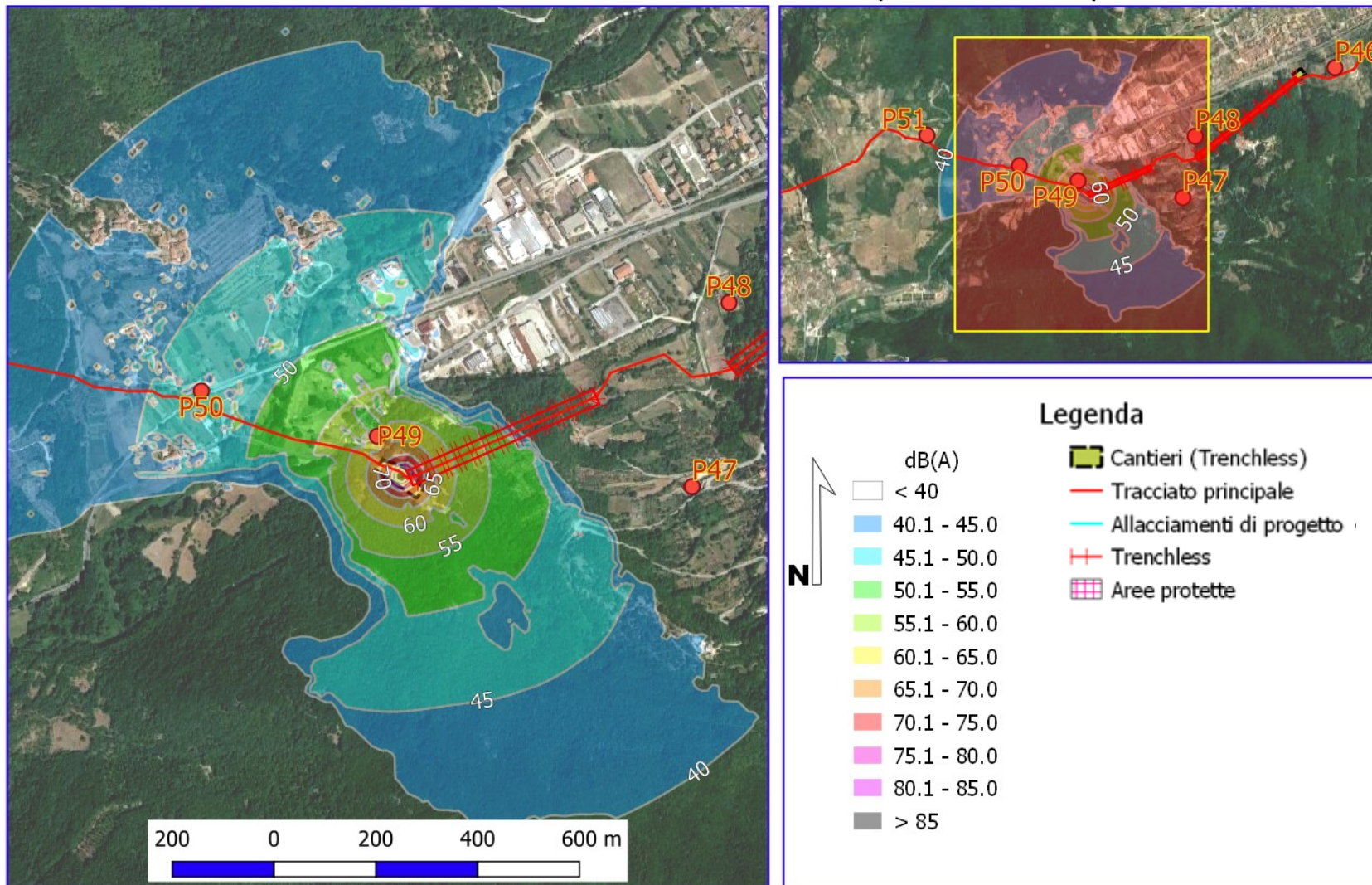
## Rifacimento Metanodotto Chieti - Rieti DN 400 (16"), DP 24 bar

### MAPPE ISOFONICHE EMISSIONE ACUSTICA RECETTORE P48 PERIODO DIURNO



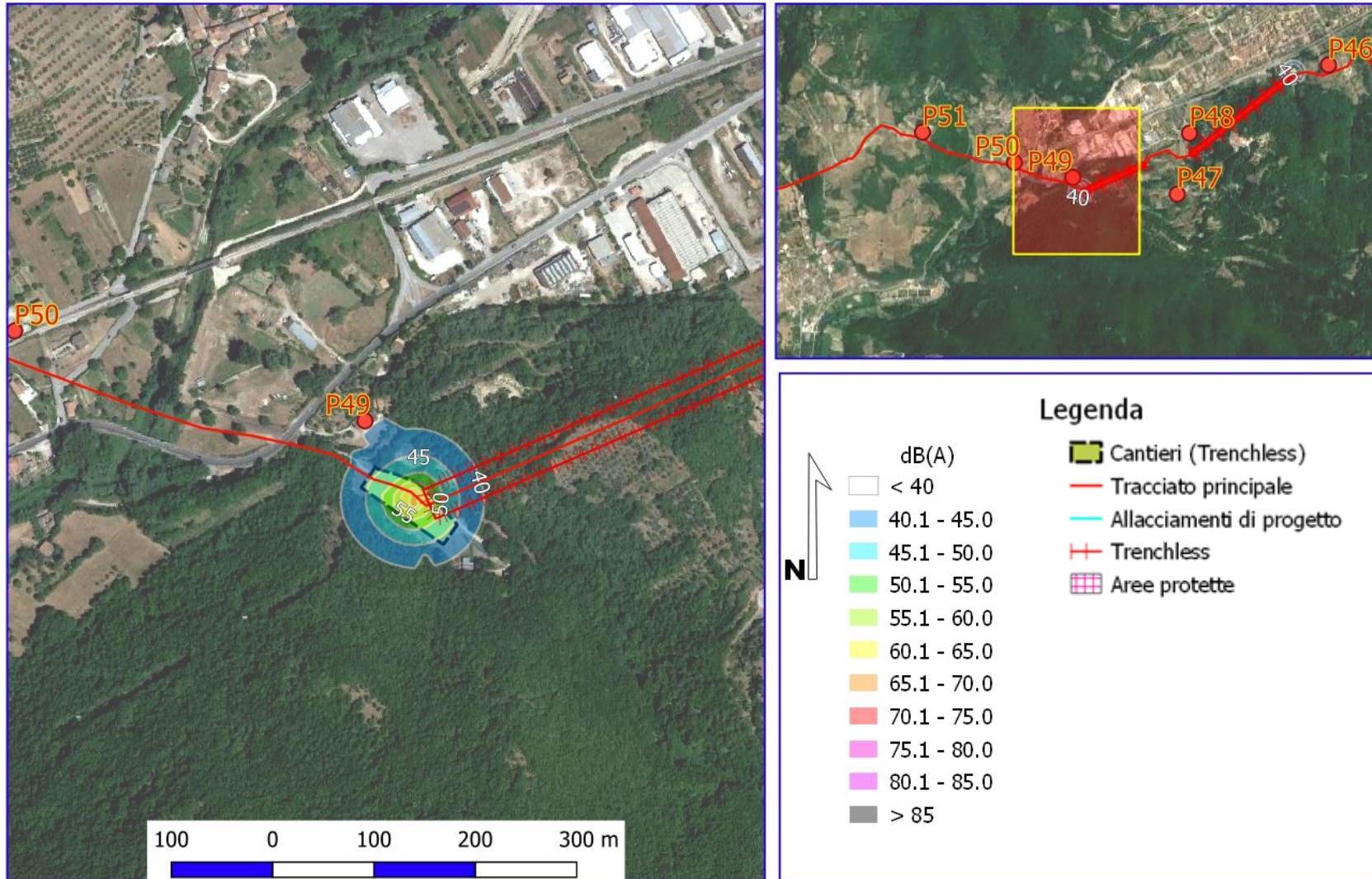
## Rifacimento Metanodotto Chieti - Rieti DN 400 (16"), DP 24 bar

### MAPPE ISOFONICHE EMISSIONE ACUSTICA RECETTORE P49 (MICROTUNNEL) PERIODO DIURNO

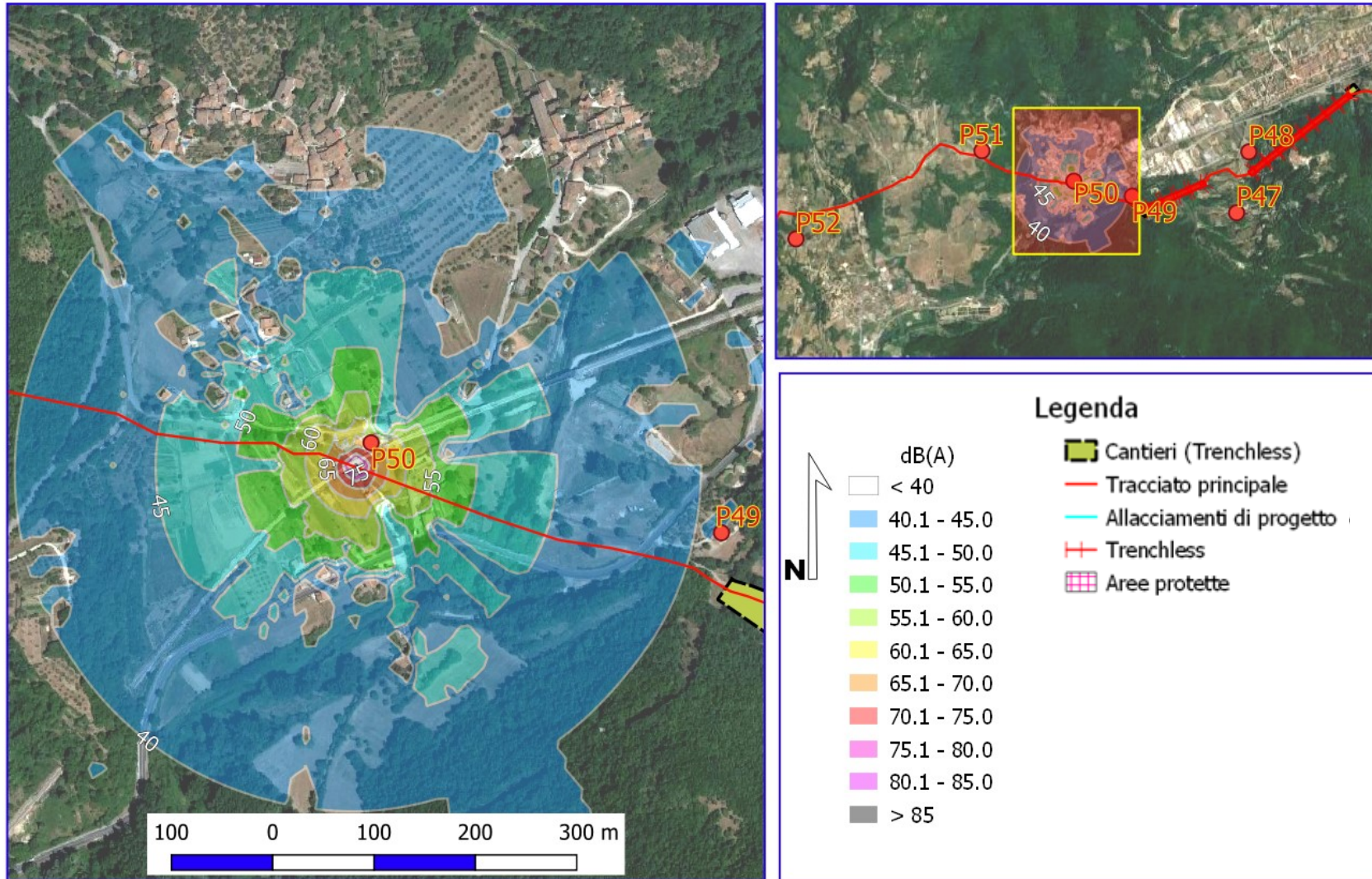


## Rifacimento Metanodotto Chieti - Rieti DN 400 (16"), DP 24 bar

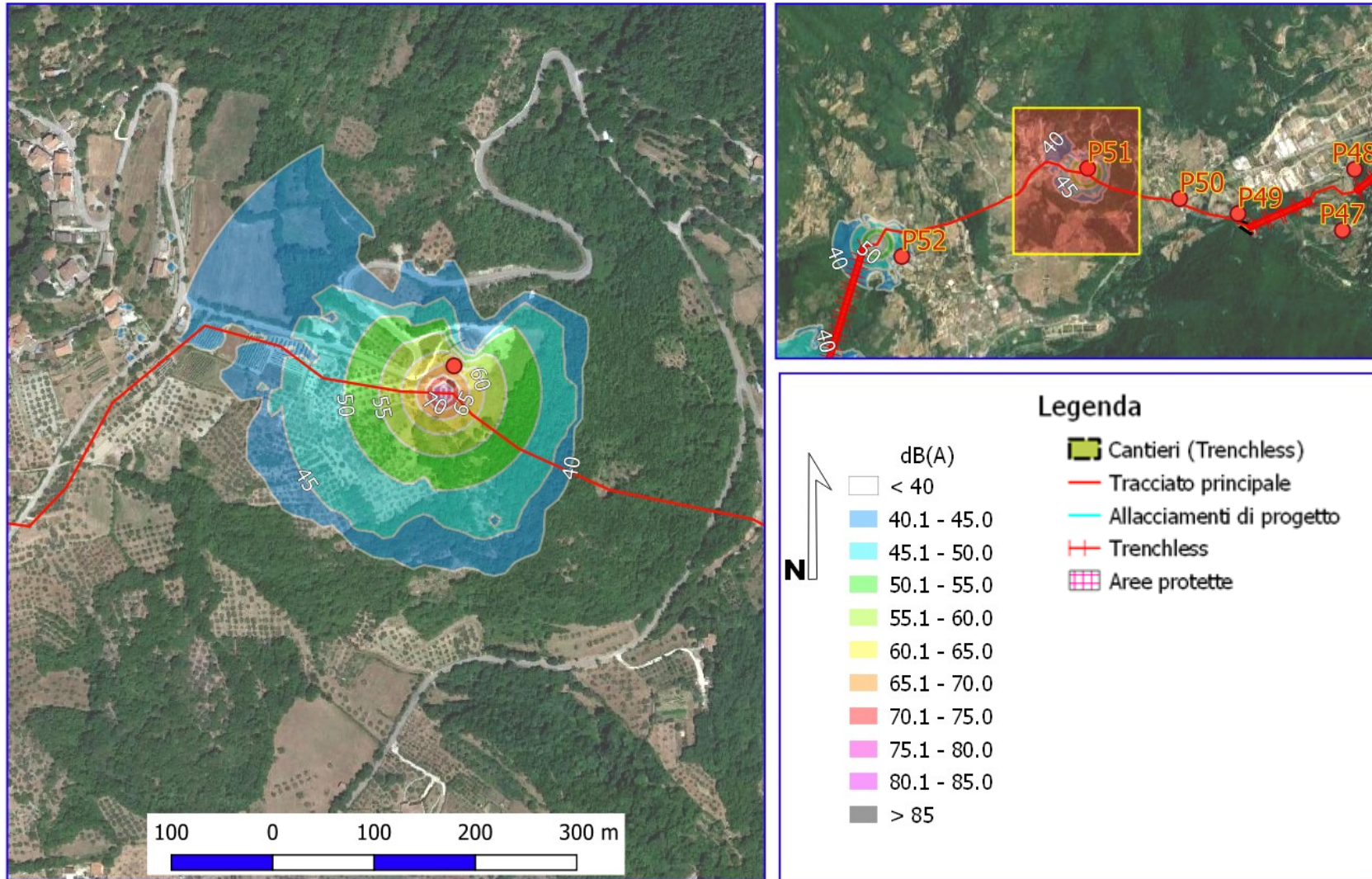
### MAPPE ISOFONICHE EMISSIONE ACUSTICA RECETTORE P49 (MICROTUNNEL) PERIODO NOTTURNO



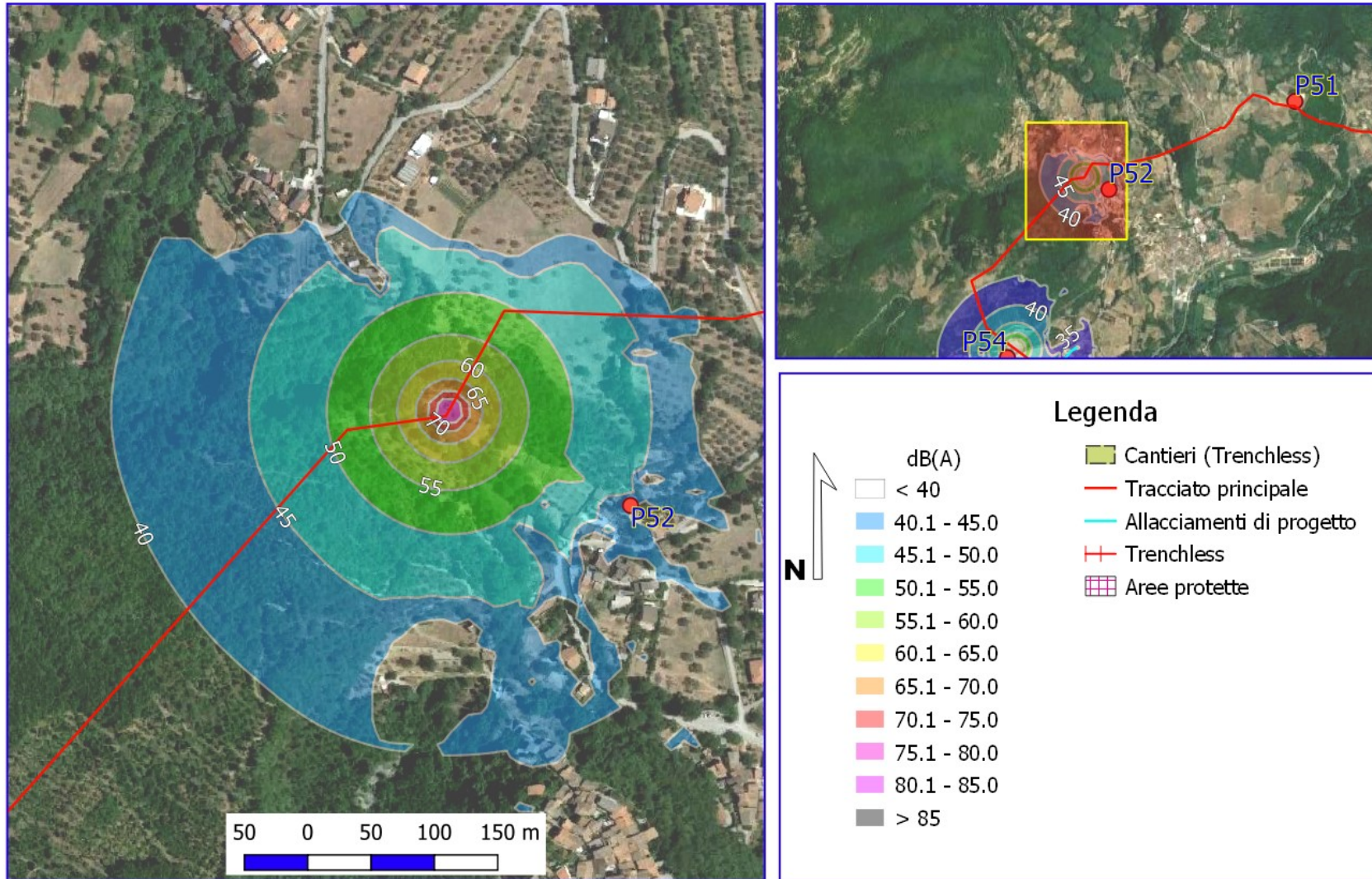
**Rifacimento Metanodotto Chieti - Rieti DN 400 (16"), DP 24 bar**  
**MAPPE ISOFONICHE EMISSIONE ACUSTICA RECETTORE P50 PERIODO DIURNO**



**Rifacimento Metanodotto Chieti - Rieti DN 400 (16"), DP 24 bar**  
**MAPPE ISOFONICHE EMISSIONE ACUSTICA RECETTORE P51 PERIODO DIURNO**

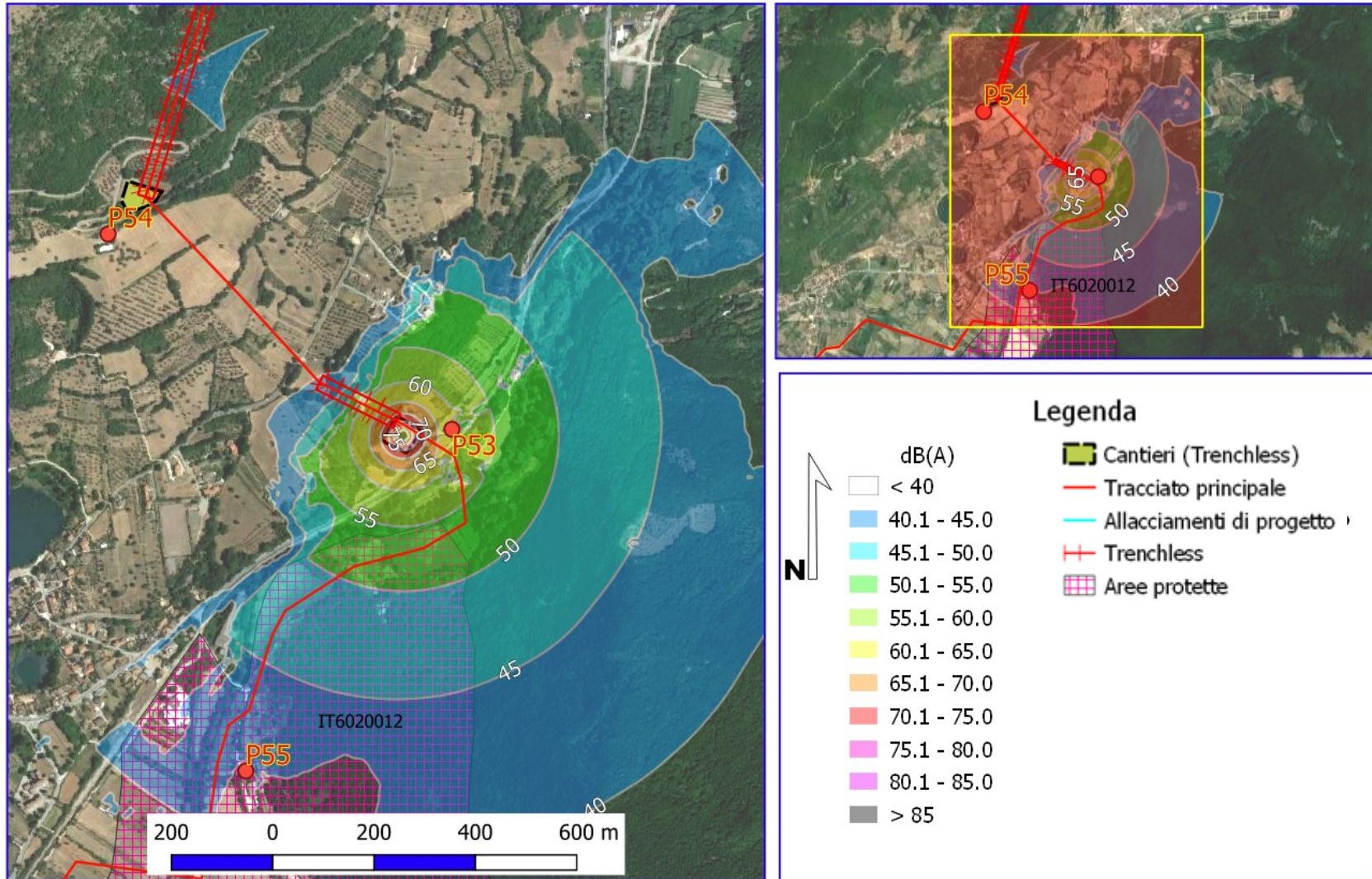


**Rifacimento Metanodotto Chieti - Rieti DN 400 (16"), DP 24 bar**  
**MAPPE ISOFONICHE EMISSIONE ACUSTICA RECETTORE P52 PERIODO DIURNO**



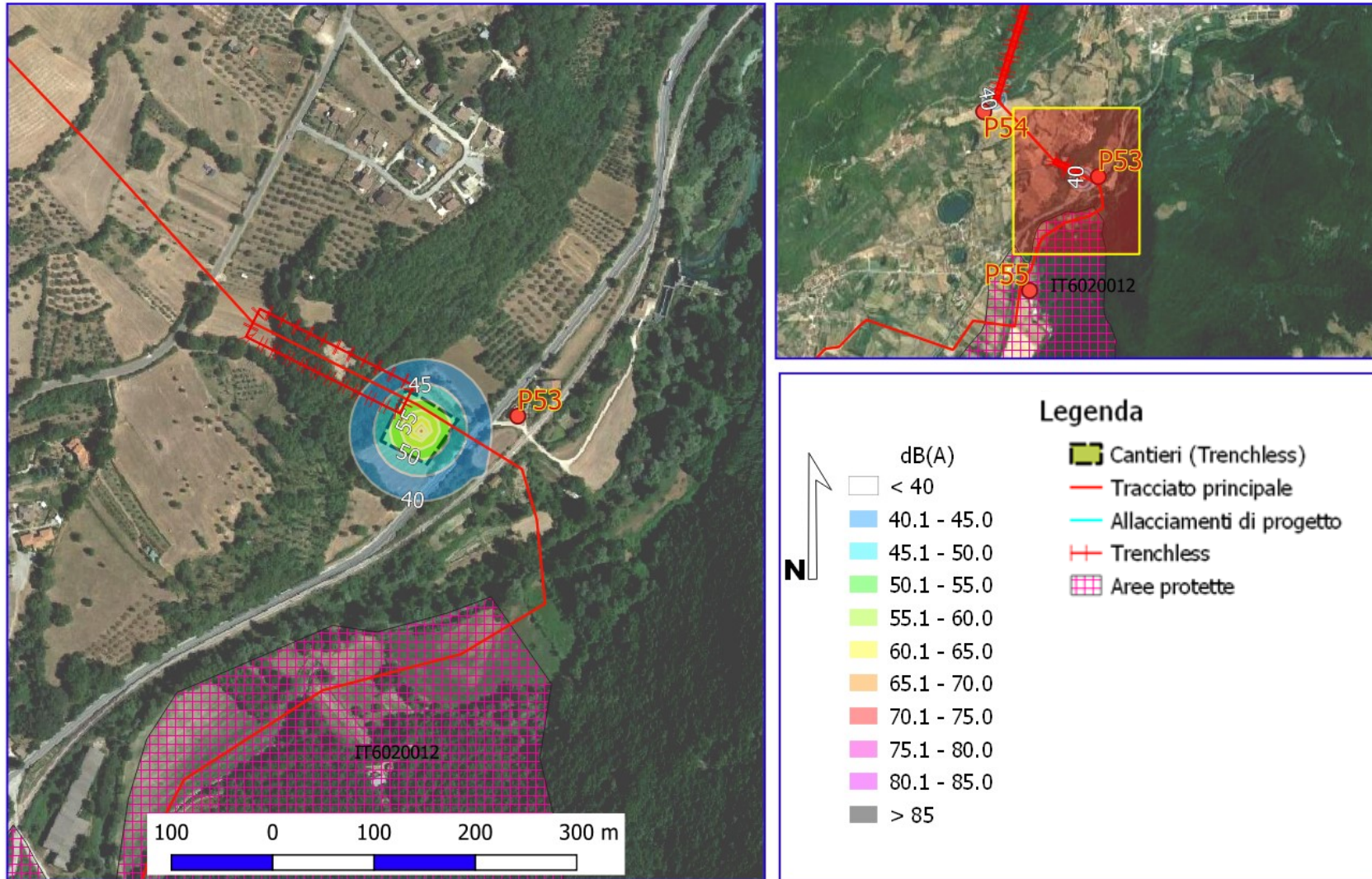
## Rifacimento Metanodotto Chieti - Rieti DN 400 (16"), DP 24 bar

### MAPPE ISOFONICHE EMISSIONE ACUSTICA RECETTORE P53 (MICROTUNNEL) PERIODO DIURNO



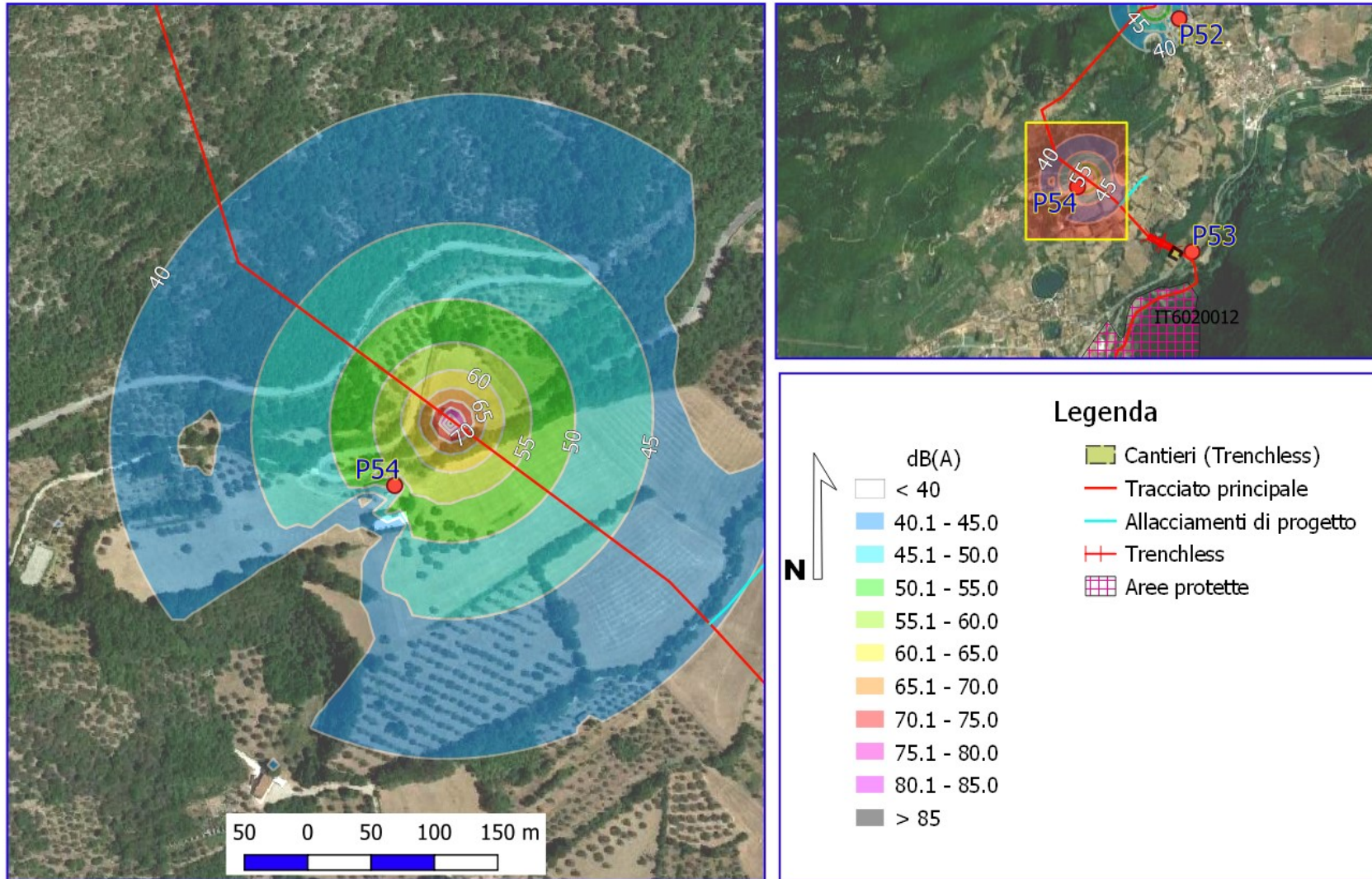
## Rifacimento Metanodotto Chieti - Rieti DN 400 (16"), DP 24 bar

### MAPPE ISOFONICHE EMISSIONE ACUSTICA RECETTORE P53 (MICROTUNNEL) PERIODO NOTTURNO



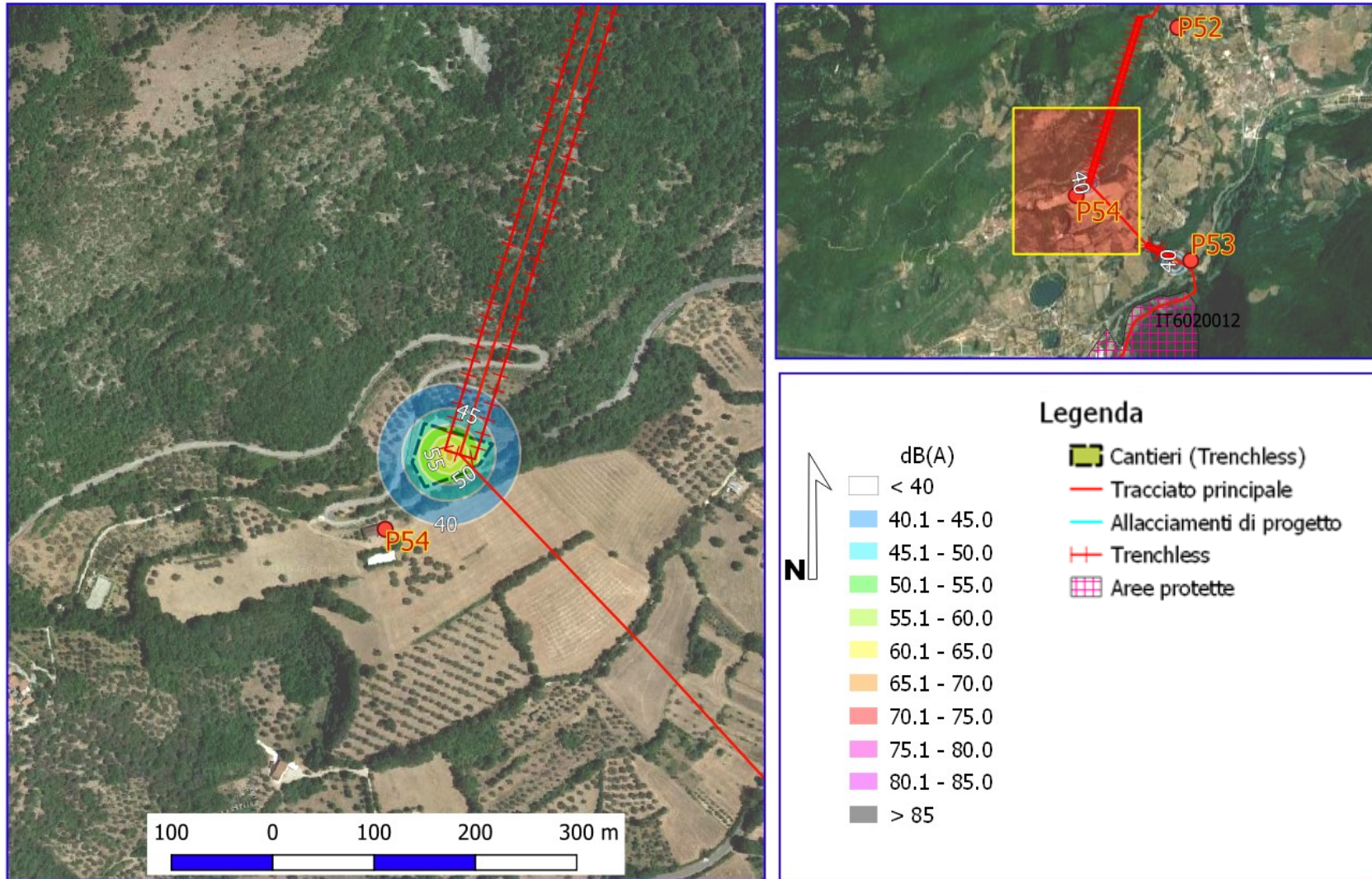


**Rifacimento Metanodotto Chieti - Rieti DN 400 (16"), DP 24 bar**  
**MAPPE ISOFONICHE EMISSIONE ACUSTICA RECETTORE P54 PERIODO DIURNO**

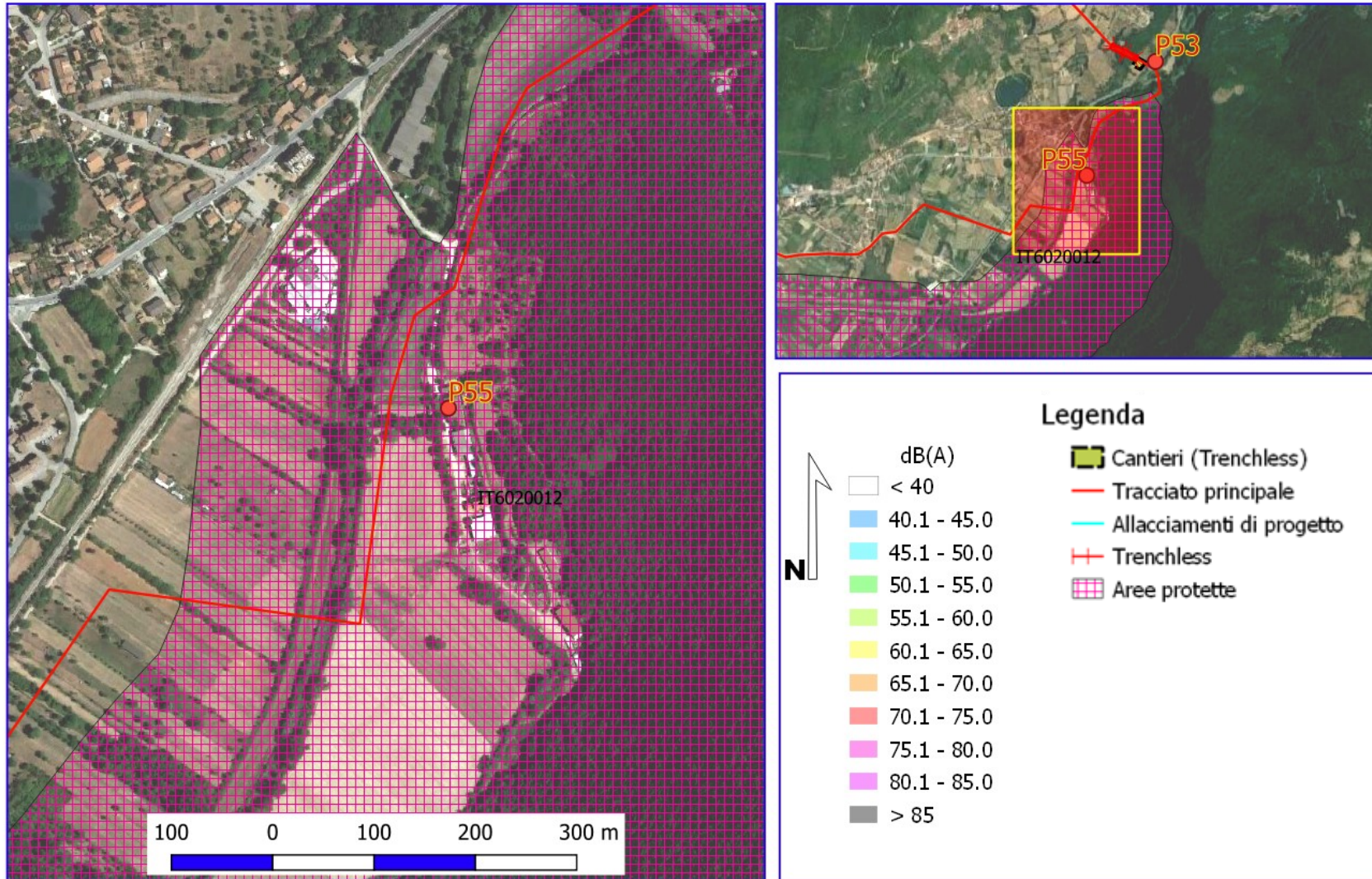


## Rifacimento Metanodotto Chieti - Rieti DN 400 (16"), DP 24 bar

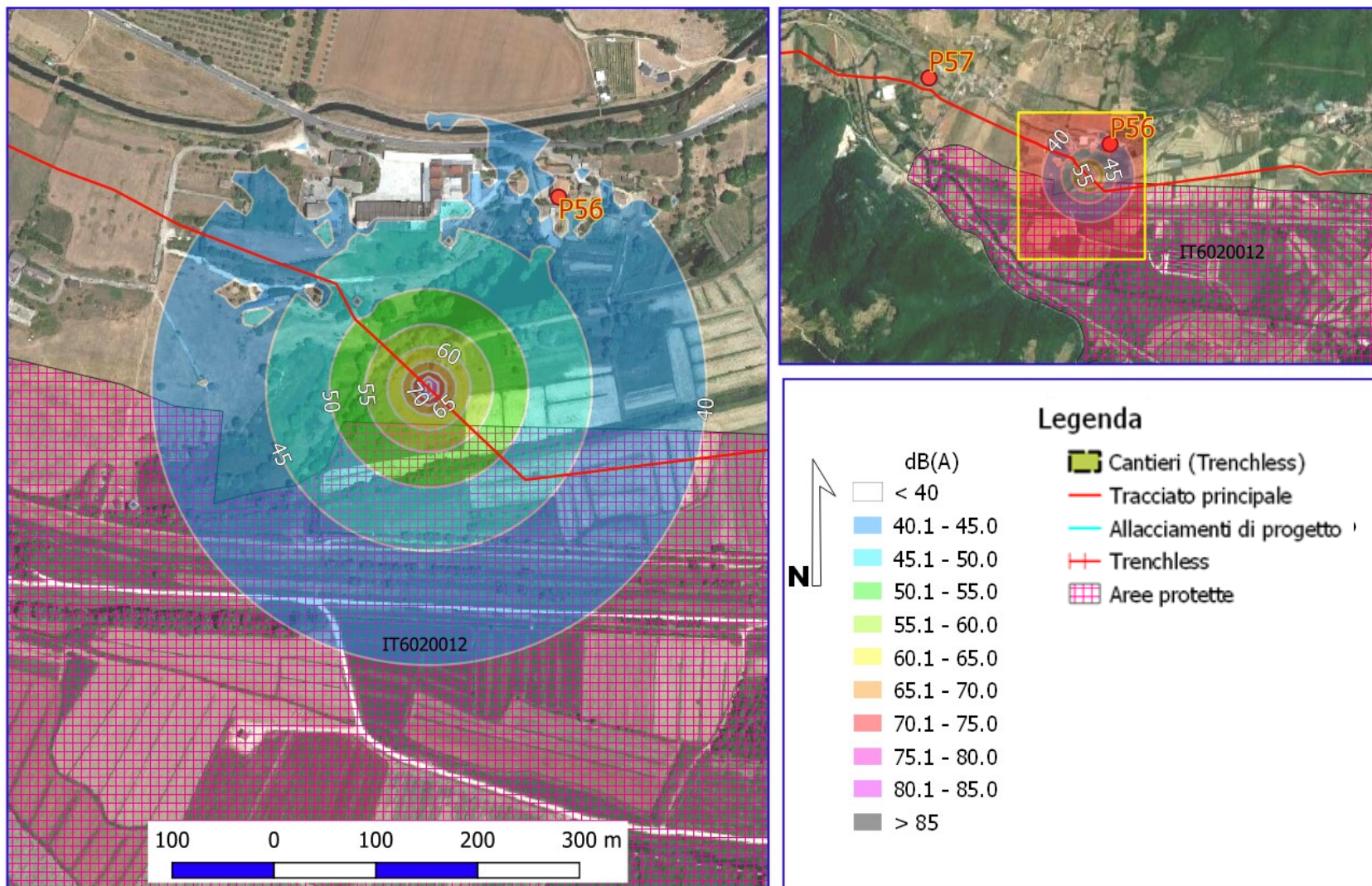
### MAPPE ISOFONICHE EMISSIONE ACUSTICA RECETTORE P54 (MICROTUNNEL) PERIODO NOTTURNO



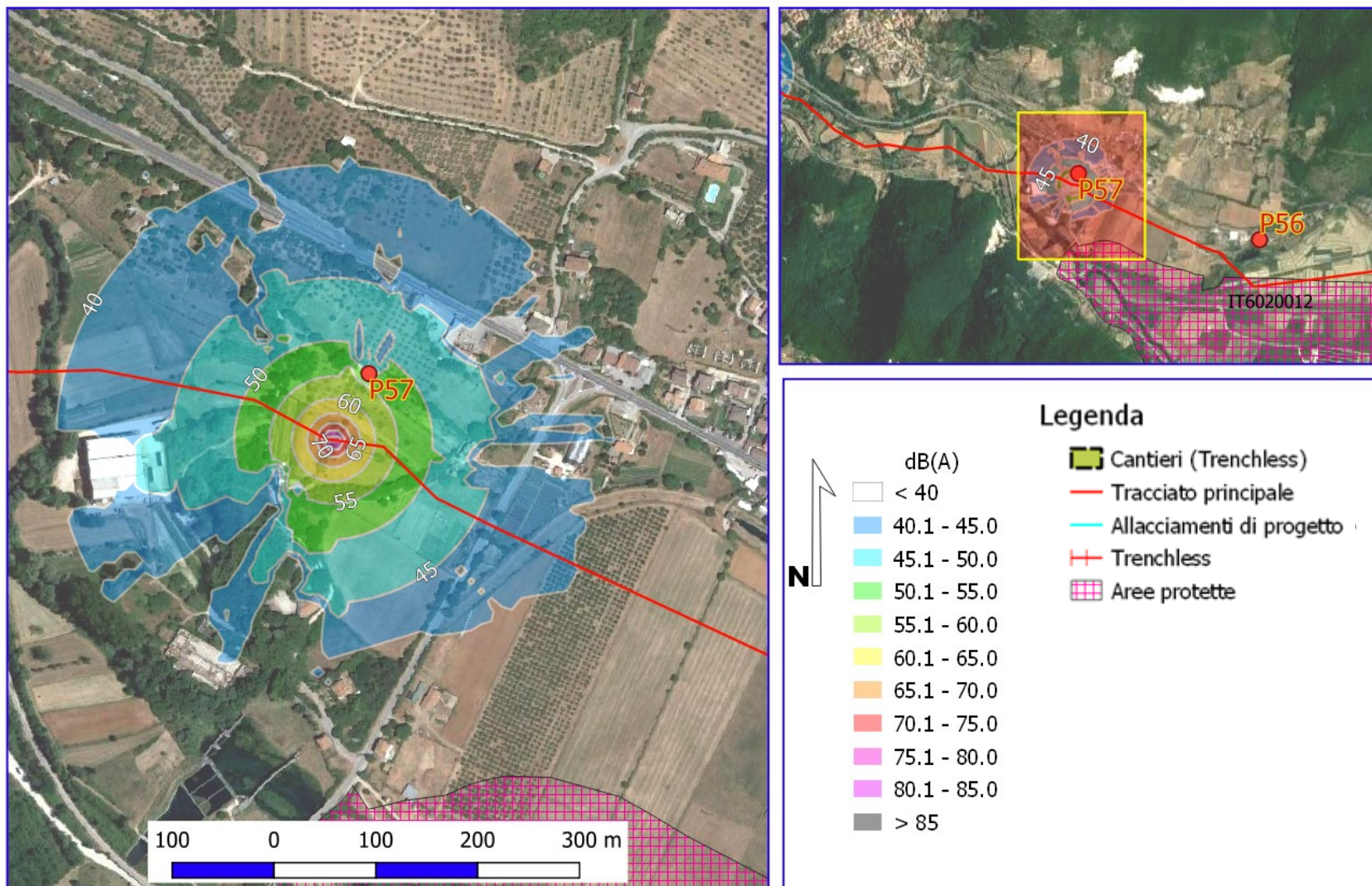
**Rifacimento Metanodotto Chieti - Rieti DN 400 (16"), DP 24 bar**  
**MAPPE ISOFONICHE EMISSIONE ACUSTICA RECETTORE P55 ) PERIODO DIURNO**



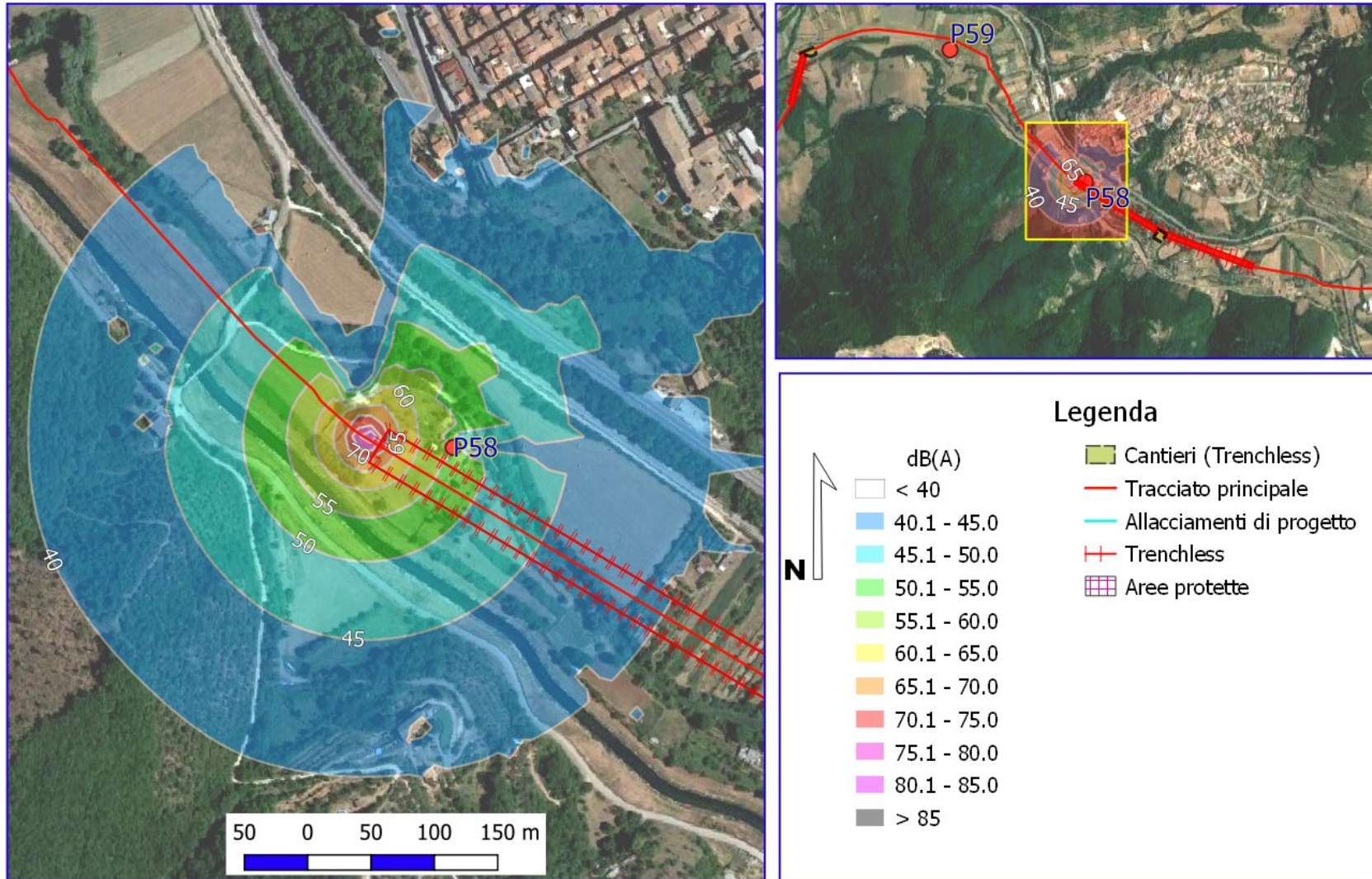
**Rifacimento Metanodotto Chieti - Rieti DN 400 (16"), DP 24 bar**  
**MAPPE ISOFONICHE EMISSIONE ACUSTICA RECETTORE P56 PERIODO DIURNO**



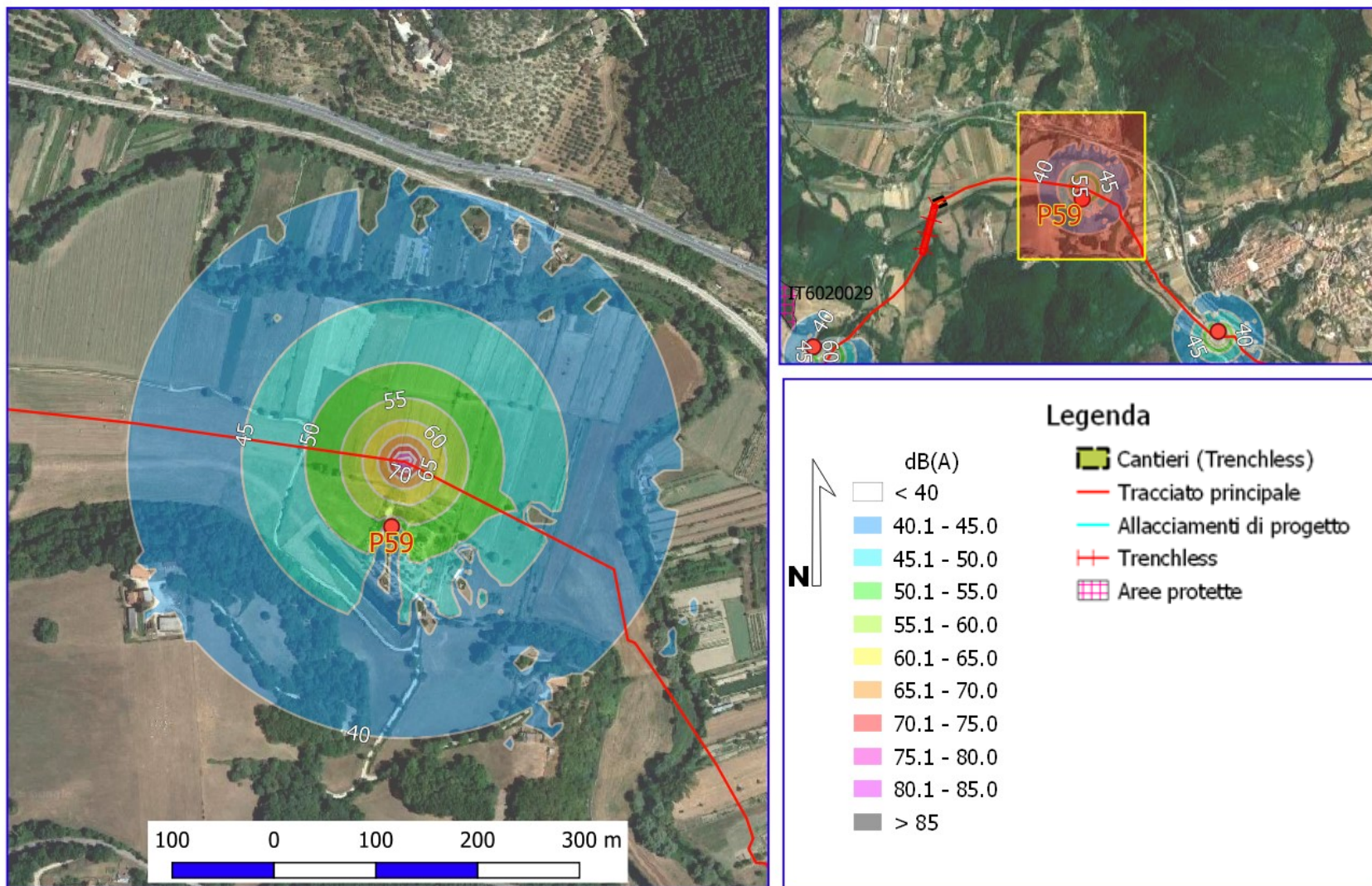
**Rifacimento Metanodotto Chieti - Rieti DN 400 (16"), DP 24 bar**  
**MAPPE ISOFONICHE EMISSIONE ACUSTICA RECETTORE P57 PERIODO DIURNO**



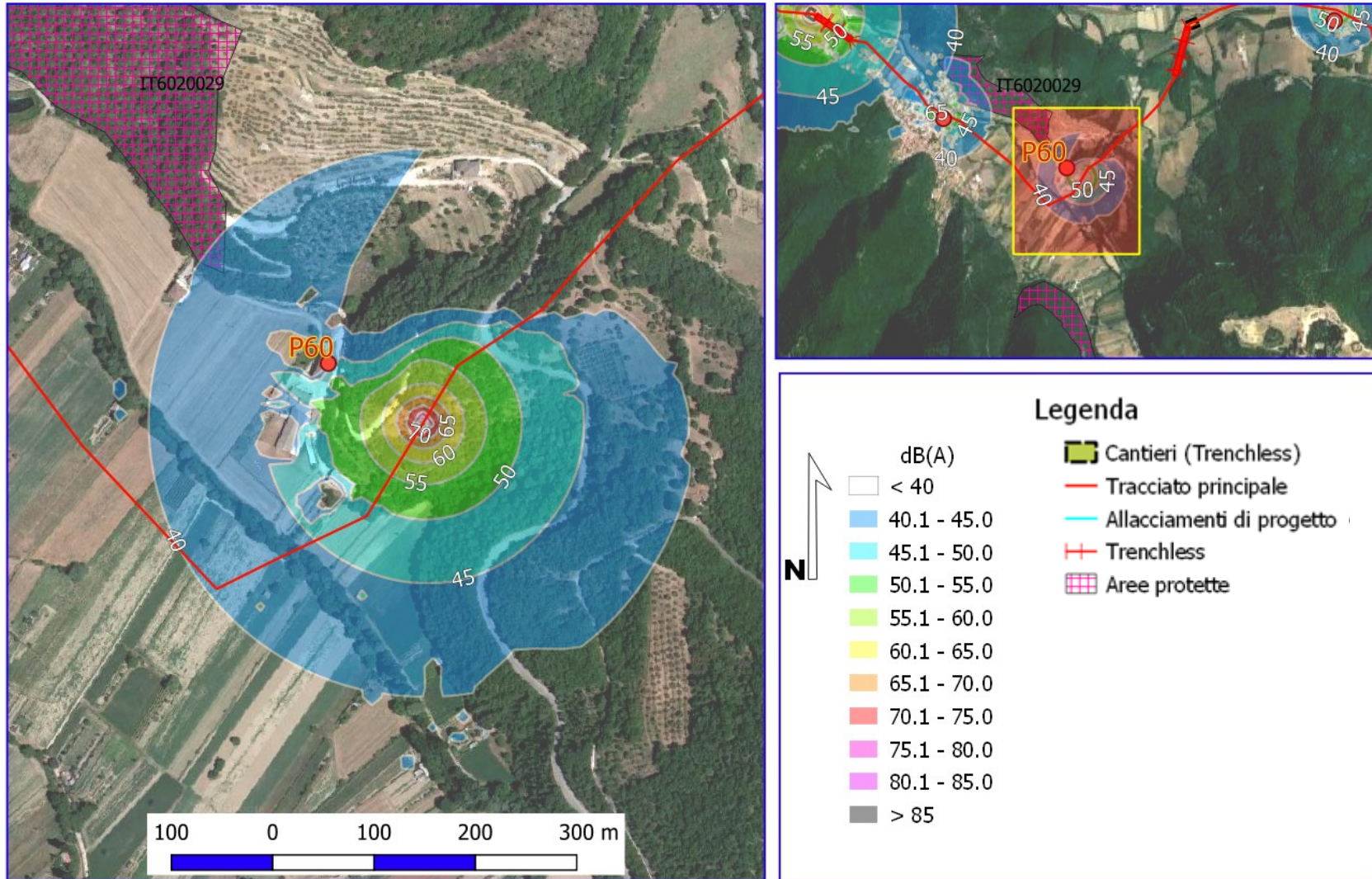
**Rifacimento Metanodotto Chieti - Rieti DN 400 (16"), DP 24 bar**  
**MAPPE ISOFONICHE EMISSIONE ACUSTICA RECETTORE P58 PERIODO DIURNO**



**Rifacimento Metanodotto Chieti - Rieti DN 400 (16"), DP 24 bar**  
**MAPPE ISOFONICHE EMISSIONE ACUSTICA RECETTORE P59 PERIODO DIURNO**

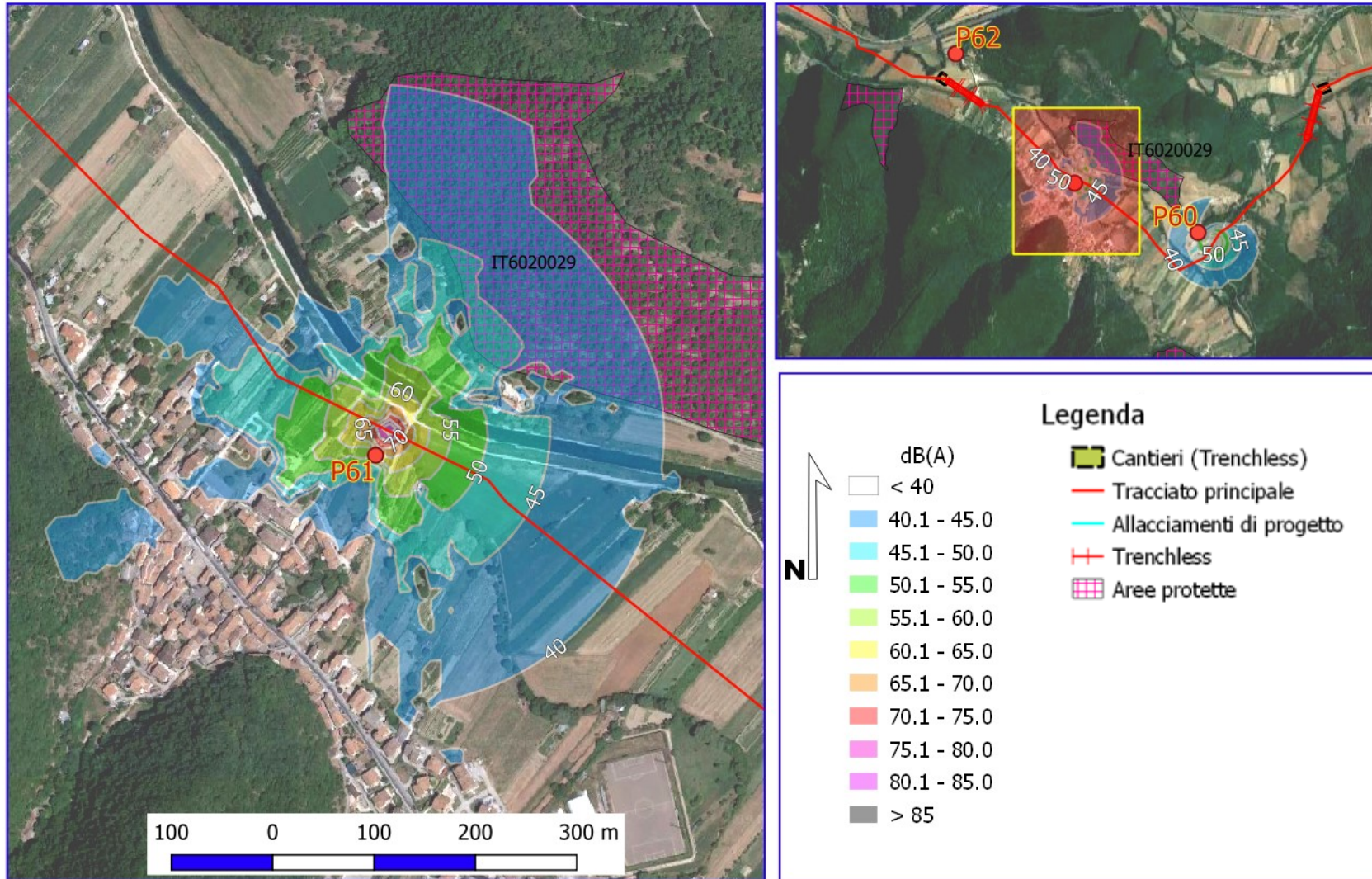


**Rifacimento Metanodotto Chieti - Rieti DN 400 (16"), DP 24 bar**  
**MAPPE ISOFONICHE EMISSIONE ACUSTICA RECETTORE P60 PERIODO DIURNO**

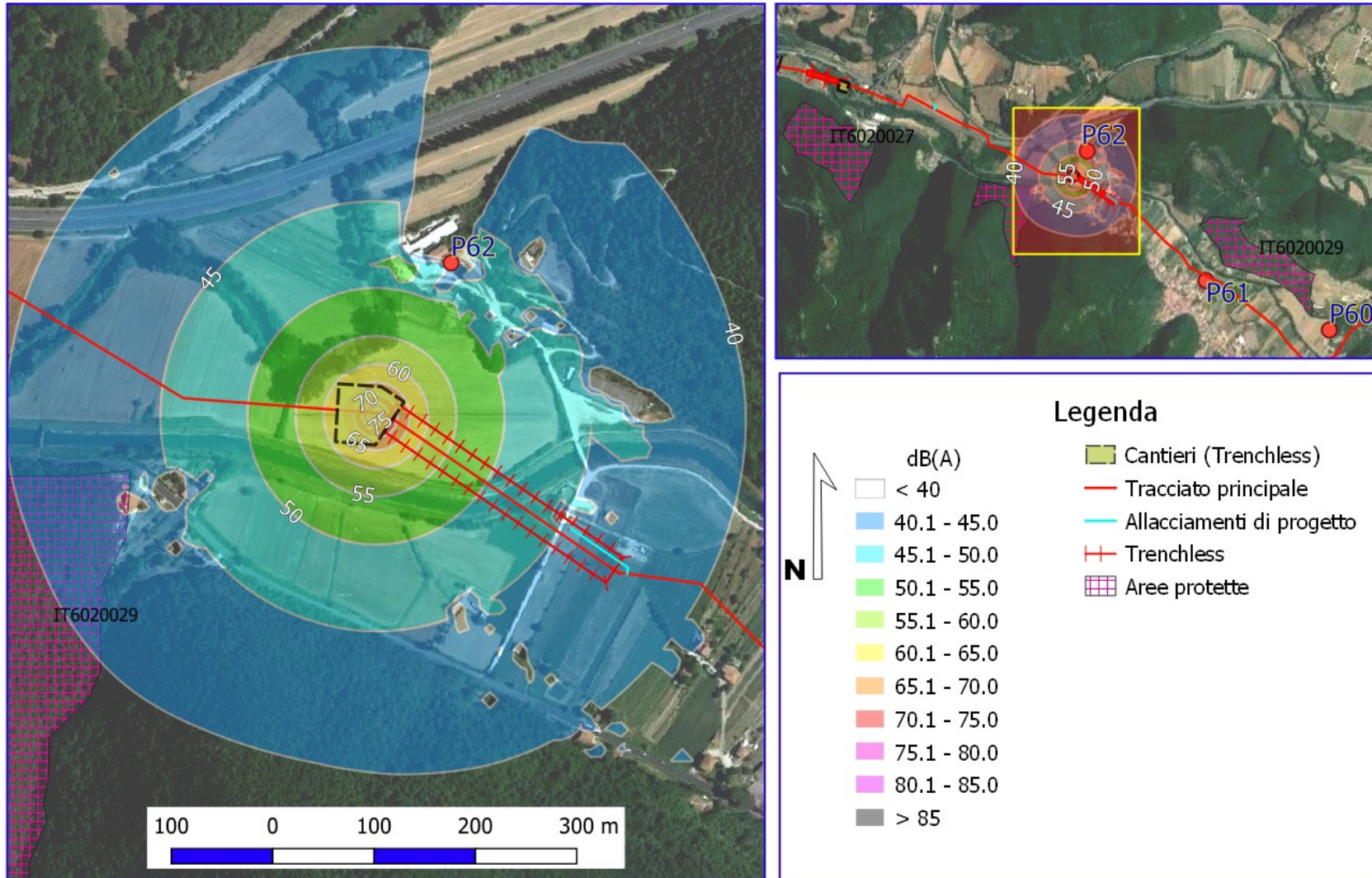




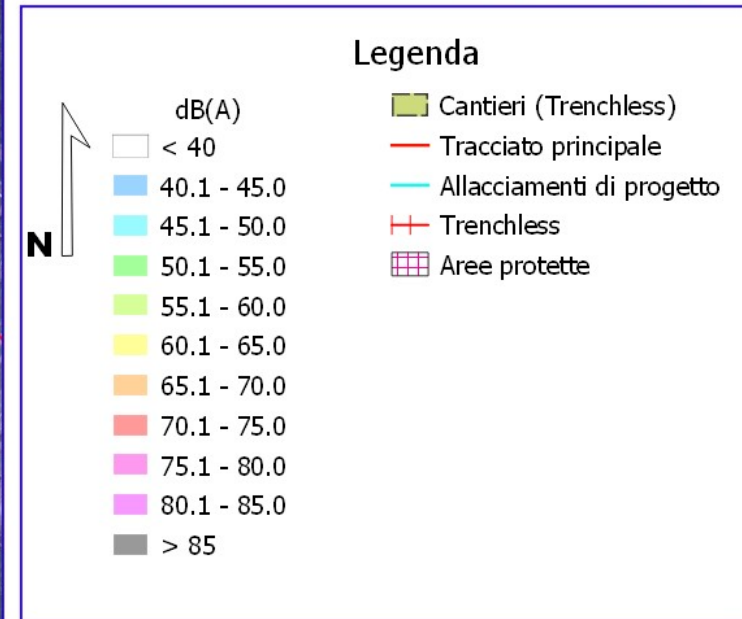
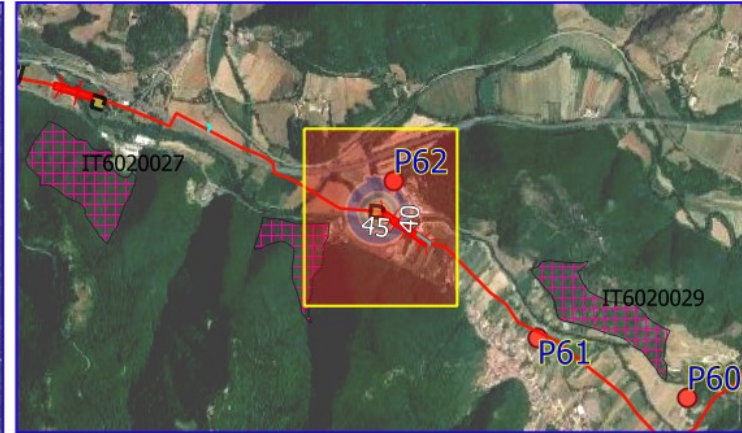
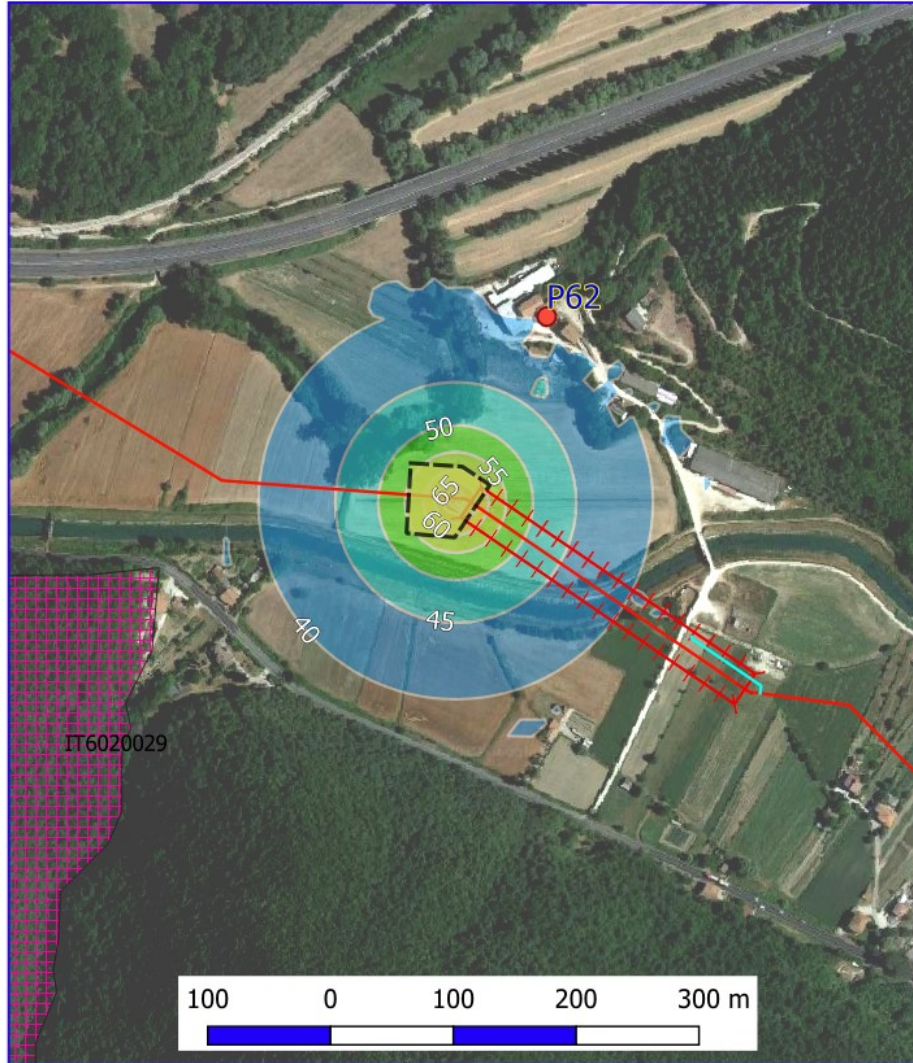
**Rifacimento Metanodotto Chieti - Rieti DN 400 (16"), DP 24 bar**  
**MAPPE ISOFONICHE EMISSIONE ACUSTICA RECETTORE P61 PERIODO DIURNO**



**Rifacimento Metanodotto Chieti - Rieti DN 400 (16"), DP 24 bar**  
**MAPPE ISOFONICHE EMISSIONE ACUSTICA RECETTORE P62 (TOC) PERIODO DIURNO**



**Rifacimento Metanodotto Chieti - Rieti DN 400 (16"), DP 24 bar**  
**MAPPE ISOFONICHE EMISSIONE ACUSTICA RECETTORE P62 (TOC) PERIODO NOTTURNO**



**Rifacimento Metanodotto Chieti - Rieti DN 400 (16"), DP 24 bar**  
**MAPPE ISOFONICHE EMISSIONE ACUSTICA RECETTORE P64 PERIODO DIURNO**

