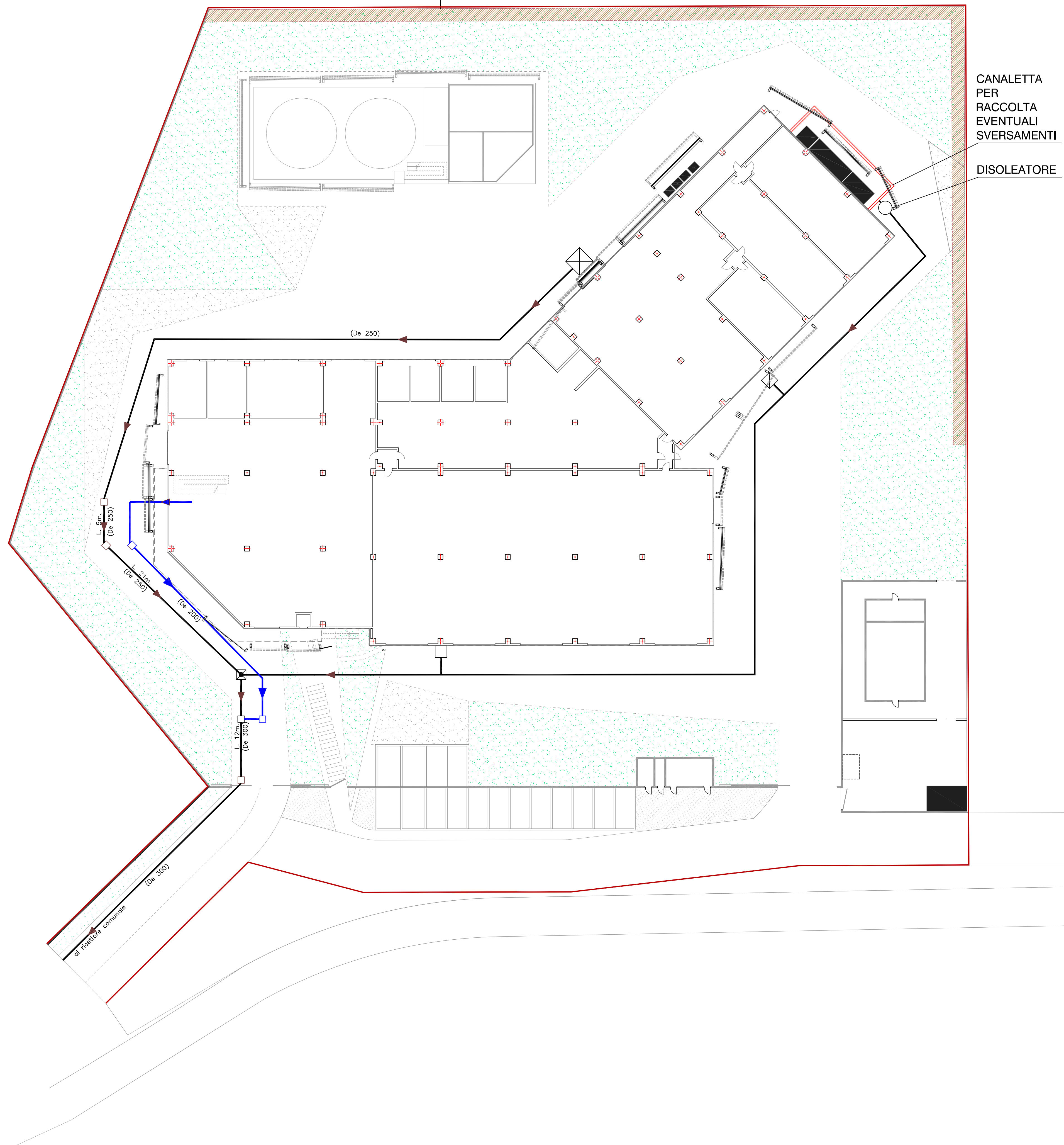
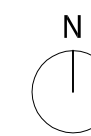












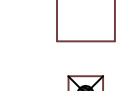



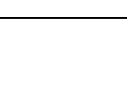
TRINCEA DRENANTE

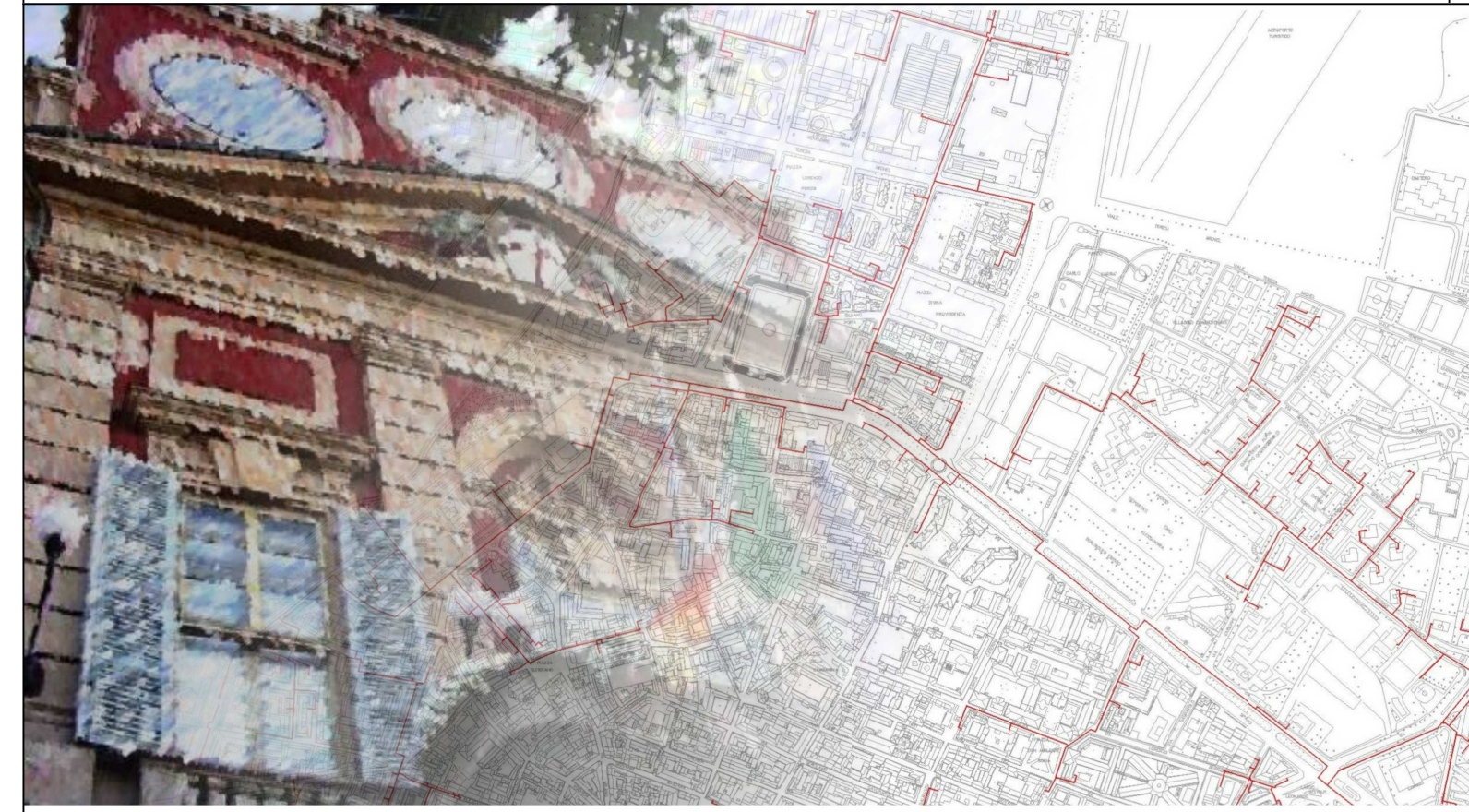
scala 1:250



RETI ACQUE NERE ( simbolo e descrizione)

 Tubazioni acque nere, scarichi industriali:  
 in P.V.C. serie pesante colore rosso avante:  
 pendenza minima dello 0.5 %  
 Tubazioni acque nere, scarichi civili:  
 in P.V.C. serie pesante colore rosso avante:  
 pendenza minima dello 0.5 %

	Tubazioni di sfiato
	POZZETTO CON SIFONE IDRAULICO
	POZZETTO DI DERIVAZIONE
	POZZETTO DI CAMBIO DIREZIONE
	POZZETTO DI CAMBIO DIREZIONE DOLCE
	POZZETTO DI DISPEZIONE
	BACINO CONDENSAGRASSI Ø 80 cm.
	POZZETTO DI ALLACCIAMENTO STRADALE
	POZZETTO DI RACCOLTA EVENTUALI FUORIUSCITE CIRCUITI GLICOLATI
	POZZETTO CONDENSE
	POZZETTO RACCOLTA ACQUA TLR (EVENTUALE SPURGO CALDAIE PER MANUTENZIONE)
	POZZETTO FISCALE (prelievi e controllo)
	Canaletta per raccolta eventuali sversamenti




 PROVINCIA DI ALESSANDRIA  
 COMUNE DI ALESSANDRIA


**COMPLETAMENTO DEL SISTEMA  
 DI TELERISCALDAMENTO  
 DELLA CITTÀ DI ALESSANDRIA**  
**PROGETTO DELLE OPERE  
 CENTRALE SUD**

Elaborato ARCH V012  
**ACQUE NERE**

Progettisti:  


Scala: 1:250

Codifica elaborato: B1 ARCH V012  
 Versione: A - Emissione: Gennaio 2020  
 File: B1\_ARCH\_V012.A.pdf

  
 ORDINE DEGLI INGEGNERI  
 DELLA PROVINCIA DI ALESSANDRIA  
 11693 Dott. Ing. Riccardo Mollo