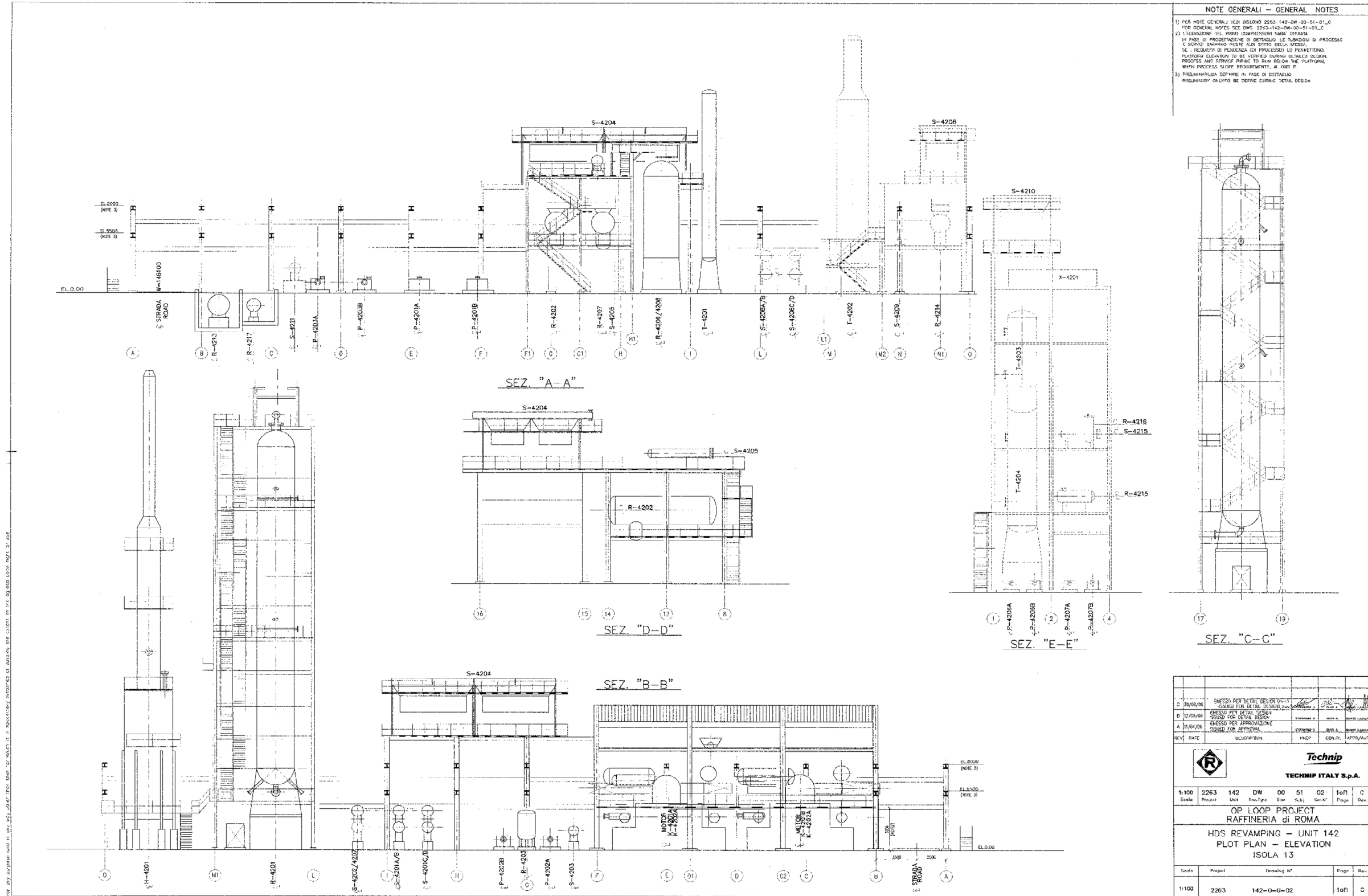


NOTE GENERALI - GENERAL NOTES

- 1) TUTTE LE DIMENSIONI SONO ESPRESSE IN MILLIMETRI.
ALL DIMENSIONS ARE IN MILLIMETERS.
- 2) T.L. INDICA ELEVAZIONE LINEA DI TANGENZA.
T.L. DENOTES TANGENT LINE ELEVATION.
- 3) T.C. INDICA ELEVAZIONE ASSE.
T.C. DENOTES CENTER LINE.
- 4) T.O.S. INDICA ELEVAZIONE TOP STRUTTURALE.
T.O.S. DENOTES TOP OF STRUCTURE ELEVATION.
- 5) TUTTE LE ELEVAZIONI SONO RIFERITE AL PUNTO AZI DELLA PROVINCIAZIONE CONSIDERATO ZERO E CORRISPONDENTE A +8.50m.
SOVRA IL LIVELLO DEL MARE.
ALL ELEVATIONS ARE REFERRED TO RIGHT POINT OF THE PROVINCE CONSIDERED ZERO AND CORRESPONDING TO 8.50 ABOVE SEA LEVEL.
- 6) - - - - - ROMA ANTICISANTIFICATA FUTURE.
- - - - - ROMA ANTICISANTIFICATA FUTURE.
- - - - - ROMA ANTICISANTIFICATA FUTURE.

REV.	DESCRIPTION	DATE	BY	CHK
142-4-401
142-4-402
142-4-403
142-4-404
142-4-405
142-4-406
142-4-407
142-4-408
142-4-409
142-4-410
142-4-411
142-4-412
142-4-413
142-4-414
142-4-415
142-4-416
142-4-417
142-4-418
142-4-419
142-4-420
142-4-421
142-4-422
142-4-423
142-4-424
142-4-425
142-4-426
142-4-427
142-4-428
142-4-429
142-4-430
142-4-431
142-4-432
142-4-433
142-4-434
142-4-435
142-4-436
142-4-437
142-4-438
142-4-439
142-4-440
142-4-441
142-4-442
142-4-443
142-4-444
142-4-445
142-4-446
142-4-447
142-4-448
142-4-449
142-4-450

142-4-451
142-4-452
142-4-453
142-4-454
142-4-455
142-4-456
142-4-457
142-4-458
142-4-459
142-4-460
142-4-461
142-4-462
142-4-463
142-4-464
142-4-465
142-4-466
142-4-467
142-4-468
142-4-469
142-4-470
142-4-471
142-4-472
142-4-473
142-4-474
142-4-475
142-4-476
142-4-477
142-4-478
142-4-479
142-4-480

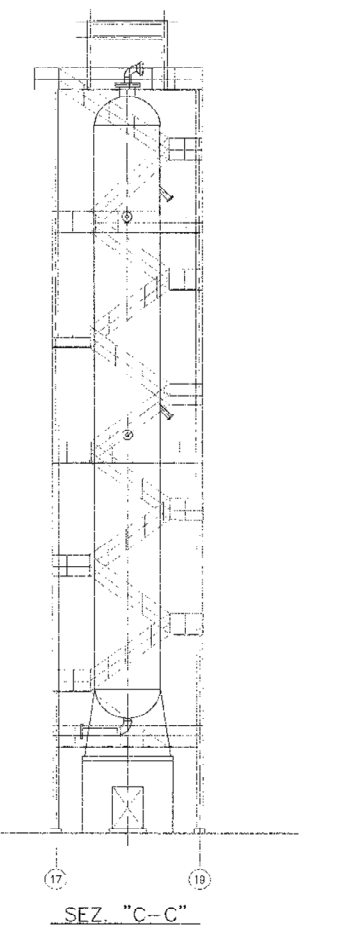


NOTE GENERALI - GENERAL NOTES

1) PER NOTE GENERALI VEDI DISCIPLINA 2263-142-00-00-01-01-C
FOR GENERAL NOTES SEE DWG. 2263-142-00-00-01-01-C

2) L'ELEVAZIONE DEL PRIMO COMPRESSORE SARA' DEFINITA IN FASE DI PROGETTAZIONE O DETAGLIO LE TUBAZIONI DI PROCESSO E SOTTOELEVAMENTO PER IL SITO SOTTO ESSEA MEDIA. SE I REQUISITI DI PRESSIONE DEI PROCESSI LO PERMETTONO, POCHESSIMO ELEVANDO SI PUO' VERIFICARE QUALCHE INCREMENTO PRESSURE AND STRIPPER PRESSURE TO RUN BELOW THE PLATFORM, WITH PROCESS SLOPE REQUIREMENTS, AT FIRST ST.

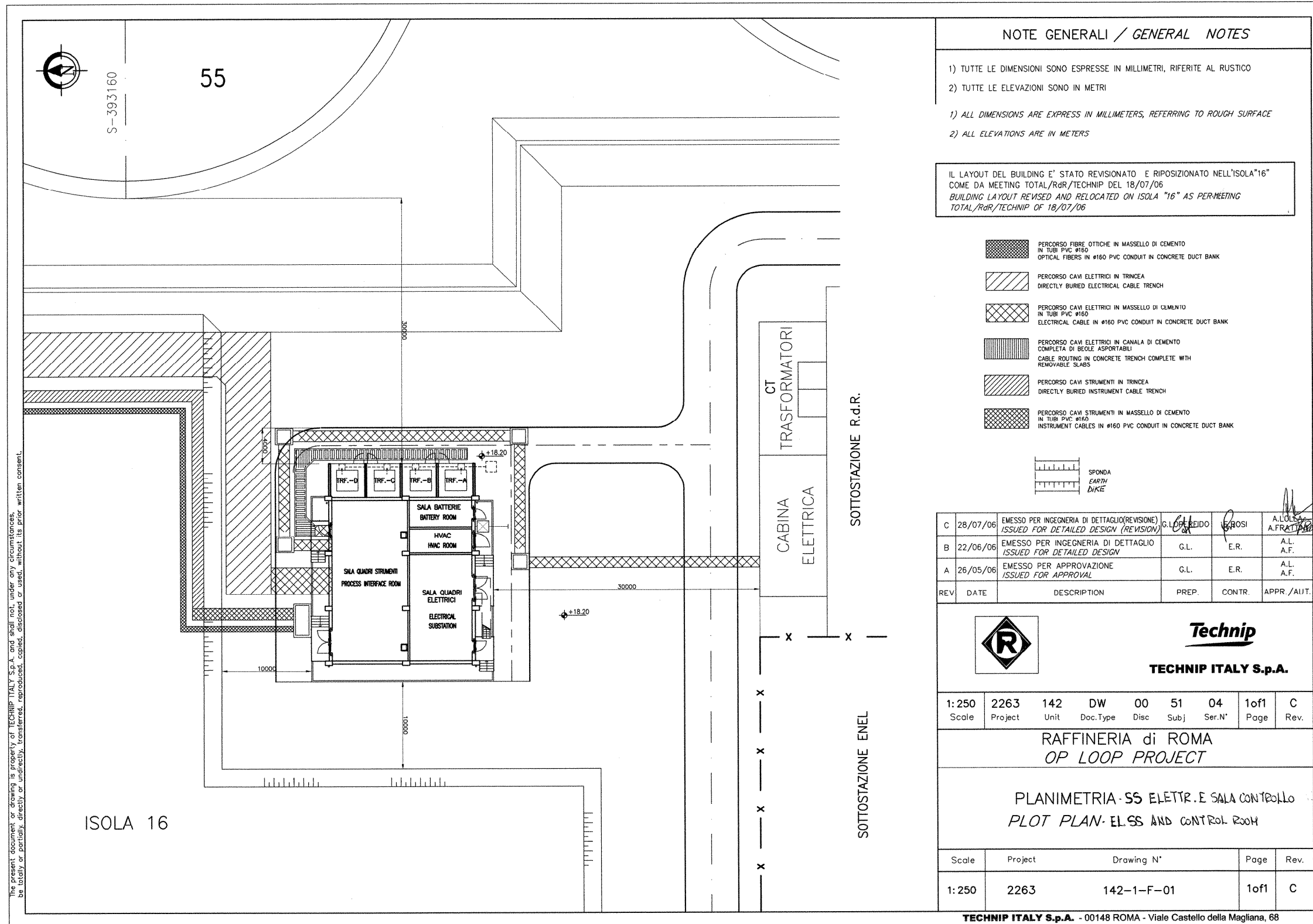
3) PRELIMINARIA DEFINITA IN FASE DI DETAGLIO PRELIMINARY ON-LINE BE DEFINED EURRAC DETAIL DESIGN



REV. DATE	DESCRIPTION	DESIGNER	CHECKER	APPROVER

Technip
TECHNIP ITALY S.p.A.

Scale	2263	142	DW	00	51	02	1 of 1	C
Proj. No.								
OP LOOP PROJECT RAFFINERIA di ROMA HDS REVAMPING - UNIT 142 PLOT PLAN - ELEVATION ISOLA 13								
Scale	Proj. No.	Proj. No.	Proj. No.	Proj. No.	Proj. No.	Proj. No.	Page	Rev.
1:100	2263	142	DW	00	51	02	1 of 1	C

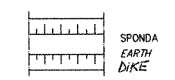


NOTE GENERALI / GENERAL NOTES

- 1) TUTTE LE DIMENSIONI SONO ESPRESSE IN MILLIMETRI, RIFERITE AL RUSTICO
 - 2) TUTTE LE ELEVAZIONI SONO IN METRI
- 1) ALL DIMENSIONS ARE EXPRESS IN MILLIMETERS, REFERRING TO ROUGH SURFACE
- 2) ALL ELEVATIONS ARE IN METERS

IL LAYOUT DEL BUILDING E' STATO REVISIONATO E RIPOSIZIONATO NELL'ISOLA "16" COME DA MEETING TOTAL/RdR/TECHNIP DEL 18/07/06
 BUILDING LAYOUT REVISED AND RELOCATED ON ISOLA "16" AS PER MEETING TOTAL/RdR/TECHNIP OF 18/07/06

- PERCORSO FIBRE OTTICHE IN MASSELLO DI CEMENTO IN TUBI PVC #160
OPTICAL FIBERS IN #160 PVC CONDUIT IN CONCRETE DUCT BANK
- PERCORSO CAVI ELETTRICI IN TRINCEA
DIRECTLY BURIED ELECTRICAL CABLE TRENCH
- PERCORSO CAVI ELETTRICI IN MASSELLO DI CEMENTO IN TUBI PVC #160
ELECTRICAL CABLE IN #160 PVC CONDUIT IN CONCRETE DUCT BANK
- PERCORSO CAVI ELETTRICI IN CANALA DI CEMENTO COMPLETA DI BEOLE ASPORTABILI
CABLE ROUTING IN CONCRETE TRENCH COMPLETE WITH REMOVABLE SLABS
- PERCORSO CAVI STRUMENTI IN TRINCEA
DIRECTLY BURIED INSTRUMENT CABLE TRENCH
- PERCORSO CAVI STRUMENTI IN MASSELLO DI CEMENTO IN TUBI PVC #160
INSTRUMENT CABLES IN #160 PVC CONDUIT IN CONCRETE DUCT BANK



C	28/07/06	EMESSO PER INGEGNERIA DI DETTAGLIO (REVISIONE) ISSUED FOR DETAILED DESIGN (REVISION)	G. LOPEZ	E. ROSI	A. OLIVIERO A. FRATTINI
B	22/06/06	EMESSO PER INGEGNERIA DI DETTAGLIO ISSUED FOR DETAILED DESIGN	G.L.	E.R.	A.L. A.F.
A	26/05/06	EMESSO PER APPROVAZIONE ISSUED FOR APPROVAL	G.L.	E.R.	A.L. A.F.
REV	DATE	DESCRIPTION	PREP.	CONTR.	APPR./AUT.

Technip
TECHNIP ITALY S.p.A.

1:250	2263	142	DW	00	51	04	1of1	C
Scale	Project	Unit	Doc.Type	Disc	Subj	Ser.N°	Page	Rev.

RAFFINERIA di ROMA
 OP LOOP PROJECT

PLANIMETRIA - SS ELETTR. E SALA CONTROLLO
 PLOT PLAN - ELSS AND CONTROL ROOM

Scale	Project	Drawing N°	Page	Rev.
1:250	2263	142-1-F-01	1of1	C

TECHNIP ITALY S.p.A. - 00148 ROMA - Viale Castello della Magliana, 68

The present document or drawing is property of TECHNIP ITALY S.p.A. and shall not, under any circumstances, be totally or partially, directly or indirectly, transferred, reproduced, copied, disclosed or used, without its prior written consent.

GD Number XXXXXX S16 Step XXXX
 S16 Unit XXX
 CAD Model 2263-142-DW-0051-04-01_C.dwg