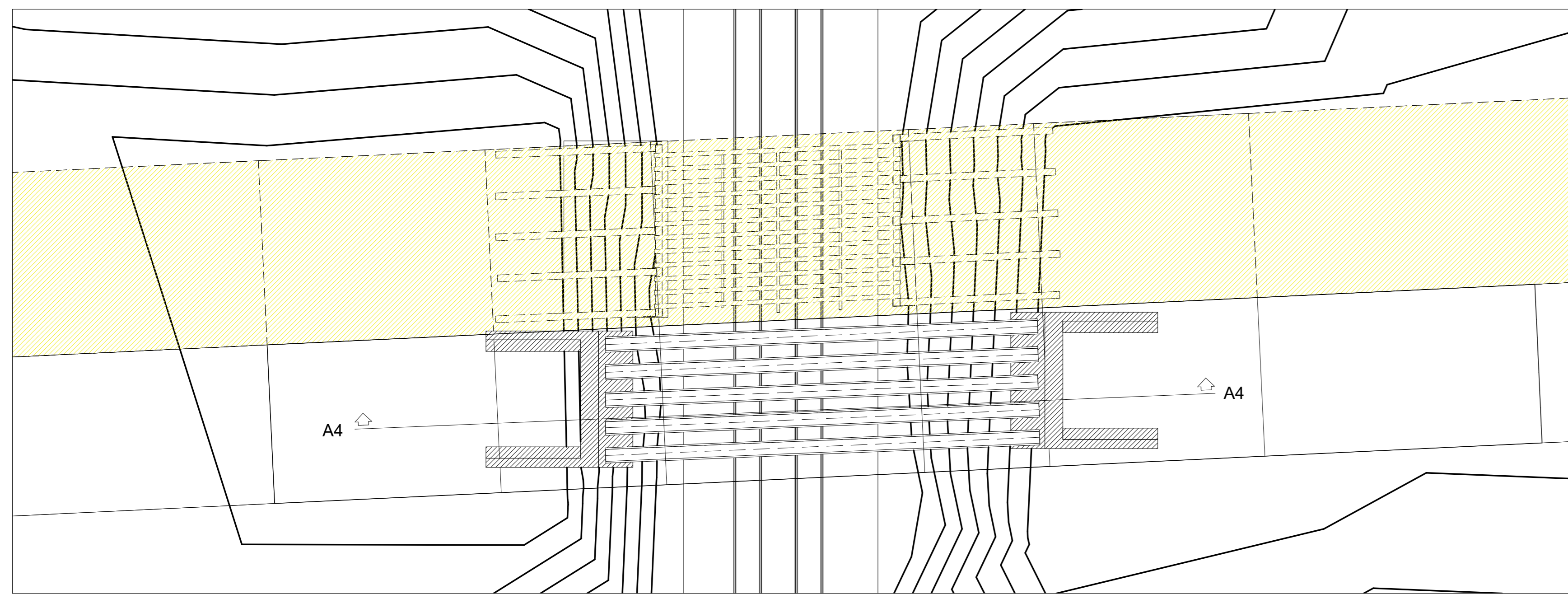
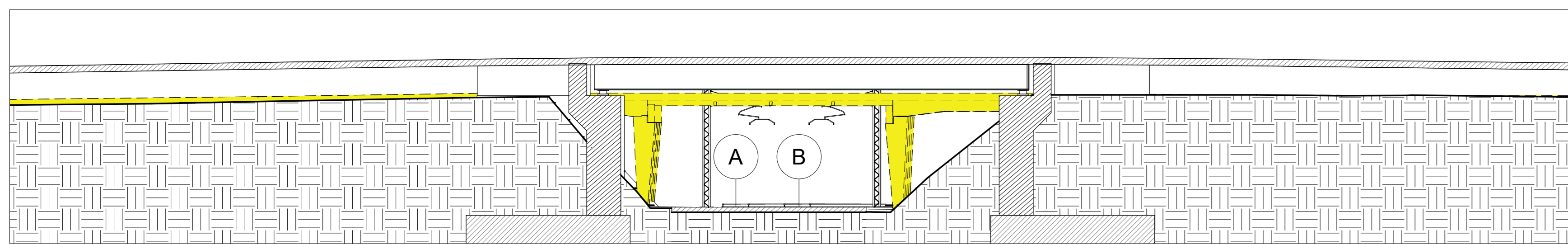


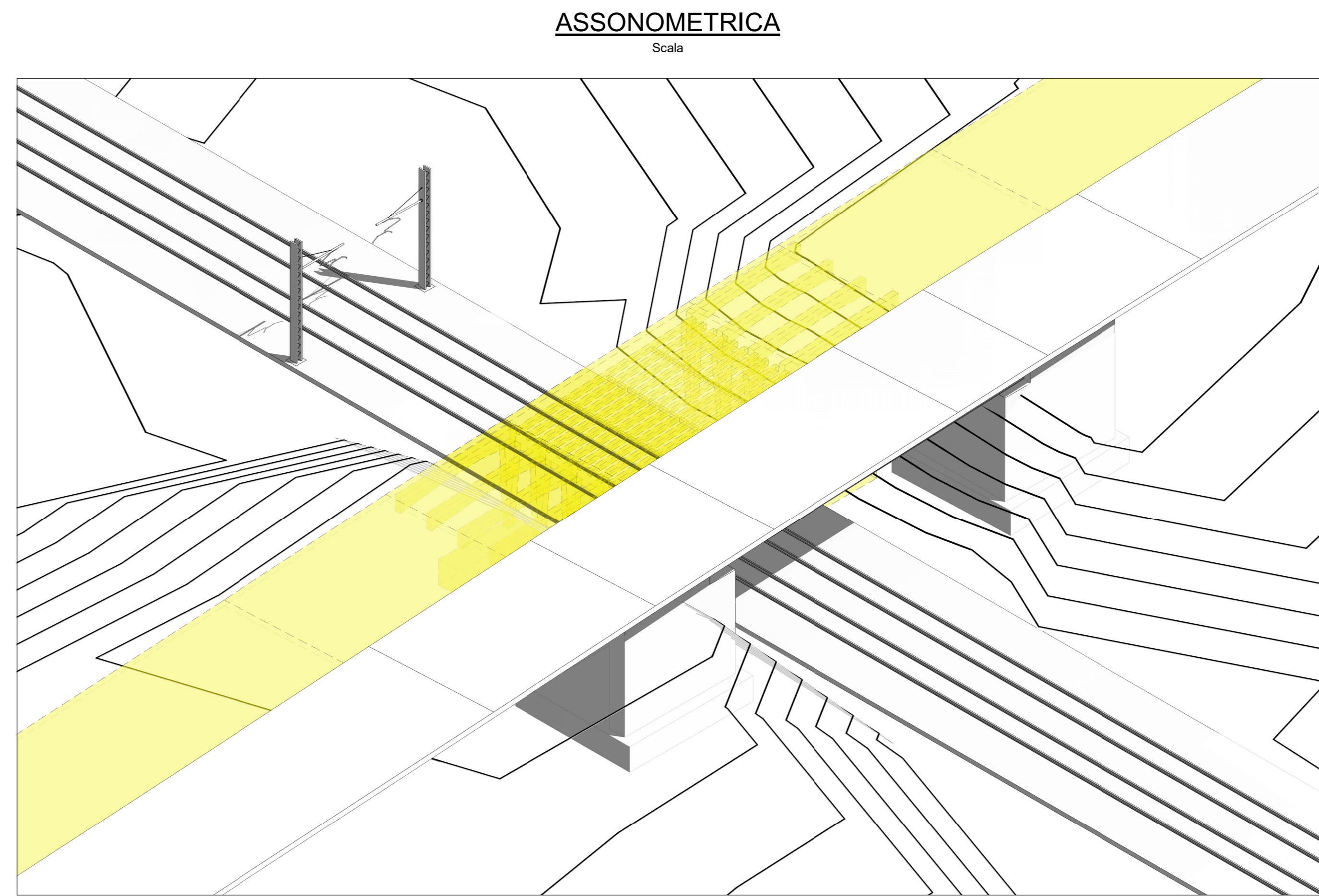
DEMOLIZIONE SPALLA SINISTRA



PIANTA
Scala 1:200

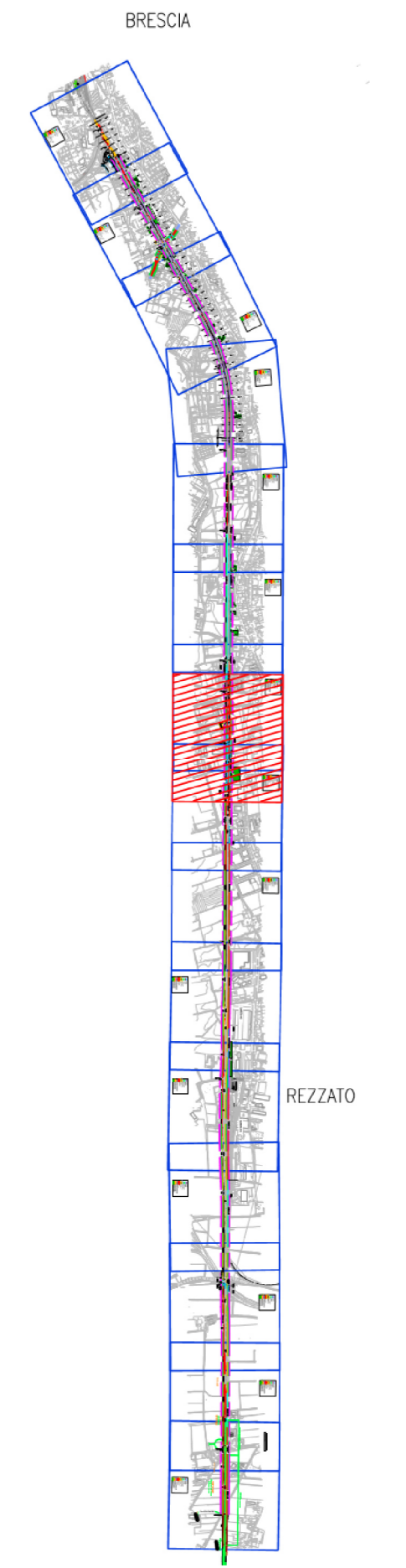


SEZIONE A-A
Scala 1:200

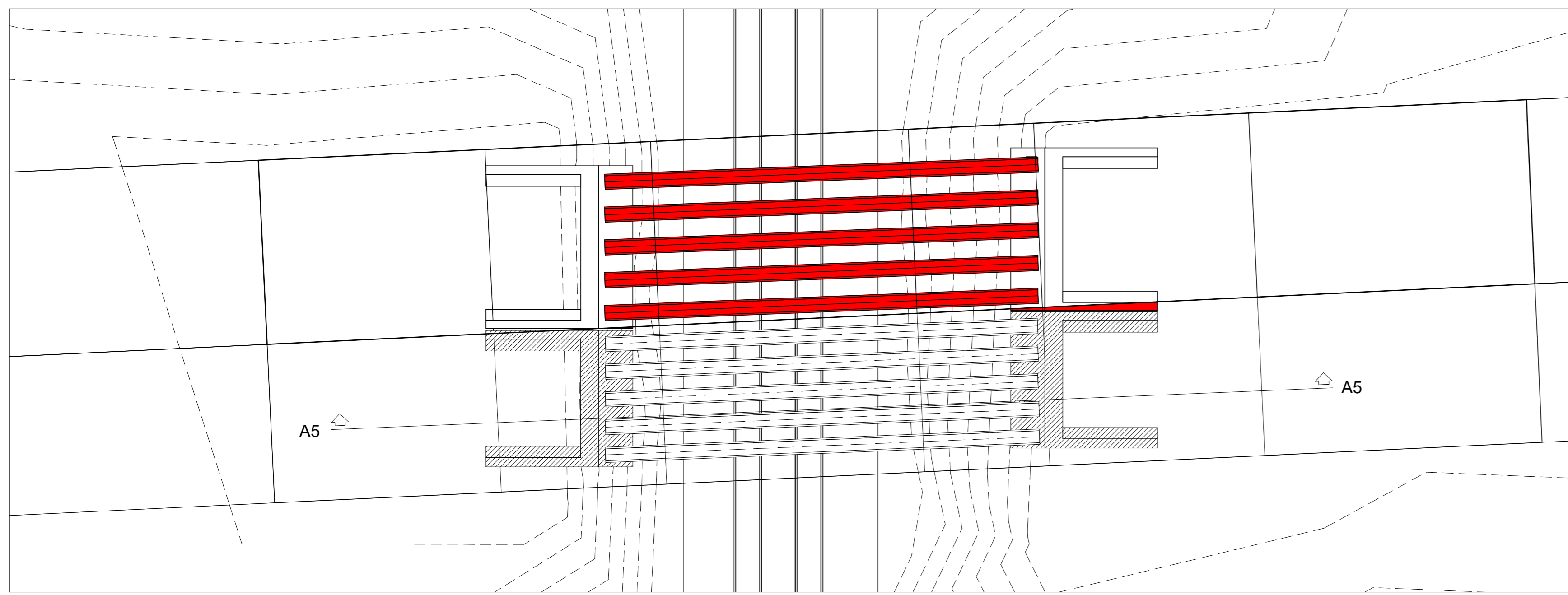


ASSONOMETRICA
Scala

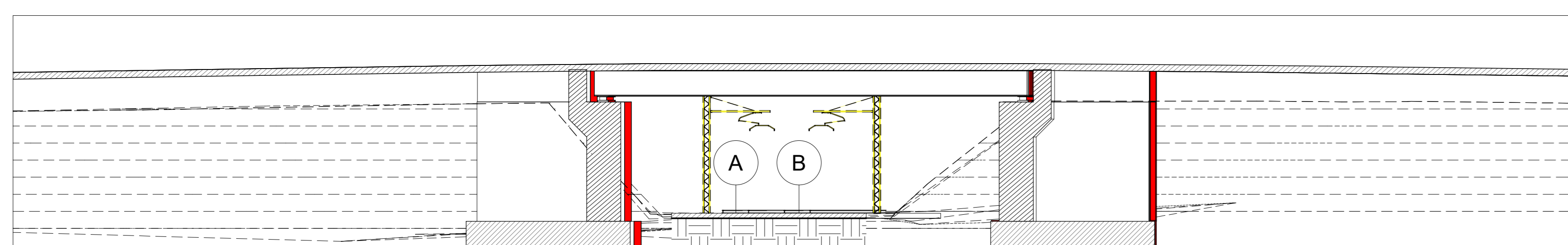
KEY - PLAN
Scala 1:50000



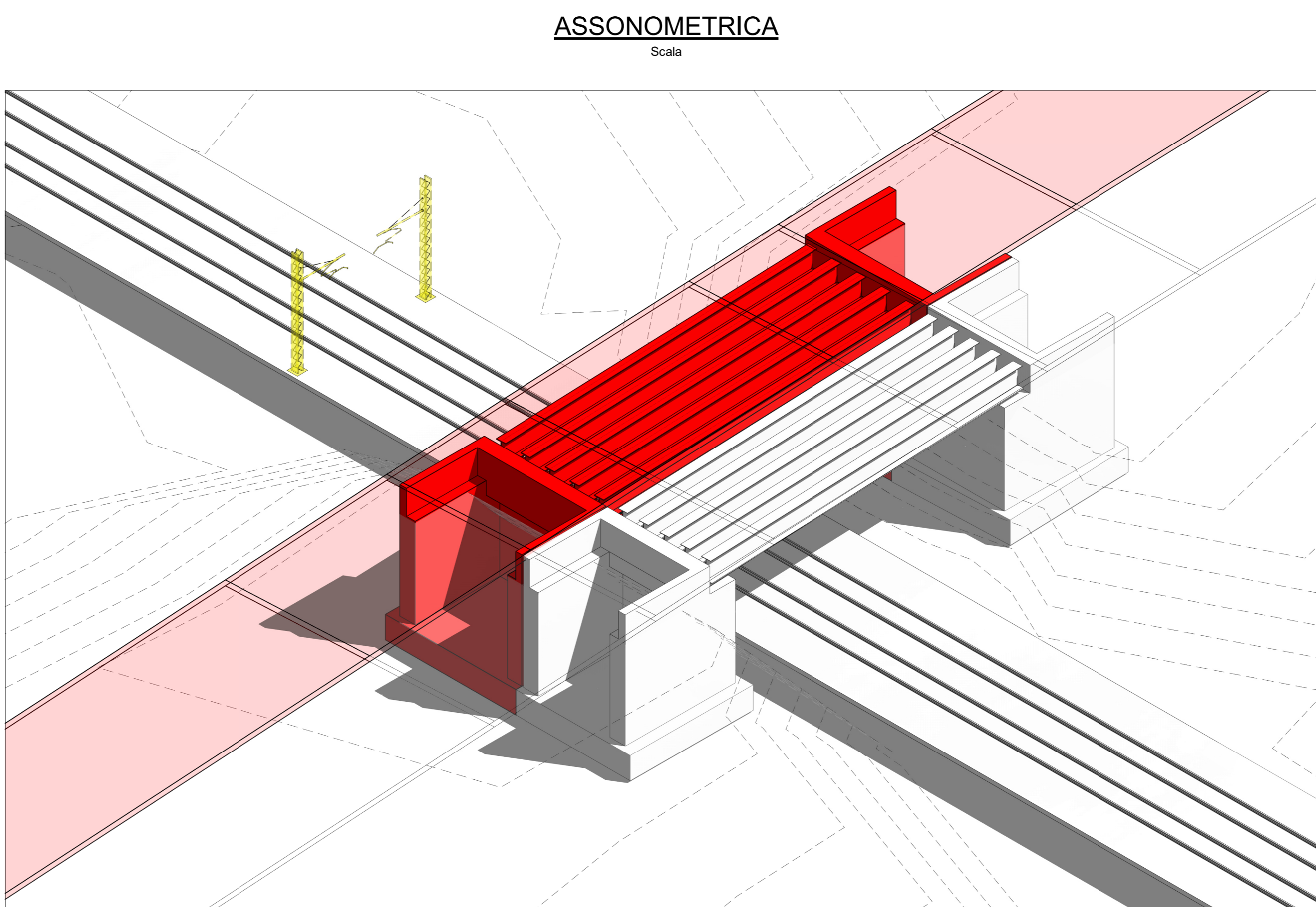
RICOSTRUZIONE SINISTRA



PIANTA
Scala 1:200

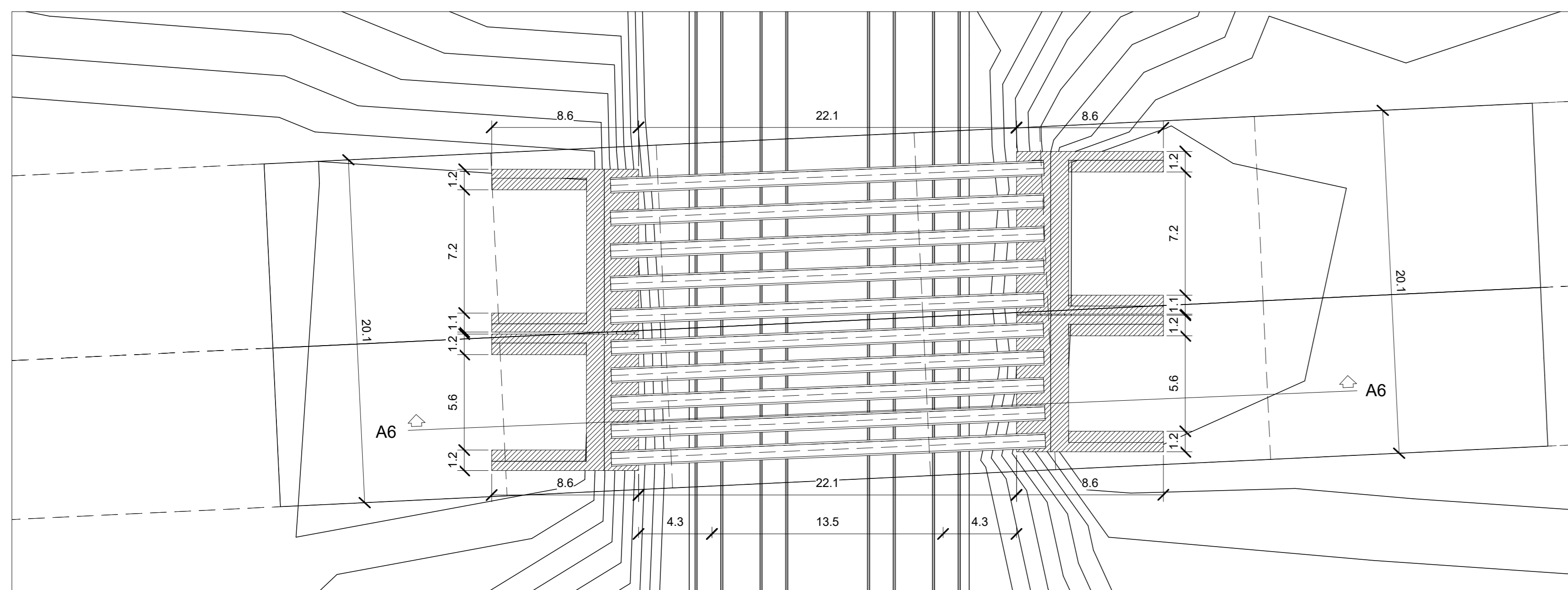


SEZIONE A-A
Scala 1:200

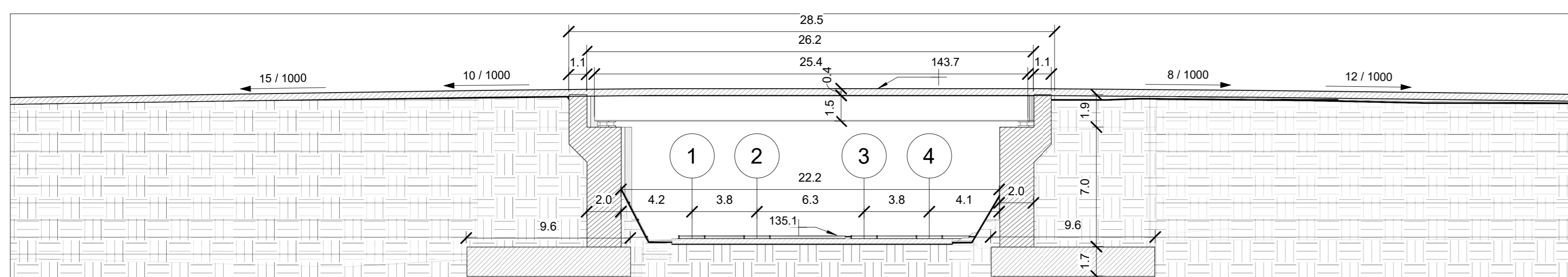


ASSONOMETRICA
Scala

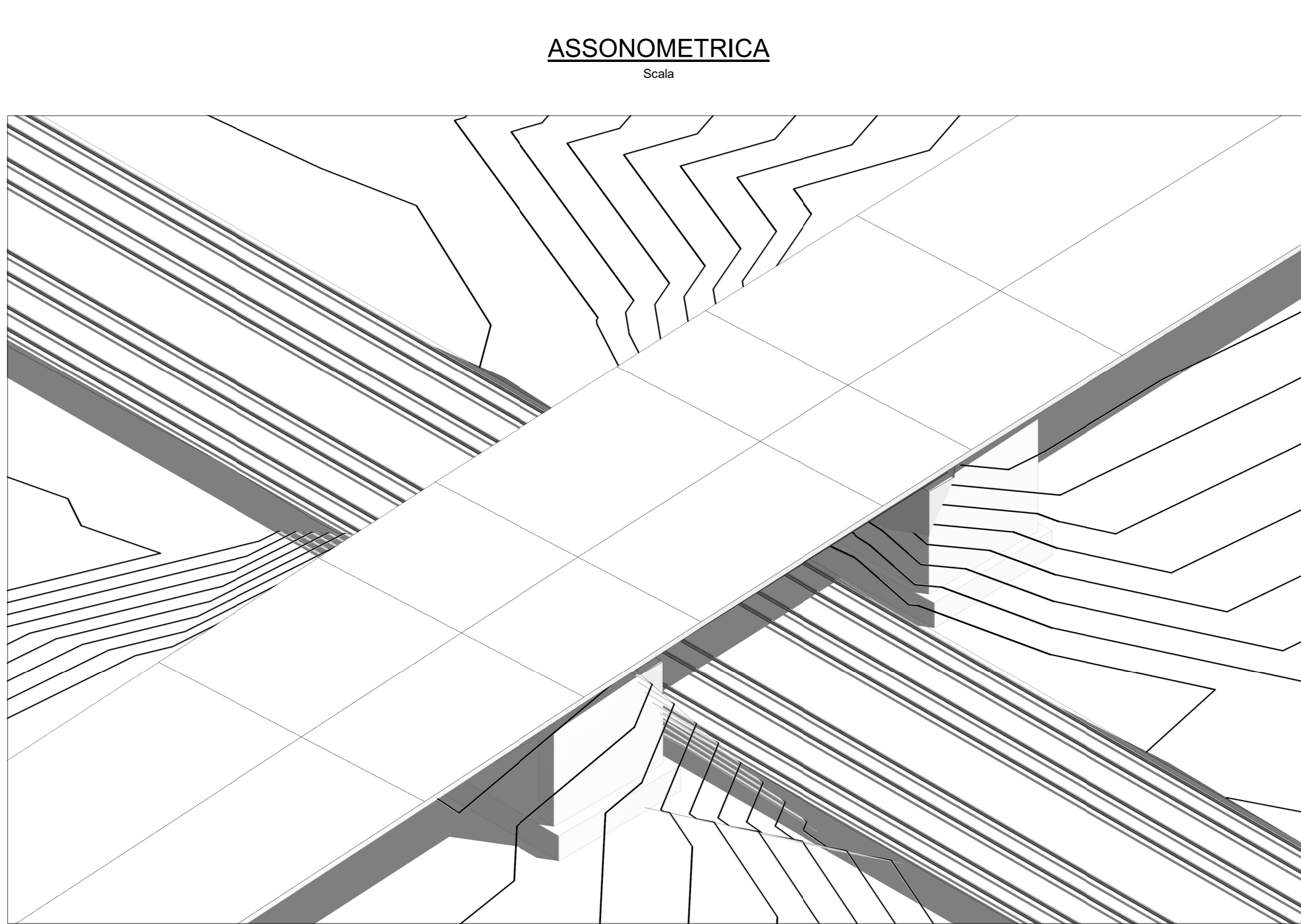
COMPLETATO



PIANTA
Scala 1:200



SEZIONE A-A
Scala 1:200



ASSONOMETRICA
Scala

COMMITTENTE:



PROGETTAZIONE:



U.O. INFRASTRUTTURE NORD

PROGETTO PRELIMINARE

INFRASTRUTTURE FERROVIARIE STRATEGICHE DEFINITE DALLA LEGGE OBIETTIVO N. 443/01

LINEA A.V. /A.C. TORINO - VENEZIA Tratta MILANO - VERONA
Lotto funzionale QUADRUPPLICAMENTO EST IN USCITA DA BRESCIA

Fasi realizzative sovrappasso su via Serenissima 2/2

SCALA:

COMMESSA LOTTO FASE ENTE TIPO DOC. OPERA/DISCIPLINA Progr. REV.

INOW 00 R 26 PX 1V0200 002 A

Rev.	Descrizione	Redatto	Data	Verificato	Data	Approvato	Data	Autorizzato/Data
A	Emissione in bozza	P. Luciani		A. Battistini	14/3	A. Cattaneo		F. Sacchi marzo 2010

File: INOW00R26PX1V020002A

n. Etab:

CUP: F81H9100000008