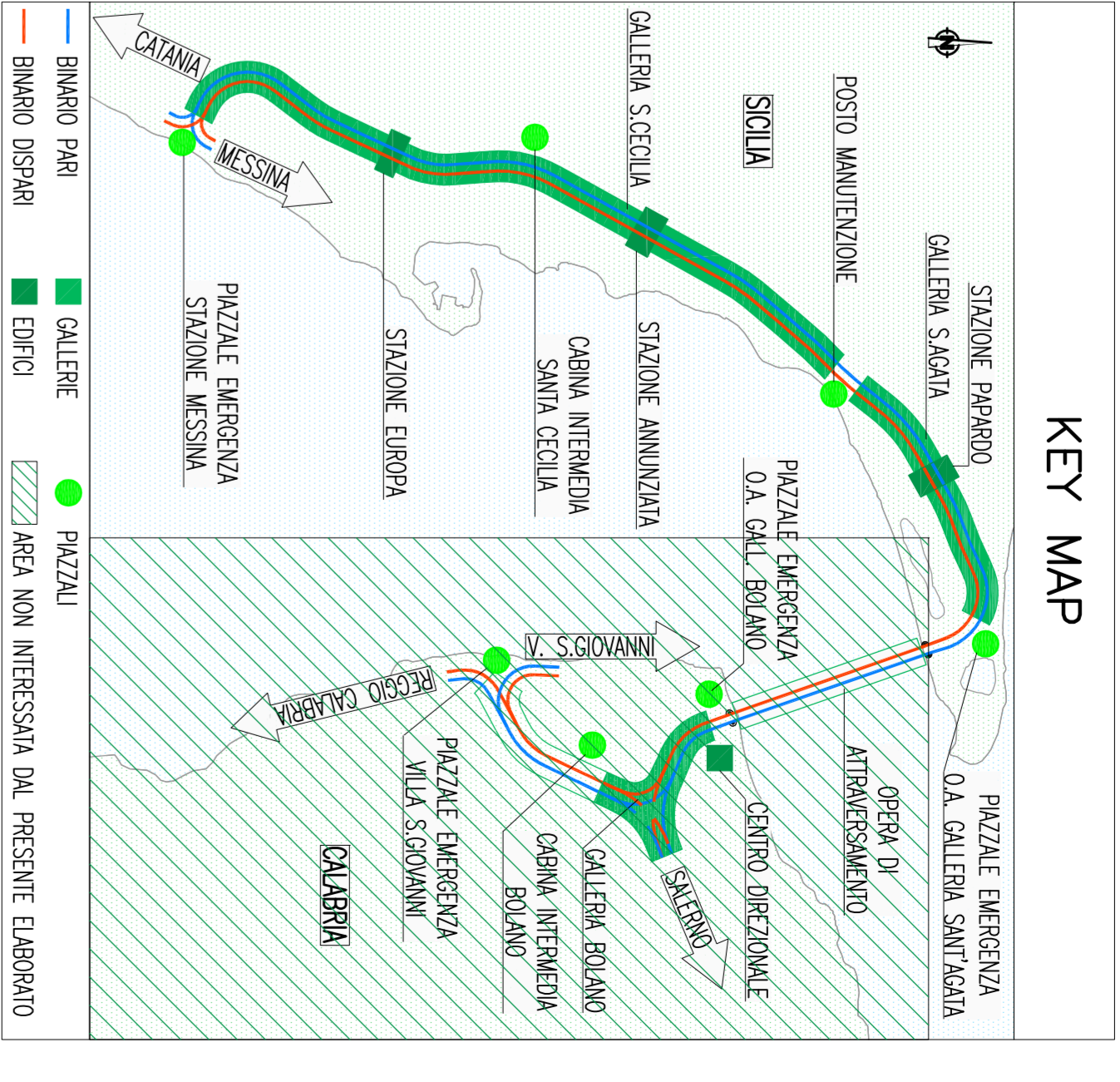


NOTE GENERALI

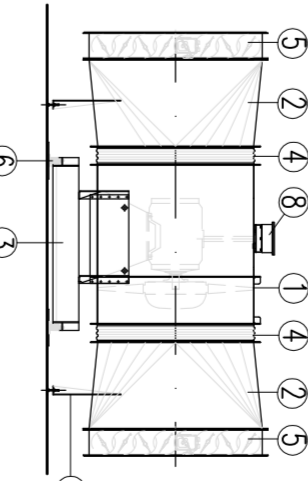
KEY MAP



SIMBOLOGIA - TIPICO VENTILATORE

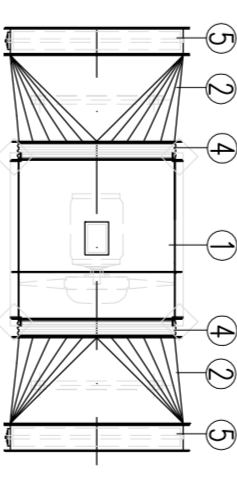
VENTILATORE ASSEMBLE ORIZZONTALE

VISTA LATERALE



VENTILATORE ASSEMBLE ORIZZONTALE

VISTA IN PIANA



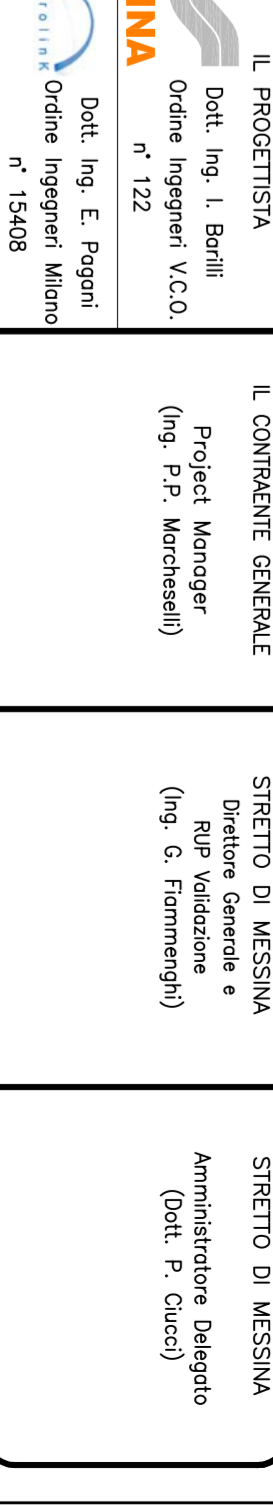
- 1 - VENTILATORE ASSEMBLE ORIZZONTALE
2 - SERRAMENTI ANTIRUMORE
3 - ISOLAMENTO ANTIRUMORE
4 - CANTO ANTIRUMORE
5 - SERRAMENTI DI INTERCETTAZIONE VENTILAZIONE
6 - SERRAMENTI AERODINAMICI
7 - SOSTIZIONE RICORDO CROCIEREE/RETROVANGUERE
8 - COSTITUIVITA ALTERNATIVE MOTORIE

NOTA GENERALE: LE CARATTERISTICHE DEI MATERIALI E DELLE APPROPRIETA' SONO ILLUSTRATE NEL DOCUMENTO COGNOMERFID0000000000000003 - 'SPECIFICHE TECNICHE IMPIANTI TECNOLOGICI STAZIONI METROPOLITANE'



PONTE SULLO STRETTO DI MESSINA
PROGETTO DEFINITIVO
EUROLINK S.C.S.P.A.

SOCIETA' ITALIANA PER CONCRETE E PAVIMENTI S.p.A. (Materdomini)
COOPERATIVA MARCONI S.p.A. (Materdomini)
ISHIKAWAYAMA - HERBATA HEAVY INDUSTRIES CO.,LTD. (Materdomini)



COLLEGAMENTI SICILIA
STAZIONI - IMPIANTI
PIANO 1° LIVELLO TECNICO

Table with 2 columns: DESCRIZIONE and QUANTITA'. Contains technical specifications for various components.

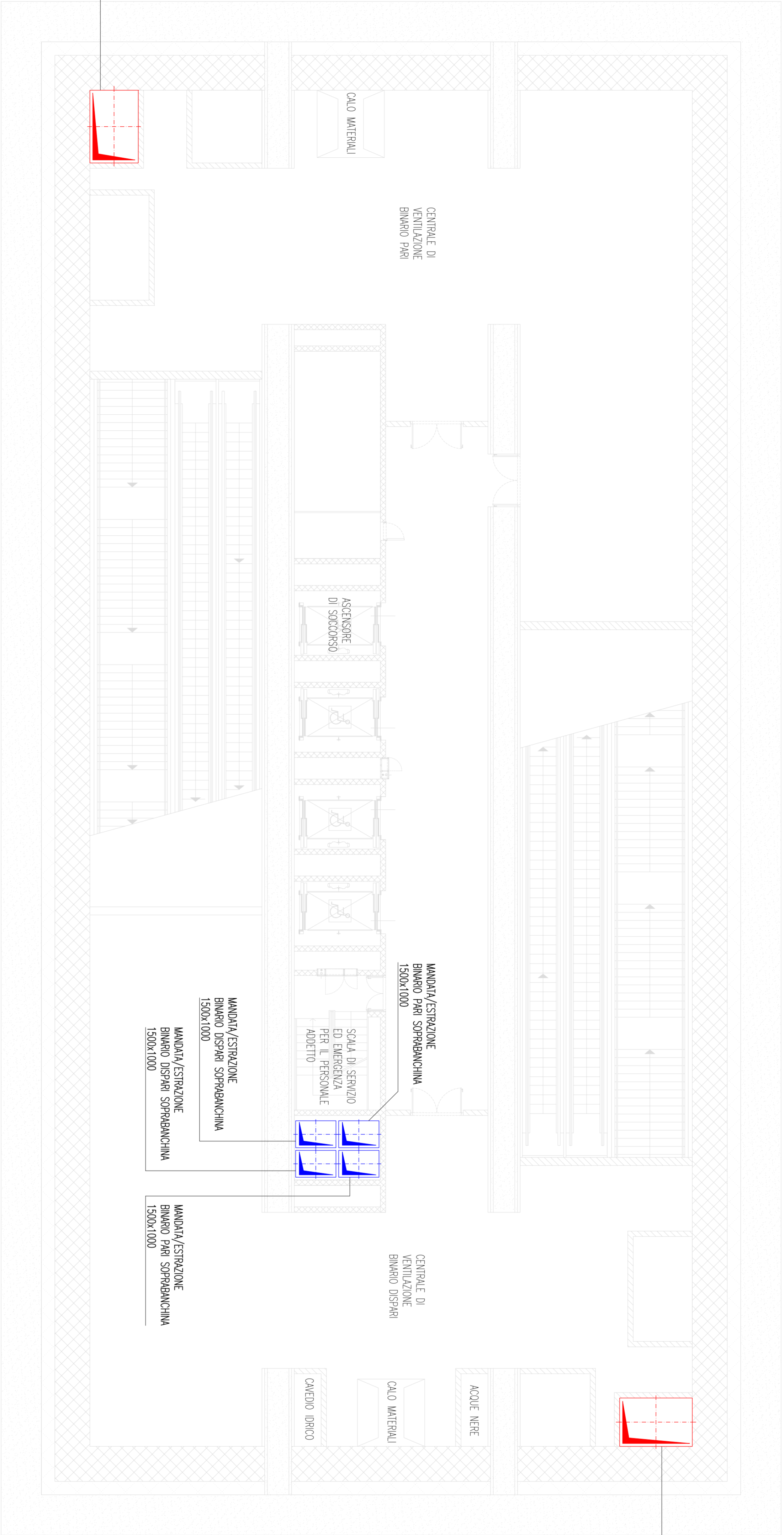


Table with 2 columns: SIMBOLOGIA and description. Lists symbols for various air filtration and distribution systems.

Table with 2 columns: SIMBOLOGIA and description. Lists symbols for various air circulation and control systems.

Table with 2 columns: SIMBOLOGIA and description. Lists symbols for various air conditioning and filtration systems.

Table with 2 columns: SIMBOLOGIA and description. Lists symbols for various air conditioning and filtration systems.

Table with 2 columns: VALUOLE E TIRAZIONI and description. Lists specifications for various air conditioning and filtration systems.