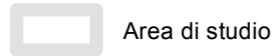
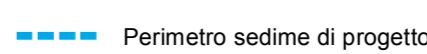

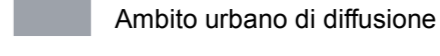
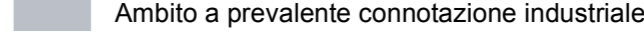
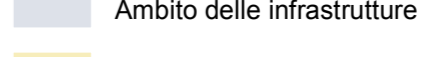
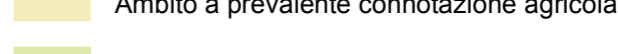
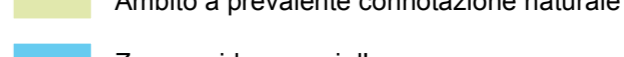
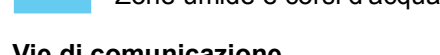

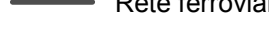


-  Area di studio
-  Perimetro sedime attuale
-  Perimetro sedime di progetto

Assetto territoriale di area vasta

-  Nuclei di antica formazione
-  Ambito urbano di diffusione
-  Ambito a prevalente connotazione industriale
-  Ambito delle infrastrutture
-  Ambito a prevalente connotazione agricola
-  Ambito a prevalente connotazione naturale
-  Zone umide e corsi d'acqua

Vie di comunicazione

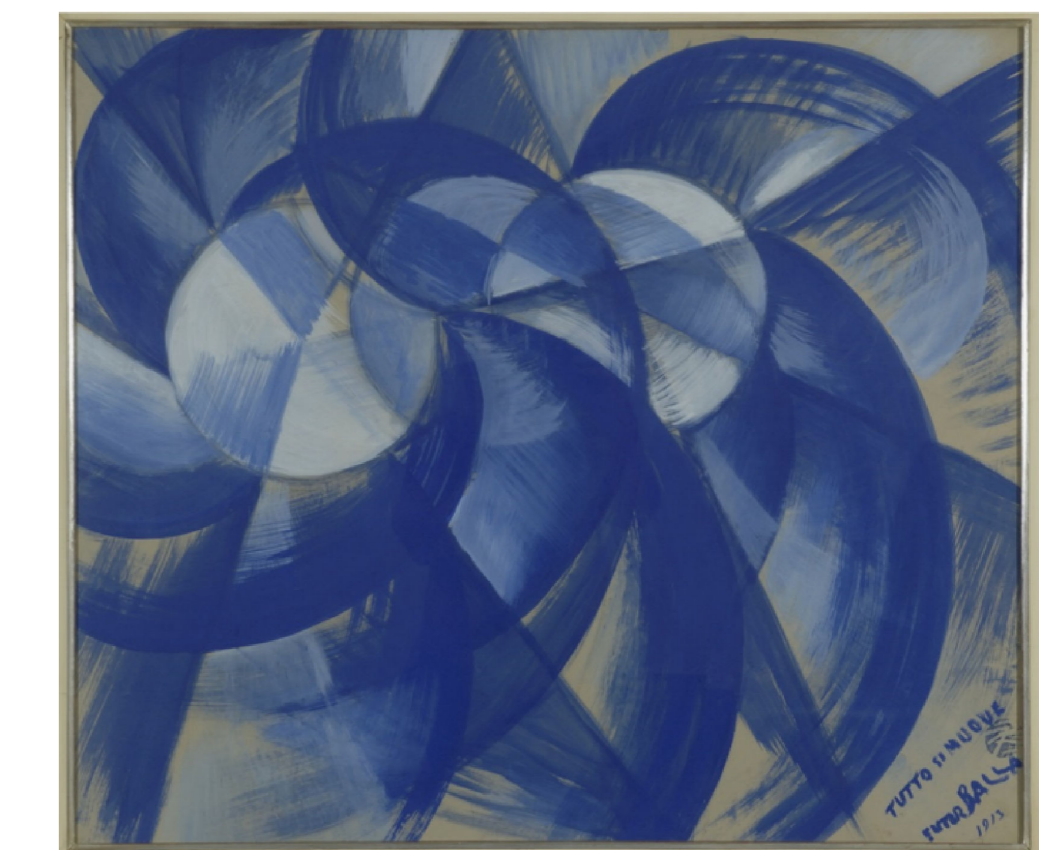
-  Rete viaria
-  Rete ferroviaria

Proiezione Geografica: WGS84 - UTM 32N



AEROPORTO DI MILANO "MALPENSA"
MASTERPLAN 2035

Studio di Impatto Ambientale



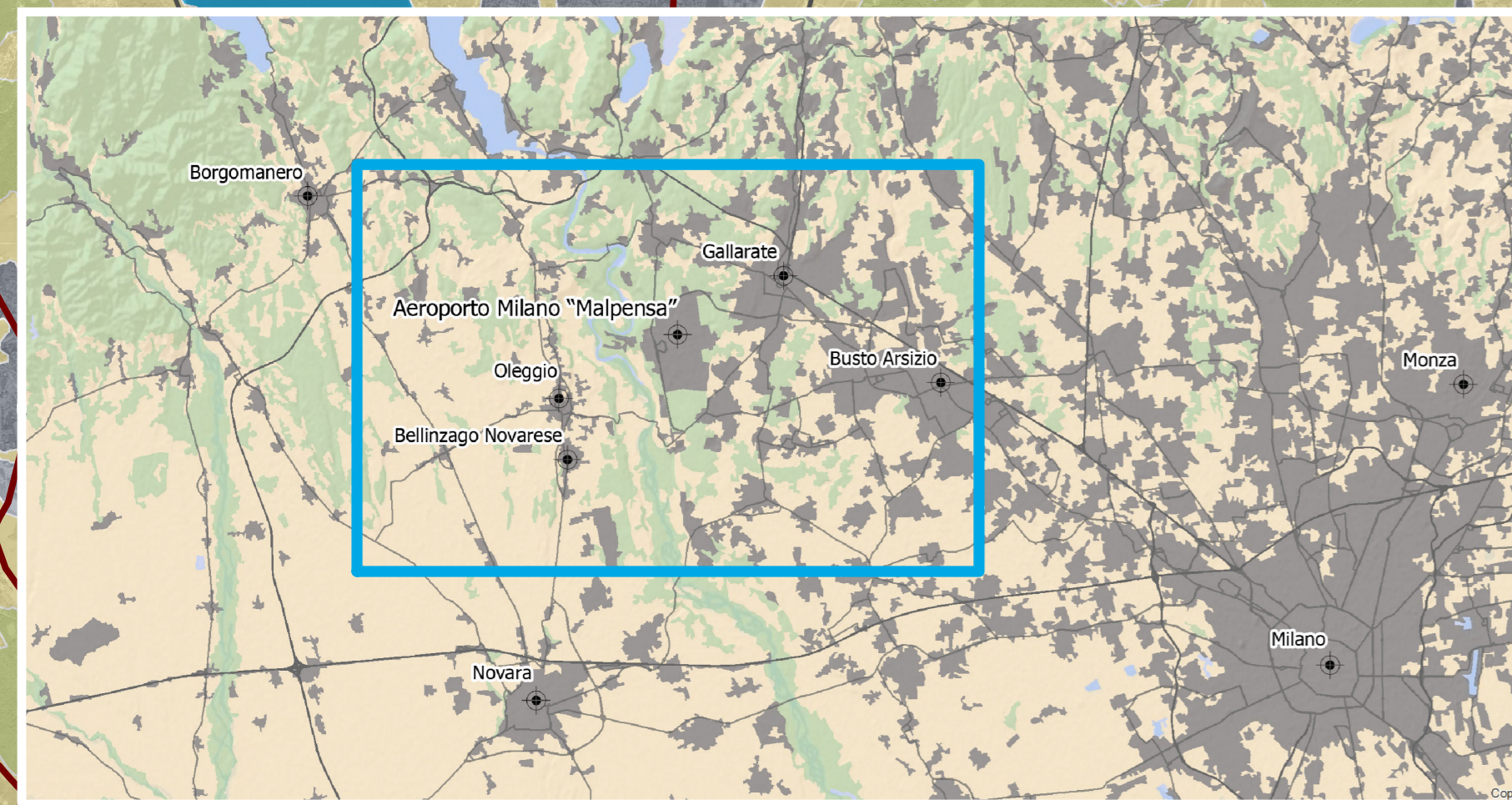
Redazione a cura di:



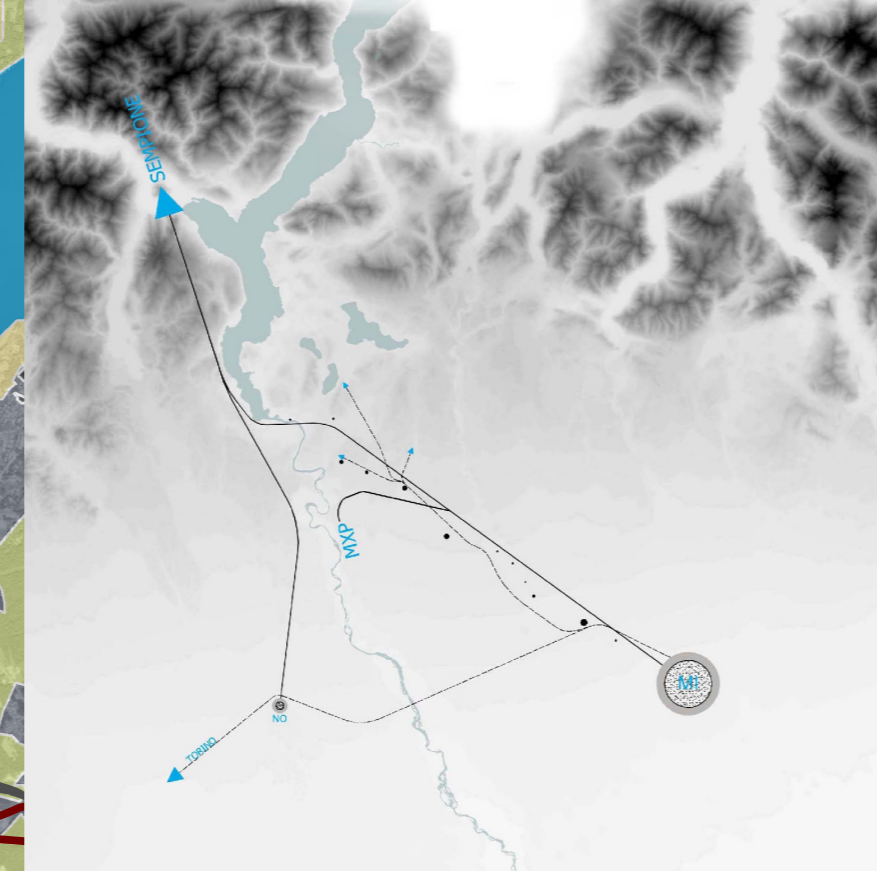
Contesto paesaggistico
Data: Febbraio 2020



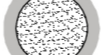

SIA
T.31

Scala: 1:50.000



Elementi strutturanti di matrice storica



-  strade d'Oltralpe
-  ferrovie e direzioni
-  centri urbani maggiori
-  centri urbani minori

Modello interpretativo dei macro-ambiti

