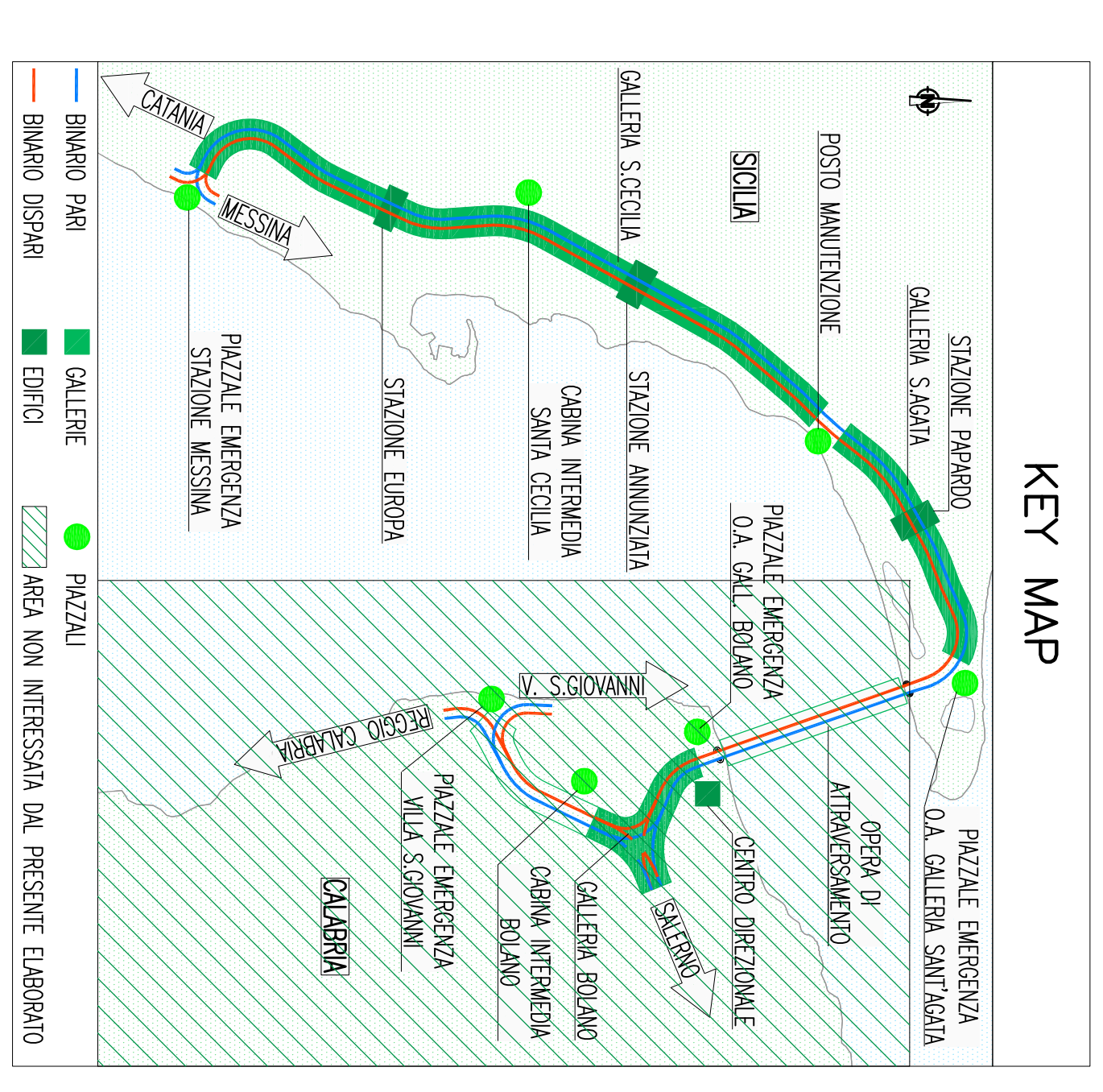
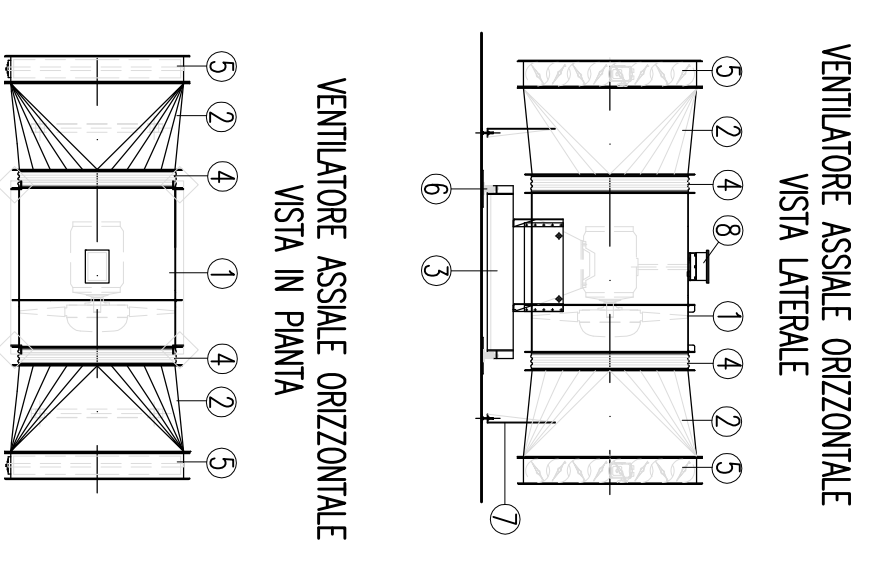


NOTE GENERALI



Simbologia - Tipico Ventilatore



- 1 - Ventilatore Assieme
2 - Gruppo motore/retroscelto
3 - Isolamento acustico
4 - Quadro antivibrante
5 - Serratura di intercezione motorizzazione
6 - Serratura di intercezione
7 - Sostegno raccordo gruppo/retroscelto
8 - Cassette Aluminizzate Motorie

Nota Generale: Le caratteristiche dei materiali e delle apparecchiature sono illustrate nel documento 000709H00000000000000003 - "Schede Tecniche Impianti Tecnologici Stazioni Metropolitan".

Stretto di Messina logo and project title: PONTE SULLO STRETTO DI MESSINA. Includes the name of the contractor, EUROINK S.p.A., and the project location.

Project details including the contractor name (EUROINK S.p.A.), project manager (Fabrizio S. Cacciari), and the specific project name: COLLEGAMENTI SICILIA STAZIONI - IMPIANTI STAZIONE PAPAARDO.

Technical drawing information including the drawing title (STO499\_F01) and a grid of alphanumeric characters for identification.

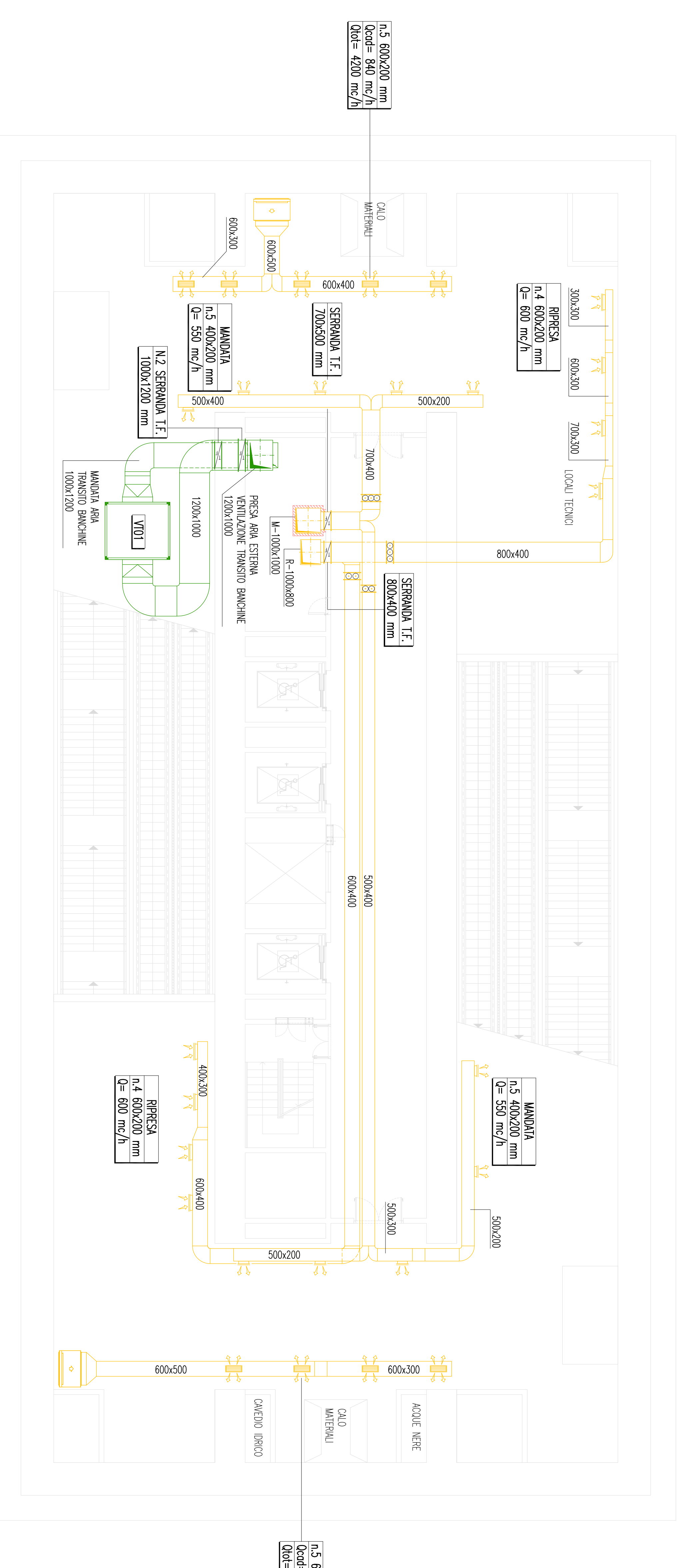


Table titled 'Simbologia' listing various symbols and their corresponding technical specifications for different types of fans and components.

Table titled 'Simbologia' providing further technical specifications for various fan models and their operational parameters.

Table titled 'Simbologia' detailing the characteristics and performance metrics of different fan models.

Table titled 'Simbologia' describing the features and applications of specific fan types.

Table titled 'Valvole e Tirazoni' listing the specifications and functions of various valves and dampers used in the system.