

PROGETTO DEFINITIVO PER LA REALIZZAZIONE DI UN PARCO EOLICO NEI TERRITORI DEI COMUNI DI TROIA, UCERA E BICCARI (FG) IN LOCALITA' "MONTARATRO"

NUOVA STAZIONE TERNA DI SMISTAMENTO A 150 KV AD AMPLIAMENTO DELLA STAZIONE 380/150 KV DI TROIA (FG)



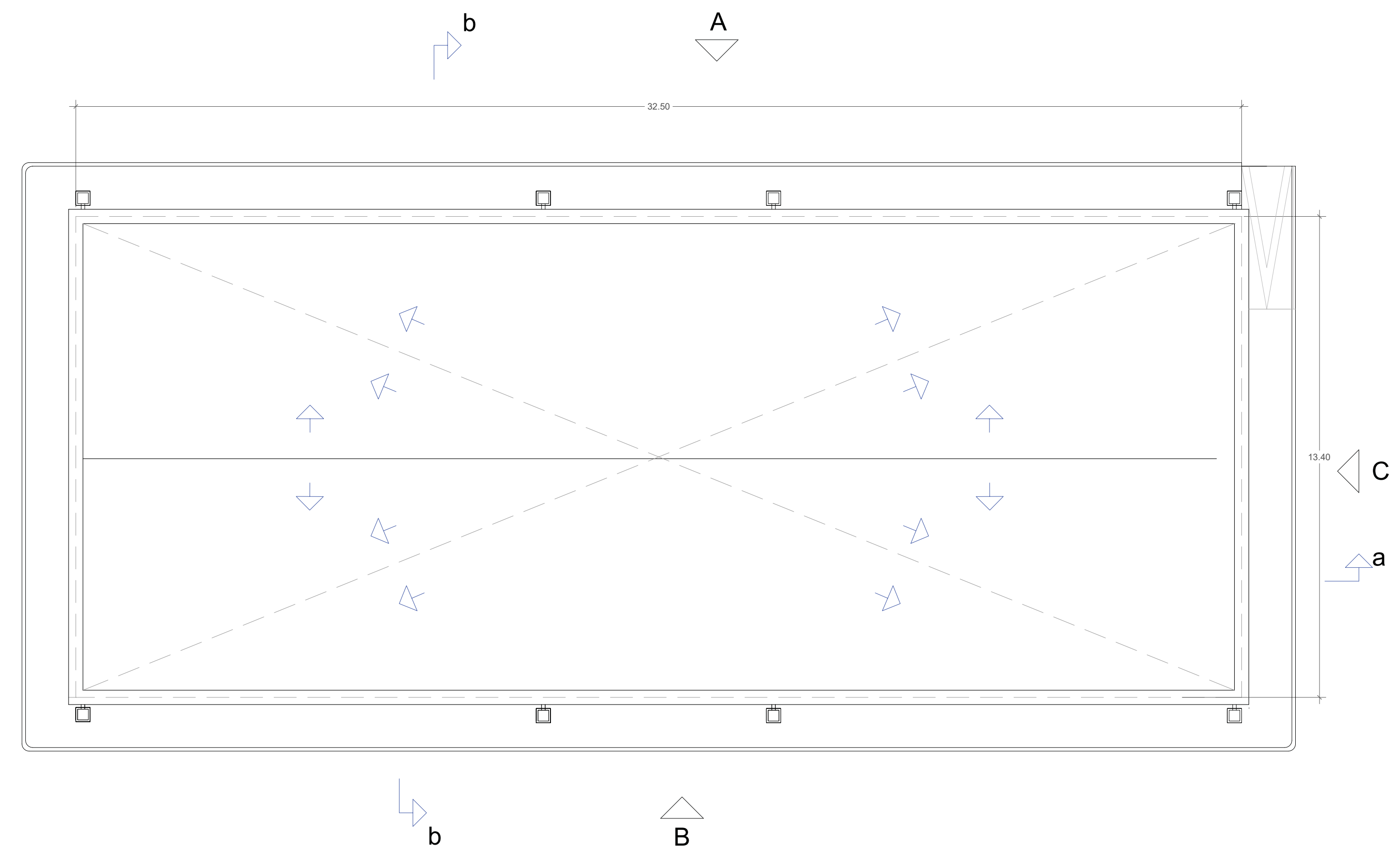
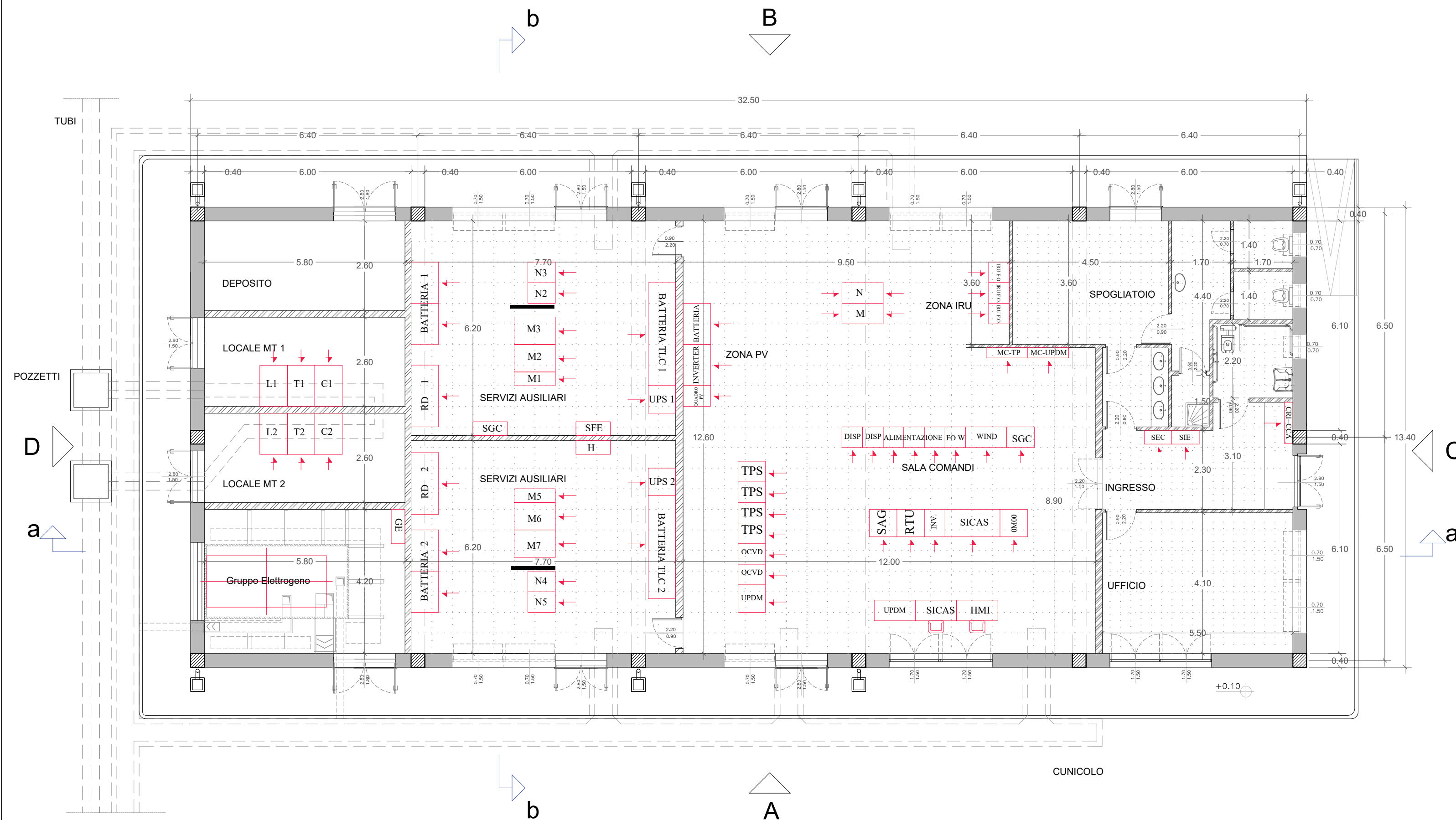
Tecnico
ing. Danilo POMPONIO

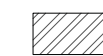
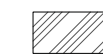

Collaborazioni
ing. Milena MIGLIONICO
ing. Antonio CRISAFULLI
ing. Giulia CARELLA
ing. Tommaso MANCINI
ing. Mariano MARSEGLIA
ing. Giuseppe Federico ZINGARELLI
geom. Claudio A. ZINGARELLI

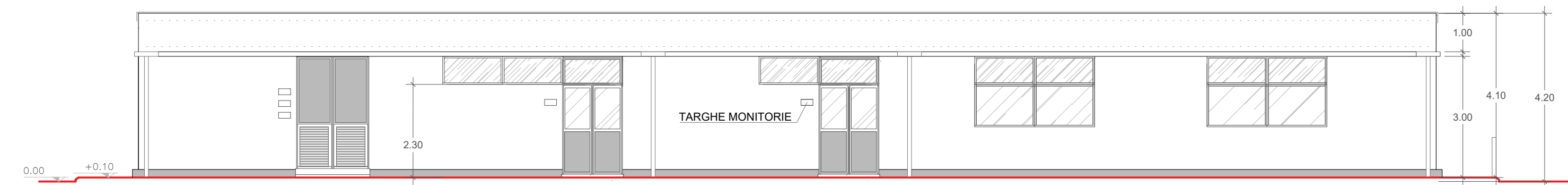
Responsabile commessa
ing. Danilo POMPONIO



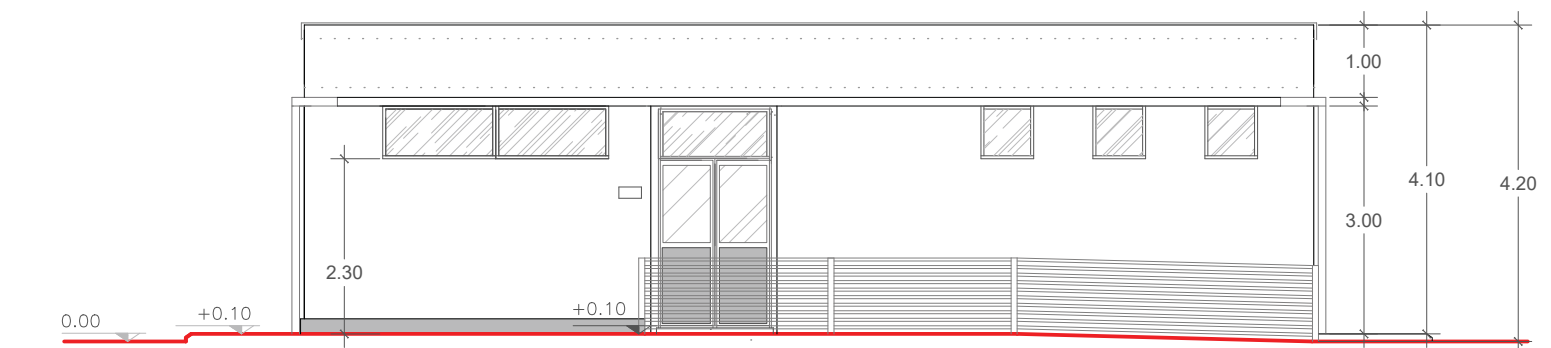
TAVOLA	TITOLO	COMMESSA	TIPOLOGIA
R06	PIANTA, PROSPETTI E SEZIONI DELL'EDIFICIO SERVIZI AUSILIARI, COMANDO E CONTROLLO TERNA	20063	D
REVISIONE		CODICE ELABORATO	
00		DW20063D-R06	
FOGLIO		SOSTITUISCE	SOSTITUITO DA
1/1			
REV	DATA	MODIFICA	
00	13/06/2020	Emissione	
01			
02			
03			
04			
05			



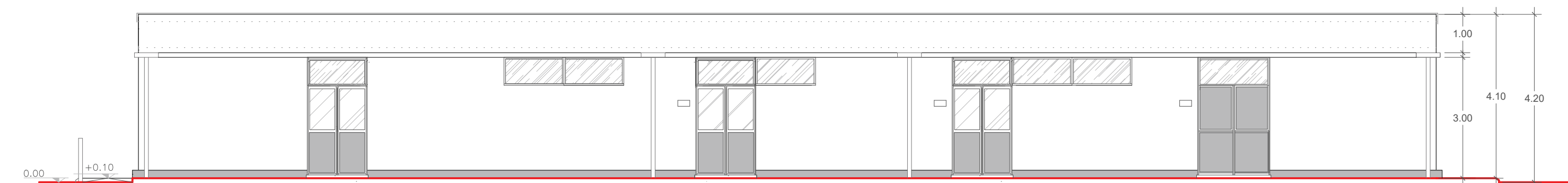
-  Muri REI 120
-  Tramezzi in calcestruzzo cellulare
-  Pannellature perimetrali



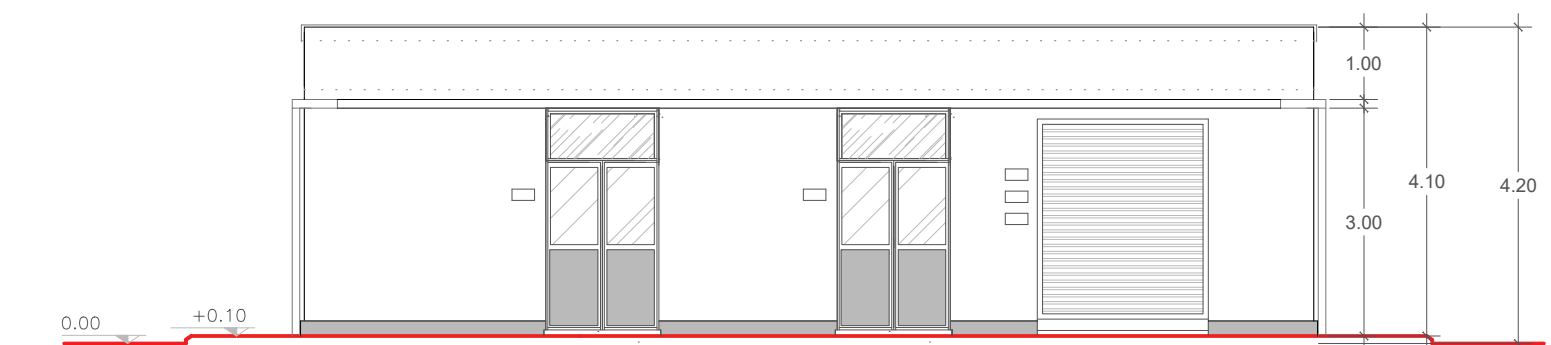
Prospetto A



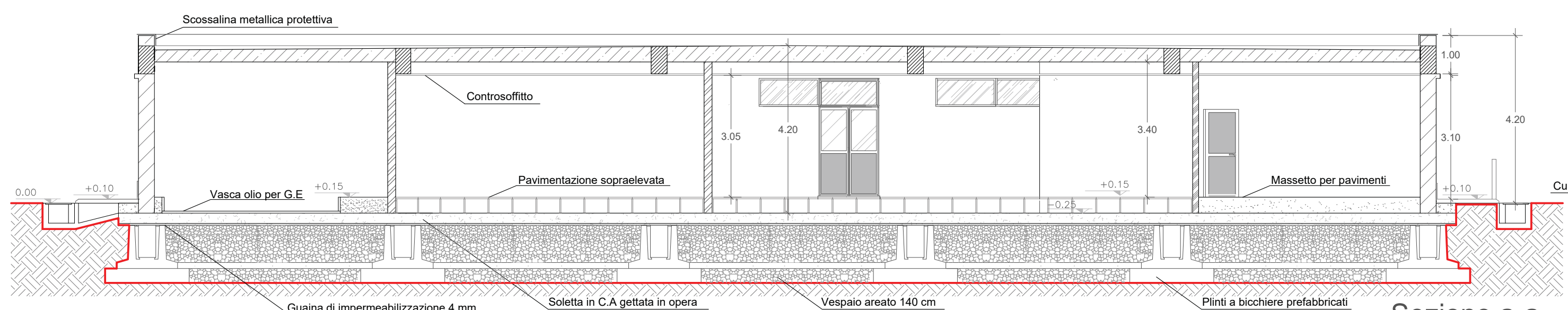
Prospetto C



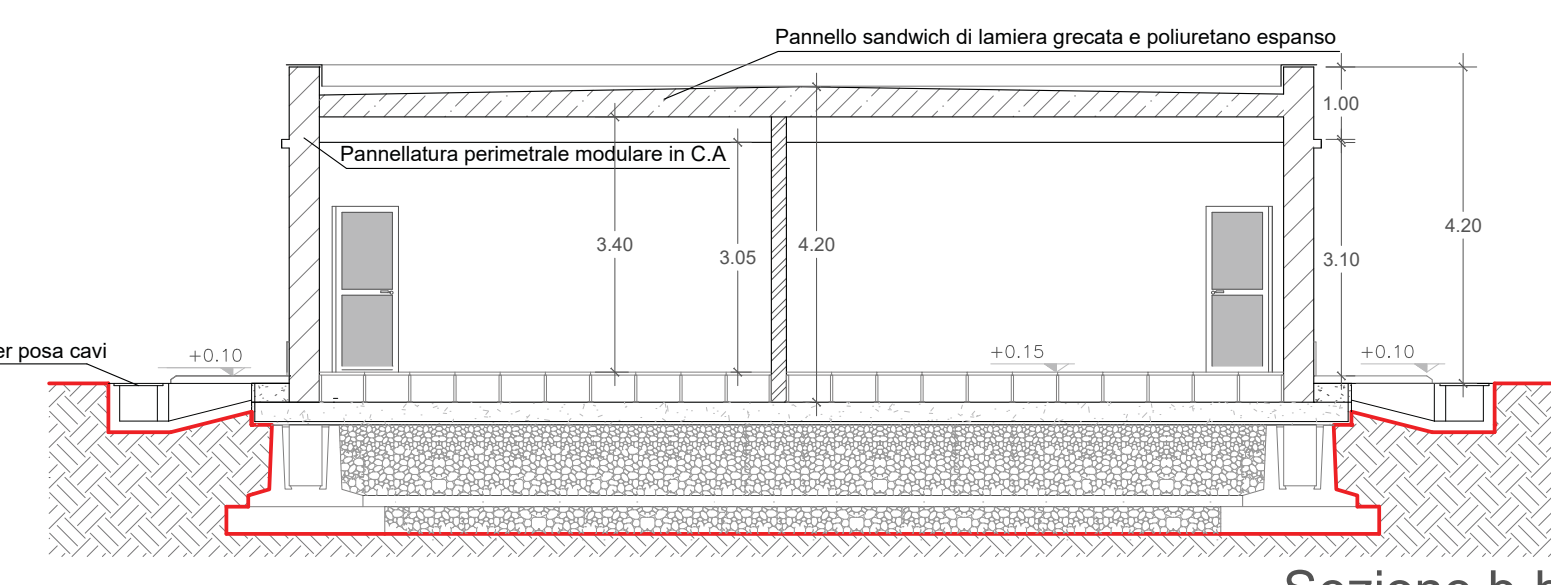
Prospetto B



Prospetto D



Sezione a-a



Sezione b-b