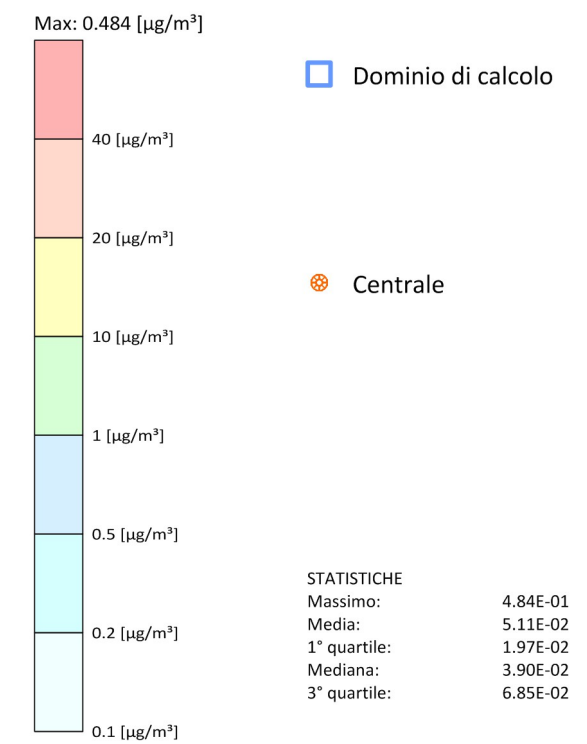


Tavola AV-01.u
 Scenario "upgrade"
 (area vasta)

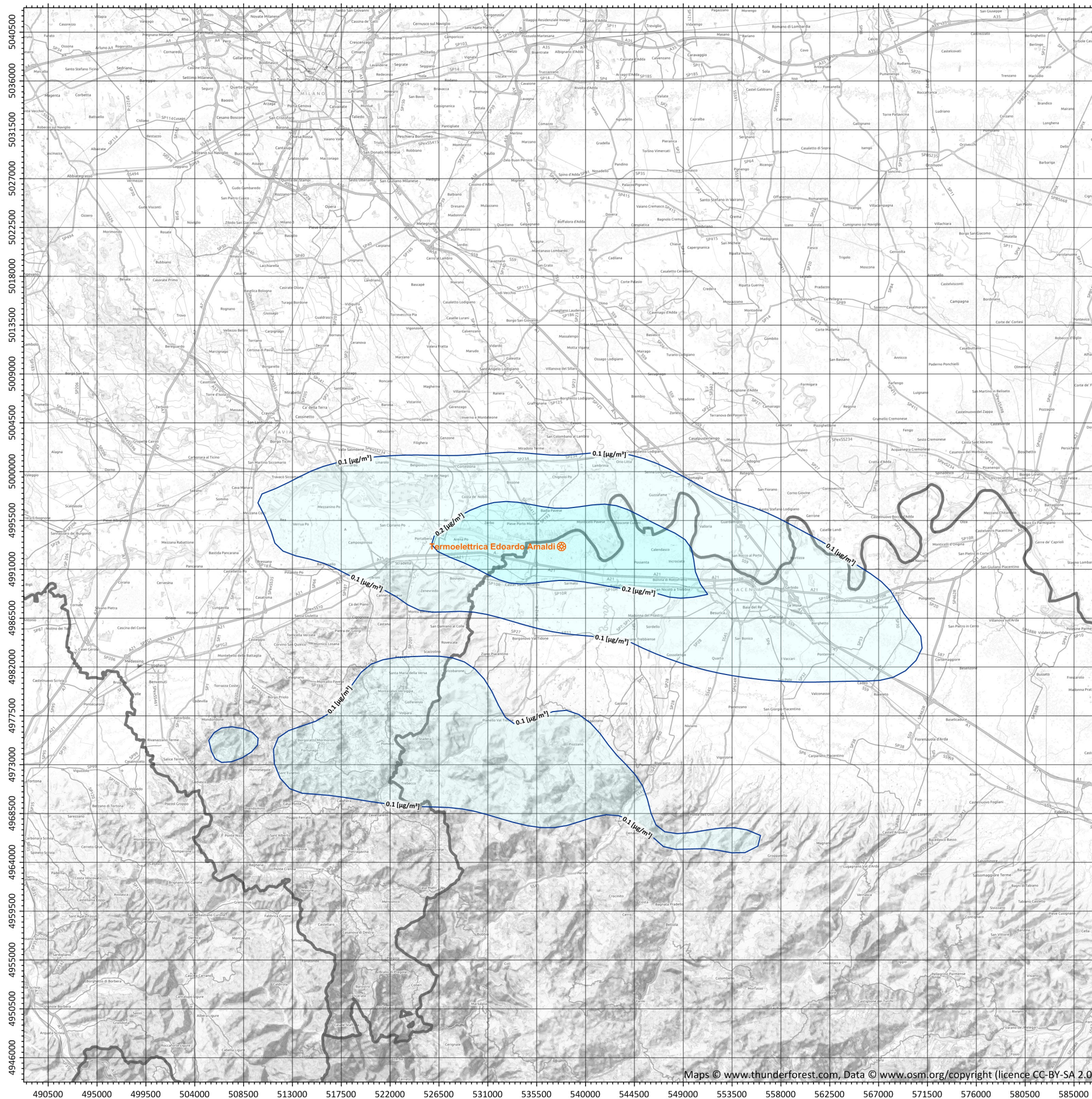
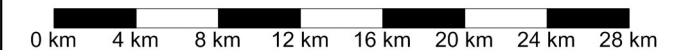
**Ricadute delle emissioni
 convogliate ai camini**

NO₂ - Concentrazione media annua [$\mu\text{g}/\text{m}^3$]

Valore Limite (D.Lgs. 155/2010): 40 [$\mu\text{g}/\text{m}^3$]



System of Reference
 ETRS89 / UTM zona 32N



Periodo meteorologico 2013-2015

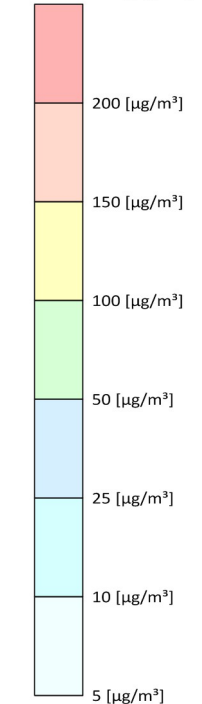


Tavola AV-02.u
 Scenario "upgrade"
 (area vasta)

**Ricadute delle emissioni
 convogliate ai camini**

**NO₂ - Concentrazione oraria
 superata 18 volte per anno civile [µg/m³]**
 Valore Limite (D.Lgs. 155/2010): 200 [µg/m³]

Max: 26.1 [µg/m³]



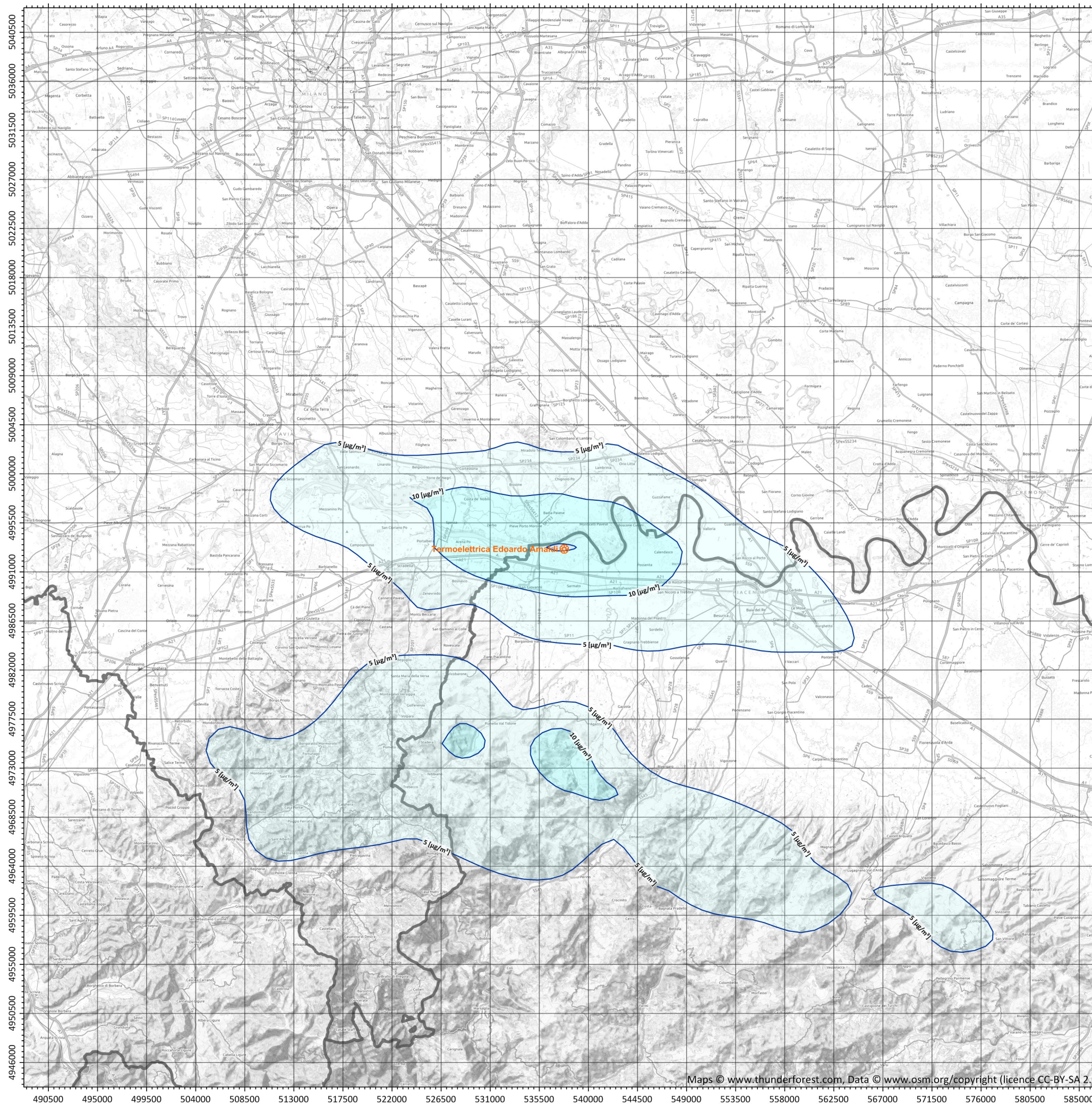
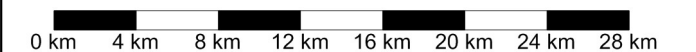
Dominio di calcolo

Centrale

STATISTICHE

Massimo:	2.61E+01
Media:	2.88E+00
1° quartile:	1.17E+00
Mediana:	2.17E+00
3° quartile:	3.61E+00

Sistema di Riferimento
 ETRS89 / UTM zona 32N



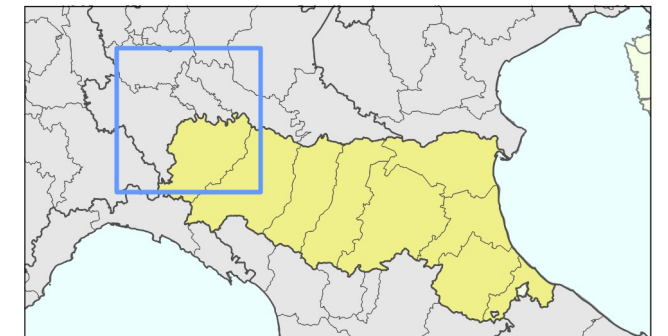


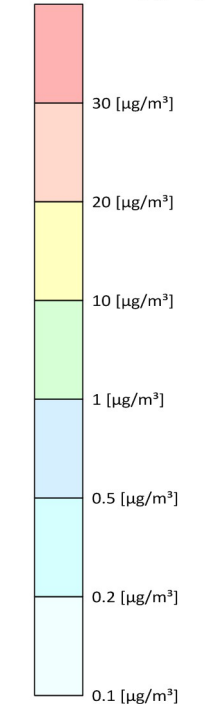
Tavola AV-03.u
 Scenario "upgrade"
 (area vasta)

**Ricadute delle emissioni
 convogliate ai camini**

NO_x - Concentrazione media annua [$\mu\text{g}/\text{m}^3$]
 (protezione della vegetazione)

Livello Critico (D.Lgs. 155/2010): 30 [$\mu\text{g}/\text{m}^3$]

Max: 0.659 [$\mu\text{g}/\text{m}^3$]



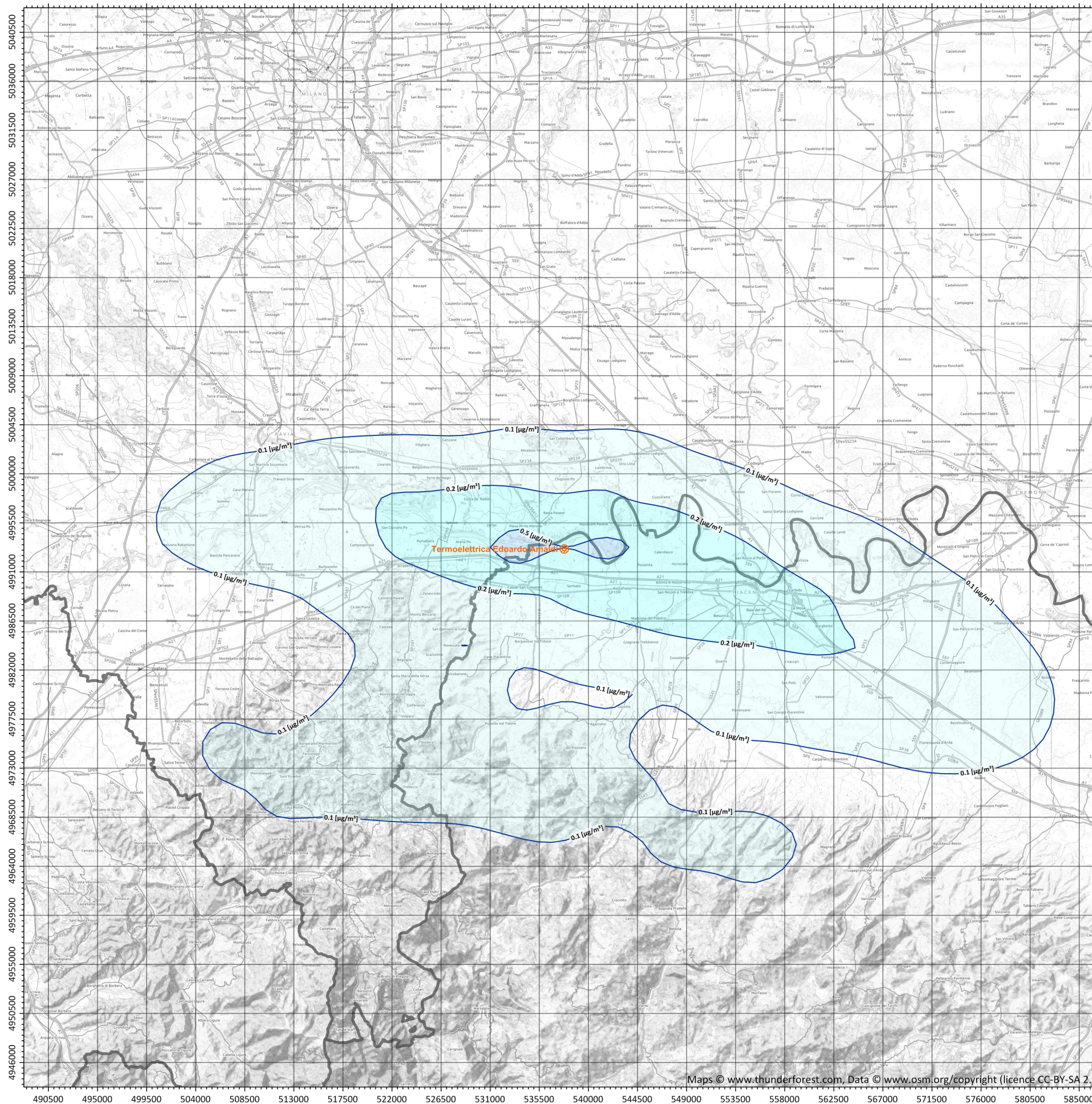
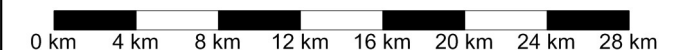
Dominio di calcolo

Centrale

STATISTICHE

Massimo:	6.59E-01
Media:	6.56E-02
1° quartile:	2.31E-02
Mediana:	4.67E-02
3° quartile:	8.81E-02

Sistema di Riferimento
 ETRS89 / UTM zona 32N



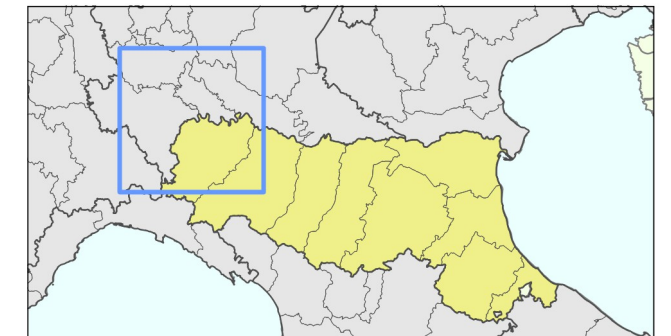


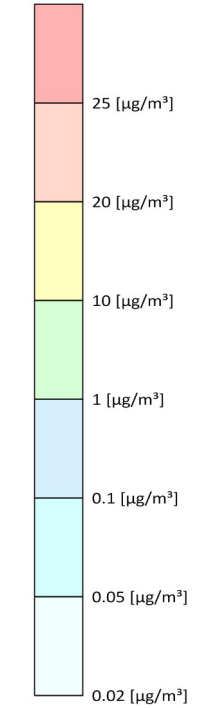
Tavola AV-04.u
 Scenario "upgrade"
 (area vasta)

**Ricadute delle emissioni
 convogliate ai camini**

SPM(*) - Concentrazione media annua [$\mu\text{g}/\text{m}^3$]

Limite di legge (D.Lgs. 155/2010):
 40 $\mu\text{g}/\text{m}^3$ (applicabile a PM_{10}) e 25 $\mu\text{g}/\text{m}^3$ (applicabile a $\text{PM}_{2.5}$)

Max: 0.119 [$\mu\text{g}/\text{m}^3$]



Dominio di calcolo

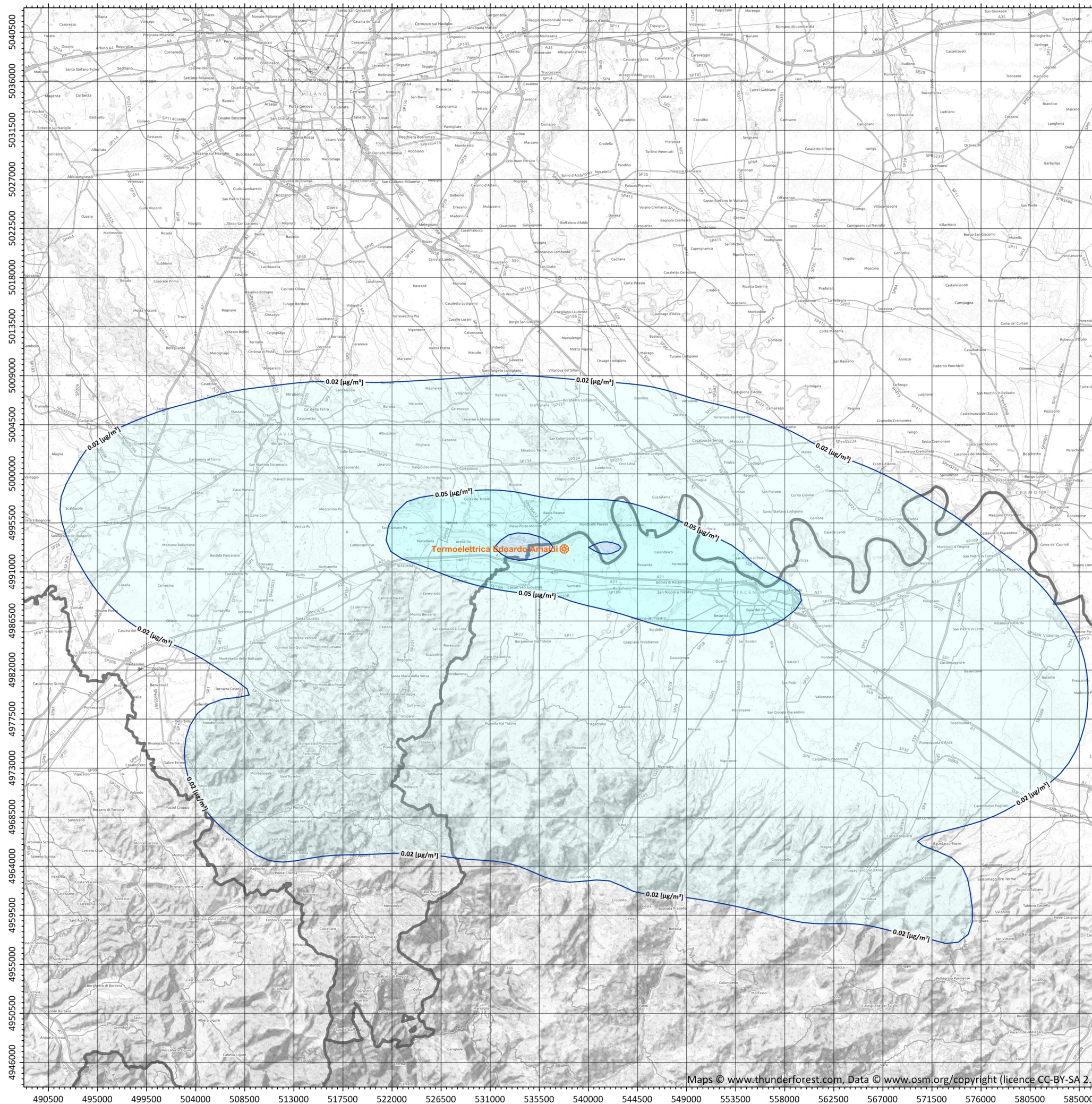
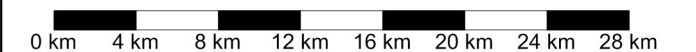
Centrale

STATISTICHE
 Massimo: 1.19E-01
 Media: 1.75E-02
 1° quartile: 7.74E-03
 Mediana: 1.38E-02
 3° quartile: 2.29E-02

(*) Particolato secondario



Sistema di Riferimento
 ETRS89 / UTM zona 32N



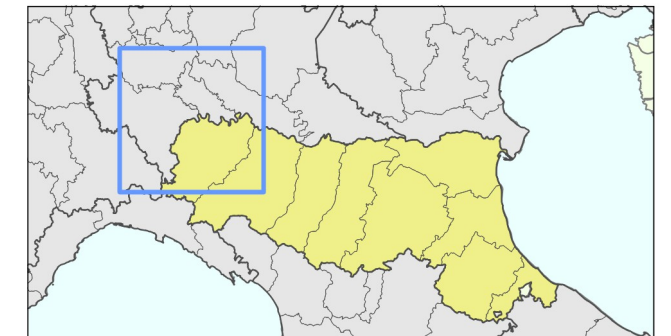
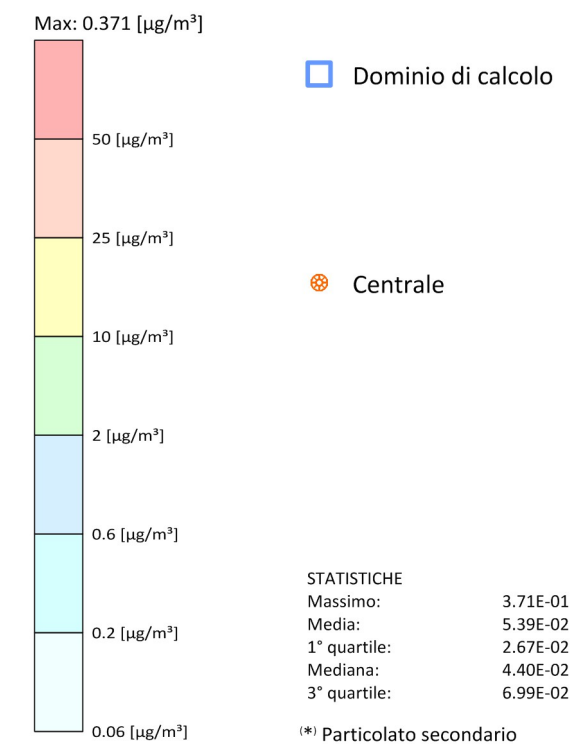


Tavola AV-05.u
 Scenario "upgrade"
 (area vasta)

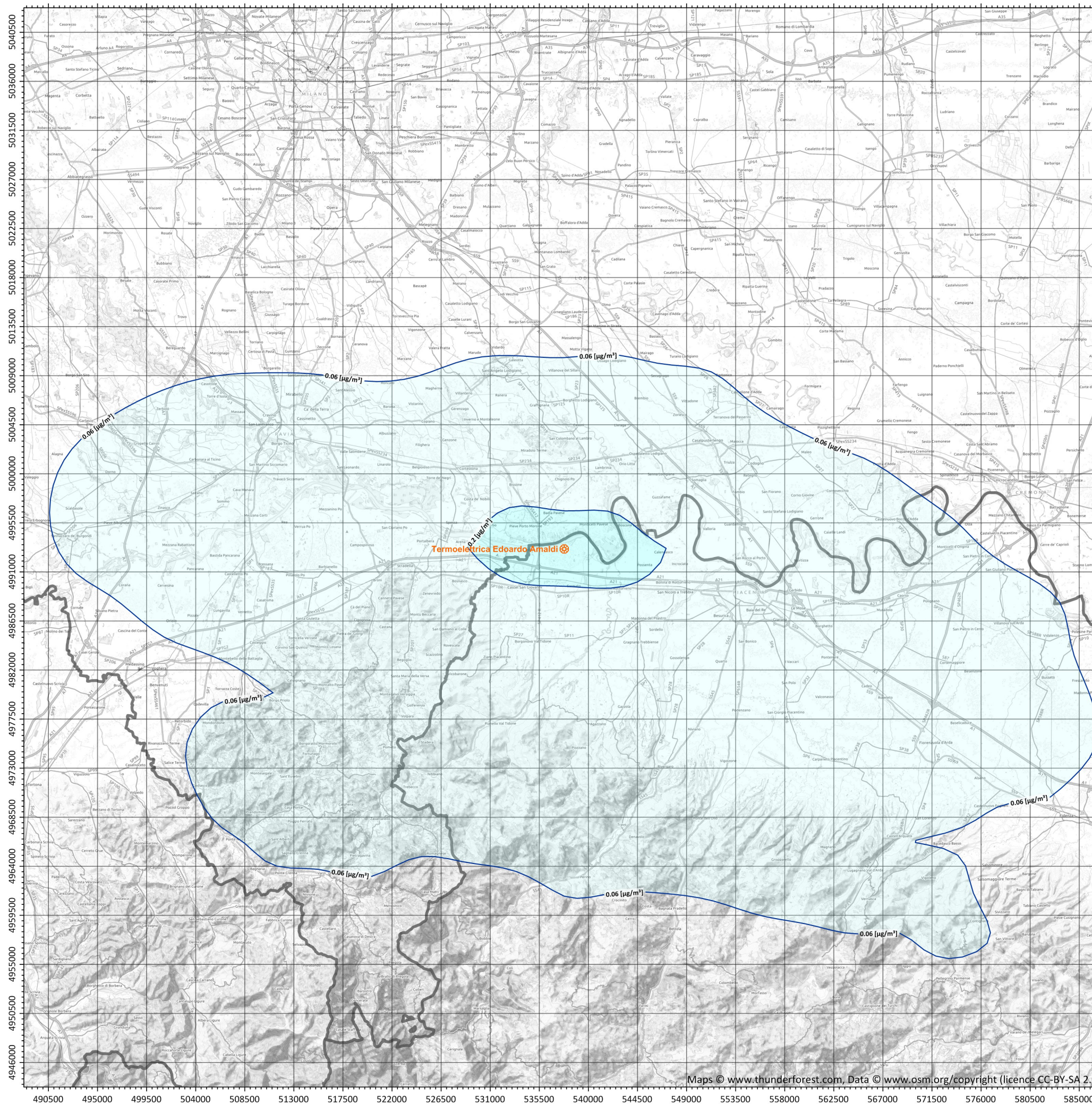
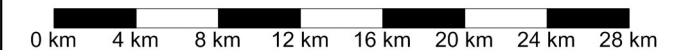
**Ricadute delle emissioni
 convogliate ai camini**

SPM(*) - Concentrazione giornaliera
 superata 35 volte per anno civile [$\mu\text{g}/\text{m}^3$]

Limite di legge (D.Lgs. 155/2010): $50 \mu\text{g}/\text{m}^3$ (applicabile a PM_{10})



System of Reference
 ETRS89 / UTM zona 32N



Periodo meteorologico 2013-2015

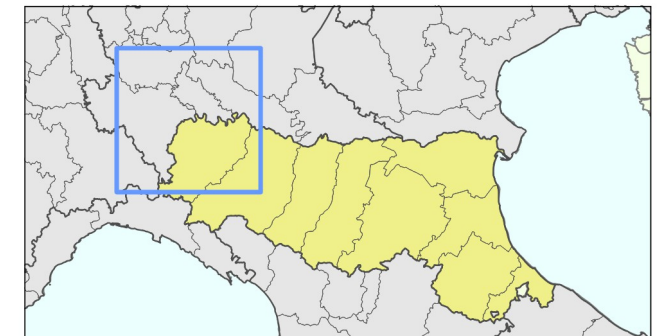
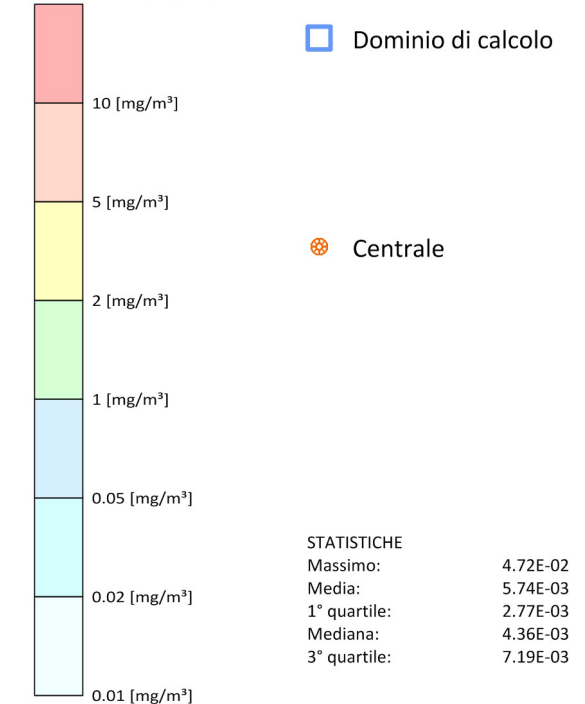


Tavola AV-06.u
 Scenario "upgrade"
 (area vasta)

**Ricadute delle emissioni
 convogliate ai camini**

CO - Concentrazione media massima
 giornaliera calcolata su 8 ore [mg/m³]
 Valore Limite (D.Lgs. 155/2010): 10 [mg/m³]

Max: 0.0472 [mg/m³]



Sistema di Riferimento
 ETRS89 / UTM zona 32N

