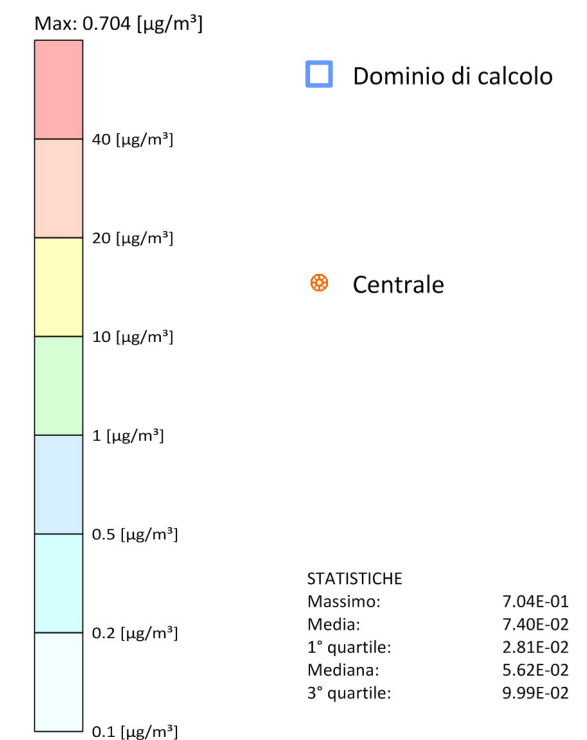


**Tavola AV-01.a**  
 Scenario "autorizzato"  
 (area vasta)

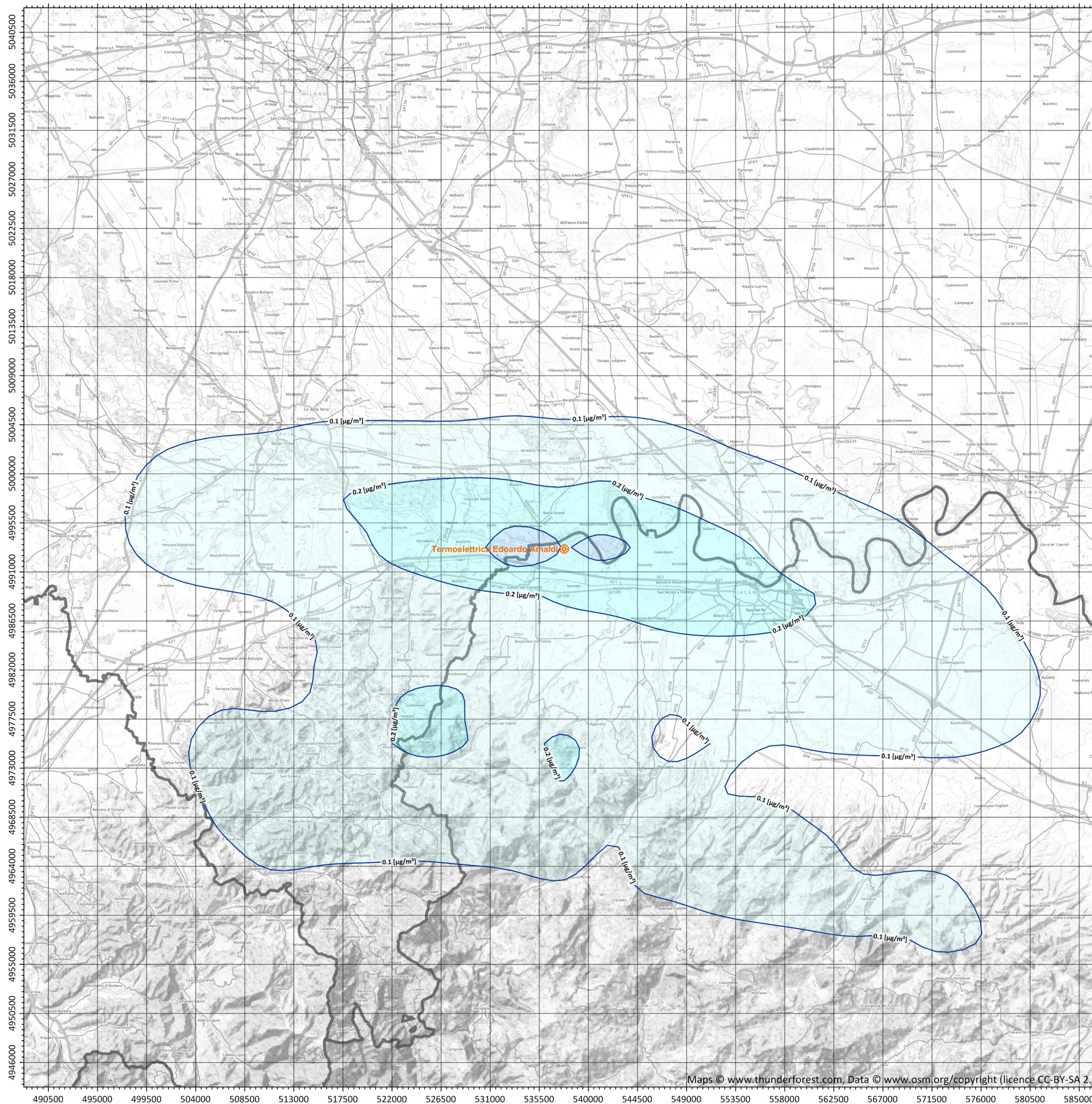
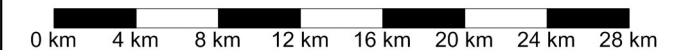
**Ricadute delle emissioni  
 convogliate ai camini**

NO<sub>2</sub> - Concentrazione media annua [ $\mu\text{g}/\text{m}^3$ ]

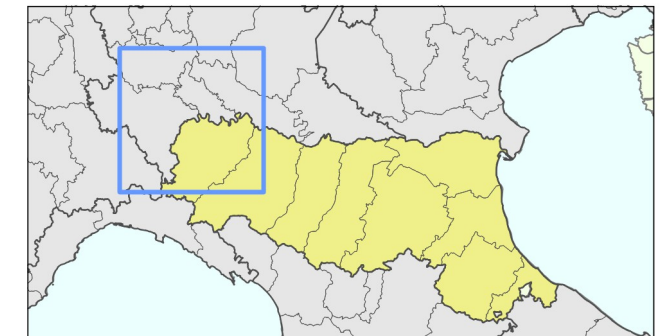
Valore Limite (D.Lgs. 155/2010): 40 [ $\mu\text{g}/\text{m}^3$ ]



Sistema di Riferimento  
 ETRS89 / UTM zona 32N



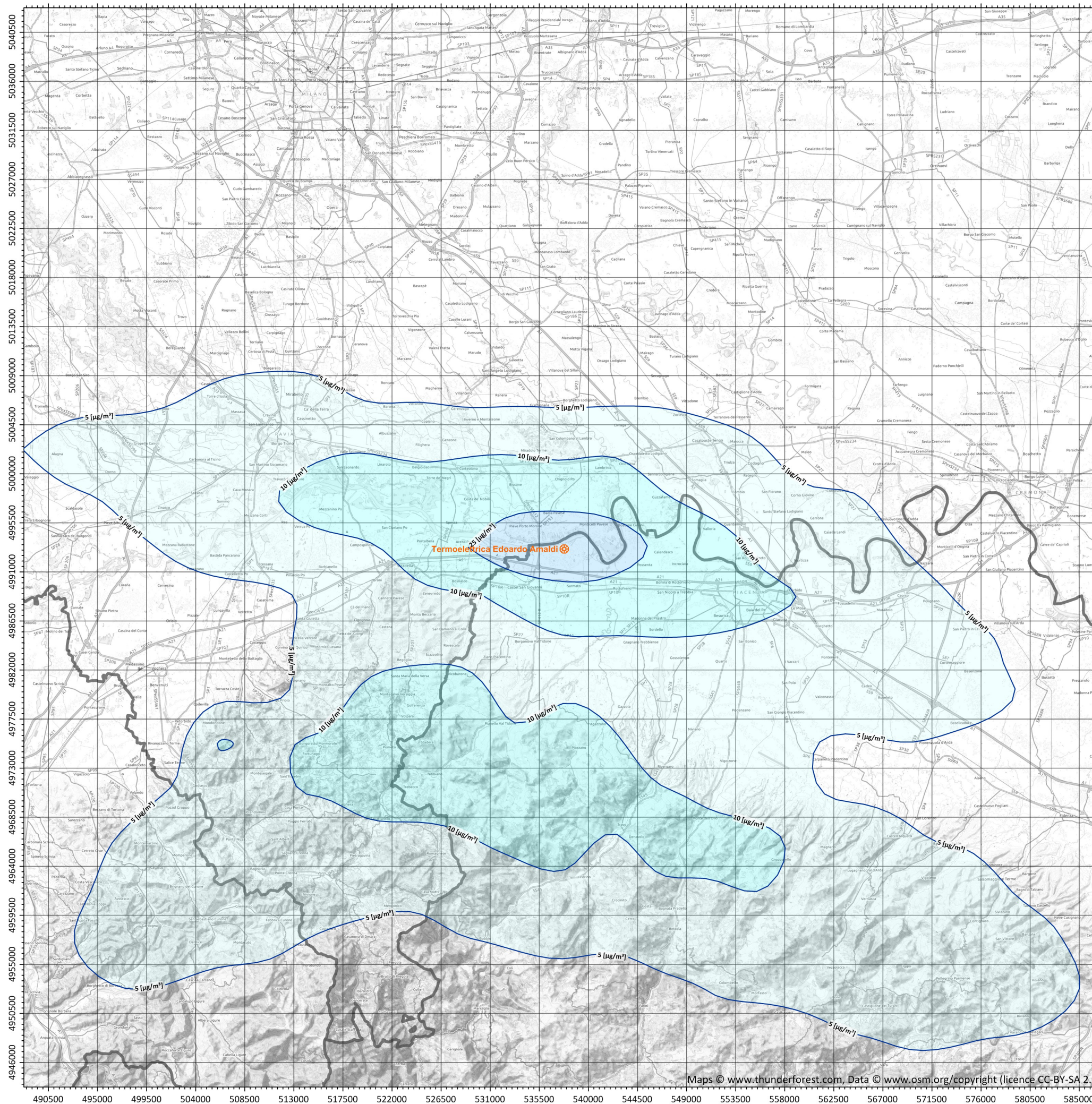
Periodo meteorologico 2013-2015



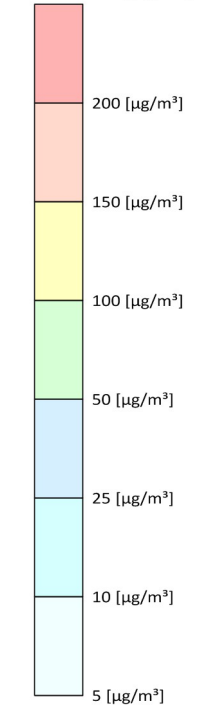
**Tavola AV-02.a**  
 Scenario "autorizzato"  
 (area vasta)

**Ricadute delle emissioni  
 convogliate ai camini**

NO<sub>2</sub> - Concentrazione oraria  
 superata 18 volte per anno civile [µg/m<sup>3</sup>]  
 Valore Limite (D.Lgs. 155/2010): 200 [µg/m<sup>3</sup>]



Max: 44.1 [µg/m<sup>3</sup>]

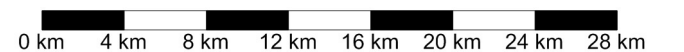


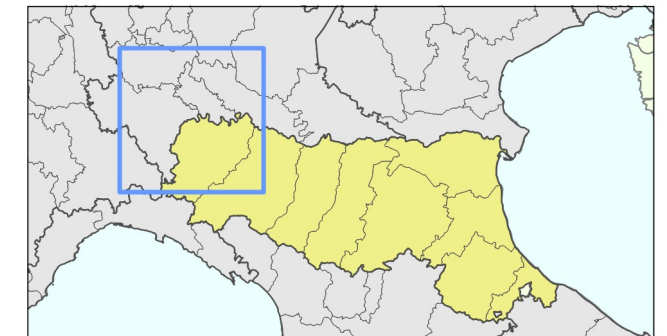
□ Dominio di calcolo

⊛ Centrale

STATISTICHE	
Massimo:	4.41E+01
Media:	4.90E+00
1° quartile:	1.98E+00
Mediana:	3.77E+00
3° quartile:	6.19E+00

Systema di Riferimento  
 ETRS89 / UTM zona 32N





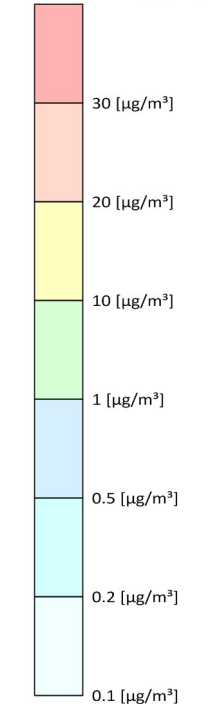
**Tavola AV-03.a**  
 Scenario "autorizzato"  
 (area vasta)

**Ricadute delle emissioni  
 convogliate ai camini**

NO<sub>x</sub> - Concentrazione media annua [ $\mu\text{g}/\text{m}^3$ ]  
 (protezione della vegetazione)

Livello Critico (D.Lgs. 155/2010): 30 [ $\mu\text{g}/\text{m}^3$ ]

Max: 0.959 [ $\mu\text{g}/\text{m}^3$ ]



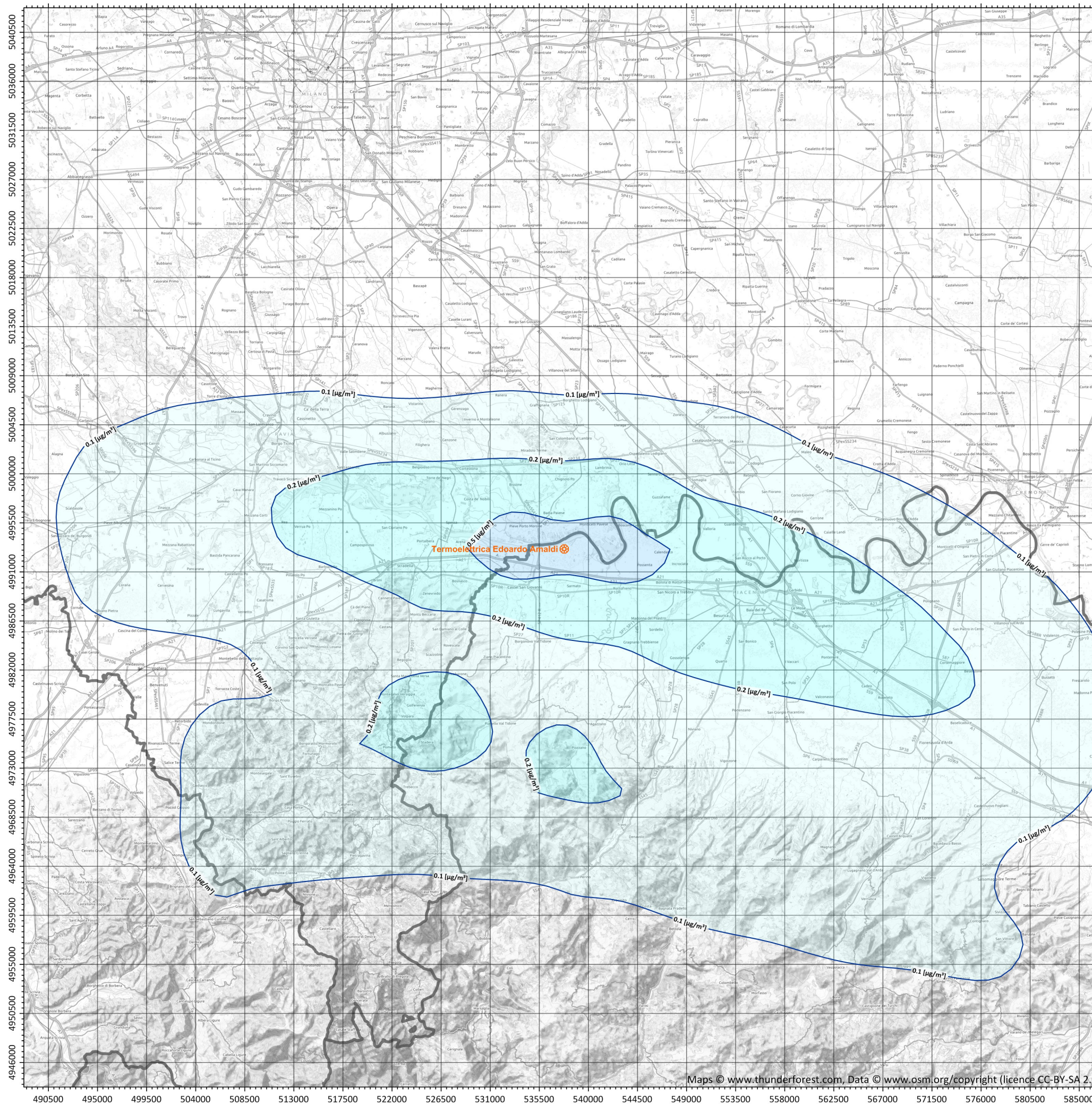
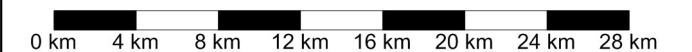
Dominio di calcolo

Centrale

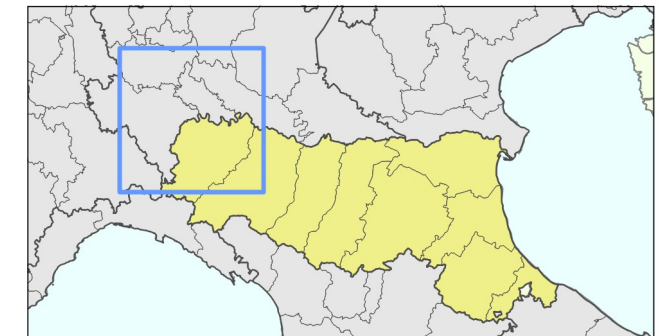
STATISTICHE

Massimo:	9.59E-01
Media:	9.50E-02
1° quartile:	3.33E-02
Mediana:	6.76E-02
3° quartile:	1.27E-01

Sistema di Riferimento  
 ETRS89 / UTM zona 32N



Periodo meteorologico 2013-2015



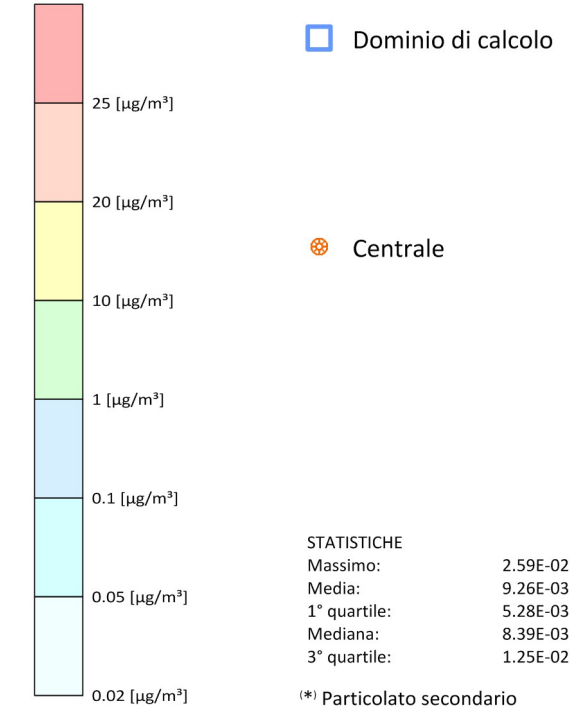
**Tavola AV-04.a**  
 Scenario "autorizzato"  
 (area vasta)

**Ricadute delle emissioni  
 convogliate ai camini**

SPM(\*) - Concentrazione media annua [ $\mu\text{g}/\text{m}^3$ ]

Limite di legge (D.Lgs. 155/2010):  
 40  $\mu\text{g}/\text{m}^3$  (applicabile a  $\text{PM}_{10}$ ) e 25  $\mu\text{g}/\text{m}^3$  (applicabile a  $\text{PM}_{2.5}$ )

Max: 0.0259 [ $\mu\text{g}/\text{m}^3$ ]

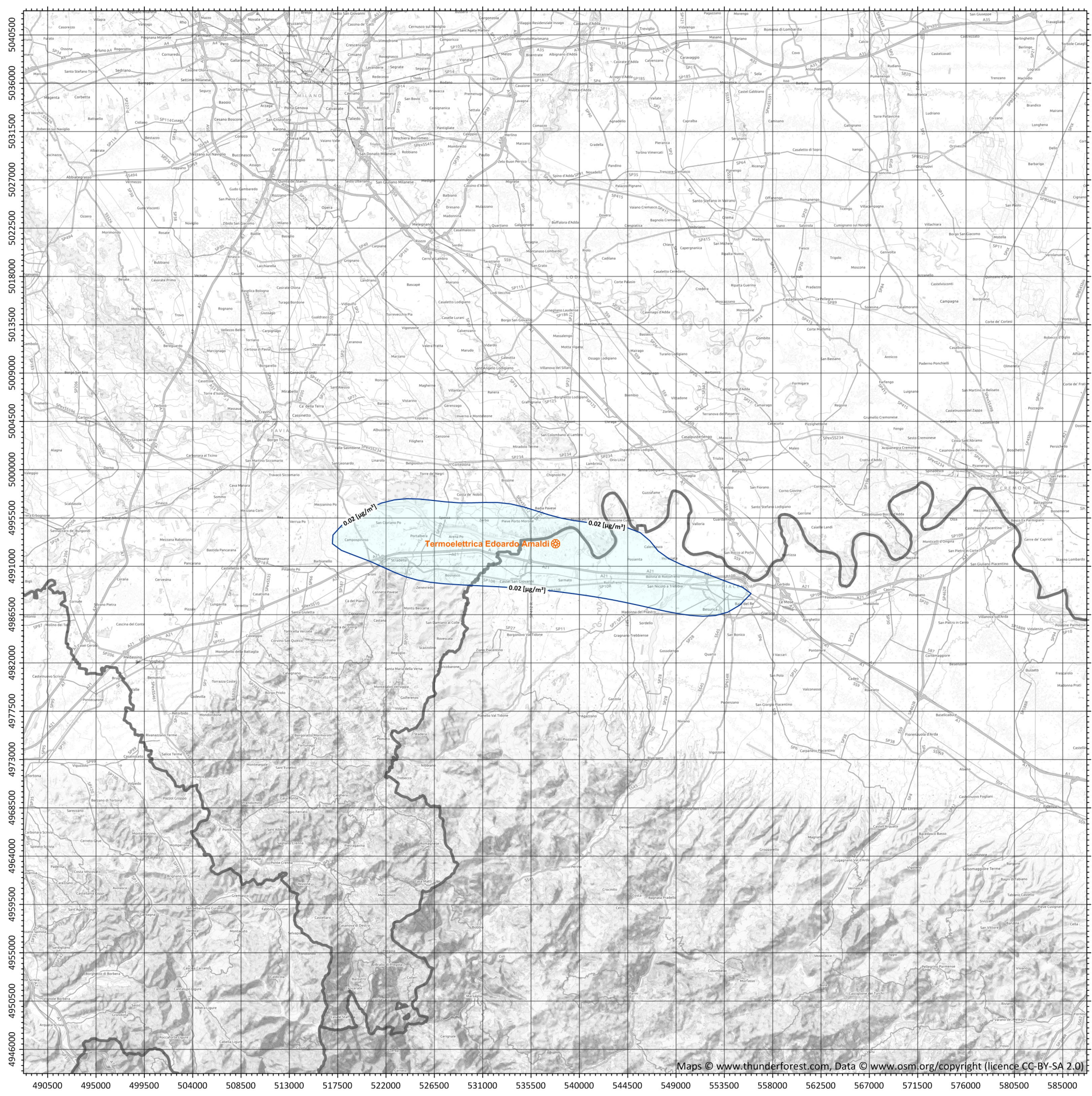
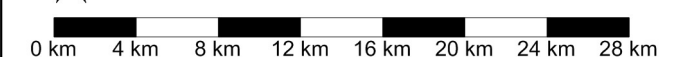


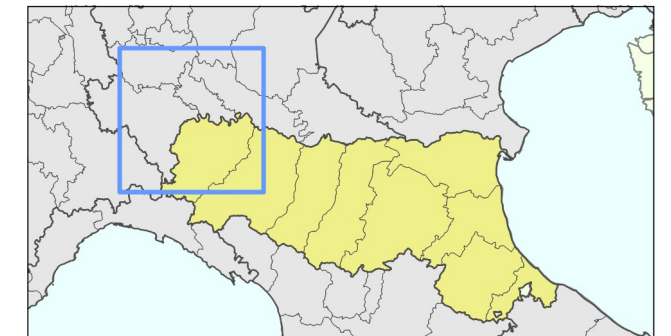
STATISTICHE

Massimo:	2.59E-02
Media:	9.26E-03
1° quartile:	5.28E-03
Mediana:	8.39E-03
3° quartile:	1.25E-02

(\*) Particolato secondario

Systema di Riferimento  
 ETRS89 / UTM zona 32N





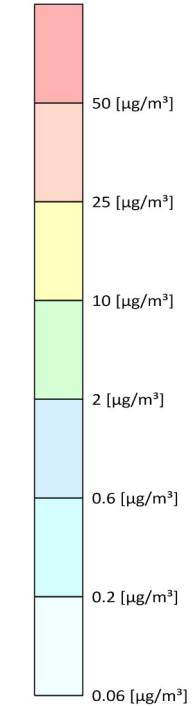
**Tavola AV-05.a**  
 Scenario "autorizzato"  
 (area vasta)

**Ricadute delle emissioni  
 convogliate ai camini**

SPM(\*) - Concentrazione giornaliera  
 superata 35 volte per anno civile [ $\mu\text{g}/\text{m}^3$ ]

Limite di legge (D.Lgs. 155/2010): 50  $\mu\text{g}/\text{m}^3$  (applicabile a PM<sub>10</sub>)

Max: 0.0793 [ $\mu\text{g}/\text{m}^3$ ]



Dominio di calcolo

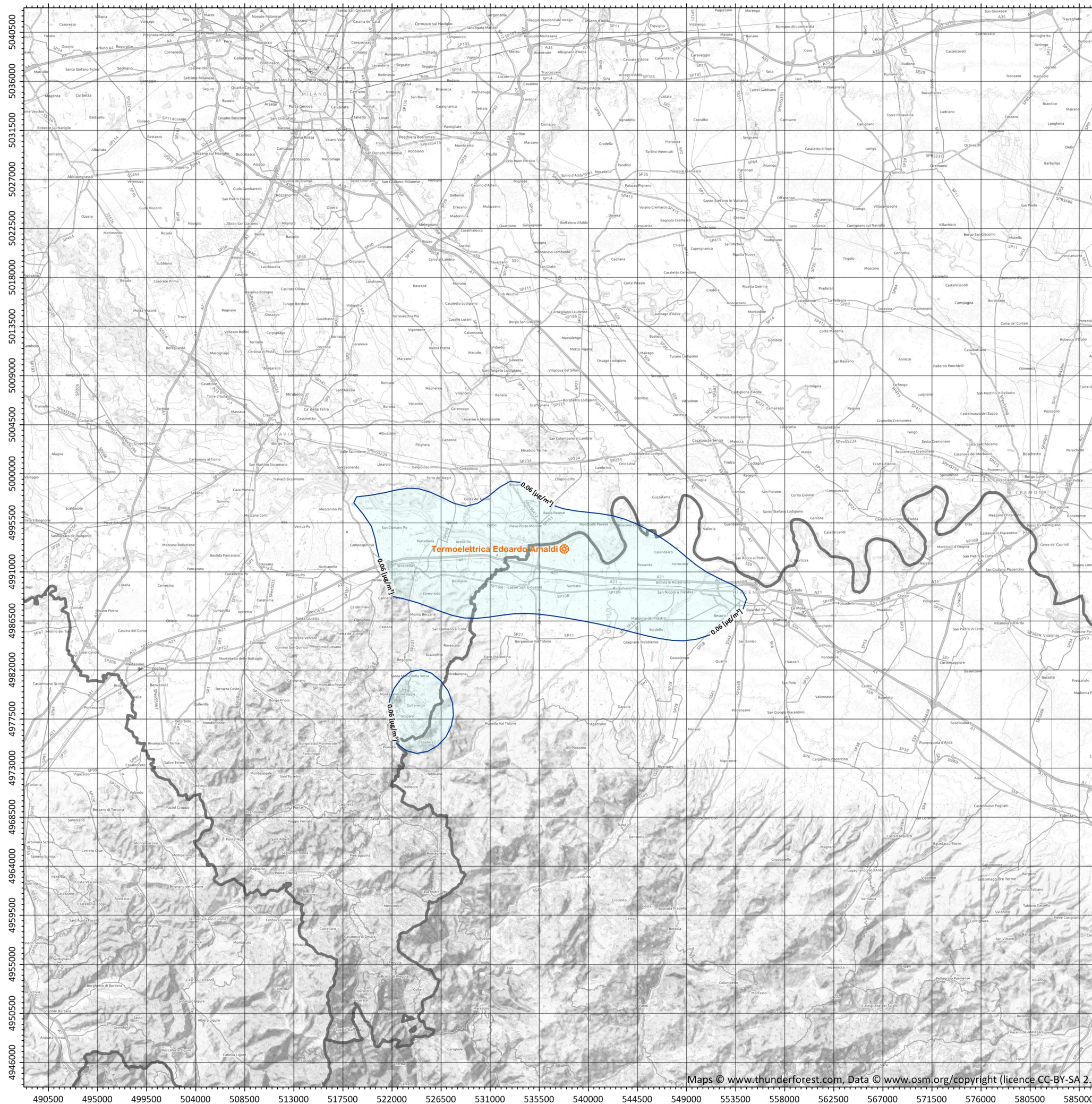
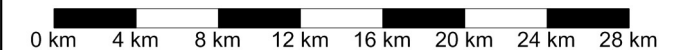
Centrale

STATISTICHE  
 Massimo: 7.93E-02  
 Media: 3.10E-02  
 1° quartile: 1.96E-02  
 Mediana: 2.84E-02  
 3° quartile: 4.08E-02

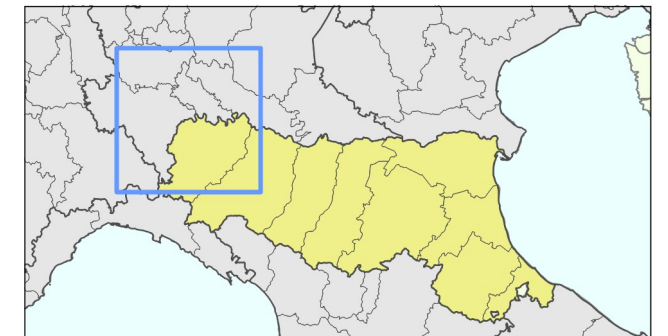
(\*) Particolato secondario



Sistema di Riferimento  
 ETRS89 / UTM zona 32N



Periodo meteorologico 2013-2015

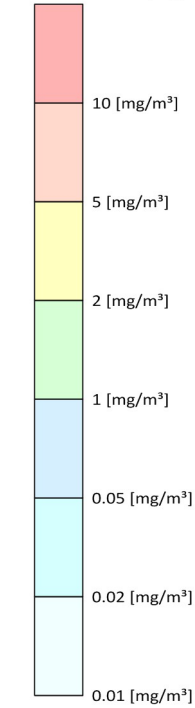


**Tavola AV-06.a**  
 Scenario "autorizzato"  
 (area vasta)

**Ricadute delle emissioni  
 convogliate ai camini**

CO - Concentrazione media massima  
 giornaliera calcolata su 8 ore [mg/m<sup>3</sup>]  
 Valore Limite (D.Lgs. 155/2010): 10 [mg/m<sup>3</sup>]

Max: 0.0436 [mg/m<sup>3</sup>]



Dominio di calcolo

Centrale

STATISTICHE

Massimo:	4.36E-02
Media:	5.30E-03
1° quartile:	2.55E-03
Mediana:	3.99E-03
3° quartile:	6.55E-03



Sistema di Riferimento  
 ETRS89 / UTM zona 32N

