

Legenda



TRACCIATO DI PROGETTO

- Opere in progetto
- Ambito territoriale di studio ristretto (500m Nord + 500m Sud)

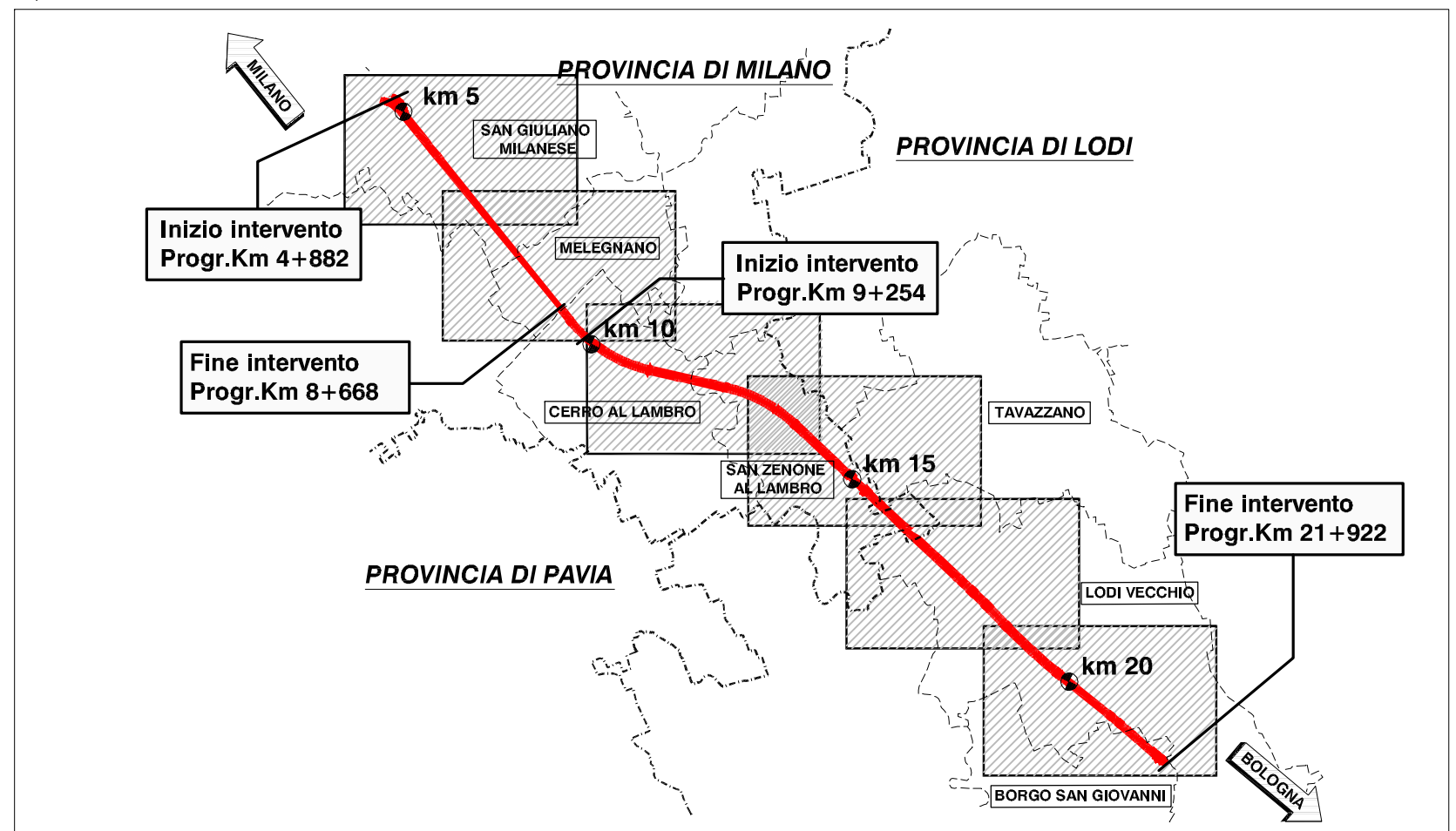
PRESENZE ARCHEOLOGICHE

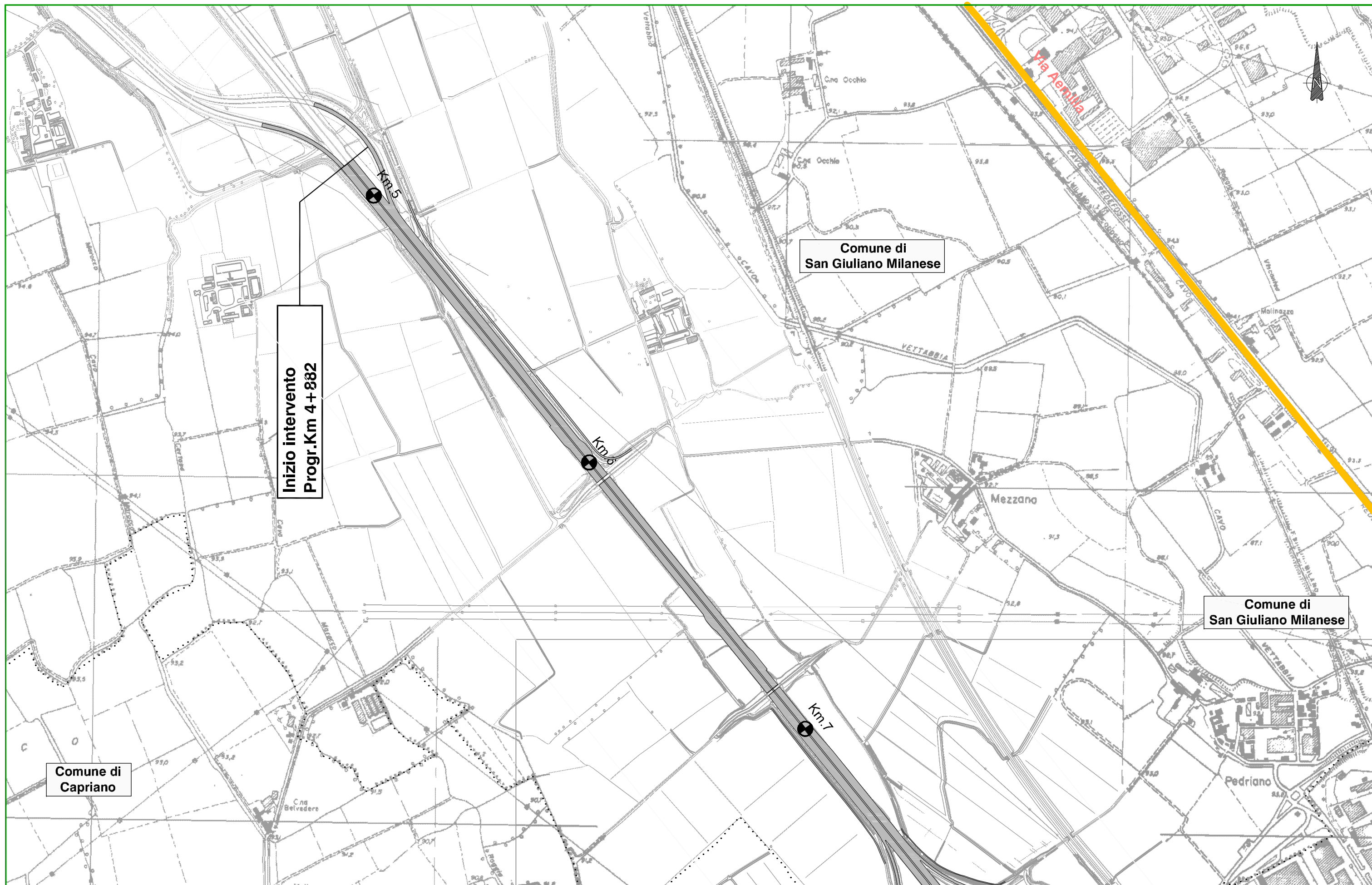
-  Abitato
-  Evidenza archeologica
-  Tomba/Necropoli
-  Materiale sporadico
-  Strada/Asse centuriale
-  Paleoalveo
-  Vincolo archeologico

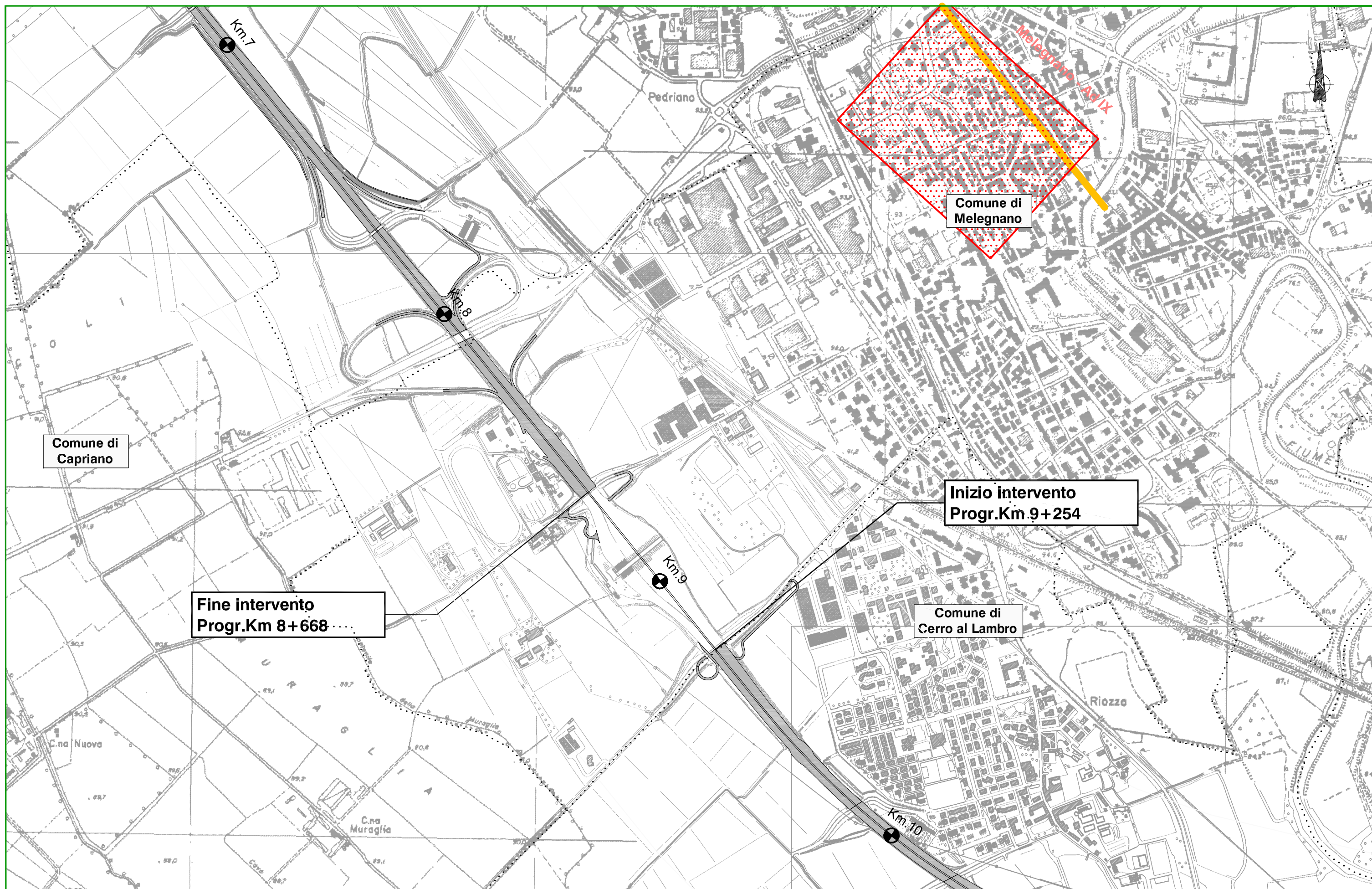
CONFINI

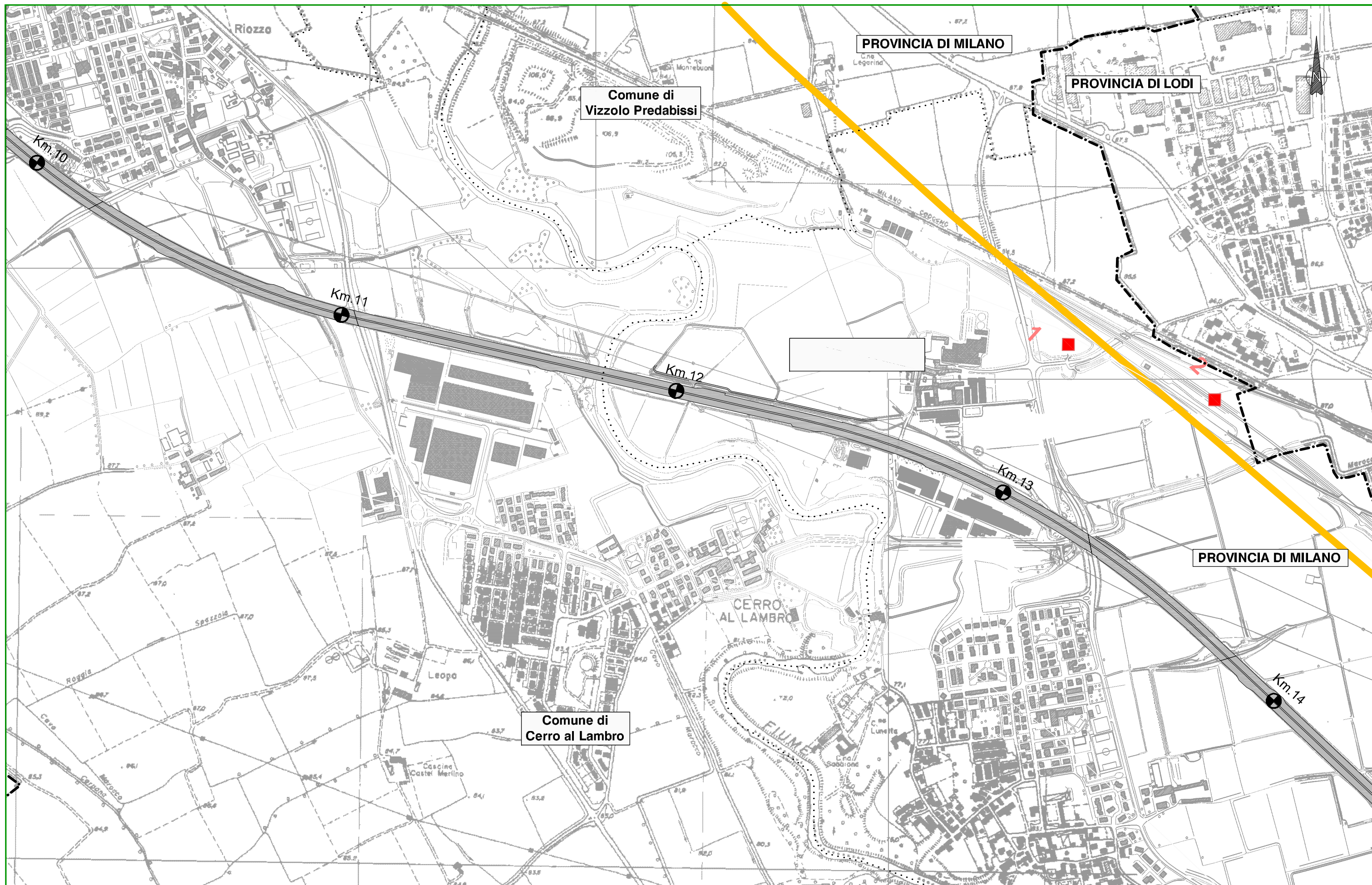
-  Confini provinciali
-  Confini comunali

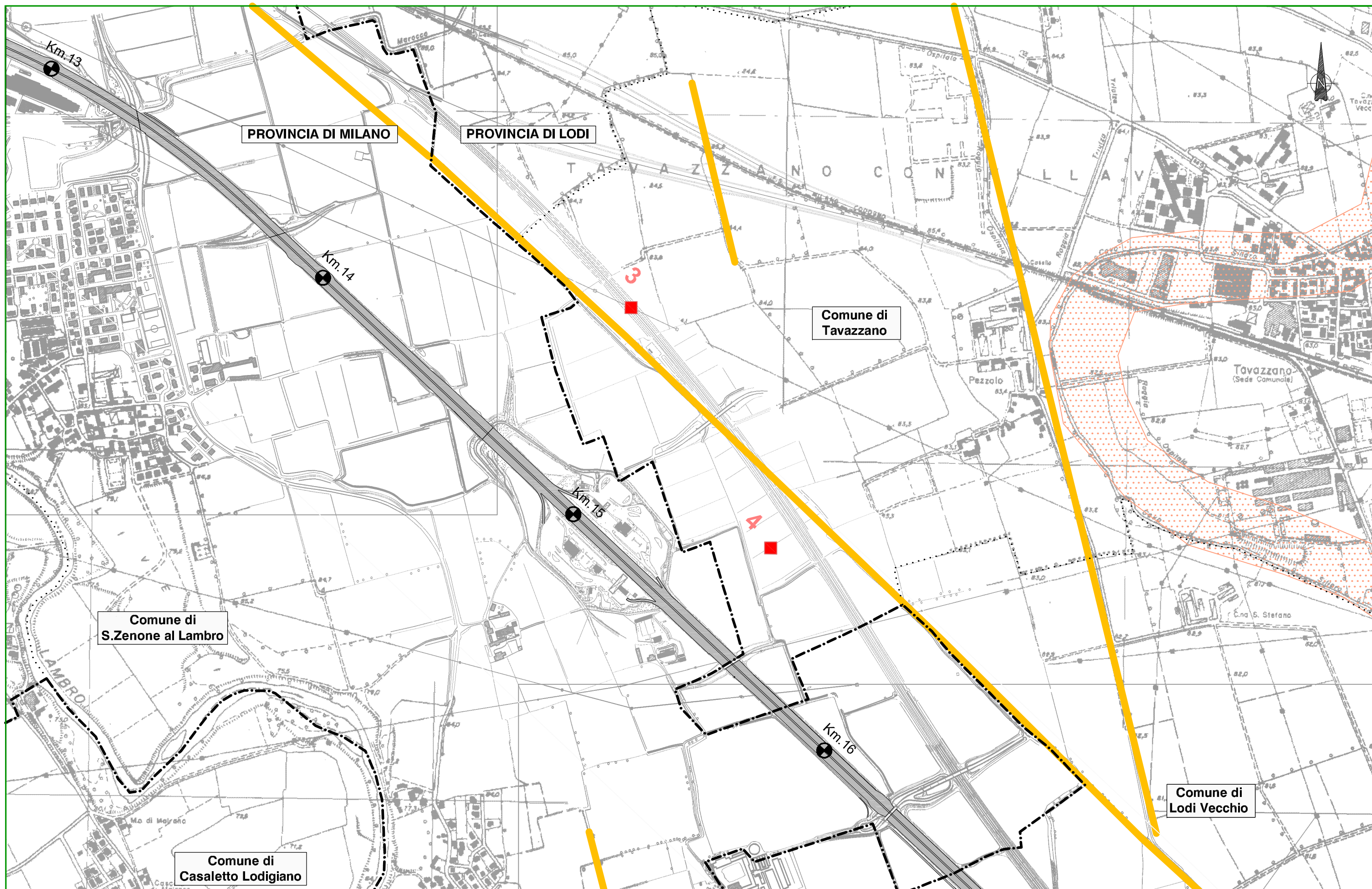
Quadro di unione











VERIFICA DI IMPATTO ARCHEOLOGICO
CARTA DELLE PRESENZE ARCHEOLOGICHE

