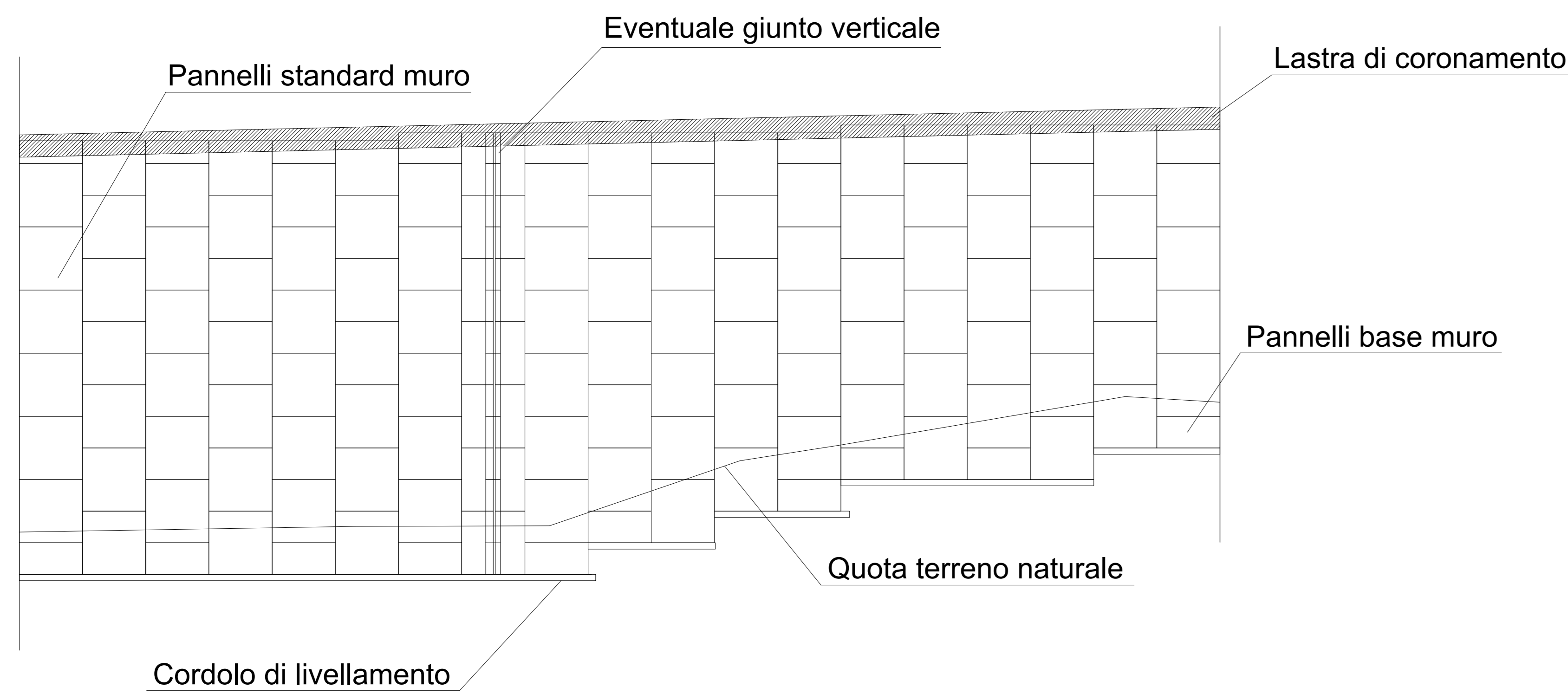
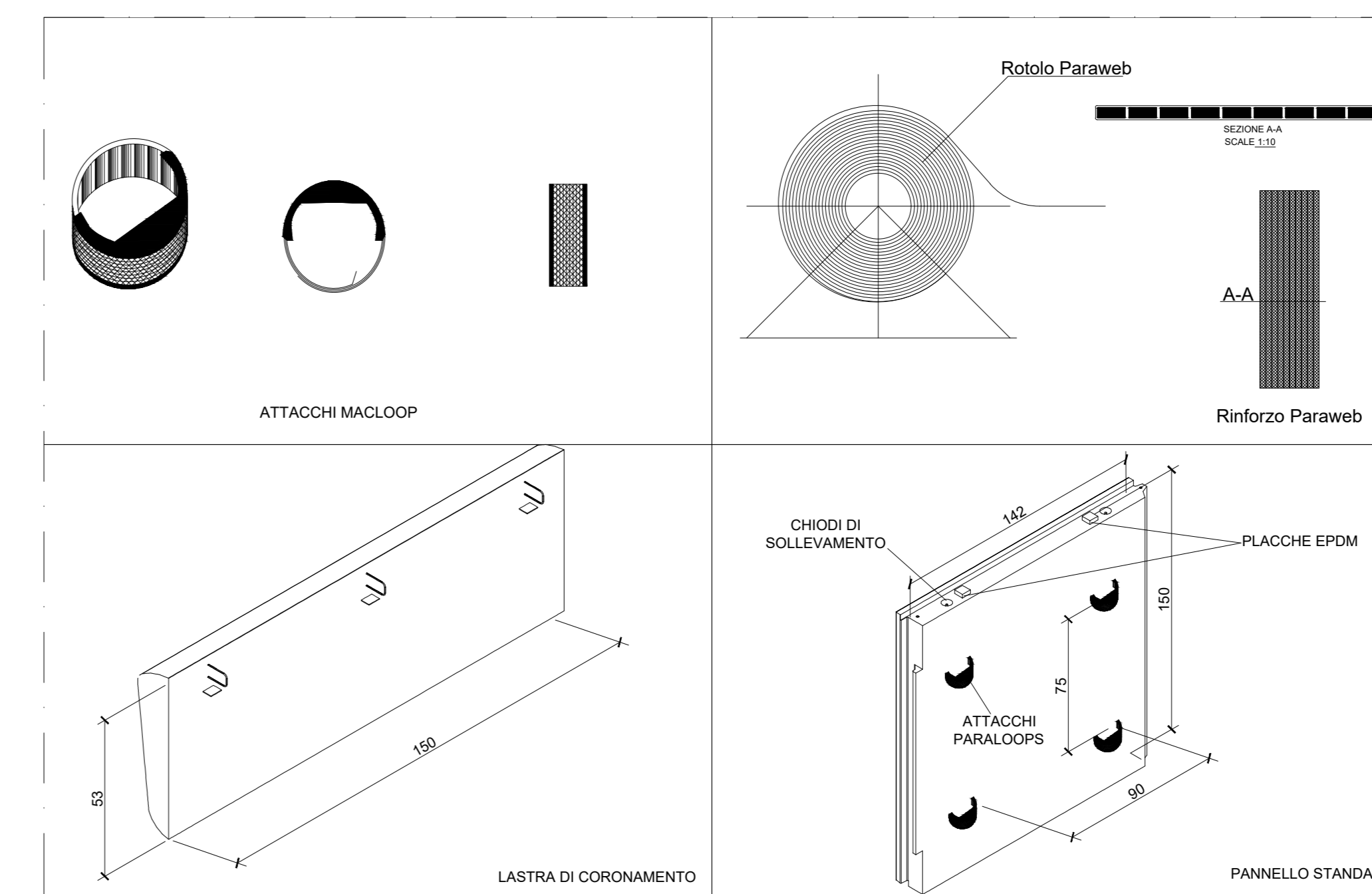
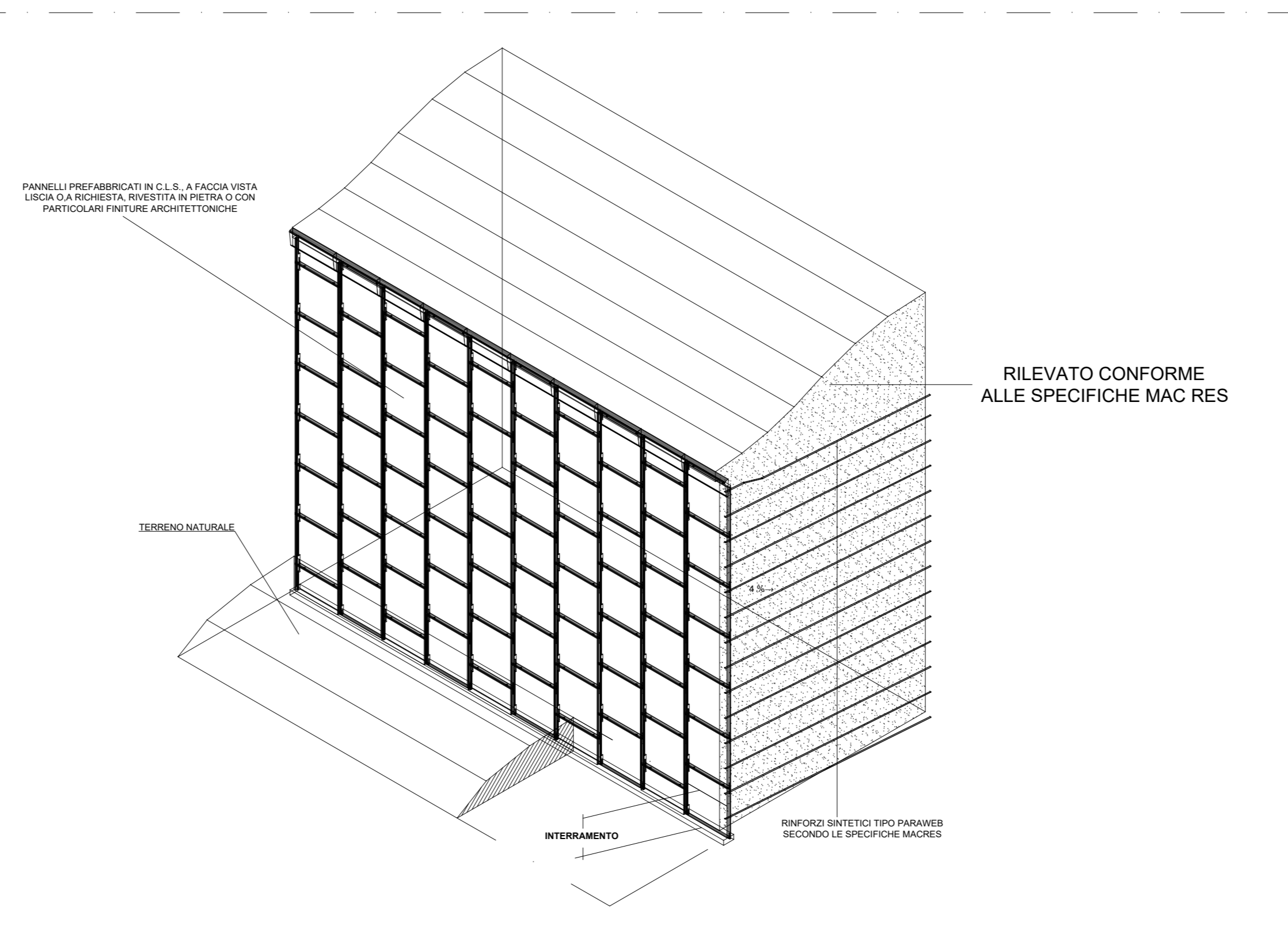


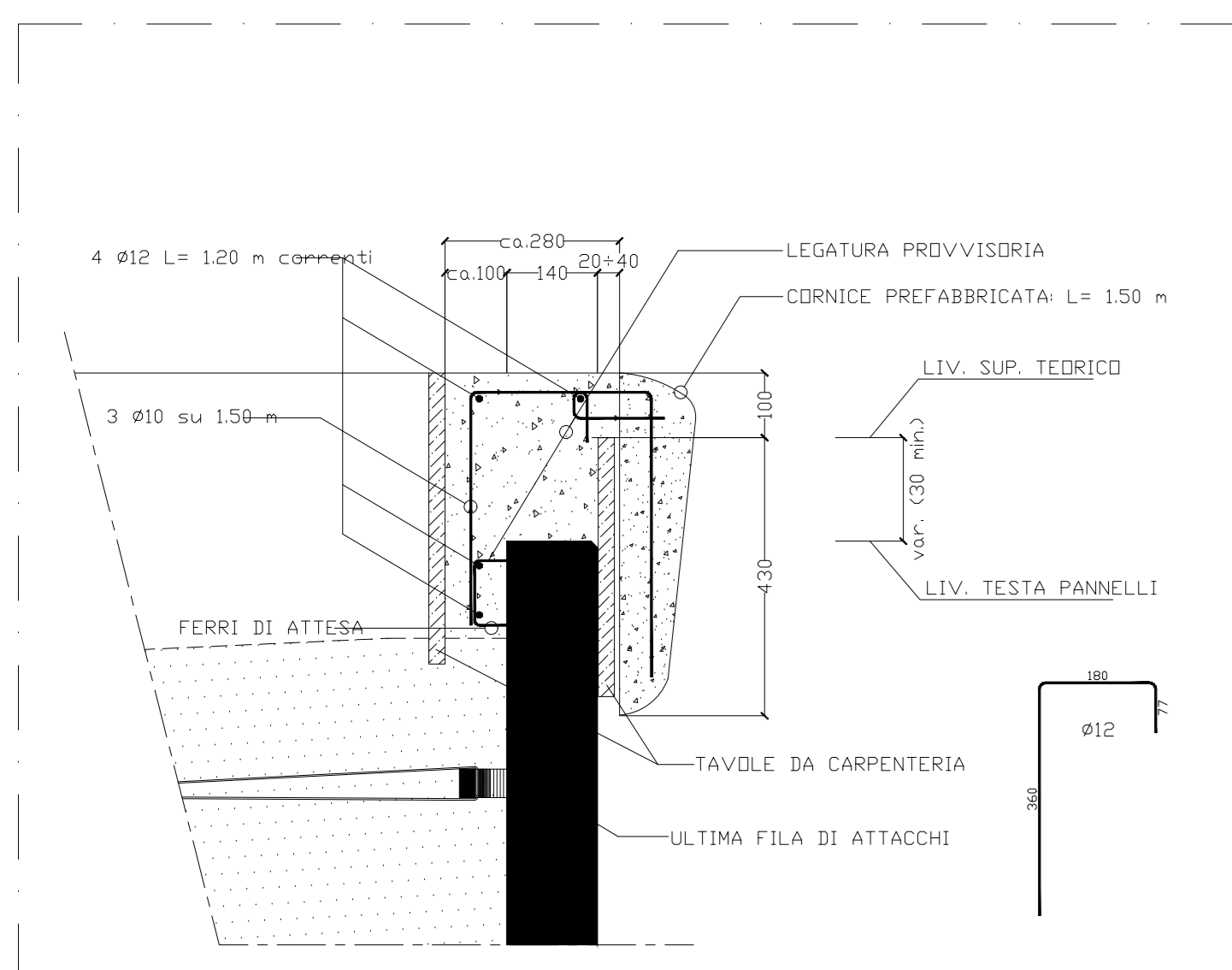
Prospetto tipo di muro di sostegno a paramento verticale tipo MacRes



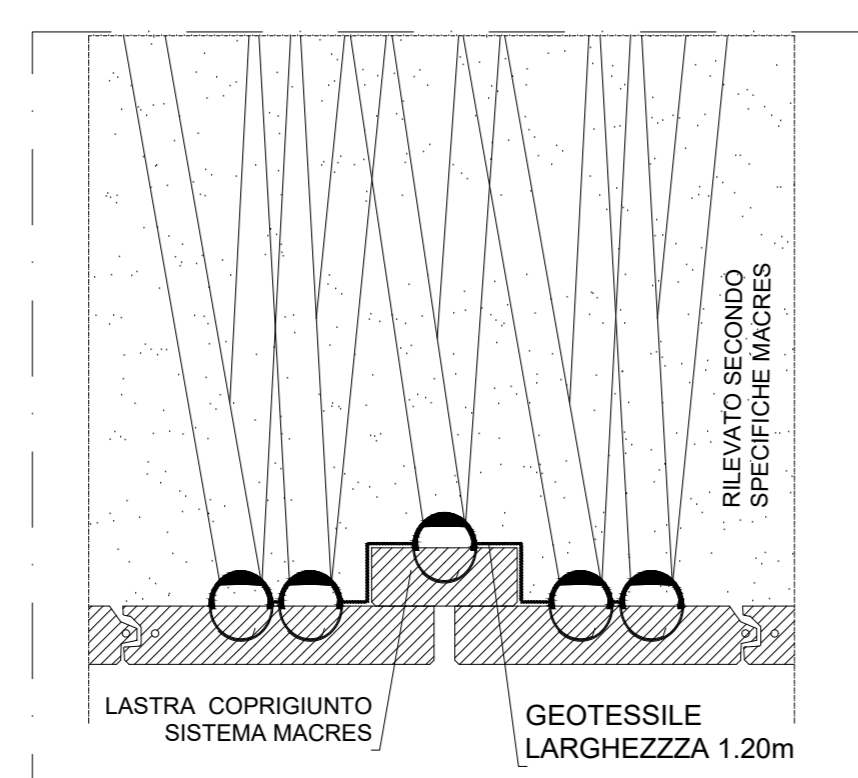
Prospettiva struttura MacRes



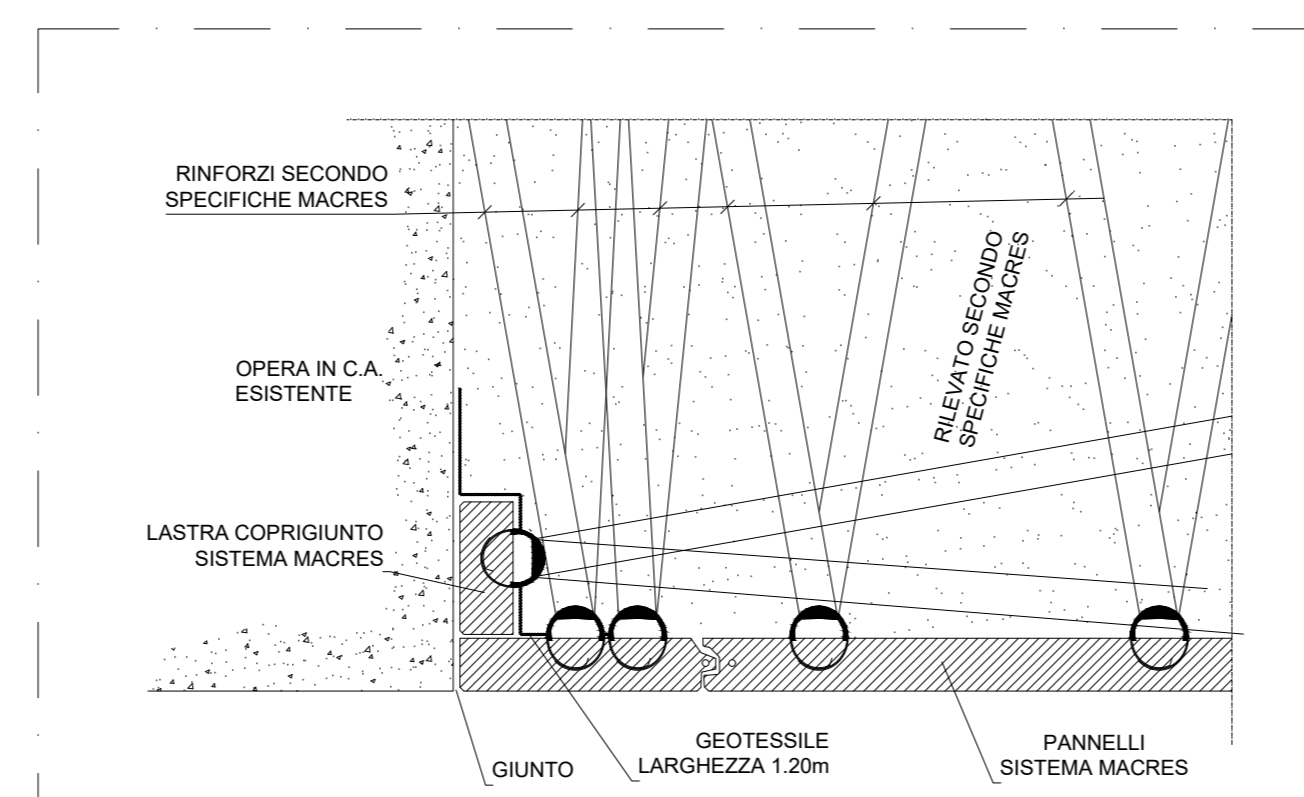
Elementi costituenti il Sistema MacRes



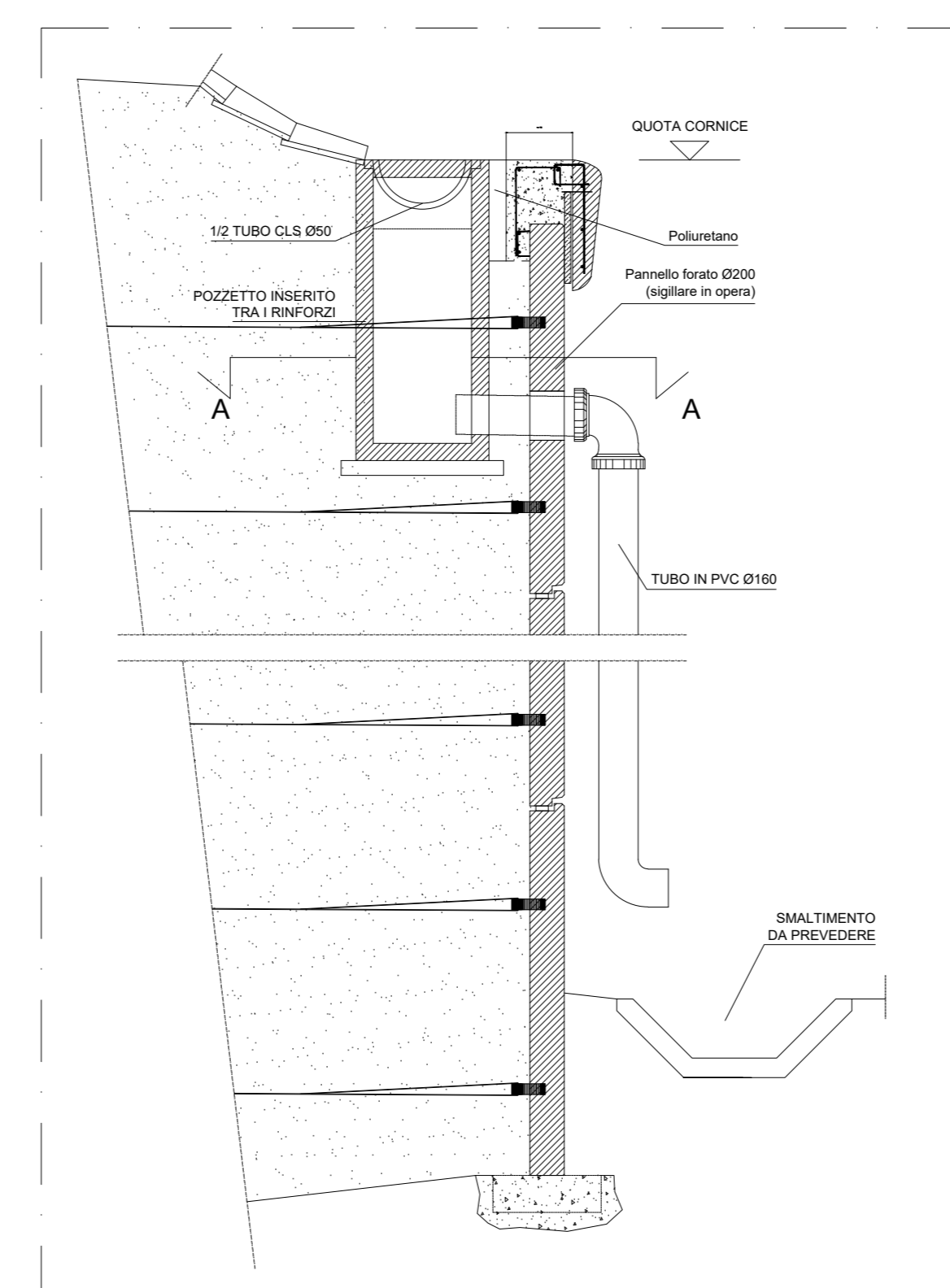
Dettaglio testa muro (1:10)



Dettaglio giunto verticale (1:20)

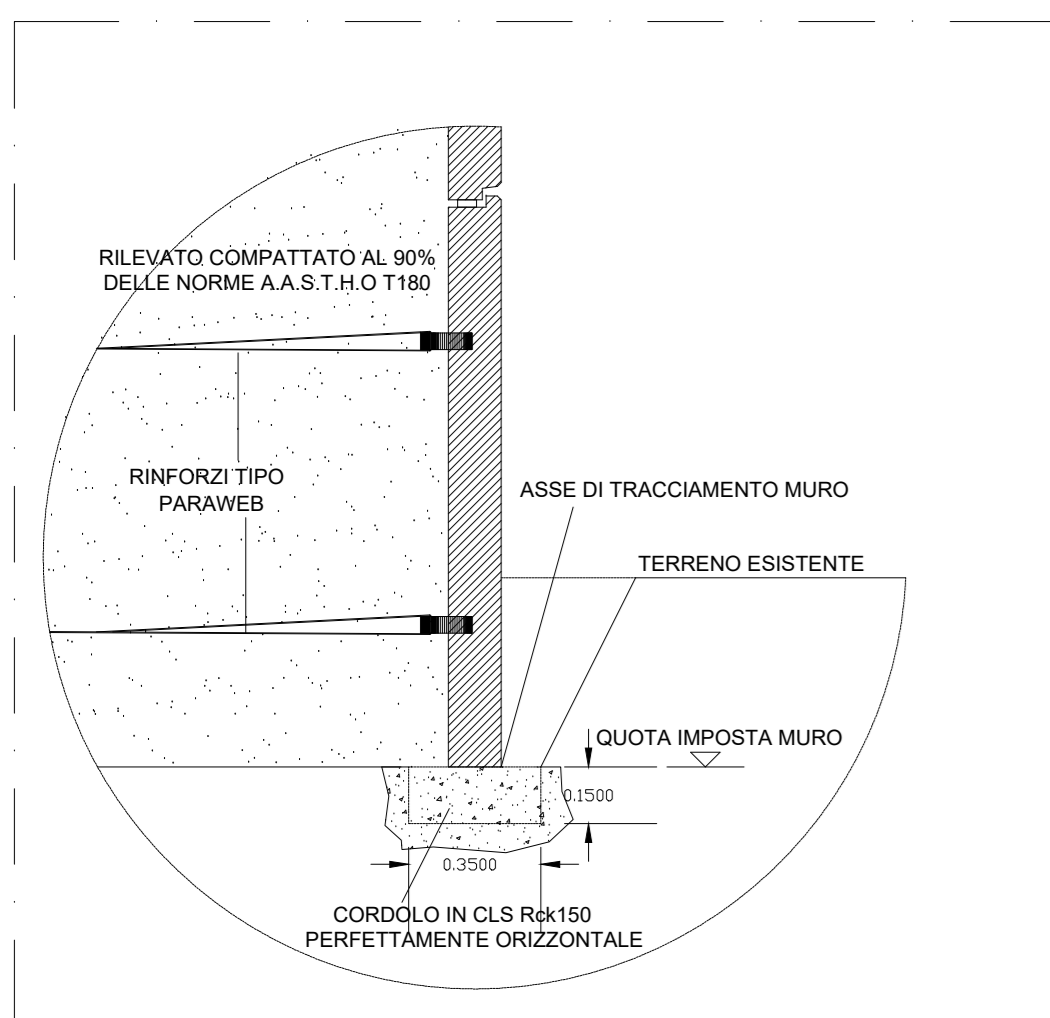


Raccordo paramento MacRes con opera in c.a. (1:20)

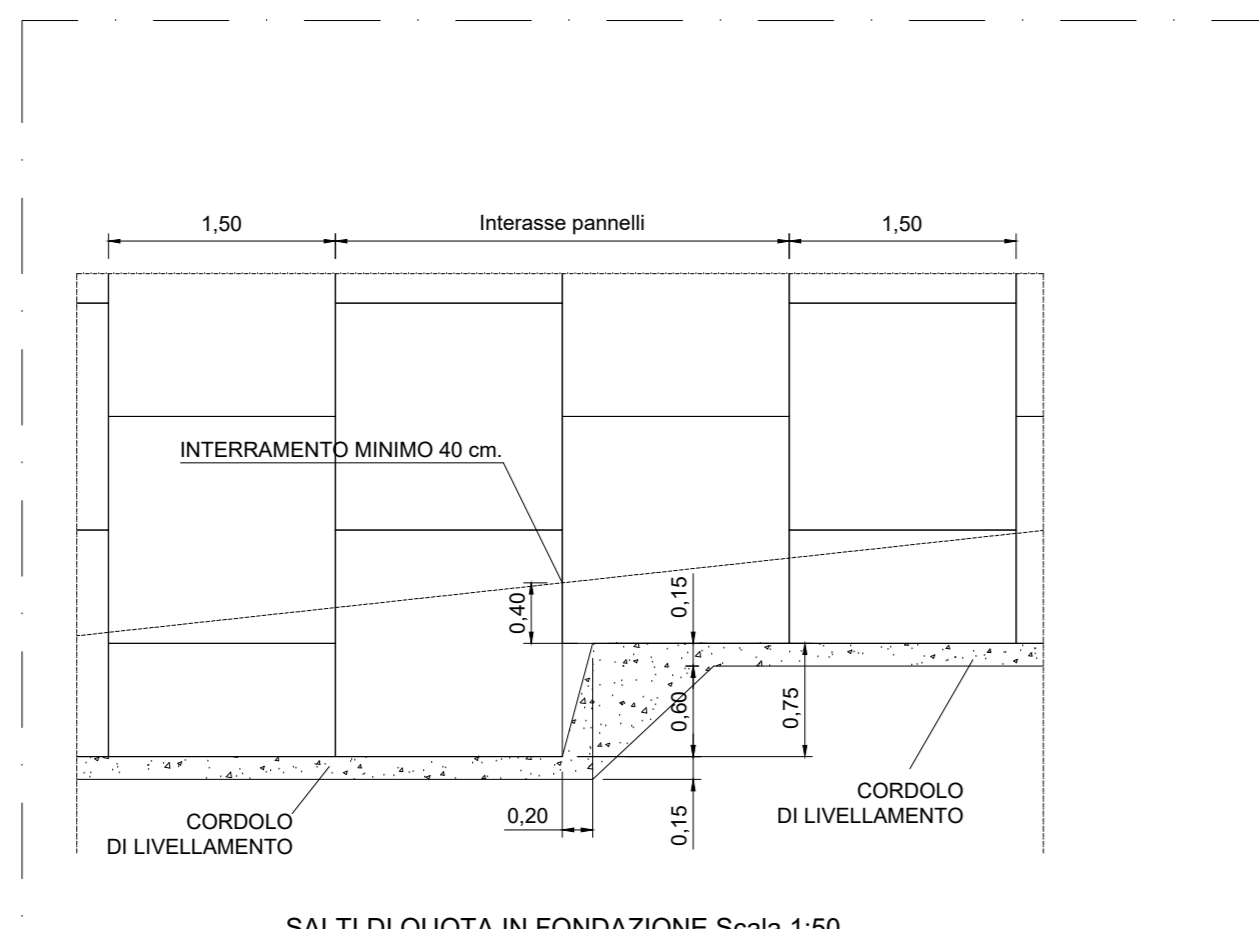


Pozzetti scarico acque muro di sottoscampa

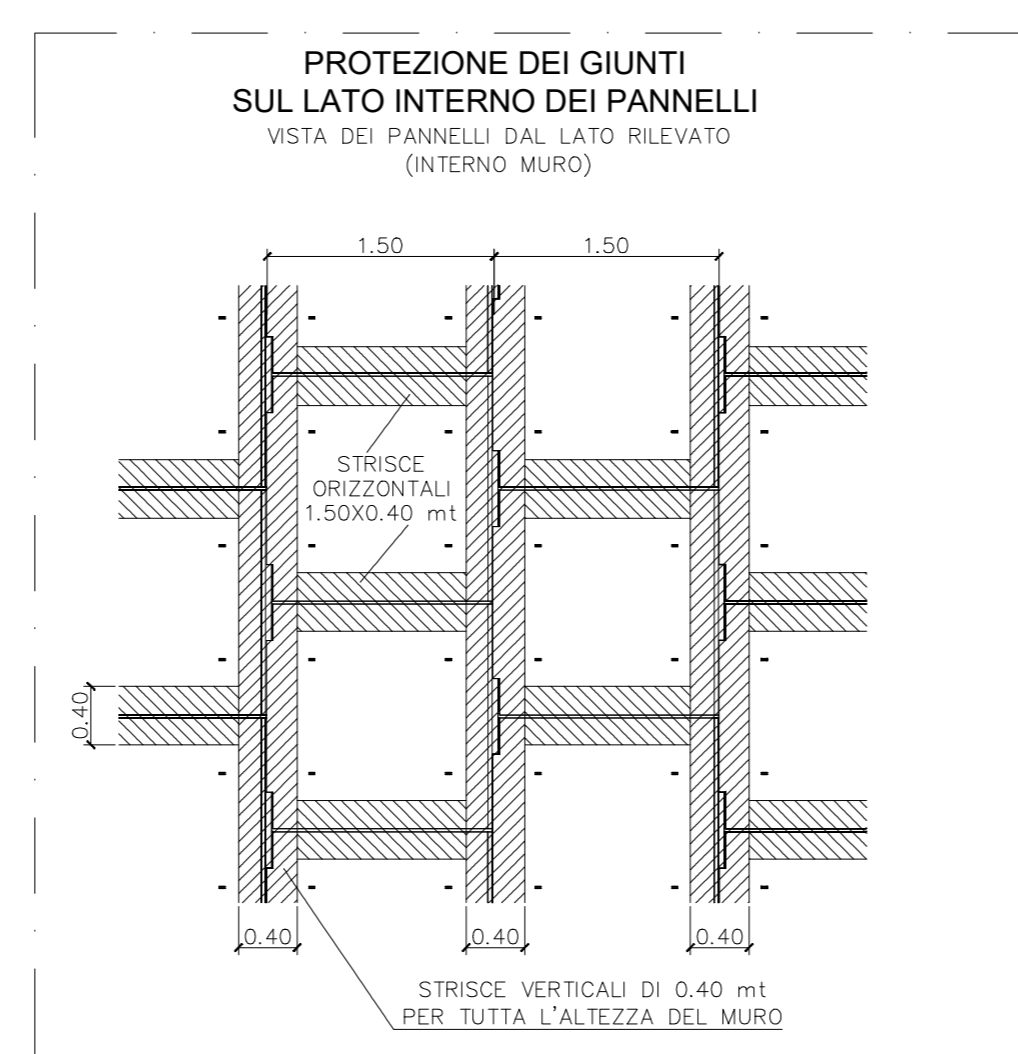
Materiale costituente il Rilevato rinforzato
Per la realizzazione del rilevato rinforzato devono essere impiegate le seguenti norme:
a) Il materiale da rilevato sarà idoneo quando la percentuale passante al setaccio da 75 micron (0,075 mm), secondo l'analisi granulometrica, è inferiore del 15%.



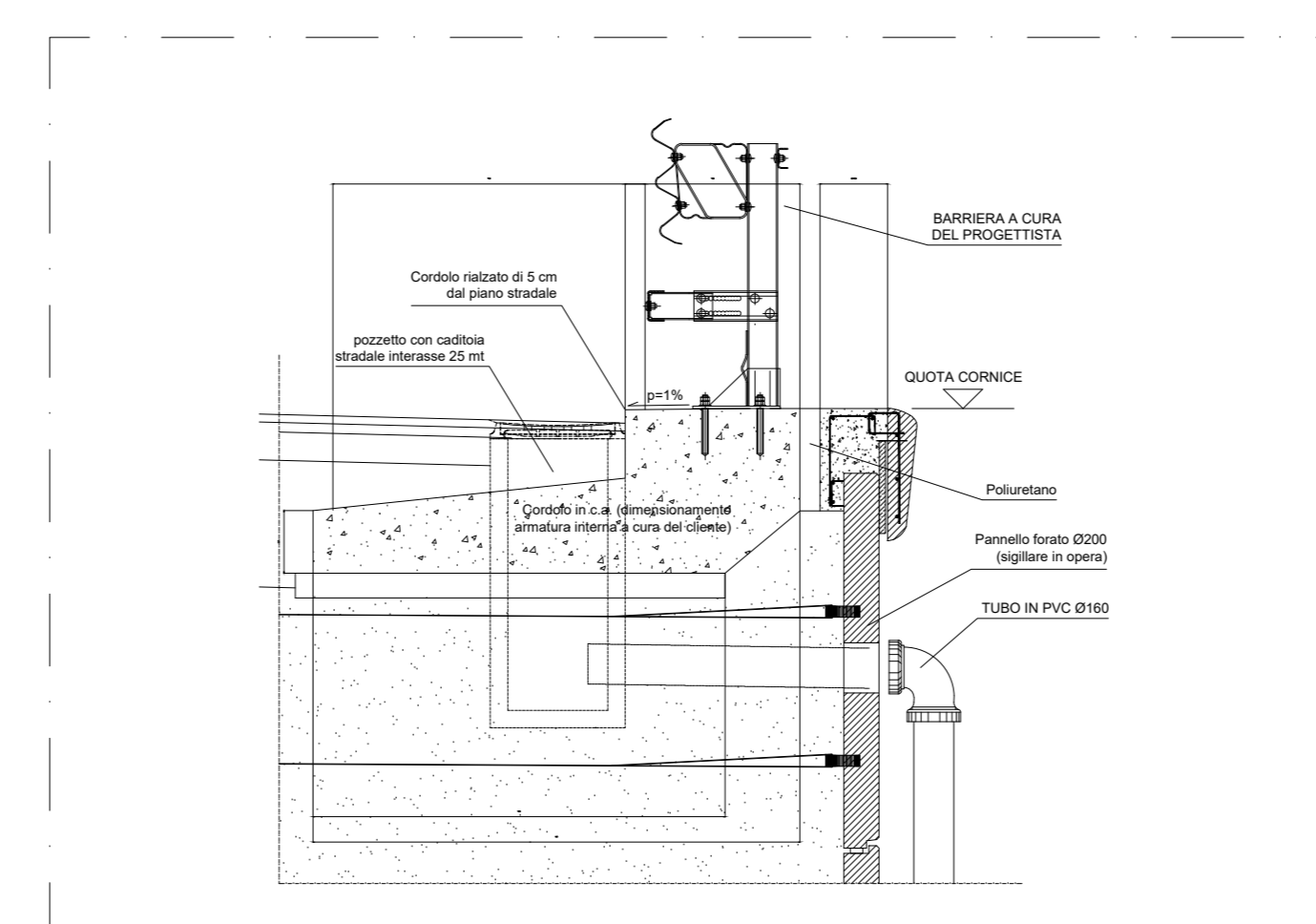
Cordolo di fondazione (1:20)



Salti di quota in fondazione(1:50)

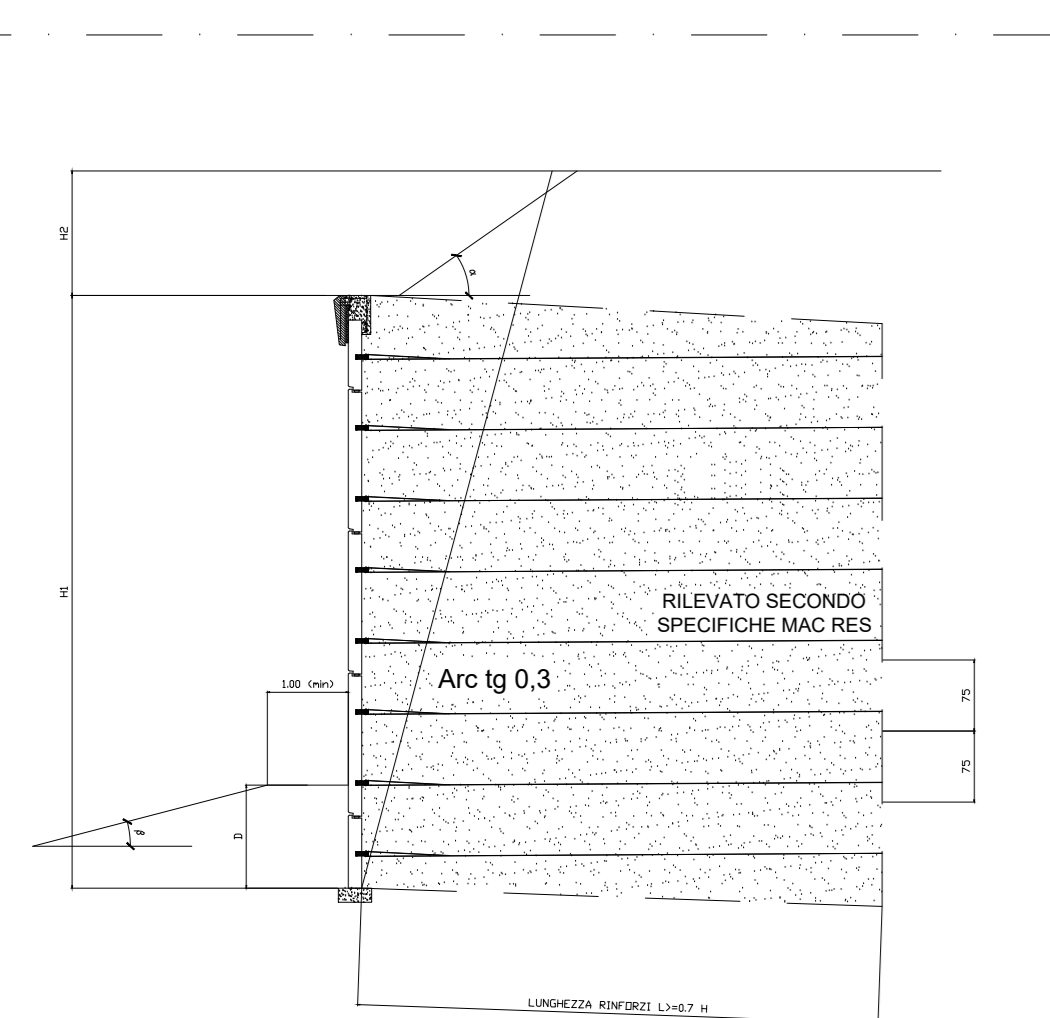


Disposizione geotessile (1:50)

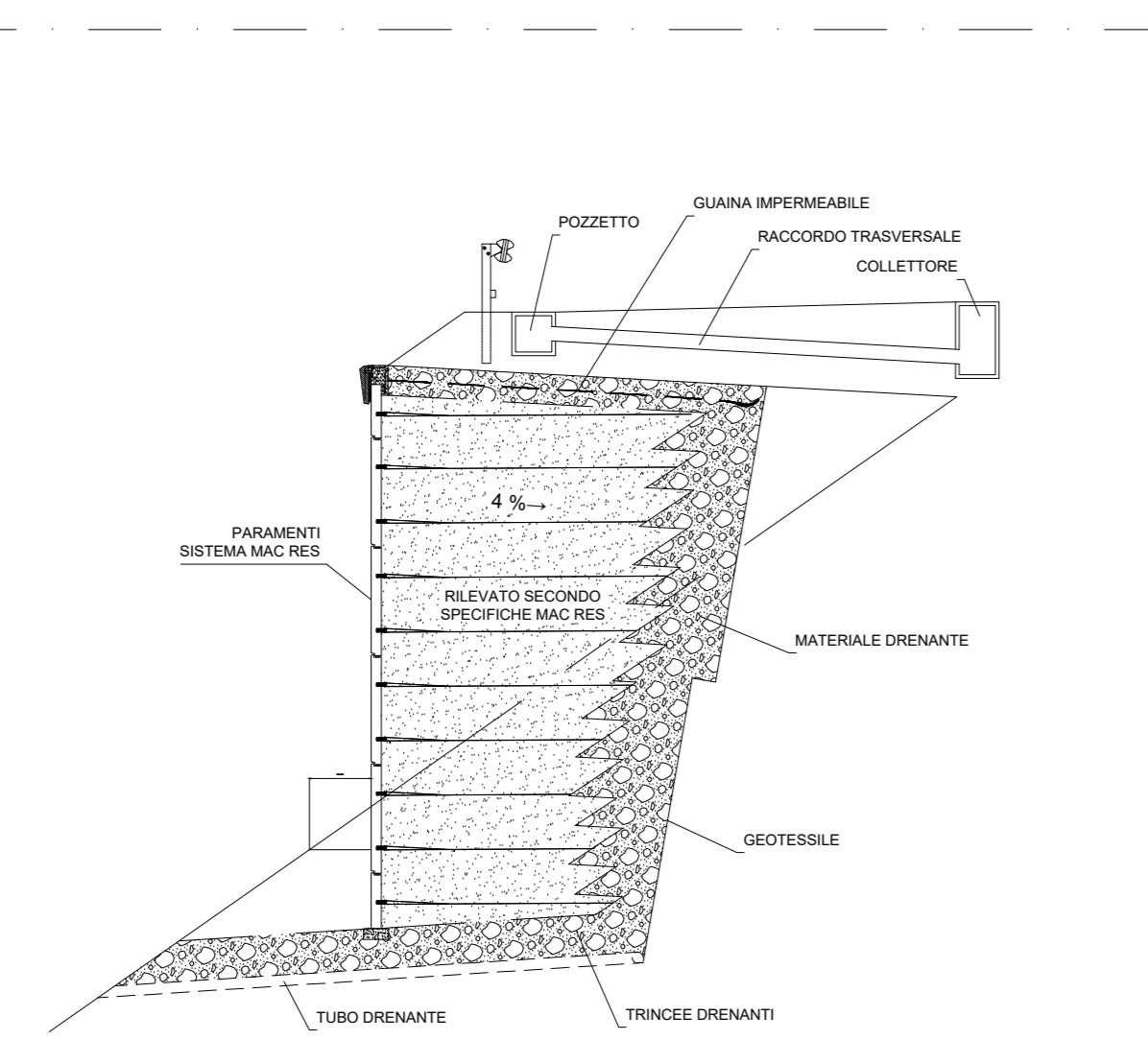


Dettaglio del Securvia

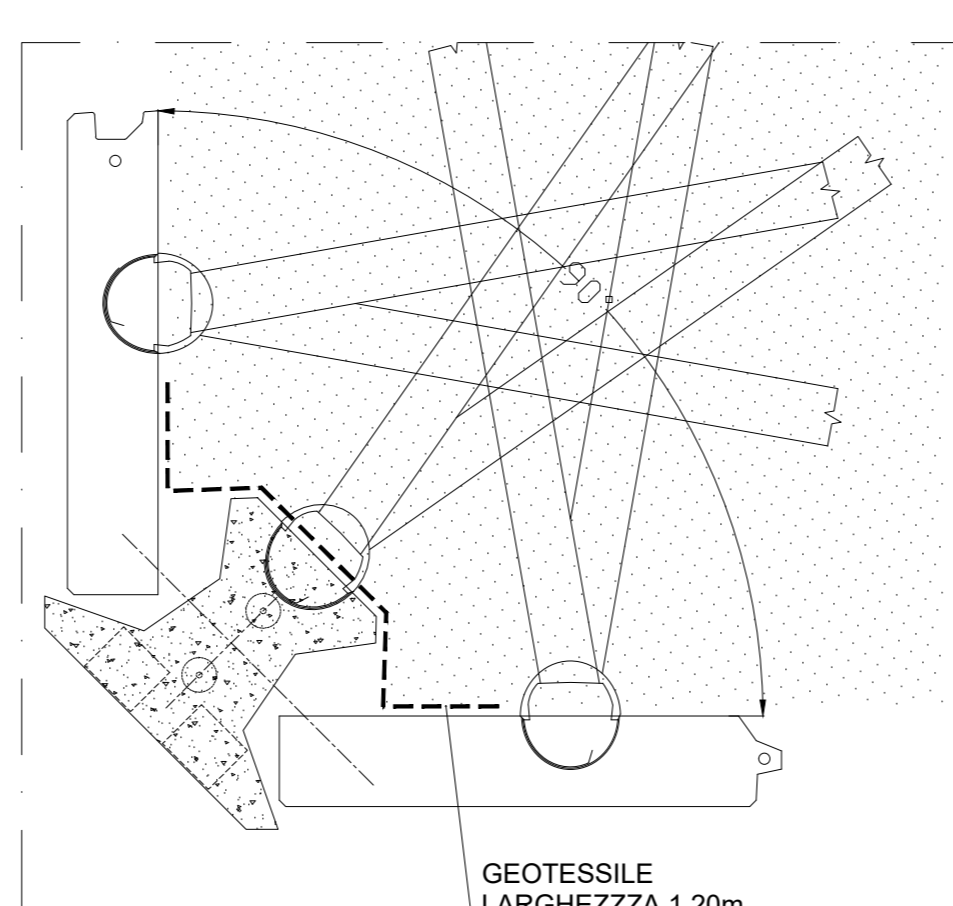
Table of materials listing types like Paraweb, panels, and leveling cord with their respective technical specifications and standards.



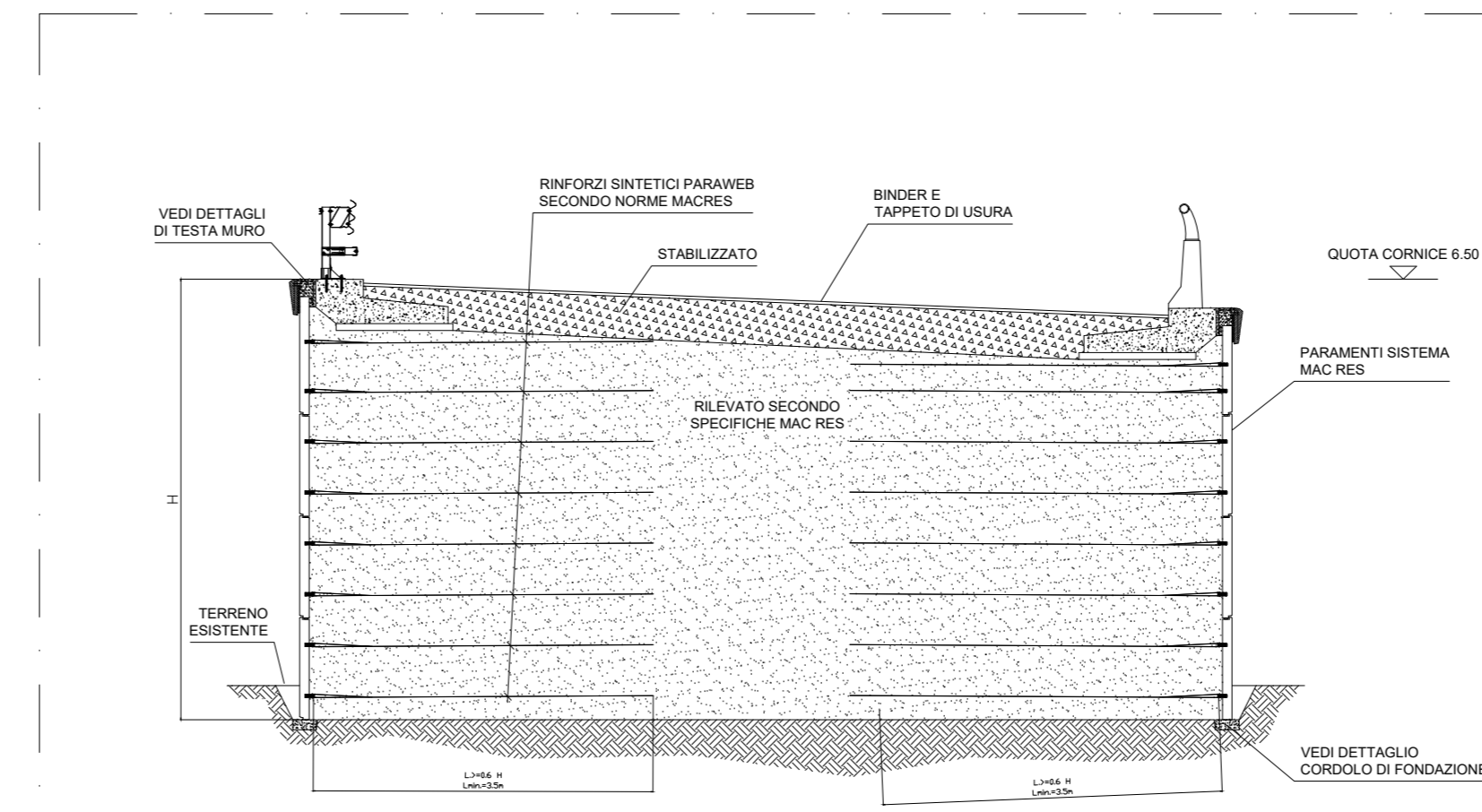
Sezione tipo



Sezione tipo con protezione delle acque



Elemento d'angolo



Sezione tipo stradale

Project information block including Sanas logo, project name 'ITINERARIO INTERNAZIONALE E78 S.G.C. GROSSETO - FANO', location 'CAVALCAVIA DI SVINCOLO PONTICINI', and a table for revision and scale.