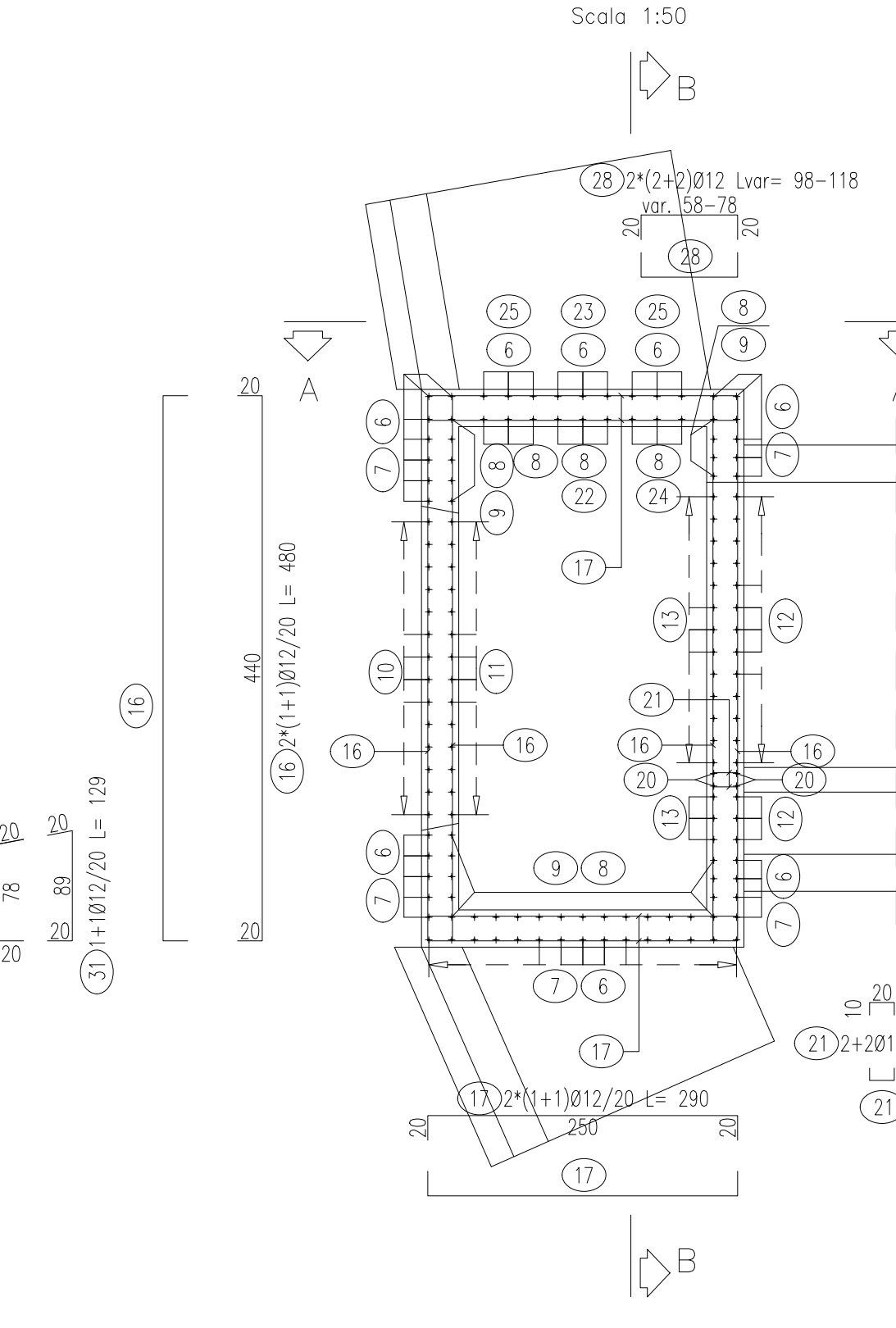
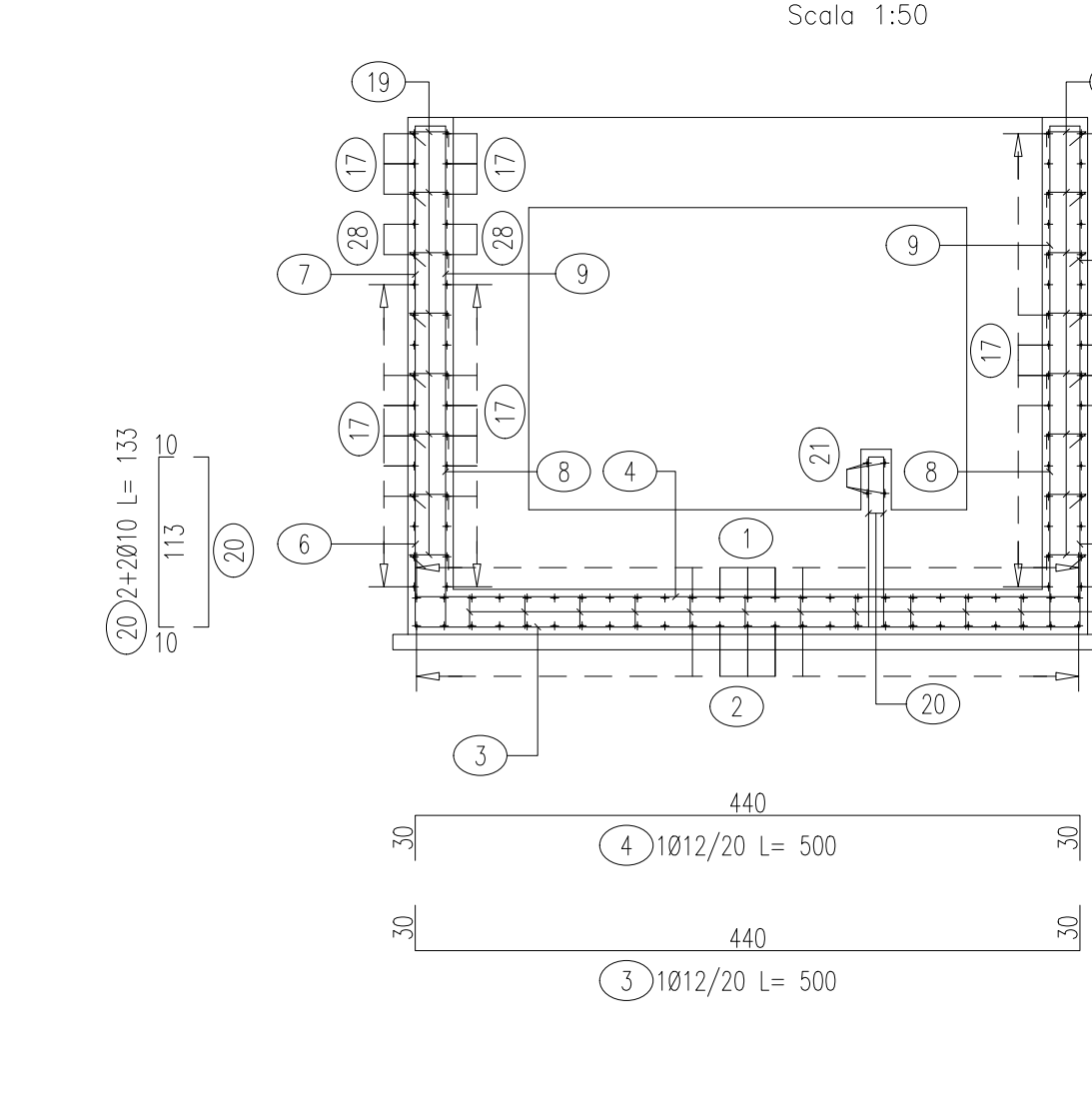


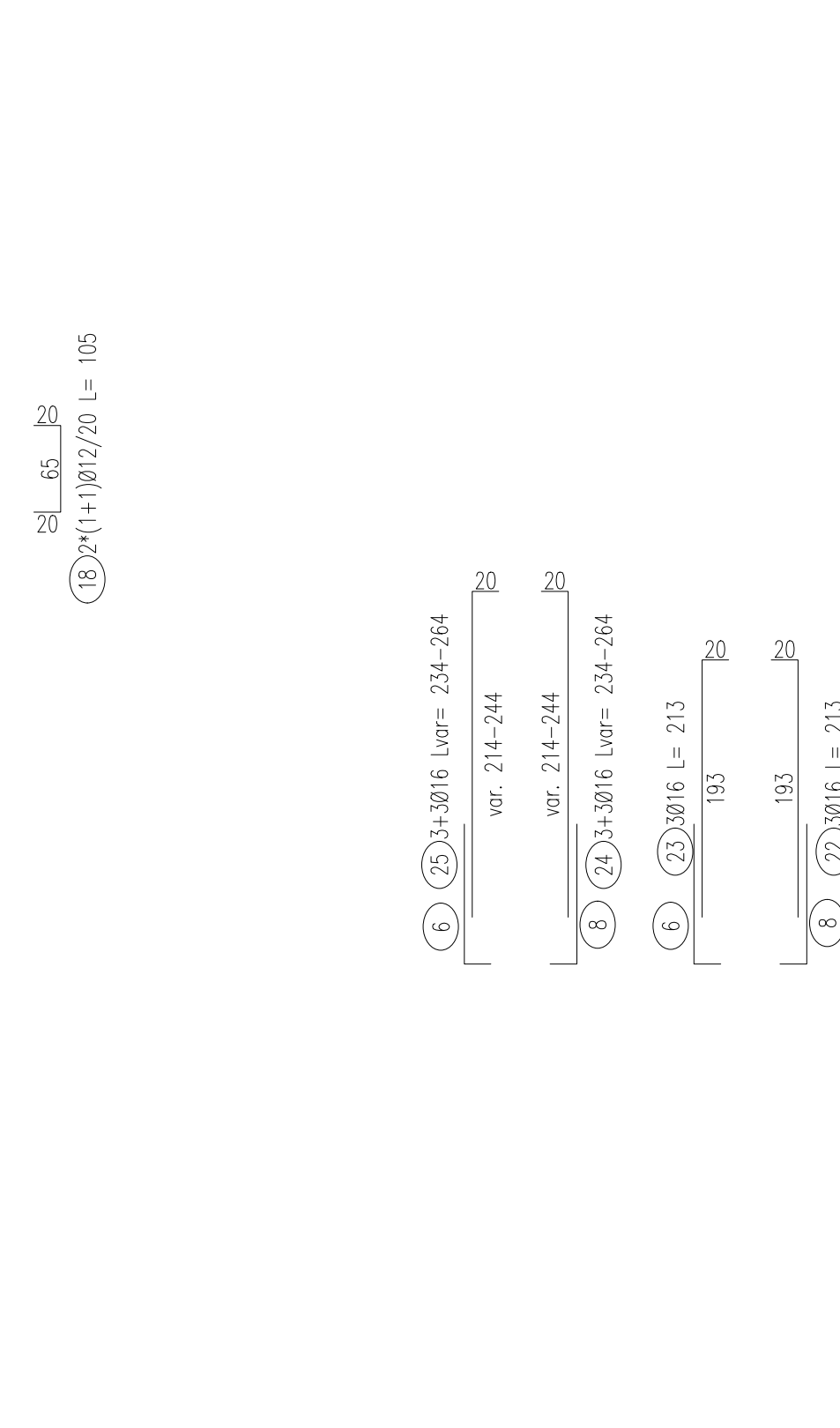
PIANTA SPICCATO



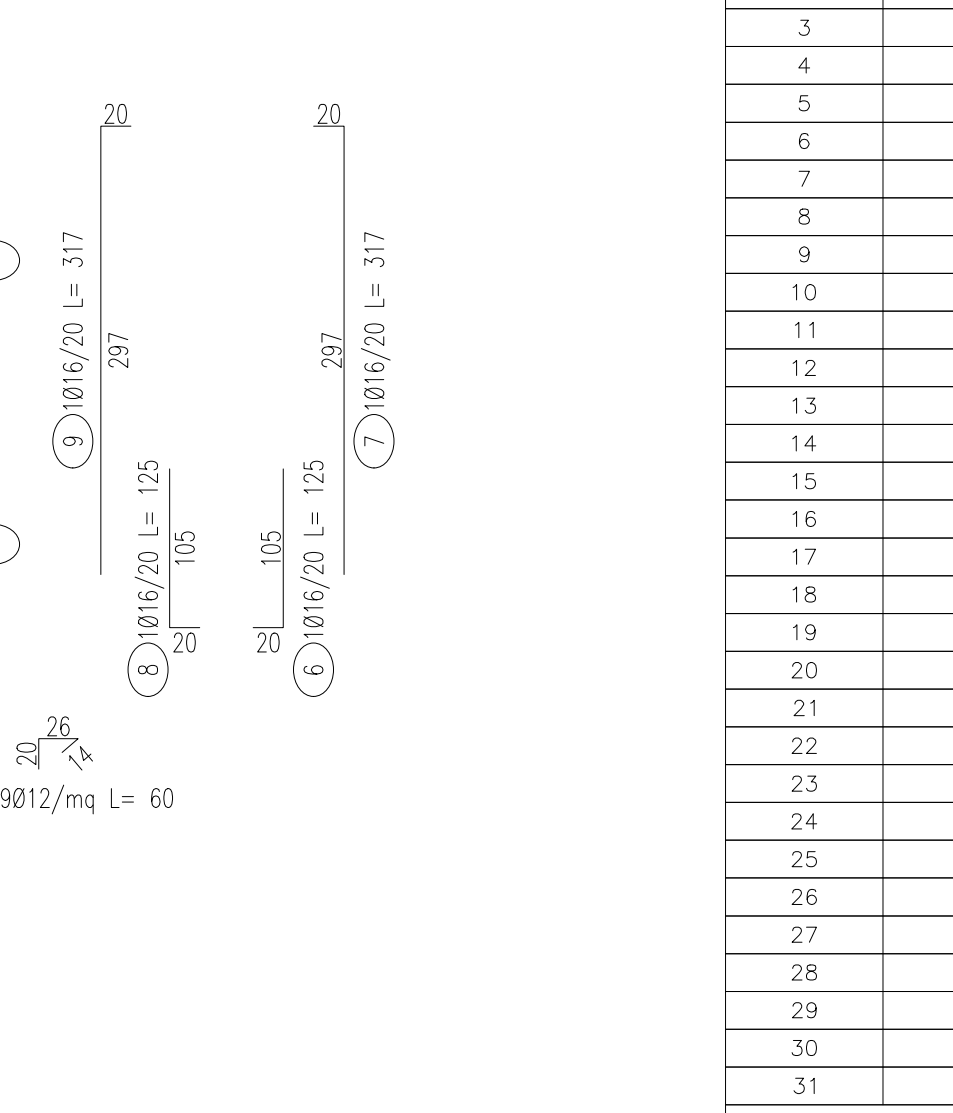
SEZIONE B-B



ARMATURA POZZETTO DI INGRESSO

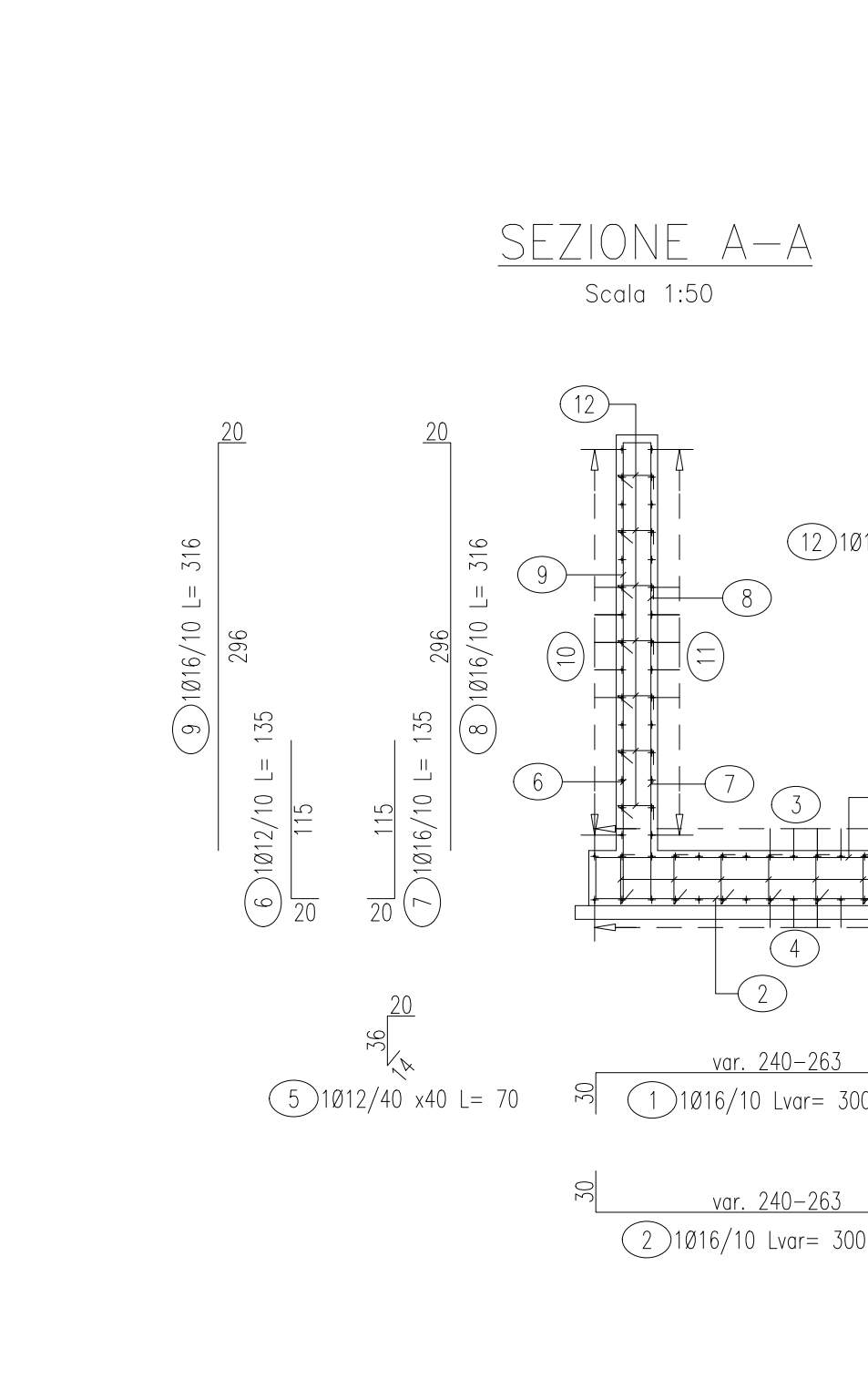


SEZIONE A-A

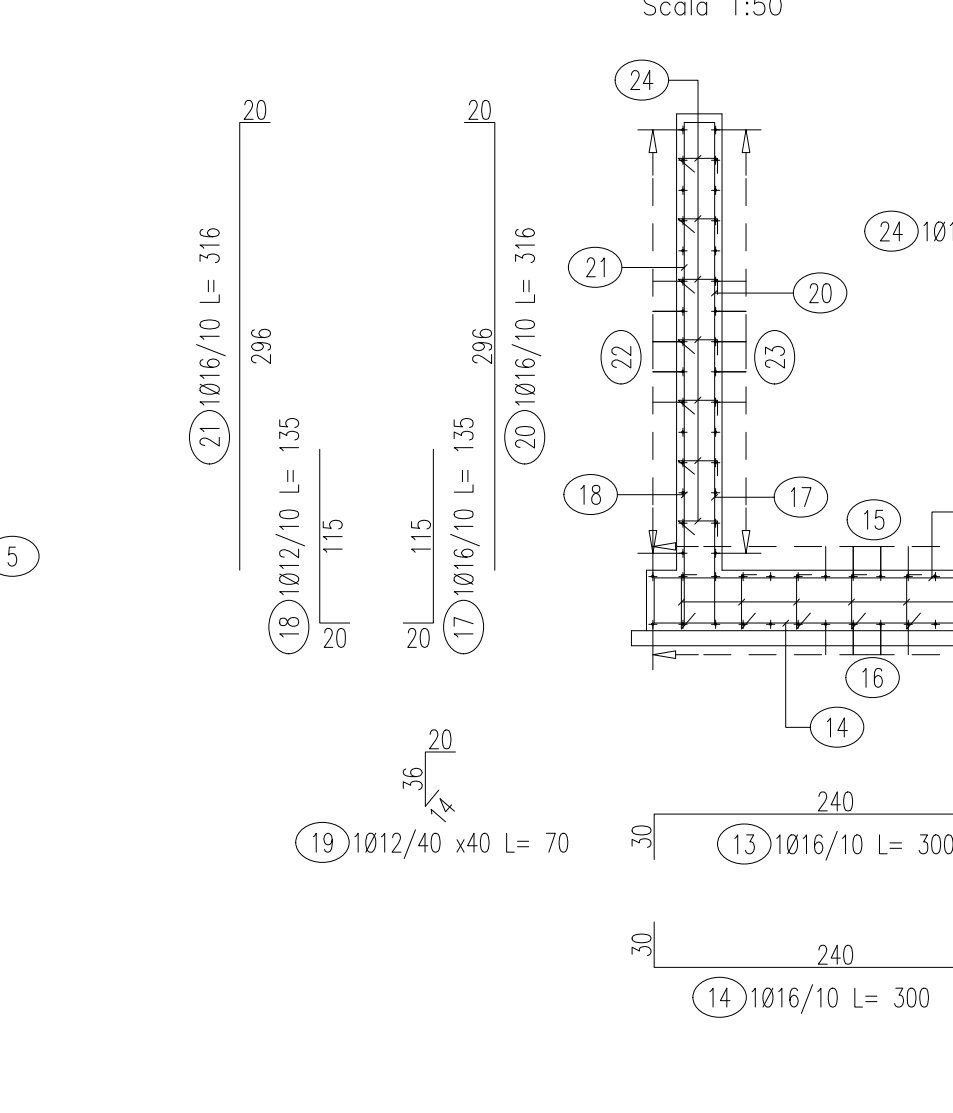


Pos.	Dià #	Ferri	Totale Ferri	Lung.(cm)	kg/m	Tot. Kg
1	12	24	310	0.888	66.1	
2	12	1	24	310	0.888	66.1
3	12	1	14	500	0.888	62.2
4	12	1	14	500	0.888	62.2
5	12	6	70	60	0.888	37.3
6	16	1	45	125	1.578	88.8
7	16	1	35	317	1.578	180.1
8	16	1	38	125	1.578	75.0
9	16	1	29	317	1.578	145.1
10	16	1	14	129	1.578	28.5
11	16	1	14	129	1.578	28.5
12	16	1	16	112	1.578	28.3
13	16	1	16	112	1.578	28.3
14	16	1	16	90	1.578	22.7
15	16	1	16	90	1.578	22.7
16	12	2*(1+1)	26	480	0.888	110.8
17	12	2*(1+1)	60	290	0.888	144.5
18	12	2*(1+1)	40	105	0.888	37.3
19	12	9	335	60	0.888	173.4
20	10	2+2	4	133	0.617	3.3
21	10	2+2	4	42	0.617	1.0
22	16	3	3	213	1.578	10.1
23	16	3	3	213	1.578	10.1
24	16	3+3	6	Var.234-264	1.578	23.6
25	16	3+3	6	Var.234-264	1.578	23.6
26	16	1	9	85	1.578	12.1
27	16	1	9	85	1.578	12.1
28	12	2*(1+2)	8	Var.88-118	0.888	7.7
29	12	1+1	26	119	0.888	27.5
30	12	2	2	300	0.888	5.3
31	12	1+1	26	129	0.888	28.8
TOTALE PESO					Kg.	1587.7

ARMATURA MURO INGRESSO



SEZIONE A-A

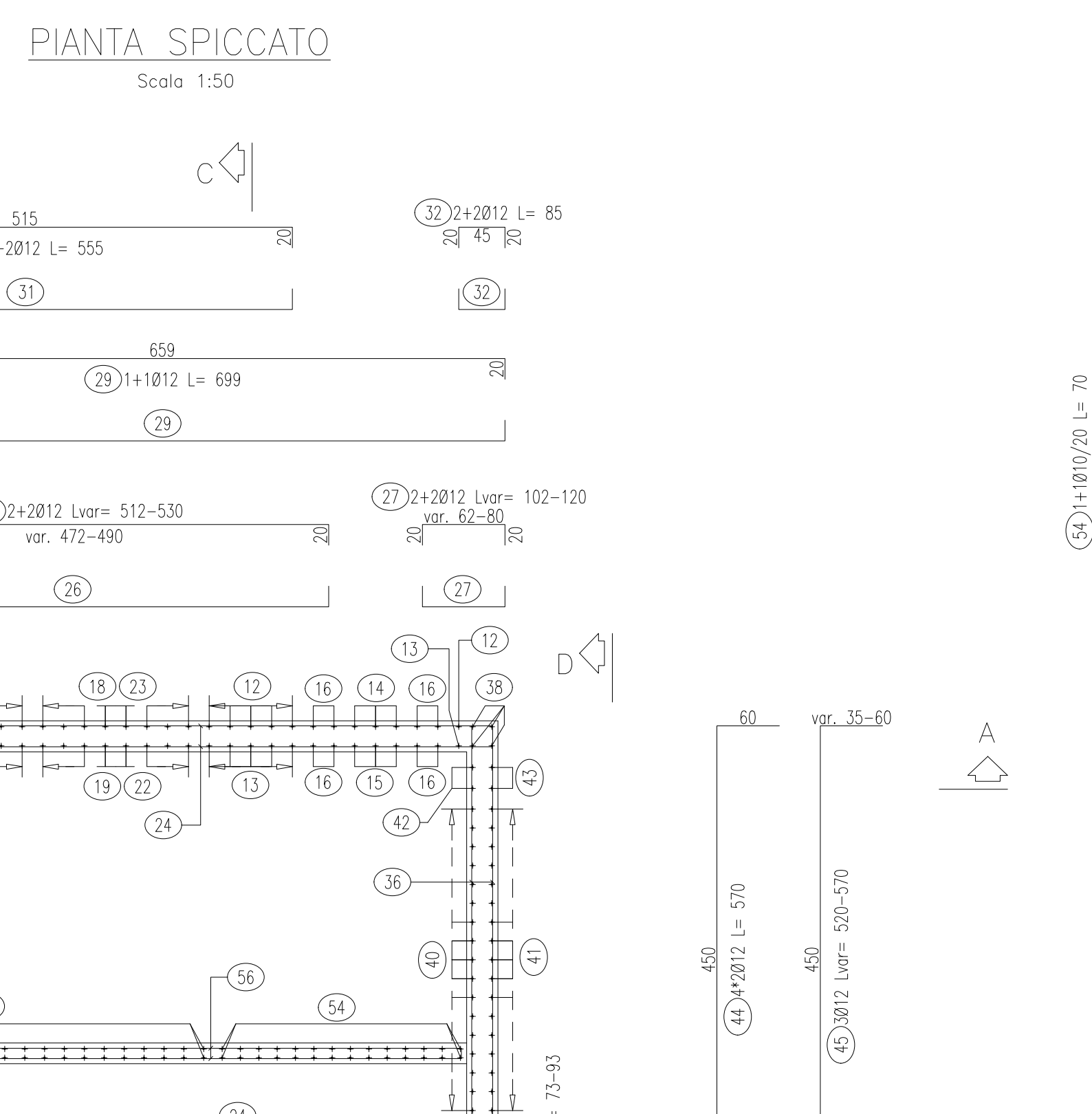


SEZIONE B-B

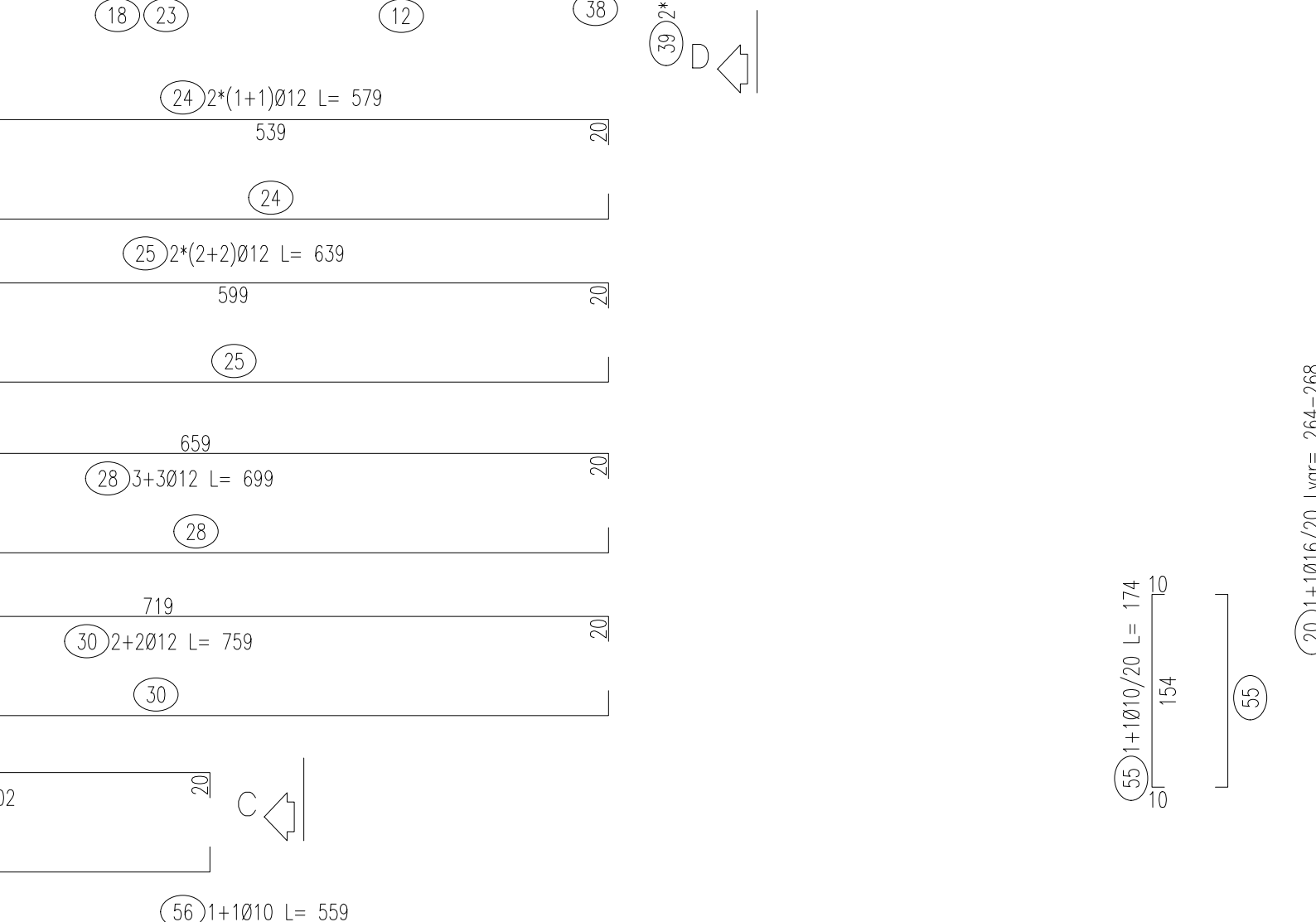


Pos.	Dià #	Ferri	Totale Ferri	Lung.(cm)	kg/m	Tot. Kg
1	16	1	21	Var.300-323	1.578	103.2
2	16	1	21	Var.300-323	1.578	103.2
3	12	1	14	Var.133-244	0.888	23.4
4	12	1	24	70	0.888	14.9
5	12	1	20	135	0.888	24.0
6	16	1	20	135	1.578	42.6
7	16	1	20	316	1.578	99.7
8	16	1	16	214	0.888	30.4
9	16	1	16	205	0.888	29.1
10	12	1	71	60	0.888	37.8
11	12	1	16	300	0.888	75.7
12	12	1	16	Var.201-245	0.888	27.7
13	12	1	14	Var.201-245	0.888	27.7
14	16	1	17	135	1.578	36.2
15	12	1	16	835	0.888	20.4
16	12	1	31	70	0.888	19.3
17	16	1	17	316	1.578	84.8
18	16	1	17	316	1.578	84.8
19	12	1	16	186	0.888	26.4
20	12	1	16	189	0.888	26.9
21	12	1	74	60	0.888	39.4
22	12	1	74	60	0.888	39.4
TOTALE PESO					Kg.	1176.7

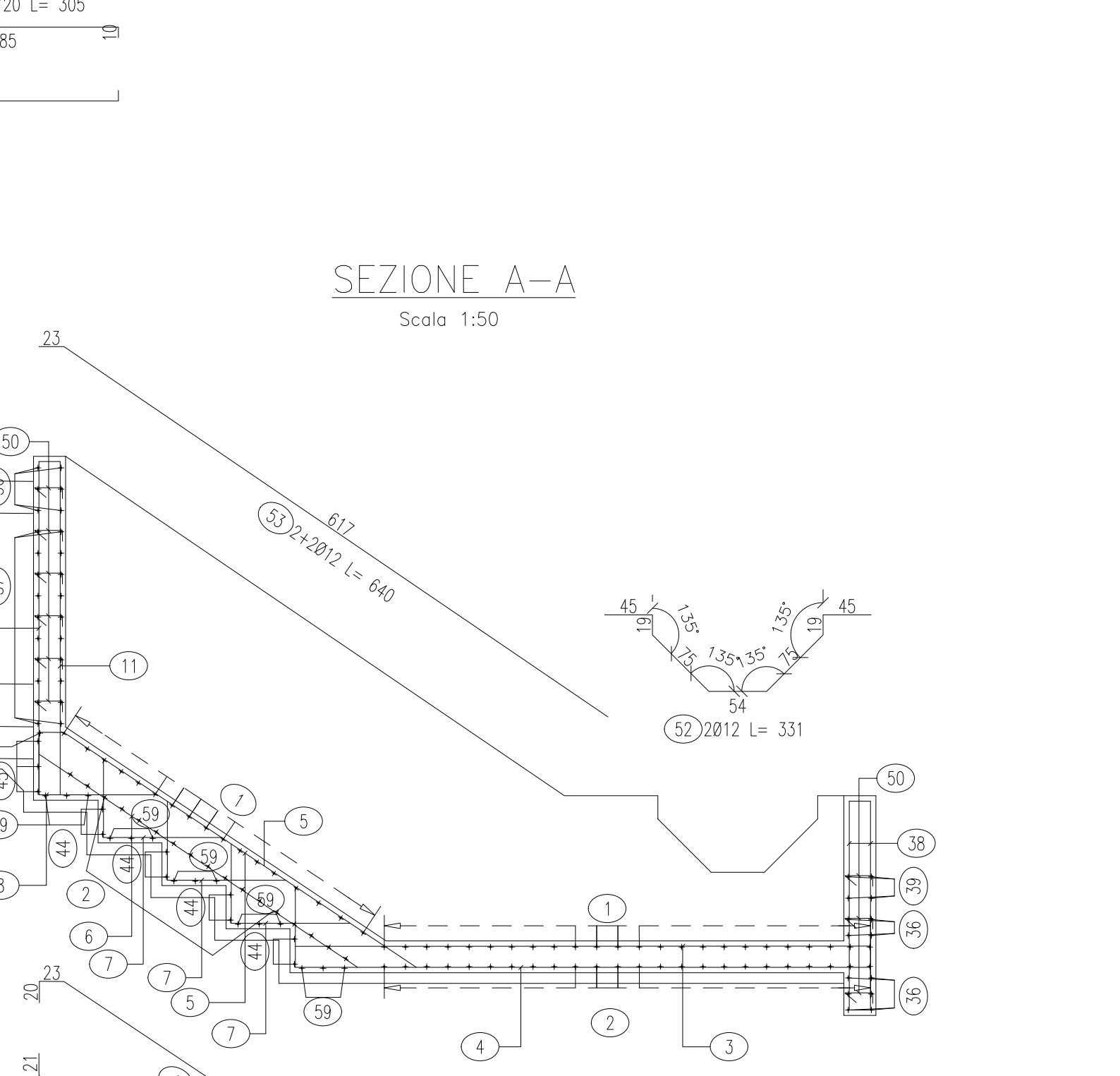
PIANTA SPICCATO



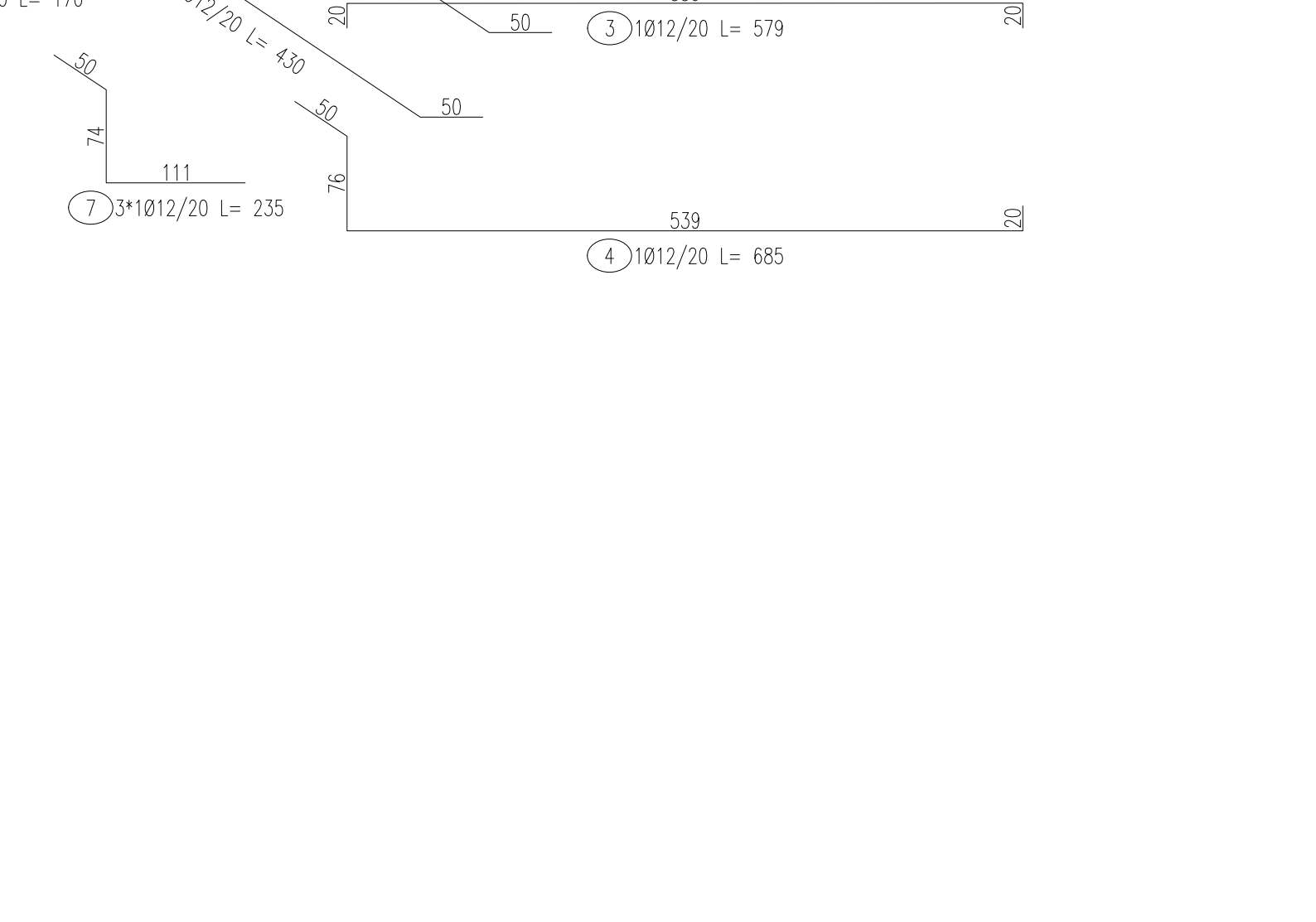
SEZIONE A-A



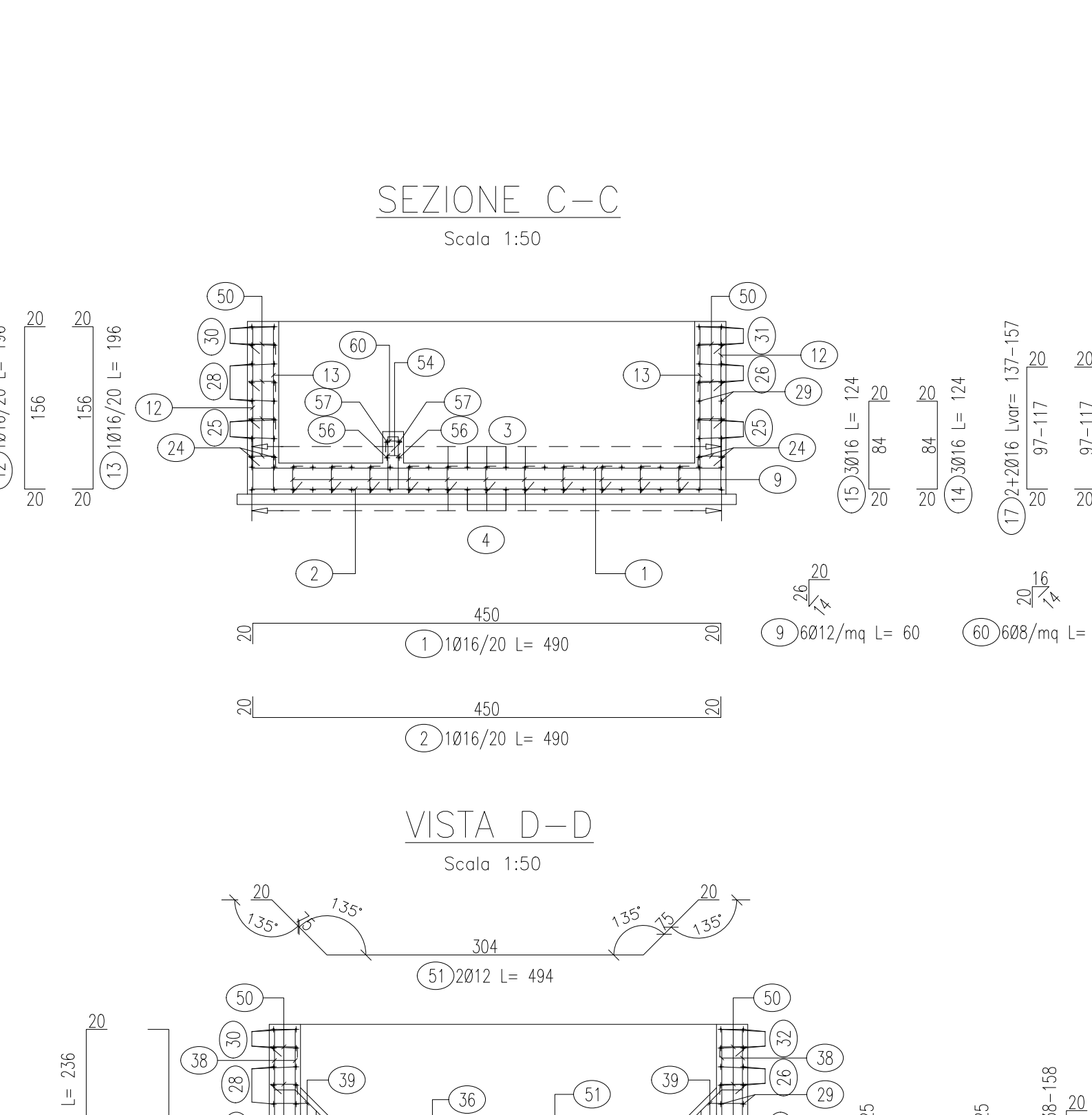
ARMATURA MURO DI USCITA



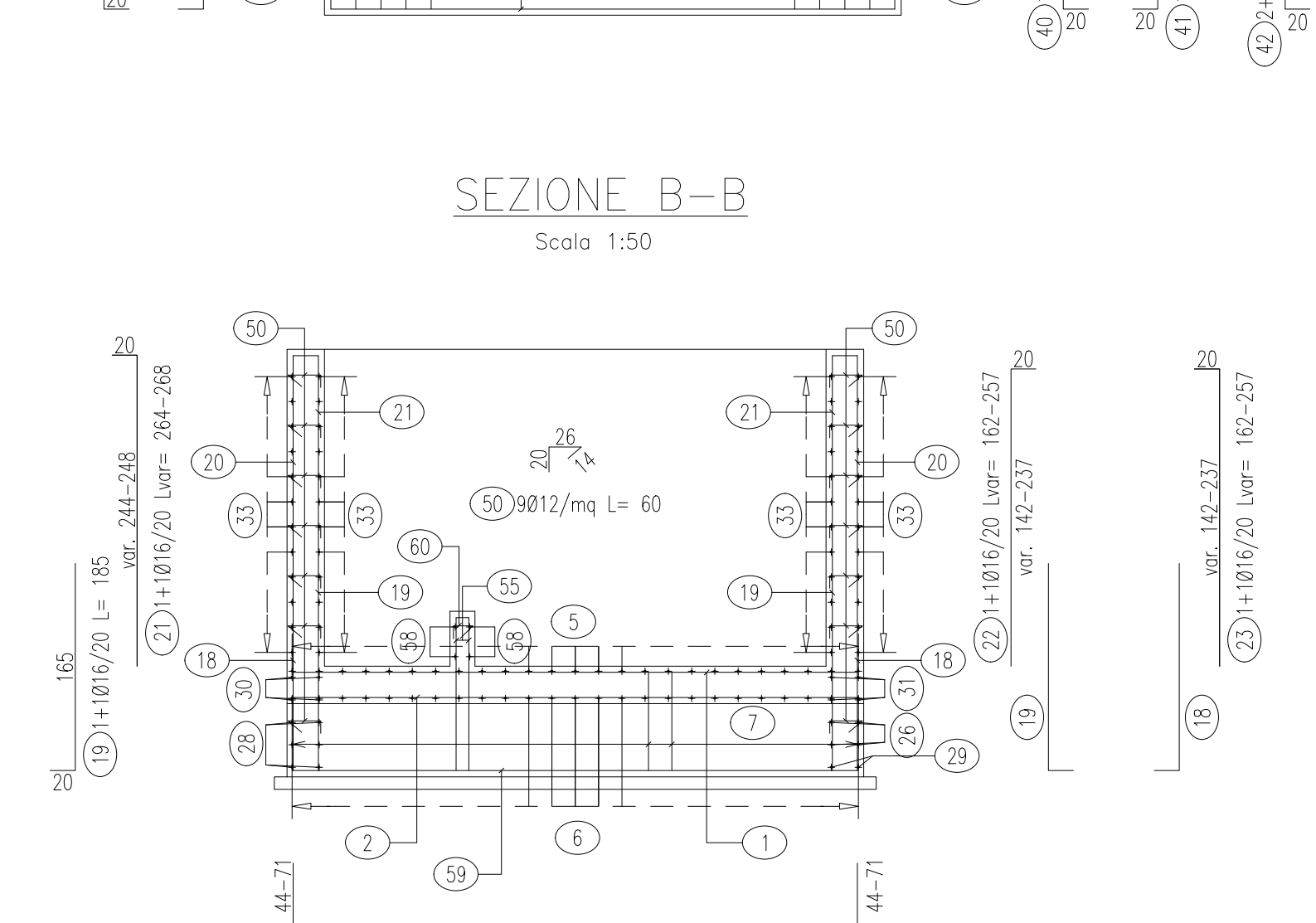
SEZIONE A-A



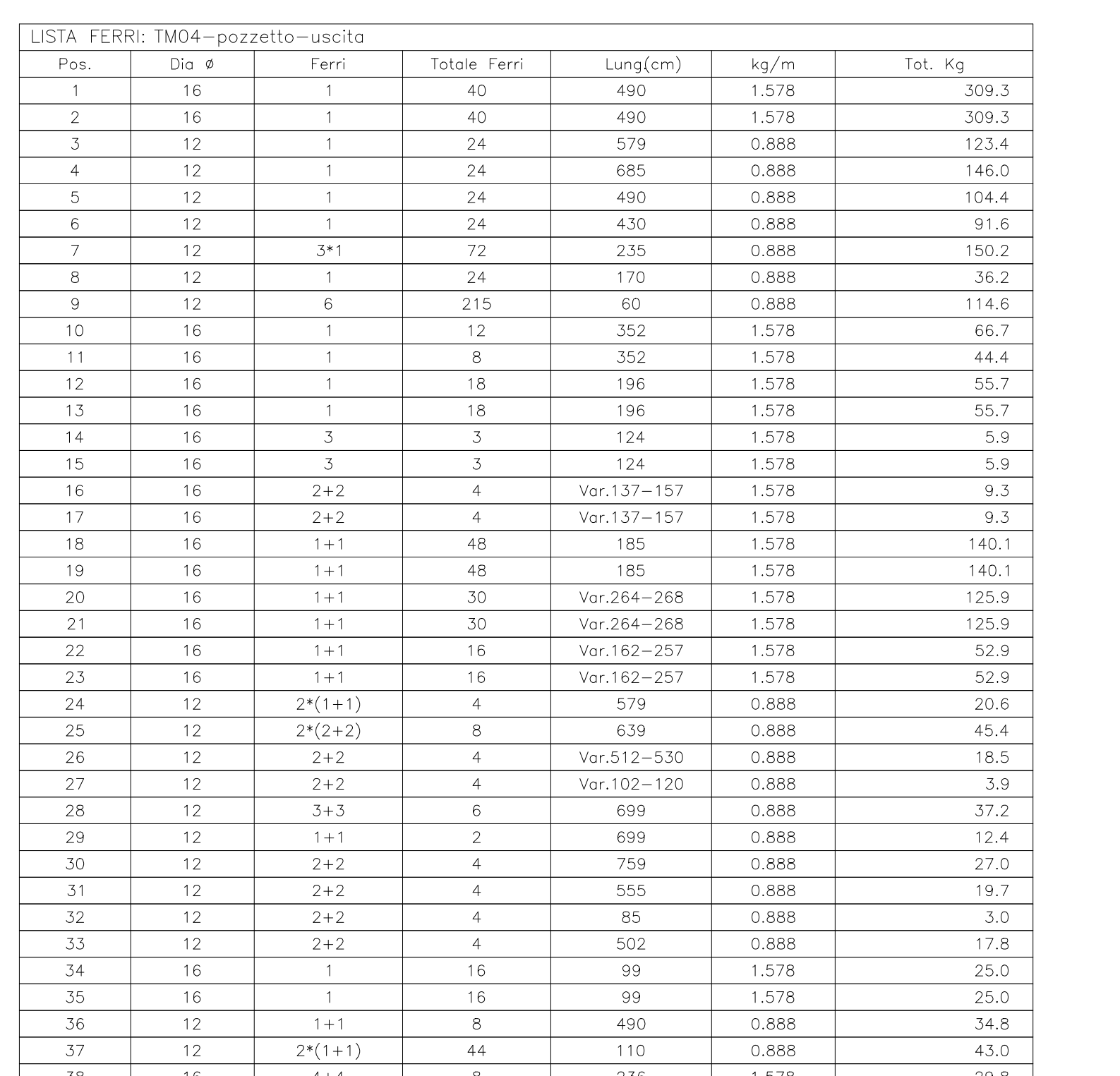
PIANTA SPICCATO



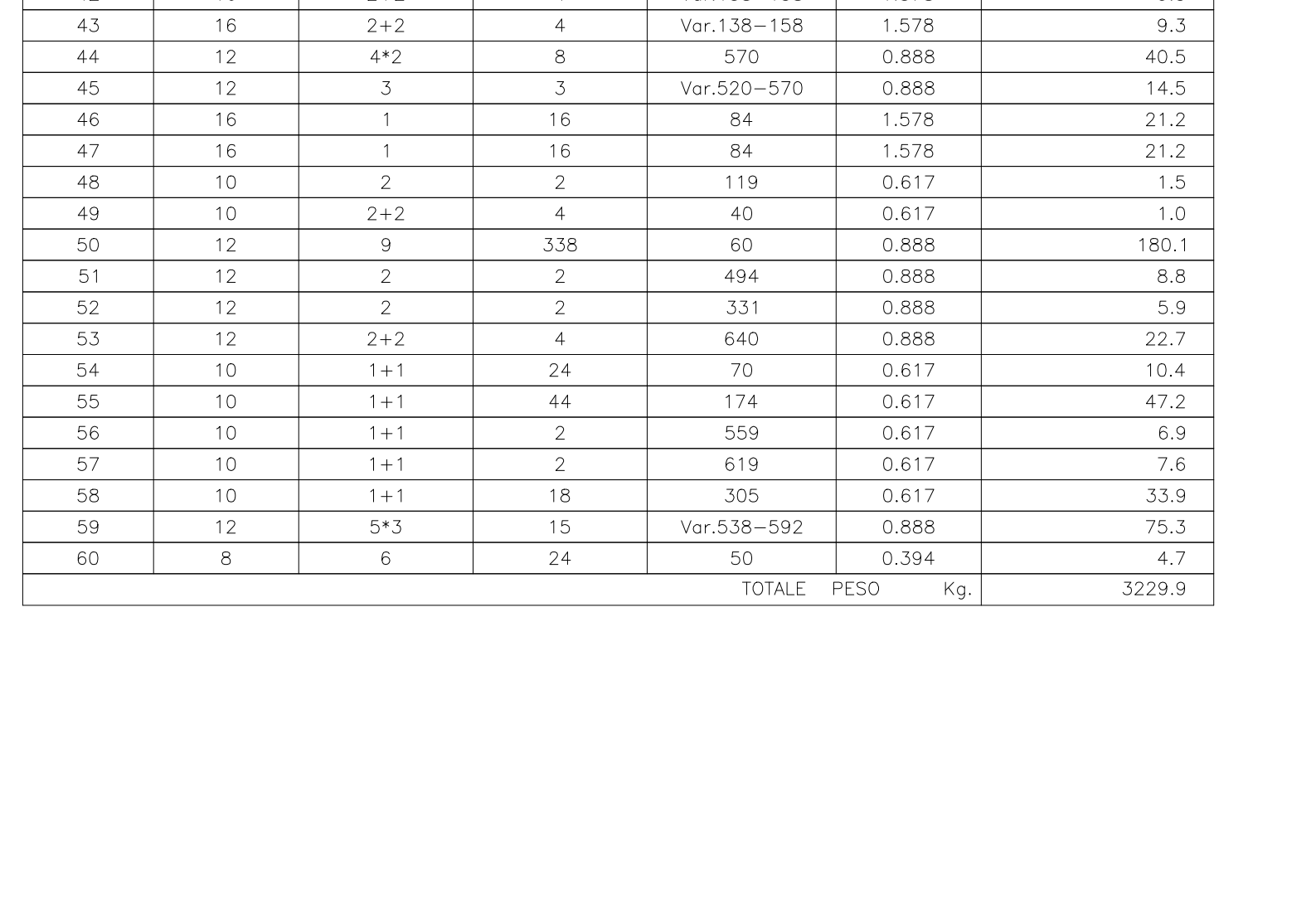
SEZIONE C-C



ARMATURA MURO DI USCITA



SEZIONE B-B

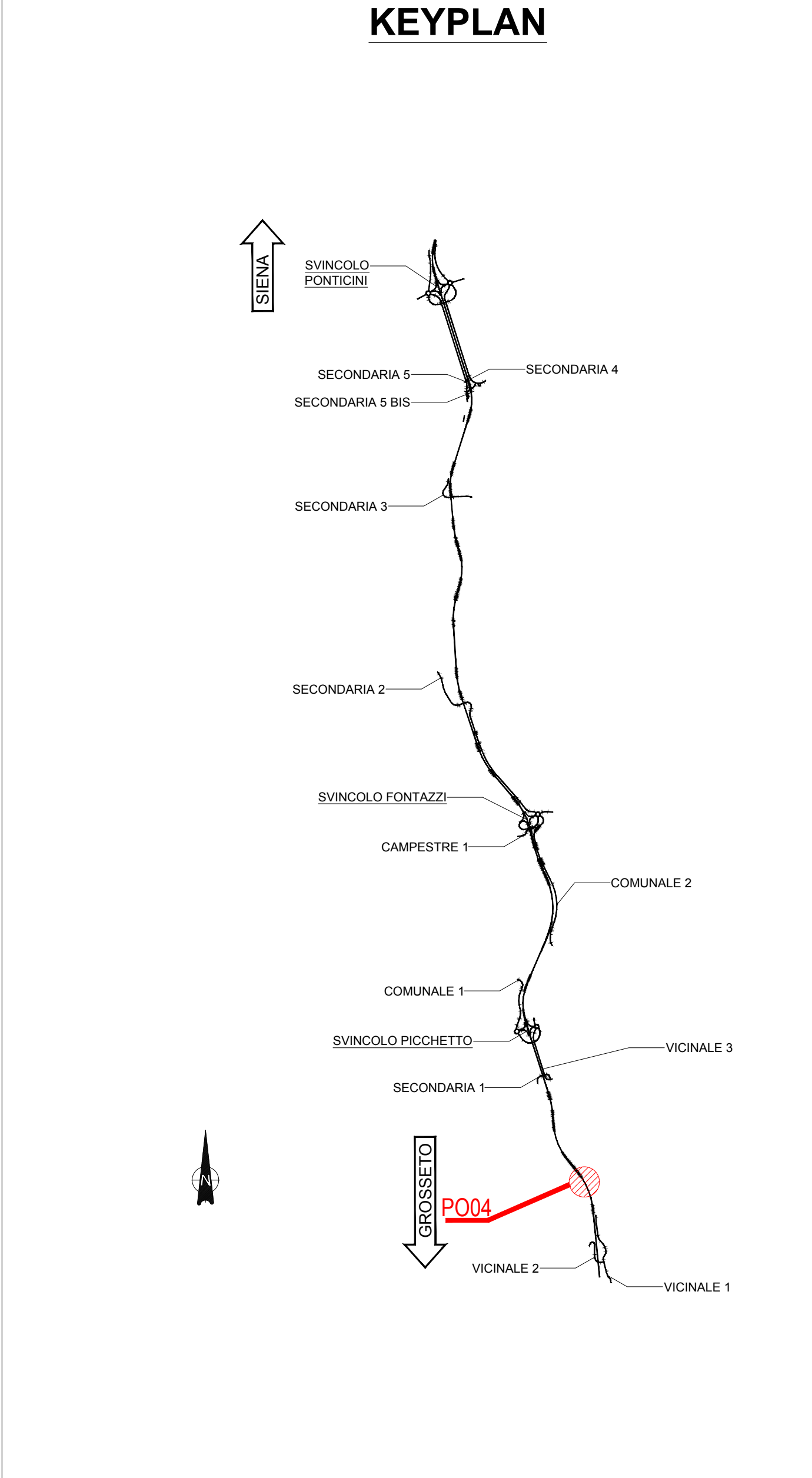


SEZIONE C-C



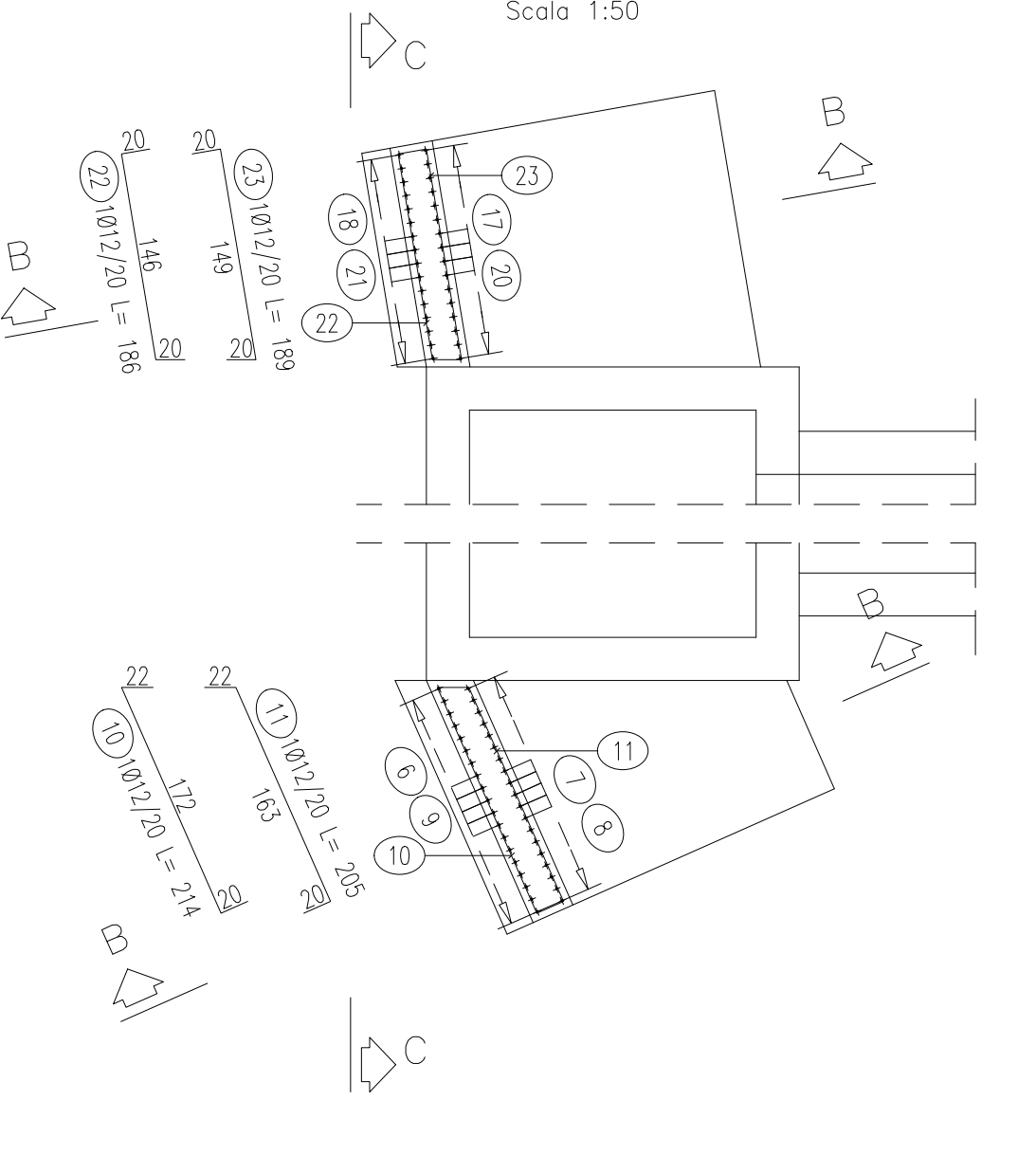
Pos.	Dià #	Ferri	Totale Ferri	Lung.(cm)	kg/m	Tot. Kg
1	16	1	40	490	1.578	309.3
2	16	1	40	490	1.578	309.3
3	12	1	24	579	0.888	123.4
4	12	1	24	685	0.888	146.0
5	12	1	24	490	0.888	104.4
6	12	1	24	430	0.888	91.6
7	12	3*1	72	235	0.888	150.2
8	12	1	24	170	0.888	36.2
9	12	6	215	60	0.888	114.6
10	16	1	12	352	1.578	66.7
11	16	1	8	352	1.578	44.4
12	16	1	18	196	1.578	55.7
13	16	1	18	196	1.578	55.7
14	16	3	3	124	1.578	5.9
15	16	3	3	124	1.578	5.9
16	16	2+2	4	Var.157-157	1.578	9.3
17	16	2+2	4	Var.137-157	1.578	9.3
18	16	1+1	48	185	1.578	140.1
19	16	1+1	48	185	1.578	140.1
20	16	1+1	30	Var.264-268	1.578	125.9
21	16	1+1	30	Var.264-268	1.578	125.9
22	16	1+1	16	Var.162-257	1.578	52.9
23	16	1+1	16	Var.162-257	1.578	52.9
24	12	2*(1+1)	4	579	0.888	20.6
25	12	2*(1+2)	8	639	0.888	45.4
26	12	2+2	4	Var.512-530	0.888	18.5
27	12	2+2	4	Var.102-120	0.888	3.9
28	12	3+3	6	699	0.888	37.2
29	12	1+1	2	699	0.888	12.4
30	12	2+2	4	729	0.888	27.0
31	12	2+2	4	555	0.888	19.7
32	12	2+2	4	85	0.888	3.0
33	12	1+1	4	503	0.888	17.8
34	16	1	16	99	1.578	25.0
35	16	1	16	99	1.578	25.0
36	12	1+1	8	490	0.888	34.8
37	12	2*(1+1)	44	110	0.888	43.0
38	16	4+4	8	236	1.578	29.8
39	12	2*(1+2)	8	Var.75-93	0.888	5.9
40	16	1	16	125	1.578	31.6
41	16	1	16	125	1.578	31.6
42	16	2+2	4	Var.136-158	1.578	9.3
43	16	2+2	4	Var.136-158	1.578	9.3
44	12	4+2	6	570	0.888	42.5
45	12	3	3	Var.520-570	0.888	14.5
46	16	1	16	84	1.578	21.2
47	16	1	16	84	1.578	21.2
48	10	2	2	119	0.617	1.5
49	10	2+2	4	49	0.617	1.0
50	12	9	358	60	0.888	180.1
51	12	2	2	494	0.888	8.8
52	12	2	2	331	0.888	5.9
53	12	2+2	4	640	0.888	22.7
54	10	1+1	24	70	0.617	10.4
55	10	1+1	44	174	0.617	47.2
56	10	1+1	2	559	0.617	6.9
57	10	1+1	2	619	0.617	7.6
58	10	1+1	18	305	0.617	33.9
59	12	3+3	15	Var.516-592	0.888	75.3
60	8	6	24	50	0.394	4.7
TOTALE PESO					Kg.	3229.9

KEYPLAN

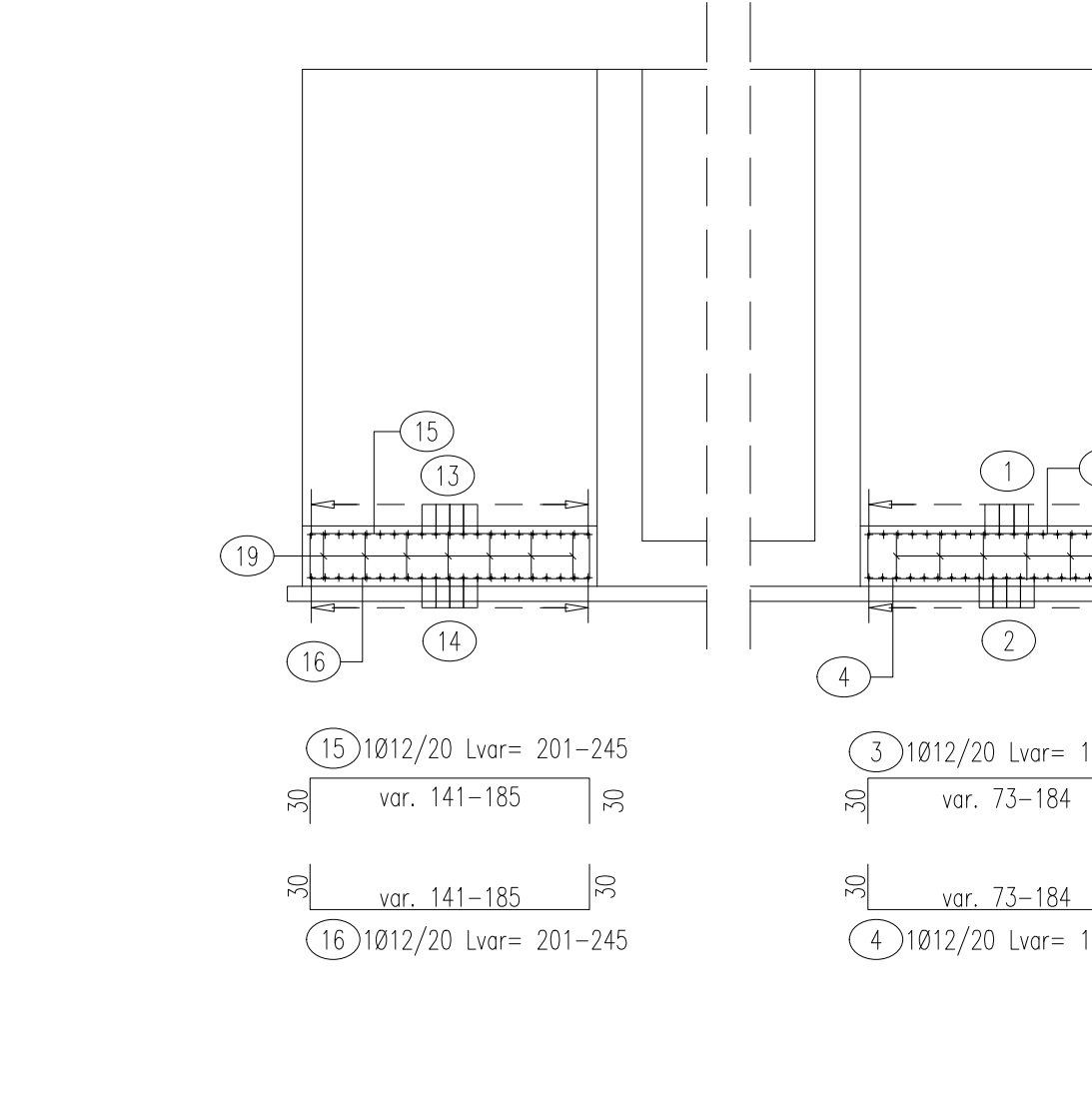


NOTE GENERALI
 - TUTTE LE MISURE SONO ESPRESSE IN CENTIMETRI, SALVO OVE DIVERSAMENTE INDICATO
 - PER LE CARATTERISTICHE DEI MATERIALI FARE RIFERIMENTO ALL'ELABORATO T00-OIOO-STR-SC01
 - PER LE INALVEAZIONI E I RECAPITI FARE RIFERIMENTO ALLE PLANIMETRICHE IDRAULICHE

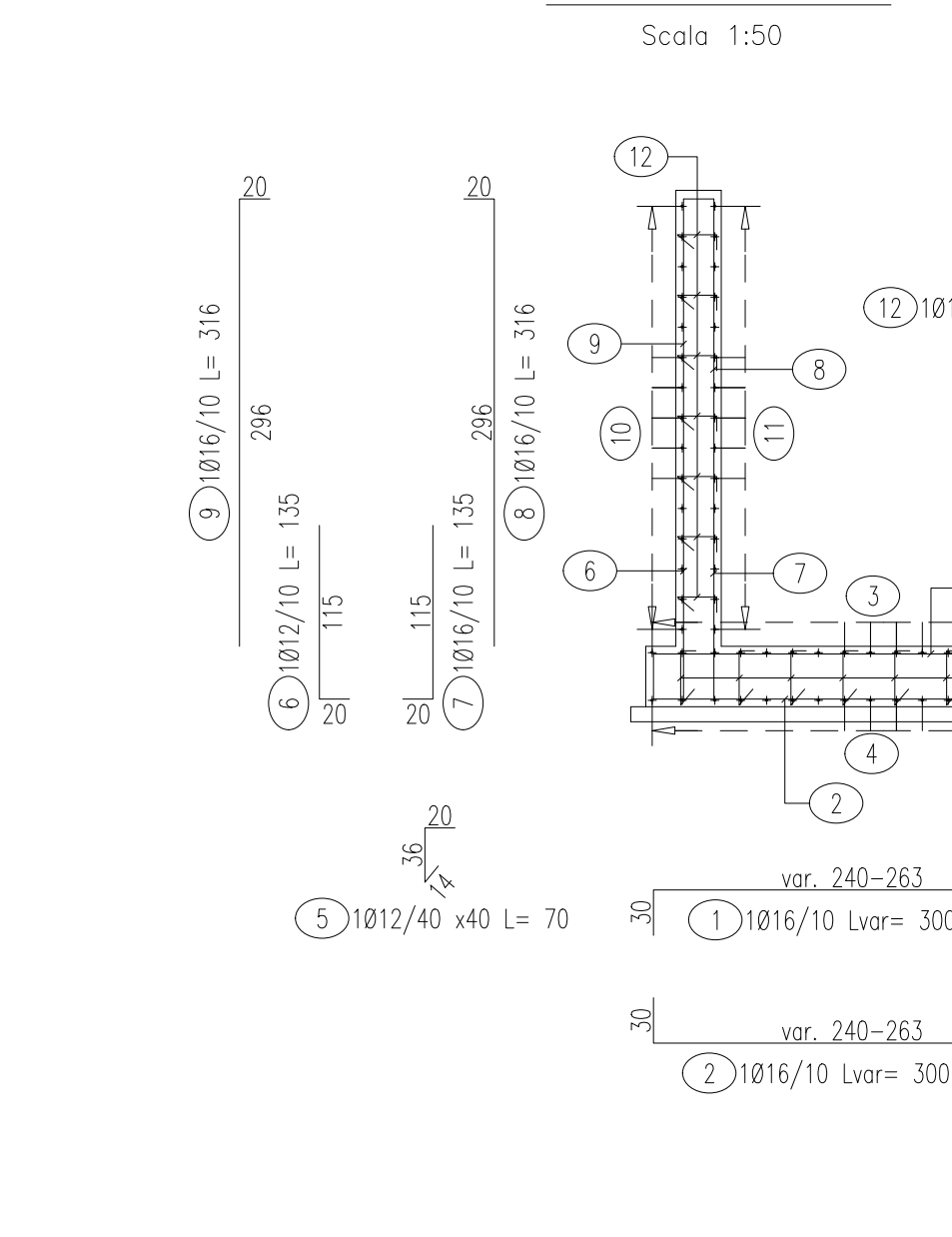
PIANTA SPICCATO



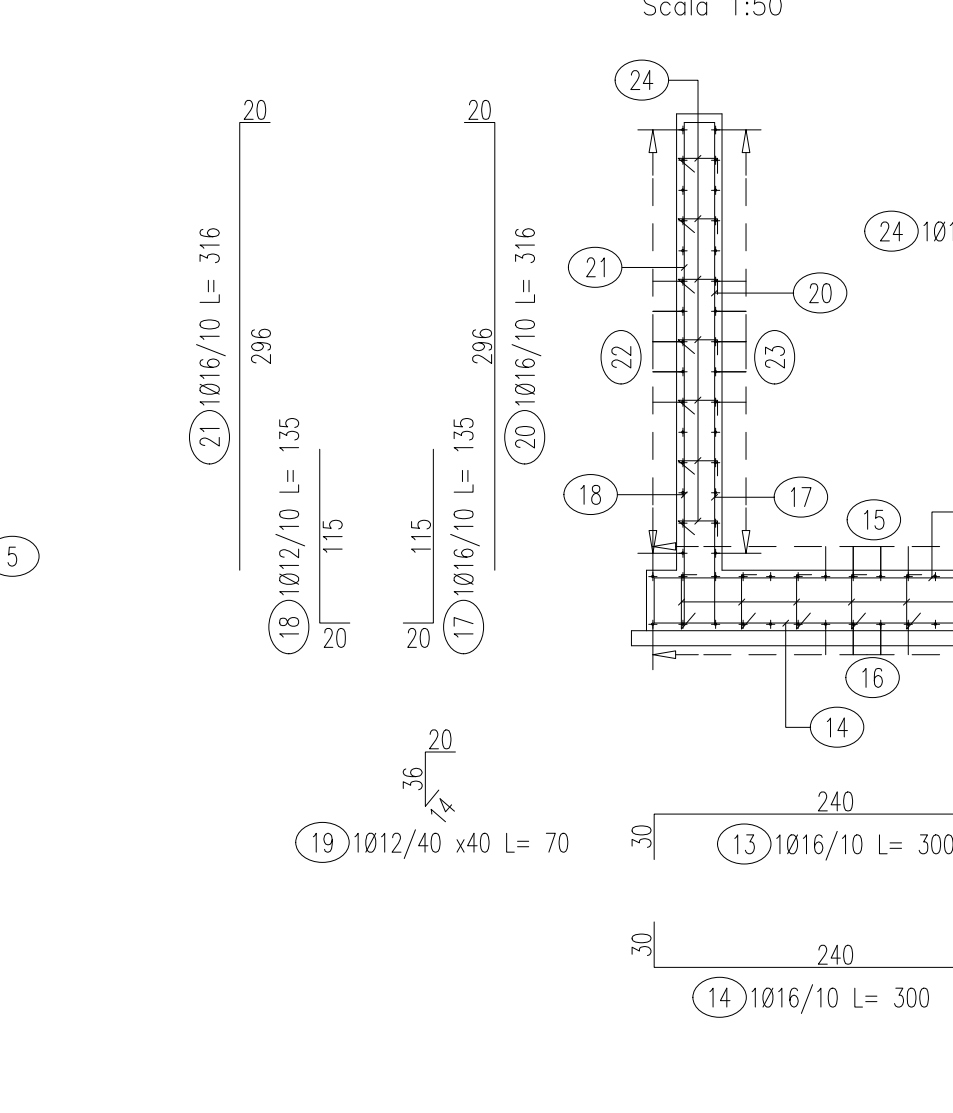
SEZIONE C-C



SEZIONE A-A



SEZIONE B-B



Sanas GRUPPO FS ITALIANI
 Direzione Progettazione e Realizzazione Lavori

ITINERARIO INTERNAZIONALE E78
S.G.C. GROSSETO - FANO
 ADEGUAMENTO A 4 CORSIE
 NEL TRATTO GROSSETO - SIENA (S.S. 223 "DI PAGANICO")
 DAL KM 41+600 AL KM 53+400 - LOTTO 9

PROGETTO ESECUTIVO COD. FI15

PROGETTAZIONE: ATI SINTAGMA-GDG-ICARIA
 RESPONSABILE DELL'INTERAGENZIA DELLE PRESSIONI SPECIALISTICHE: SINTAGMA
 MANIPOLAZIONE: ICARIA

IL GRUPPO DI PROGETTAZIONE: SINTAGMA, GDG, ICARIA
 AMMINISTRATORI: SINTAGMA, GDG, ICARIA

IL PROGETTISTA: SINTAGMA, GDG, ICARIA
 IL COORDINATORE PER LA SICUREZZA IN FASE DI PROGETTAZIONE: SINTAGMA, GDG, ICARIA

OPERE DI ATTRAVERSAMENTO IDRAULICO
 TOMBINO P04
 Armature - Tav. 2 di 2

CODICE PROGETTO: L0F115 E 1901
 NONHE FILE: T00-TM04-STR-AR02
 REVISIONE: A
 SCALA: 1:50

PROTOCOLLO: DATA

REVISIONE: A
 Emissione: 25/02/2019
 DESCRIZIONE: DATA, REDATTO, VERIFICATO, APPROVATO