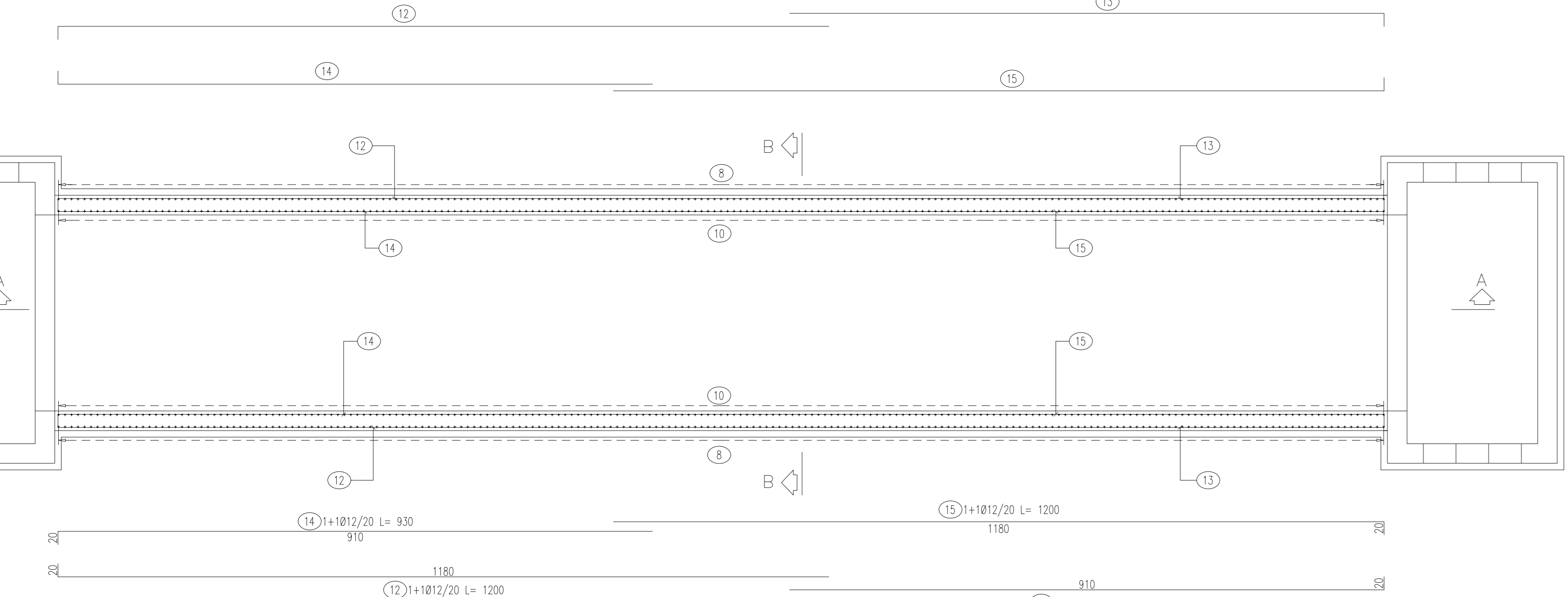


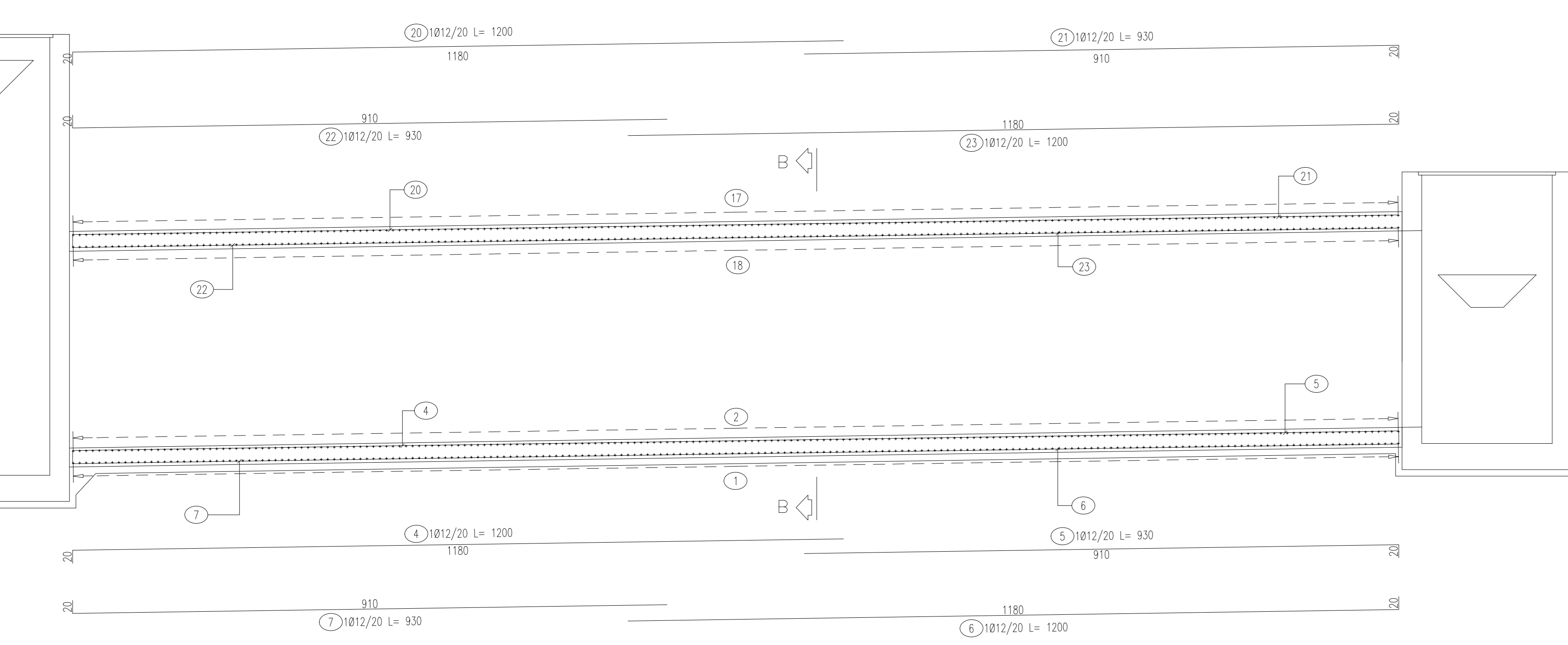
PIANTA SPICCATO

Scala 1:50



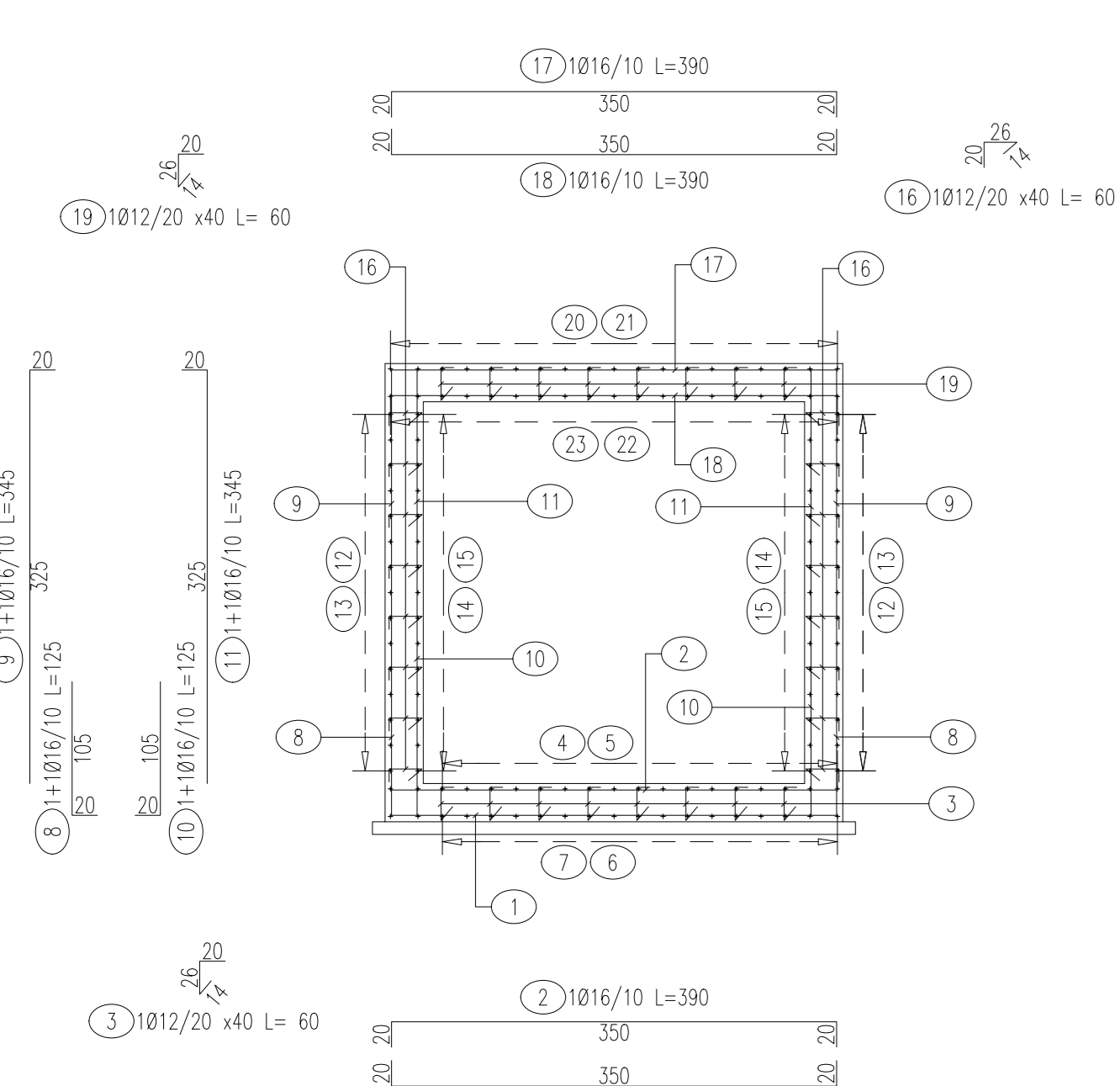
SEZIONE A-A

Scala 1:50



SEZIONE B-B

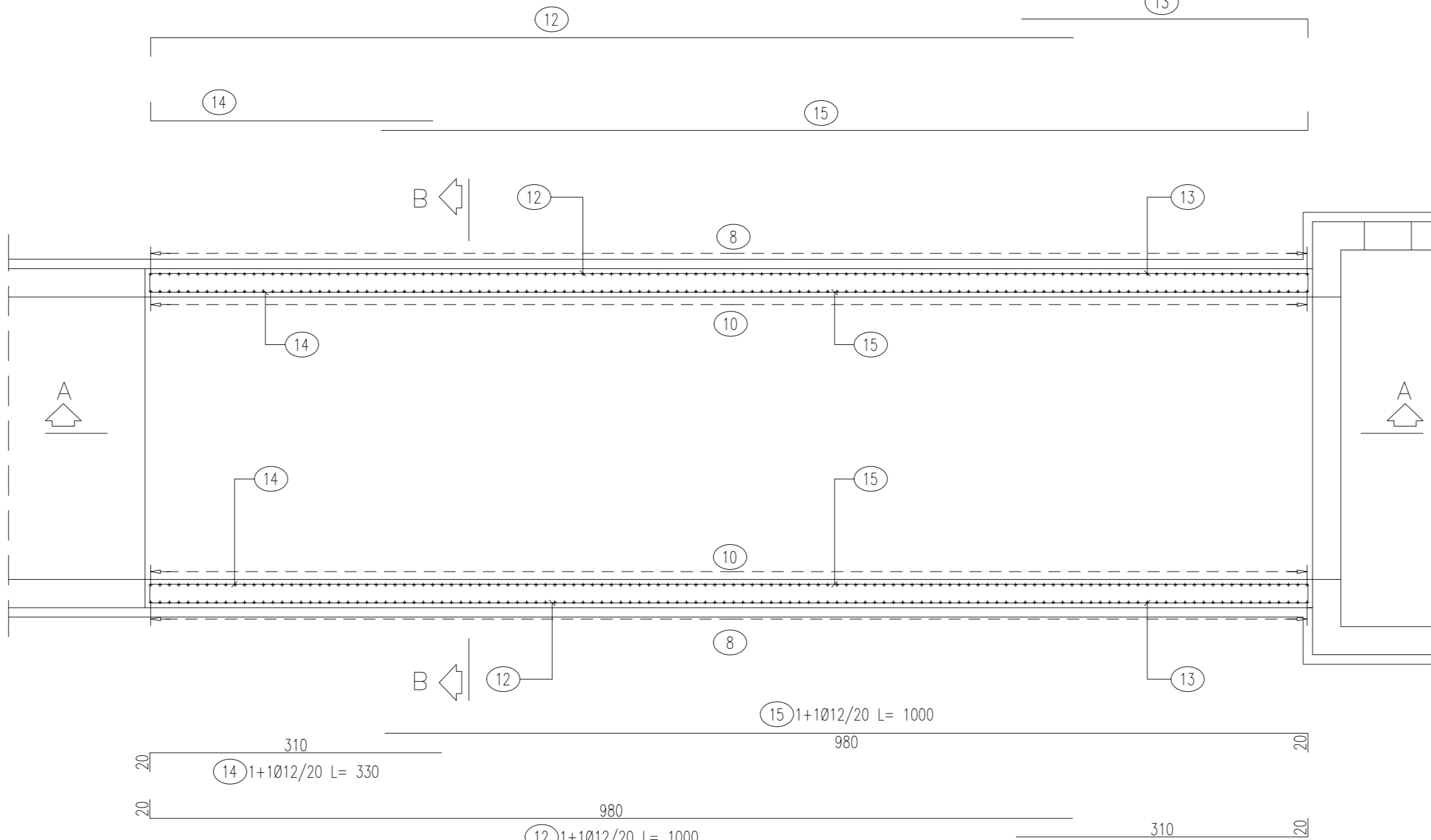
Scala 1:50



Pos.	Dia #	Ferri	Totale Ferri	Lung(cm)	kg/m	Tot. Kg
1	16	1	205	390	1.578	1261.6
2	16	1	205	390	1.578	1261.6
3	12	1	918	60	0.888	489.1
4	12	1	19	1200	0.888	202.5
5	12	1	19	930	0.888	156.9
6	12	1	19	1200	0.888	202.5
7	12	1	19	930	0.888	156.9
8	16	1+1	410	125	1.578	808.7
9	16	1+1	410	345	1.578	2232.1
10	16	1+1	410	125	1.578	808.7
11	16	1+1	410	345	1.578	2232.1
12	12	1+1	32	1200	0.888	541.0
13	12	1+1	32	930	0.888	284.3
14	12	1+1	32	930	0.888	284.3
15	12	1+1	32	1200	0.888	541.0
16	12	1	1530	60	0.888	815.2
17	16	1	205	390	1.578	1261.6
18	16	1	205	390	1.578	1261.6
19	12	1	918	60	0.888	489.1
20	12	1	19	1200	0.888	202.5
21	12	1	19	930	0.888	156.9
22	12	1	19	930	0.888	156.9
23	12	1	19	1200	0.888	202.5
TOTALE PESO Kg						15969.3

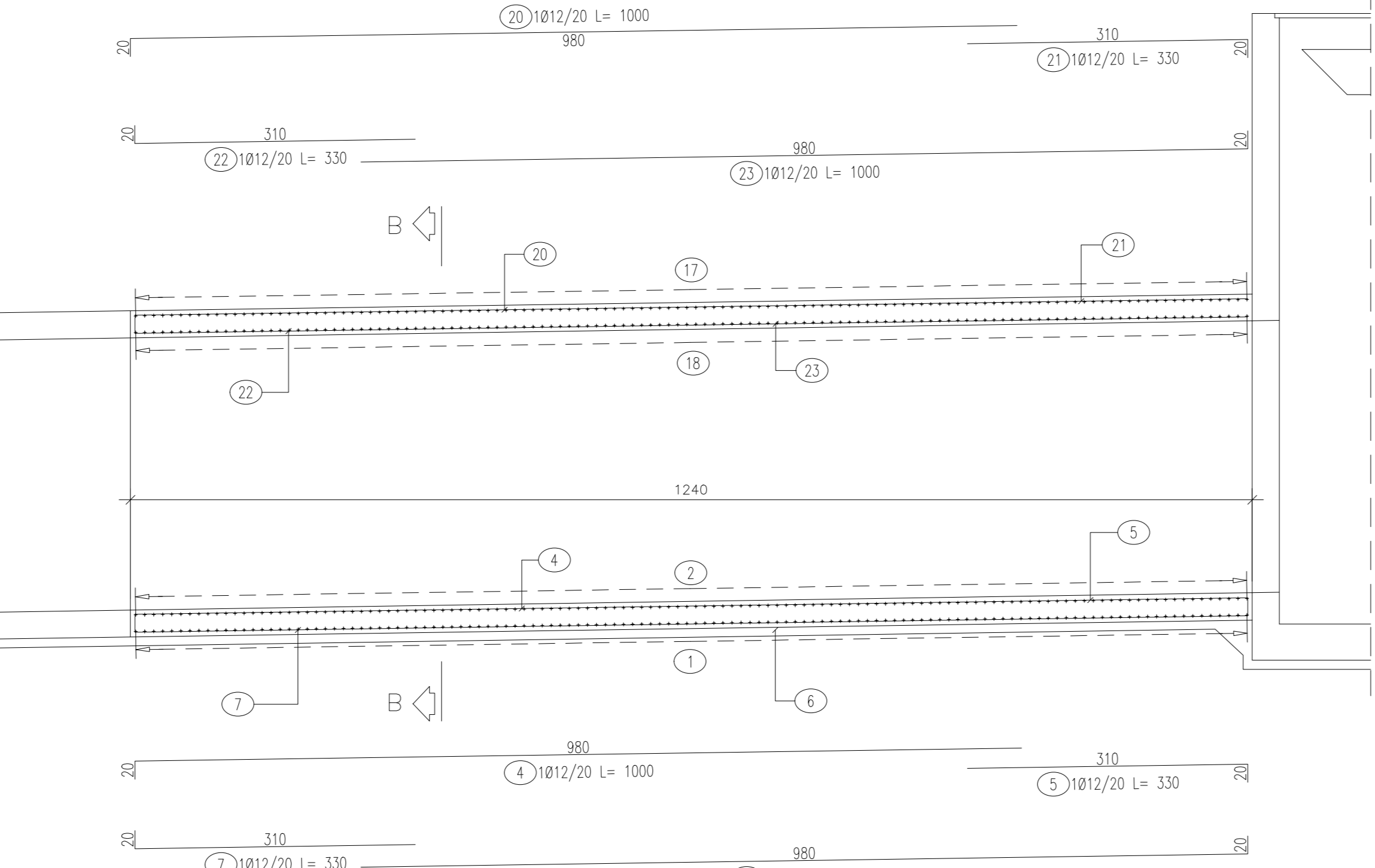
PIANTA SPICCATO

Scala 1:50



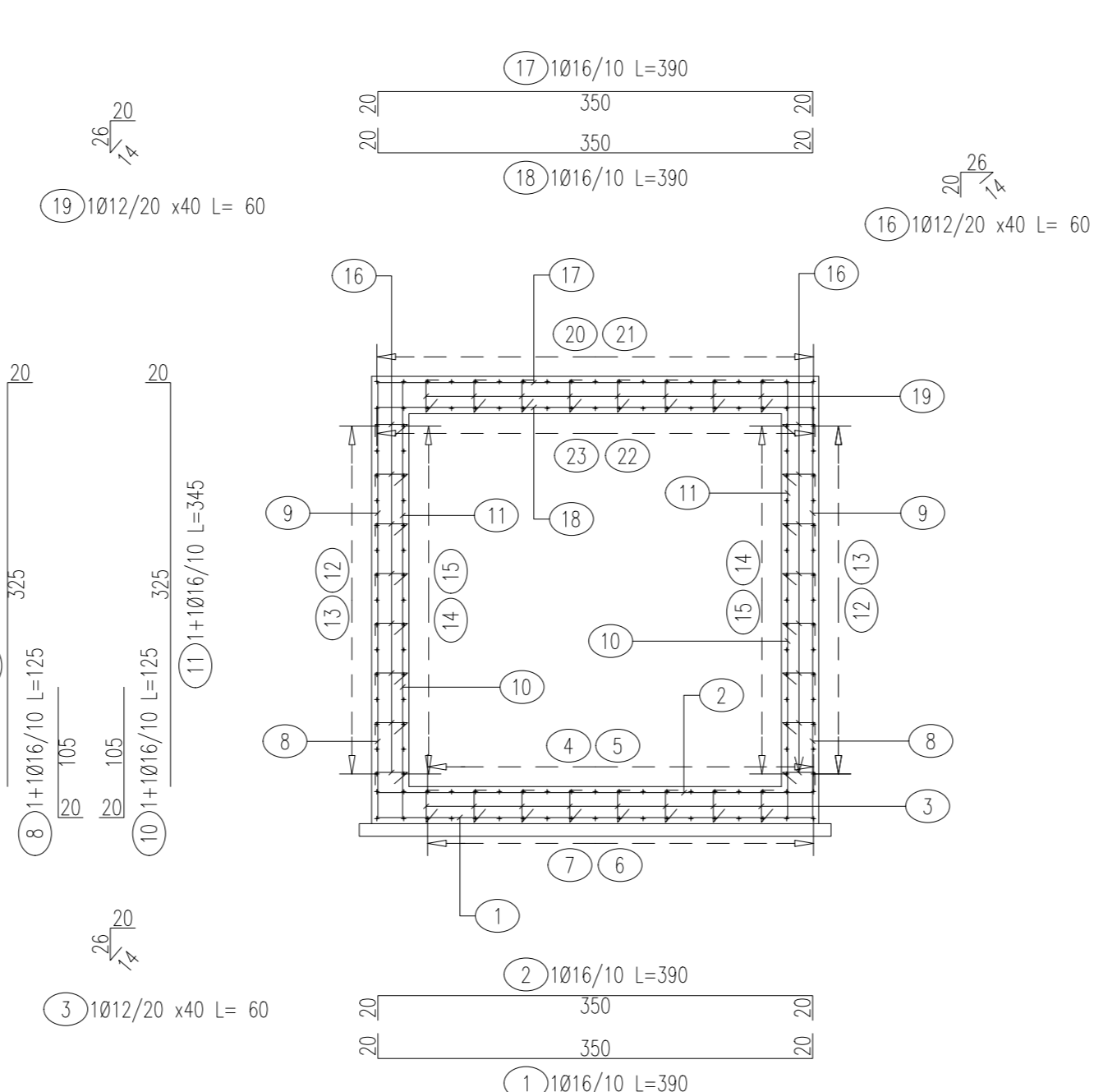
SEZIONE A-A

Scala 1:50



SEZIONE B-B

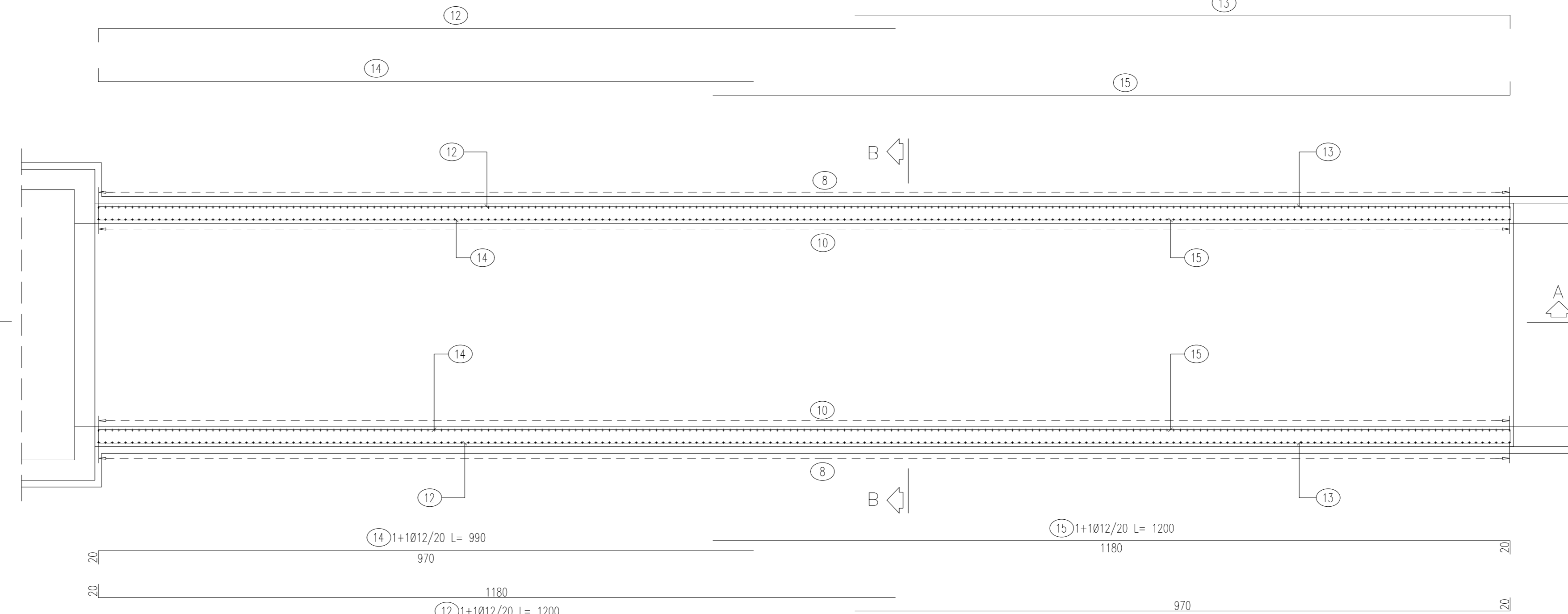
Scala 1:50



Pos.	Dia #	Ferri	Totale Ferri	Lung(cm)	kg/m	Tot. Kg
1	16	1	125	390	1.578	769.3
2	16	1	125	390	1.578	769.3
3	12	1	358	60	0.888	297.3
4	12	1	19	1000	0.888	168.7
5	12	1	19	320	0.888	54.0
6	12	1	19	1000	0.888	168.7
7	12	1	19	320	0.888	54.0
8	16	1+1	250	125	1.578	493.1
9	16	1+1	250	345	1.578	1361.0
10	16	1+1	250	125	1.578	493.1
11	16	1+1	250	345	1.578	1361.0
12	12	1+1	32	1000	0.888	284.2
13	12	1+1	32	320	0.888	90.9
14	12	1+1	32	320	0.888	90.9
15	12	1+1	32	1000	0.888	284.2
16	12	1	930	60	0.888	493.5
17	16	1	125	390	1.578	769.3
18	16	1	125	390	1.578	769.3
19	12	1	358	60	0.888	297.3
20	12	1	19	1000	0.888	168.7
21	12	1	19	320	0.888	54.0
22	12	1	19	320	0.888	54.0
23	12	1	19	1000	0.888	168.7
TOTALE PESO Kg						9516.5

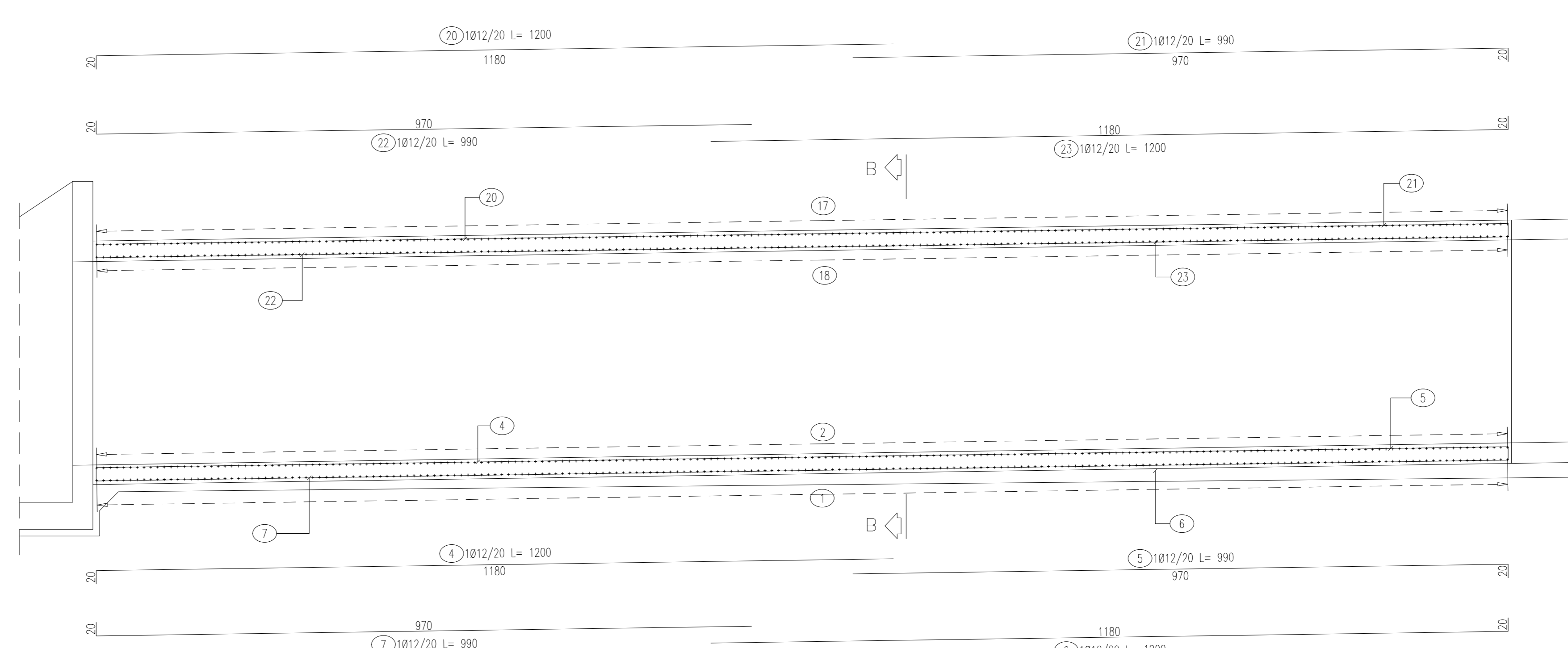
PIANTA SPICCATO

Scala 1:50



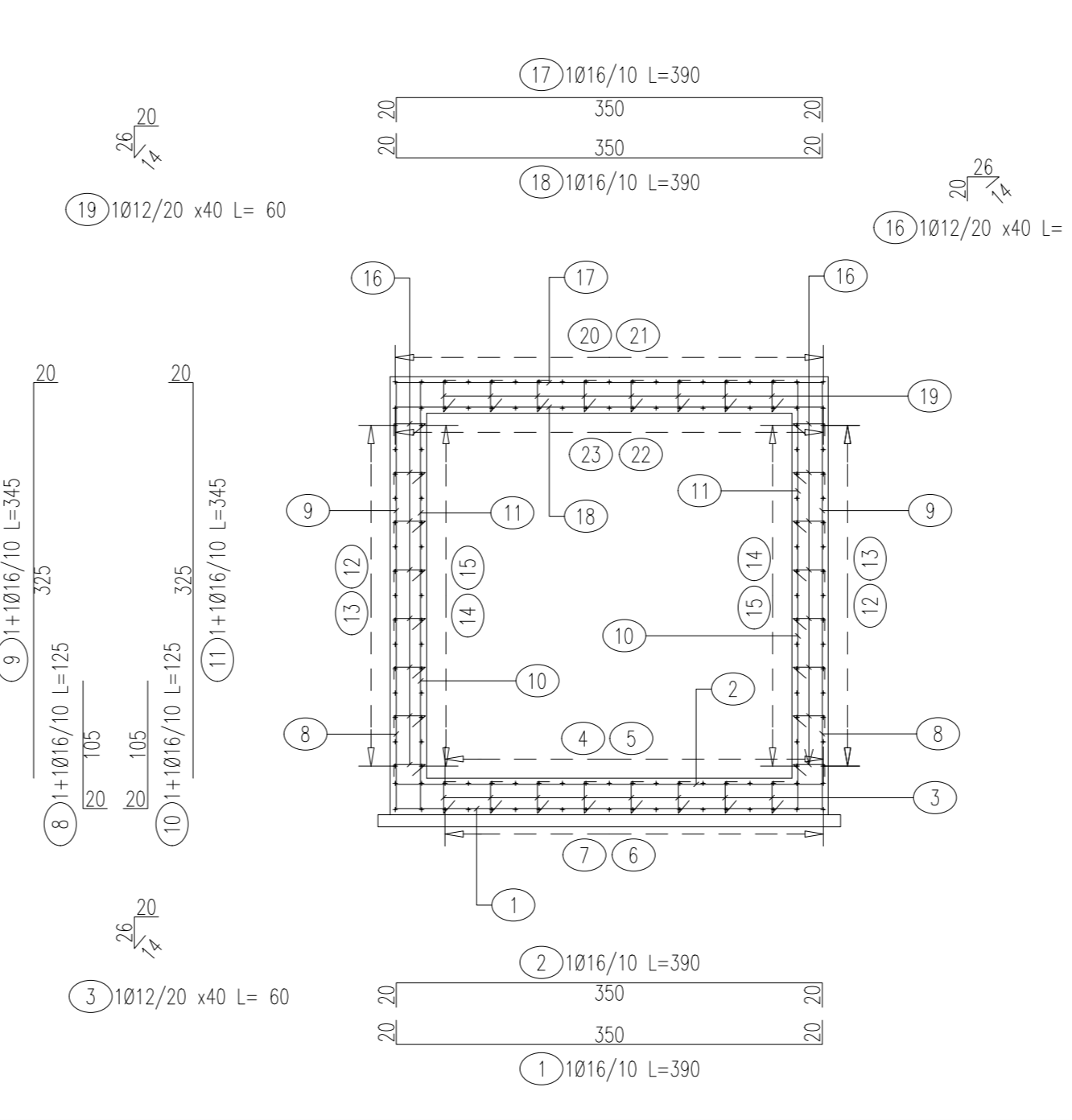
SEZIONE A-A

Scala 1:50



SEZIONE B-B

Scala 1:50



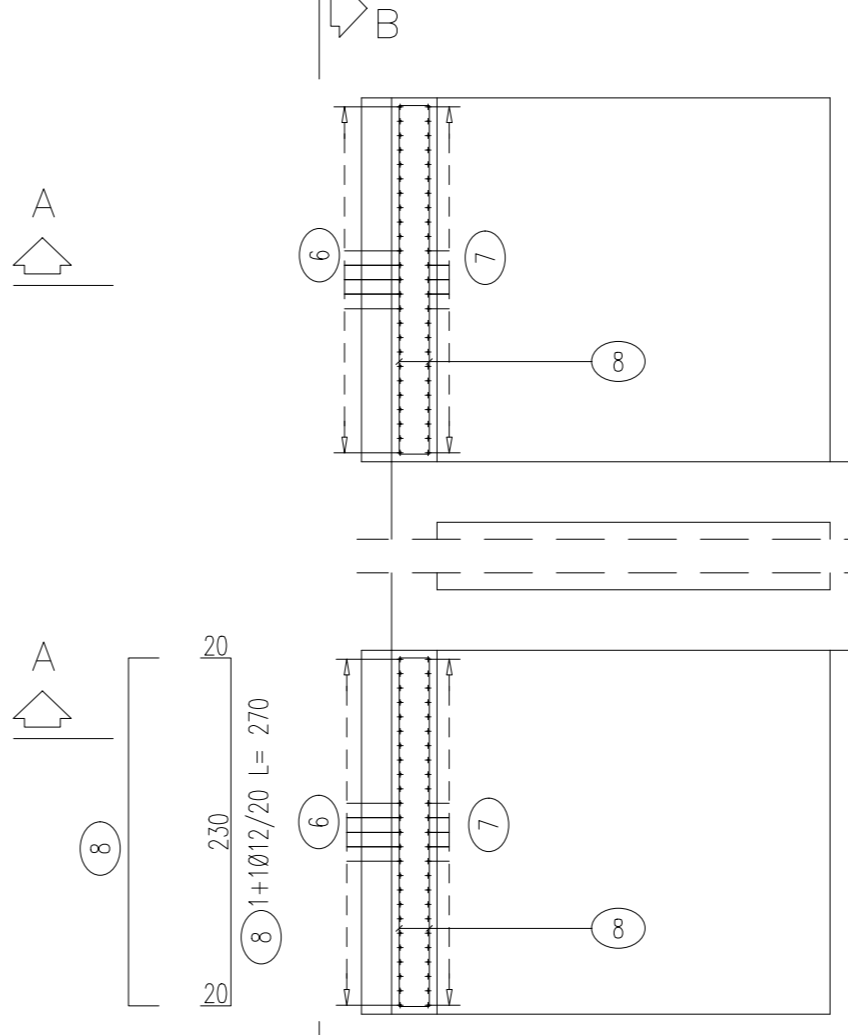
Pos.	Dia #	Ferri	Totale Ferri	Lung(cm)	kg/m	Tot. Kg
1	16	1	210	390	1.578	1292.4
2	16	1	210	390	1.578	1292.4
3	12	1	843	60	0.888	503.5
4	12	1	19	1200	0.888	202.5
5	12	1	19	990	0.888	167.0
6	12	1	19	1200	0.888	202.5
7	12	1	19	990	0.888	167.0
8	16	1+1	420	125	1.578	828.5
9	16	1+1	420	345	1.578	2286.5
10	16	1+1	420	125	1.578	828.5
11	16	1+1	420	345	1.578	2286.5
12	12	1+1	32	1200	0.888	541.0
13	12	1+1	32	990	0.888	281.3
14	12	1+1	32	990	0.888	281.3
15	12	1+1	32	1200	0.888	541.0
16	12	1	1530	60	0.888	815.2
17	16	1	210	390	1.578	1292.4
18	16	1	210	390	1.578	1292.4
19	12	1	843	60	0.888	503.5
20	12	1	19	1200	0.888	202.5
21	12	1	19	990	0.888	167.0
22	12	1	19	990	0.888	167.0
23	12	1	19	1200	0.888	202.5
TOTALE PESO Kg						15967.7

Pos.	Dia #	Ferri	Totale Ferri	Lung(cm)	kg/m	Tot. Kg
1	16	1	25	355	1.578	144.0
2	16	1	25	355	1.578	144.0
3	12	1	17	300	0.888	45.3
4	12	1	17	300	0.888	45.3
5	12	1	46	70	0.888	28.4
6	12	1	23	243	0.888	49.6
7	16	1	26	243	1.578	89.7
8	12	1+1	36	270	0.888	66.3
9	12	1+1	52	60	0.888	27.7
TOTALE PESO Kg						670.5

N.B: LA TABELLA SI RIFERISCE AL SINGOLO MURO

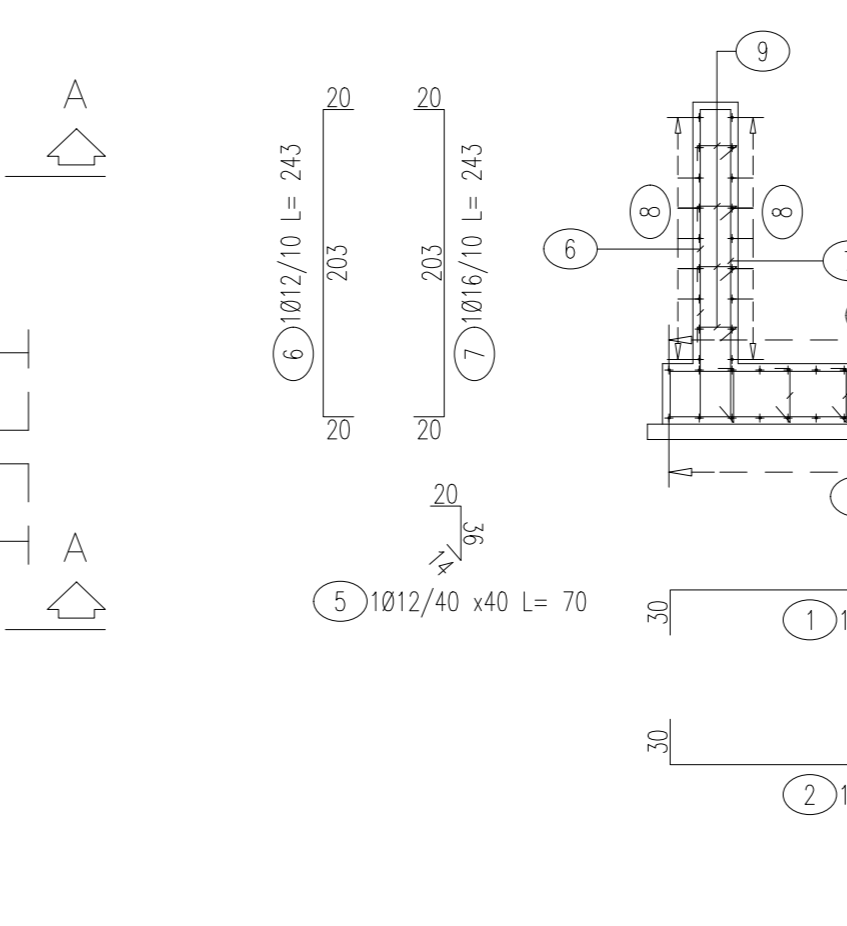
PIANTA SPICCATO

Scala 1:50



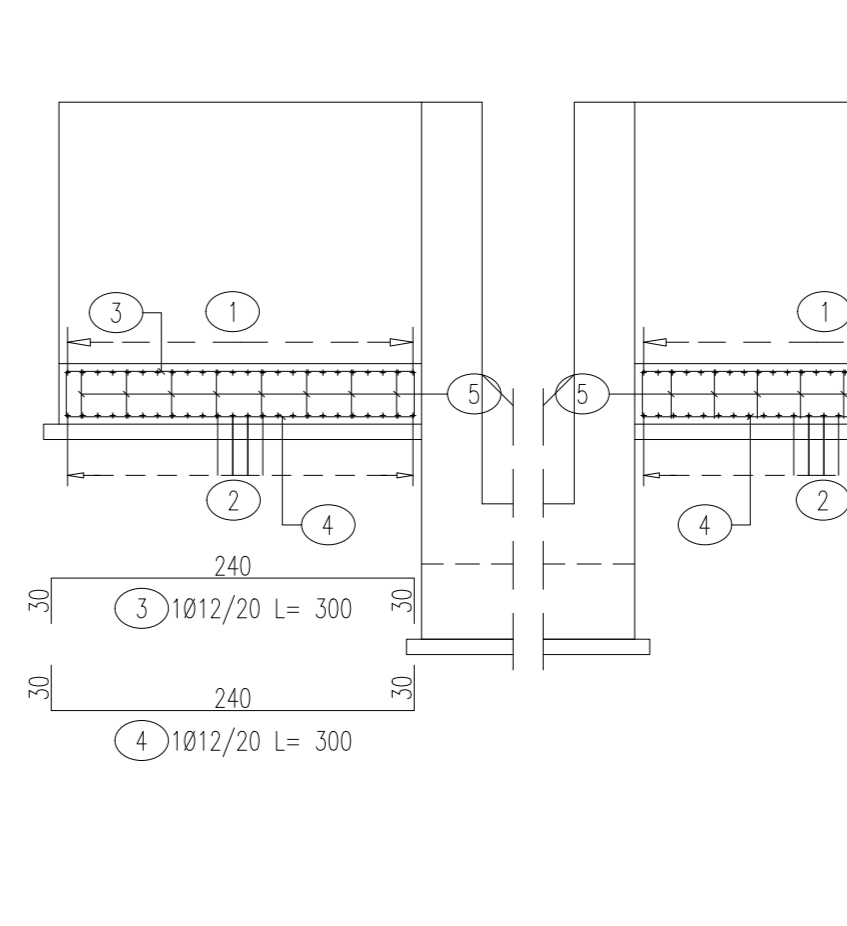
SEZIONE A-A

Scala 1:50

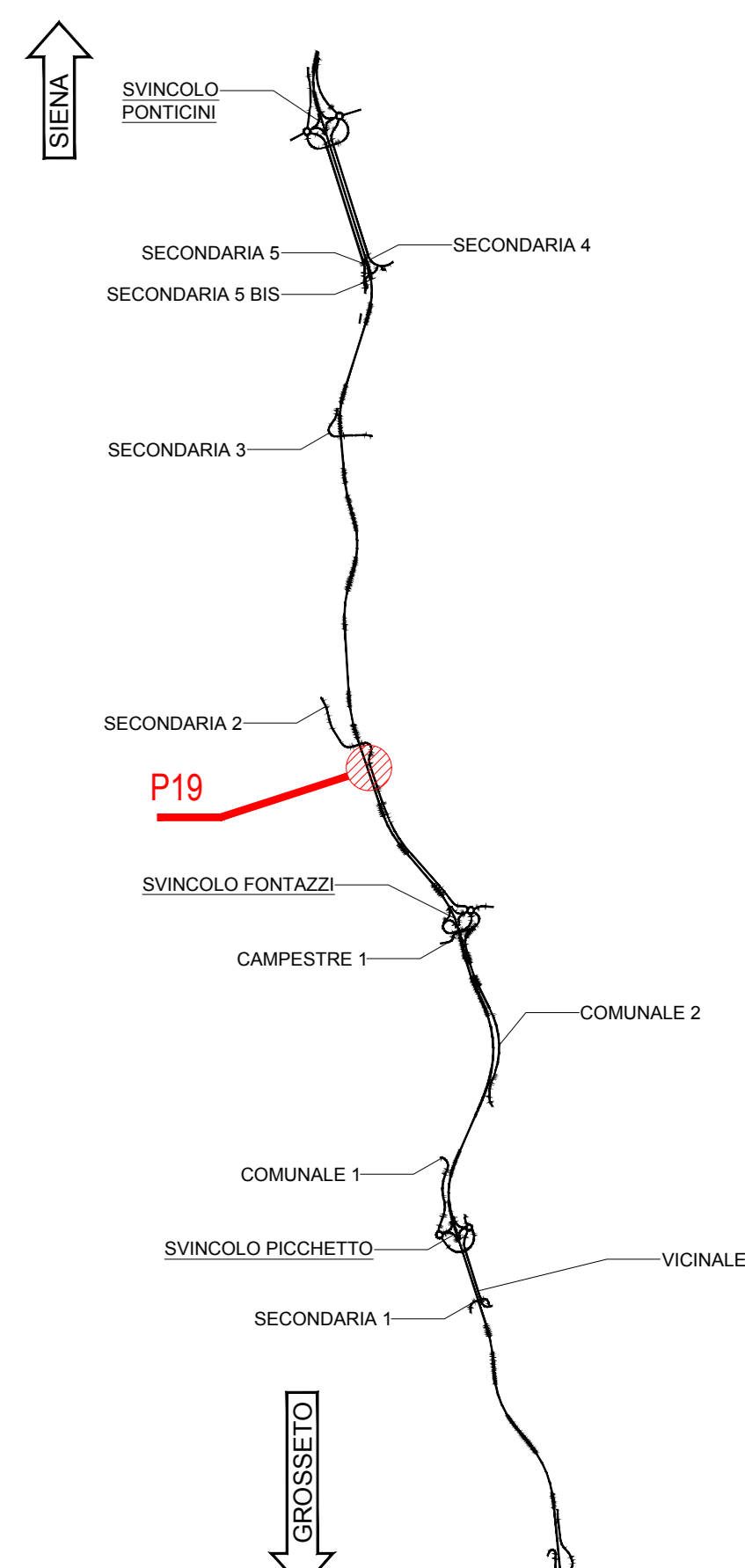


SEZIONE B-B

Scala 1:50



KEYPLAN



NOTE GENERALI

- TUTTE LE MISURE SONO ESPRESSE IN CENTIMETRI, SALVO VUE DIVERSAMENTE INDICATO
- PER LE CARATTERISTICHE DEI MATERIALI FARE RIFERIMENTO ALL'ELABORATO T00-0100-STR-SC01
- PER LE INALZEZIONI E I RECAPITI FARE RIFERIMENTO ALLE PLANIMETRIE IDRAULICHE

Sanas GRUPPO IS ITALIANE

Intinerario Progettazione e Realizzazione Lavori

ITINERARIO INTERNAZIONALE E78 S.G.C. GROSSETO - FANO ADEGUAMENTO A 4 CORSIE NEL TRATTO GROSSETO - SIENA (S.S. 223 "DI PAGANICO") DAL KM 41+600 AL KM 53+400 - LOTTO 9

PROGETTO ESECUTIVO COD. F15

PROGETTAZIONE: ATI SINTAGMA - GDC - ICARIA

IL RESPONSABILE DELL'INTEGRAZIONE DELLE PRESTAZIONI SPECIALISTICHE: **Sintagma**

IL COORDINATORE PER LA SICUREZZA IN FASE DI PROGETTAZIONE: **ICARIA**

OPERE DI ATTRAVERSAMENTO IDRAULICO TOMBINO P19 Armature - Tav. 1 di 2

CODICE PROGETTO	UN. RED.	A. REG.	NOME FILE	REVISIONE	SCALA:
LOF115	E	1901	T00-TM15-STR-AR01	A	1:50