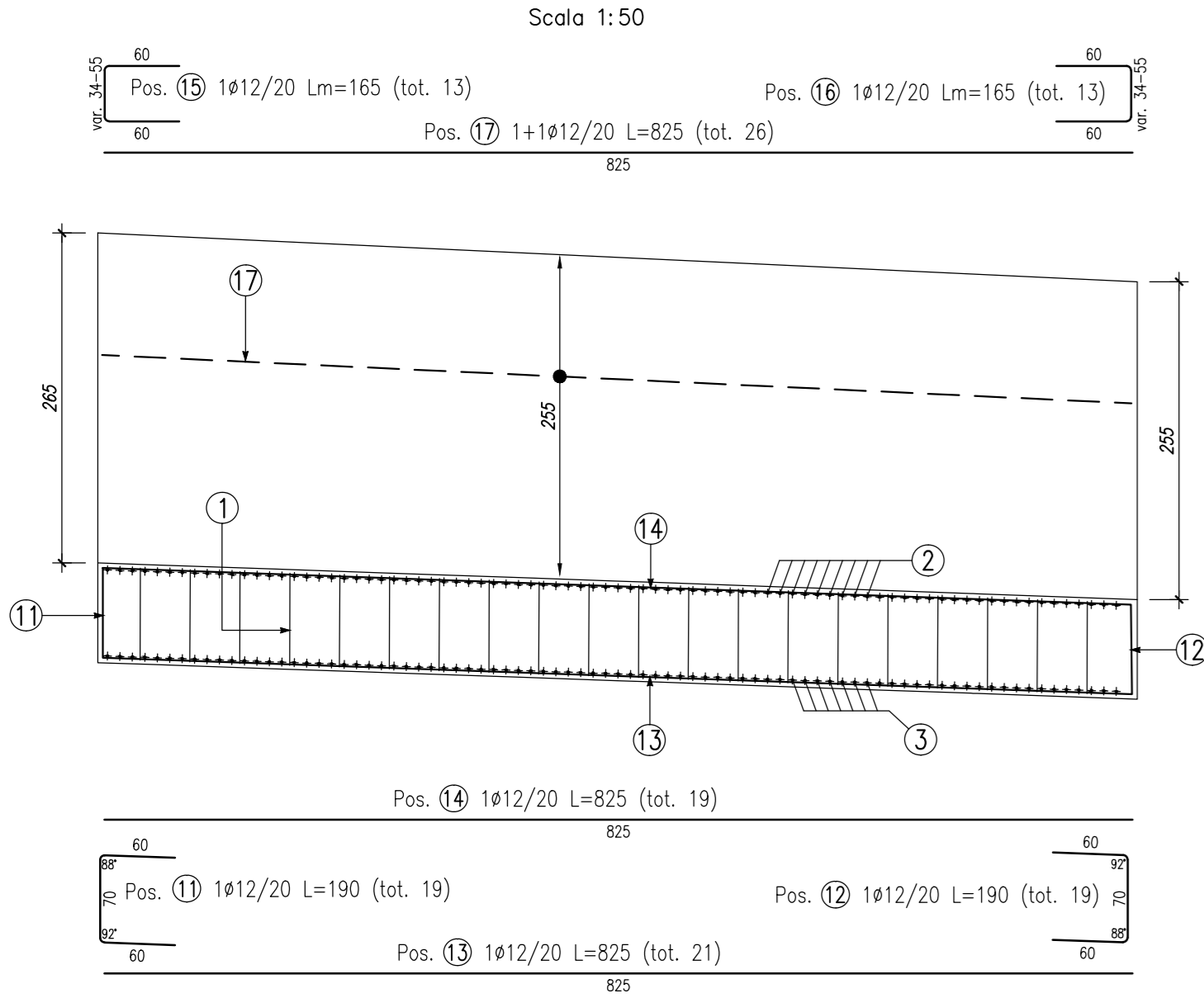
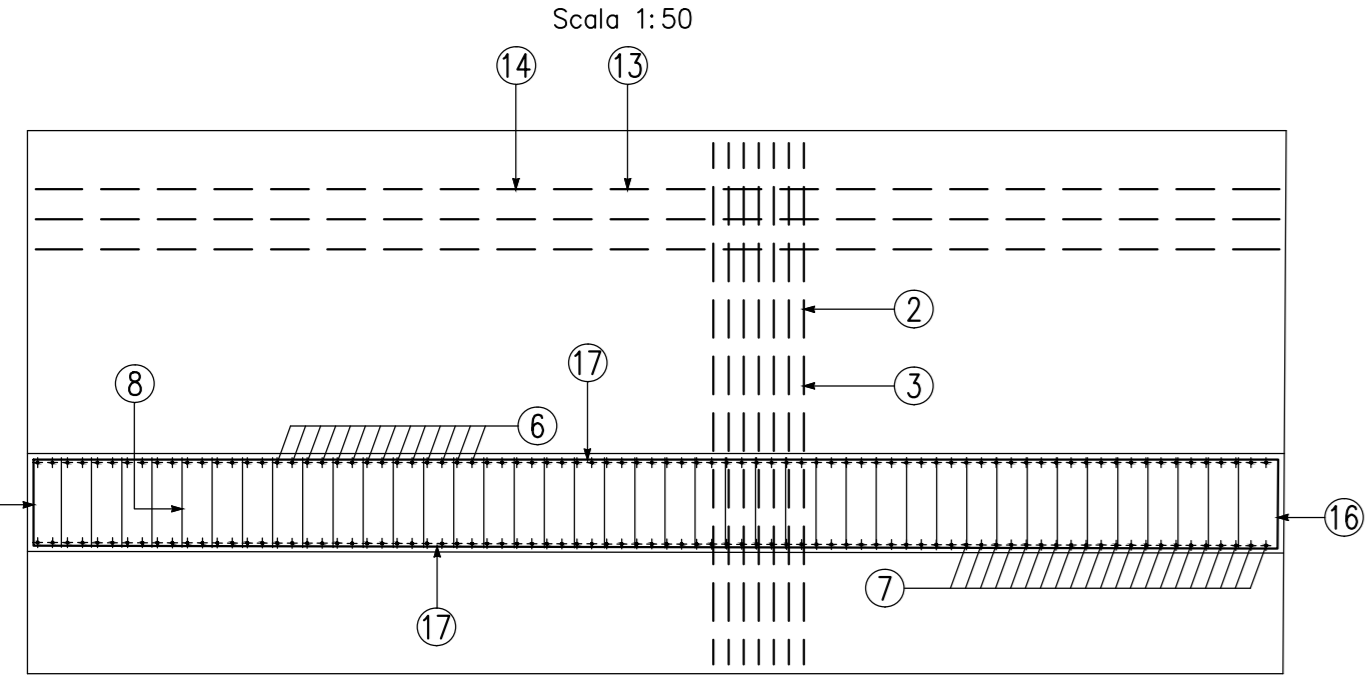


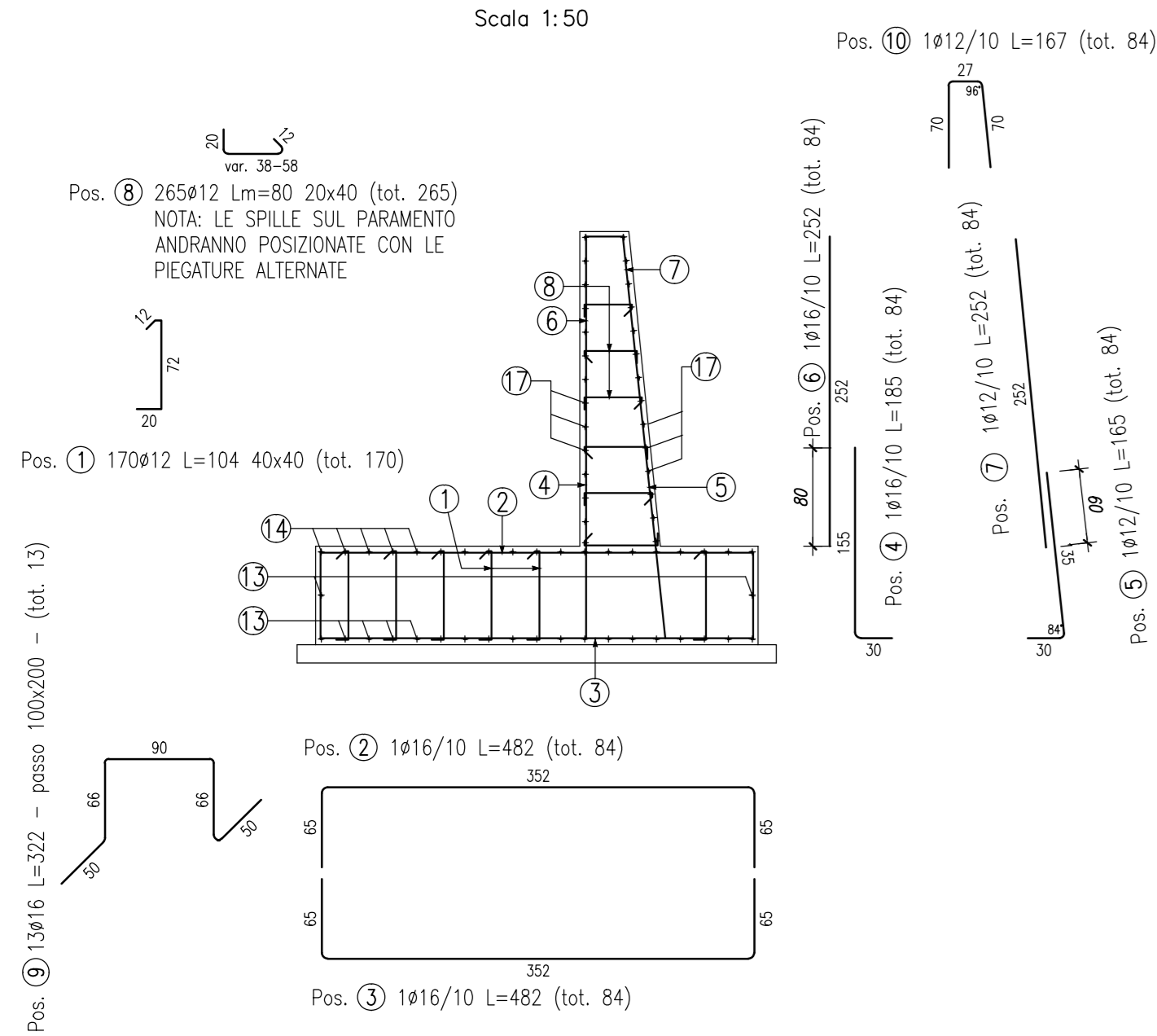
VISTA CONCIO 1



PIANTA CONCIO 1

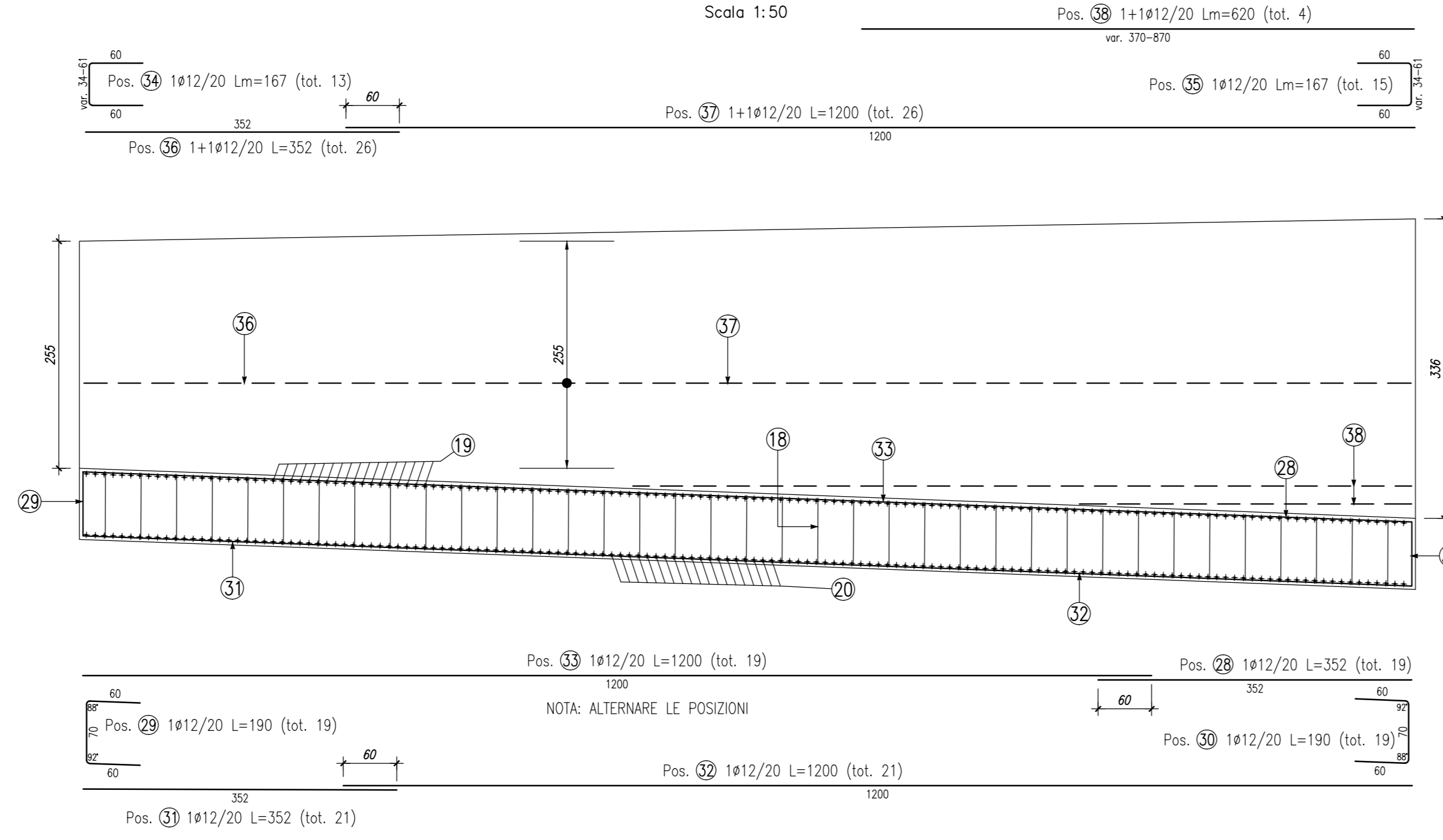


SEZIONE TIPO CONCIO 1



ELEMENTO: CONCIO 1					N.ELEMENTI: 1	
POSIZIONE	N. PEZZI	φ [mm]	L [mm]	L. TOT [m]	PESO [kg]	SCHEMA PEGATURA (misure di filo esterno)
1	170	12	1043	177	157	292
2	84	16	4820	405	639	252
3	84	16	4820	405	639	252
4	84	16	1850	155	245	151
5	84	12	1646	138	123	191
6	84	16	2520	212	334	000
7	84	12	2520	212	188	000
8	265	12	-- x --	212	188	292
9	13	16	3218	42	66	492
10	84	12	1670	140	125	252
11	19	12	1900	36	32	252
12	19	12	1900	36	32	292
13	21	12	8250	173	154	000
14	19	12	8250	157	139	000
15	13	12	-- x --	21	19	252
16	13	12	-- x --	21	19	212
17	26	12	8250	215	190	000
PESO TOTALE:					3289	

VISTA CONCIO 2



PIANTA CONCIO 2

