

SEZIONE LONGITUDINALE STRUTTURA METALLICA IN ASSE TRACCIAMENTO (2/4) 1:100

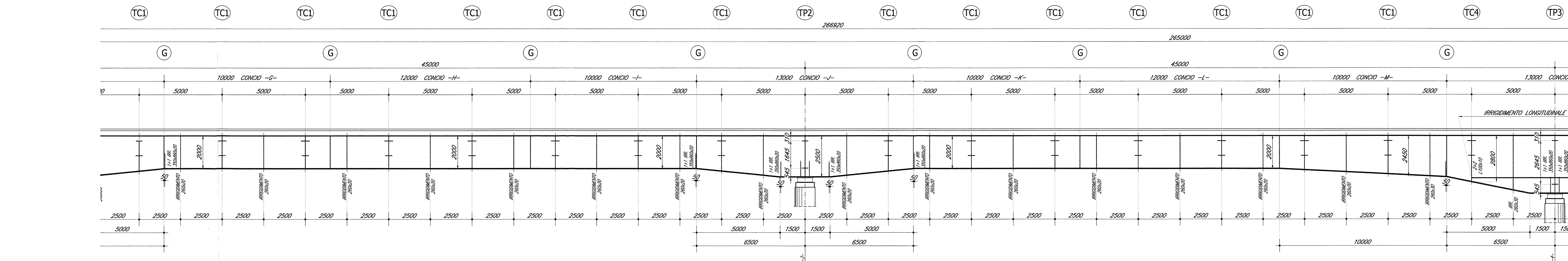
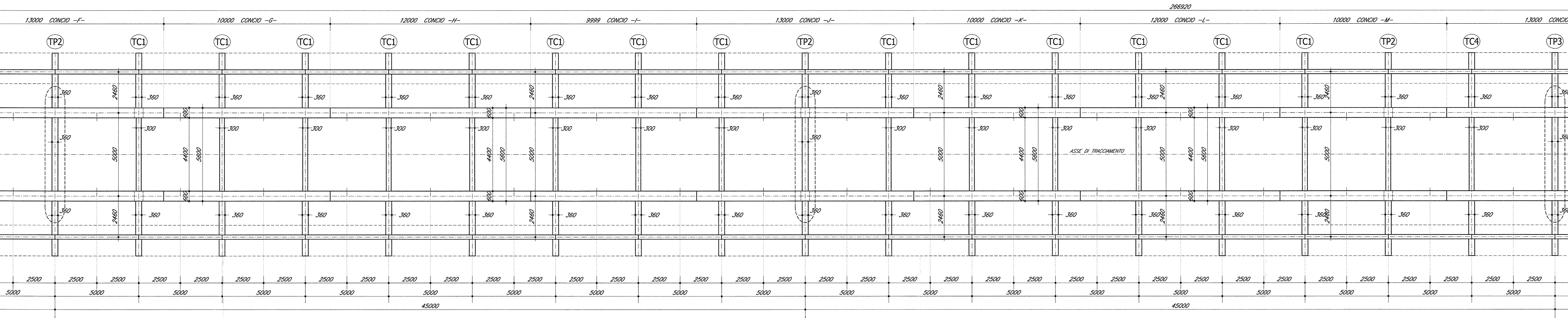
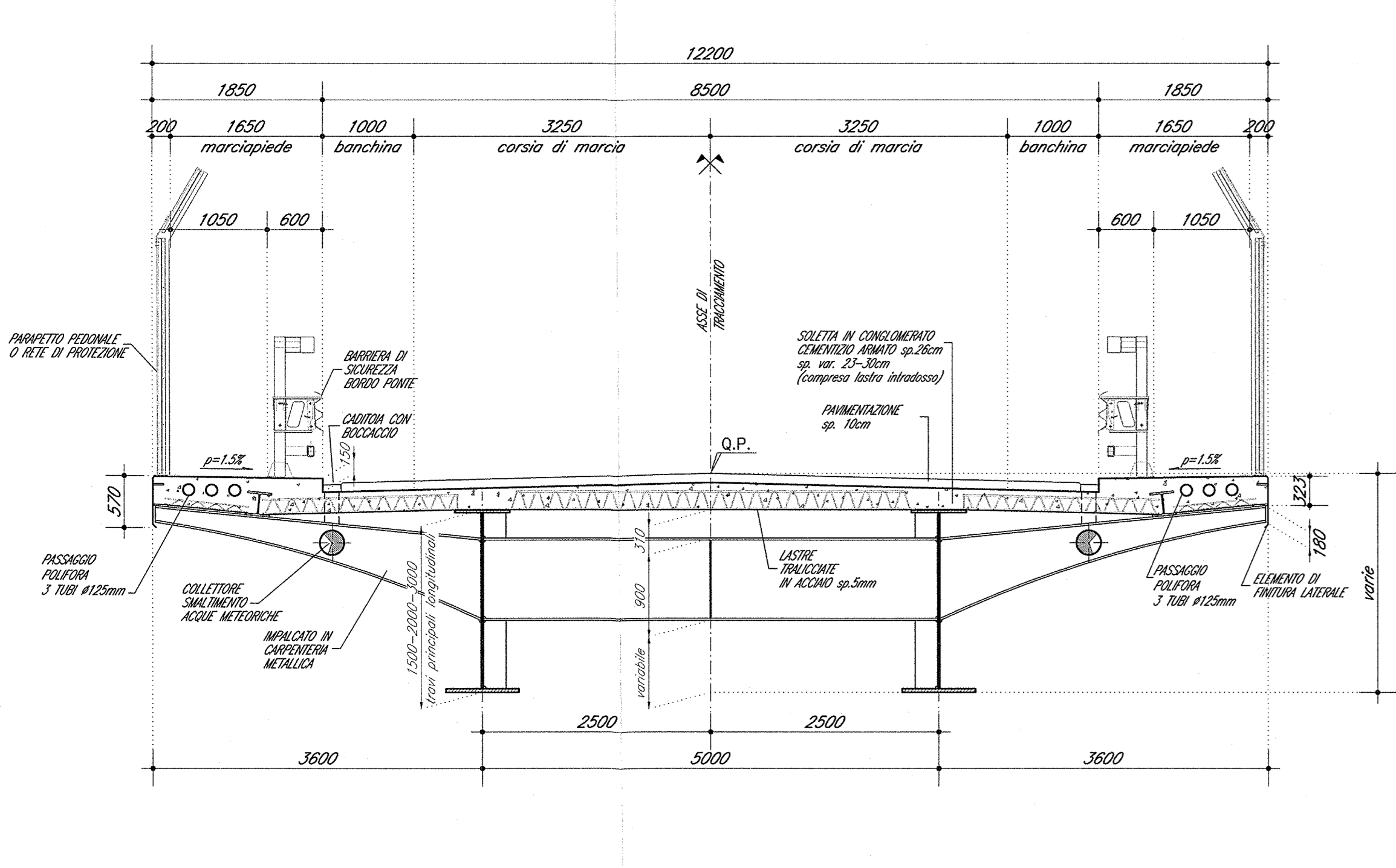


Table with 12 columns representing different sections (CONCIO -G- to -M-) and rows for various structural components: TRAVICCI DI COMPLESSO, TRAVICCI DI APPICCO, and CONTORNIO.

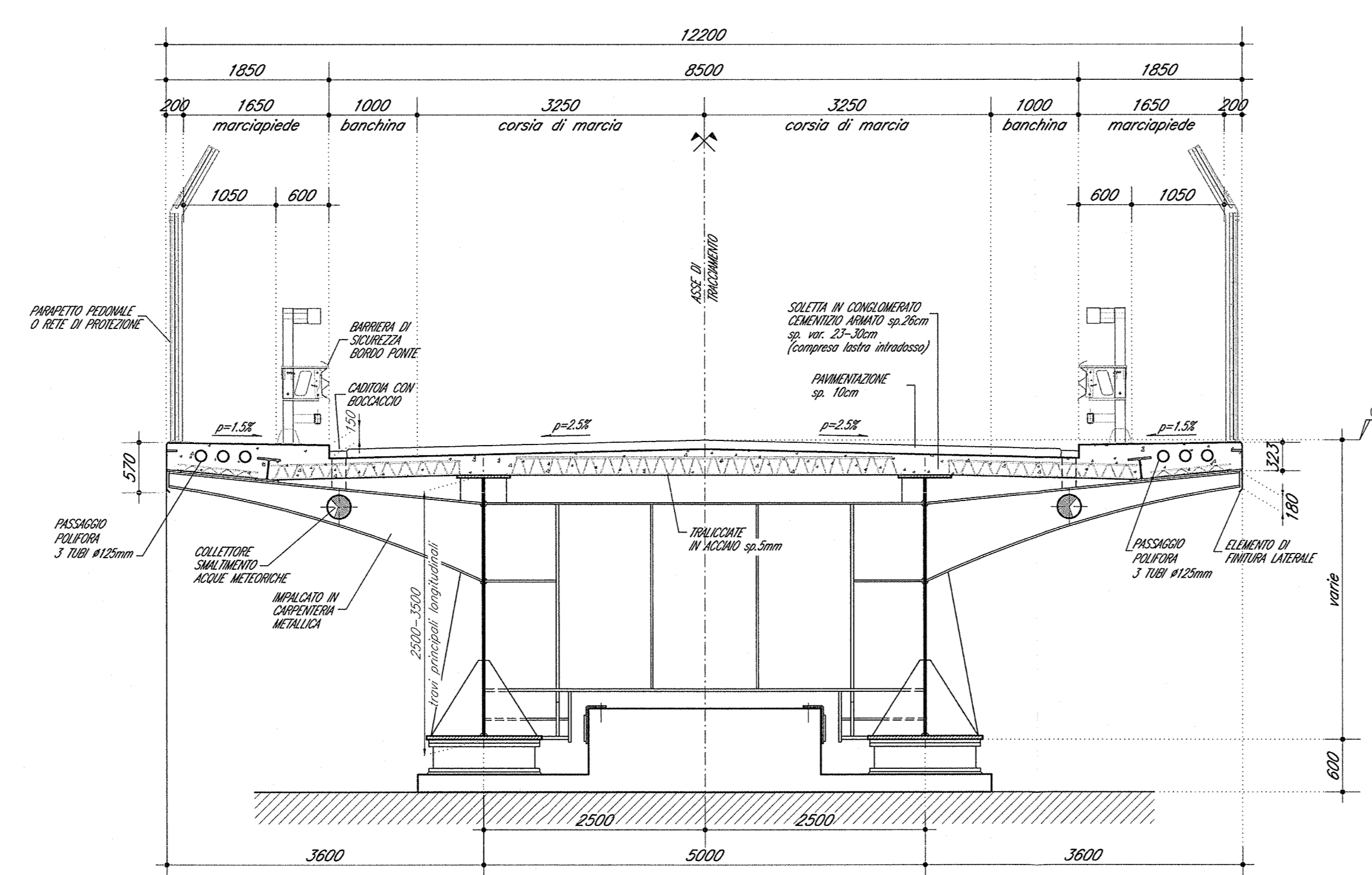
PIANTA SUPERIORE STRUTTURA METALLICA (2/4) 1:100



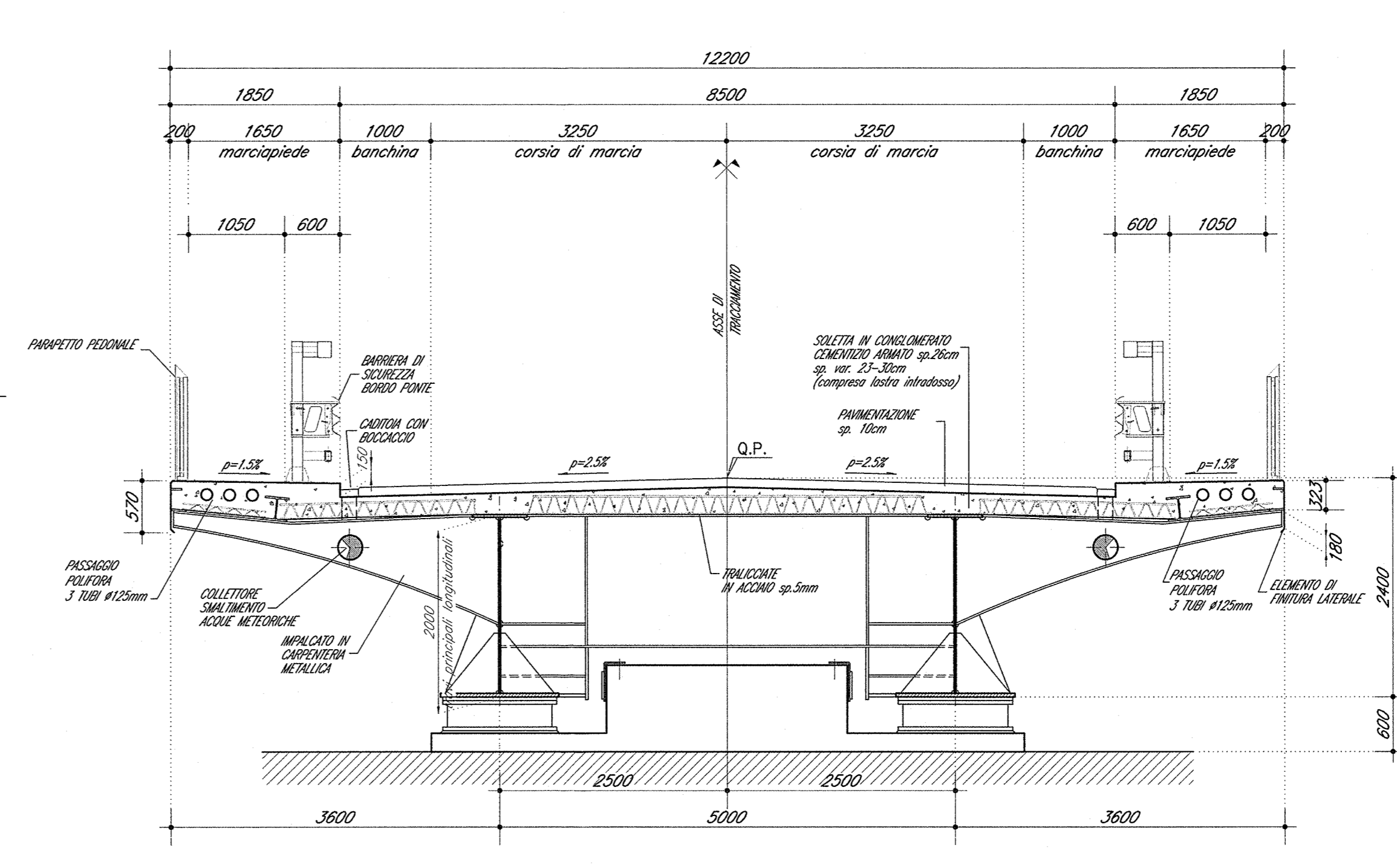
IMPALCATO : SEZIONE TRASVERSALE TIPO SUL TRAVERSO 1:50



IMPALCATO : SEZIONE TRASVERSALE TIPO SU PILA 1:50



IMPALCATO : SEZIONE TRASVERSALE TIPO SU SPALLA 1:50



DOCUMENTI DI RIFERIMENTO

Table listing reference documents (DESCRIZIONE) and their corresponding codes (CODICE).

NOTE GENERALI

General notes regarding dimensions, materials, and construction details.

CARATTERISTICHE DEI MATERIALI

Reference to material specifications and general notes.

Logos for RFI (Rete Ferroviaria Italiana) and ITALFERR (Gruppo Ferrovie dello Stato).

Project identification: INFRASTRUTTURE FERROVIARIE STRATEGICHE DEFINITE DALLA LEGGE OBIETTIVO N. 443/01, LINEA A.V. I.A.C. TORINO - VENEZIA Tratta MILANO - VERONA, Progetto ESECUTIVO, IV16 - CAVALCAFERROVIA VIA BRESCIA - PK 108+954,045.

Project management information including contractor (Cepav due), date (29 MAG 2020), and various technical stamps.