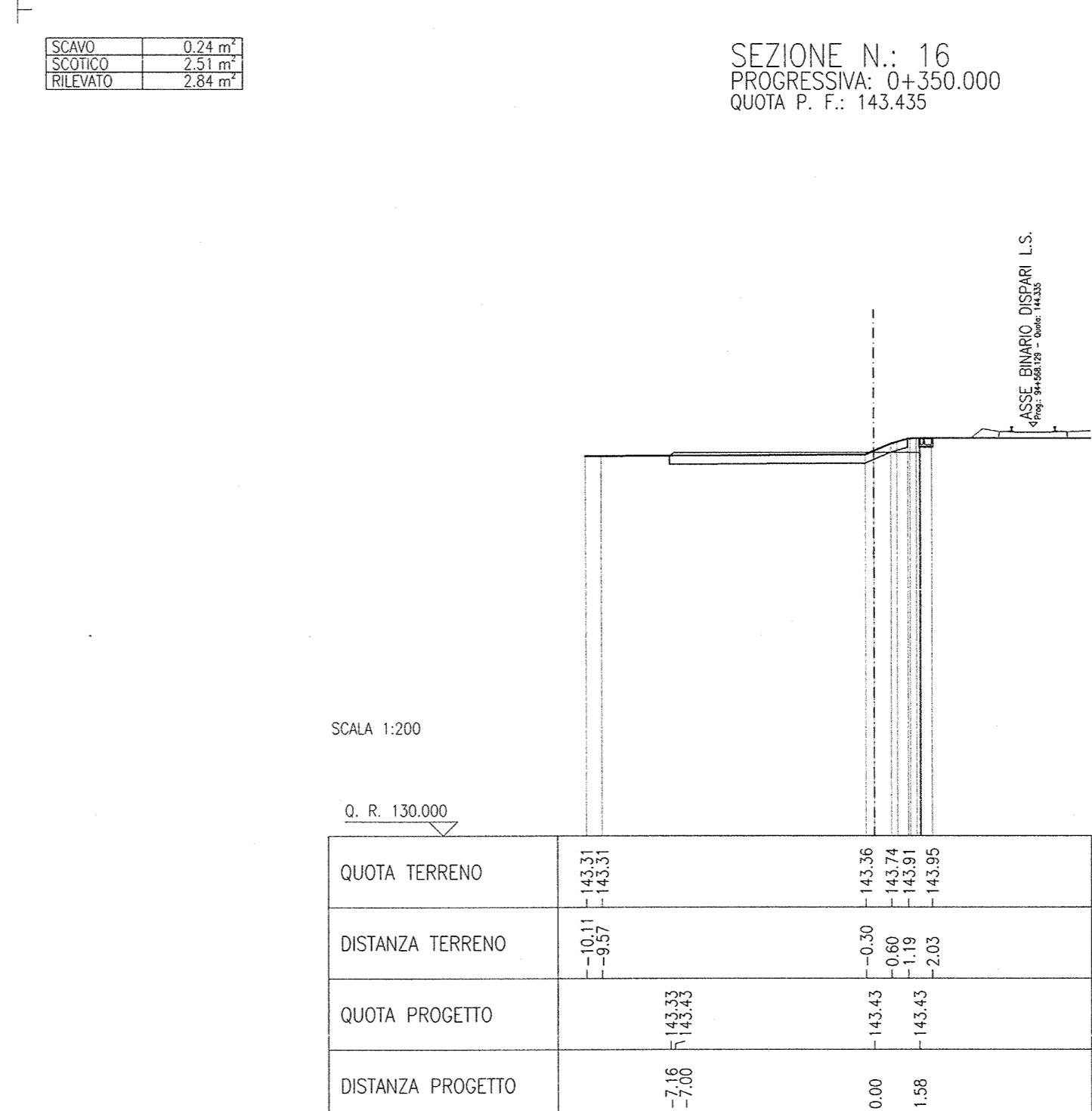
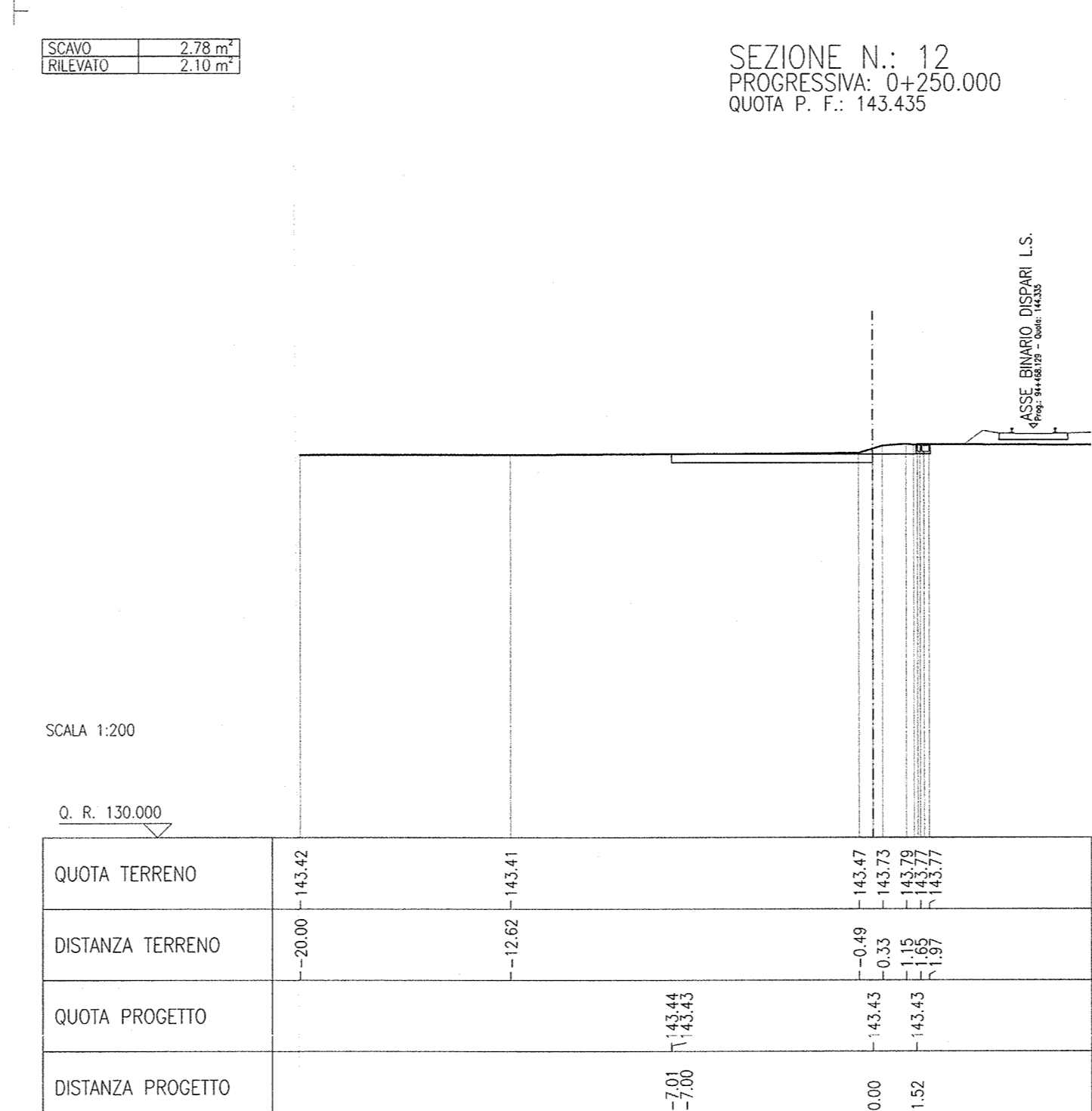
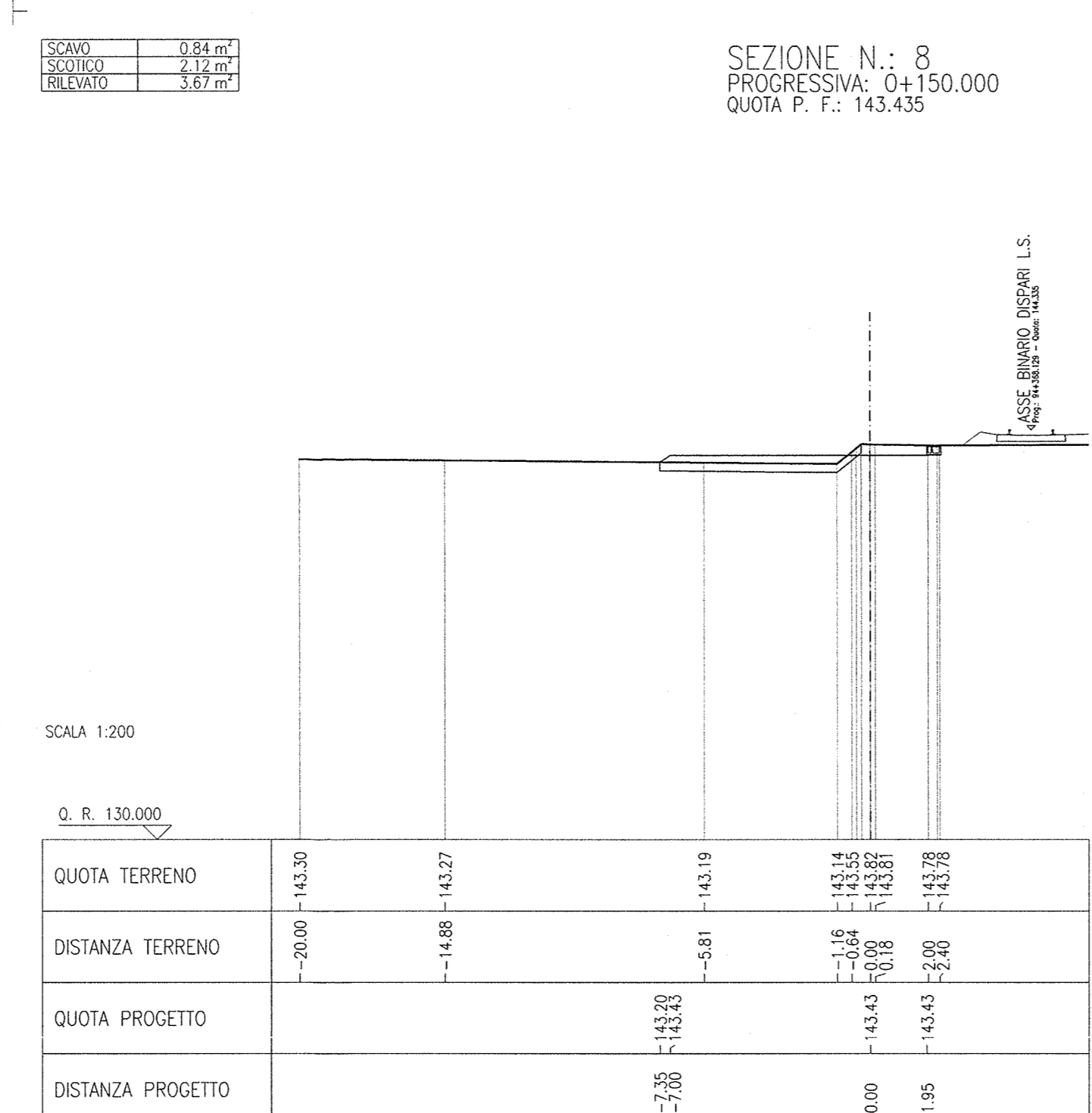
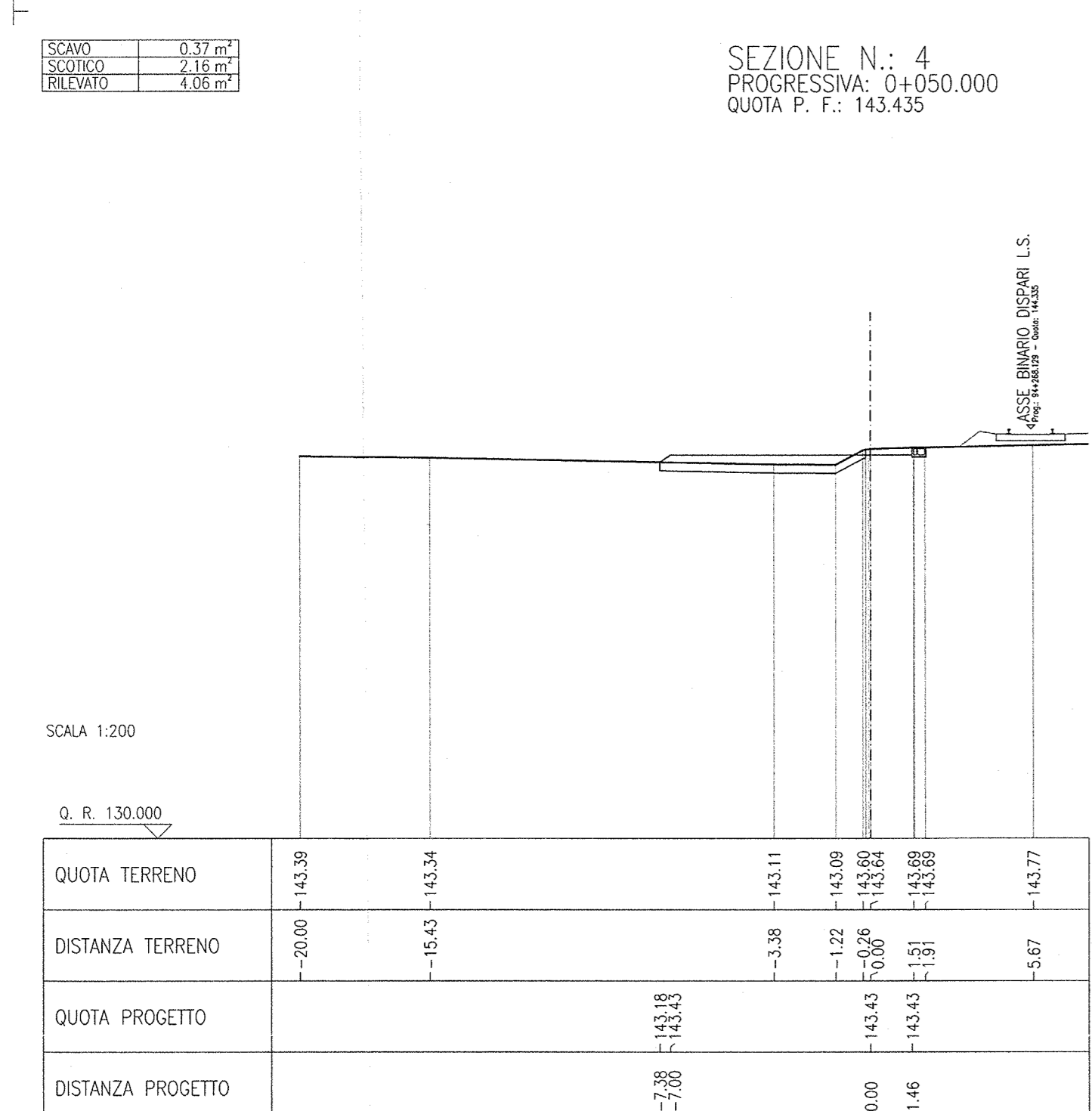
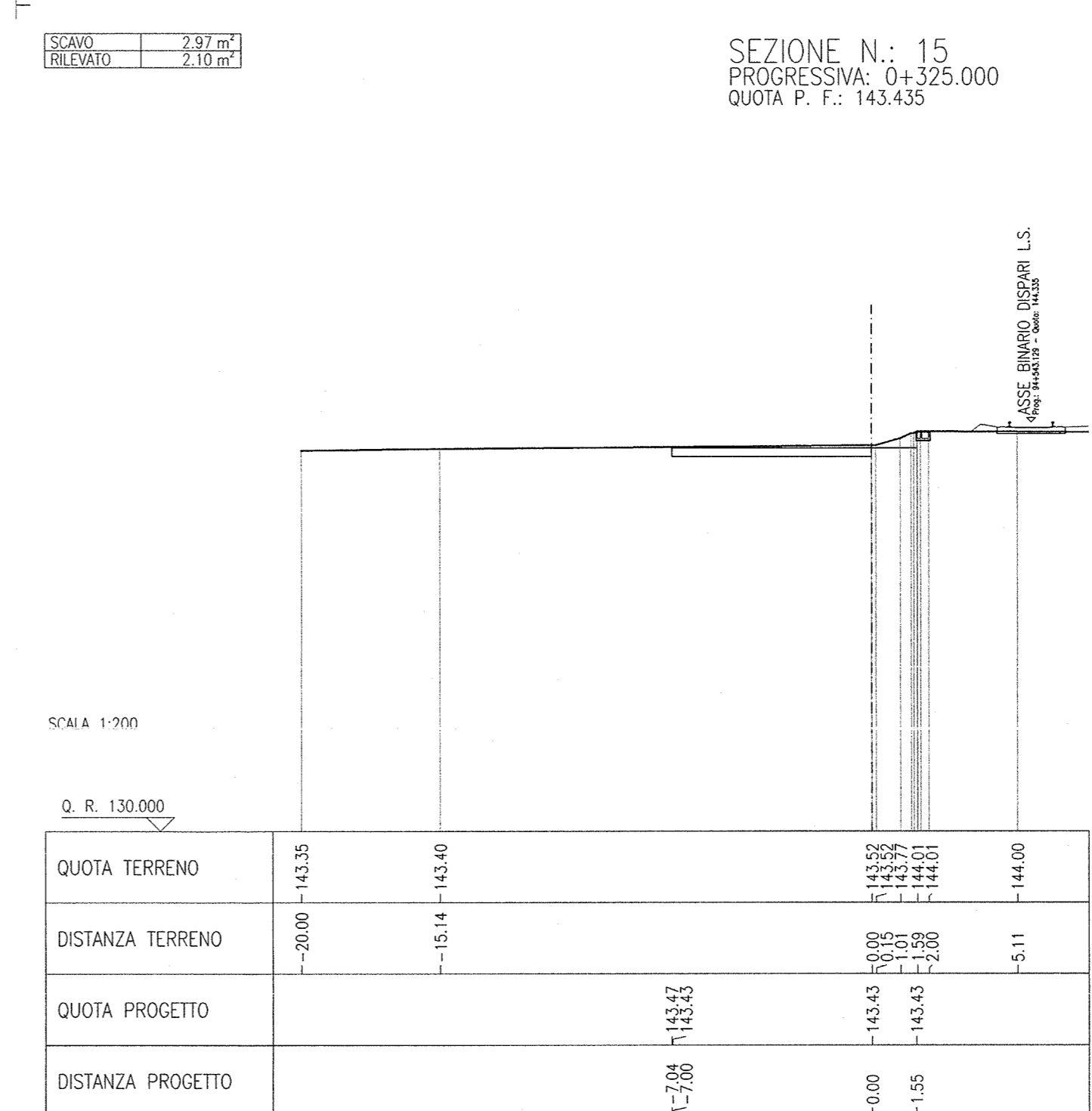
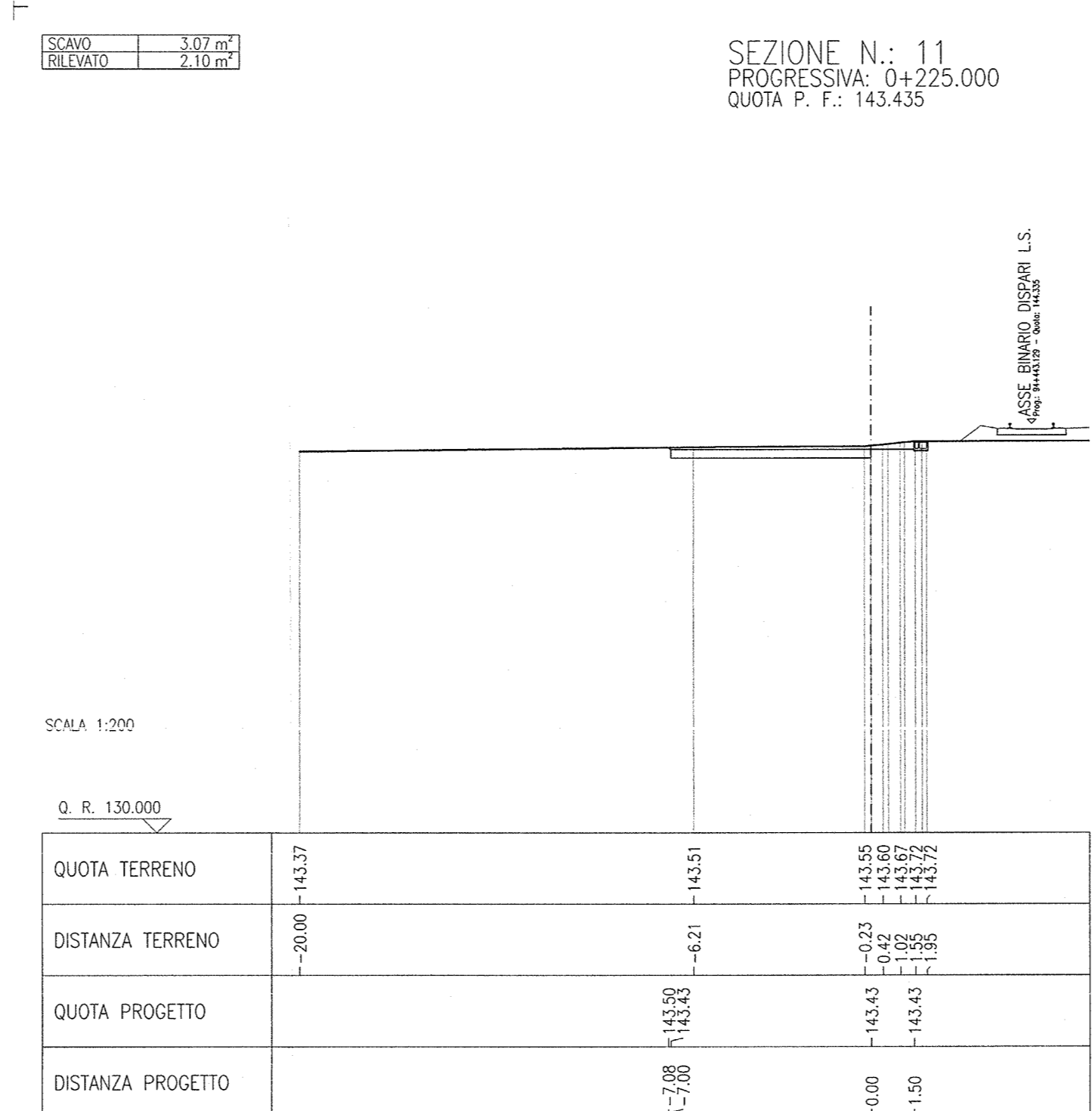
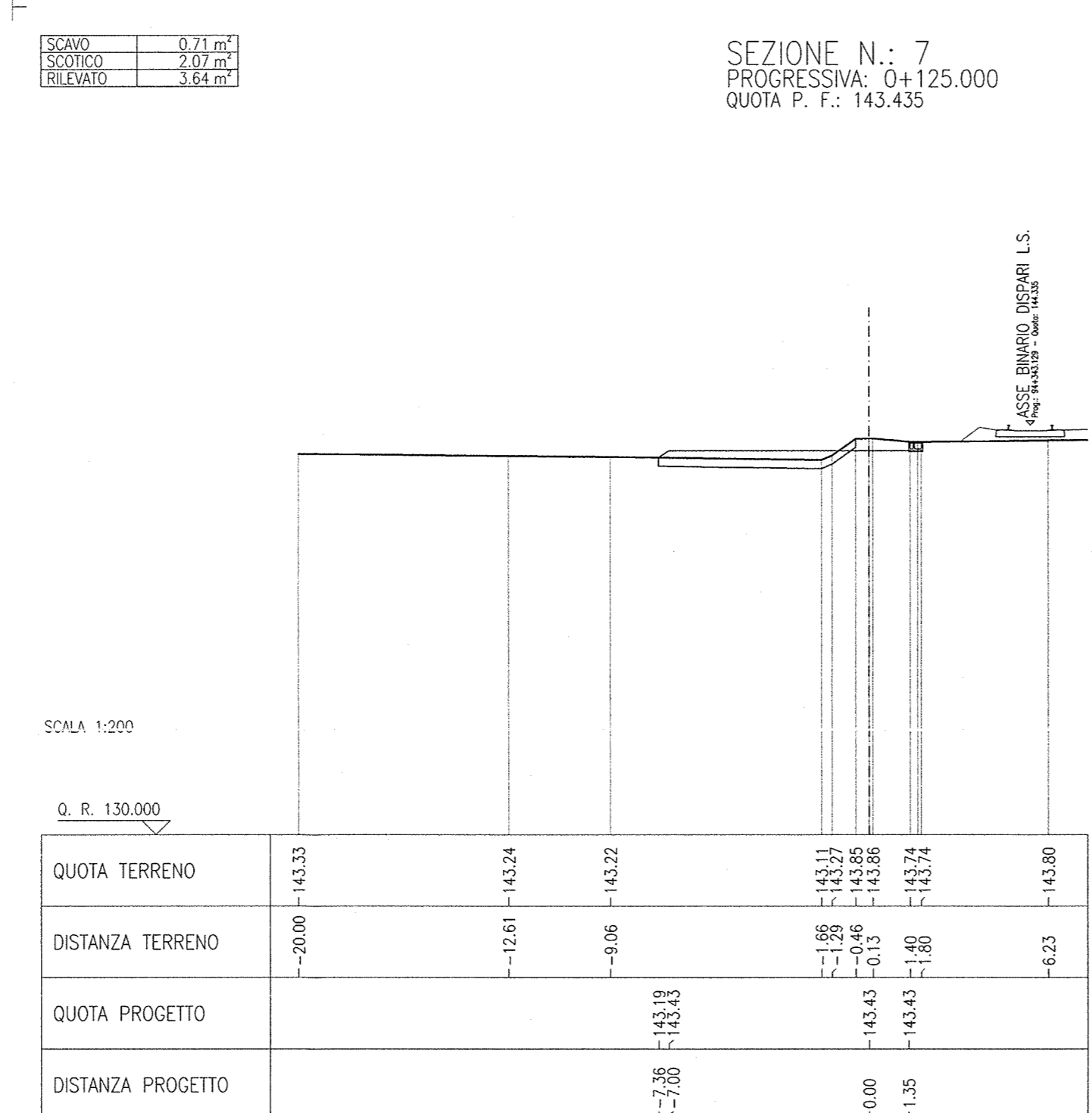
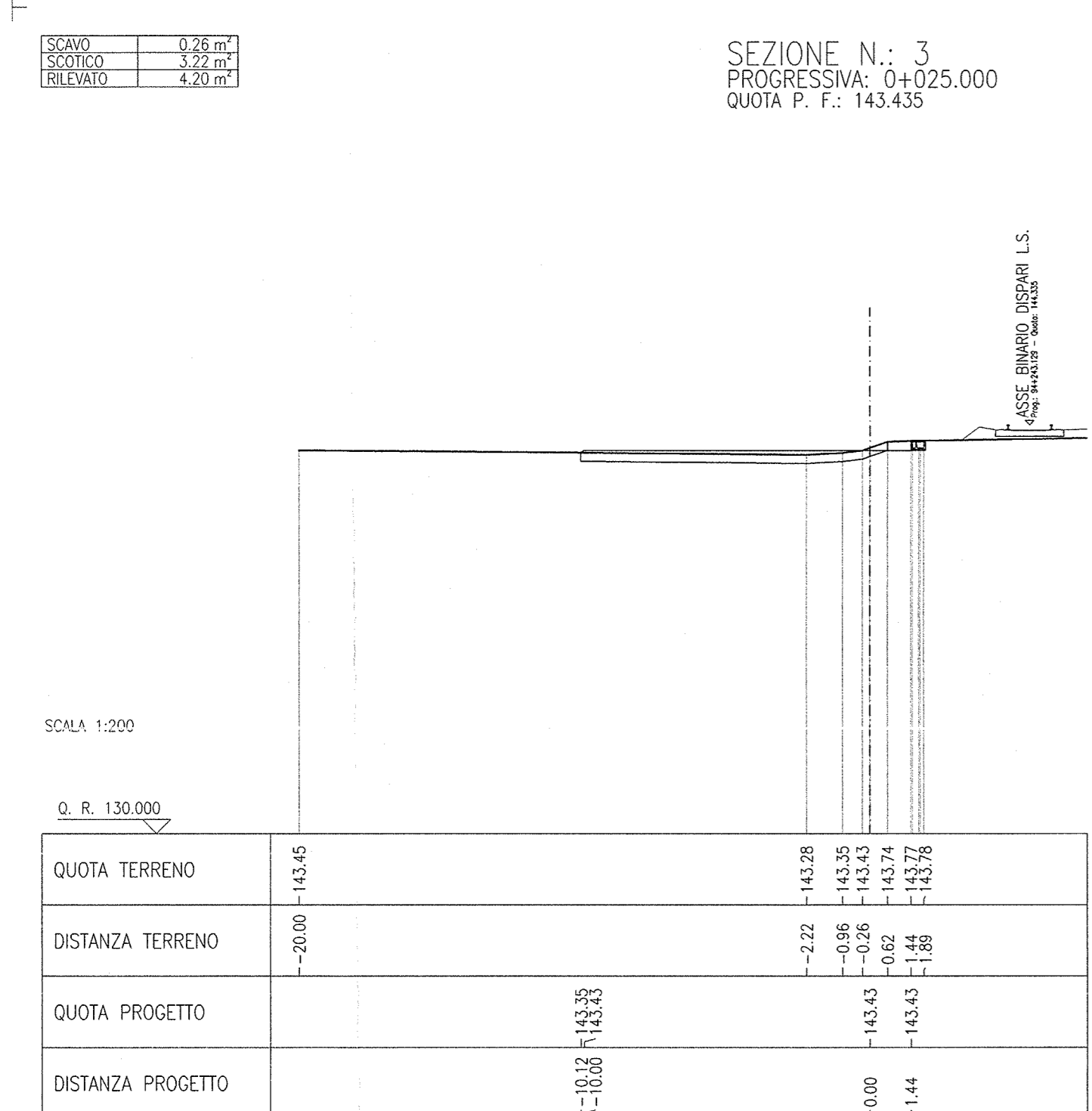
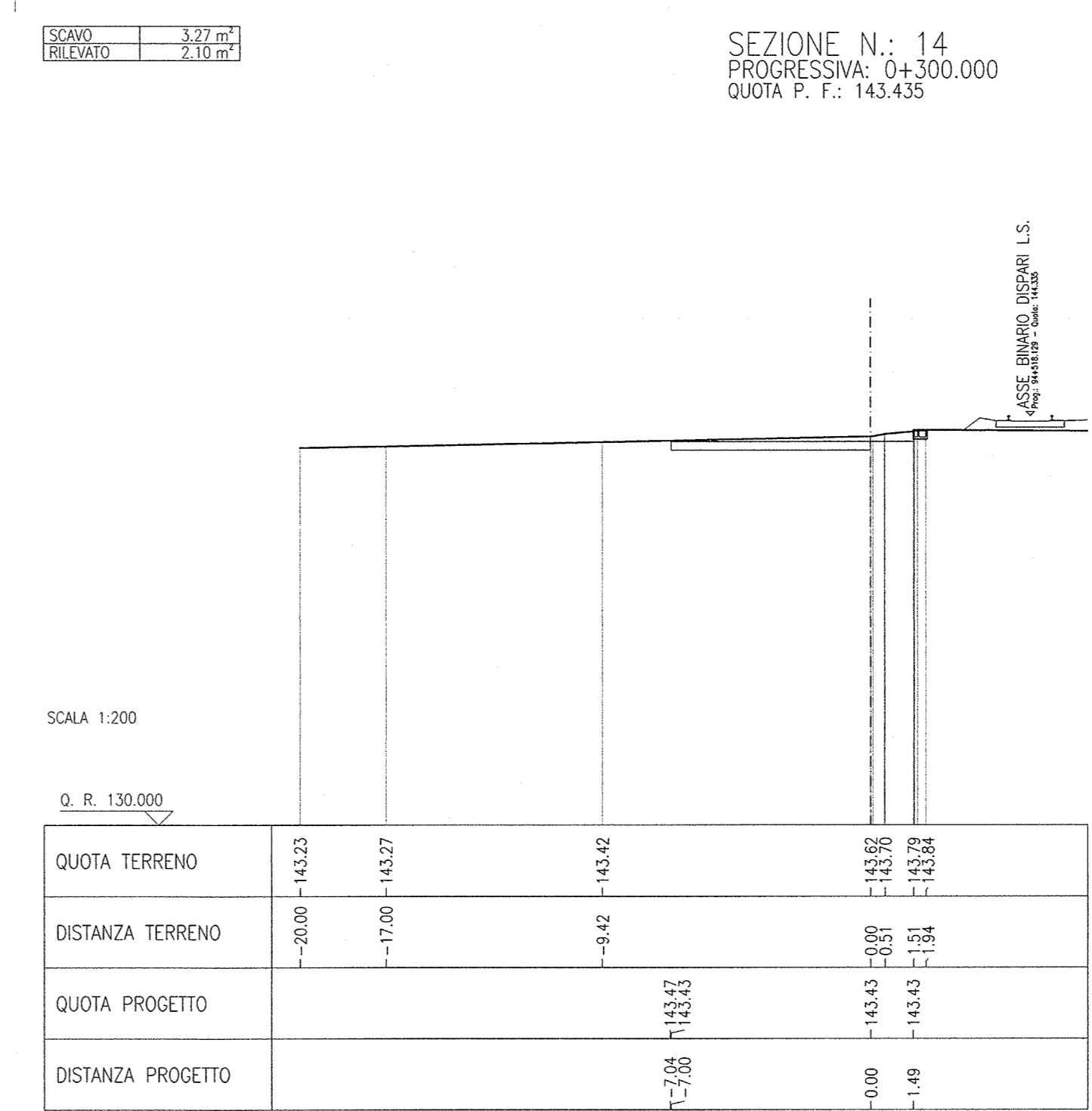
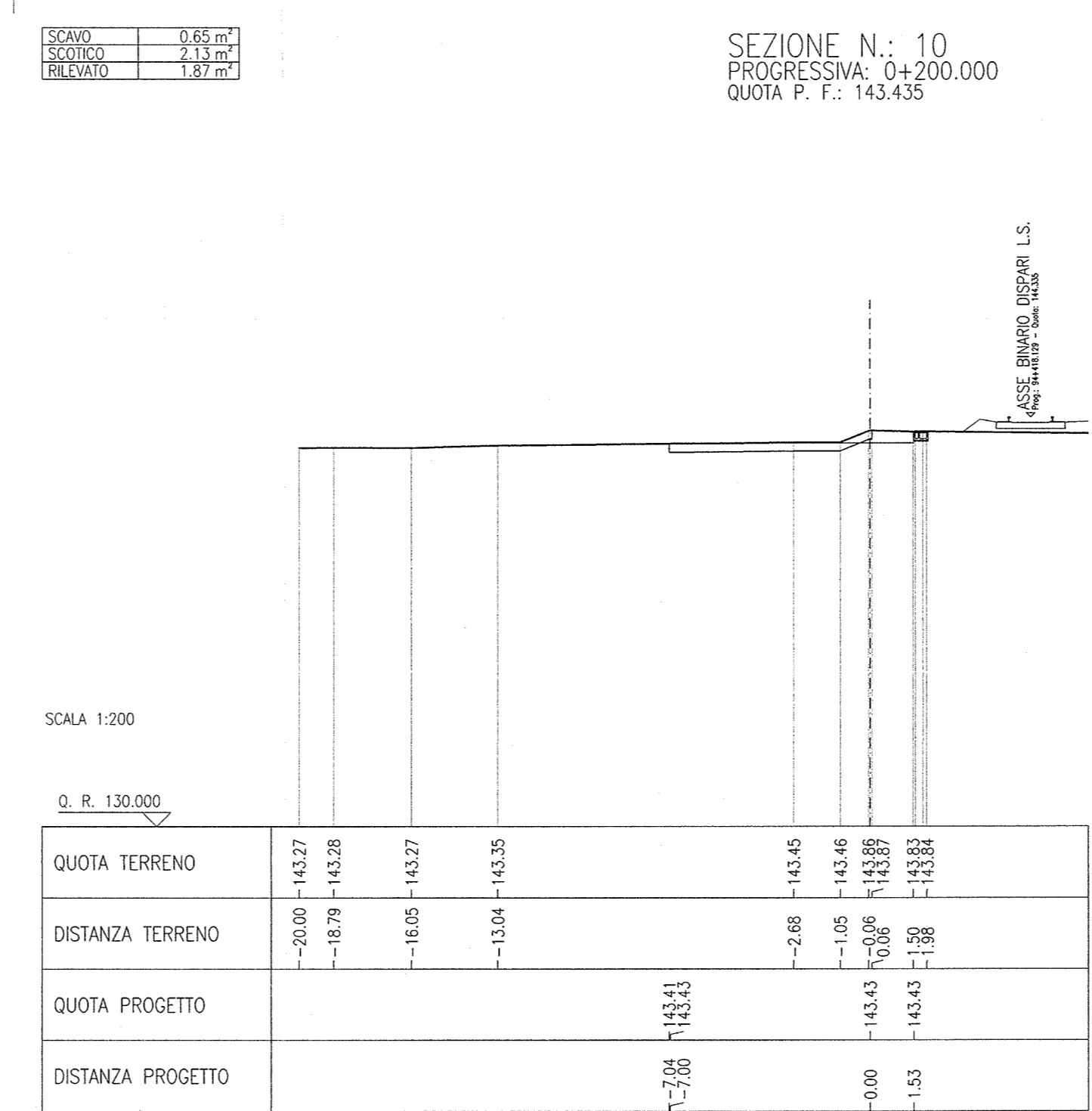
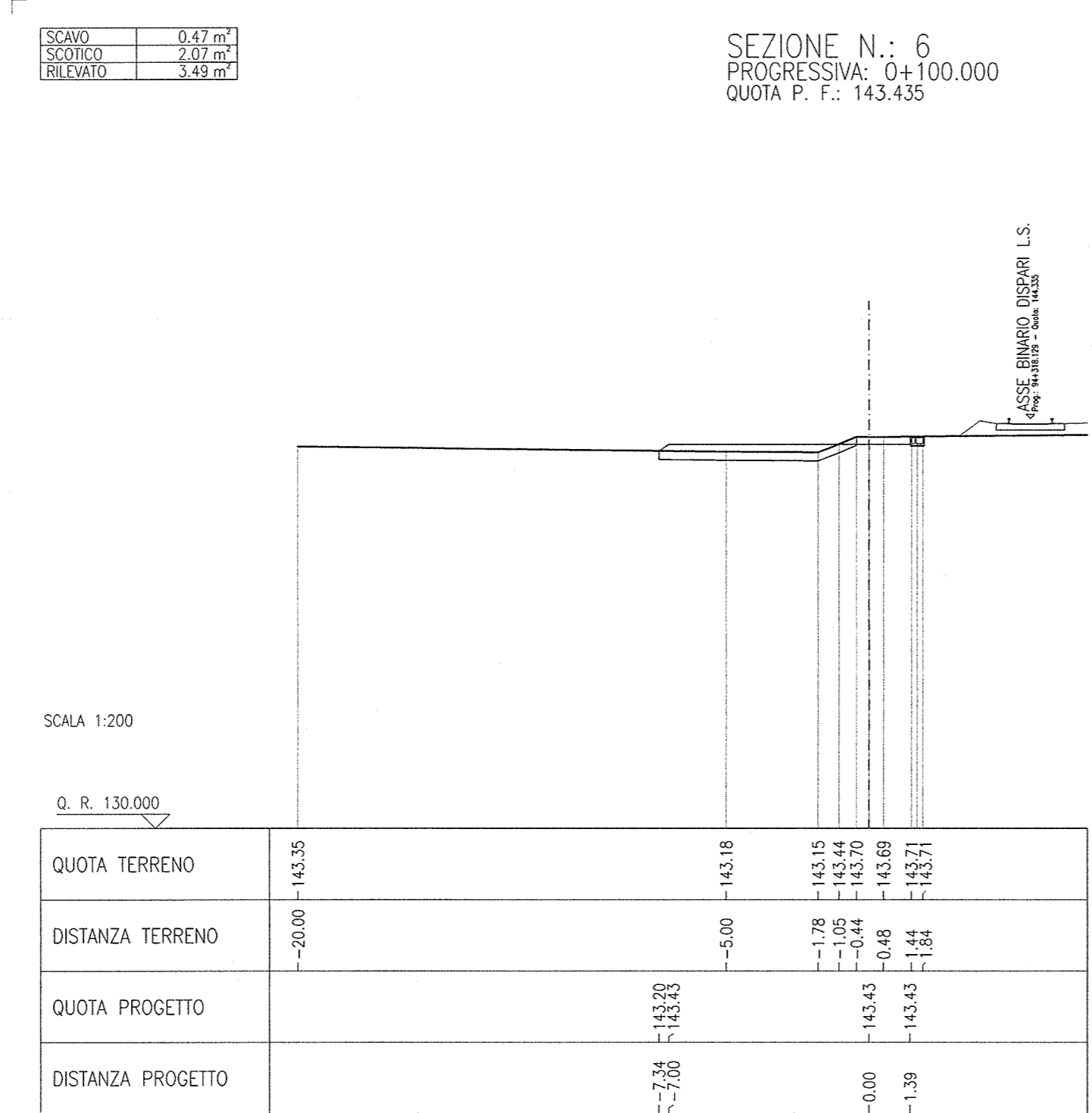
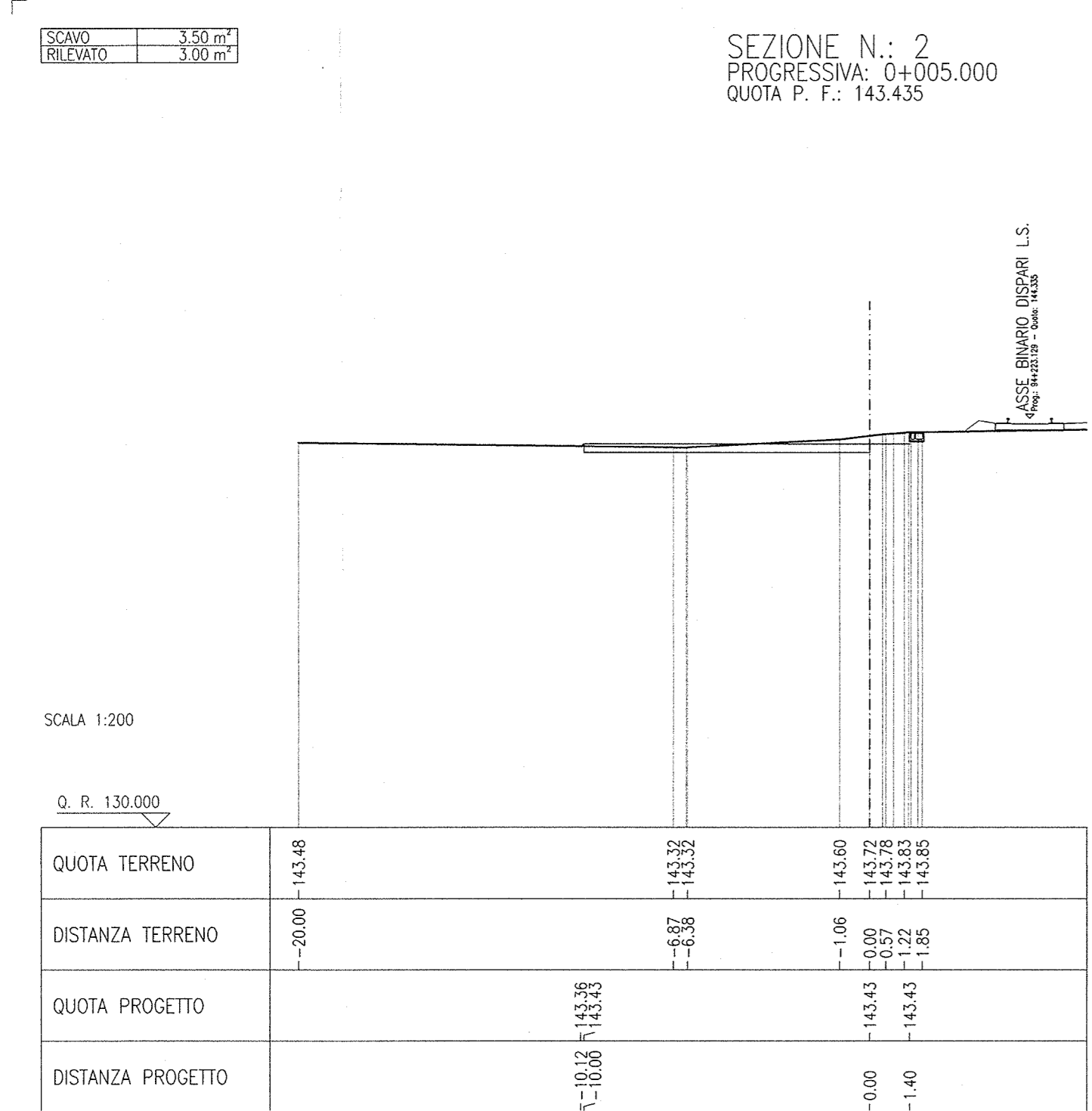
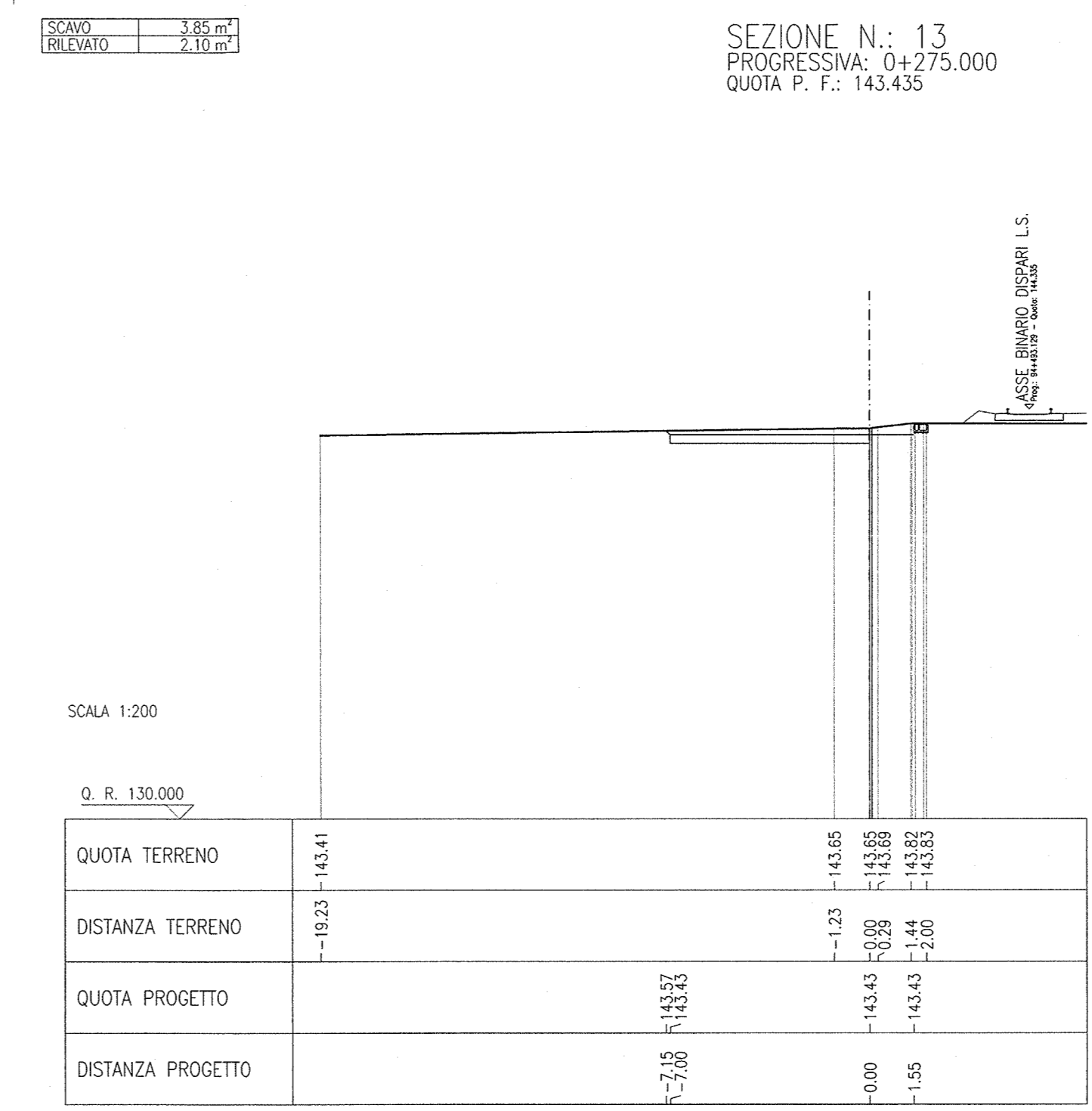
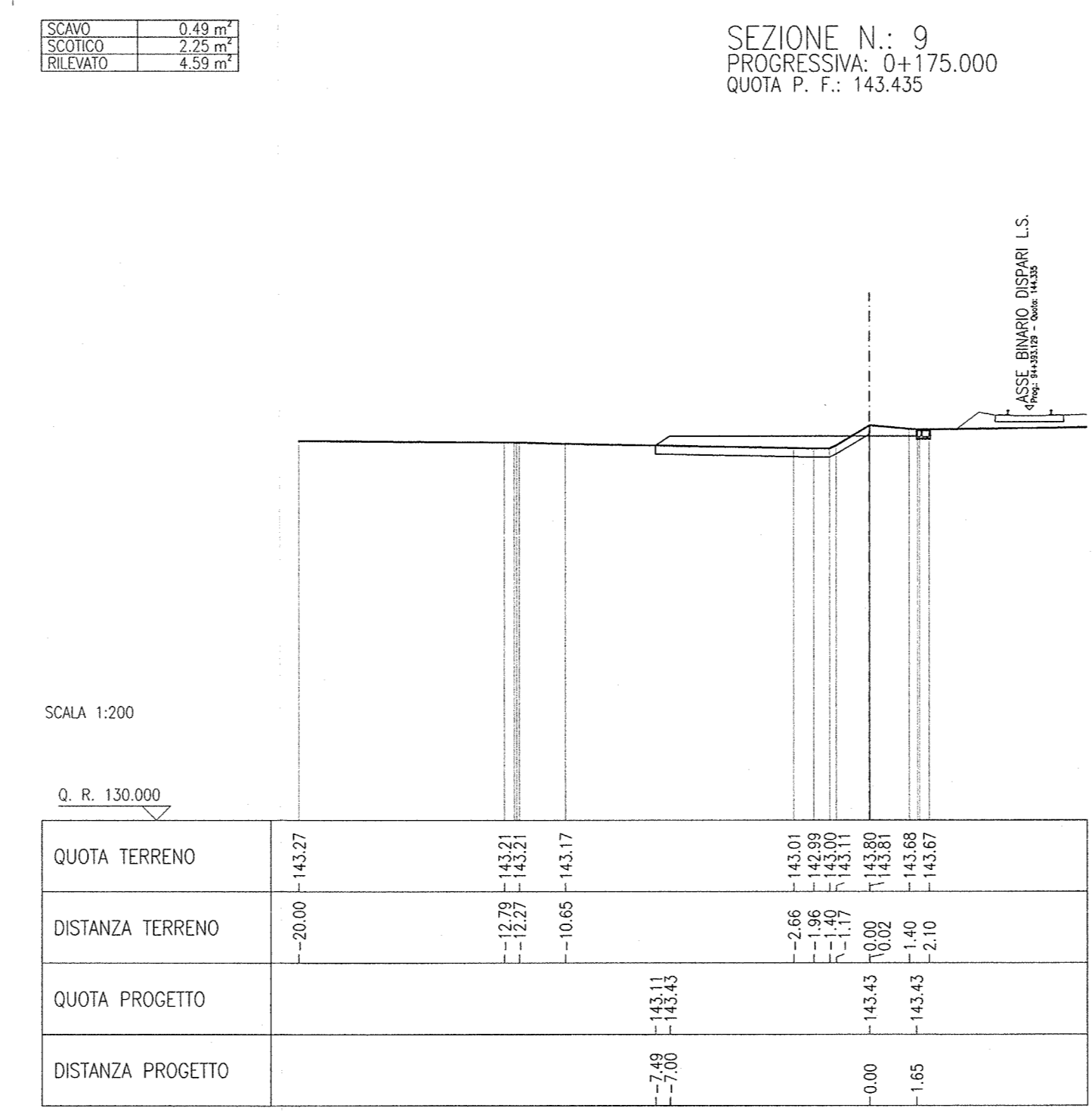
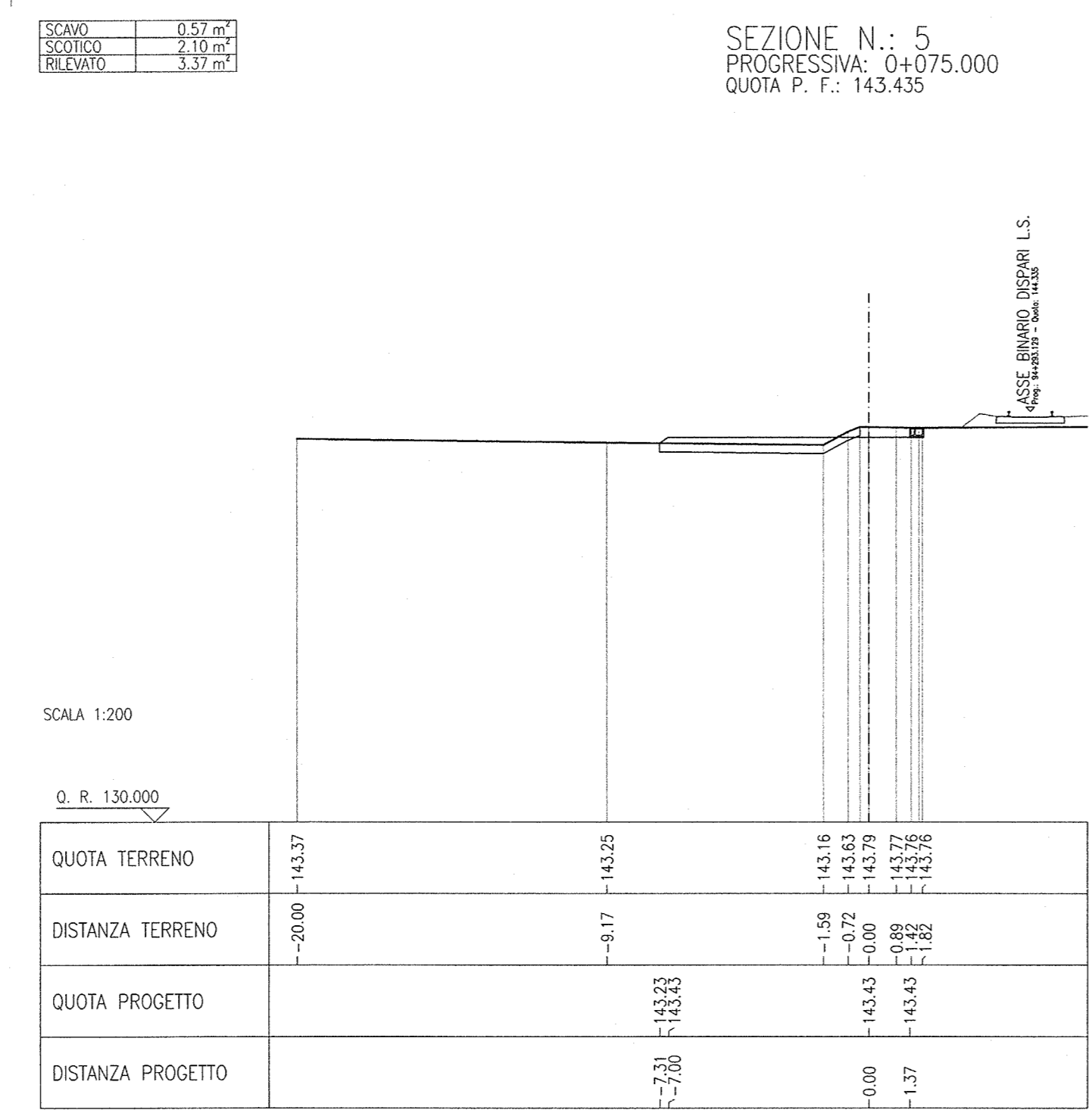
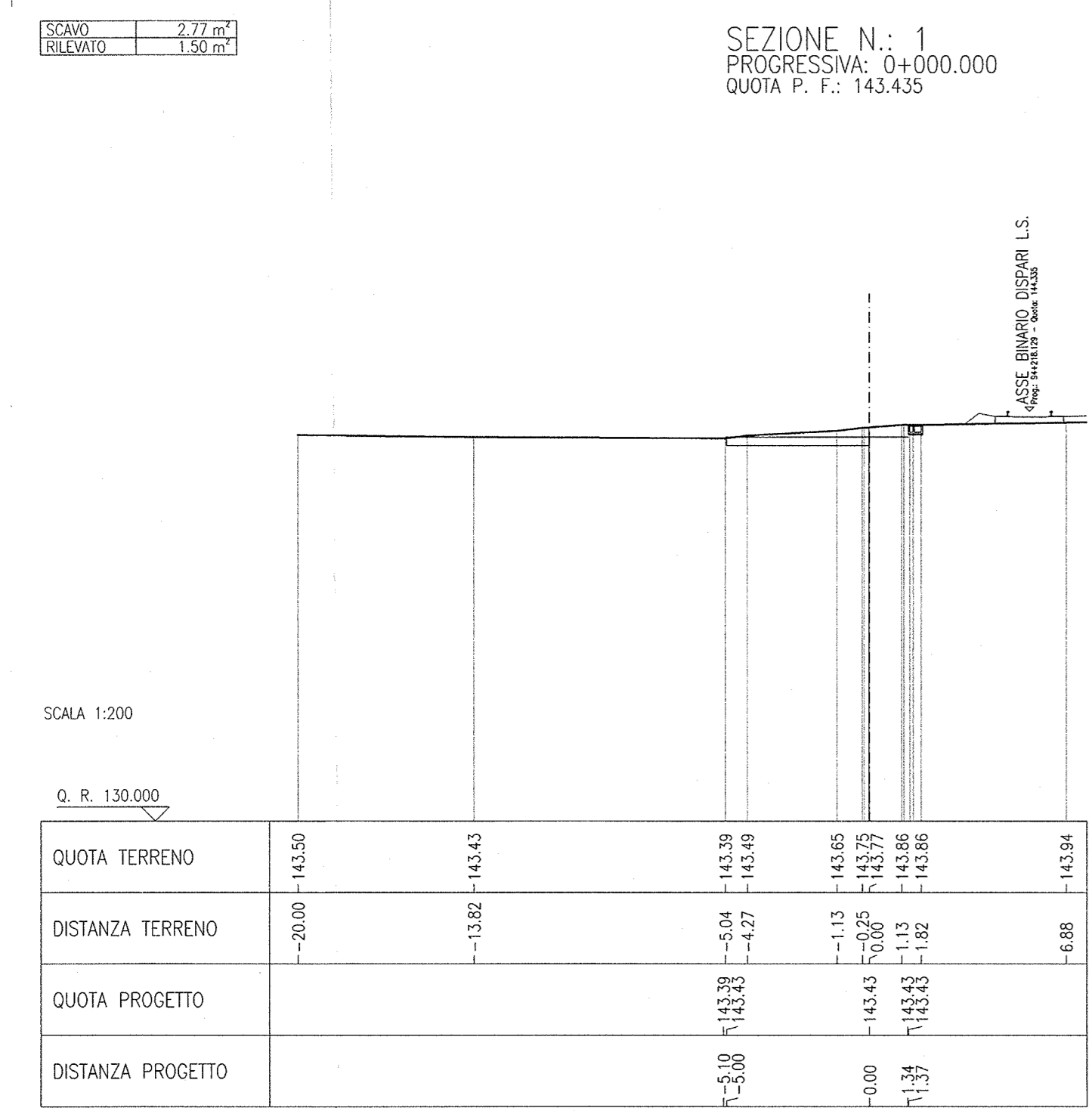


DESCRIZIONE	CODICE
- OP19 - RELAZIONE TECNICA GENERALE	INOR12EE2R00P1900001
- OP19 - PLANIMETRIA STATO DI FATTO	INOR12EE2R00P1900001
- OP19 - PLANIMETRIA DI PROGETTO - TAVOLA 1	INOR12EE2R00P1900001
- OP19 - PLANIMETRIA DI PROGETTO - TAVOLA 2	INOR12EE2R00P1900002
- OP19 - SEZIONI TRASVERSALI - TAVOLA 2	INOR12EE2R00P1900002
- OP19 - SEZIONI TRASVERSALI - TAVOLA 3	INOR12EE2R00P1900003
- OP19 - SEZIONI TIPO INTERVENTI	INOR12EE2R00P1900001

NOTE GENERALI

Q. R. = QUOTA DI RIFERIMENTO



COMMITTENTE: **RFI** RETE FERROVIARIA ITALIANA GRUPPO FERROVIE DELLO STATO

ALTA SORVEGLIANZA: **ITALFERR** GRUPPO FERROVIE DELLO STATO

GENERAL CONTRACTOR: **Cepav due** Consorzio ENI per l'Alta Velocità

INFRASTRUTTURE FERROVIARIE STRATEGICHE DEFINITE DALLA LEGGE OBIETTIVO N. 443/01

LINEA A.V. I.A.C. TORINO - VENEZIA Tratta MILANO - VERONA
Lotto funzionale Brescia-Verona
PROGETTO ESECUTIVO

OP19 - RILEVATO PER BARRIERA A.R. SU L.S. DA PK 105+121 A PK 105+844
SEZIONI TRASVERSALI
TAVOLA 1

GENERAL CONTRACTOR: **Cepav due** Consorzio ENI per l'Alta Velocità
DIRETTORE LAVORI: **Ing. T. T. T.**

SCALA: **1:200**

COMMESSA LOTTO FASE ENTE TIPO DOC. OPERA/DISCIPLINA PROGR. REV.
INOR 12 E E2 W9 OP1900 001 A

PROGETTAZIONE: **ING. ROBERTO...**

Stampato dal Servizio di Progettazione ITALFERR S.p.A. File: INOR12EE2R00P1900001A_10.dwg