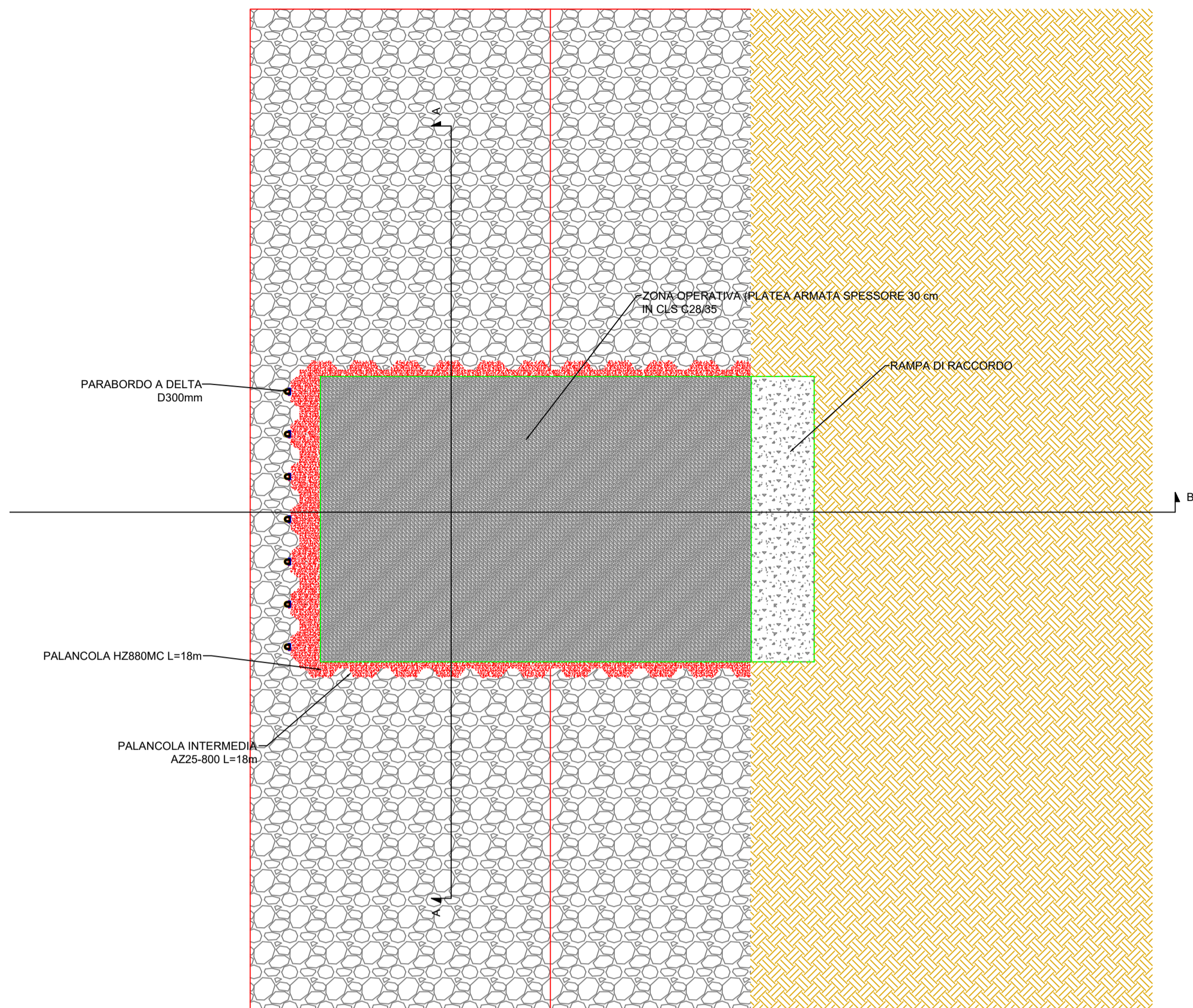


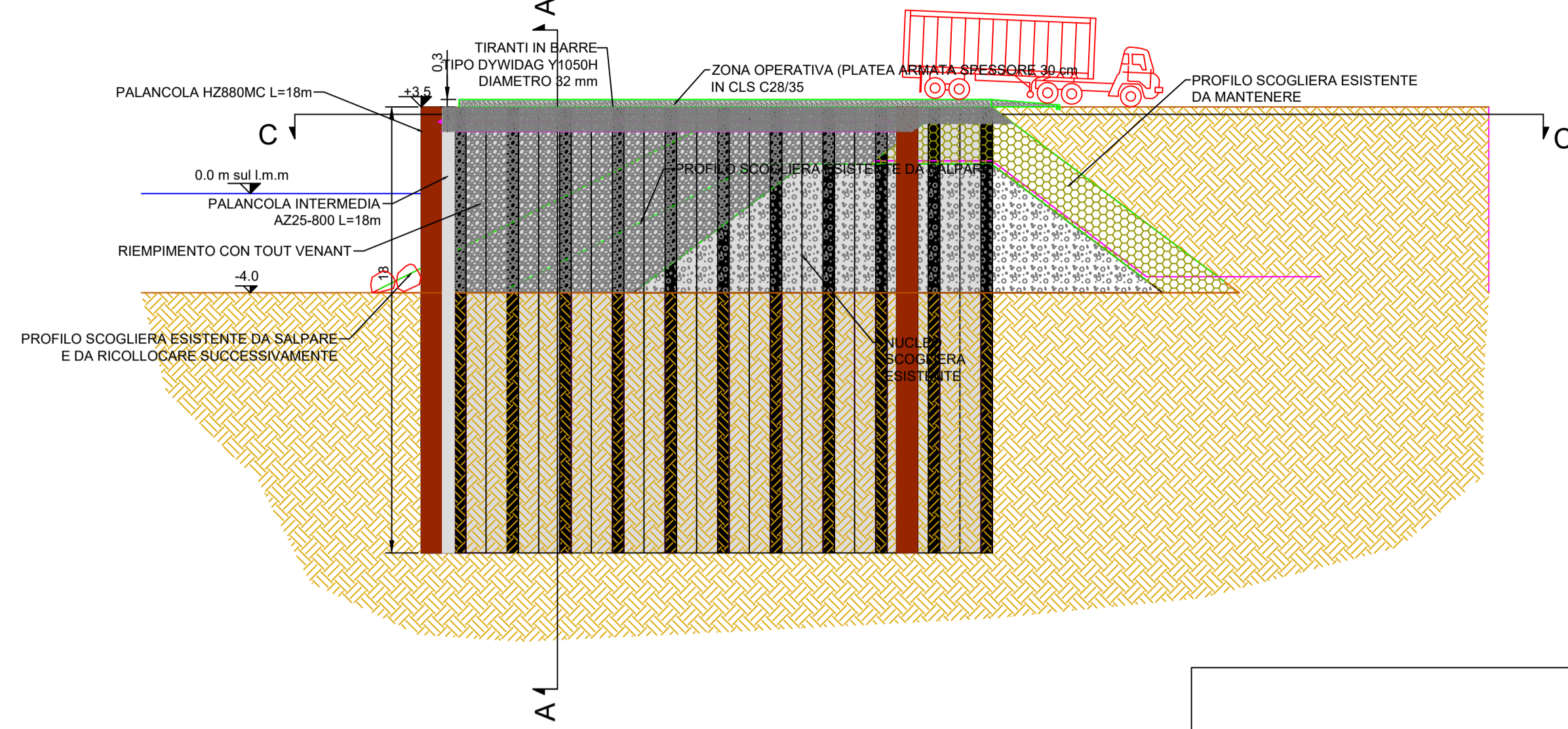
PLANIMETRIA PIARDA

SCALA 1:200



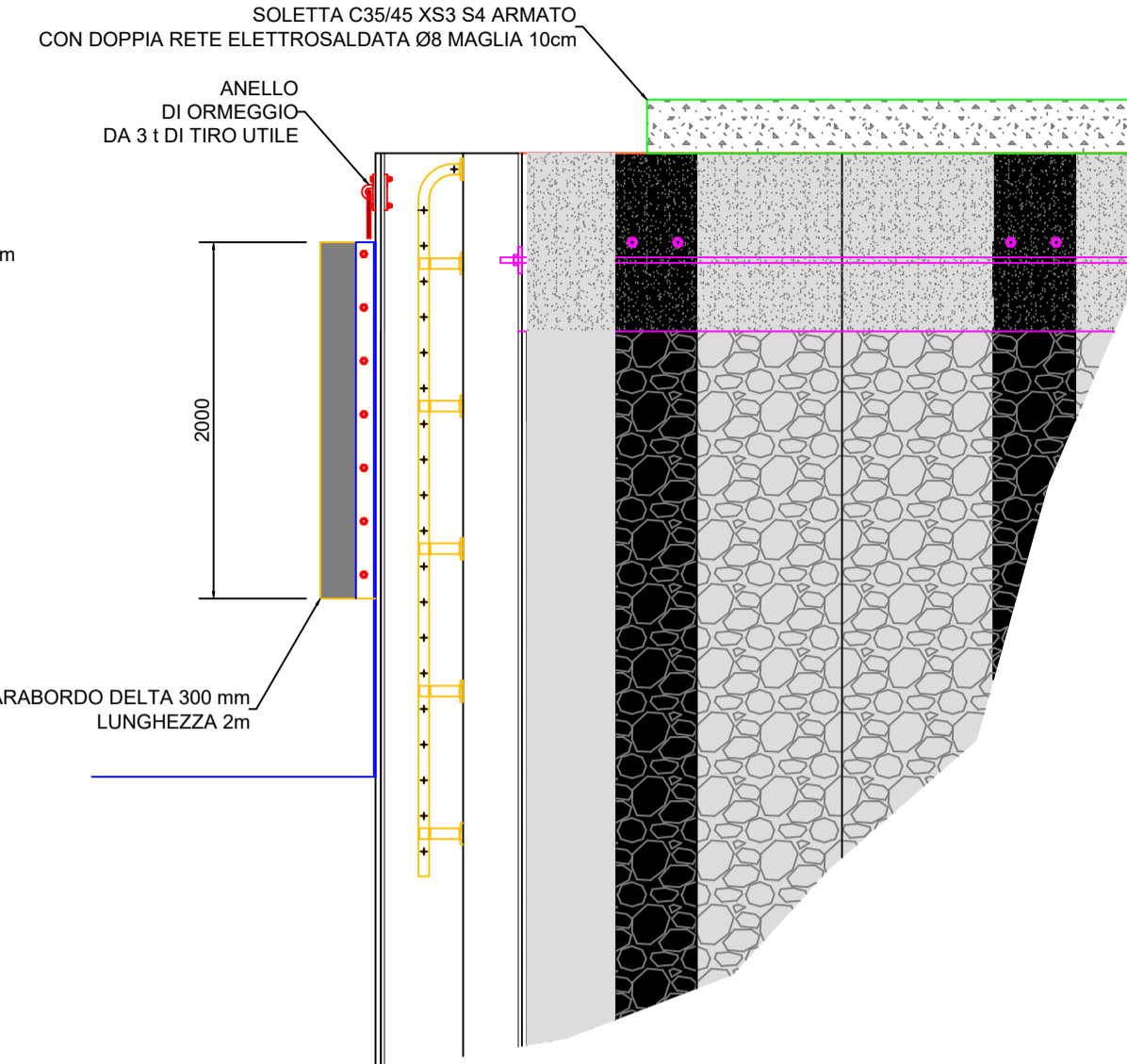
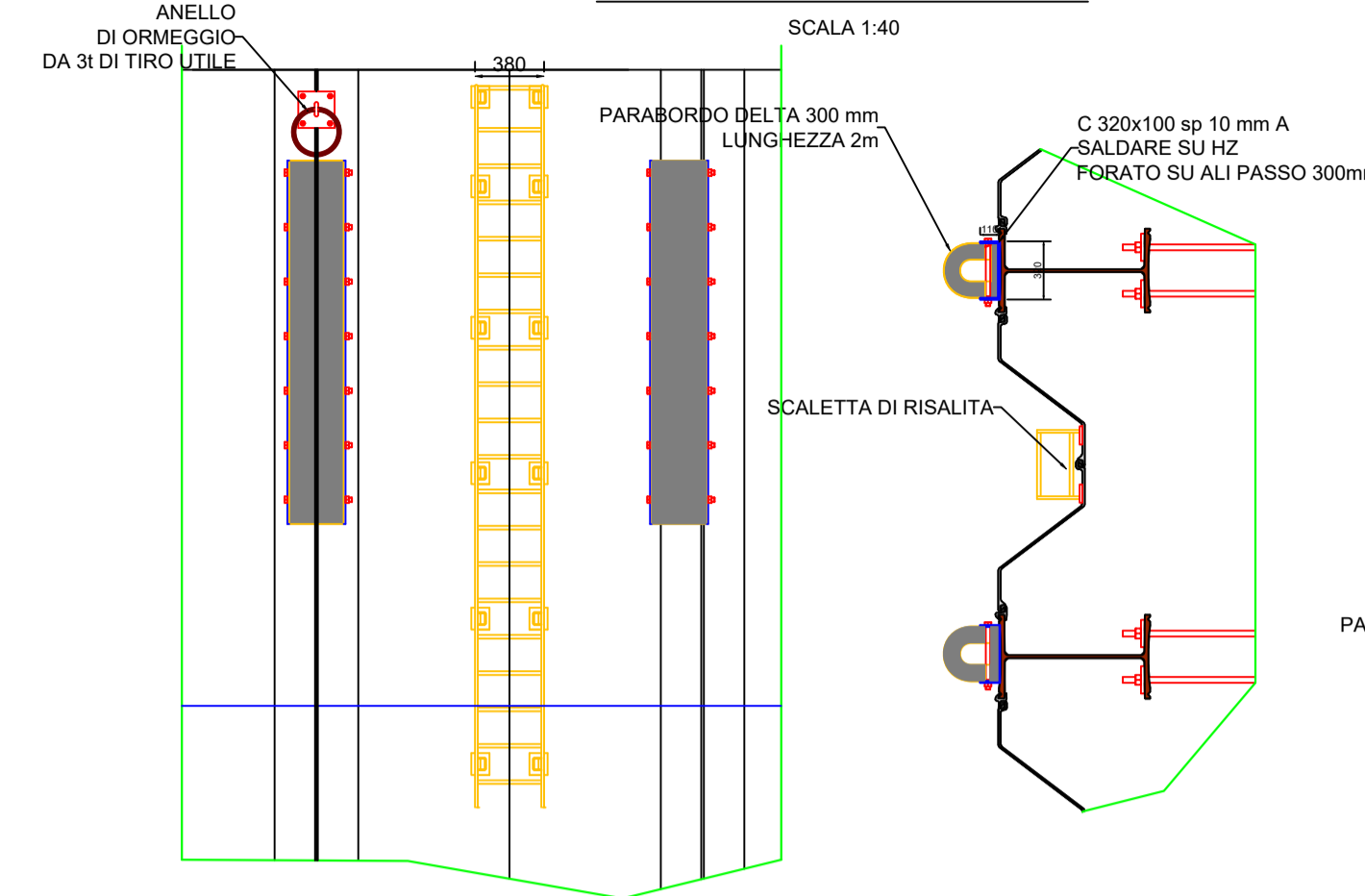
SEZIONE B-B

SCALA 1:200



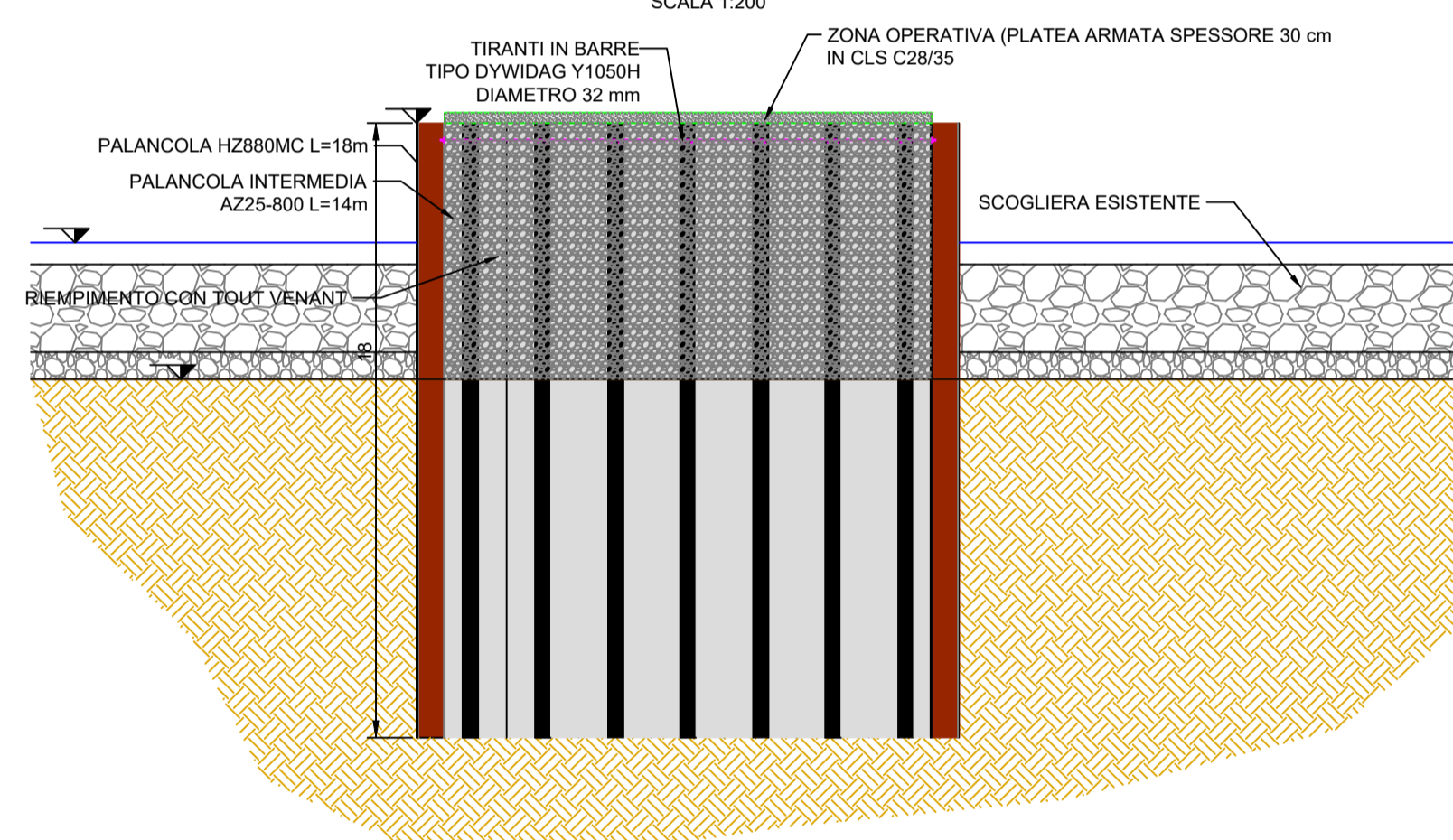
PARTICOLARE PARABORDI E SCALETTE DI RISALITA

SCALA 1:40



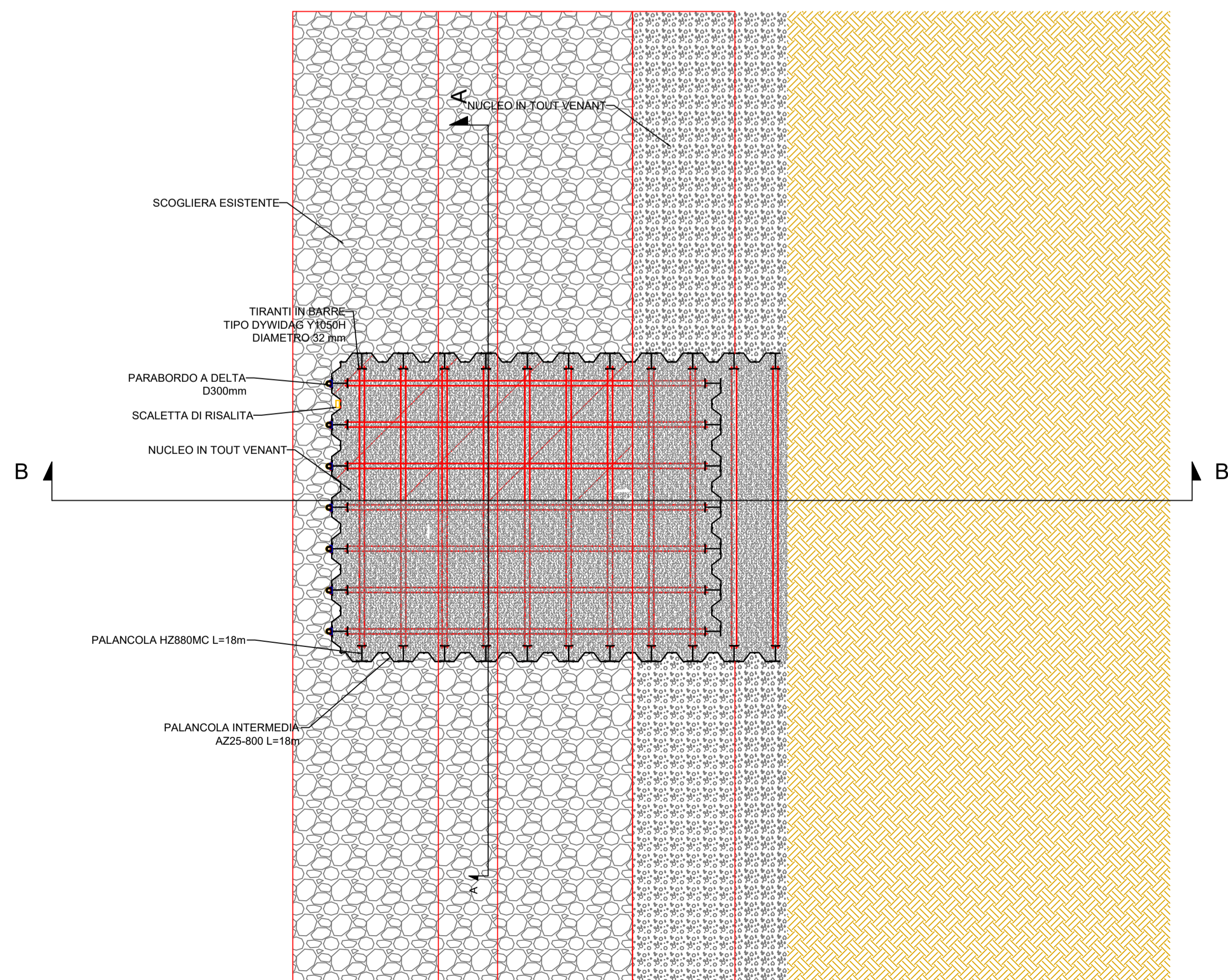
SEZIONE A-A

SCALA 1:200



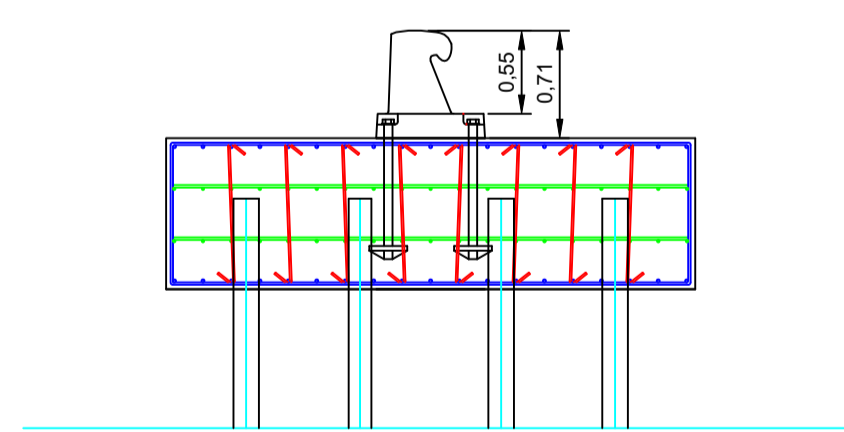
SEZIONE C-C

SCALA 1:200



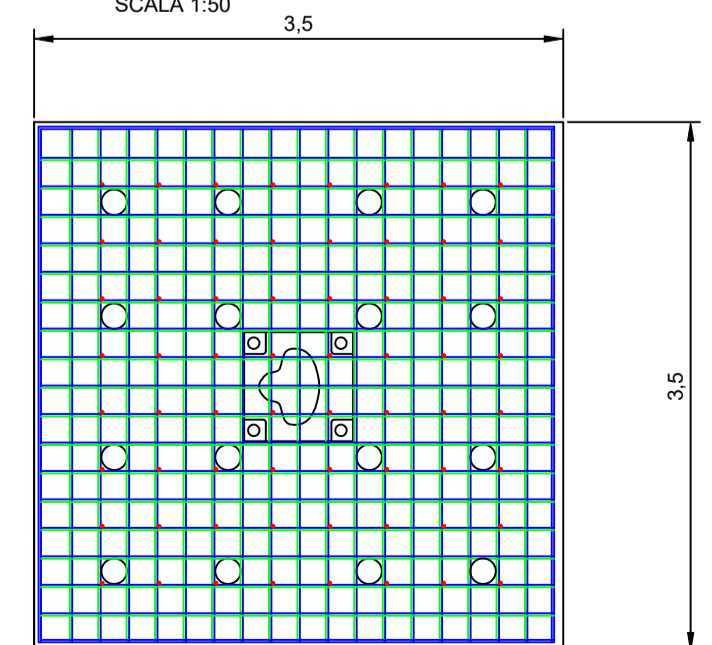
SEZIONE LATERALE

SCALA 1:50



PIANTA ARMATURE

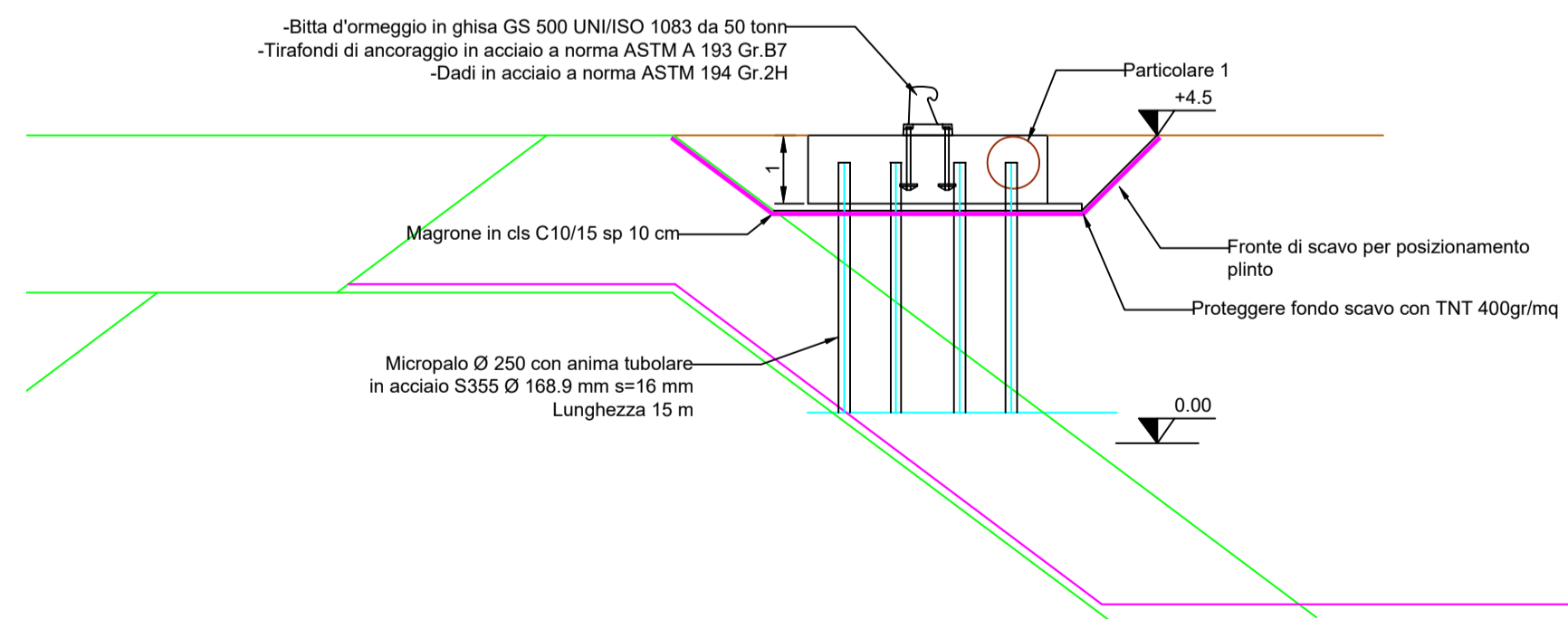
SCALA 1:50



PER IL POSIZIONAMENTO DELLE BITTE VEDERE ELABORATO 13-20-CURV-PD-T06-00

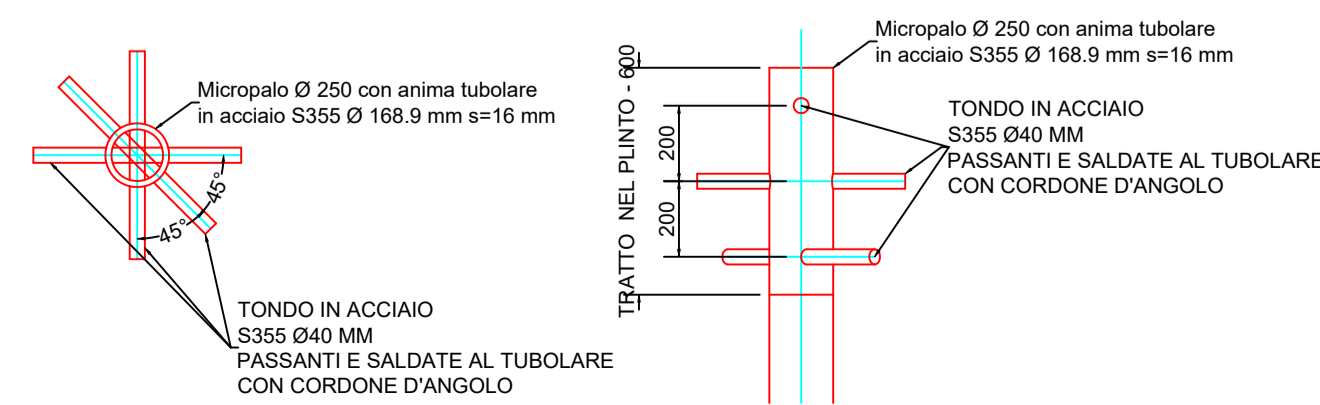
BITTA DI ORMEGGIO

SCALA 1:100



PARTICOLARE 1

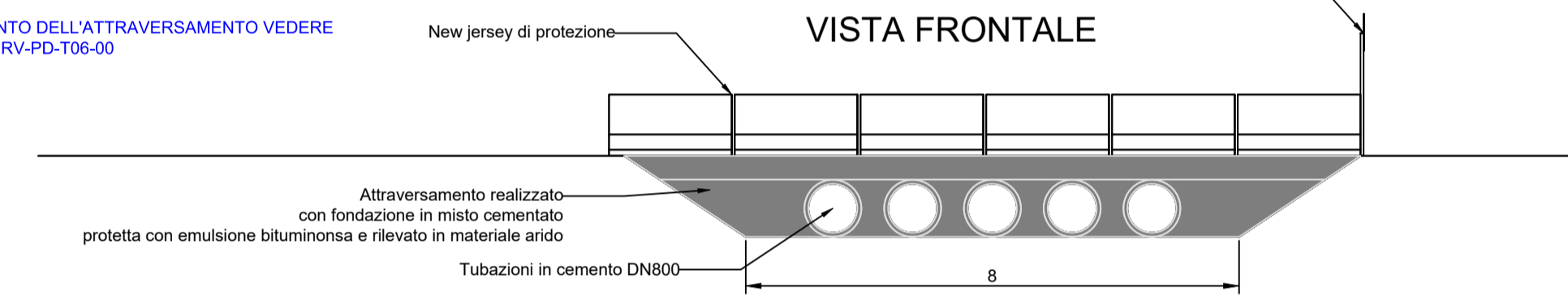
SCALA 1:20



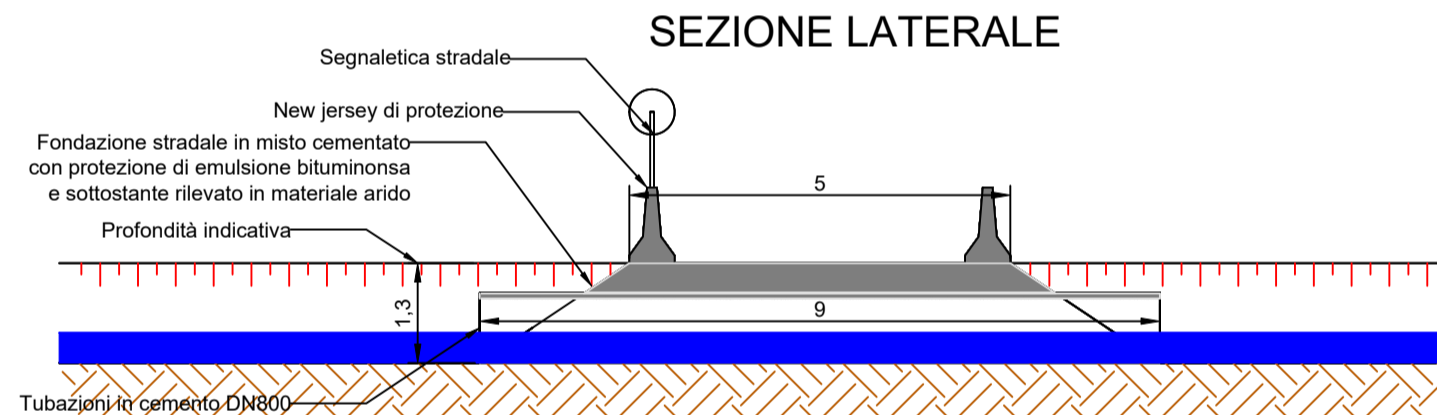
ATTRAVERSAMENTO FOSSO

SCALA 1:100

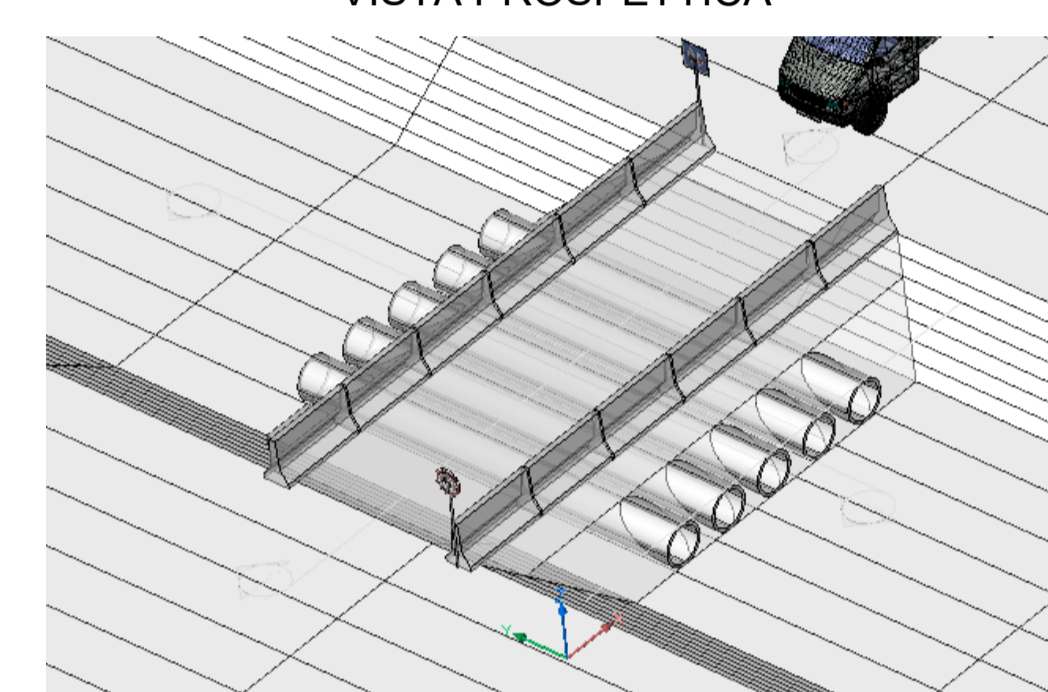
PER IL POSIZIONAMENTO DELL'ATTRAVERSAMENTO VEDERE ELABORATO 13-20-CURV-PD-T06-00



SEZIONE LATERALE



VISTA PROSPETTICA



TIPO: PROGETTO DEFINITIVO				
TITOLO: RIFIORIMENTO DELLA DIGA CURVILINEA DEL PORTO DI LIVORNO				
OGGETTO: PARTICOLARI PIARDA DI CARICO, BITTE ED ATTRAVERSAMENTO CANALE				
Progettazione Direzione Infrastrutture Livorno e Capraia ing. Pietro Chiavaccini				
Responsabile Unico del Procedimento: Dott.Ing. ENRICO PRIBAZ				
FORMATO/FORMAT	SCALA/SCALE	COG. ELABORATO	DESEGNO N./DRAWING No.	TAV/PLATE No.
1091x594	VARIE	13-20-CURV-PD-T05-00	13-20-CURV-PD-T05-00-particolari.dwg	T05
0	Giù. 2020	PRIMA EMISSIONE	PC	PC
REV.	DATA/DATE	DESCRIZIONE/DESCRIPTION	ESEGUITO/BY	CONTR./CHKD
				EP