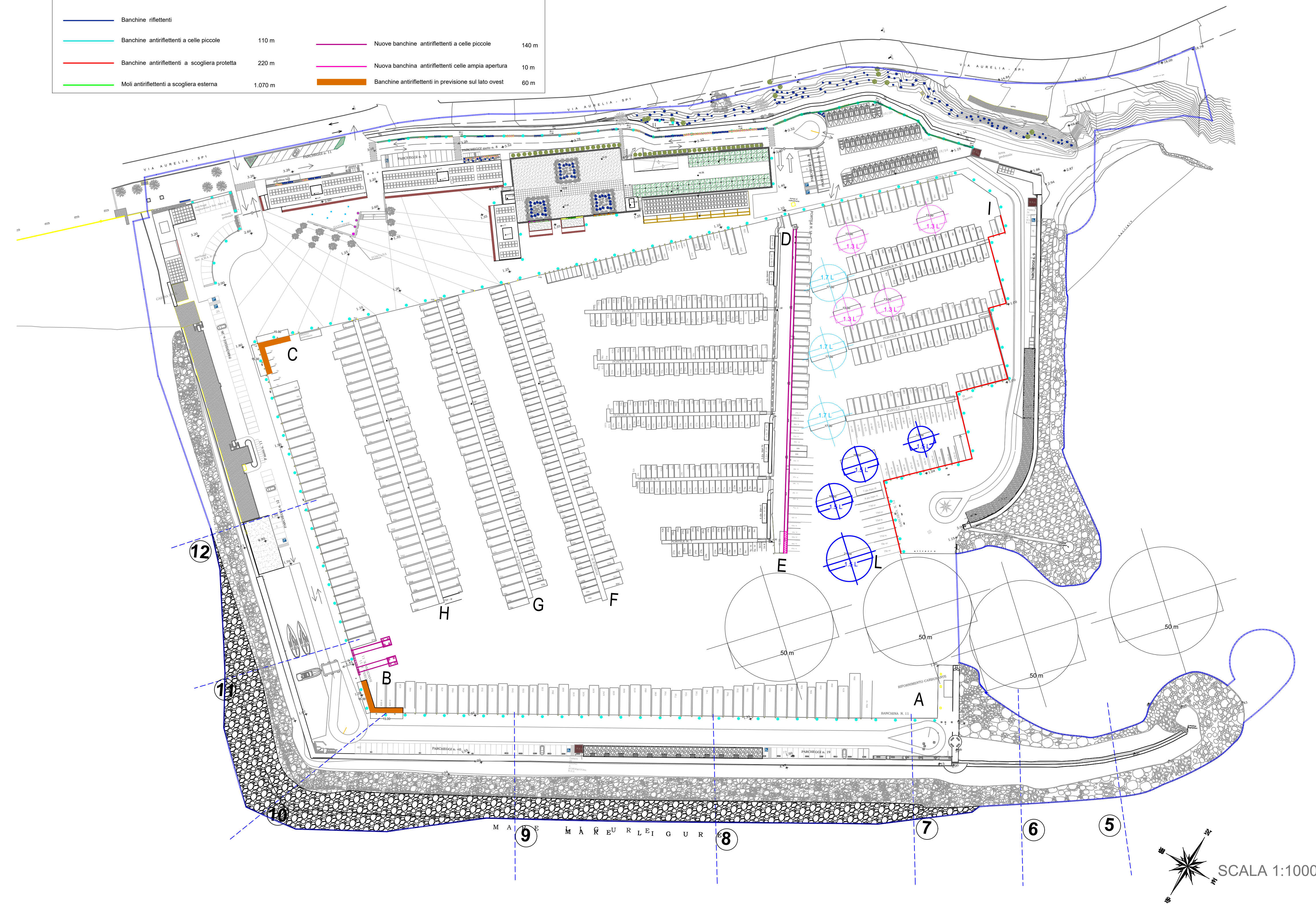
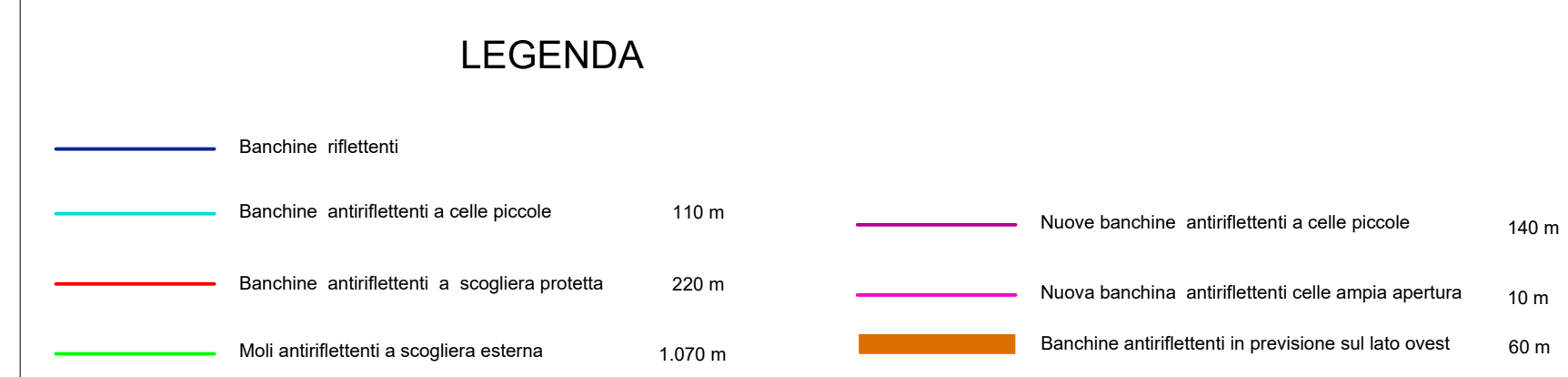
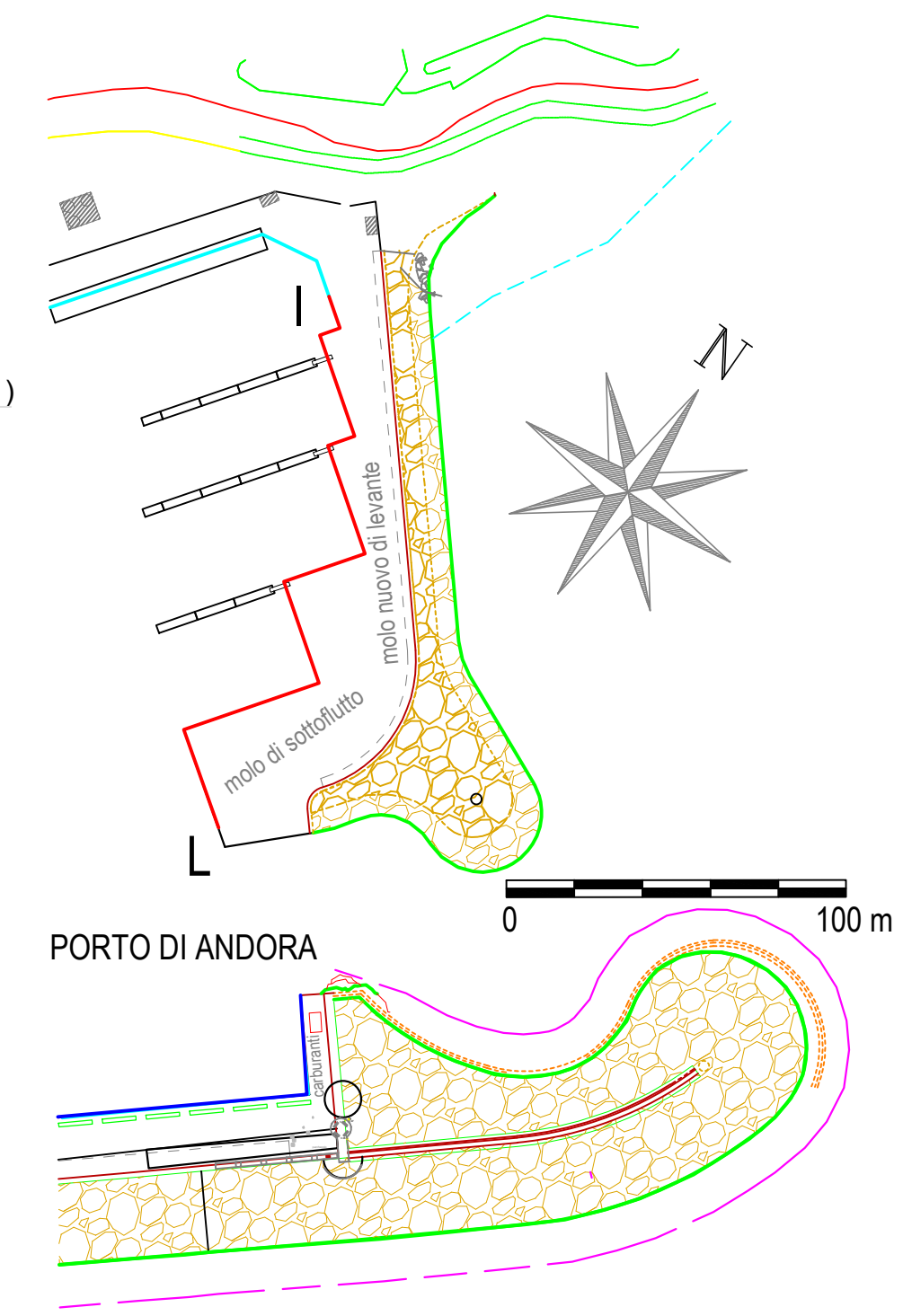
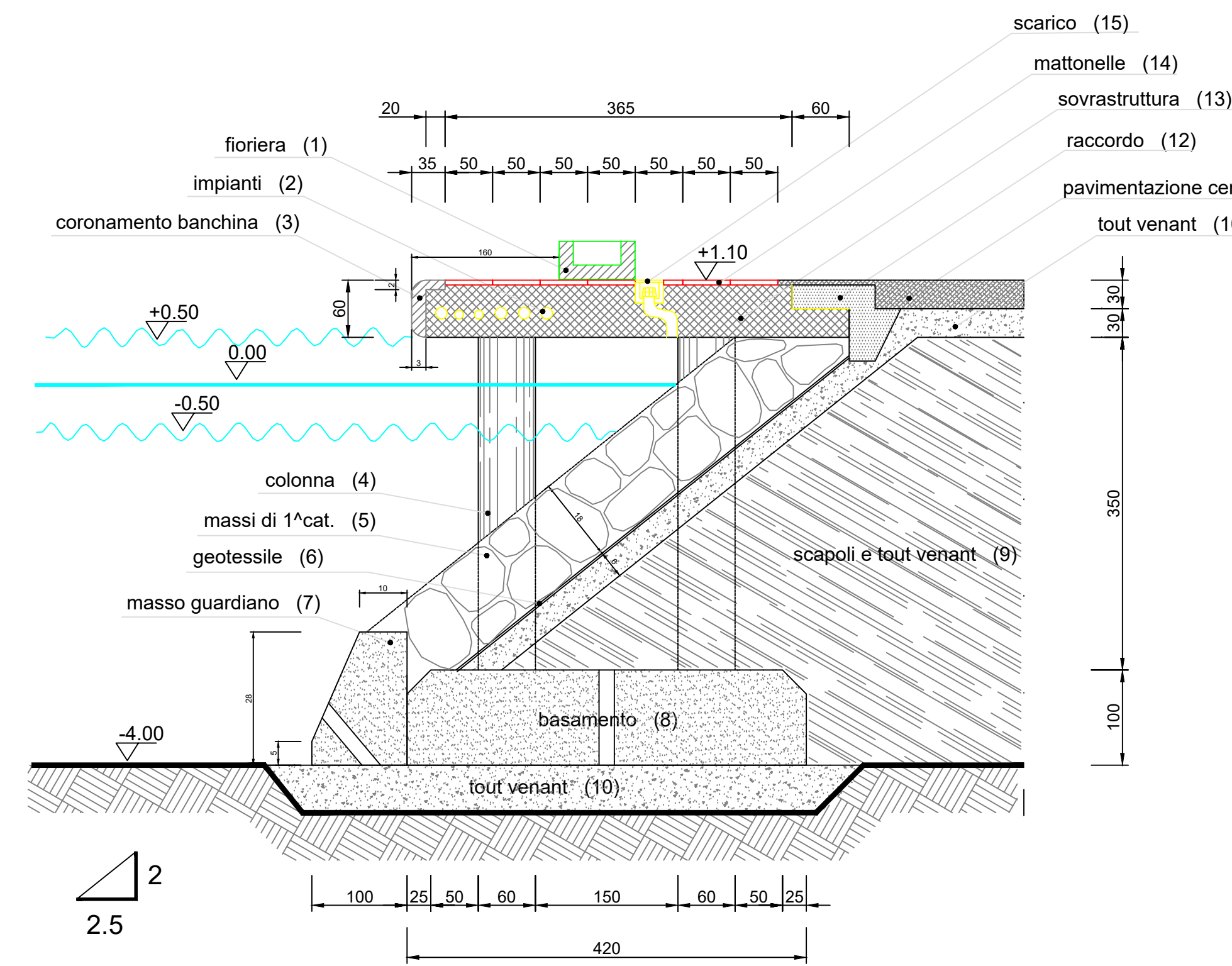
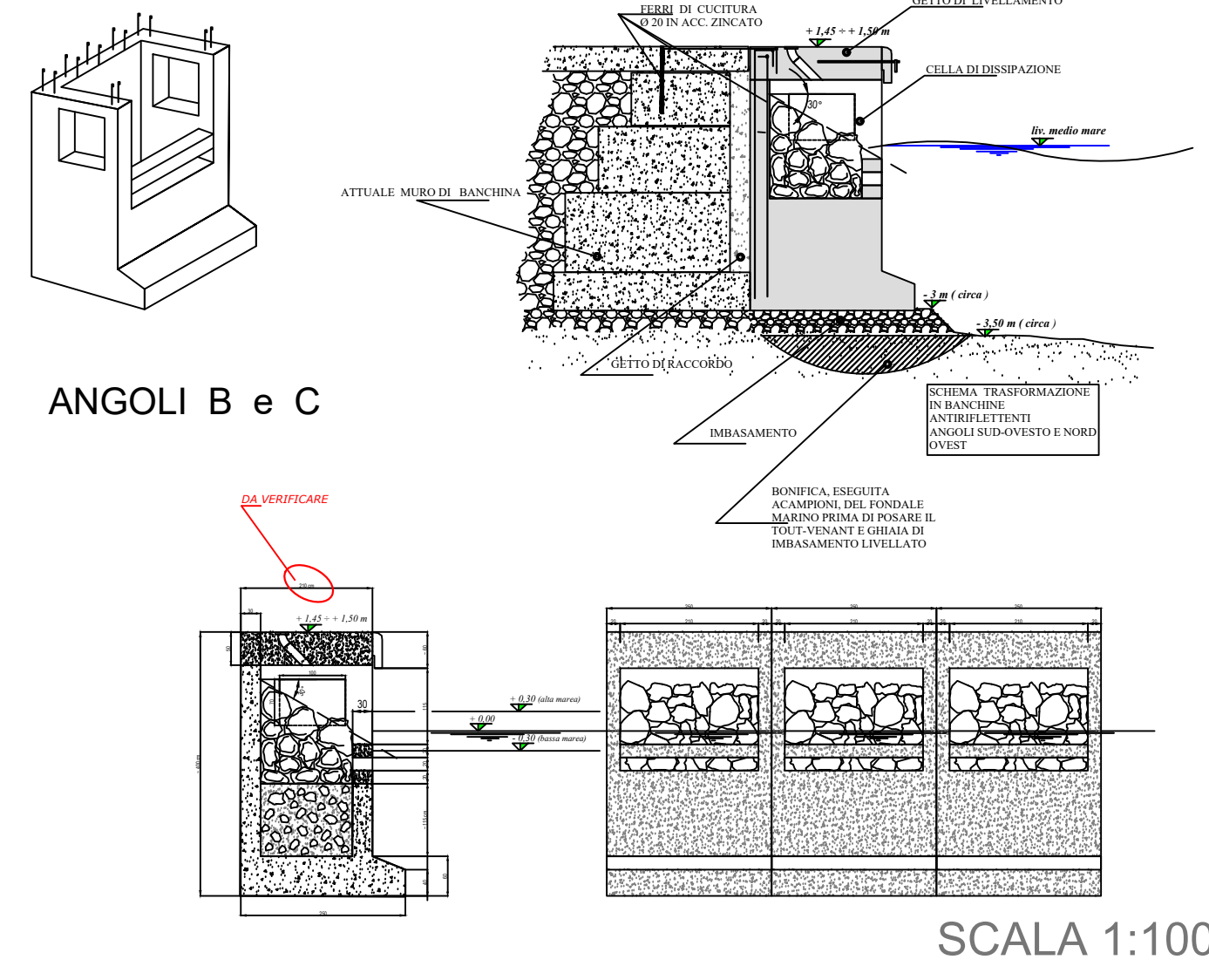


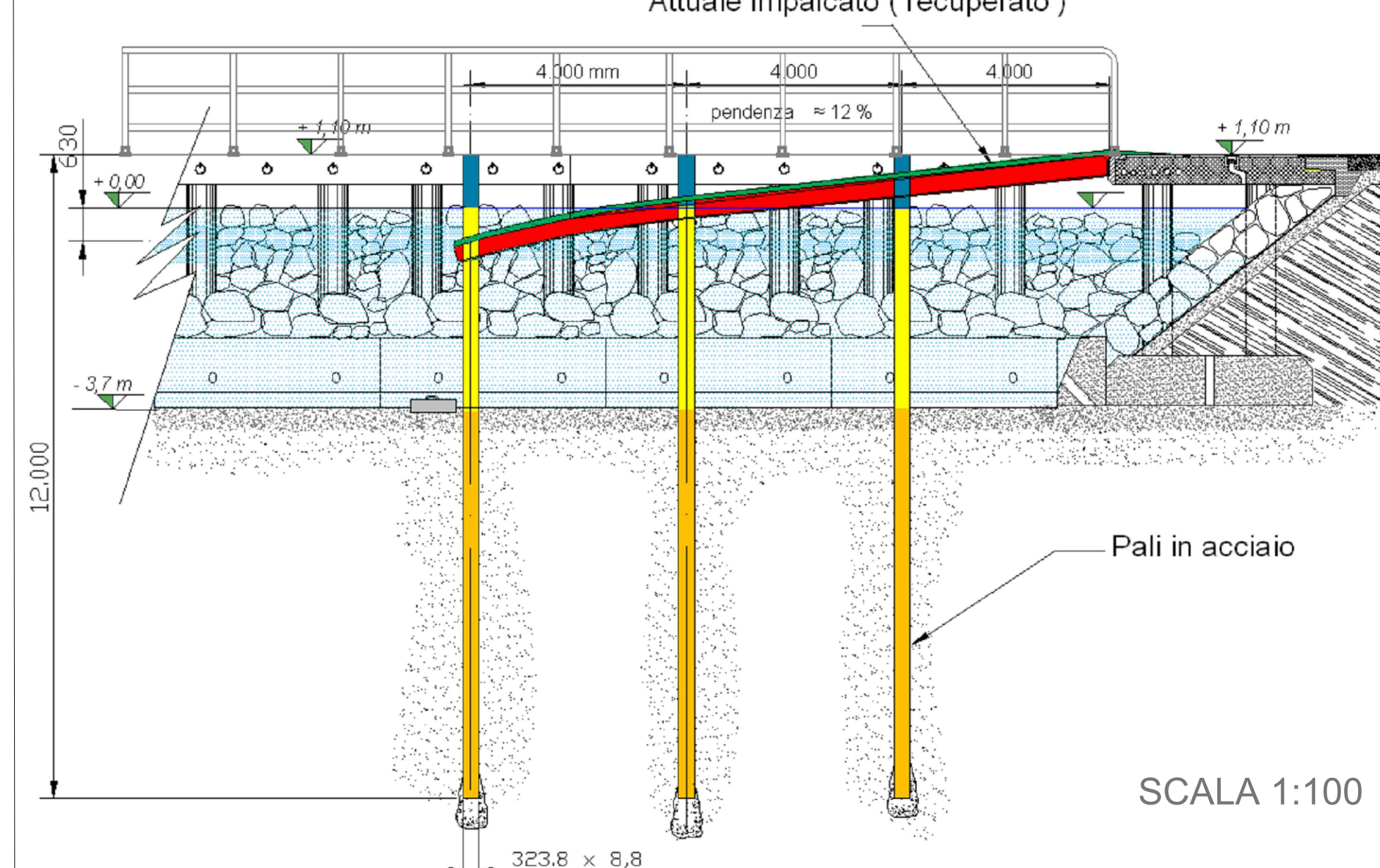
SEZIONE TIPO BANCHINA RIFLETTENTE (molo sottoflutto) TRATTO I-L ESISTENTE



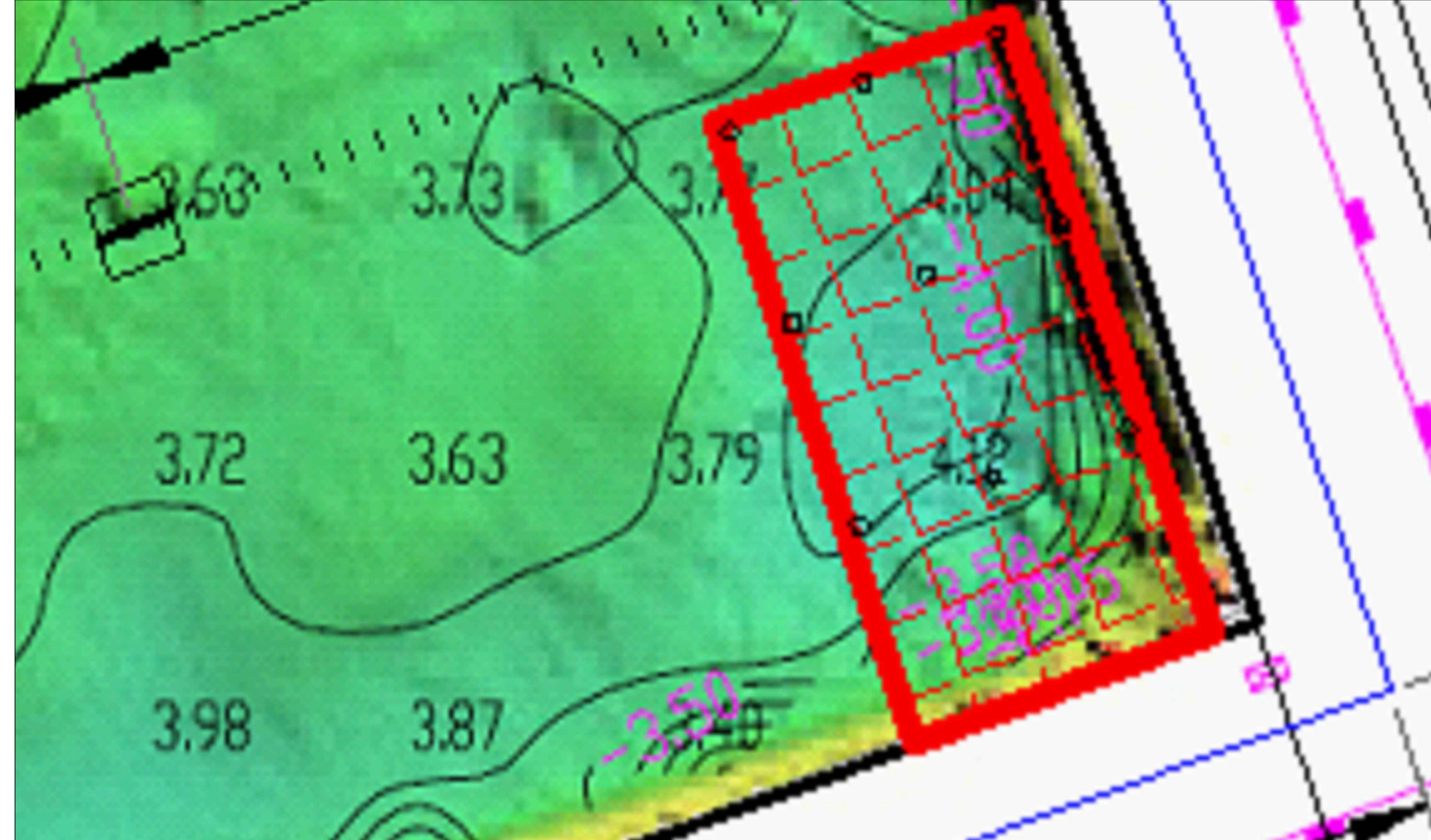
SCHEMA DI BANCHINA ANTIRIFLETTENTE



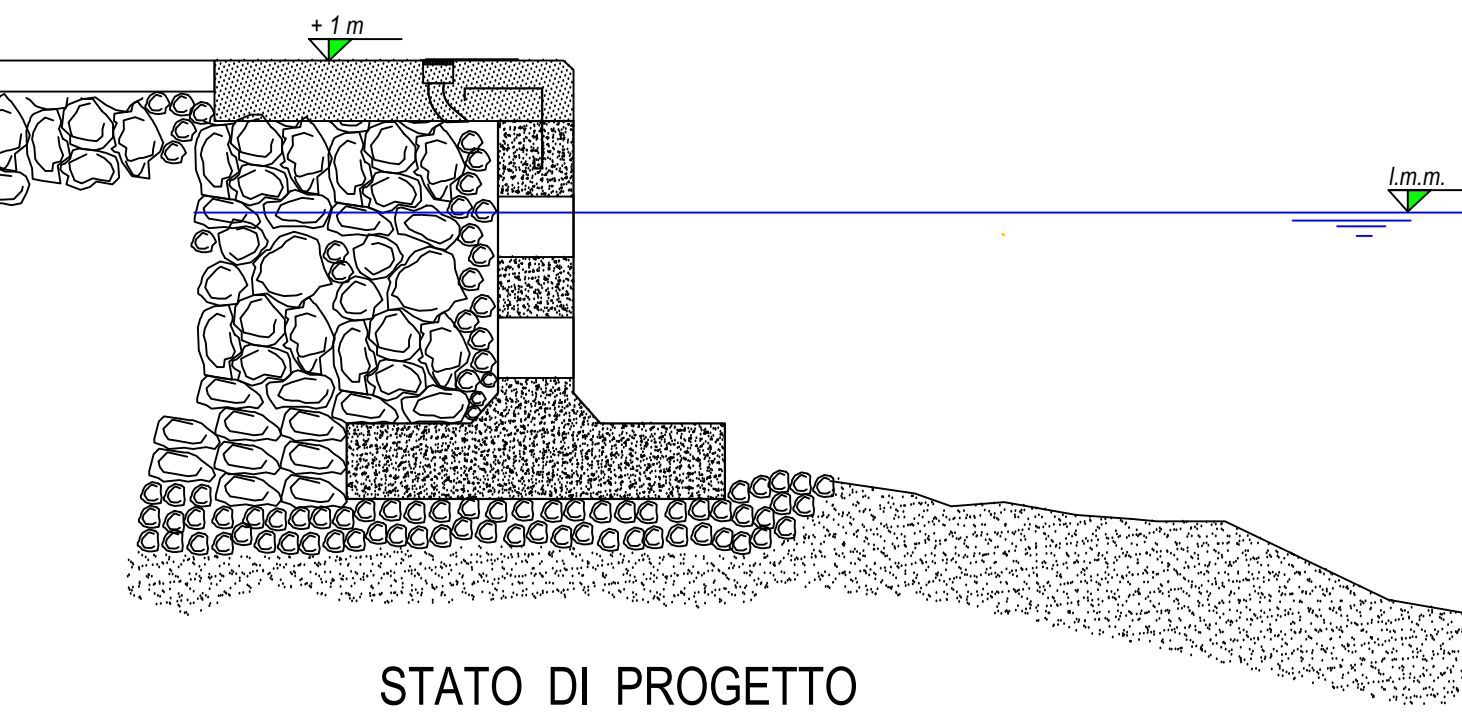
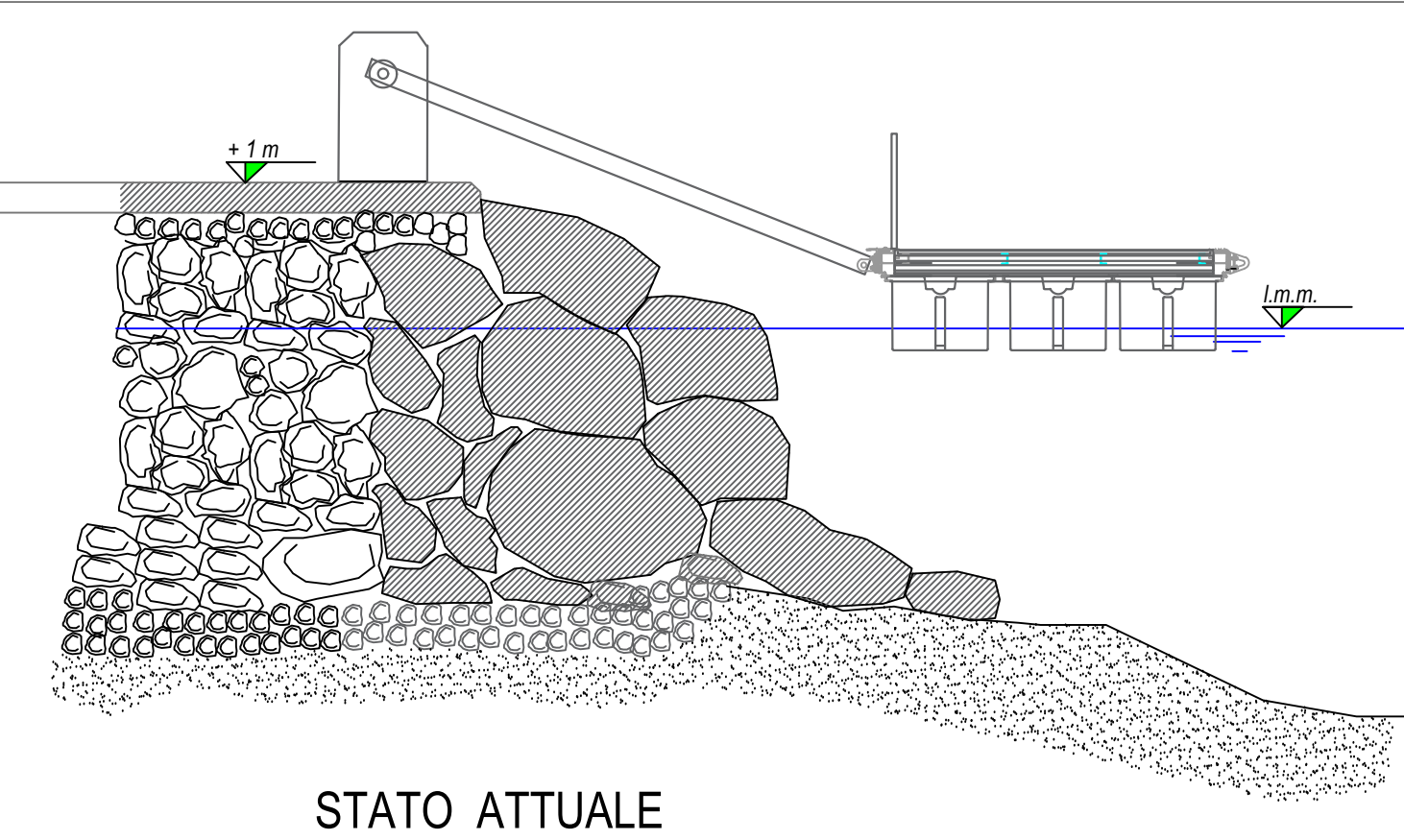
Scivolo



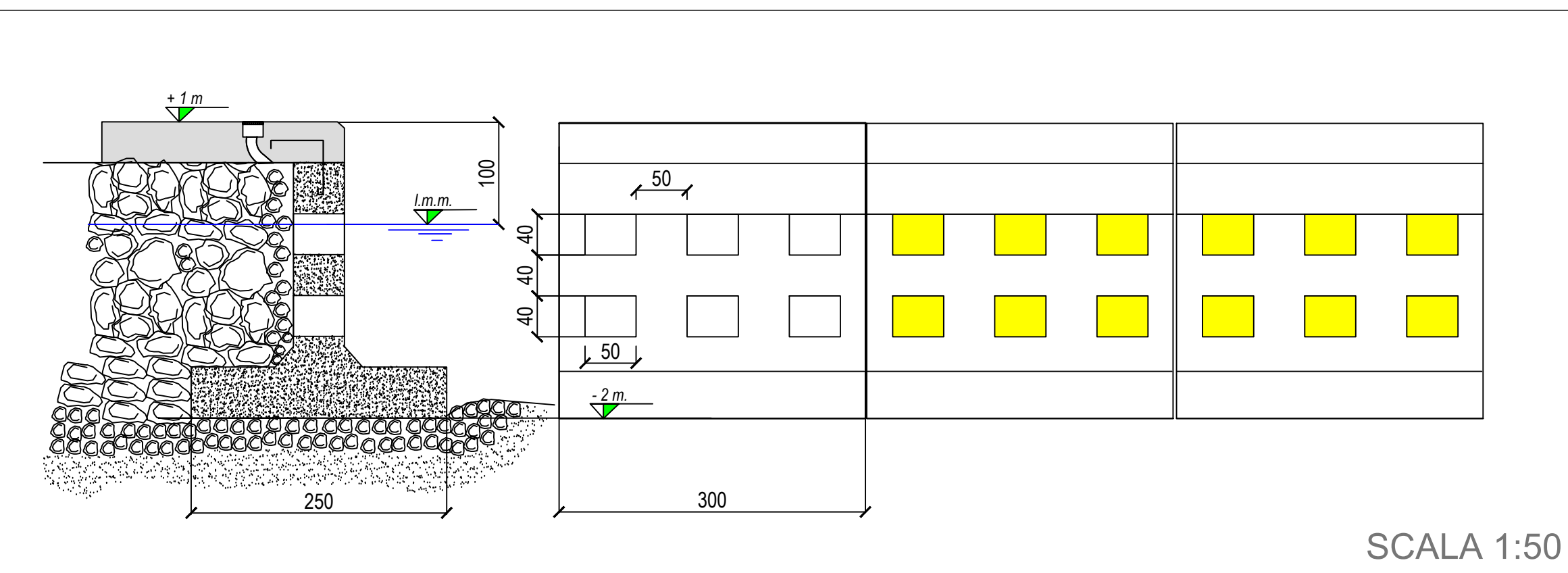
Scivolo su rilievo batimetrico



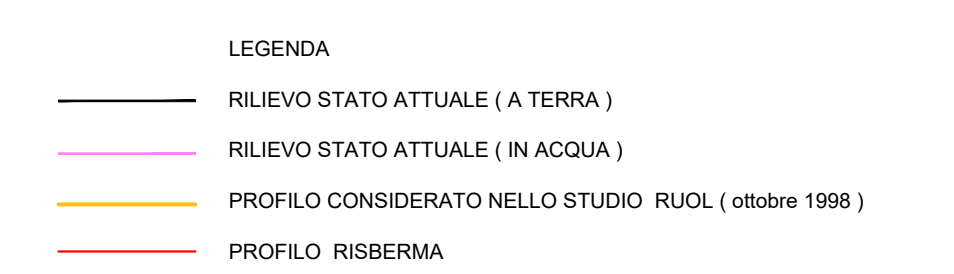
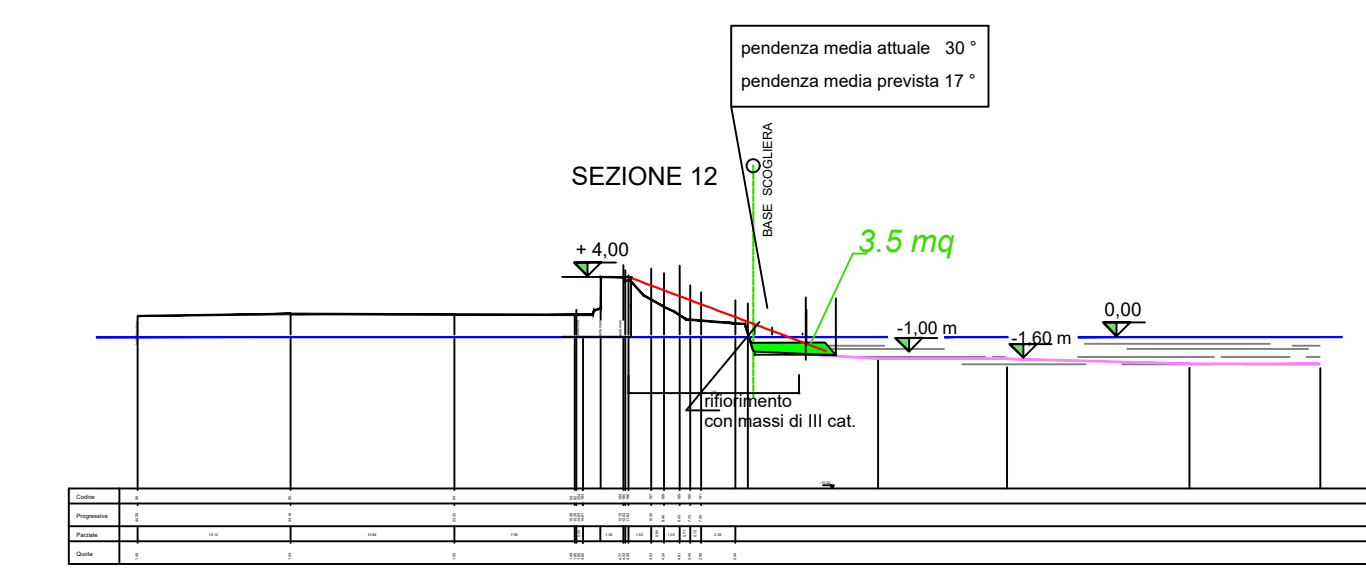
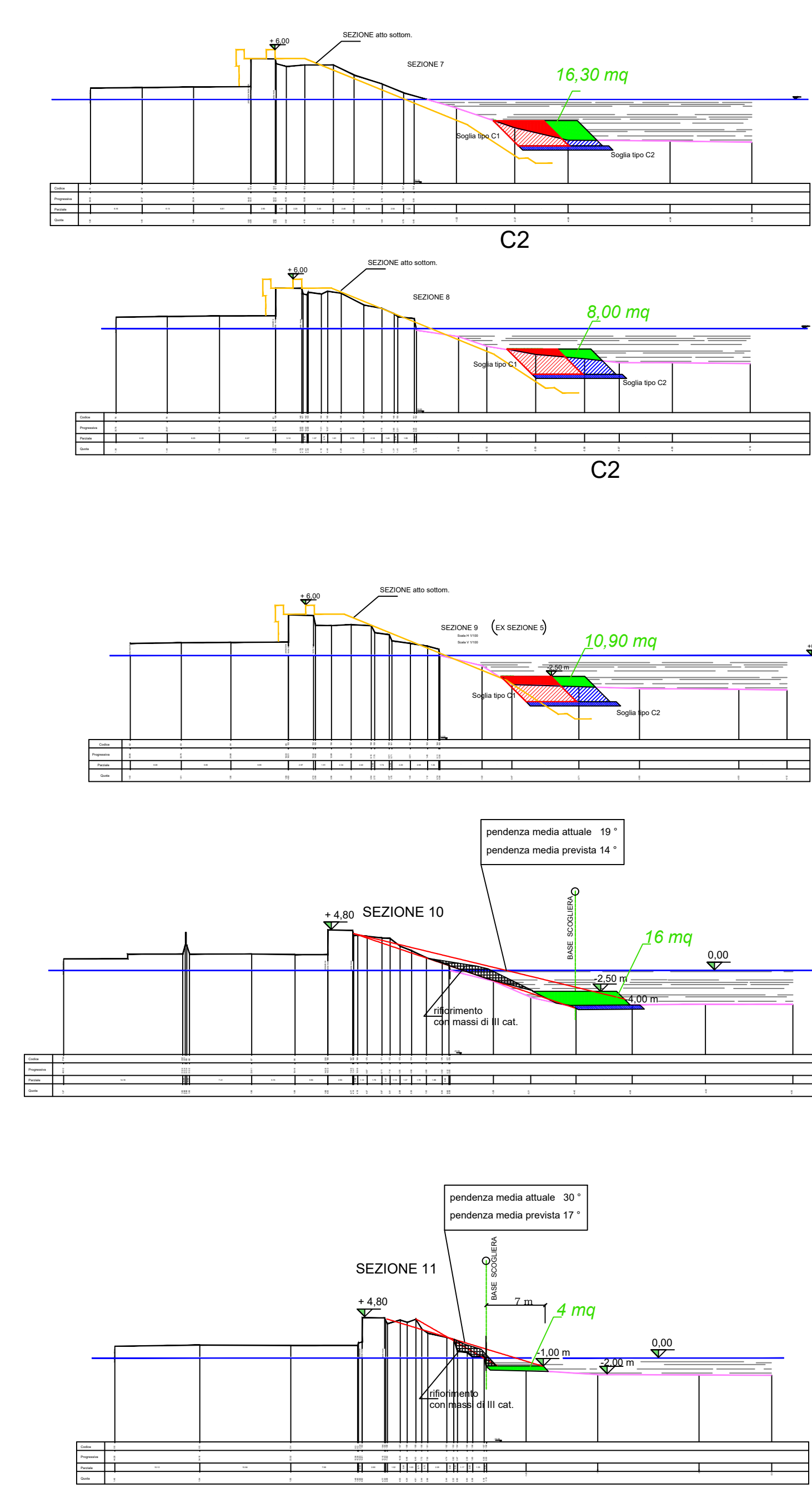
SEZIONE TIPO BANCHINA DE SCALA 1:50



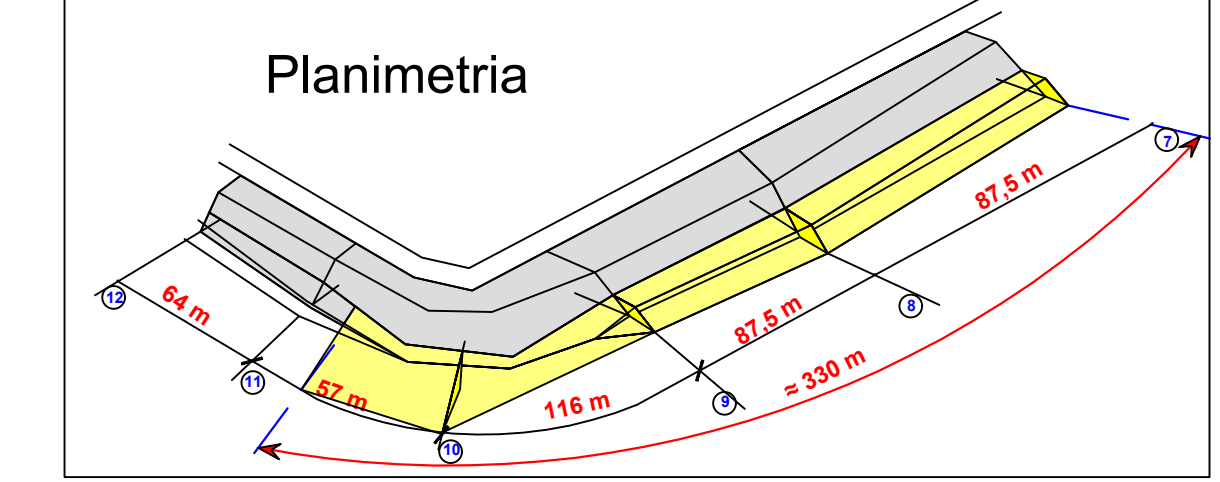
SEZIONE TIPO E VISTA FRONTALE BANCHINA DE



Confronto sezioni diga



SEZIONE	mq	distanza	mc
7	16,30	87,5	1063,13
8	8,00	87,5	626,88
9	10,90	118	1380,4
10	12,90	57	367,65
11	4	64	256
12	3,5		94,5
Totale mc			3.989,56
Totale tonnellato (L <sub>0</sub> = 0,75, γ = 2,6 t/mc)			7.777,70
Prezzo a €/t (massi 3° cat.)			72,08
Importo di massima per adeguamento scogliera			€ 660.616
Spese tecniche, varie e imprevisti			€ 45.000
Totale			€ 605.616



COMUNE DI ANDORA  
PROVINCIA DI SAVONA



PUBBLICAZIONE DELLO S.U.A. APPROVATO CON PROVVEDIMENTO FINALE IN DATA 16/03/2010 - DISTRETTO DI TRASFORMAZIONE TR-CO2 IN AGGIORNAMENTO AL PUC

oggetto PROGETTO - OPERE IDRAULICHE A MARE

Scala varie

Data Maggio 2020

Progettisti Arch. Paolo Ghione  
Geom. Anna Lisa Borghino Arch. Antonella Nabone Arch. Isabella Rabellino

revisioni	data	note	Tavola
1	Giugno 2020	Banchina antiriflettente	anodi B e C
2	Maggio 2020	Modifiche coordinate dei servizi	
3			
4			
5			

15