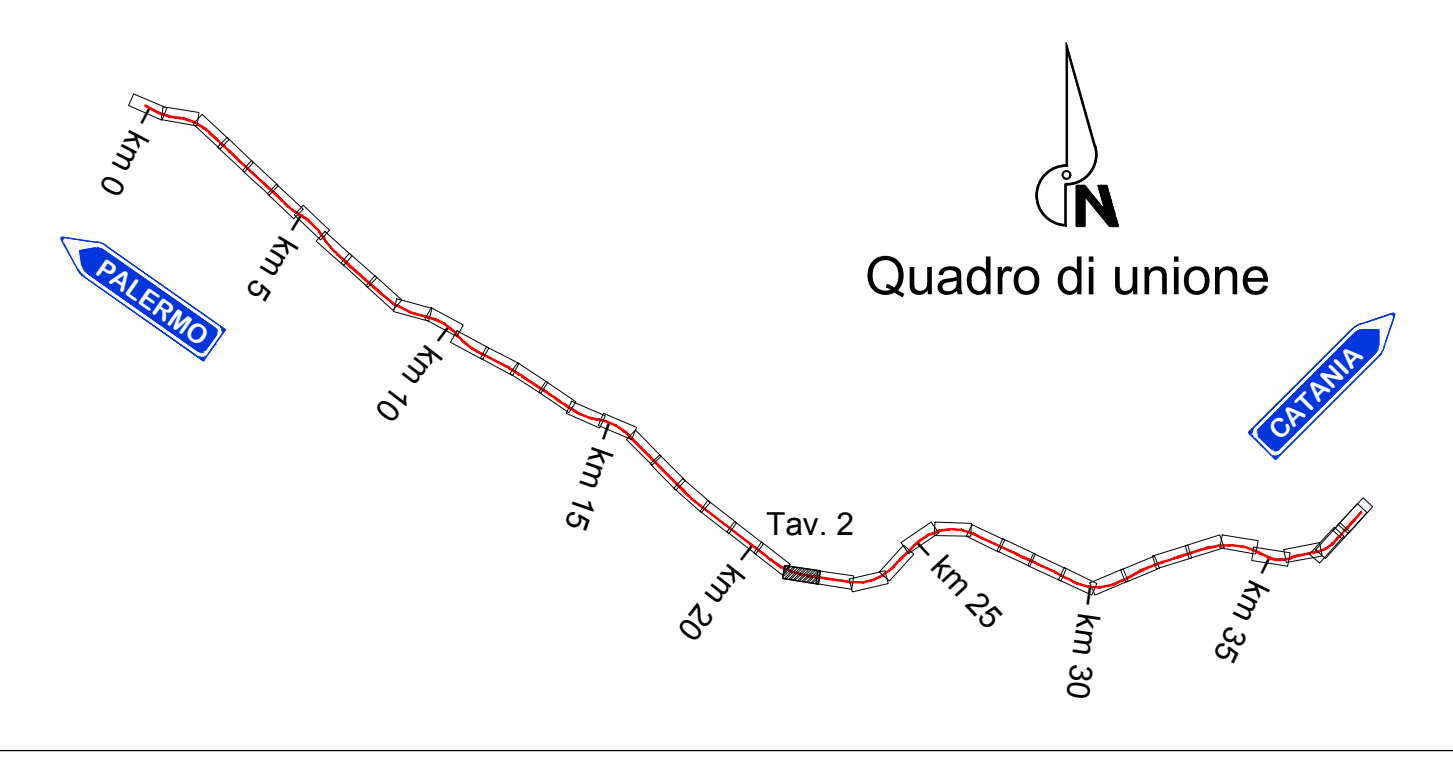
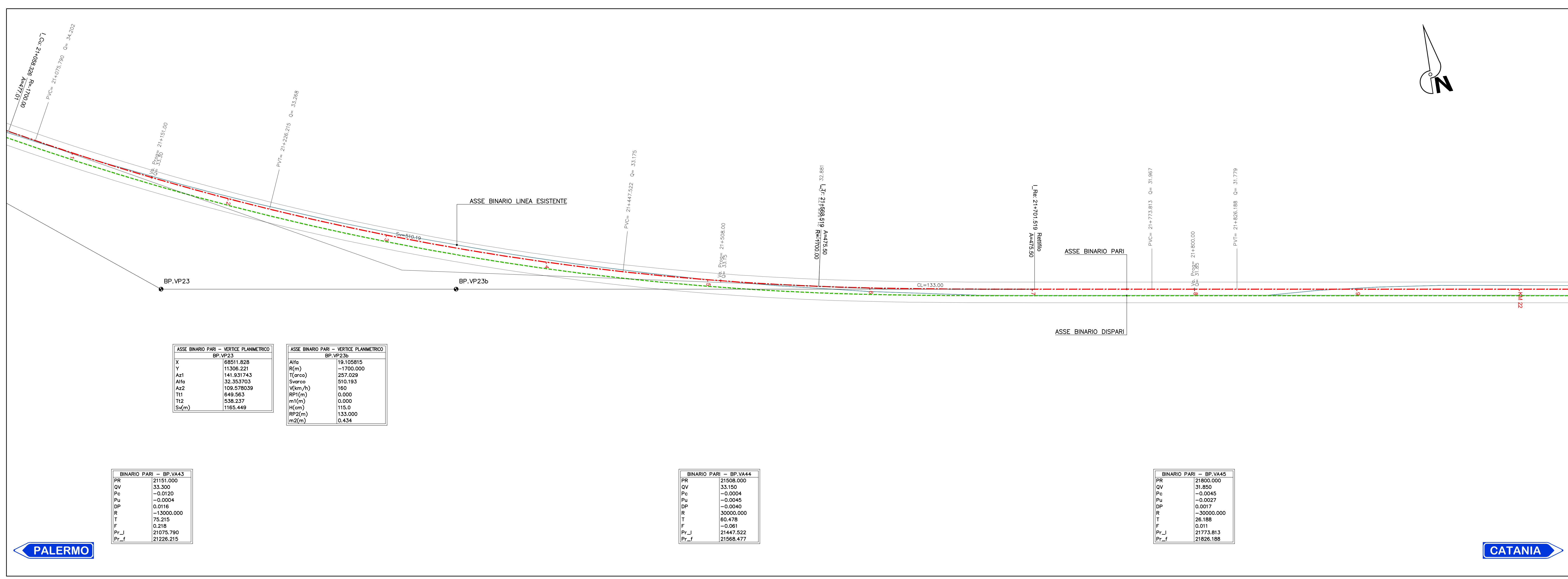
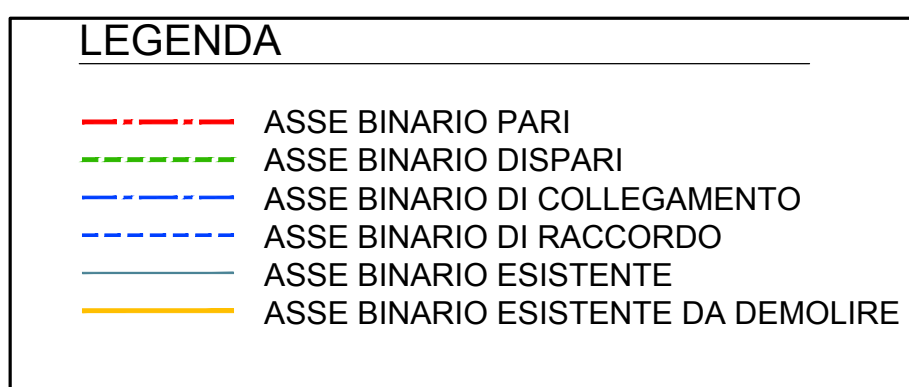


PROGRESSIVE	21100.00	21125.00	21150.00	21175.00	21200.00	21225.00	21250.00	21275.00	21300.00	21325.00	21350.00	21375.00	21400.00	21425.00	21450.00	21475.00	21500.00	21525.00	21550.00	21575.00	21600.00	21625.00	21650.00	21675.00	21700.00	21725.00	21750.00	21775.00	21800.00	21825.00	21850.00	21875.00	21900.00	21925.00	21950.00	21975.00	22000.00																																																																																																																																																																																																																																																																																																																																																																																														
QUOTE PROGETTO	33.834	33.705	33.524	33.339	33.106	32.869	32.594	32.248	31.837	31.227	30.426	29.321	27.914	26.205	24.192	21.875	19.254	16.329	13.100	9.569	5.732	1.589	-0.860	-3.387	-5.912	-8.437	-10.962	-13.487	-16.012	-18.537	-21.062	-23.587	-26.112	-28.637	-31.162	-33.687	-36.212	-38.737	-41.262	-43.787	-46.312	-48.837	-51.362	-53.887	-56.412	-58.937	-61.462	-63.987	-66.512	-69.037	-71.562	-74.087	-76.612	-79.137	-81.662	-84.187	-86.712	-89.237	-91.762	-94.287	-96.812	-99.337	-101.862	-104.387	-106.912	-109.437	-111.962	-114.487	-117.012	-119.537	-122.062	-124.587	-127.112	-129.637	-132.162	-134.687	-137.212	-139.737	-142.262	-144.787	-147.312	-149.837	-152.362	-154.887	-157.412	-159.937	-162.462	-164.987	-167.512	-170.037	-172.562	-175.087	-177.612	-180.137	-182.662	-185.187	-187.712	-190.237	-192.762	-195.287	-197.812	-200.337	-202.862	-205.387	-207.912	-210.437	-212.962	-215.487	-218.012	-220.537	-223.062	-225.587	-228.112	-230.637	-233.162	-235.687	-238.212	-240.737	-243.262	-245.787	-248.312	-250.837	-253.362	-255.887	-258.412	-260.937	-263.462	-265.987	-268.512	-271.037	-273.562	-276.087	-278.612	-281.137	-283.662	-286.187	-288.712	-291.237	-293.762	-296.287	-298.812	-301.337	-303.862	-306.387	-308.912	-311.437	-313.962	-316.487	-319.012	-321.537	-324.062	-326.587	-329.112	-331.637	-334.162	-336.687	-339.212	-341.737	-344.262	-346.787	-349.312	-351.837	-354.362	-356.887	-359.412	-361.937	-364.462	-366.987	-369.512	-372.037	-374.562	-377.087	-379.612	-382.137	-384.662	-387.187	-389.712	-392.237	-394.762	-397.287	-399.812	-402.337	-404.862	-407.387	-409.912	-412.437	-414.962	-417.487	-420.012	-422.537	-425.062	-427.587	-430.112	-432.637	-435.162	-437.687	-440.212	-442.737	-445.262	-447.787	-450.312	-452.837	-455.362	-457.887	-460.412	-462.937	-465.462	-467.987	-470.512	-473.037	-475.562	-478.087	-480.612	-483.137	-485.662	-488.187	-490.712	-493.237	-495.762	-498.287	-500.812	-503.337	-505.862	-508.387	-510.912	-513.437	-515.962	-518.487	-521.012	-523.537	-526.062	-528.587	-531.112	-533.637	-536.162	-538.687	-541.212	-543.737	-546.262	-548.787	-551.312	-553.837	-556.362	-558.887	-561.412	-563.937	-566.462	-568.987	-571.512	-574.037	-576.562	-579.087	-581.612	-584.137	-586.662	-589.187	-591.712	-594.237	-596.762	-599.287	-601.812	-604.337	-606.862	-609.387	-611.912	-614.437	-616.962	-619.487	-622.012	-624.537	-627.062	-629.587	-632.112	-634.637	-637.162	-639.687	-642.212	-644.737	-647.262	-649.787	-652.312	-654.837	-657.362	-659.887	-662.412	-664.937	-667.462	-669.987	-672.512	-675.037	-677.562	-680.087	-682.612	-685.137	-687.662	-690.187	-692.712	-695.237	-697.762	-700.287	-702.812	-705.337	-707.862	-710.387	-712.912	-715.437	-717.962	-720.487	-723.012	-725.537	-728.062	-730.587	-733.112	-735.637	-738.162	-740.687	-743.212	-745.737	-748.262	-750.787	-753.312	-755.837	-758.362	-760.887	-763.412	-765.937	-768.462	-770.987	-773.512	-776.037	-778.562	-781.087	-783.612	-786.137	-788.662	-791.187	-793.712	-796.237	-798.762	-801.287	-803.812	-806.337	-808.862	-811.387	-813.912	-816.437	-818.962	-821.487	-824.012	-826.537	-829.062	-831.587	-834.112	-836.637	-839.162	-841.687	-844.212	-846.737	-849.262	-851.787	-854.312	-856.837	-859.362	-861.887	-864.412	-866.937	-869.462	-871.987	-874.512	-877.037	-879.562	-882.087	-884.612	-887.137	-889.662	-892.187	-894.712	-897.237	-899.762	-902.287	-904.812	-907.337	-909.862	-912.387	-914.912	-917.437	-919.962	-922.487	-925.012	-927.537	-930.062	-932.587	-935.112	-937.637	-940.162	-942.687	-945.212	-947.737	-950.262	-952.787	-955.312	-957.837	-960.362	-962.887	-965.412	-967.937	-970.462	-972.987	-975.512	-978.037	-980.562	-983.087	-985.612	-988.137	-990.662	-993.187	-995.712	-998.237	-1000.762
ETTOMETRICHE	1+1000	1+125	1+150	1+175	1+200	1+225	1+250	1+275	1+300	1+325	1+350	1+375	1+400	1+425	1+450	1+475	1+500	1+525	1+550	1+575	1+600	1+625	1+650	1+675	1+700	1+725	1+750	1+775	1+800	1+825	1+850	1+875	1+900	1+925	1+950	1+975	2+000																																																																																																																																																																																																																																																																																																																																																																																														
SOPRAELEVAZIONE	-																																																																																																																																																																																																																																																																																																																																																																																																																																		
ANDAMENTO PLANIMETRICO	R=1700.00 Lc=510.19																																																																																																																																																																																																																																																																																																																																																																																																																																		



COMMITTENTE: **RFI** (R.F.E. - RIFORMA FERROVIARIA ITALIANA) GRUPPO FERROVIE DELLO STATO

DIREZIONE LAVORI: **ITALFERR** (GRUPPO FERROVIE DELLO STATO)

APPALTATORE: **salini impregio** (MANDATARIA), **ASTALDI** (MANDATARI)

PROGETTAZIONE: **TECH PROJECT** (MANDATARIA), **Lombardi** (MANDATARI)

PROGETTO ESECUTIVO DI MODIFICA  
**DIRETTRICE FERROVIARIA MESSINA - CATANIA - PALERMO**  
**RADDOPPIO DELLA TRATTA BICOCCA - CATENANUOVA**  
**VARIANTE OPERE DI RISOLUZIONE CRITICITÀ IDRAULICA SIMETO**  
 DISEGNO

IF - INFRASTRUTTURA  
 IF01 - Elaborati generali  
 Profilo longitudinale e Planimetria di tracciamento Asse Pari  
 Tav. 2

APPALTATORE	PROGETTAZIONE	SCALA:
DIRETTORE TECNICO Ing. M. RUFFO	DIRETTORE DELLA PROGETTAZIONE Ing. G. TANZI	1:1000/100

COMMESSA	LOTTO	FASE	ENTE TIPO DOC.	OPERA/DISCIPLINA	PROGR.	REV.
RS39	10	V	ZZ	PZ	IF01010	002 A

Rev.	Descrizione	Redatto	Data	Verificato	Data	Approvato	Data	Autorizzato	Data
A	EMISSIONE ESECUTIVA	G. Tanzi	Febbraio 2010	A. Neri	Febbraio 2010	G. Tanzi	Febbraio 2010	Ing. G. TANZI	

Foglio 2/10  
 File: RS39-10-V-ZZ-PZ-IF0100-002\_ADWG  
 n. Elab.

**BINARIO PARI - BP.VA43**

PR	21151.000
QV	33.300
Pc	-0.0100
Pu	-0.0004
DP	0.0116
R	-13000.000
T	75.215
F	0.218
Pv_J	21075.780
Pv_F	21228.215

**ASSE BINARIO PARI - VERTICE PLANIMETRICO BP.VP23**

X	68811.828
Y	11308.221
Ax1	141.931743
Ax2	32.353703
Ax3	109.575038
T11	849.563
T12	538.237
Sv(m)	1165.449

**ASSE BINARIO PARI - VERTICE PLANIMETRICO BP.VP23b**

Alfa	19.100815
R(m)	-1700.000
T(arco)	257.029
S(arco)	510.193
V(m/m)	160
RP1(m)	0.000
m(m)	0.000
H(cm)	115.0
RP2(m)	133.000
m2(m)	0.434

**BINARIO PARI - BP.VA44**

PR	21508.000
QV	33.150
Pc	-0.0004
Pu	-0.0045
DP	-0.0040
R	30000.000
T	60.478
F	-0.061
Pv_J	21447.522
Pv_F	21568.477

**BINARIO PARI - BP.VA45**

PR	21800.000
QV	31.850
Pc	-0.0045
Pu	-0.0027
DP	0.0017
R	-30000.000
T	26.188
F	0.011
Pv_J	21773.813
Pv_F	21826.188