

COMMITTENTE:



DIREZIONE LAVORI:



APPALTATORE:
CONSORZIO:



SOCI:



PROGETTAZIONE:
MANDATARIA:



MANDANTI:



PROGETTO ESECUTIVO

ITINERARIO NAPOLI - BARI RADDOPPIO TRATTA APICE - ORSARA I LOTTO FUNZIONALE APICE - HIRPINIA

Linea di contatto

Stazione di Hirpinia

Analisi striscio comunicazioni Stazione di Hirpinia

APPALTATORE	DIRETTORE DELLA PROGETTAZIONE	PROGETTISTA	REVISORE
Consorzio HIRPINIA AV Il Direttore Tecnico Ing. Vincenzo Moriello 10/06/2020	Il Responsabile integrazione fra le varie prestazioni specialistiche Ing. G. Cassani	 Ing. S. Susani	Ing. F. Rigoni

COMMESSA LOTTO FASE ENTE TIPO DOC. OPERA/DISCIPLINA PROGR. REV. SCALA:

IF28 01 E ZZ DX LC0300 004 A -

Rev.	Descrizione	Redatto	Data	Verificato	Data	Approvato	Data	Autorizzato Data
A	Recepimento istruttoria	C. Dalla Pria	10/06/2020	V. Corsini	10/06/2020	S. Eandi	10/06/2020	Ing. S. Eandi
								10/06/2020

File: IF2801EZZDXLC0300004A.dwg

n.Elabor.: _____

Catenaria: 540/270

19	
1+689,000	
LSU18b	
FLA	--
--	
2,40	
--	
5200	
1250	
773/669	-200 B.C.
773/745	+200 B.D.
--	--
--	--
--	--

Catenaria: 540

21	
1+647,150	
LSU16b	
FLA	--
--	
2,40	
--	
5200	
1250	
FCS1	0
--	--
--	--
--	--

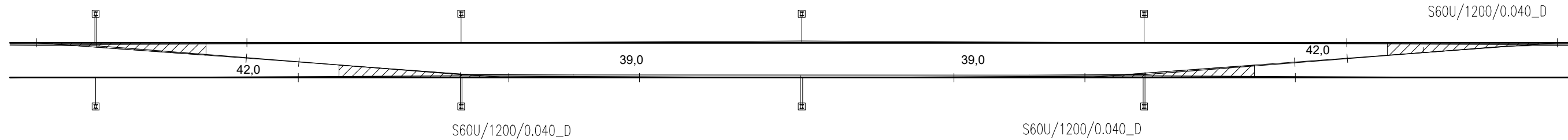
Catenaria: 540

23	
1+608,150	
LSU16b	
FLA	--
--	
2,40	
--	
5200	
1250	
773/788	+200
--	--
--	--
--	--

Catenaria: 540

25	
1+568,950	
LSU16b	
FLA	--
--	
2,40	
--	
5200	
1250	
FCS1	0
--	--
--	--
--	--

S60U/1200/0.040_D



Catenaria: 540

20	
1+689,000	
LSU16b	
FLA	--
--	
2,40	
--	
5200	
1250	
FCS1	0
--	--
--	--
--	--

Catenaria: 540/270

22	
1+647,150	
LSU18b	
FLA	--
--	
2,40	
--	
5200	
1250	
773/745	+200 B.D.
773/669	-200 B.C.
--	--
--	--
--	--

Catenaria: 540/270

24	
1+608,150	
LSU18b	
FLA	--
--	
2,40	
--	
5200	
1250	
773/322	-200 B.D.
FCS1	0 B.C.
--	--
--	--
--	--

Catenaria: 540/270

26	
1+568,950	
LSU18b	
FLA	--
--	
2,40	
--	
5200	
1250	
773/669	-200 B.C.
773/745	+200 B.D.
--	--
--	--
--	--

CARATTERISTICHE CATENARIA 540 mm² :

- N°2 FILI SAGOMATI SEZ. 150 mm CON TIRO NOMINALE PARI A 1875 daN PER SINGOLO FILO
- N°2 CORDE PORTANTI SEZ. 120 mm CON TIRO NOMINALE PARI A 1500 daN PER SINGOLA CORDA

CARATTERISTICHE CATENARIA 270 mm² :

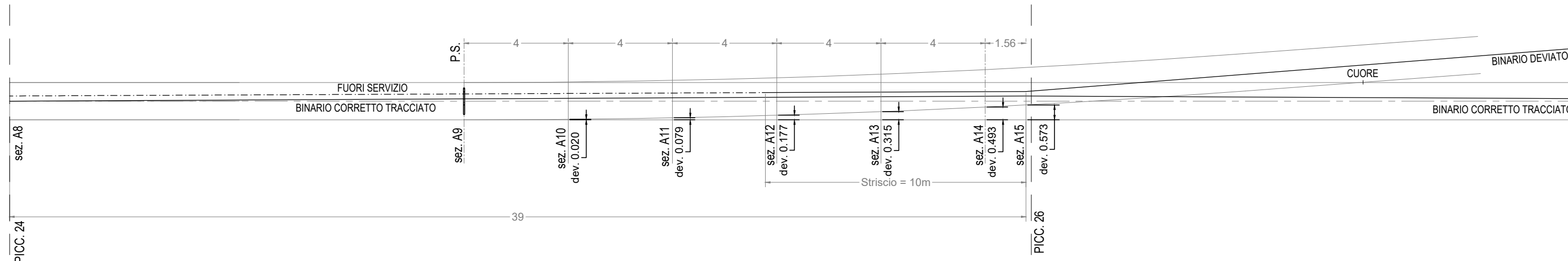
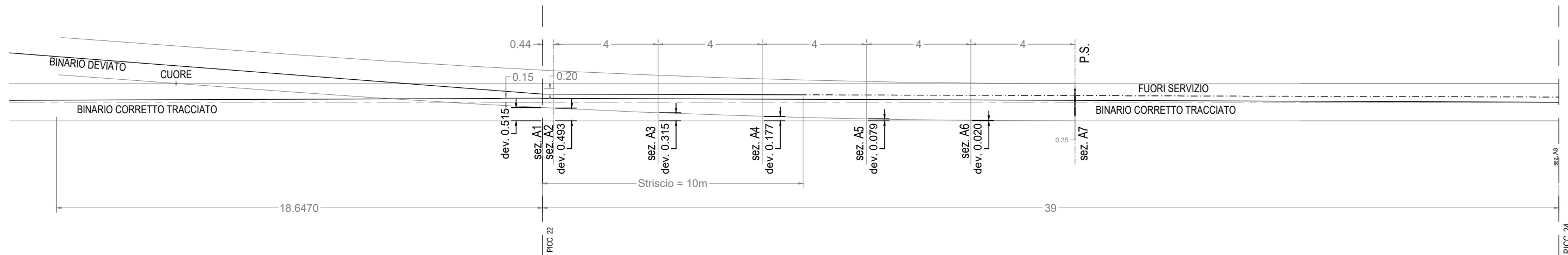
- N°2 FILI SAGOMATI SEZ. 150 mm CON TIRO NOMINALE PARI A 1125 daN PER SINGOLO FILO
- N°2 CORDE PORTANTI SEZ. 120 mm CON TIRO NOMINALE PARI A 1125 daN PER SINGOLA CORDA

Catenaria: 540/270

22	
1+647,150	
LSU18b	
FLA	-
2,40	
-	
-	
5200	
1250	
773/745	+200 B.D.
773/669	-200 B.C.
-	-
-	-
-	-

Catenaria: 540/270

24	
1+608,150	
LSU18b	
FLA	-
2,40	
-	
-	
5200	
1250	
773/322	-200 B.D.
FCS1	0 B.C.
-	-
-	-
-	-



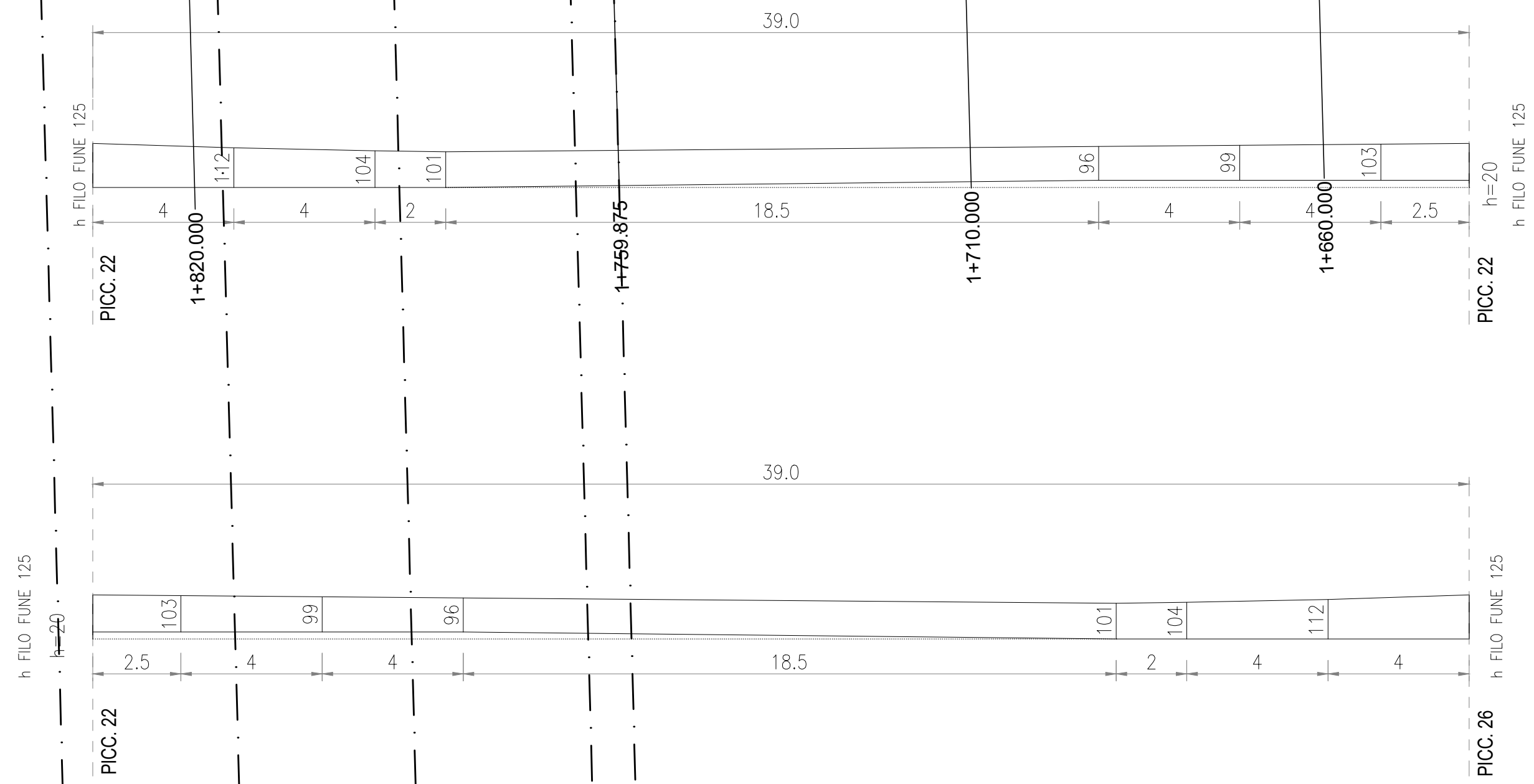
Catenaria: 540/270

24	
1+608,150	
LSU18b	
FLA	-
2,40	
-	
-	
5200	
1250	
773/322	-200 B.D.
FCS1	0 B.C.
-	-
-	-
-	-

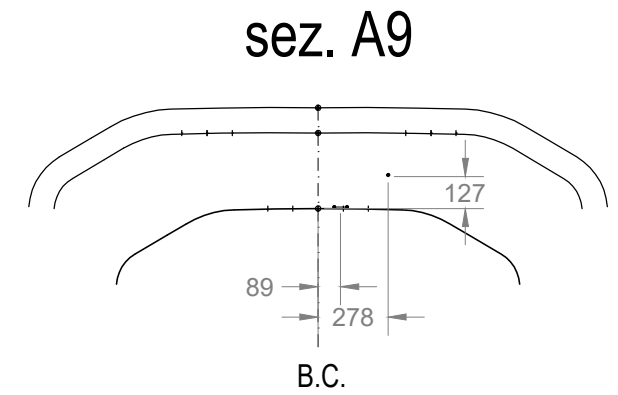
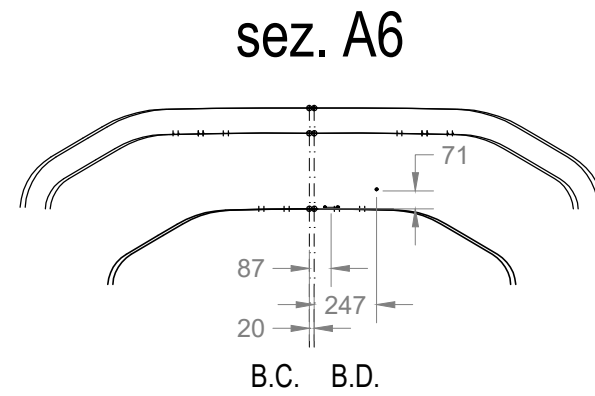
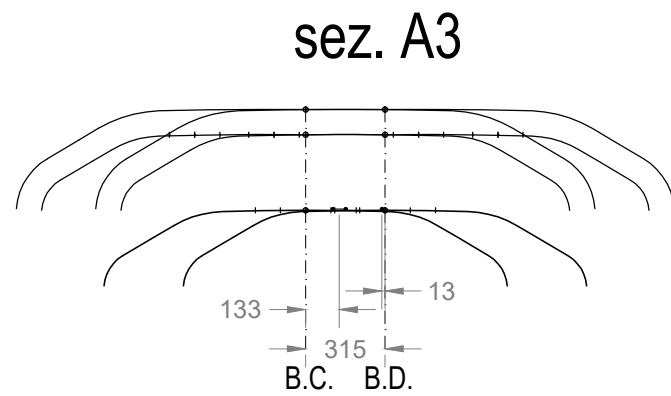
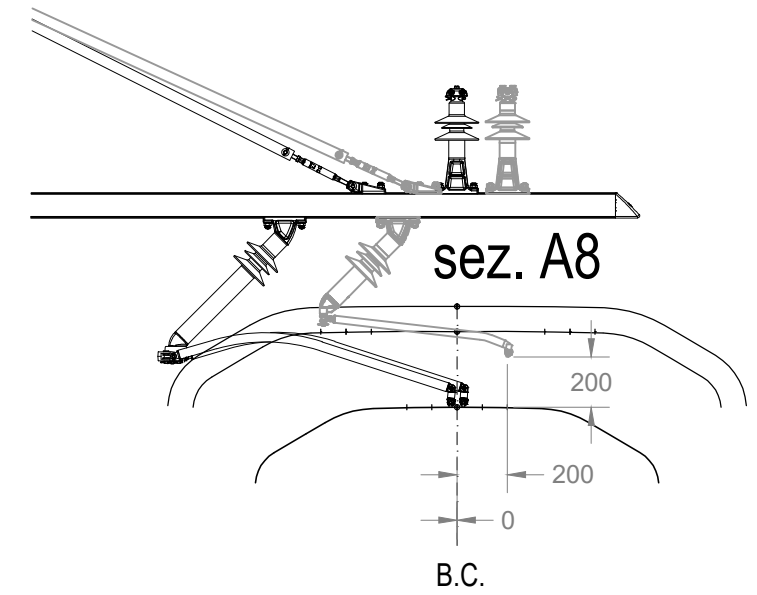
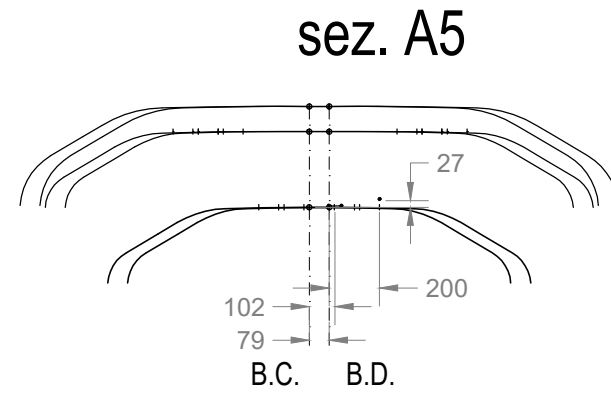
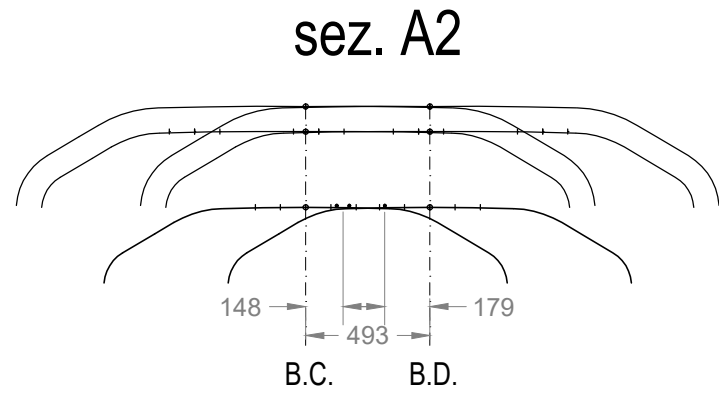
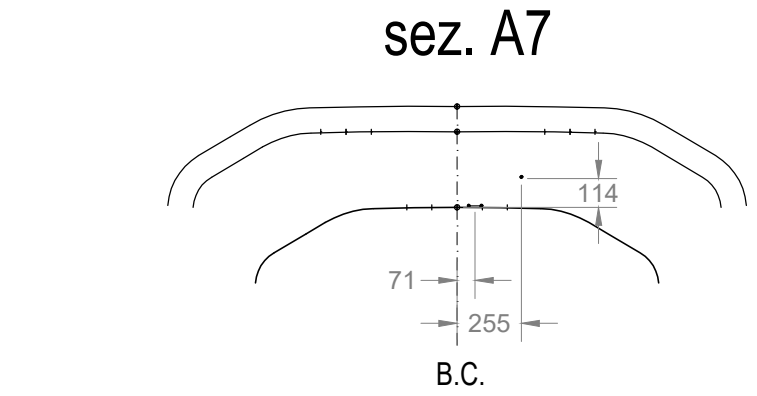
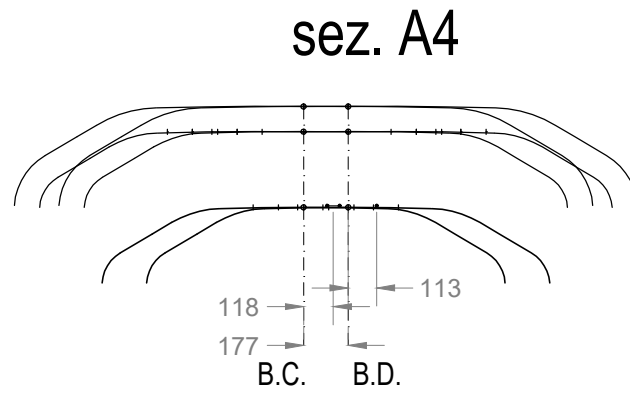
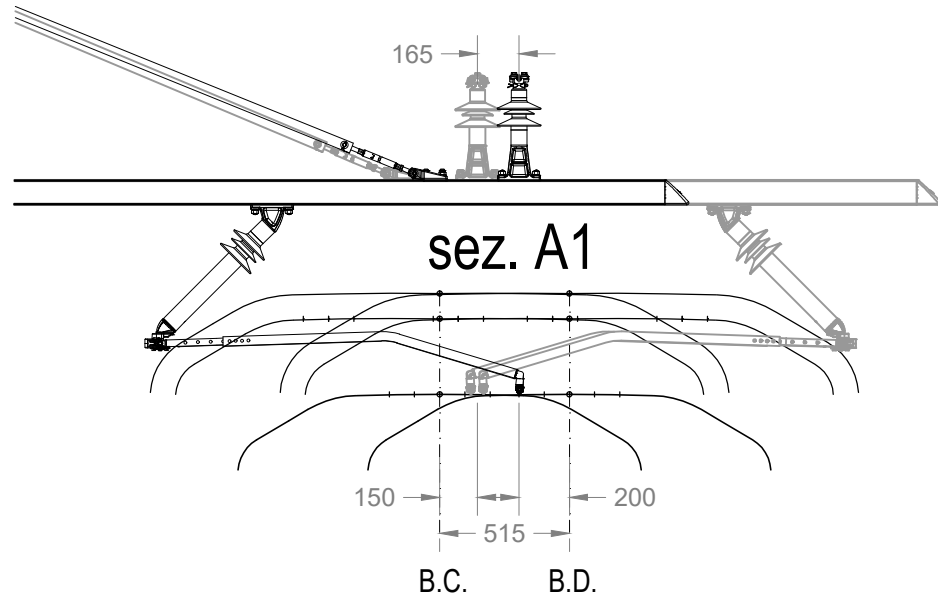
Catenaria: 540/270

26	
1+568,950	
LSU18b	
FLA	-
2,40	
-	
-	
5200	
1250	
773/669	-200 B.C.
773/745	+200 B.D.
-	-
-	-
-	-

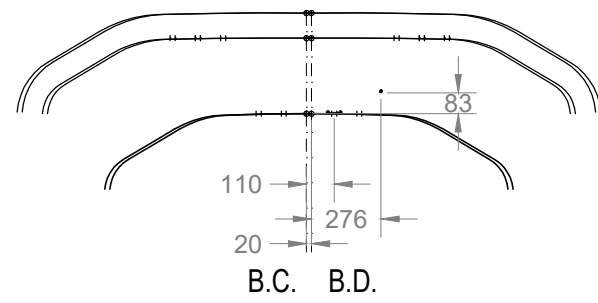
S 60 UNI/400/0.074 D



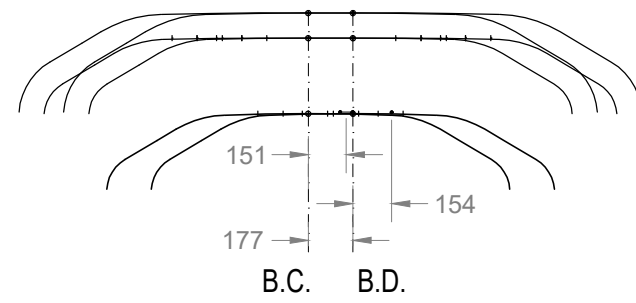
- CARATTERISTICHE CATENARIA 270 mm²:
- N°2 FILI SAGOMATI SEZ. 150 mm CON TIRO NOMINALE PARI A 1125 daN PER SINGOLO FILO
 - N°2 CORDE PORTANTI SEZ. 120 mm CON TIRO NOMINALE PARI A 1125 daN PER SINGOLA CORDA



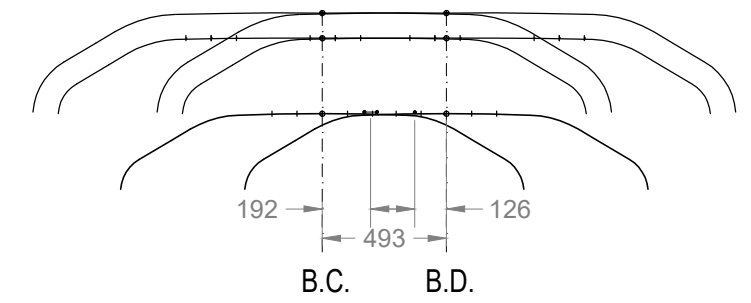
sez. A10



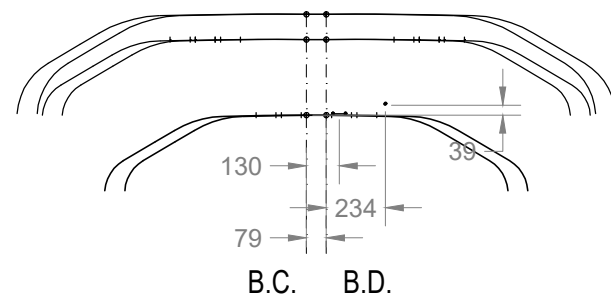
sez. A12



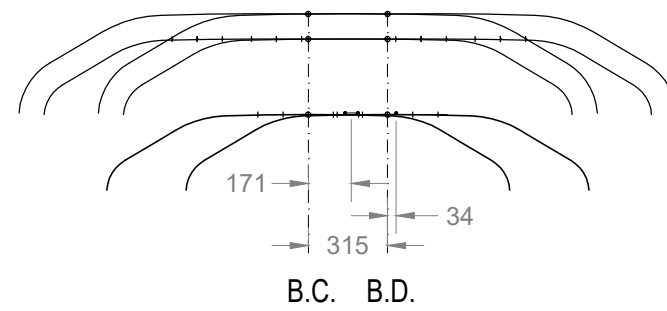
sez. A14



sez. A11



sez. A13



sez. A15

