

LEGENDA

- DIREZIONE DEFLUSSI IDRAULICI**
- IMPLUVIO
  - COLMO
  - VERTICE / QUOTE DI SCORRIMENTO
  - DIREZIONE DEFLUSSO
  - RECAPITI
- FOSSI E CANALETTE**
- WBS-FR.x-n-L - FOSSO RIVESTITO
  - WBS-Fix.n-L-B - FOSSO INERBITO/BACINO DI LAMINAZIONE
  - WBS-FD.x-n-L - FOSSO DISPERDENTE
  - CANALETTA AD EMBRICI
  - WBS-CG.x-n - CANALETTA GRIGLIATA
  - WBS-CFR-L/CH-L - CANALCAFFOSSOTOMBO IN CALCESTRUZZO
  - WBS-CR.x-n/CRB.x-n - CANALETTA RETTANGOLARE NON BEOLATA / BEOLATA
  - WBS-CC.x-n/CCB.x-n - CANALETTA A FONDO CIRCOLARE NON BEOLATA
- RIPRISTINO IDRAULICA INTERFERITA**
- WBS-FT.x-n-L - FOSSO IN TERRA
  - WBS-FC.x-n-L - FOSSO RIVESTITO IN CLS
  - WBS-FP.x-n-L - FOSSO RIVESTITO IN PIETREME
- COLLETTORI**
- PVC S8N
  - PEAD PN6
  - CAV
  - DN200
  - DN250
  - DN315
  - DN400
  - DN500
  - DN630
  - DN800
  - DN1000
- CADITOIE E MANUFATTI**
- WBS-Pn - POZZETTO IN CAV CON CADITOIA
  - WBS-Pn - POZZETTO IN CAV CON CHIUSINO
  - WBS-Pn - POZZETTO IN CAV NON ISPEZIONABILE
  - WBS-Pn - POZZETTO IN CAV CON VALVOLA AUTOMATICA A GHIOLITINA DI REGOLAZIONE DELLA PORTATA
  - POZZETTO PER INNESTO PLUVIALE
  - CADITOIA PER VIADOTTI
  - PLUVIALE DI SCARICO PER VIADOTTI
  - WBS-MC.x-n - MANUFATTO DI CONTROLLO
  - WBS-IE-n - IMPIANTO DI SOLLEVAMENTO / EMUNGIMENTO
  - WBS-PD.x-n - POZZO A DISPERSIONE
  - WBS-TD.x-n-L - TRINCEA DISPERDENTE

NOTE:  
 \* Riferimento alfanumerico tipologico  
 # Numero d'ordine  
 L Sviluppo longitudinale  
 B Larghezza al fondo del bacino di laminazione

ELABORATI DI RIFERIMENTO

DESCRIZIONE: Manufatti di drenaggio - Sezioni e Particolari  
 CODICE: I2801EZZB2NV000004B

COMMITTEE: **RFI** GRUPPO FERROVIE DELLO STATO ITALIANO

DIREZIONE LAVORI: **ITALFERR** GRUPPO FERROVIE DELLO STATO ITALIANO

APPALTATORE: **HirpiniaAV**

CONSORZIO: **salini impreglio** **ASTALDI**

PROGETTAZIONE: **ROCKSOIL** S.p.A.

MANDATARIO: **NETENGINEERING** **Alpina** S.p.A.

PROGETTO ESECUTIVO

ITINERARIO NAPOLI - BARI  
 RADDOPPIO TRATTA APICE - ORSARA  
 I LOTTO FUNZIONALE APICE - HIRPINIA  
 VIABILITA'

NV16 - VIABILITÀ DI ACCESSO ALLA FERMATA APICE  
 ASSI 1 e 2  
 Planimetria idraulica smaltimento acque di piattaforma - Tav 2/2

APPALTATORE Consorzio HIRPINIA AV Direttore Tecnico Ing. Vincenzo Morillo 10/06/2020	DIRETTORE DELLA PROGETTAZIONE Il Responsabile integrazione fra le varie prestazioni specialistiche Ing. G. Casanova	PROGETTISTA <b>NETENGINEERING</b> Ing. G. T. Thai Huynh
--	---	---

COMMESSA	LOTTO	FASE	ENTE	TIPO DOC.	OPERA/DISCIPLINA	PROGR.	REV.	SCALA:
I F 2 8	0 1	E	Z Z	P 8	N V 1 6 0 0	0 0 6	B	1:500

Rev.	Descrizione	Redatto	Data	Verificato	Data	Approvato	Data	Autorezzato Data
A	Emissione per consegna	G. Panerchia	21/02/2020	E. Casella	21/02/2020	T. Finocchietti	21/02/2020	Ing. T. Finocchietti
B	Regolazione sistema	F. Carraro	10/06/2020	E. Casella	10/06/2020	T. Finocchietti	10/06/2020	

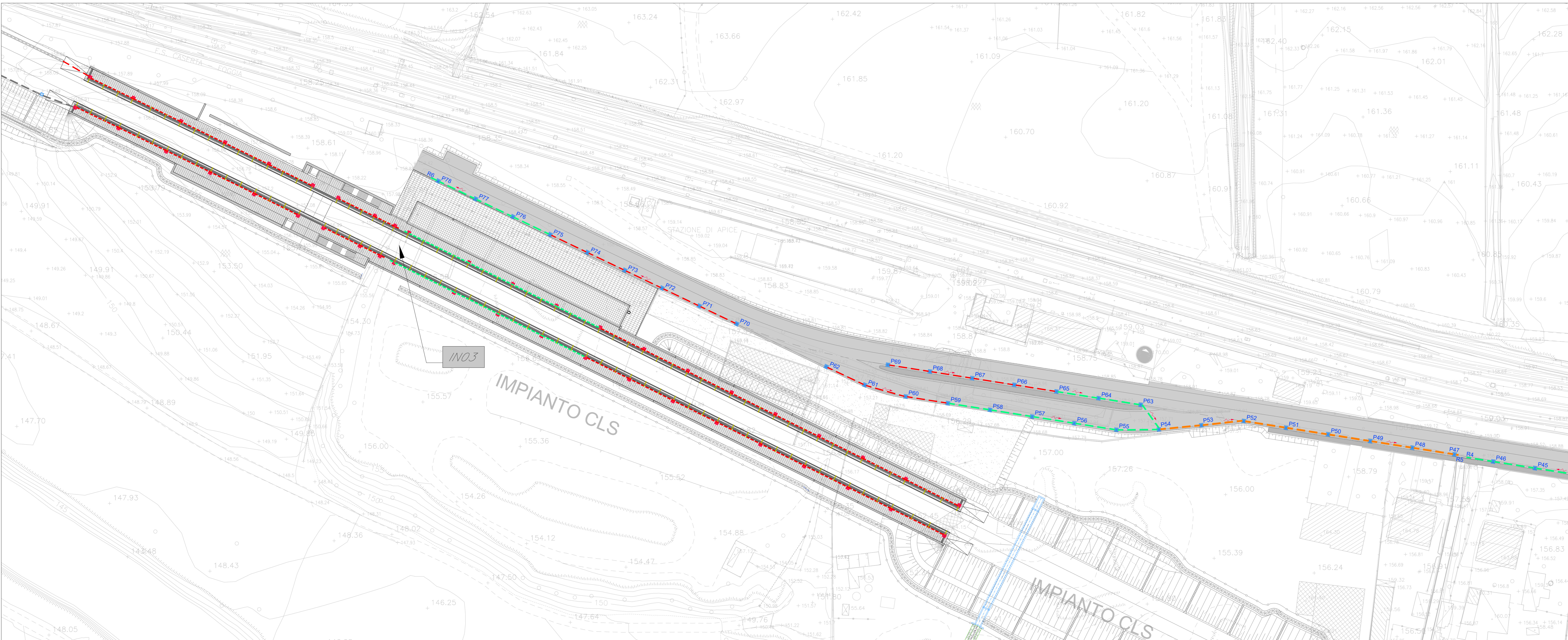


Tabella Pozzetti					Tabella Condotte							
ID	X (m E)	Y (m N)	H (m)	A (m)	B (m)	Inizio	Fine	DN (mm)	L (m)	I (-)	Zi (m slm)	Zf (m slm)
NV16-P47	7567.73	155210.57	2.25	1.00	1.00	NV16-P62	NV16-P61	315	12.00	0.3%	157.22	157.19
NV16-P48	7579.56	155204.94	2.25	1.00	1.00	NV16-P61	NV16-P60	315	12.00	0.3%	157.19	157.15
NV16-P49	7592.13	155201.50	2.25	1.00	1.00	NV16-P60	NV16-P59	315	12.00	0.3%	157.15	157.12
NV16-P50	7620.07	155198.34	2.25	1.00	1.00	NV16-P59	NV16-P58	400	12.00	0.3%	157.04	157.00
NV16-P51	7618.01	155197.29	2.25	1.00	1.00	NV16-P58	NV16-P57	400	12.00	0.3%	157.00	156.96
NV16-P52	7630.94	155195.24	2.25	1.00	1.00	NV16-P57	NV16-P56	400	12.00	0.3%	156.96	156.93
NV16-P53	7643.88	155193.2	2.00	1.00	1.00	NV16-P56	NV16-P55	400	12.00	0.3%	156.93	156.89
NV16-P54	7656.83	155191.18	1.75	1.00	1.00	NV16-P55	NV16-P54	400	12.00	0.3%	156.89	156.86
NV16-P55	7669.89	155189.13	1.75	0.80	0.80	NV16-P54	NV16-P53	500	12.00	0.3%	156.76	156.73
NV16-P56	7682.93	155187.07	1.75	0.80	0.80	NV16-P53	NV16-P52	500	12.00	0.3%	156.73	156.69
NV16-P57	7695.97	155185.01	1.50	0.80	0.80	NV16-P52	NV16-P51	500	12.00	0.3%	156.69	156.65
NV16-P58	7708.91	155182.95	1.50	0.80	0.80	NV16-P51	NV16-P50	500	12.00	0.3%	156.65	156.62
NV16-P59	7721.85	155180.89	1.75	0.80	0.80	NV16-P50	NV16-P49	500	12.00	0.3%	156.62	156.58
NV16-P60	7734.79	155178.83	1.50	0.80	0.80	NV16-P49	NV16-P48	500	12.00	0.3%	156.58	156.55
NV16-P61	7747.73	155176.77	1.50	0.80	0.80	NV16-P48	NV16-P47	500	12.00	0.3%	156.55	156.51
NV16-P62	7760.67	155183.62	1.75	0.80	0.80	NV16-P47	NV16-P46	500	1.00	1.0%	156.51	156.50
NV16-P63	7664.3	155198.80	1.50	0.80	0.80	NV16-P46	NV16-P45	315	12.00	0.3%	157.22	157.18
NV16-P64	7651.35	155200.87	1.50	0.80	0.80	NV16-P45	NV16-P44	315	12.00	0.3%	157.18	157.14
NV16-P65	7638.41	155202.92	1.75	0.80	0.80	NV16-P44	NV16-P43	315	12.00	0.3%	157.14	157.11
NV16-P66	7625.47	155204.97	1.75	0.80	0.80	NV16-P43	NV16-P42	315	12.00	0.3%	157.11	157.07
NV16-P67	7612.54	155207.02	1.75	0.80	0.80	NV16-P42	NV16-P41	400	12.00	0.3%	156.99	156.96
NV16-P68	7599.6	155209.07	1.75	0.80	0.80	NV16-P41	NV16-P40	400	12.00	0.3%	156.96	156.92
NV16-P69	7586.66	155211.12	1.75	0.80	0.80	NV16-P40	NV16-P39	400	9.00	0.3%	156.92	156.89
NV16-P70	7573.73	155223.17	1.00	0.80	0.80	NV16-P39	NV16-P38	315	12.00	0.3%	156.89	156.86
NV16-P71	7560.79	155225.22	1.00	0.80	0.80	NV16-P38	NV16-P37	315	12.00	0.3%	156.86	156.83
NV16-P72	7547.85	155227.27	1.25	0.80	0.80	NV16-P37	NV16-P36	315	12.00	0.3%	156.83	156.80
NV16-P73	7534.91	155229.32	1.25	0.80	0.80	NV16-P36	NV16-P35	315	12.00	0.3%	156.80	156.77
NV16-P74	7521.97	155231.37	1.25	0.80	0.80	NV16-P35	NV16-P34	315	12.00	0.3%	156.77	156.74
NV16-P75	7509.03	155233.42	1.25	0.80	0.80	NV16-P34	NV16-P33	315	12.00	0.3%	156.74	156.71
NV16-P76	7496.09	155235.47	1.25	0.80	0.80	NV16-P33	NV16-P32	315	12.00	0.3%	156.71	156.68
NV16-P77	7483.15	155237.52	1.25	0.80	0.80	NV16-P32	NV16-P31	315	12.00	0.3%	156.68	156.65
NV16-P78	7470.21	155239.57	1.25	0.80	0.80	NV16-P31	NV16-P30	315	12.00	0.3%	156.65	156.62
NV16-P79	7457.27	155241.62	1.25	0.80	0.80	NV16-P30	NV16-P29	315	12.00	0.3%	156.62	156.59
NV16-P80	7444.33	155243.67	1.25	0.80	0.80	NV16-P29	NV16-P28	315	12.00	0.3%	156.59	156.56
NV16-P81	7431.39	155245.72	1.25	0.80	0.80	NV16-P28	NV16-P27	315	12.00	0.3%	156.56	156.53
NV16-P82	7418.45	155247.77	1.25	0.80	0.80	NV16-P27	NV16-P26	315	12.00	0.3%	156.53	156.50
NV16-P83	7405.51	155249.82	1.25	0.80	0.80	NV16-P26	NV16-P25	315	12.00	0.3%	156.50	156.47
NV16-P84	7392.57	155251.87	1.25	0.80	0.80	NV16-P25	NV16-P24	315	12.00	0.3%	156.47	156.44
NV16-P85	7379.63	155253.92	1.25	0.80	0.80	NV16-P24	NV16-P23	315	12.00	0.3%	156.44	156.41
NV16-P86	7366.69	155255.97	1.25	0.80	0.80	NV16-P23	NV16-P22	315	12.00	0.3%	156.41	156.38
NV16-P87	7353.75	155258.02	1.25	0.80	0.80	NV16-P22	NV16-P21	315	12.00	0.3%	156.38	156.35
NV16-P88	7340.81	155260.07	1.25	0.80	0.80	NV16-P21	NV16-P20	315	12.00	0.3%	156.35	156.32
NV16-P89	7327.87	155262.12	1.25	0.80	0.80	NV16-P20	NV16-P19	315	12.00	0.3%	156.32	156.29
NV16-P90	7314.93	155264.17	1.25	0.80	0.80	NV16-P19	NV16-P18	315	12.00	0.3%	156.29	156.26
NV16-P91	7301.99	155266.22	1.25	0.80	0.80	NV16-P18	NV16-P17	315	12.00	0.3%	156.26	156.23
NV16-P92	7289.05	155268.27	1.25	0.80	0.80	NV16-P17	NV16-P16	315	12.00	0.3%	156.23	156.20
NV16-P93	7276.11	155270.32	1.25	0.80	0.80	NV16-P16	NV16-P15	315	12.00	0.3%	156.20	156.17
NV16-P94	7263.17	155272.37	1.25	0.80	0.80	NV16-P15	NV16-P14	315	12.00	0.3%	156.17	156.14
NV16-P95	7250.23	155274.42	1.25	0.80	0.80	NV16-P14	NV16-P13	315	12.00	0.3%	156.14	156.11
NV16-P96	7237.29	155276.47	1.25	0.80	0.80	NV16-P13	NV16-P12	315	12.00	0.3%	156.11	156.08
NV16-P97	7224.35	155278.52	1.25	0.80	0.80	NV16-P12	NV16-P11	315	12.00	0.3%	156.08	156.05
NV16-P98	7211.41	155280.57	1.25	0.80	0.80	NV16-P11	NV16-P10	315	12.00	0.3%	156.05	156.02
NV16-P99	7198.47	155282.62	1.25	0.80	0.80	NV16-P10	NV16-P09	315	12.00	0.3%	156.02	155.99
NV16-P100	7185.53	155284.67	1.25	0.80	0.80	NV16-P09	NV16-P08	315	12.00	0.3%	155.99	155.96

DIMENSIONI TIPOLOGICHE FOSSICANALETTE		
CANALETTE C/S/C/S/CR/S	FOSSI FR/S/FR/S/FR/S	IMPIANTO TIPO FR/S/FR/S/FR/S
x B (mm) H (mm)	x B (mm) H (mm)	x B (mm) H (mm)
1 50 50	1 50 50	1 100 300
2 40 40	2 50 100	2 70 310
3 50 100	3 100 300	-