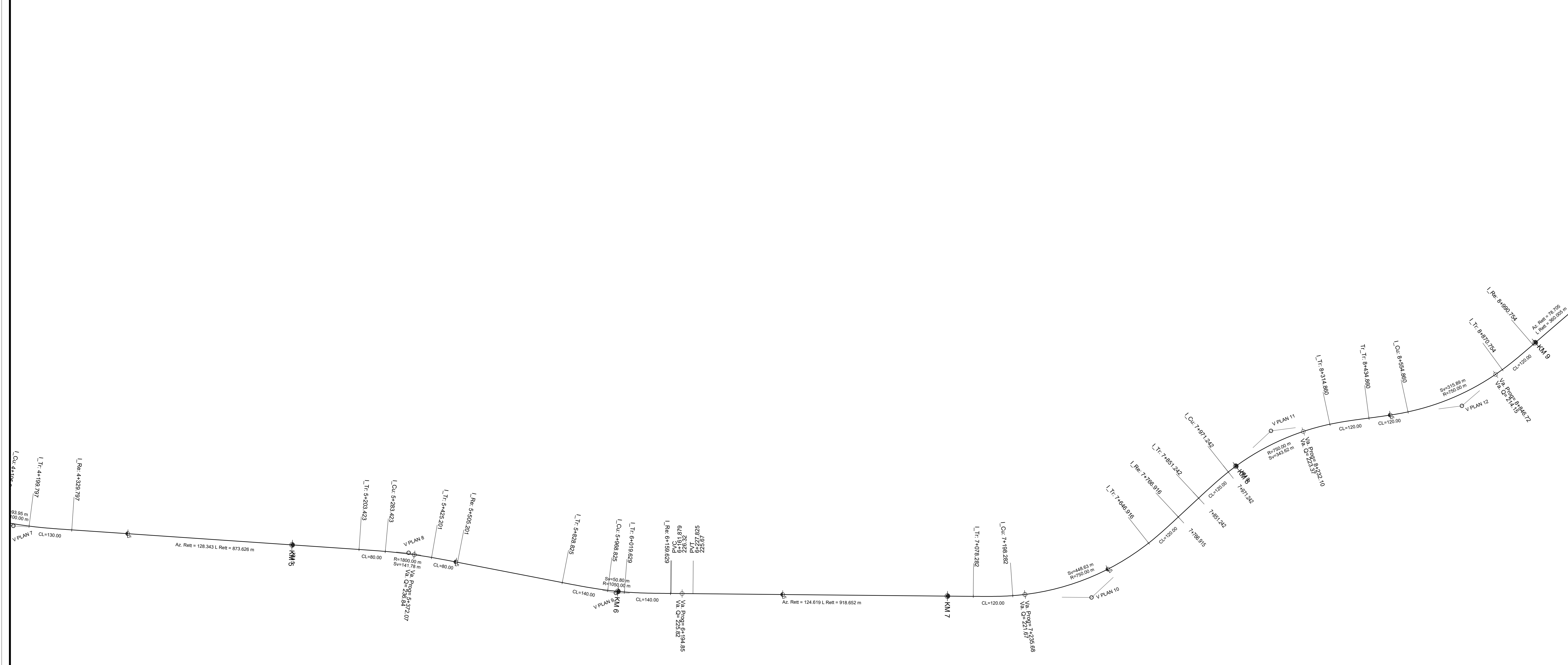
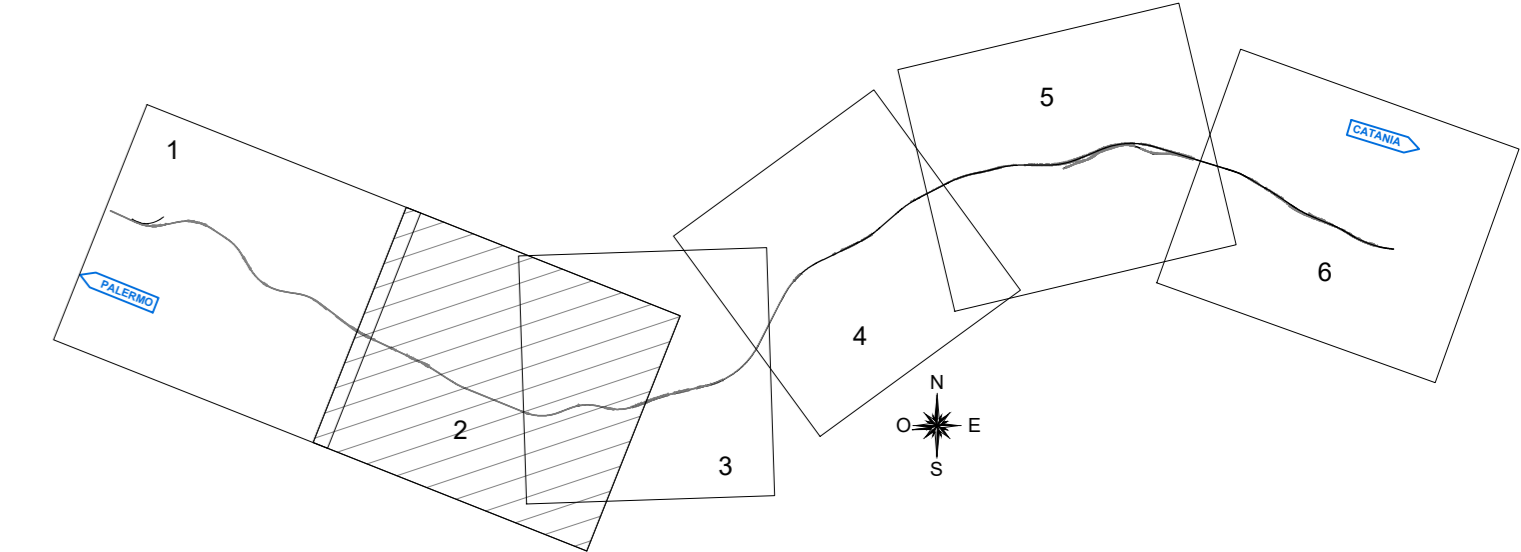


PALERMO

CATANIA



KEY PLAN



VERTICI PLANIMETRICI ASSE BINARIO

Table with 12 columns, each representing a different track section (V PLAN 1 to V PLAN 12). Each column contains technical data for that section, including coordinates (X, Y), radii (R), and other parameters.

VERTICI ALTIMETRICI ASSE BINARIO

Table with 15 columns, each representing a different track section (V ALT 7 to V ALT 15). Each column contains vertical alignment data such as elevation (PR), curve data (CV), and other parameters.

Administrative and project information block containing logos for RFI and ITALFER, project title 'NUOVO COLLEGAMENTO PALERMO - CATANIA', and a revision table.

Revision table with columns: Rev., Descrizione, Redatto, Data, Verificato, Data, Approvato, Data, Autorizzato, Data. It shows a single revision entry.