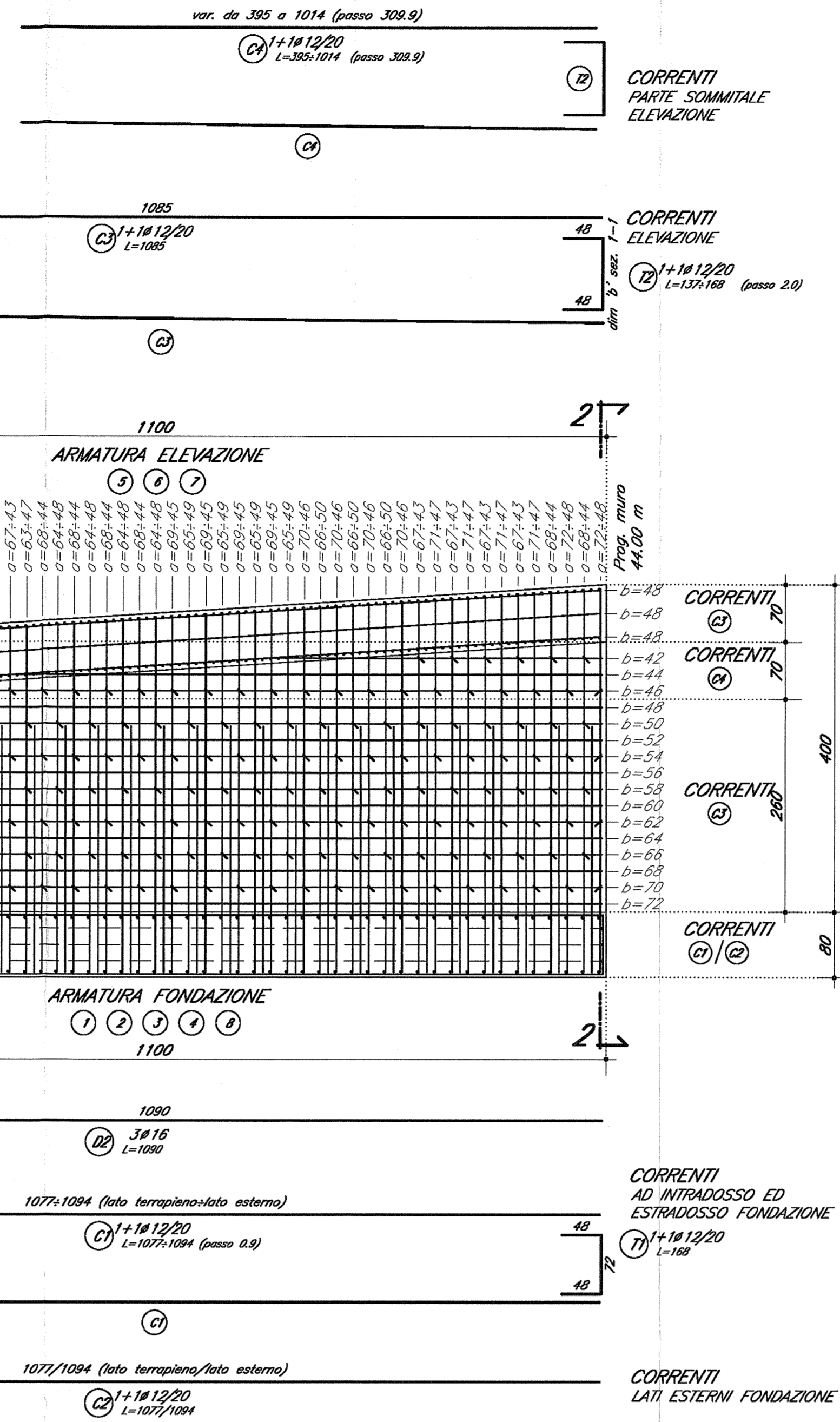
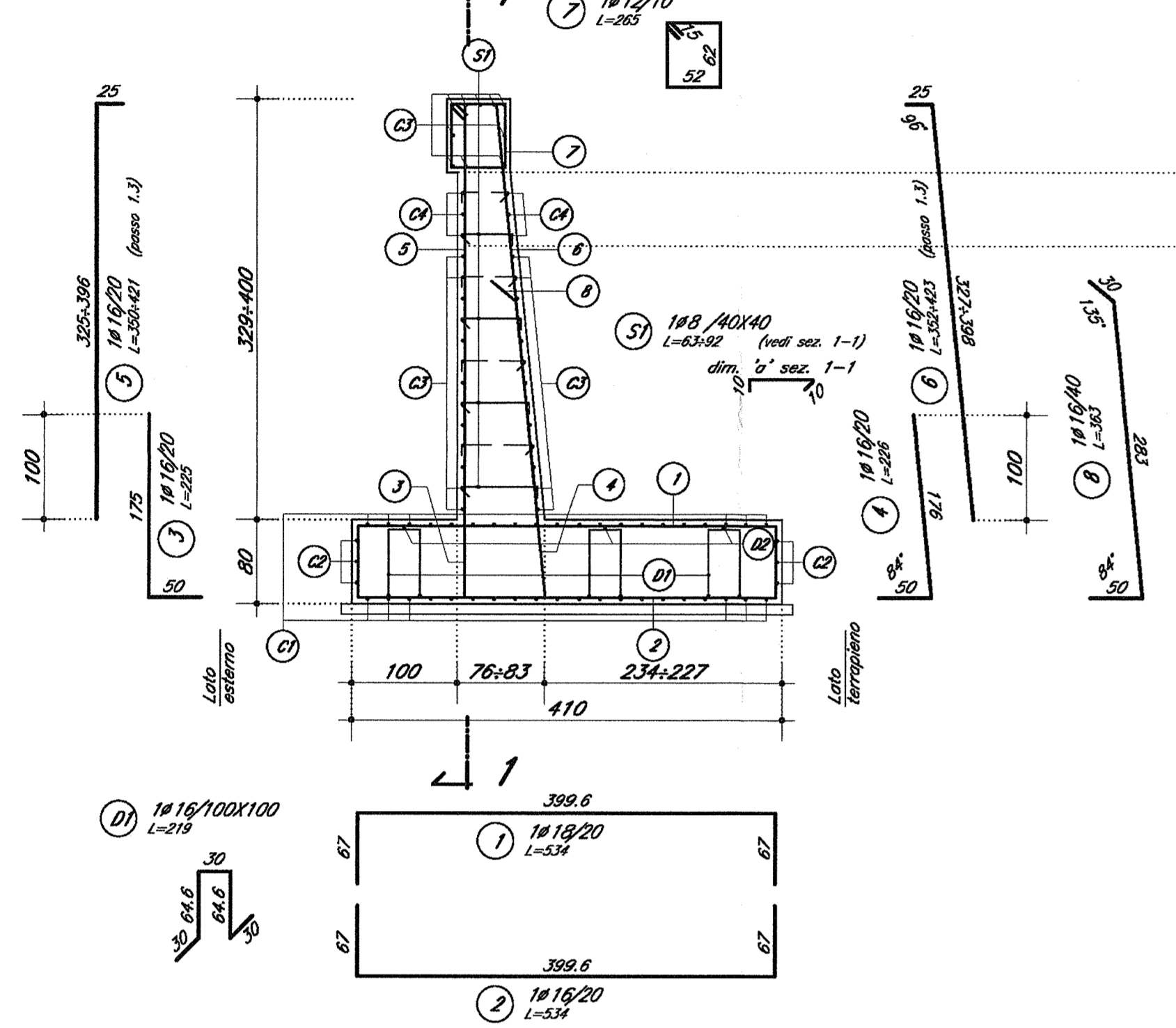


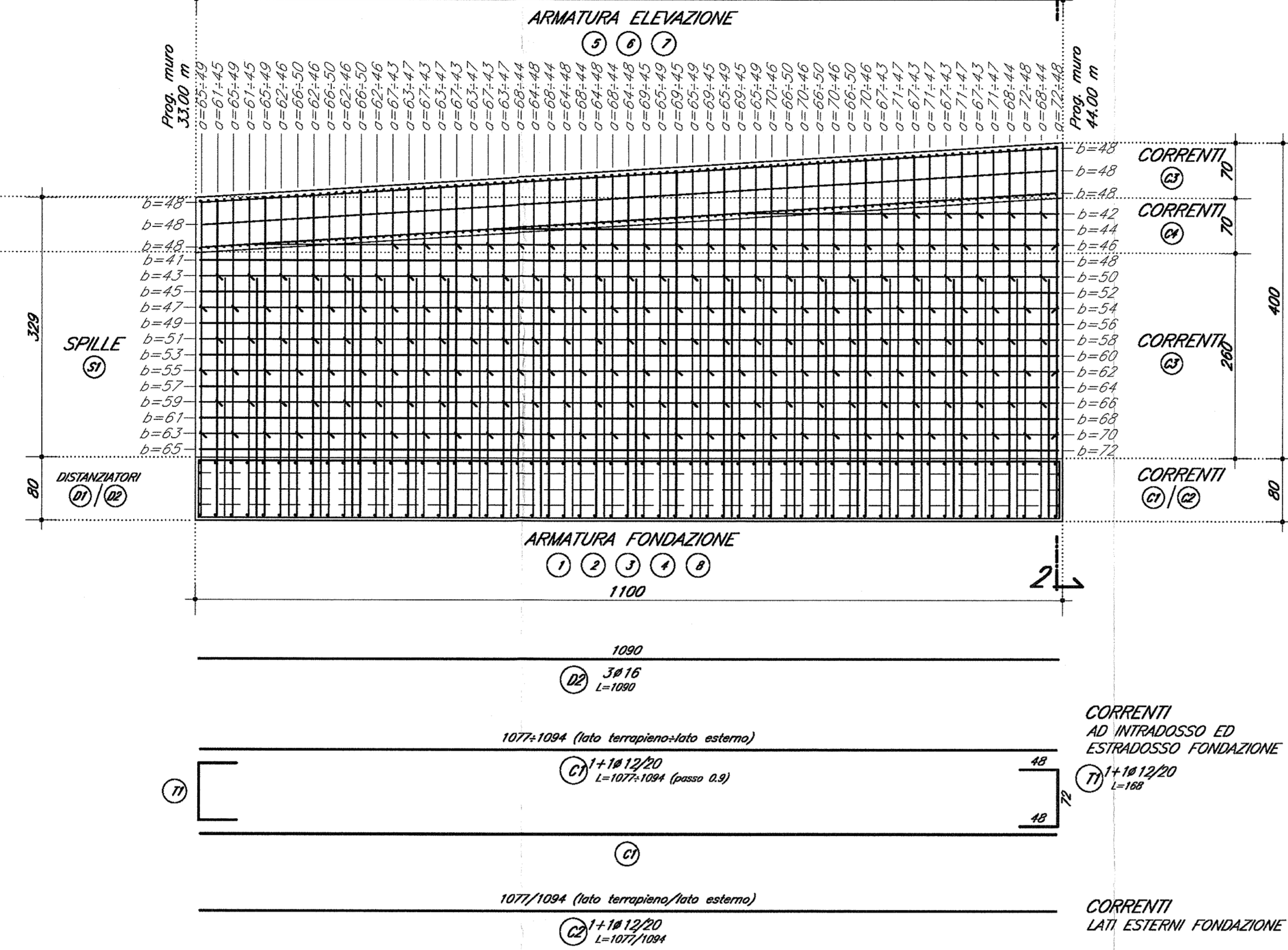
ARMATURA CONCIO 4



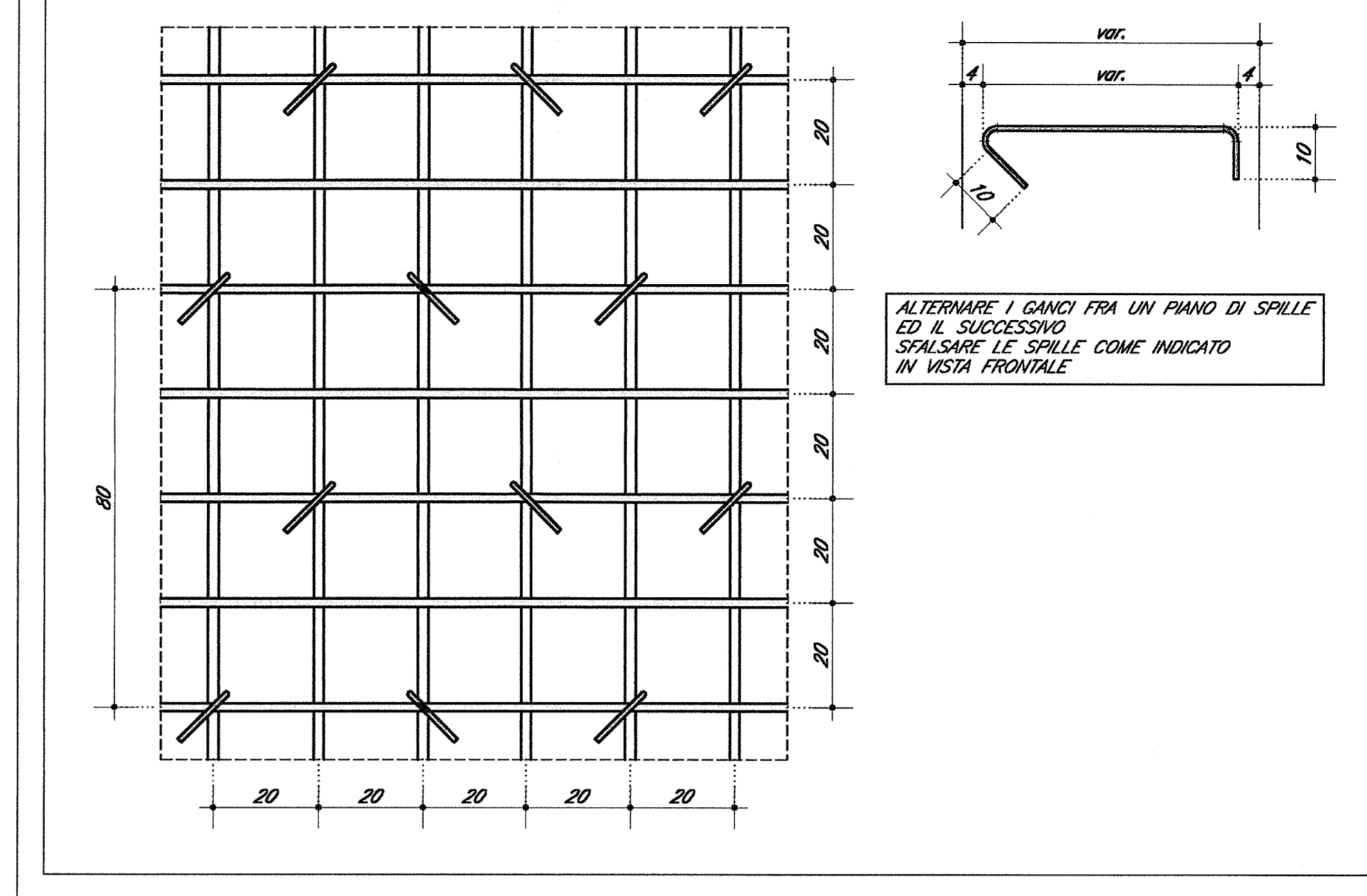
SEZIONE 2-2
SCALA 1:50
CONCIO 1134-4



SEZIONE 1-1
SCALA 1:50
CONCIO 1134-4



DETTAGLIO DISPOSIZIONE GANCI 1:10



DOCUMENTI DI RIFERIMENTO

Table of references including descriptions of technical specifications and codes for materials and standards.

NOTE GENERALI

- General notes regarding measurement units, material specifications, and construction details.

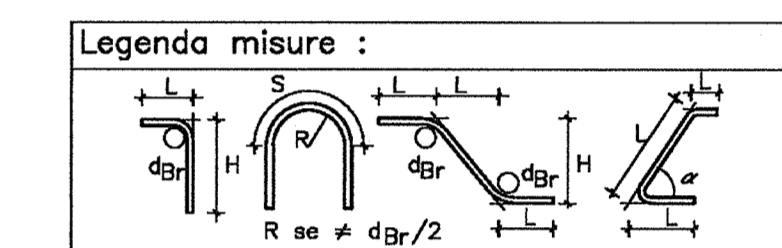


Table defining diameter symbols for reinforcement bars (e.g., d, d_p).

CARATTERISTICHE DEI MATERIALI

References to material specifications and general notes for materials used in the project.

Logos for RFI (Rete Ferroviaria Italiana) and Gruppo Ferrovie dello Stato.

Logo for Italfer, Gruppo Ferrovie dello Stato.

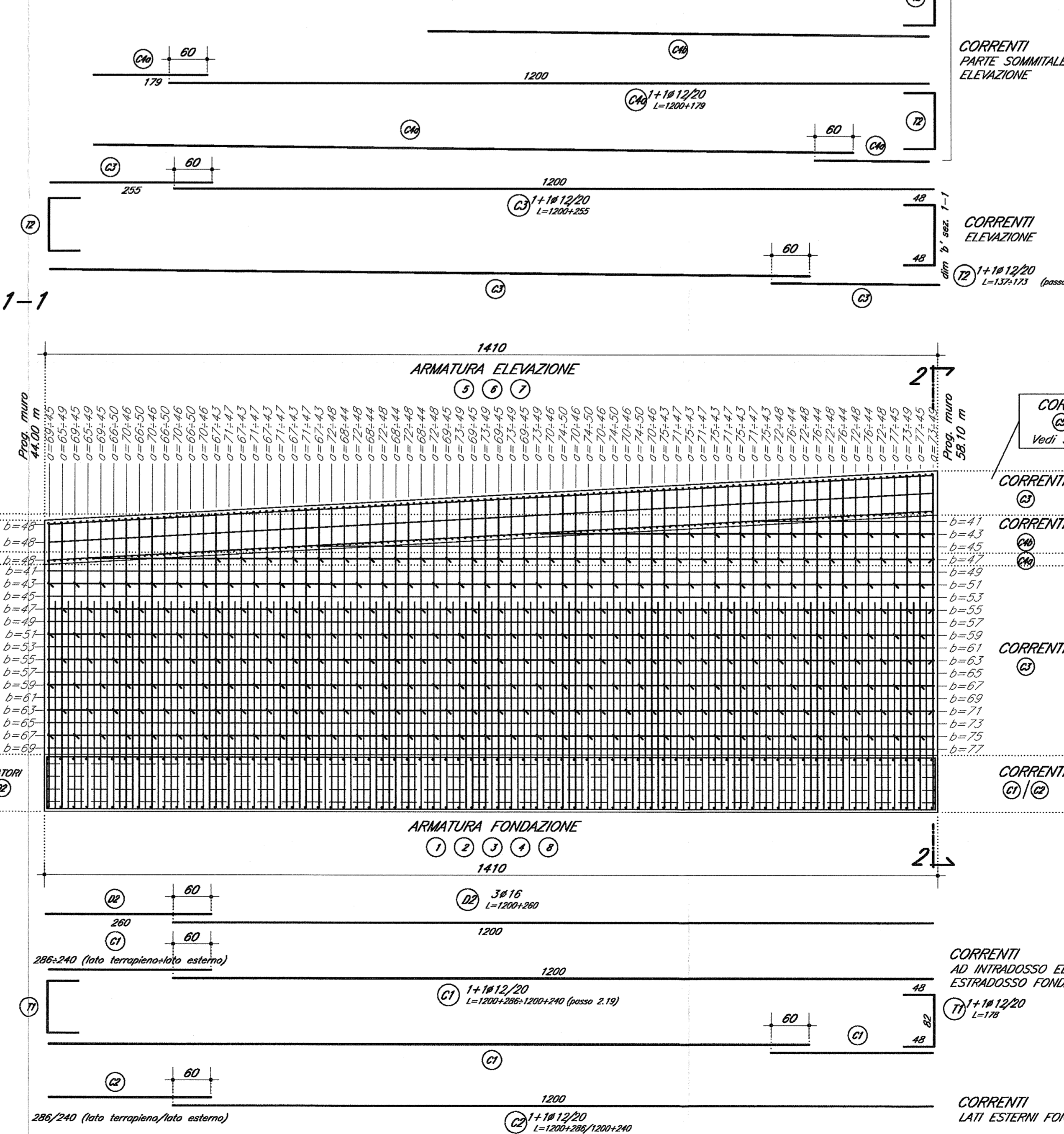
Logo for Cefav due, Consorzio ENI per l'Alta Velocità.

Project description: Infrastrutture Ferroviarie Strategiche definite dalla Legge Obiettivo N. 443/01. Linea A.V./A.C. TORINO - VENEZIA Tratta MILANO - VERONA. Lotto funzionale Brescia-Verona. Progetto ESECUTIVO IV34 - CAVALCAFERROVIA VIA GREZZE - PK 121+563,218. Muro di sostegno IN50Q02. Armatura. Tavola 2/4.

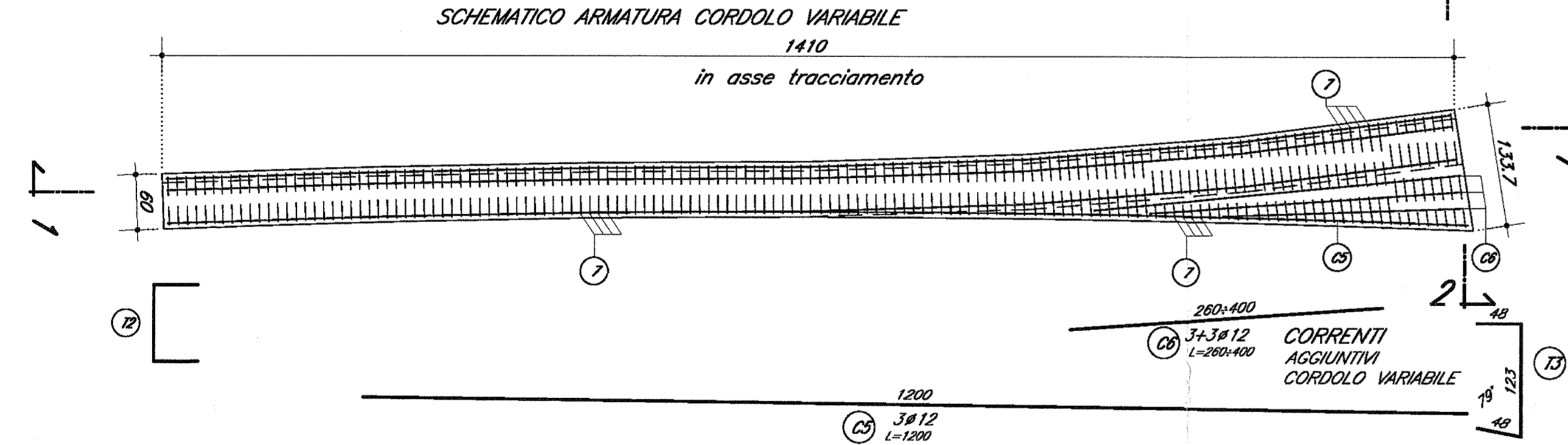
Table with project metadata including date (05 FEB 2019), scale (Varie), and drawing number (INOR 11 E E2 BZ IV34C0 003 A).

Approval stamps and signatures of the project engineer and other stakeholders.

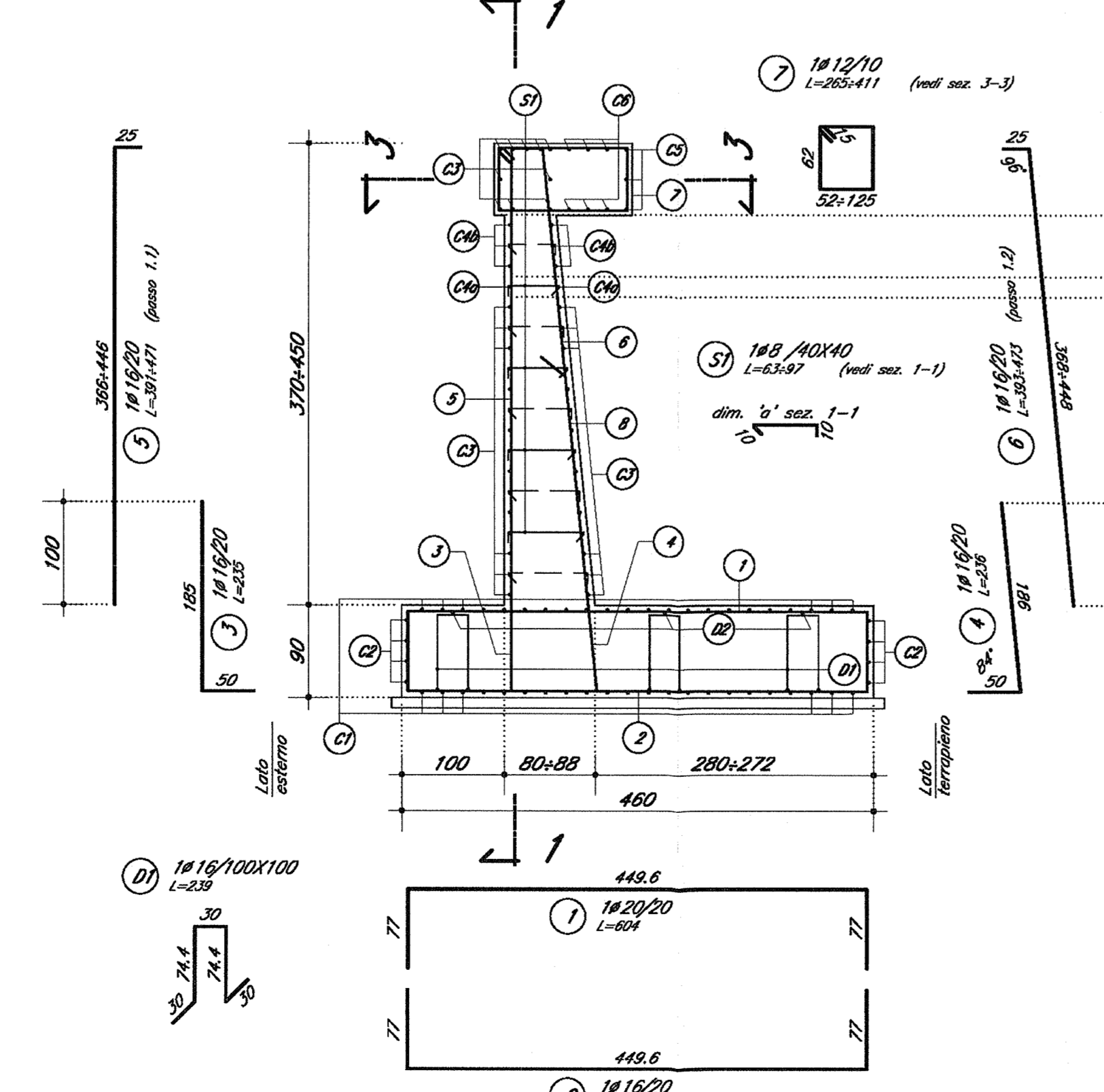
ARMATURA CONCIO 5



SEZIONE 3-3
SCALA 1:50
CONCIO 1134-5
SCHEMATICO ARMATURA CORDOLO VARIABILE
in asse tracciamento



SEZIONE 2-2
SCALA 1:50
CONCIO 1134-5



SEZIONE 1-1
SCALA 1:50
CONCIO 1134-5

