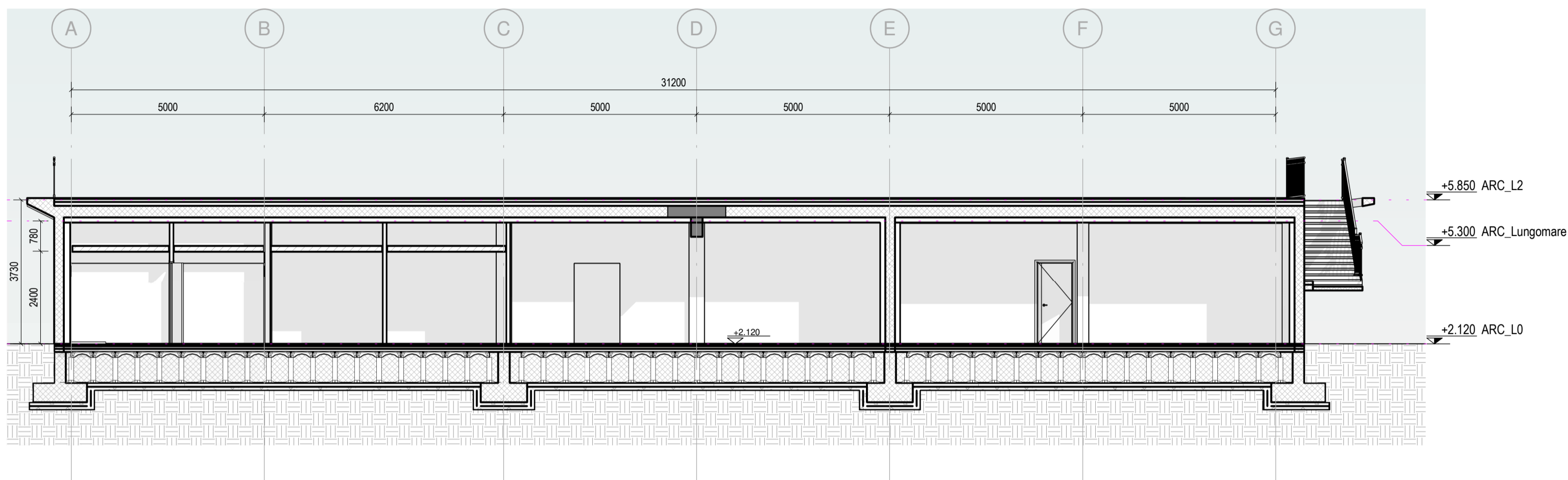


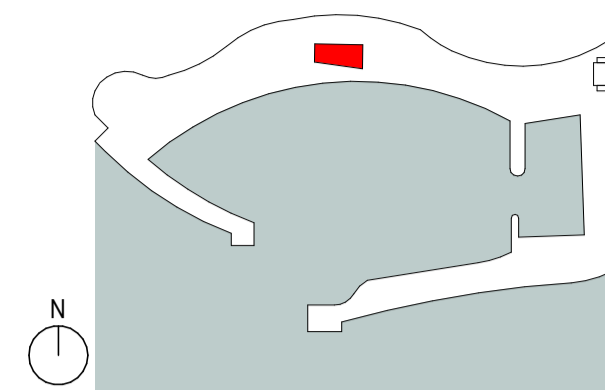
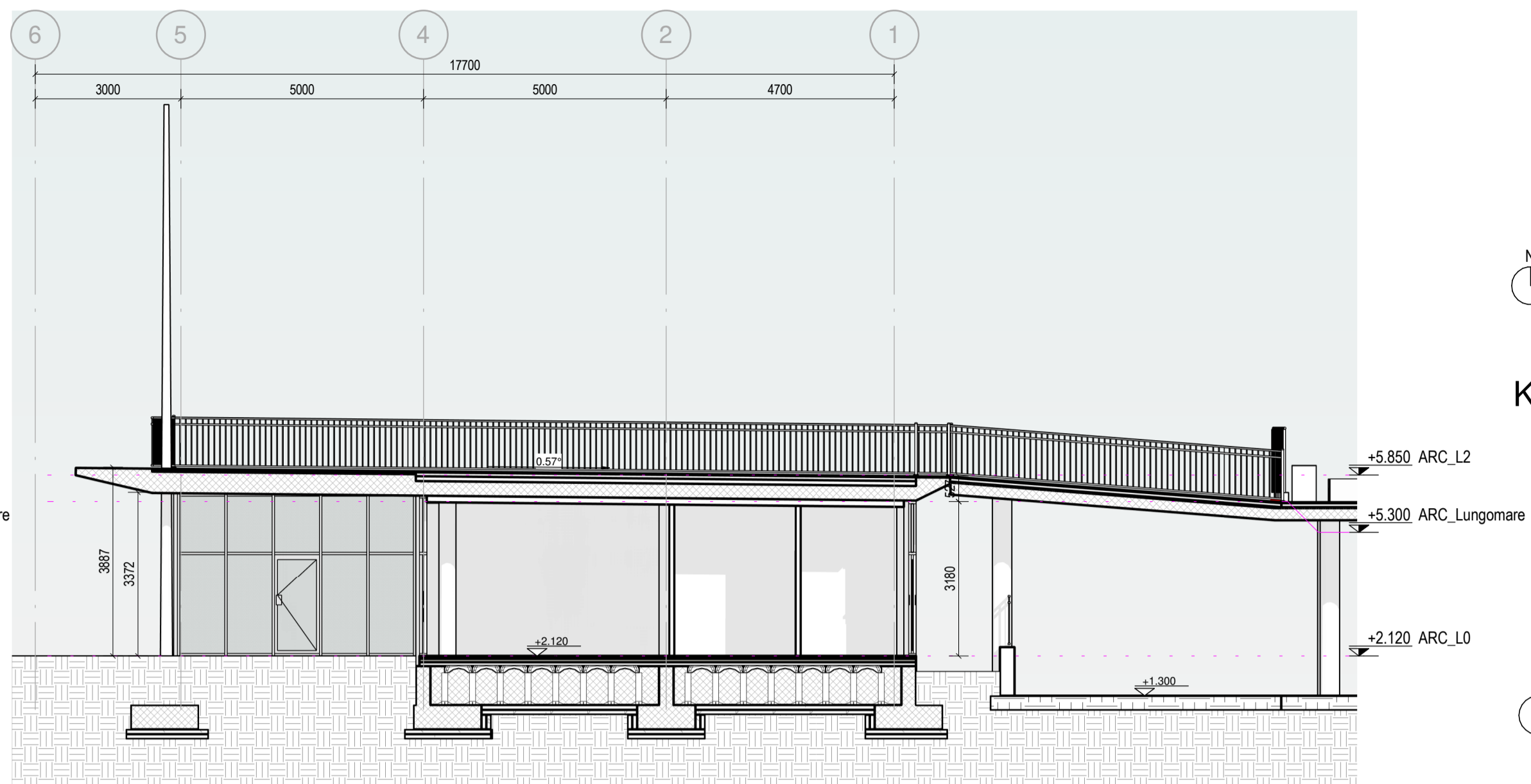
Sezione AA

Scale 1 : 100

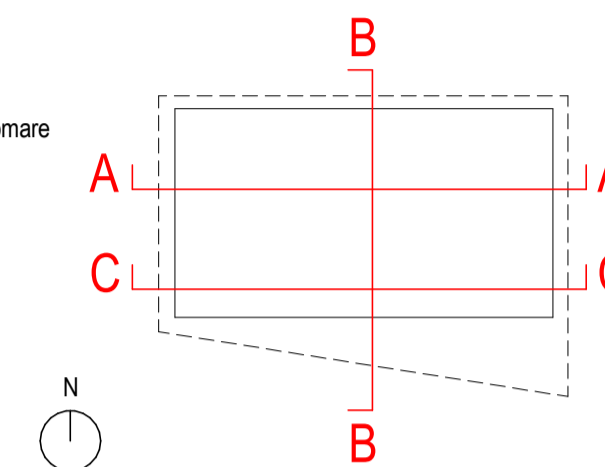


Sezione BB

Scale 1 : 100

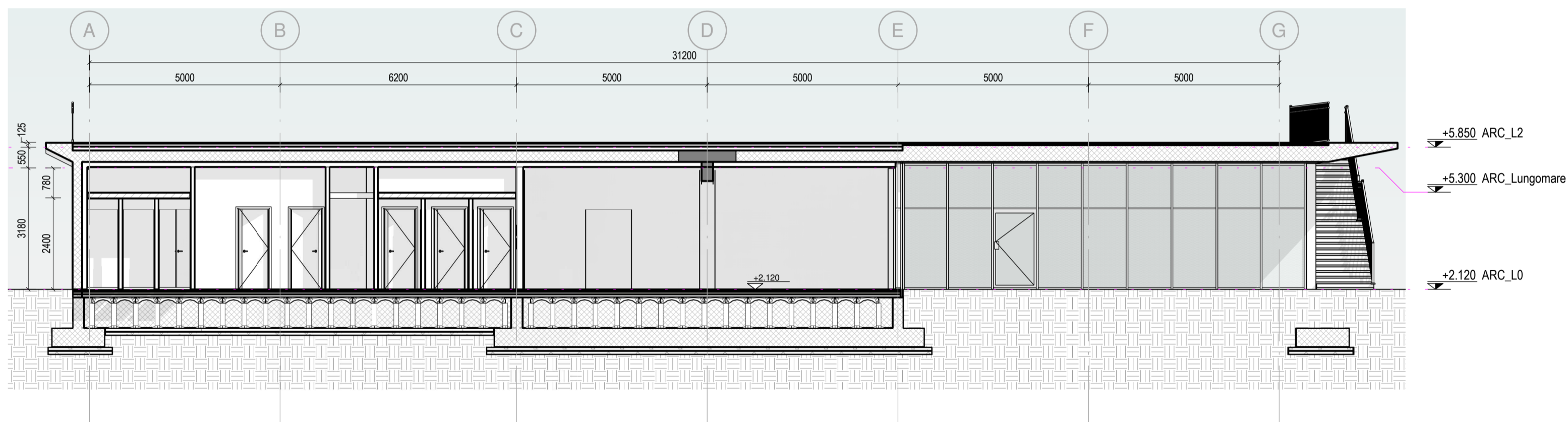


KEYPLAN



Sezione CC

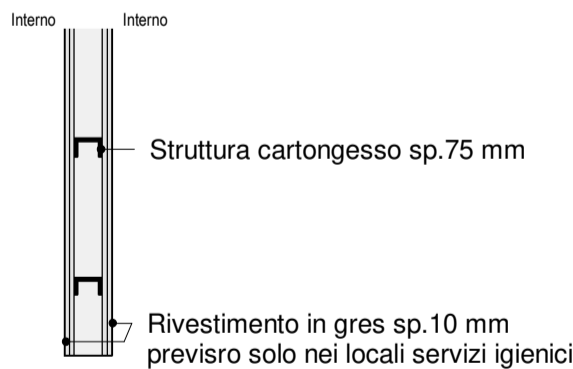
Scale 1 : 100



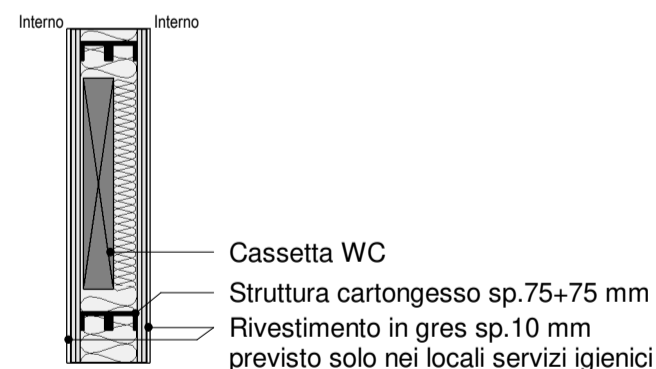
Abaco partizioni verticali

Scale 1 : 20

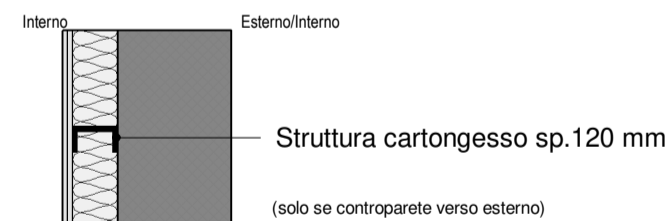
PARETE DIVISORIA 125



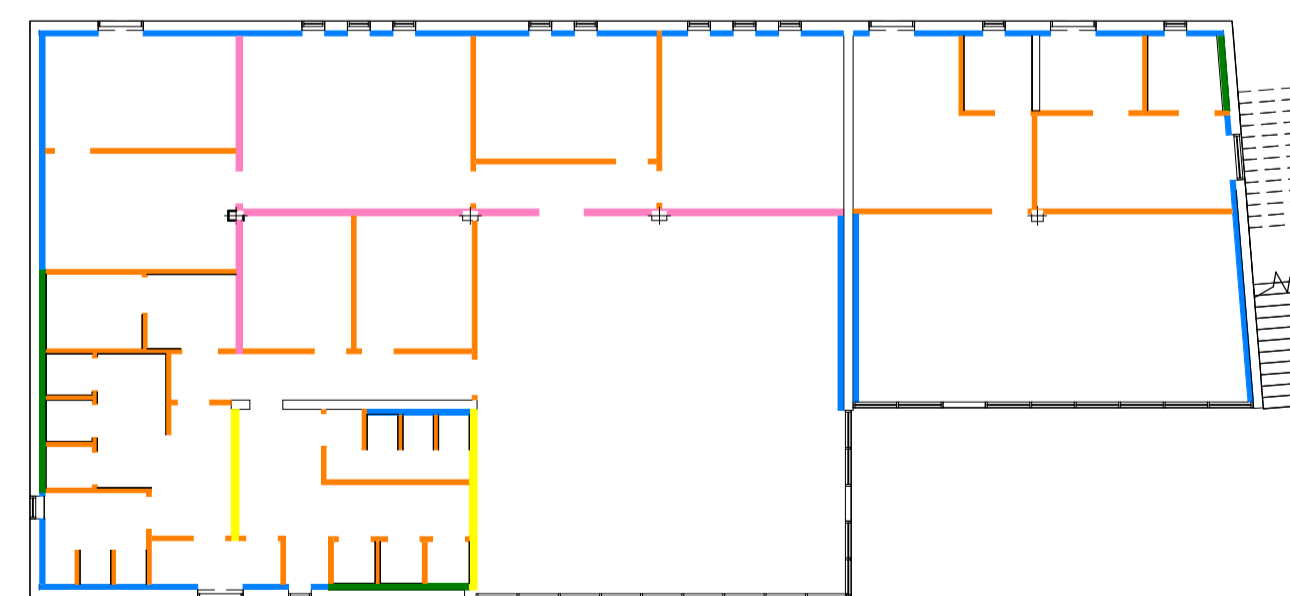
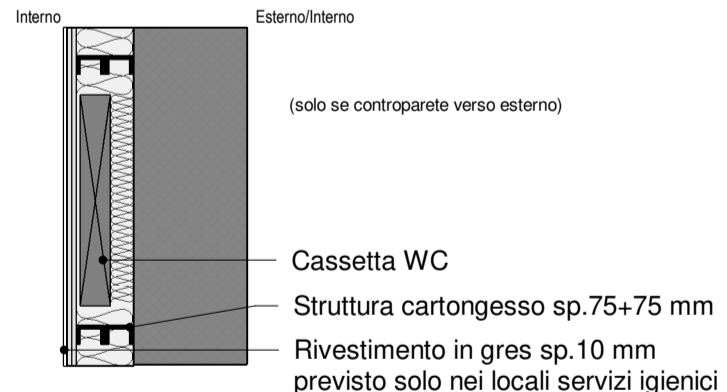
PARETE DIVISORIA 200



CONTROPARETE 145



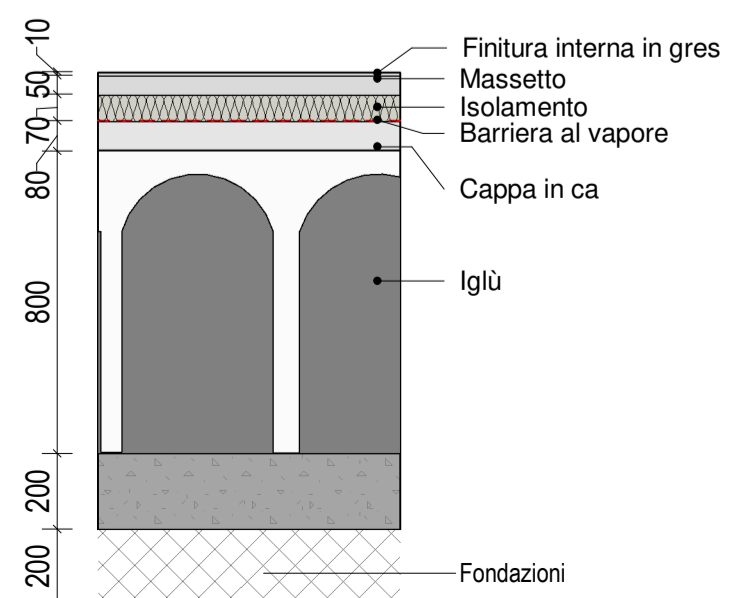
CONTROPARETE 175



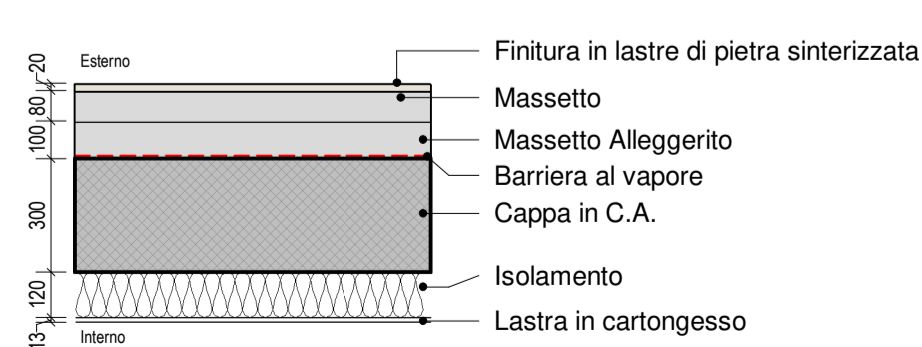
Abaco partizioni orizzontali

Scale 1 : 20

SOLAI O PT



COPERTURA



COMUNE DI CATANZARO

PROGETTAZIONE

Via Belvedere 8/10
30035 Mirano (VE)
www.fim-ingegneria.com
fim@fim-ingegneria.com
tel 041-5785711
fax 041-4355933

Via Belvedere 8/10
30035 Mirano (VE)
www.fim-ingegneria.com
divisoreimpianti@fim-ingegneria.com
tel 041-5785711
fax 041-4355933

Napoli
Via Flangini, 11
sisp.com@isipnet.it
tel. +39 081 412641

80131 Napoli
Via DEGLI ASTRONAUTI, 8
amministrazione@giacconsulting.it
tel. +39 081 0383761

PROGETTO

COMUNE DI CATANZARO
LAVORI DI COMPLETAMENTO DELLE OPERE
INTERNE DEL PORTO DI CATANZARO MARINA

EMISSIONE

PROGETTO DEFINITIVO

DISCIPLINA

ARCHITETTURA

TITOLO

D-CIRCOLO NAUTICO
Sezione AA, BB e CC - Abaco partizioni

REV.	DATA	FILE	OGGETTO	DIS.	APPR.
1	07/10/19	1259_D12_1.dwg	Riscontro lettera prot. 66962/19	AF	TT

ELABORATO N.

D12

DATA:	SCALA:	FILE:	J.N.:
22/07/2019	1:100 - 1:200	1259_D12_1.dwg	1259
PROGETTO:	DISEGNO:	VERIFICA:	APPROVAZIONE:
M. Favero	A. Fasolo	L. Masiero	T. Tassi