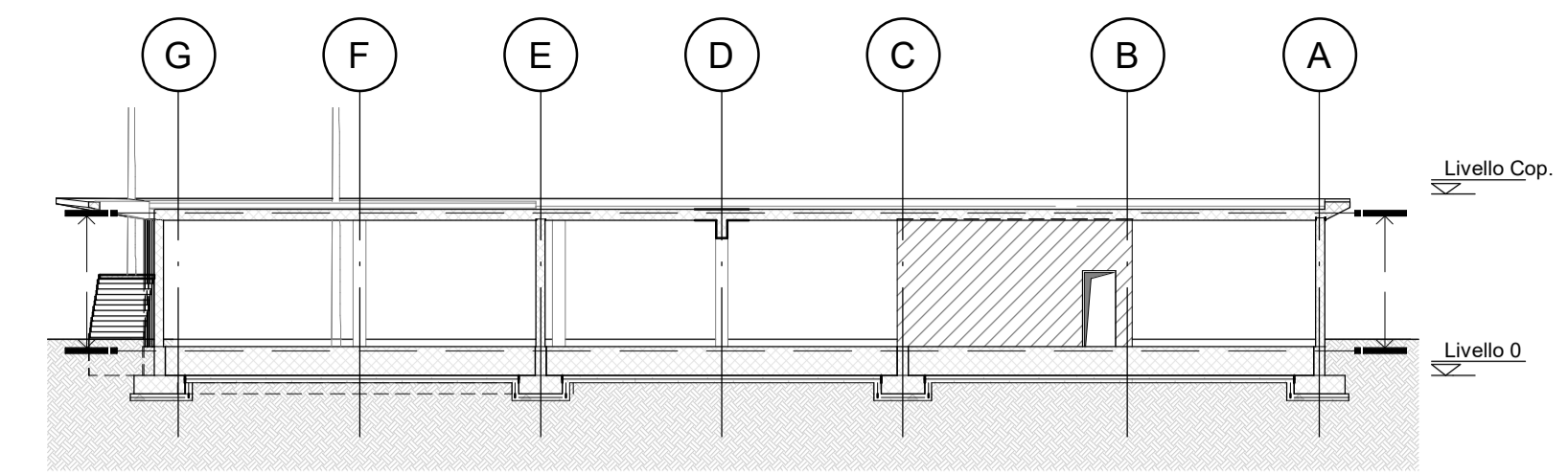
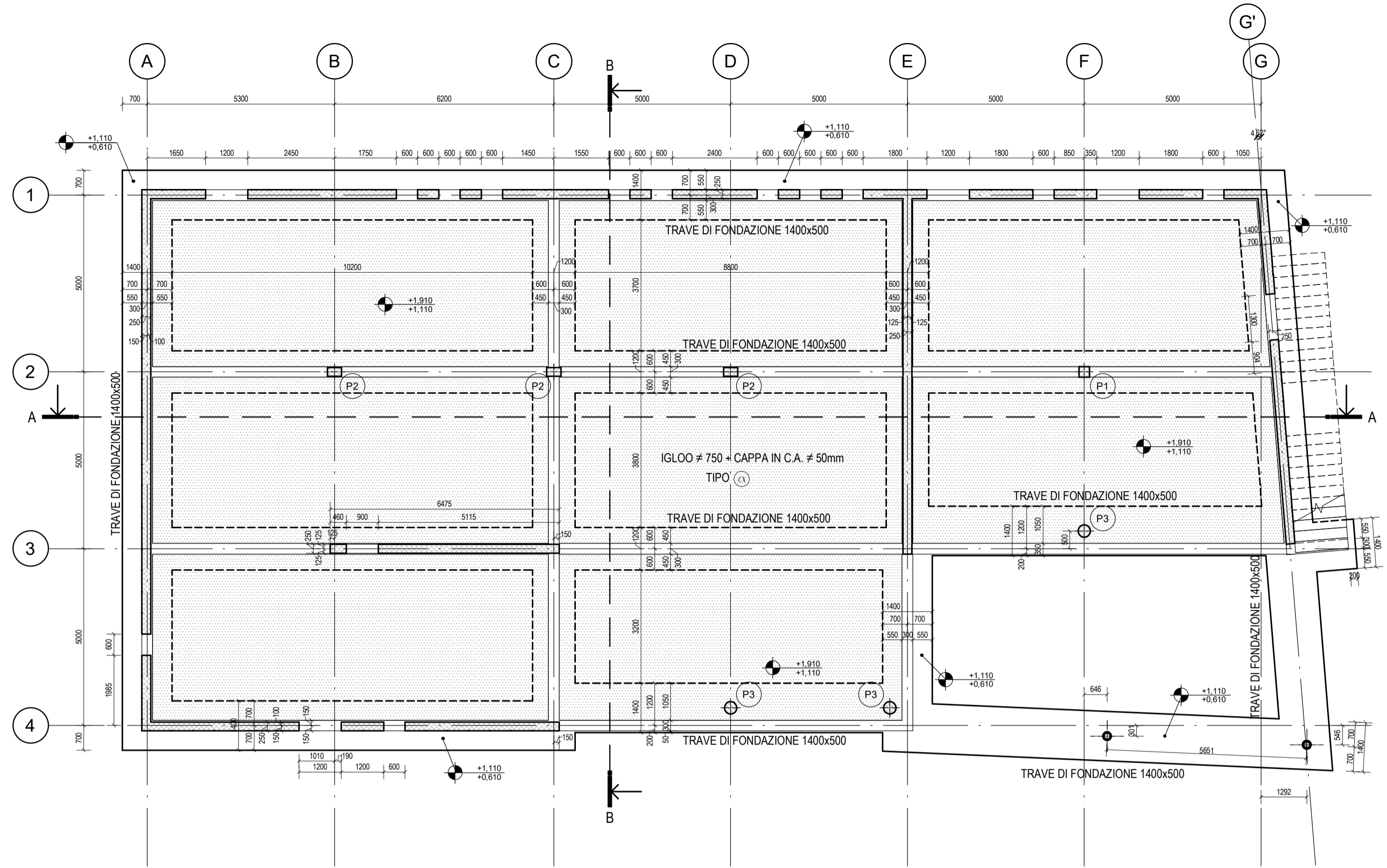


PIANTA FONDAZIONI

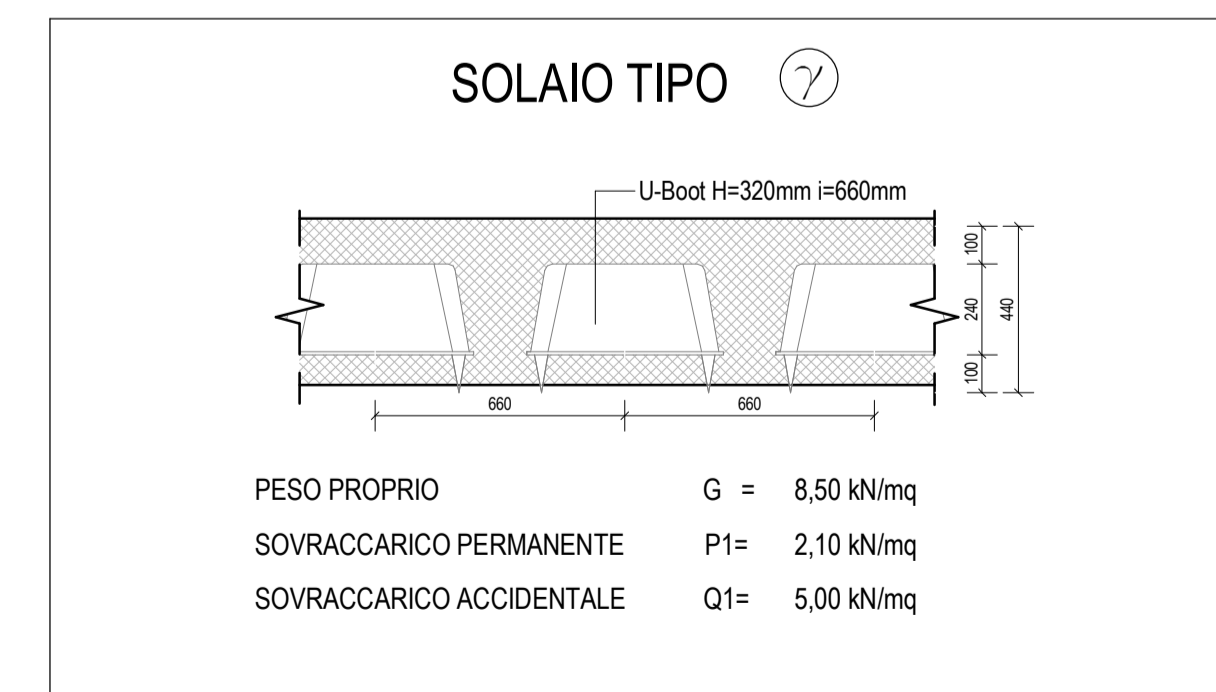
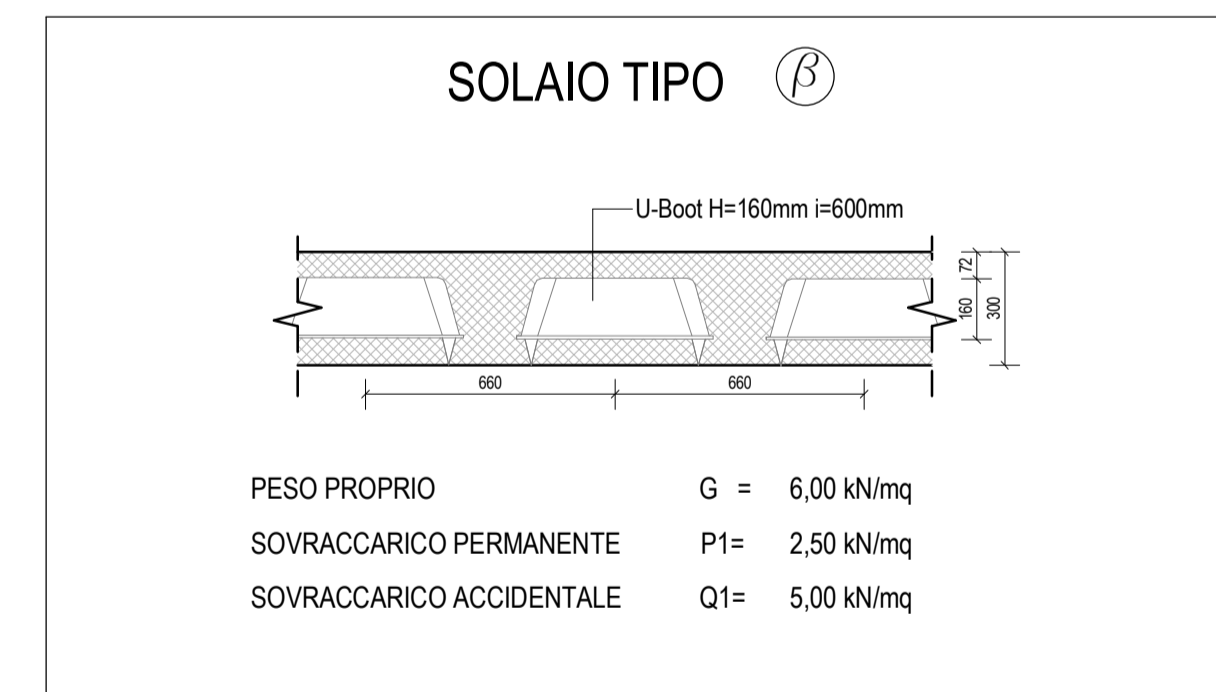
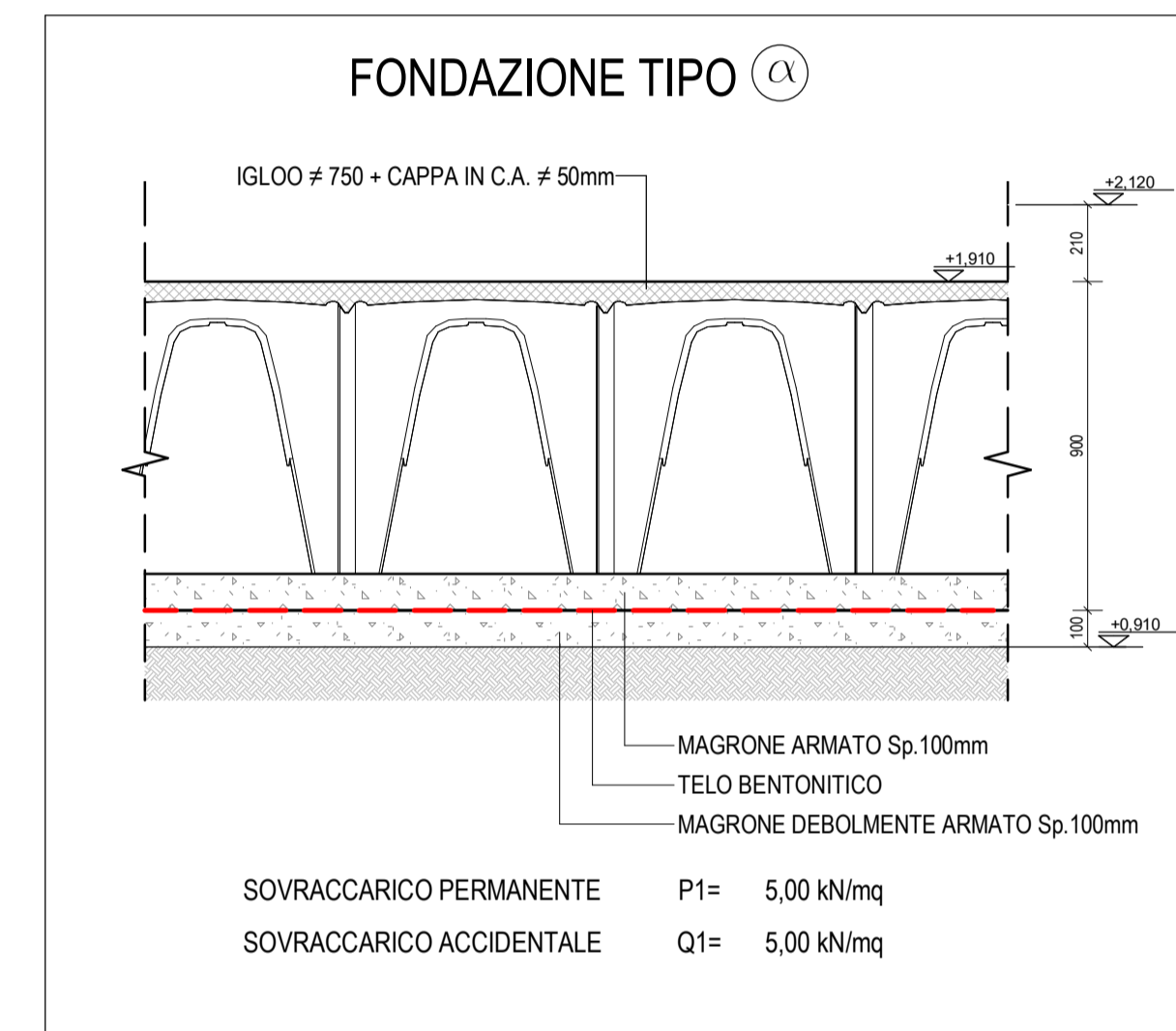
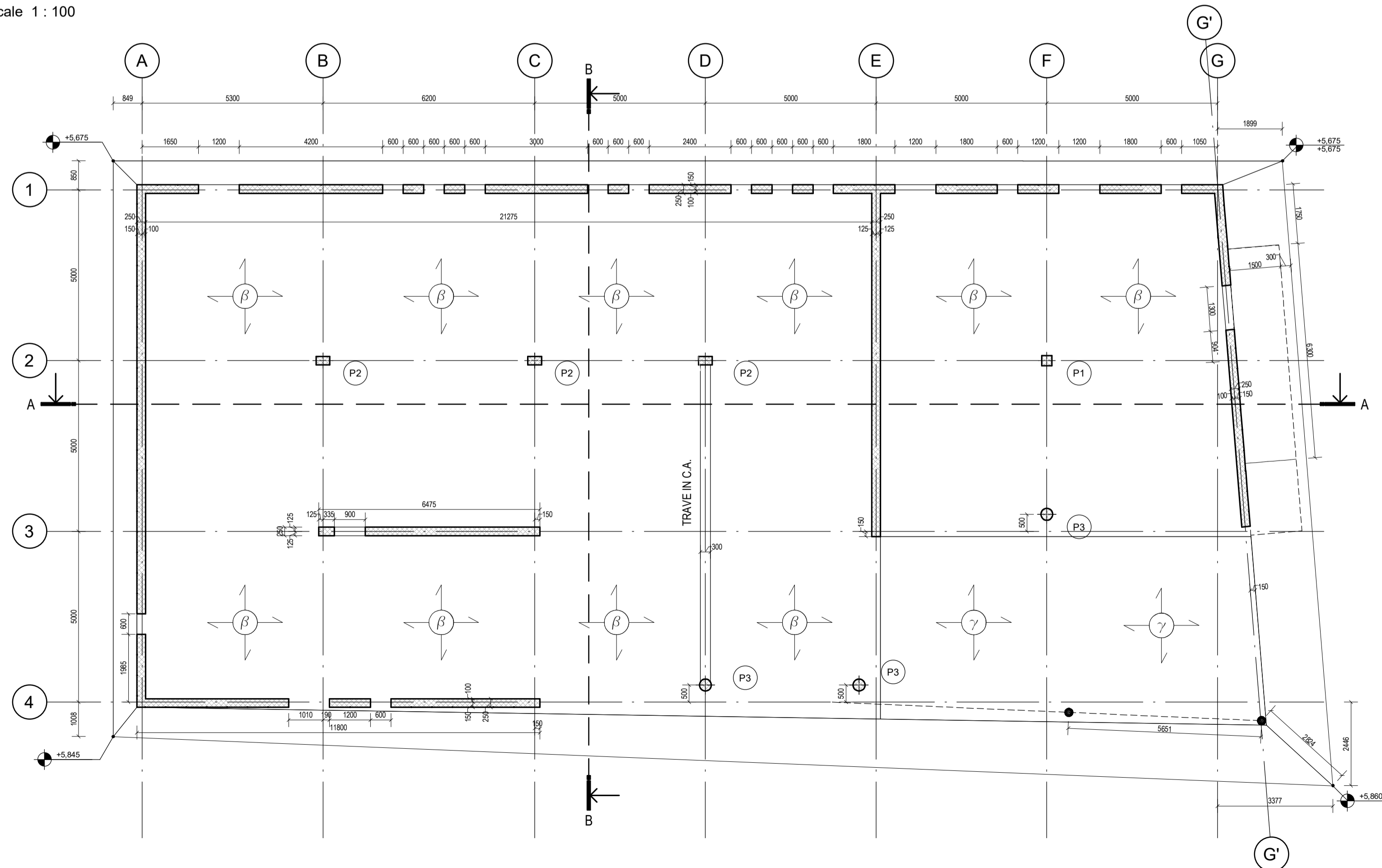
Scale 1 : 100



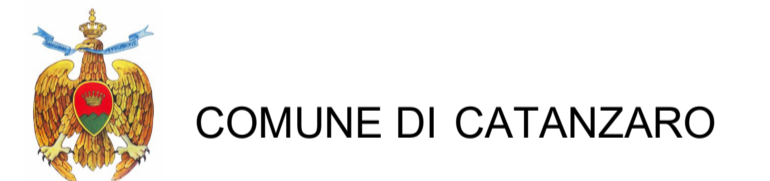
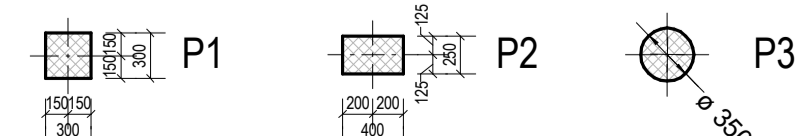
KEY - SECTION

PIANTA COPERTURA

Scale 1 : 100



LEGENDA PILASTRI



PROGETTAZIONE
F&M ingegneria
 Via Belvedere 8/10, 30035 Mirano (VE)
 www.f-m-ingegneria.com
 f.m@f-m-ingegneria.com
 tel. 041-578711 fax 041-4355933

F&M DIVISIONE IMPIANTI
 Via Belvedere 8/10, 30035 Mirano (VE)
 www.f-m-ingegneria.com
 divisioneimpianti@f-m-ingegneria.com
 Napoli Via Filangeri, 11
 sisac-ve@sisacve.it
 tel. +39 081 412641

SISPI
 80131 Napoli Viale DEGLI ASTRONAUTI, 8
 amministrazione@giacomisultr.it
 tel. +39 081 0383761

PROGETTO
 COMUNE DI CATANZARO
 LAVORI DI COMPLETAMENTO DELLE OPERE INTERNE DEL PORTO DI CATANZARO MARINA

EMISSIONE
 PROGETTO DEFINITIVO

DISCIPLINA
 STRUTTURE

TITOLO
 D - CIRCOLO NAUTICO
 Pianta fondazioni e copertura

REV.	DATA	FILE	OGGETTO	DIS.	APPR.
1	07/10/19	1259_D16_1.dwg	Riscontro lettera prof. no. 86962/19	S.P.	T.T.

ELABORATO N. **D16**

DATA:	SCALA:	FILE:	J.N.:
22/07/2019	1:100	1259_D16.dwg	1259
PROGETTO:	DISEGNO:	VERIFICA:	APPROVAZIONE:
D. Zammer	S. Pelizzon	D. Zammer	T. Tassi