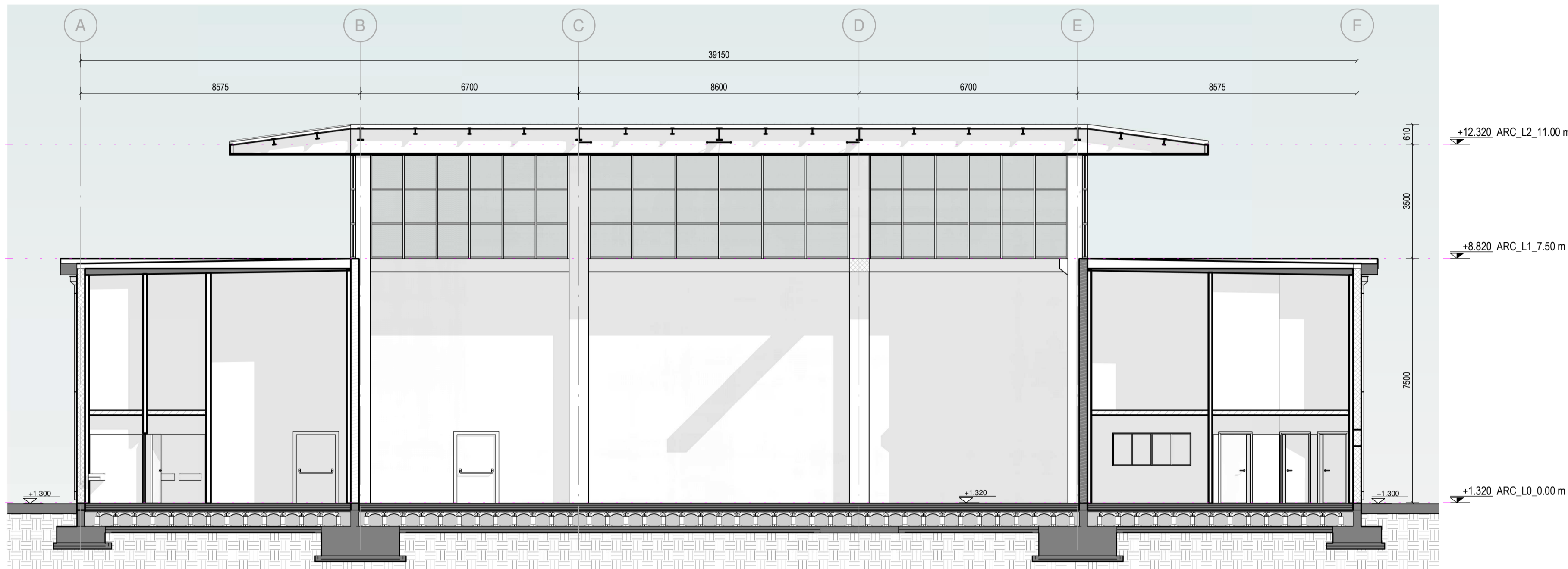


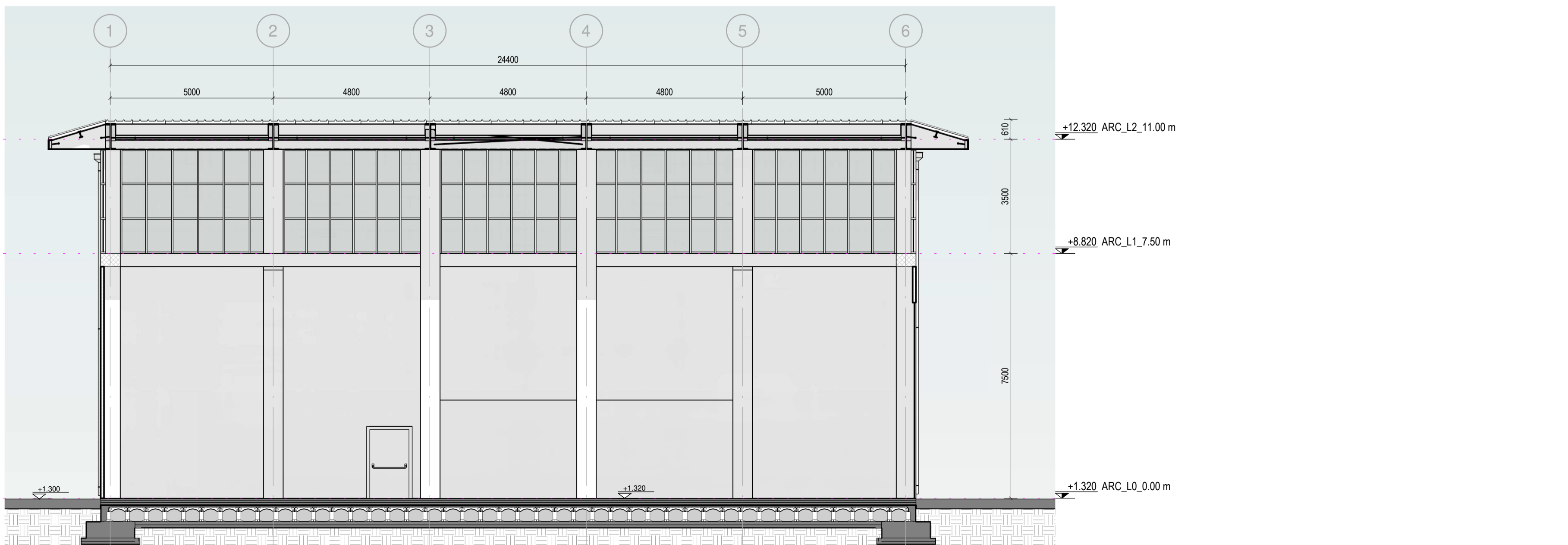
Sezione A-A

Scale 1 : 100



Sezione B-B

Scale 1 : 100



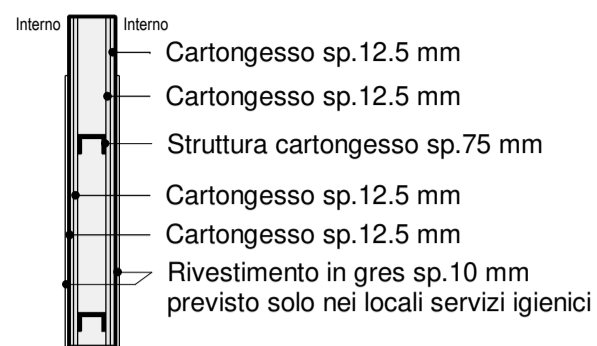
Sezione C-C

Scale 1 : 100

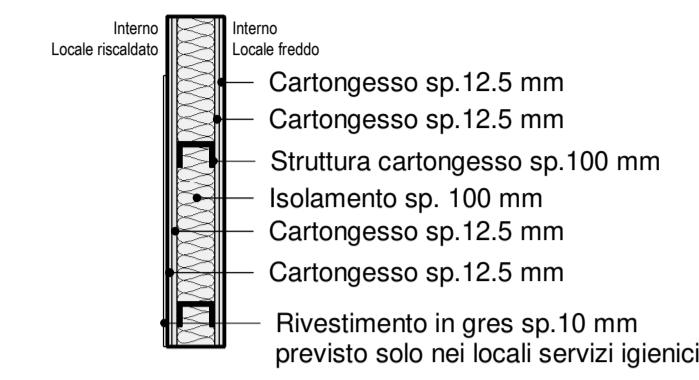
Abaco partizioni verticali

Scale 1 : 20

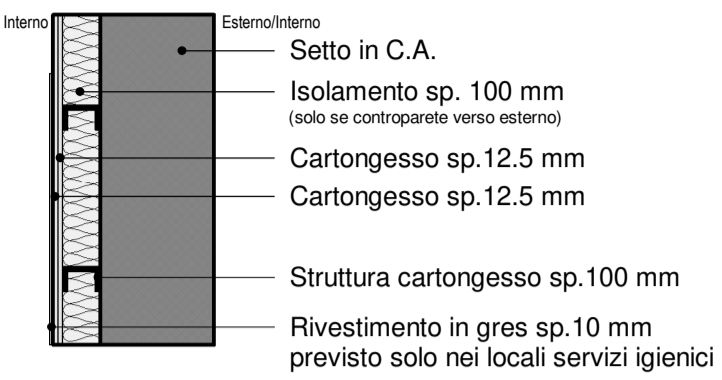
PARETE DIVISORIA 125



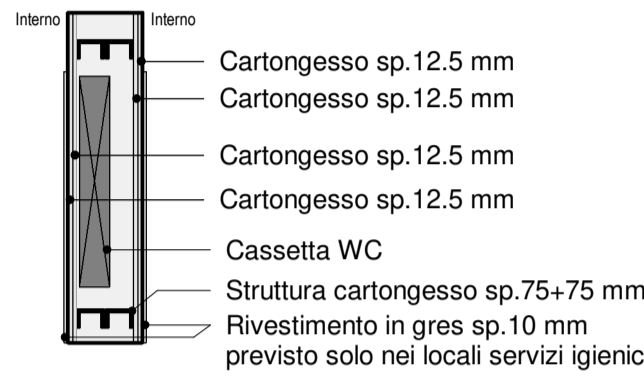
PARETE DIVISORIA 150



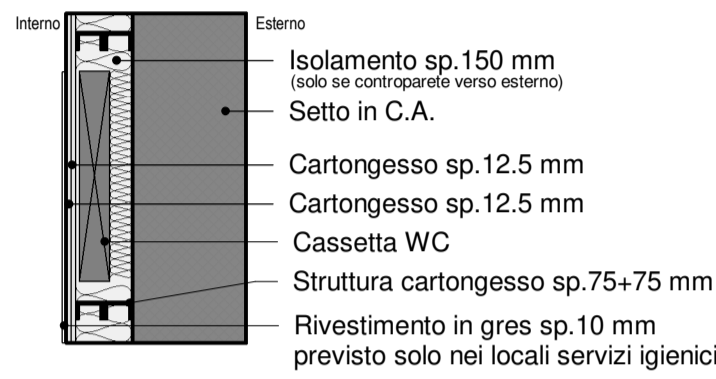
CONTROPARETE 125



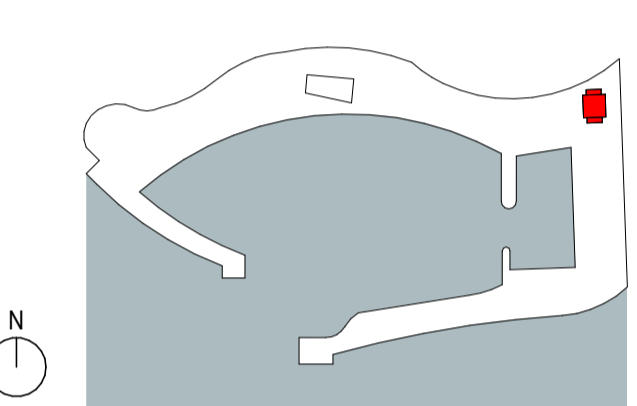
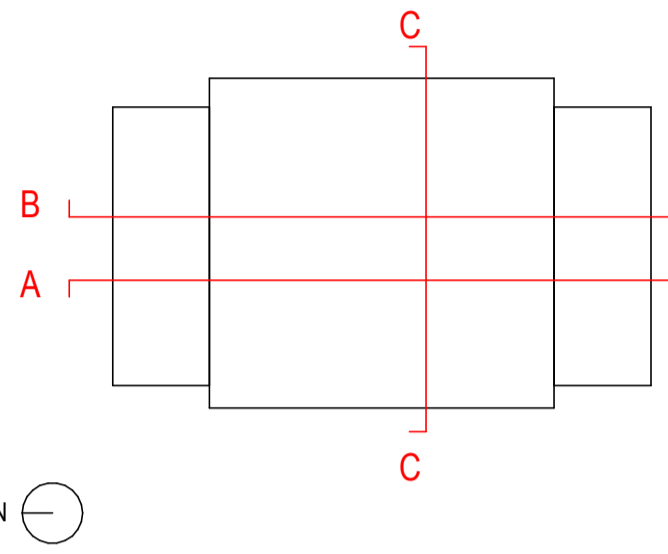
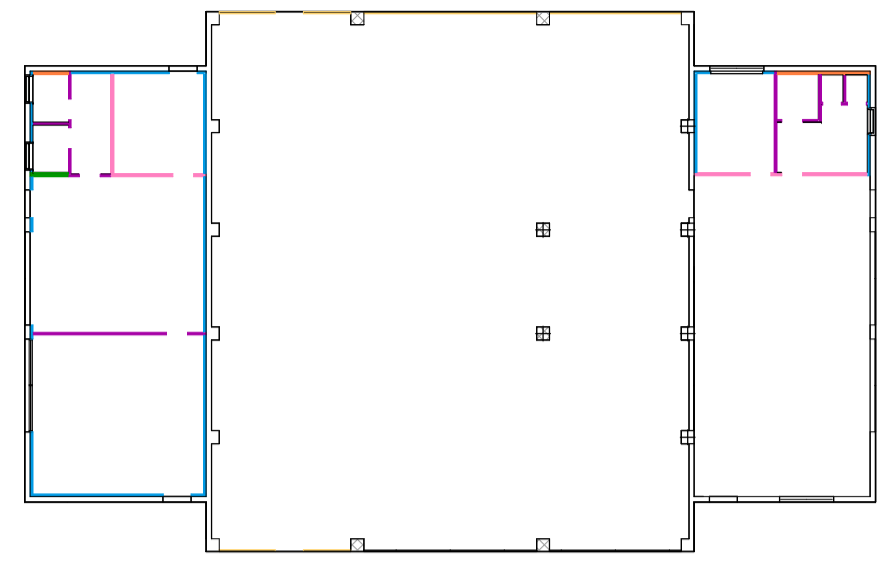
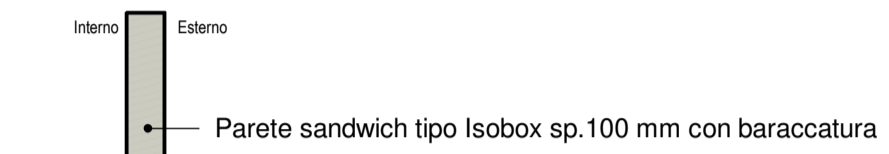
PARETE DIVISORIA 200



CONTROPARETE 175



PARETE SANDWICH 100

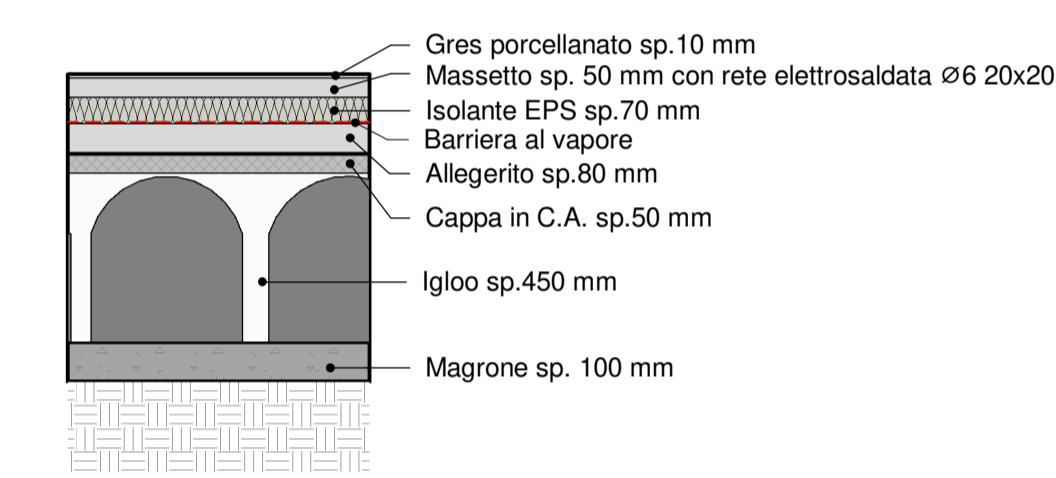


KEYPLAN

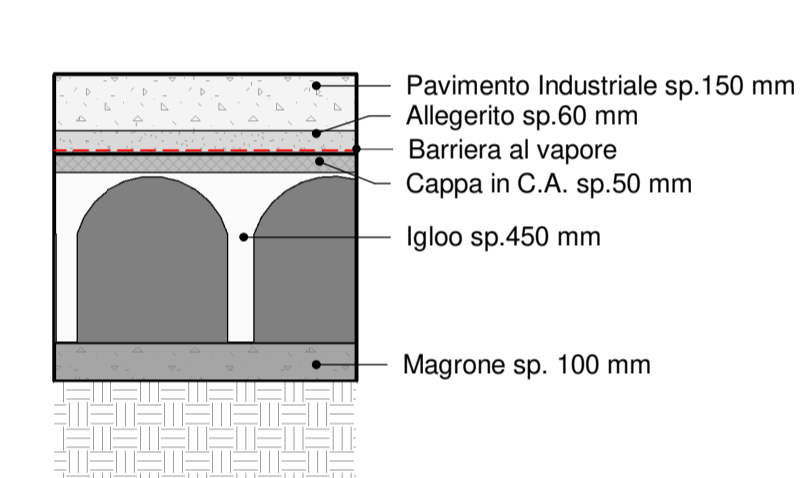
Abaco partizioni orizzontali

Scale 1 : 20

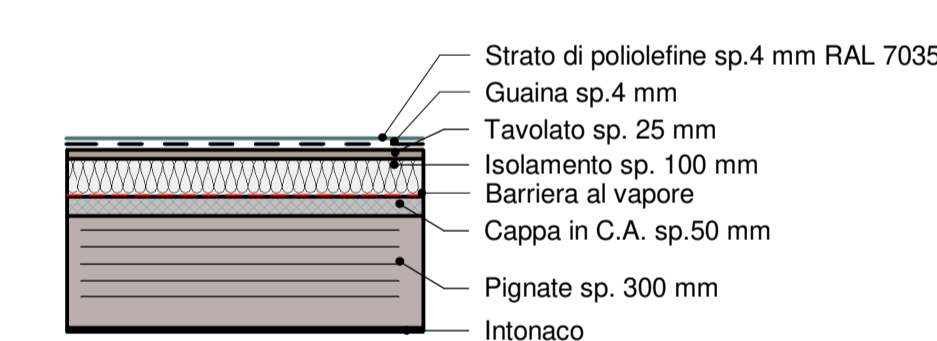
SOLAIO PT - LOCALI RISCALDATI



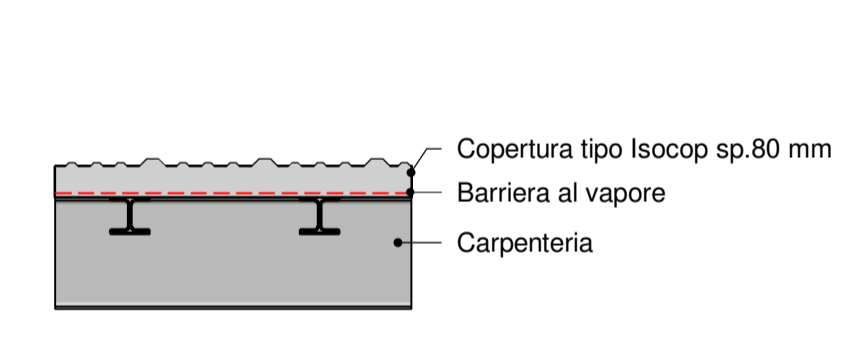
SOLAIO PT - LOCALI FREDDI



COPERTURA - LOCALI LATERALI



COPERTURA - RICOVERO IMBARCAZIONI



PROGETTAZIONE

Via Belvedere 8/10, 30035 Mirano (VE), www.fm-ingegneria.com, fm@fm-ingegneria.com

Via Belvedere 8/10, 30035 Mirano (VE), www.fm-ingegneria.com, divisionemirano@fm-ingegneria.com

Napoli, Via Farnese, 11, isoc.ced@isoc.it

80131 Napoli, Viale DEGLI ASTRONAUTI, 8, amministrazione@gliaconsulting.it

80131 Napoli, Viale DEGLI ASTRONAUTI, 8, amministrazione@gliaconsulting.it

PROGETTO

COMUNE DI CATANZARO

LAVORI DI COMPLETAMENTO DELLE OPERE

INTERNE DEL PORTO DI CATANZARO MARINA

EMISSIONE

PROGETTO DEFINITIVO

DISCIPLINA

ARCHITETTURA

TITOLO

E - Capannone cantieristica e rimessaggio

Sezione AA, BB e CC - Abaco partizioni

REV. DATA FILE OGGETTO DIS. APPR.

1 07/10/19 1299\_E12\_1.dwg Ricorrito lettera prot. no. 86962/19 AF TT

ELABORATO N.

DATA: 22/07/2019

SCALE: 1:100 - 1:20

FILE: 1299\_E12\_1.dwg

J.N. 1299

PROGETTO DISEGNO VERIFICA APPROVAZIONE

M. Favero A. Fasolo L. Masiero T. Tassi

E12