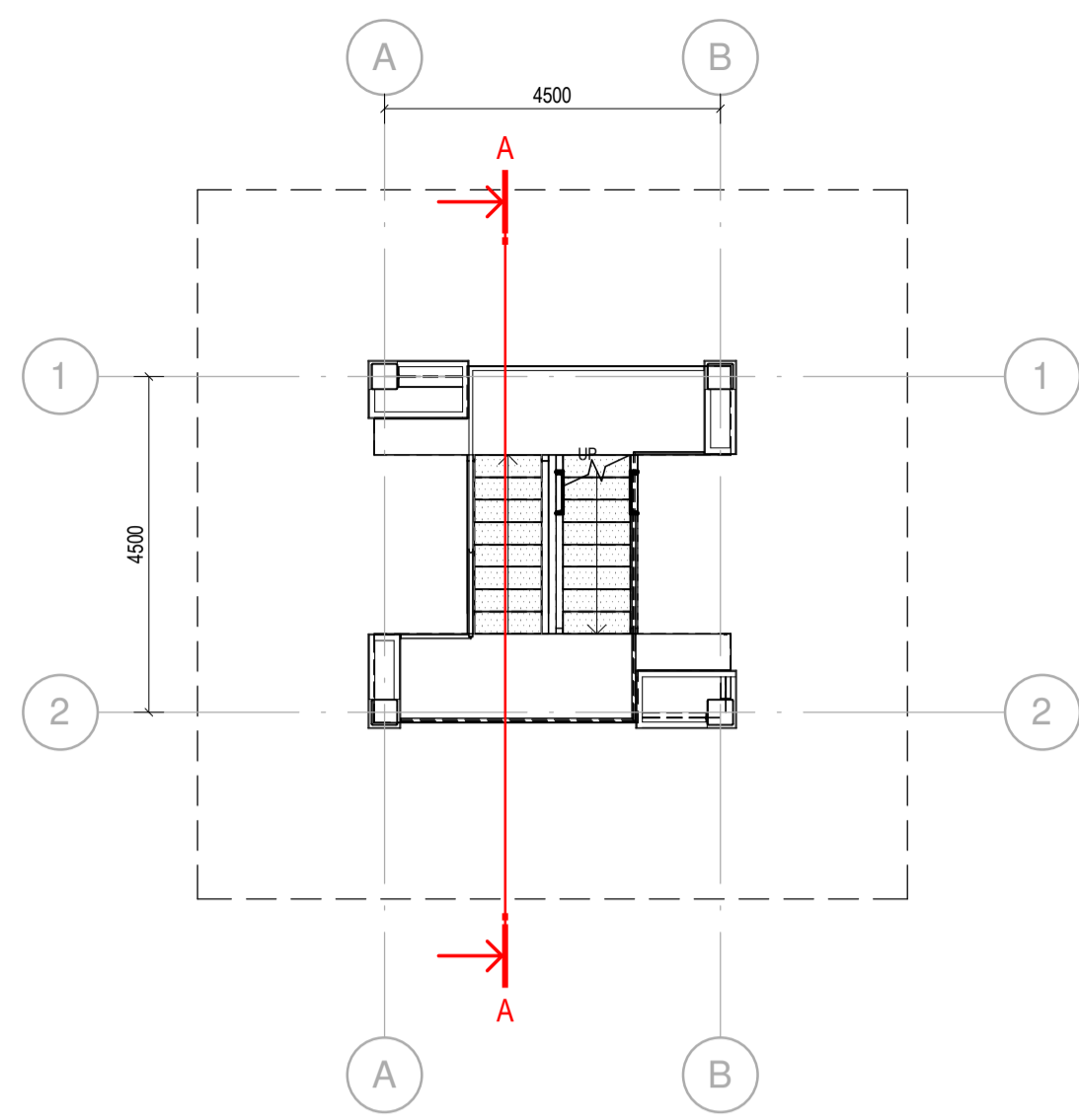
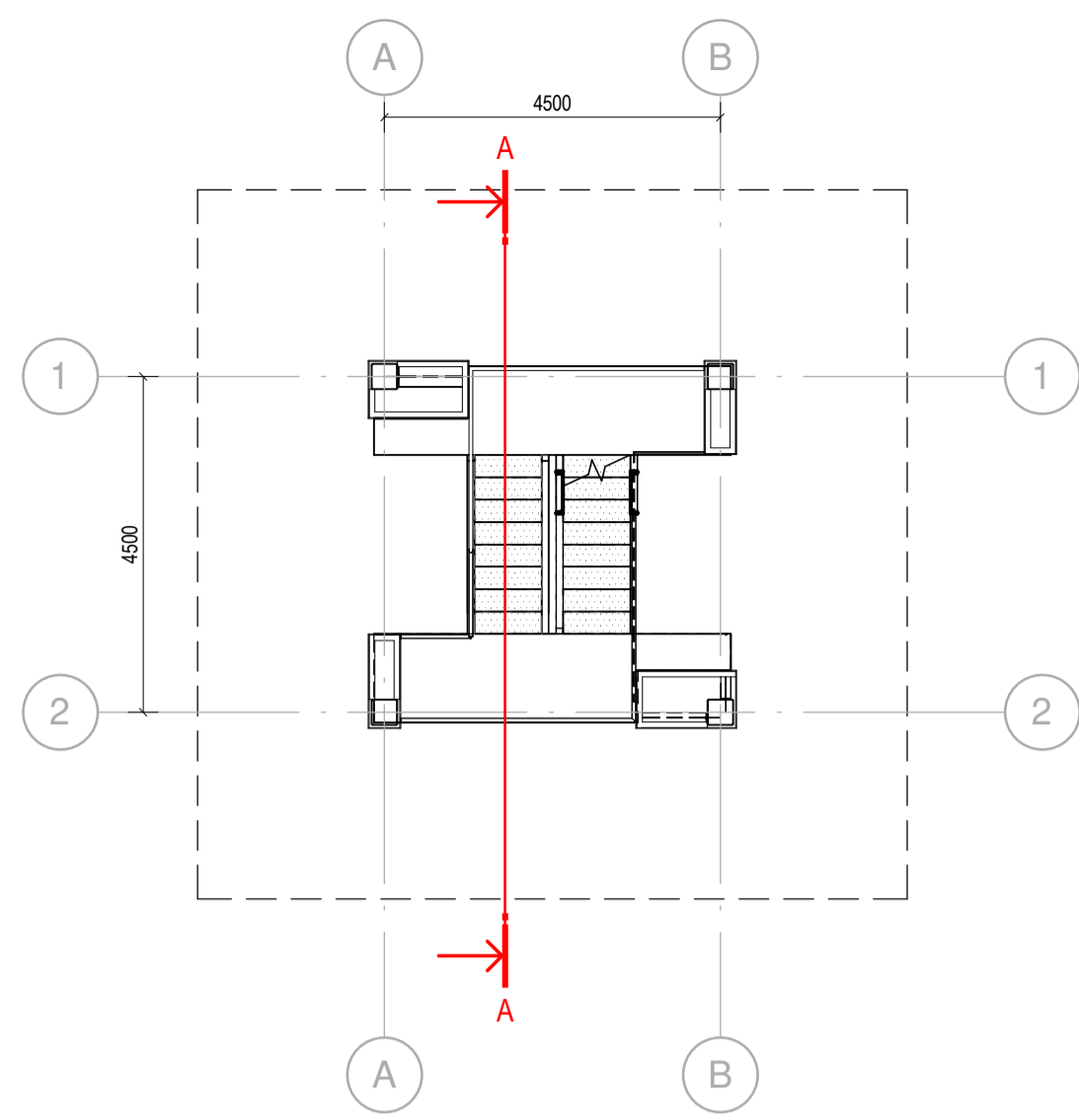


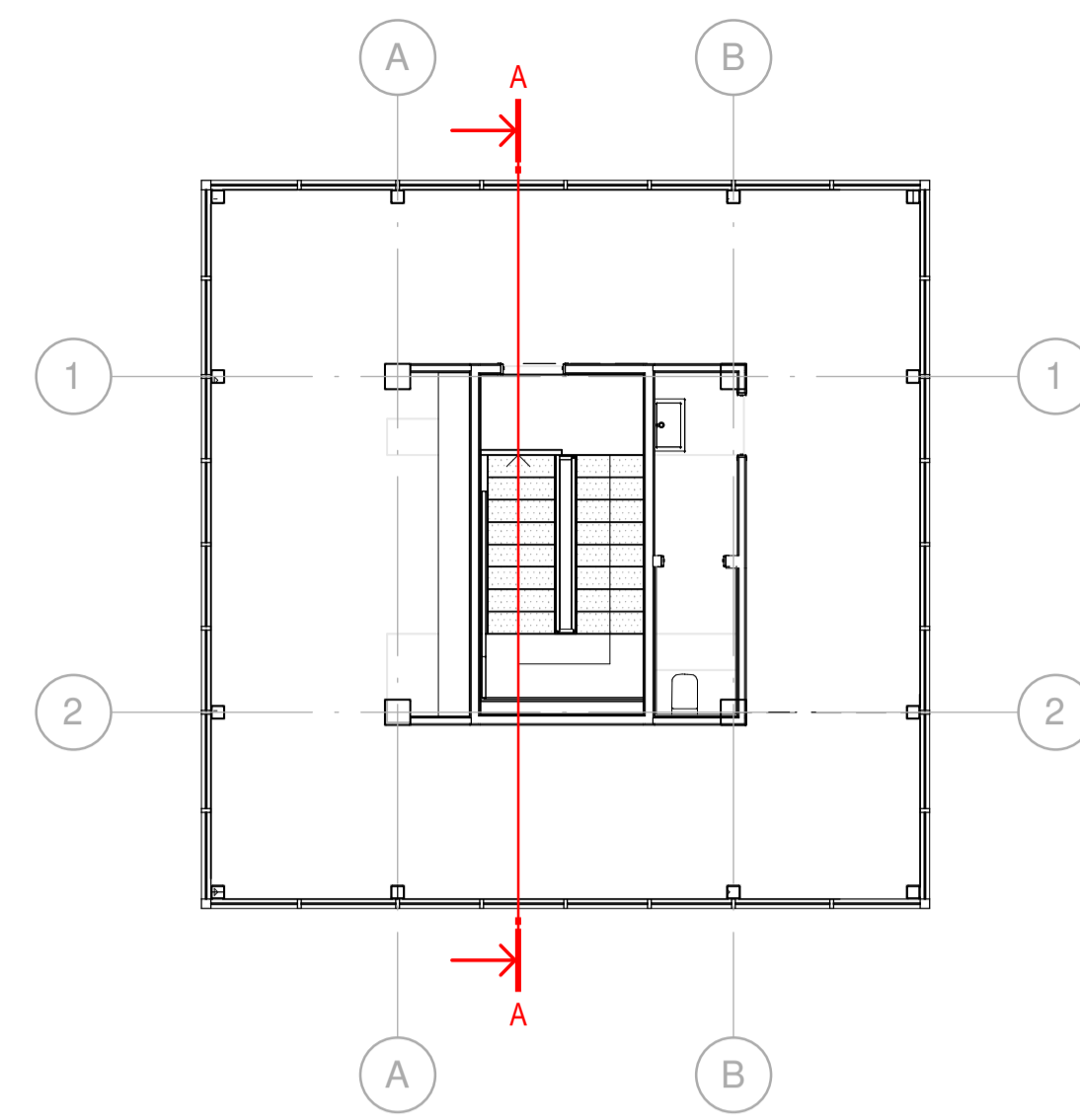
L0
Scale 1 : 100



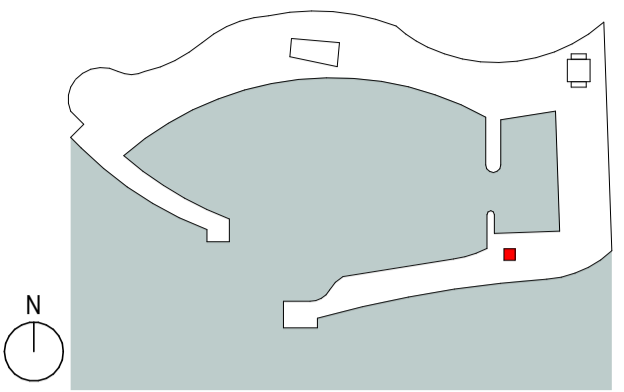
L1
Scale 1 : 100



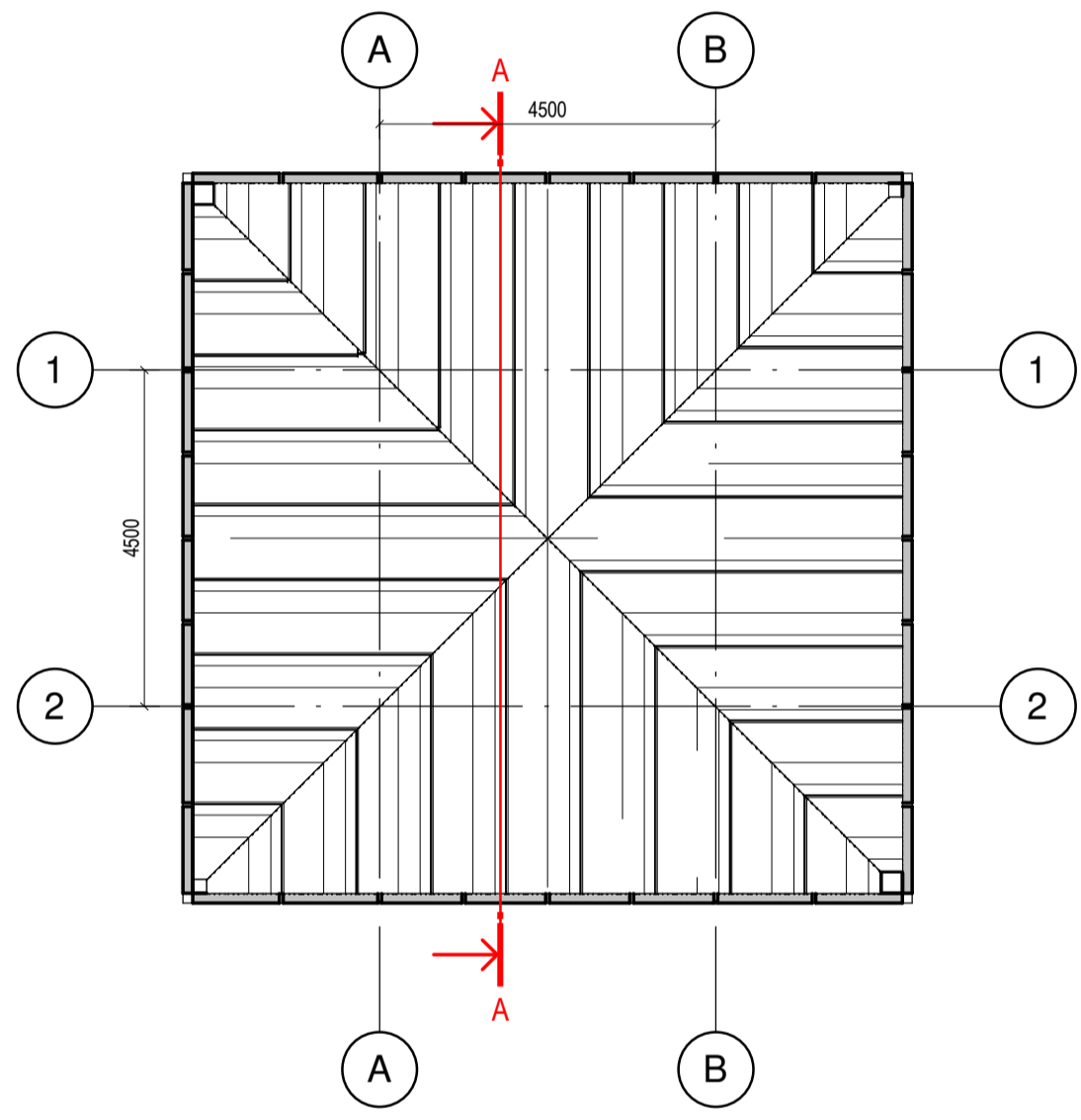
L2
Scale 1 : 100



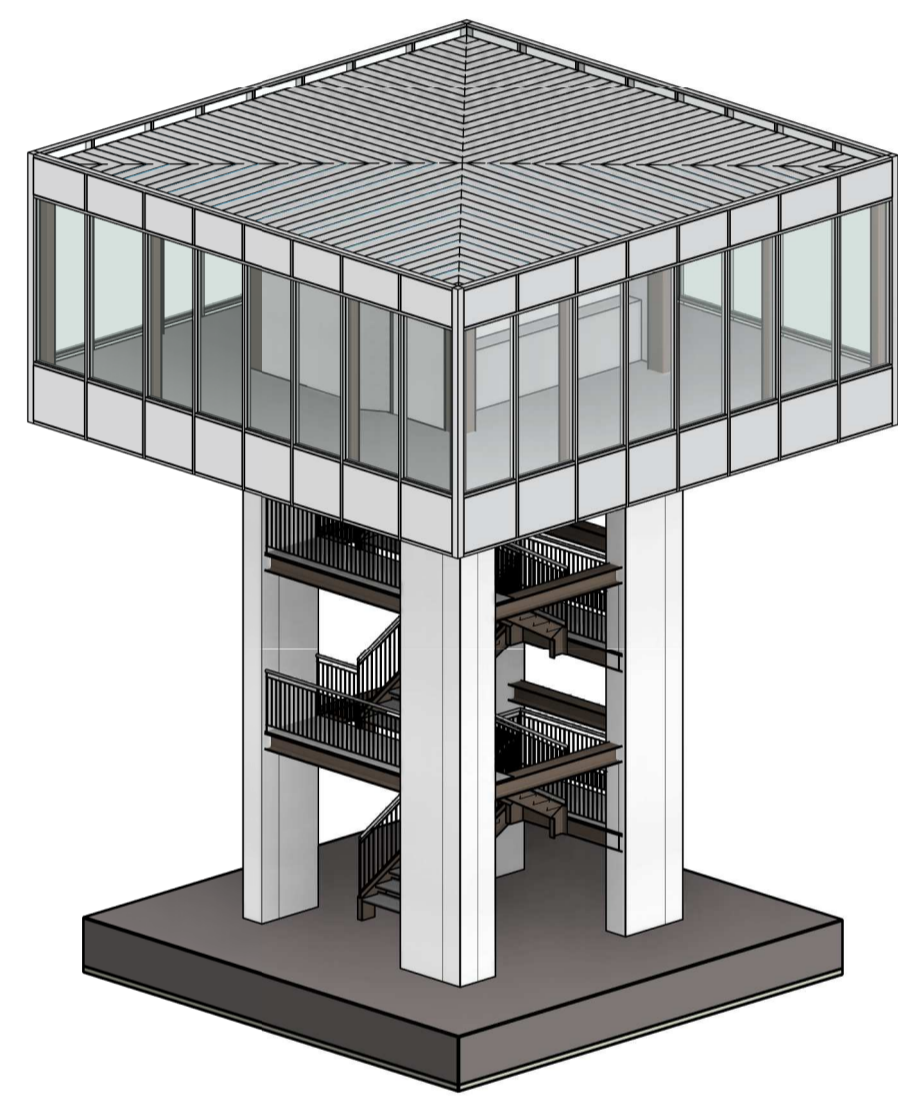
L3
Scale 1 : 100



KEYPLAN



L4
Scale 1 : 100

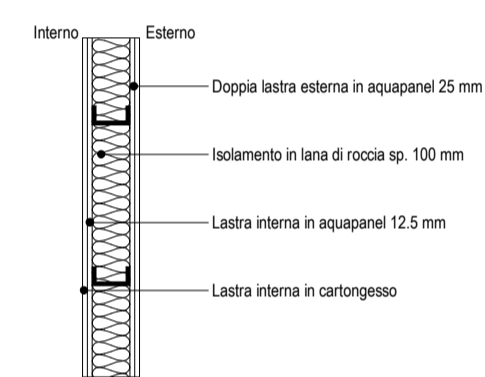


Vista tridimensionale

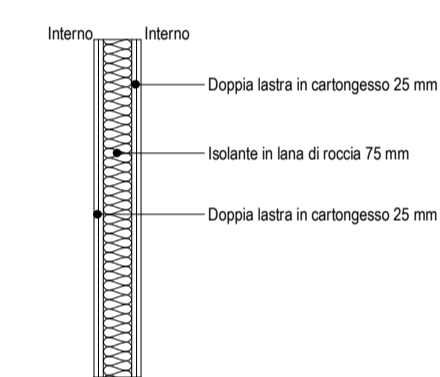
Abaco partizioni verticali

Scale 1 : 20

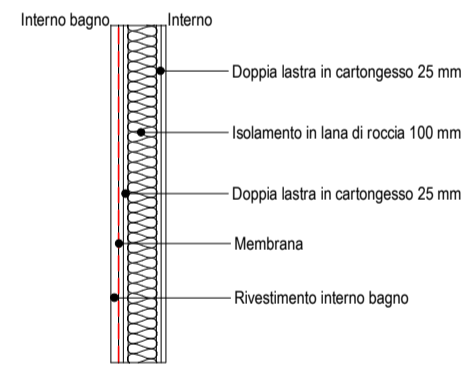
PARETE INTERNO-ESTERNO 150



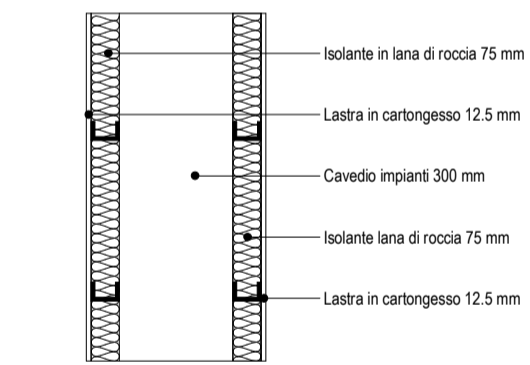
PARETE INTERNA 125



PARETE INTERNA 145

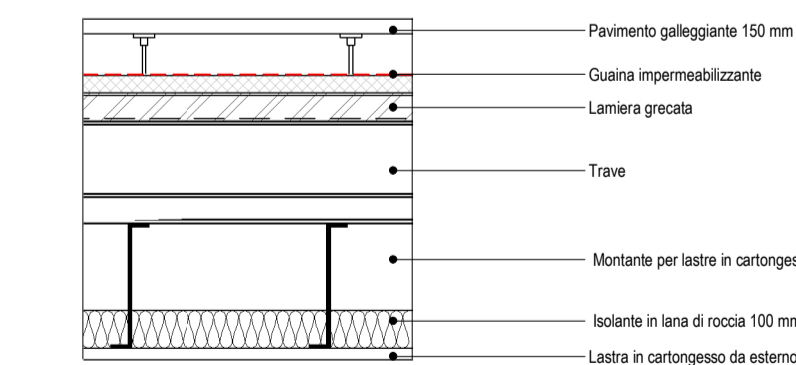


CAVEDO IMPIANTI

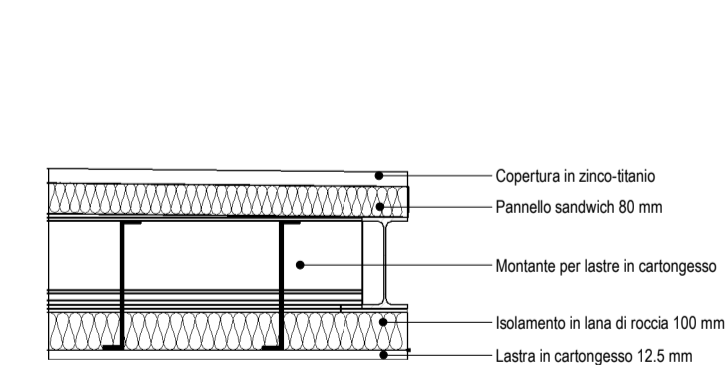


Abaco partizioni orizzontali

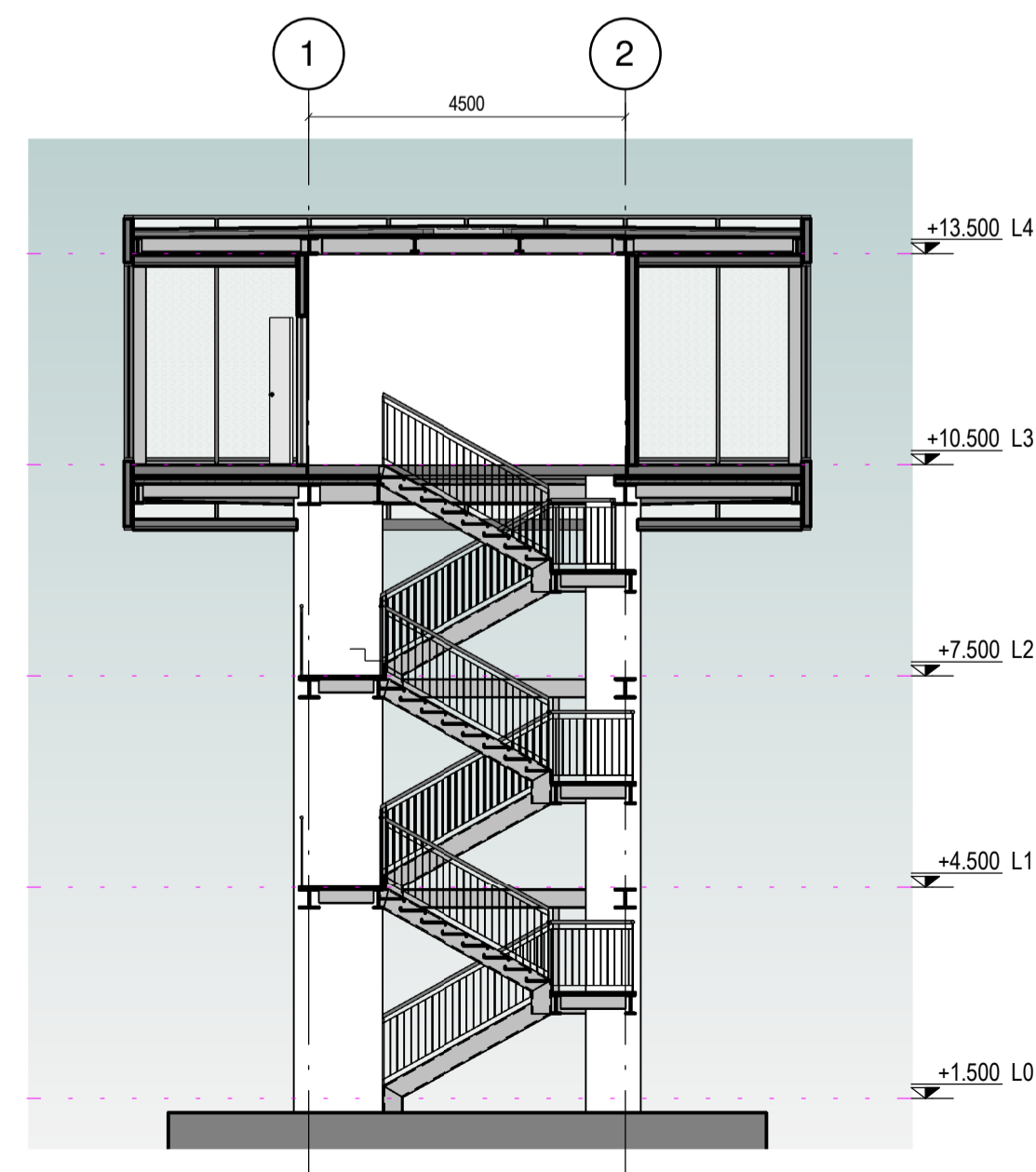
Scale 1 : 20



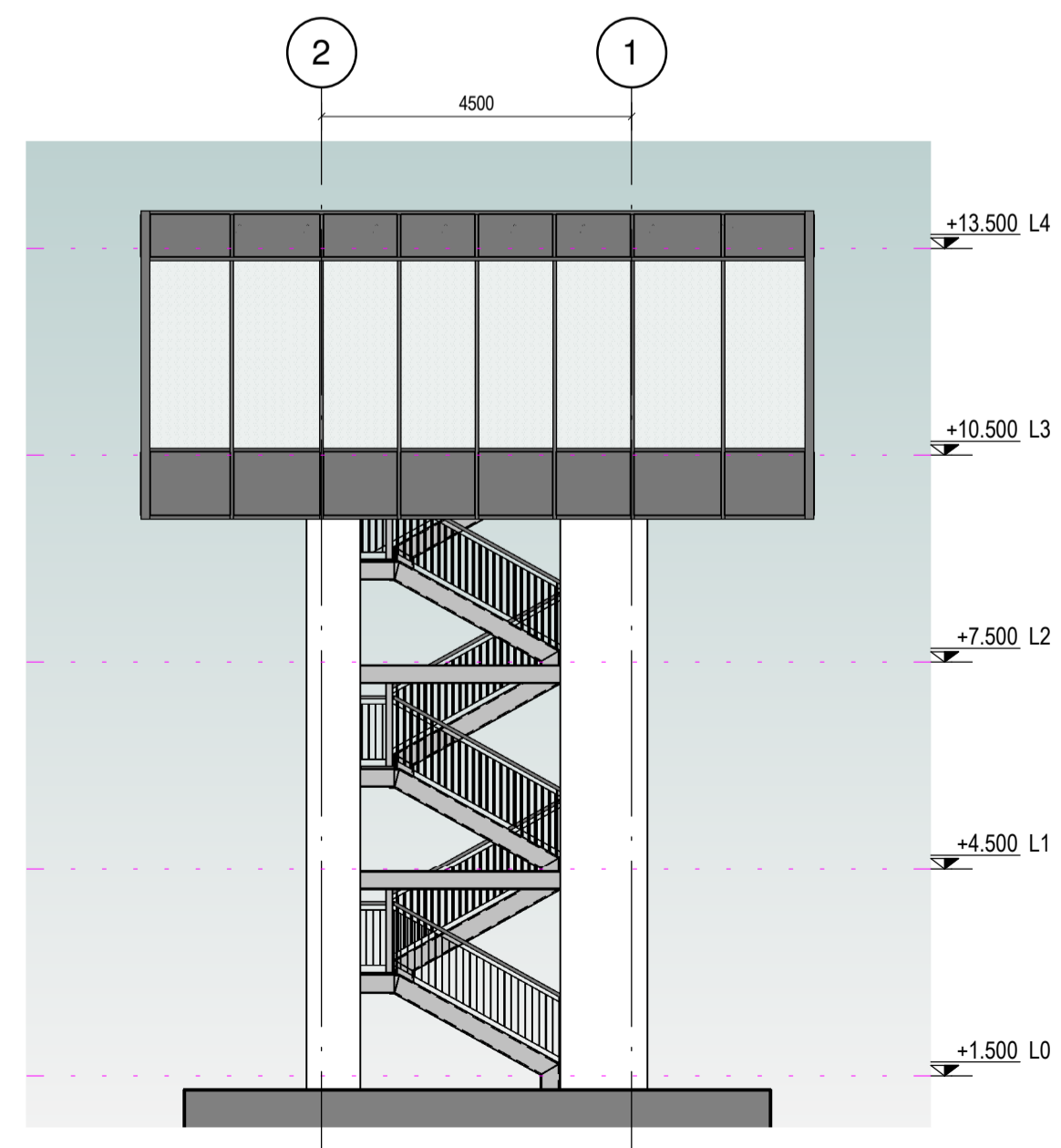
SOLAIO L3



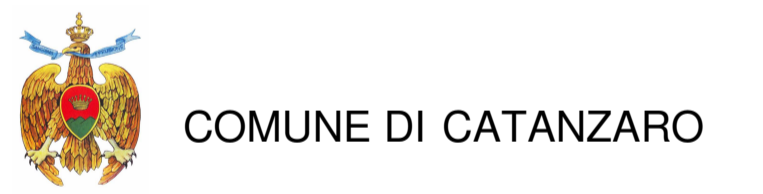
COPERTURA



Sezione A-A
Scale 1 : 100



Prospetto Est
Scale 1 : 100



COMUNE DI CATANZARO

PROGETTAZIONE
F&M ingegneria
 Via Belvedere 8/10
 30035 Mirano (VE)
 www.fm-ingegneria.com
 fm@fm-ingegneria.com
 tel 041-5785711
 fax 041-4355933

F&M DIVISIONE IMPIANTI
 Via Belvedere 8/10
 30035 Mirano (VE)
 www.fm-ingegneria.com
 divisioneimpianti@fm-ingegneria.com
 tel. +39 081 412641

SISPI
 Napoli
 Via Flangieri, 11
 sito: covid@sispi.net.it
 tel. +39 081 0383761

gia CONSULTING
 80131 Napoli
 Viale DEGLI ASTRONAUTI, 8
 amministrazione@giaconsulting.it
 tel. +39 081 0383761

PROGETTO
COMUNE DI CATANZARO
LAVORI DI COMPLETAMENTO DELLE OPERE
INTERNE DEL PORTO DI CATANZARO MARINA

EMISSIONE
PROGETTO DEFINITIVO

DISCIPLINA
ARCHITETTURA

TITOLO
F - Torre di Controllo
 Piante, Copertura, Sezioni, Prospetti

REV.	DATA	FILE	OGGETTO	DIS.	APPR.
1	07/10/19	1259_F10_1.dwg	Riscontro lettera prot.no 86962/19	AF	TT

ELABORATO N. **F10**

DATA:	SCALA:	FILE:	J.N.
22/07/2019	1:100 - 1:20	1259_F10_1.dwg	1259
PROGETTO:	DISEGNO:	VERIFICA:	APPROVAZIONE:
M. Favero	A. Fasolo	L. Masiero	T. Tassi