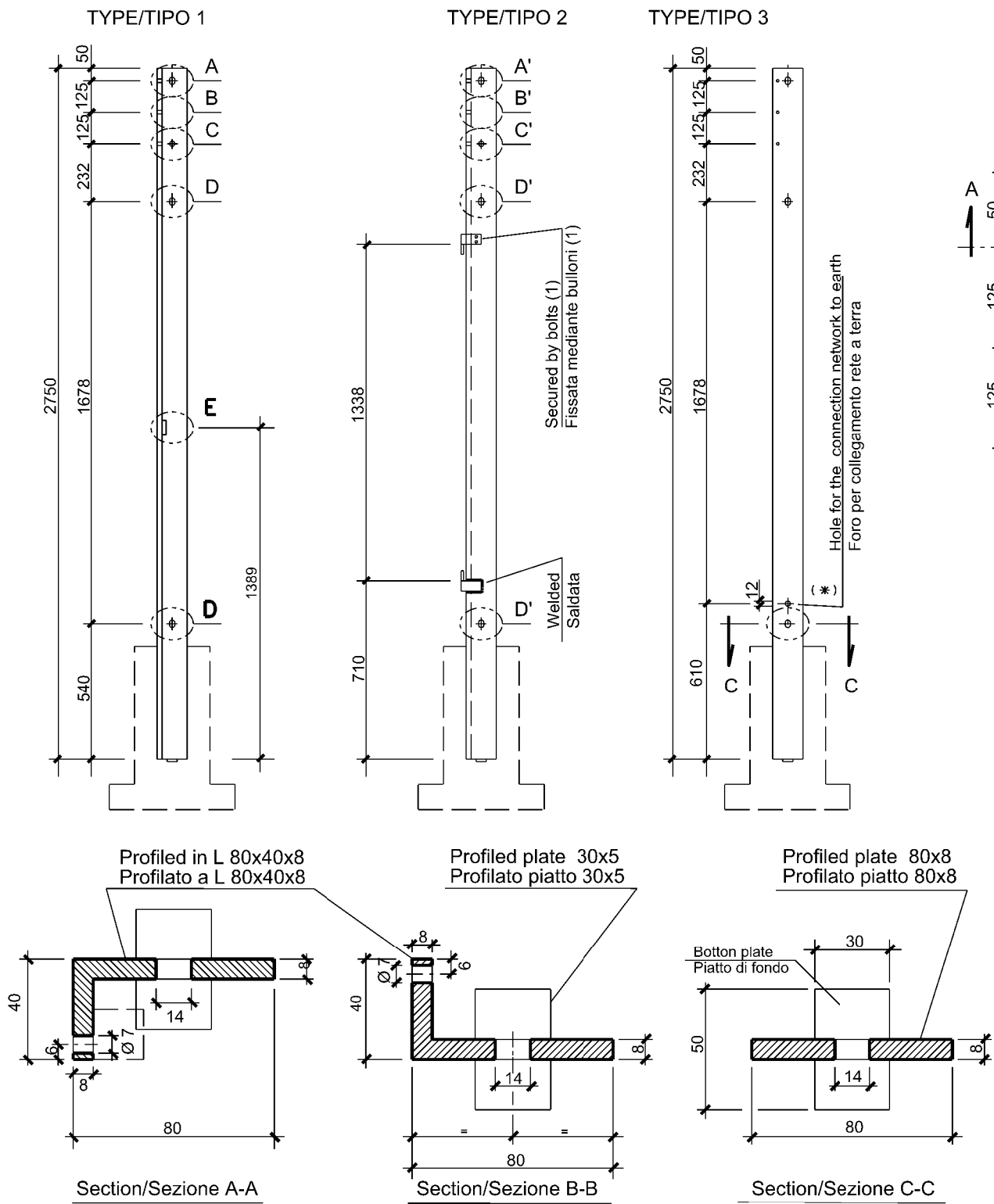


The sole responsibility of this publication lies with the author. The European Union is not responsible for any use that may be made of the information contained therein.

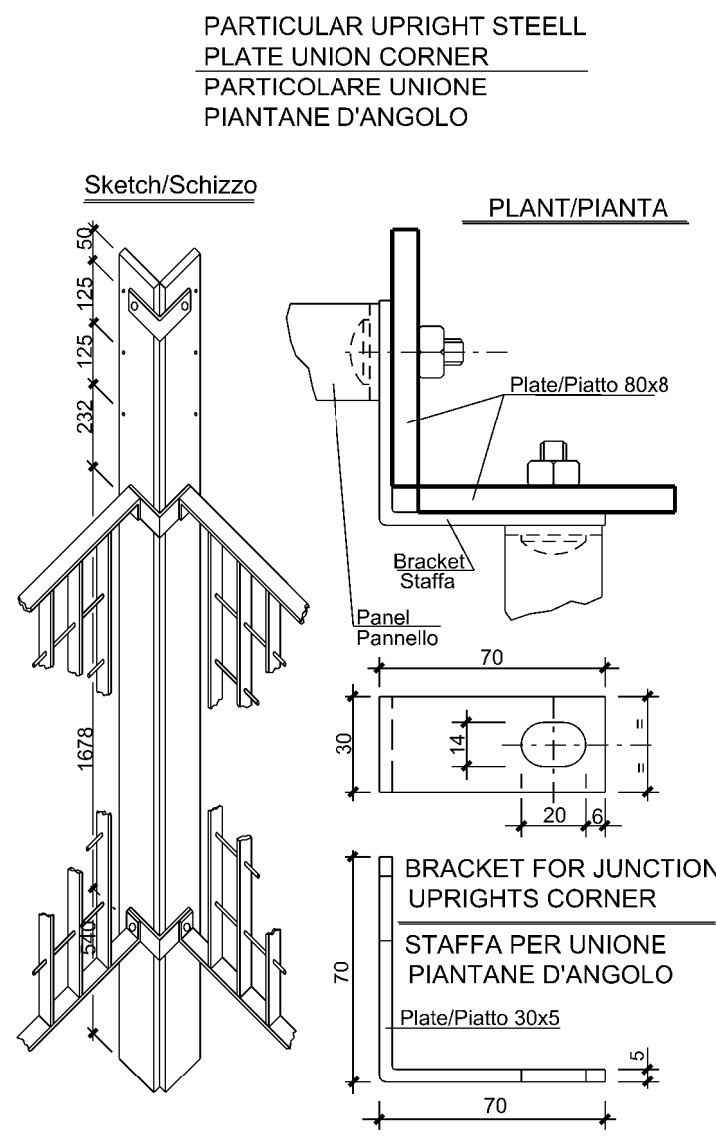
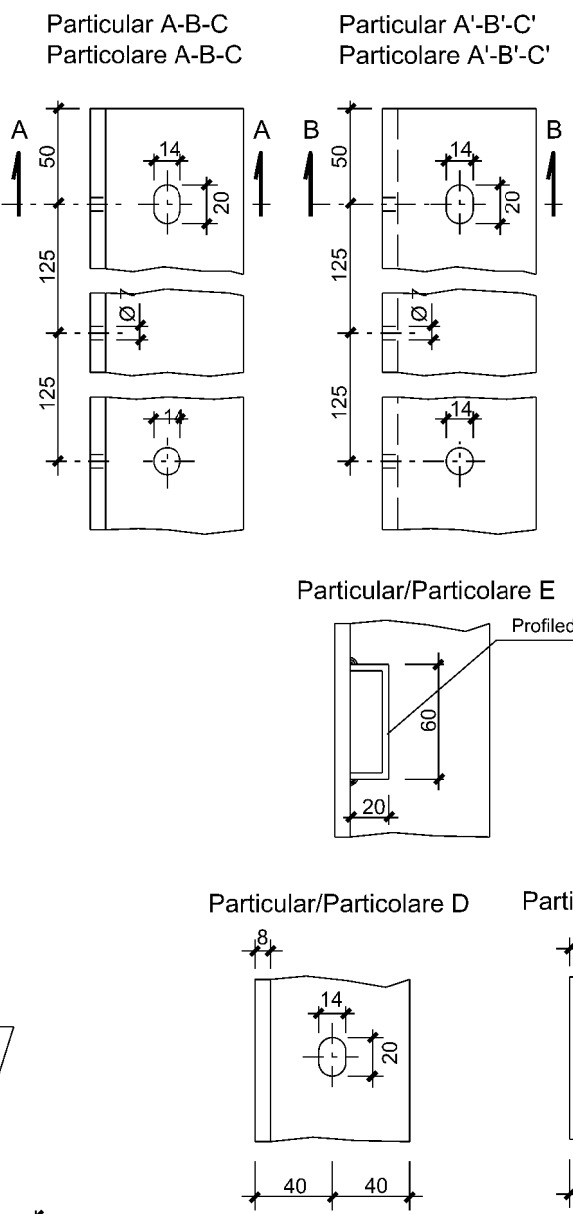


NOTES

MATERIALS:
 -Upright steel plate type 1 and 2, profiled in L 80x40x8 in steel S235JR, UNI-EN 10025
 -Upright steel plate type 3, profiled 80x8 in steel S235JR, UNI-EN 10025
 -Bottom plate, profilled plate 30x5 UNI EU 58 of steel S235JR, UNI-EN 10025
 -Bracket for floor union corner, profiled plate 30x5 UNI EU 58 in steel S235JR, UNI-EN 10025
 -Profiled 60x20x2 UNI-EN 10025 (part.E)
 Corrosion protection: dip galvanized UNI 5744.
 Approximative weight
 -Upright steel plate type 1 and 2, Kg 20
 -Upright steel plate type 3, Kg 14
DESTINATION:
 -type 1, Upright steel plate for door (side lock)
 -type 2, Upright steel plate for door (side hinges)
 -type 3, line upright steel plate with a hole (*) for ground network connecting
 (1) The holes for fixing the hinge they must be performed at construction sites
 The bracket mounting bolts are the same as for the fastening use for panels
 The mounting nuts for the plate upright steel plate union corner are to be spot welded after mounting and tightening

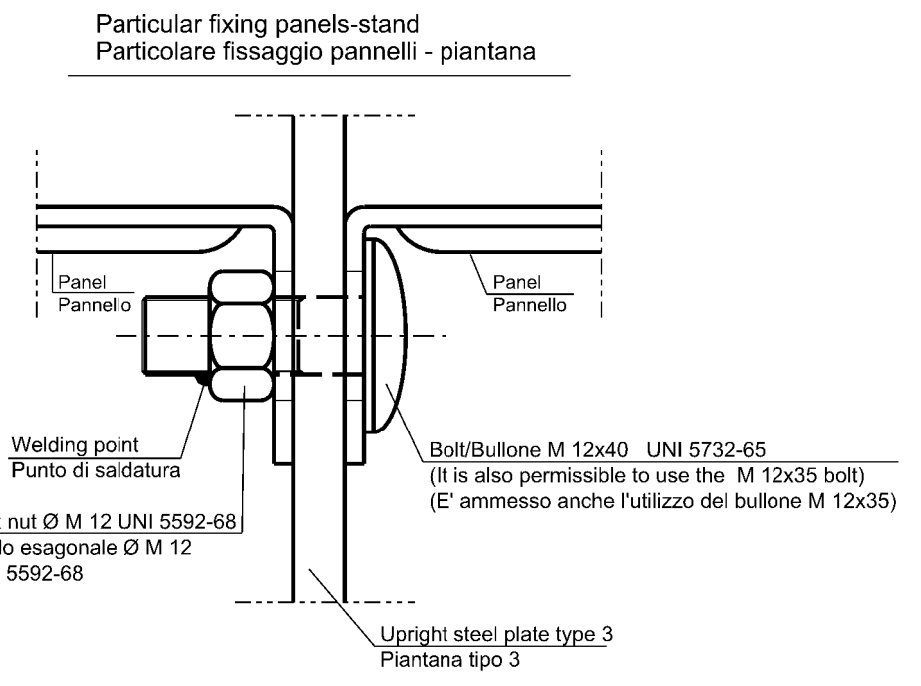
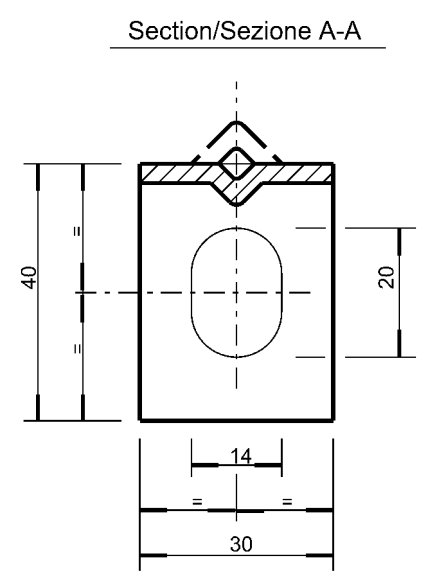
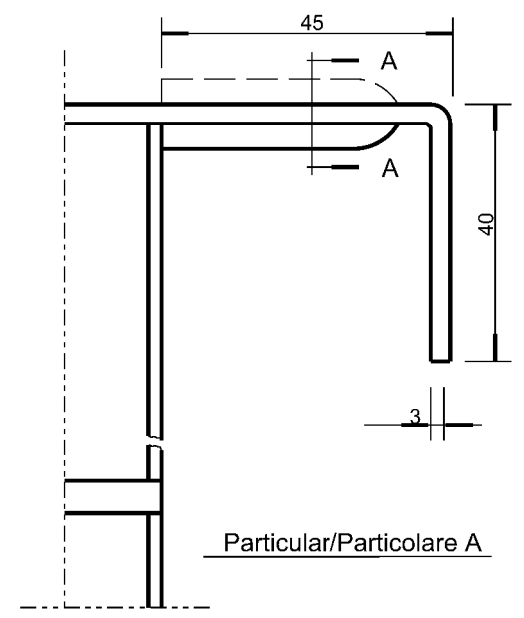
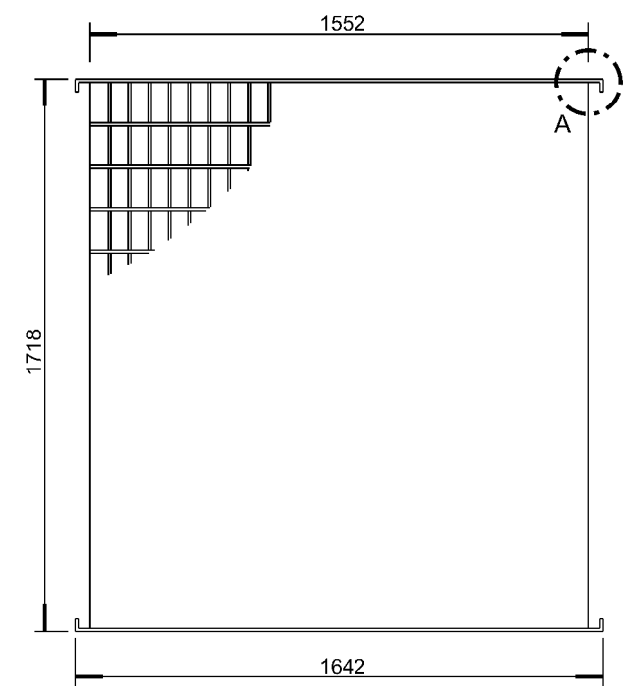
NOTE

MATERIALI:
 -Piantana tipo 1 e 2, profilato a L 80x40x8 in acciaio S235JR, UNI-EN 10025
 -Piantana tipo 3, profilato 80x8 in acciaio S235JR, UNI-EN 10025
 -Piatto di fondo, profilato piatto 30x5 UNI EU 58 di acciaio S235JR, UNI-EN 10025
 -Staffa per unione piantane d'angolo, prof.piatto 30x5 UNI EU 58 in acciaio S235JR, UNI-EN 10025
 -Profilato 60x20x2 UNI-EN 10025 (part.E)
 Protezione anticorrosiva: zincatura per immersione UNI 5744
 Peso approssimativo:
 -Piantana tipo 1 e 2, Kg 20
 -Piantana tipo 3, Kg 14
DESTINAZIONE:
 -tipo 1, piantana per porta (lato serratura)
 -tipo 2, piantana per porta (lato cerniere)
 -tipo 3, piantana di linea con foro (*) per collegamento rete di terra
 (1) I fori per il fissaggio della cerniera, vanno eseguiti in cantiere
 I bulloni di fissaggio delle staffe sono gli stessi previsti per il fissaggio dei pannelli
 I dadi di fissaggio per la piastra d'angolo devono essere saldati a punti dopo il montaggio e il serraggio

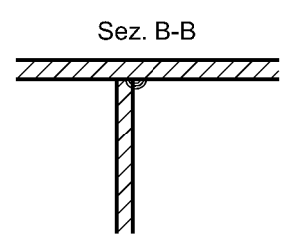
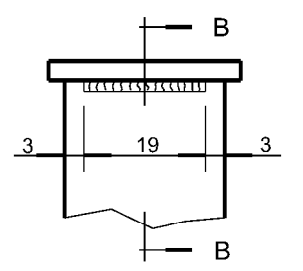
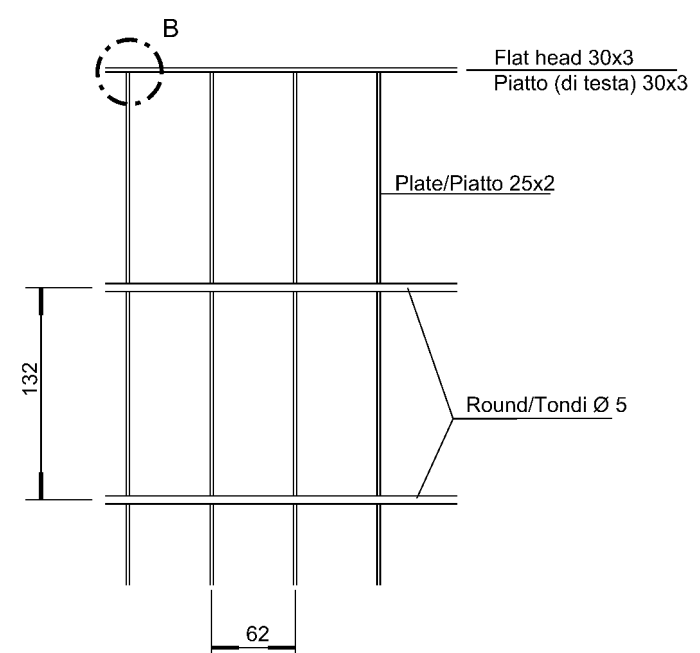


4	28/08/2019	AFD-APPROVED FOR DESIGN	D BARUCCA	G AIUDI	A PATERNIANI
3	22/08/2019	IFA-ISSUE FOR APPROVAL	D BARUCCA	G AIUDI	A PATERNIANI
2	19/07/2019	REVISED ACCORDING TO THE RECEIVED COMMENTS IFC-ISSUE FOR COMMENTS	D BARUCCA	G AIUDI	A PATERNIANI
1	06/05/2019	ISSUE FOR COMMENTS	D BARUCCA	G AIUDI	A PATERNIANI
0	02/05/2019	ISSUE FOR INTERNAL CHECK	D BARUCCA	G AIUDI	A PATERNIANI
Rev	Date	Description	Prepared	Checked	Approved
Rev	Data	Descrizione	Preparato	Verificato	Approvato
			CONTRACT N. CT 3108/2018		JOB Commessa 171001
LOCATION/LOCALITA' MALTA & ITALY			Document No / N Documento 10-DT-D-5515		
PROJECT PROGETTO MELITA TRANSGAS PIPELINE			REVISION REVISIONE 4		
DOCUMENT TITLE TITOLO DEL DOCUMENTO TYPICAL DRAWINGS FOR PLANT FENCE PARTICOLARI COSTRUTTIVI RECINZIONE			SHEET/FG 1 OF/DI 4		
			SCALE/SCALA		

REFERENCE DOCUMENTS / DOCUMENTI DI RIFERIMENTO	N



Particular/particolare B
(Welding of the grid connection to the head plates)
(Saldatura di attacco del grigliato ai piatti di testa)



Dimension/Dimensioni in cm

NOTES

- Materials: indicated in the drawing
- Anti-corrosive protection: grill, plates, profiles, sheet metal, bolts > M10: UNI 5744 dip galvanized
- Approxit weight: 25 Kg
- On the plates are allowed the rib outwards as shown with the dashed lines onthe drawing (detail A)
- All elements of the fence are painted. The painting is of the RAL type No. 6014

NOTE

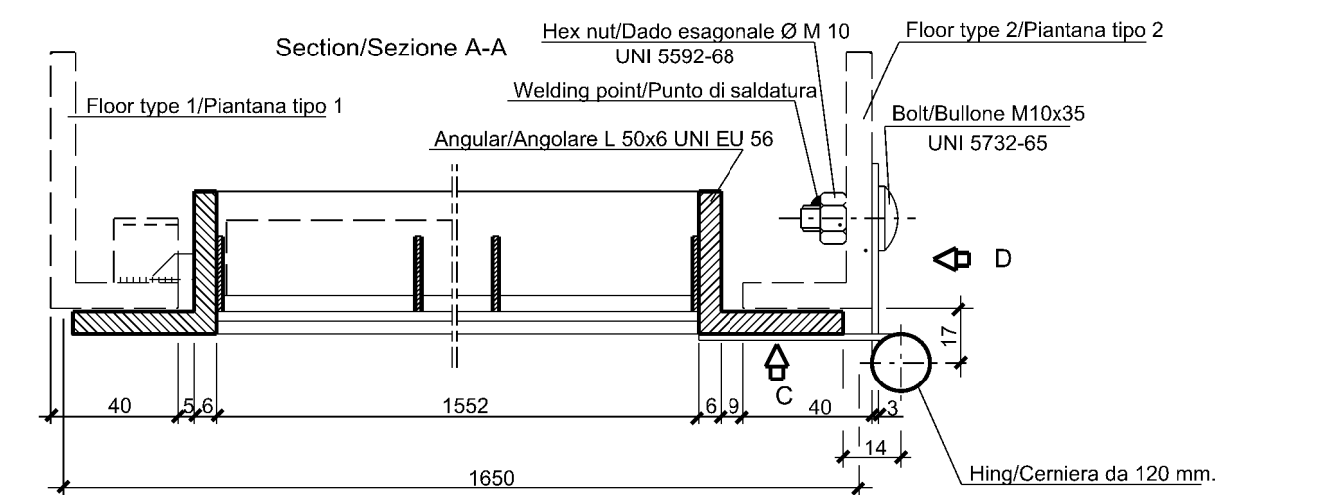
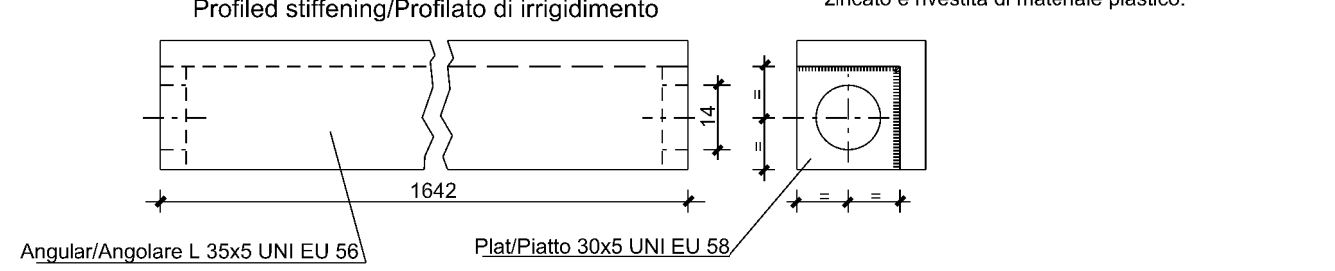
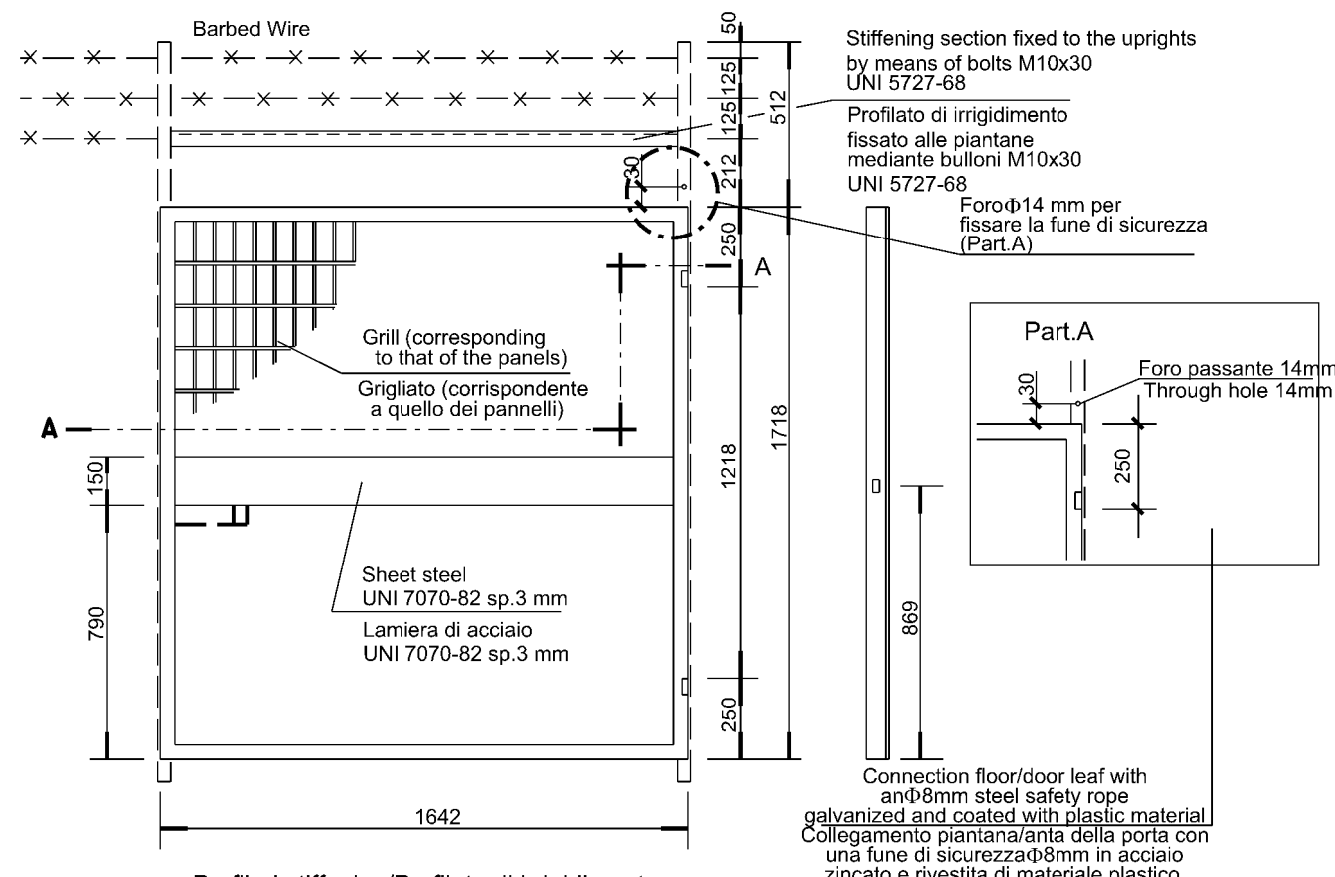
- Materiali: indicati sul disegno
- Protezione anticorrosiva: grigliato, piatti, profilati, lamiera, bulloni > M10: zincati per immersione UNI 5744
- Peso approssimativo: 25 Kg
- Sui piatti di testa e' ammessa la nervatura verso l'esterno come indicato in tratteggio sul disegno (Part. A)
- Tutti gli elementi della recinzione sono verniciati. La verniciatura è di tipo RAL n°6014

4	28/08/2019	AFD-APPROVED FOR DESIGN	D BARUCCA	G AIUDI	A PATERNIANI
3	22/08/2019	IFA-ISSUE FOR APPROVAL	D BARUCCA	G AIUDI	A PATERNIANI
2	19/07/2019	REVISED ACCORDING TO THE RECEIVED COMMENTS IFC-ISSUE FOR COMMENTS	D BARUCCA	G AIUDI	A PATERNIANI
1	06/05/2019	ISSUE FOR COMMENTS	D BARUCCA	G AIUDI	A PATERNIANI
0	02/05/2019	ISSUE FOR INTERNAL CHECK	D BARUCCA	G AIUDI	A PATERNIANI
Rev	Date	Description	Prepared	Checked	Approved
Rev	Data	Descrizione	Preparato	Verificato	Approvato

		CONTRACT N. CT 3108/2018	JOB Commessa 171001
	LOCATION/LOCALITA' MALTA & ITALY	Document No / N Documento 10-DT-D-5515	
PROJECT PROGETTO	MELITA TRANSGAS PIPELINE		REVISION REVISIONE 4
DOCUMENT TITLE TITOLO DEL DOCUMENTO	TYPICAL DRAWINGS FOR PLANT FENCE PARTICOLARI COSTRUTTIVI RECINZIONE		SHEET/FG 2 OF/DI 4
SCALE/SCALA			

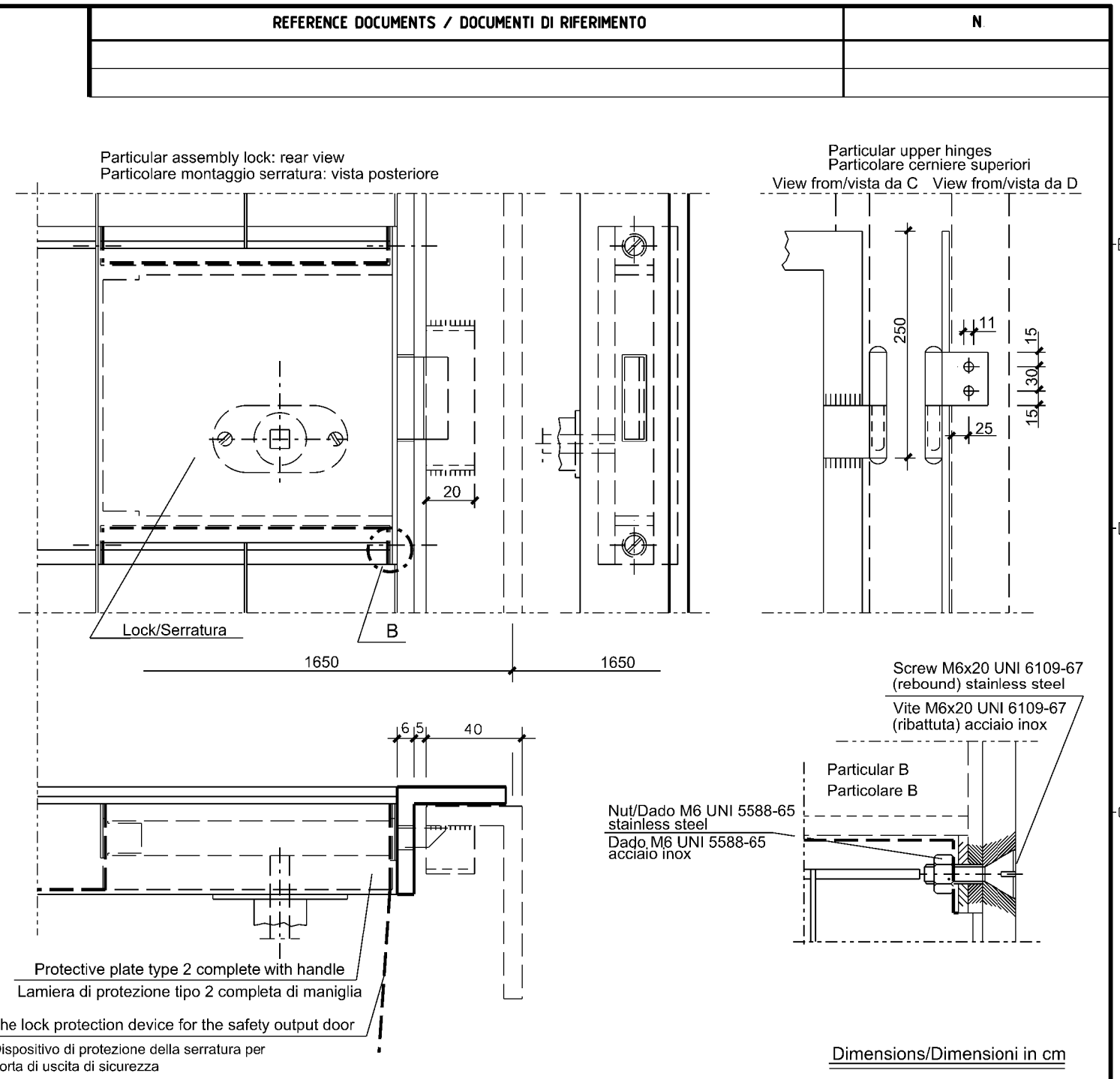
The sole responsibility of this publication lies with the author. The European Union is not responsible for any use that may be made of the information contained therein.

The sole responsibility of this publication lies with the author. The European Union is not responsible for any use that may be made of the information contained therein.



- NOTES**
- Indicated on the drawing materials
 - Corrosion protection grid, plates and bolts, dip galvanizing UNI 5744
 - Approximat weight: 50 Kg.
 - During assembly, provide for the greasing of the pins, in order to prevent any seizing
 - the 8 mm diameter safety rope must be supplied with galvanized steel cable covered with plastic material, with a length between 435-600 mm, such as guarantee easy opening and closing of the door
 - The safety rope must be fixed to the post of the door with a bolt, two washers and a self-locking nut, in galvanized steel

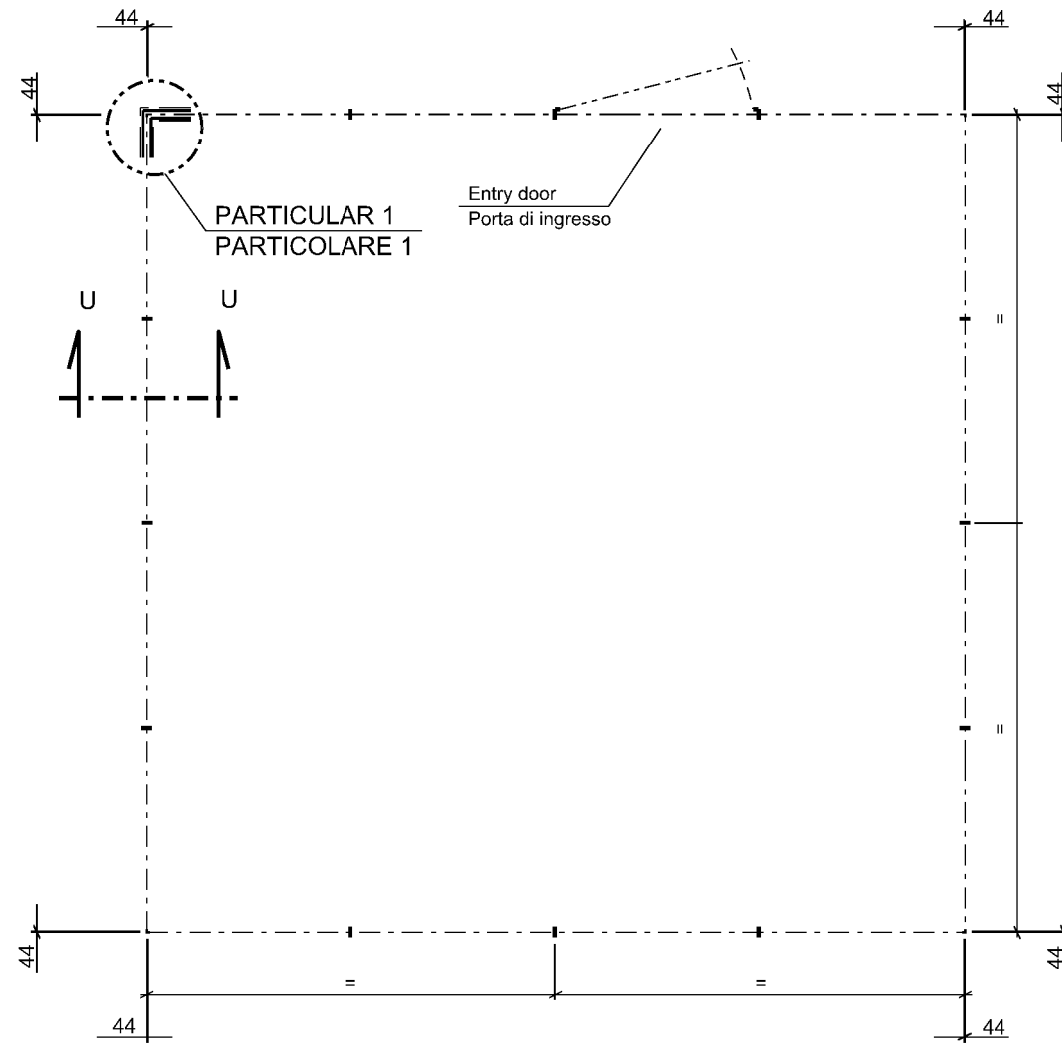
- NOTE**
- Materiali: indicati sul disegno
 - Protezione anticorrosiva: o grigliato, piatti e bulloni, zincatura per immersione UNI 5744
 - Peso approssimativo: 50 Kg.
 - In fase di assemblaggio prevedere l'ingrassaggio dei perni, in modo da prevenire eventuali grippaggi
 - la fune di sicurezza di diametro 8 mm dovra' essere fornita con cavo in acciaio zincato e rivestito in materiale plastico, con una lunghezza compresa tra 435-600 mm, tale da garantire una agevole apertura e chiusura della porta
 - La fune di sicurezza dovra' essere fissata alla piantana della porta tramite un bullone, due rondelle e un dado autobloccante, in acciaio zincato



4	28/08/2019	AFD-APPROVED FOR DESIGN	D BARUCCA	G AIUDI	A PATERNIANI
3	22/08/2019	IFA-ISSUE FOR APPROVAL	D BARUCCA	G AIUDI	A PATERNIANI
2	19/07/2019	REVISED ACCORDING TO THE RECEIVED COMMENTS IFC-ISSUE FOR COMMENTS	D BARUCCA	G AIUDI	A PATERNIANI
1	06/05/2019	ISSUE FOR COMMENTS	D BARUCCA	G AIUDI	A PATERNIANI
0	02/05/2019	ISSUE FOR INTERNAL CHECK	D BARUCCA	G AIUDI	A PATERNIANI
Rev	Date	Description	Prepared	Checked	Approved
Rev	Data	Descrizione	Preparato	Verificato	Approvato

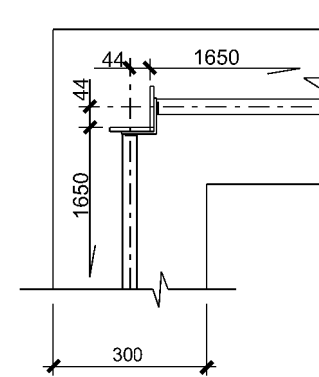
 Co-financed by the European Union Connecting Europe Facility	 LOCATION/LOCALITA' MALTA & ITALY	CONTRACT N. CT 3108/2018	JOB Commessa 171001
		Document No / N Documento 10-DT-D-5515	
PROJECT PROGETTO	MELITA TRANSGAS PIPELINE		
DOCUMENT TITLE TITOLO DEL DOCUMENTO	TYPICAL DRAWINGS FOR PLANT FENCE PARTICOLARI COSTRUTTIVI RECINZIONE		
	REVISION REVISIONE	4	
	SHEET/FG SCALE/SCALA	3 OF/DI 4	

TYPICAL PLANT/PIANTA TIPICA

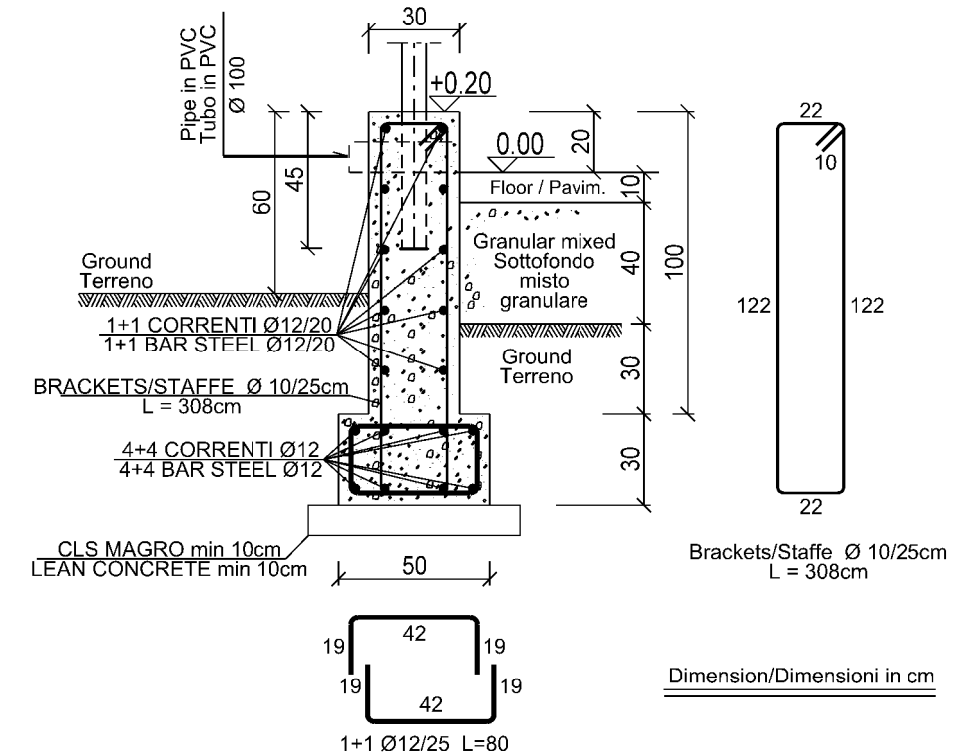


Dimension/Dimensioni in mm

Particular/Particolare 1



SECTION/SEZIONE U-U



Dimension/Dimensioni in cm

EXPOSURE CLASS/CLASSE DI ESPOSIZIONE		XC2 ordinary/ordinaria
CONCRETE/CALCESTRUZZO C25/30 UNI-EN 206:2014 UNI 11104:2016	CEMENT TYPE/CEMENTO TIPO	CEM I - 32,5 N
	LAVORABILITY/LAVORABILITA'	S4
	Rck	≥30Mpa, fck≥25MPa
BAR STEEL /ACCIAIO IN BARRE	Dmax SOIL / Dmax AGGREGATO	28 mm
	TYPE/TIPO	B450C
	f _{tk}	≥540Mpa, f _{yk} ≥450MPa
NOMINAL CONCRETE COVER/COPRIFERRO NOMINALE		40 mm
LEAN CONCRETE CALCESTRUZZO MAGRO C12/15	CEMENT TYPE/CEMENTO TIPO	CEM I - 32,5 N
	DOSAGE MIN. / DOSAGGIO MIN.	150 kg/m ³
	Rck	≥15Mpa, fck≥12MPa

NOTES

- CONTROLLING THE LENGTH OF REINFORCING RODS MUST BE MADE BY THE CONTRACTOR
- THE STEEL LENGTH CONTROL WILL BE CARRIED OUT BY THE CONTRACTOR
- THE MINIMUM DISTANCE BETWEEN THE ENCLOSED STEEL IN THE CONCRETE AND THE REINFORCEMENT MUST BE AT LEAST 5 cm
- IF IT IS RECOVERED DURING THE EXCAVATION THAT THE DEPTH OF THE FOUNDATION INTERESTS THE LAYER OF REMAINED SOIL, IT WILL BE NECESSARY TO DEEPEN THE EXCAVATION UP TO THE SUITABLE SUBSTRATE AND CARRY OUT THE FILLING WITH A MIXED STABILIZED OR WITH GRAVEL, COMPACTED LAYERS OF 30 cm.

NOTE

- LA QUOTA 0.00 CORRISPONDE ALLA QUOTA IMPIANTO
- IL CONTROLLO DELLA LUNGHEZZA DEI FERRI D' ARMATURA DOVRA' ESSERE EFFETTUATO DALL'IMPRESA APPALTATRICE
- LA DISTANZA MINIMA TRA LE PARTI METALLICHE ANNEGATE NEL CALCESTRUZZO ED I FERRI D'ARMATURA DOVRA' ESSERE ALMENO 5 cm
- QUALORA VENGA RISCOINTRATO IN FASE DI REALIZZAZIONE DELLO SCAVO CHE LA PROFONDITA' D'IMPOSTA DELLA FONDAZIONE INTERESSI LO STRATO DI TERRENO RIMAREGGIATO, SARA' NECESSARIO APPROFONDIRE LO SCAVO FINO AL SUBSTRATO IDONEO ED EFFETTUARE IL RIEMPIMENTO CON MISTO DI CAVA STABILIZZATO O CON GHIAIA, COMPATTATI A STRATI DI 30 cm.

4	28/08/2019	AFD-APPROVED FOR DESIGN	D BARUCCA	G AIUDI	A PATERNIANI	
3	22/08/2019	IFA-ISSUE FOR APPROVAL	D BARUCCA	G AIUDI	A PATERNIANI	
2	19/07/2019	REVISED ACCORDING TO THE RECEIVED COMMENTS IFC-ISSUE FOR COMMENTS	D BARUCCA	G AIUDI	A PATERNIANI	
1	06/05/2019	ISSUE FOR COMMENTS	D BARUCCA	G AIUDI	A PATERNIANI	
0	02/05/2019	ISSUE FOR INTERNAL CHECK	D BARUCCA	G AIUDI	A PATERNIANI	
Rev	Date	Description	Prepared	Checked	Approved	
Rev	Data	Descrizione	Preparato	Verificato	Approvato	
			CONTRACT N. CT 3108/2018	JOB Comessa 171001		
		LOCATION/LOCALITA' MALTA & ITALY	Document No / N Documento 10-DT-D-5515			
PROJECT PROGETTO	MELITA TRANSGAS PIPELINE				REVISION REVISIONE	4
DOCUMENT TITLE TITOLO DEL DOCUMENTO	TYPICAL DRAWINGS FOR PLANT FENCE PARTICOLARI COSTRUTTIVI RECINZIONE				SHEET/FG	4 OF/DI 4
SCALE/SCALA						

The sole responsibility of this publication lies with the author. The European Union is not responsible for any use that may be made of the information contained therein.