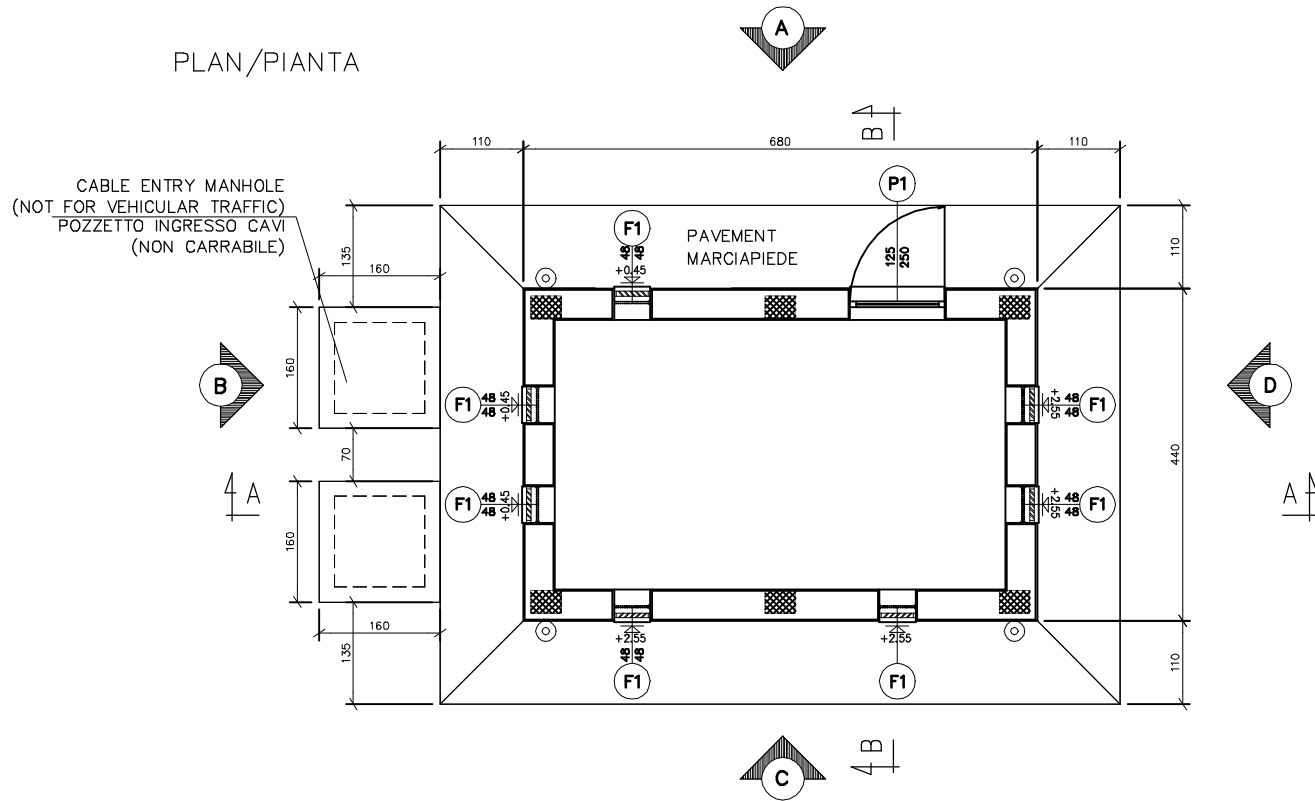


PLAN/PIANTA



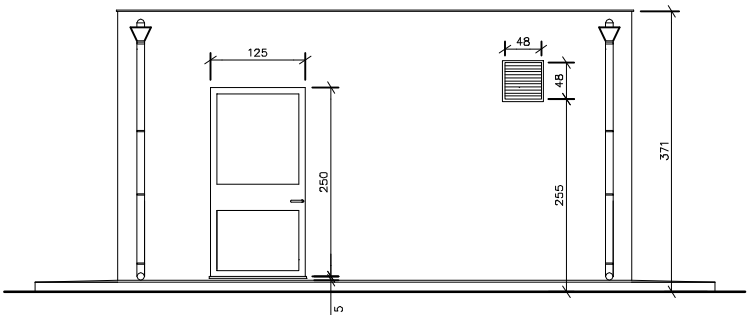
REFERENCE DOCUMENTS / DOCUMENTI DI RIFERIMENTO	N.
GENERAL LAYOUT DRAWING - ITALY BLOCK VALVE STATION 1	20-DT-D-5561
GENERAL LAYOUT DRAWING - ITALY BLOCK VALVE STATION 2	20-DT-D-5562
GENERAL LAYOUT DRAWING - ITALY BLOCK VALVE STATION 3	20-DT-D-5563

 N. 1 PIECE/PEZZO	 SANDWICH PANEL OF ALUMINUM SP. 7/10 mm PANNELLO SANDWICH DI ALLUMINIO SP. 7/10 mm	 N. 7 PIECES/PEZZI	 VENTILATION GRID IN ANODIZED ALUMINUM, JERSEY MESH ANTI-MOUSE 20x20 mm, ANTI-INSECT NET MESH 2X2 mm GRIGLIE DI AERAZIONE IN ALLUMINIO ANODIZZATO, RETE ANTITIPO MAGLIA 20x20 mm, RETE ANTINSETTI MAGLIA 2x2 mm.
	UNFIED LOCK WITH LATCH AND DOOR HANDLE SERRATURA UNIFICATA CON SCROCCO E MANIGLIA		DOORS WILL BE PROVIDED OF ANTIPANIC HANDLES

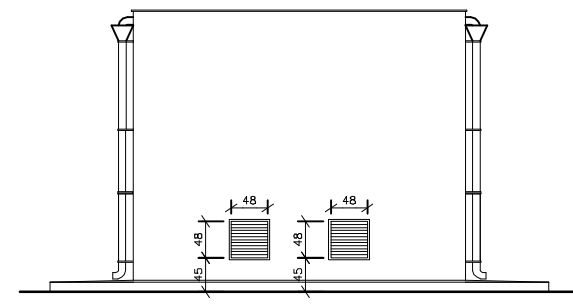
- NOTES
- 1) THE DIMENSIONS ARE INDICATED IN cm, THE ELEVATIONS IN m.
 - 2) THE QUOTE 0.00 CORRESPONDS TO THE QUOTE PLANT.
 - 3) TO FACILITATE THE FLOW OF THE RAINWATER THE OPENING THRESHOLDS WILL BE SLIGHTLY INCLINED TOWARDS THE OUTSIDE.
 - 4) THE COLOR OF THE EXTERNAL WALLS WILL BE ADAPTED IN ACCORDANCE WITH THE LOCAL LANDSCAPE REQUIREMENTS.
 - 5) THE MANHOLE CAN BE POSITIONED ALONG THE PERIMETER OF THE BUILDING SECOND THE NEED OF THE ELECTRO-INSTRUMENTAL DESIGN, IN THE POSITION INDICATED IN THE STRUCTURAL PROJECT COMPARED TO THE CORNER PILLARS.
 - 6) THE WALLS OF THE BUILDINGS WILL BE CHARACTERIZED WITH A FIRE RESISTANCE NOT LOWER THAN 2 HOURS (REI 120).
 - 7) DOORS AND WINDOWS ACCORDING TO NFPA 80 AND THEY WILL BE PROVIDED WITH A FIRE RESISTANCE NOT LOWER THAN 2 HOURS (REI 120).
 - 8) ACCORDING TO DOC 'ACTIVE FIRE PROTECTION PHILOSOPHY' N. 171001-10-RS-E-2003, THE BUILDING IS EQUIPPED WITH CO₂ EXTINGUISHERS.
 - 9) ALL UNDERGROUND CONCRETE SURFACES WILL BE PROVIDED WITH A WATER PROOF LAYER UP TO THE TOP OF THE FIRST BRICK ABOVE THE GROUND LEVEL.
 - 10) APERTURES HAVE TO BE IN WHITE COLOUR.
 - 11) ALL FIREDOORS WILL BE PROVIDED OF ANTIPANIC HANDLES AND DOOR CLOSERS (BS EN 1154).

- NOTE
- 1) LE DIMENSIONI SONO INDICATE IN cm, LE ELEVAZIONI IN m.
 - 2) LA QUOTA 0.00 CORRISPONDE ALLA QUOTA IMPIANTO.
 - 3) PER AGEVOLARE IL FLUSSO DELL'ACQUA PIOVANA LE SOGLIE DELLE APERTURE SARANNO LEGGERMENTE INCLINATE VERSO L'ESTERNO.
 - 4) IL COLORE DELLE PARETI ESTERNE POTRA' ESSERE ADEGUATA IN FUNZIONE DEI REQUISITI PAESAGGISTICO LOCALI.
 - 5) I POZZETTI POSSONO ESSERE POSIZIONATI LUNGO IL PERIMETRO DELL'EDIFICIO SECONDO LE ESIGENZE DELLA PROGETTAZIONE ELETTO-STRUMENTALE, NELLE POSIZIONI INDICATE NELL'ELABORATO GRAFICO STRUTTURALE RISPETTO AI PILASTRI D'ANGOLO.
 - 6) I FABBRICATI DEVONO ESSERE PROVISTI DI PARETI CON RESISTENZA AL FUOCO NON INFERIORE A 2 ORE (REI 120).
 - 7) PORTE E FINESTRE IN ACCORDO A NFPA 80 E RESISTENTI AL FUOCO PER NON MENO DI 2 ORE (REI 120).
 - 8) IN ACCORDO AL DOC 'ACTIVE FIRE PROTECTION PHILOSOPHY' N. 171001-10-RS-E-2003, IL FABBRICATO E' DOTATO DI ESTINTORI A BASE DI CO₂.
 - 9) TUTTE LE SUPERFICI INTERRATE IN CALCESTRUZZO SARANNO PROVviste DI UNO STRATO IMPERMEABILE FIN SOPRA AL PRIMO MATTONE FUORI TERRA.
 - 10) TUTTE LE APERTURE DEVONO ESSERE DI COLORE BIANCO.
 - 11) TUTTE LE PORTE TAGLIAFUOCO SARANNO DOTATE DI MANIGLIA ANTIPANICO E CHIUDIPIRTE (BS EN 1154).

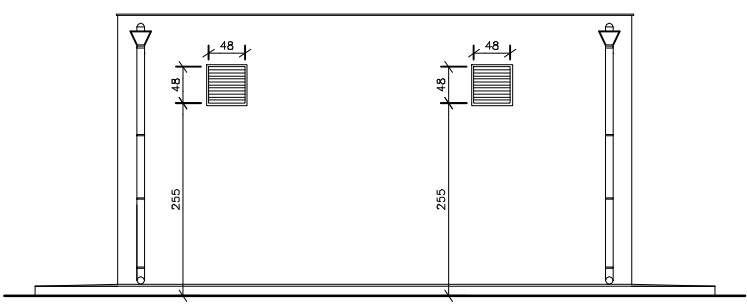
VIEW "A"
PROSPETTO "A"



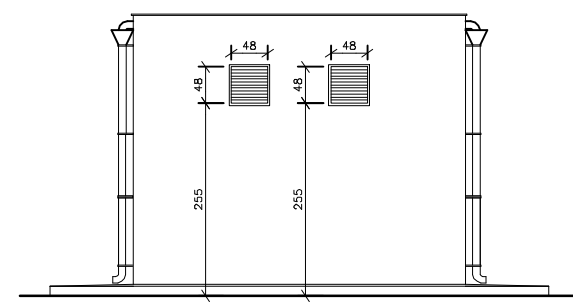
VIEW "B"
PROSPETTO "B"



VIEW "C"
PROSPETTO "C"



VIEW "D"
PROSPETTO "D"



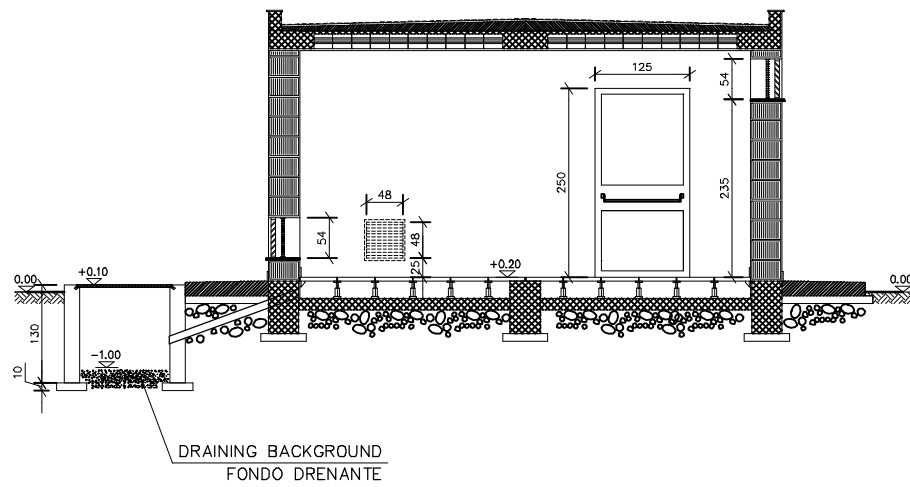
Rev.	Date	Description	Prepared	Checked	Approved
Rev.	Data	Descrizione	Preparato	Verificato	Approvato
4	28/08/2019	AFD-APPROVED FOR DESIGN	L.GENNARI	F.MUZZI'	A.PATERNIANI
3	22/08/2019	UPDATED ACCORDING TO THE RECEIVED NOTES - ISSUE FOR APPROVAL	L.GENNARI	F.MUZZI'	A.PATERNIANI
2	19/07/2019	GENERAL REVISION - ISSUE FOR COMMENTS	L.GENNARI	F.MUZZI'	A.PATERNIANI
1	06/05/2019	ISSUE FOR COMMENTS	D.BARUCCA	G.AIUDI	A.PATERNIANI
0	02/05/2019	ISSUE FOR INTERNAL CHECK	D.BARUCCA	G.AIUDI	A.PATERNIANI

 MINISTRY FOR ENERGY AND WATER MANAGEMENT WSC, QORMI ROAD, LIJQA, MALTA	 LOCATION/LOCALITA' MALTA & ITALY	CONTRACT N. CT 3108/2018	JOB Commessa 171001
		Document No. / N. Documento 10-DT-D-5518	
PROJECT PROGETTO	MELITA TRANSGAS PIPELINE	REVISION REVISIONE	4
DOCUMENT TITLE TITOLO DEL DOCUMENTO	ELETTRICA/CONTROL BUILDING FOR BLOCK VALVE STATION EDIFICIO DI CONTROLLO ELETTRICO PER PUNTO DI INTERCETTAZIONE DI LINEA	SHEET/FG.	1 OF/DI 2
		SCALE/SCALA	1:100

The sole responsibility of this publication lies with the author. The European Union is not responsible for any use that may be made of the information contained therein.

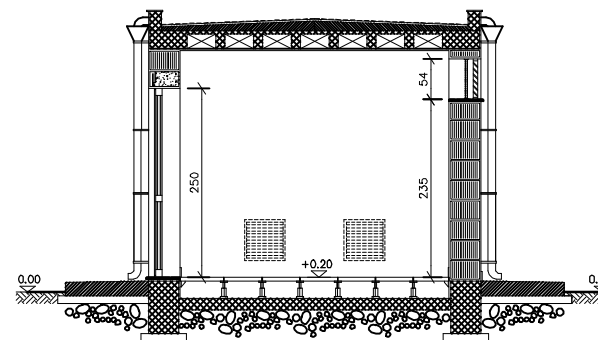
REFERENCE DOCUMENTS / DOCUMENTI DI RIFERIMENTO	N.
GENERAL LAYOUT DRAWING - ITALY BLOCK VALVE STATION 1	20-DT-D-5561
GENERAL LAYOUT DRAWING - ITALY BLOCK VALVE STATION 2	20-DT-D-5562
GENERAL LAYOUT DRAWING - ITALY BLOCK VALVE STATION 3	20-DT-D-5563

SECTION A-A / SEZIONE A-A



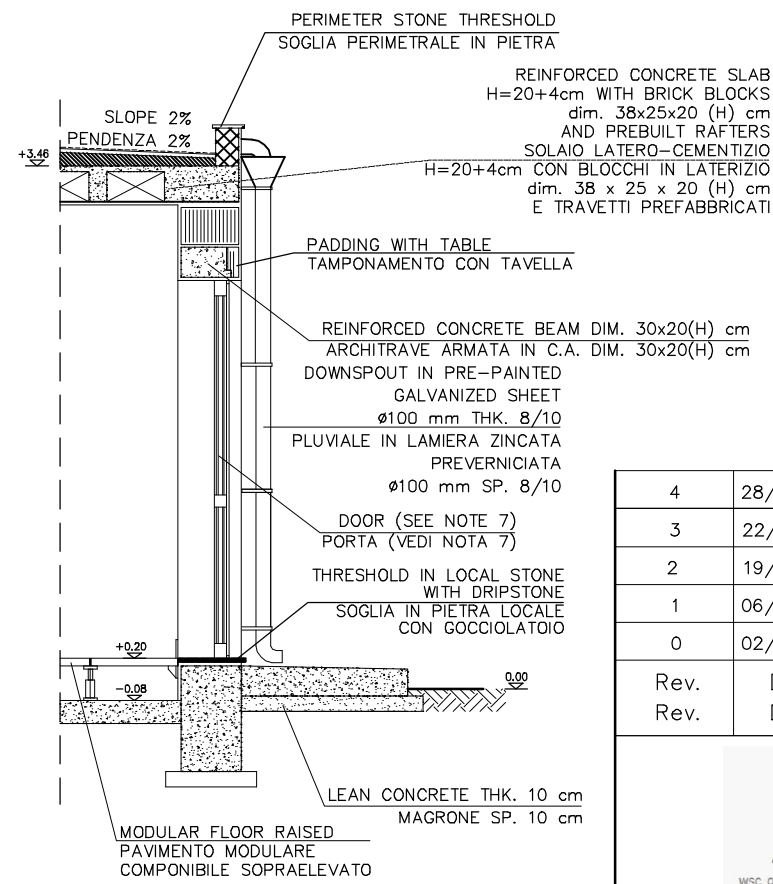
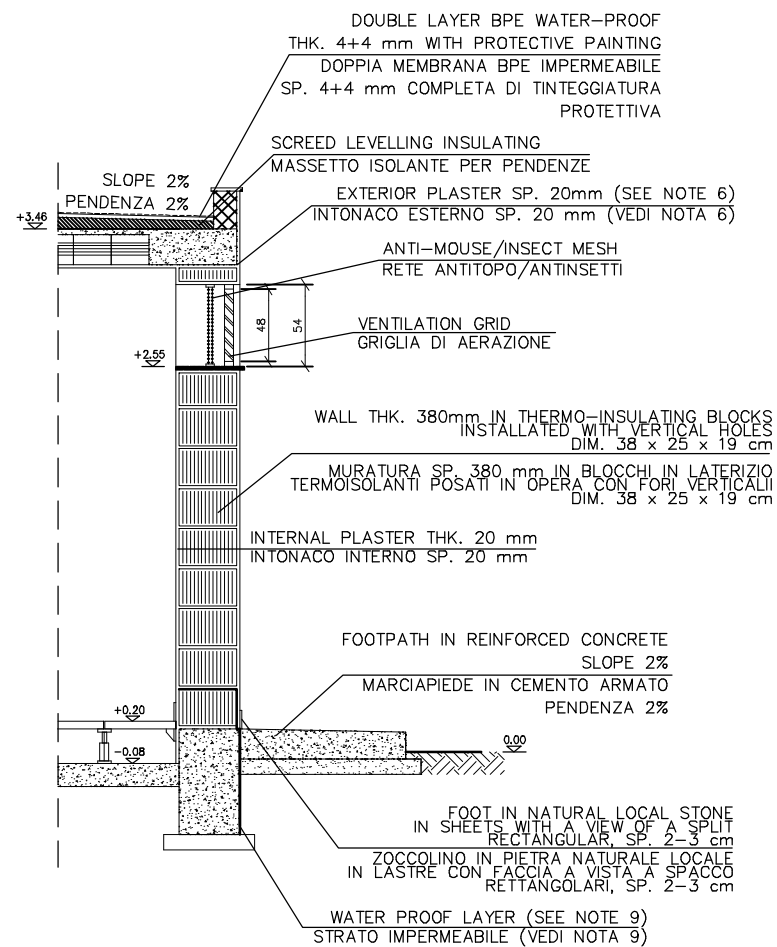
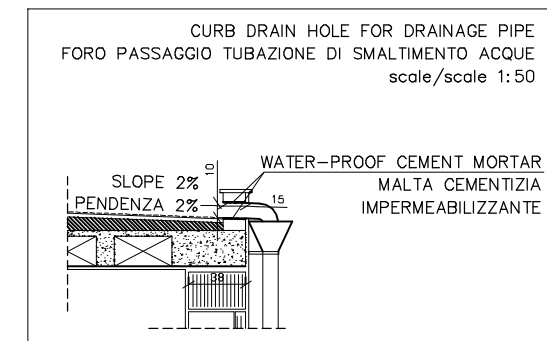
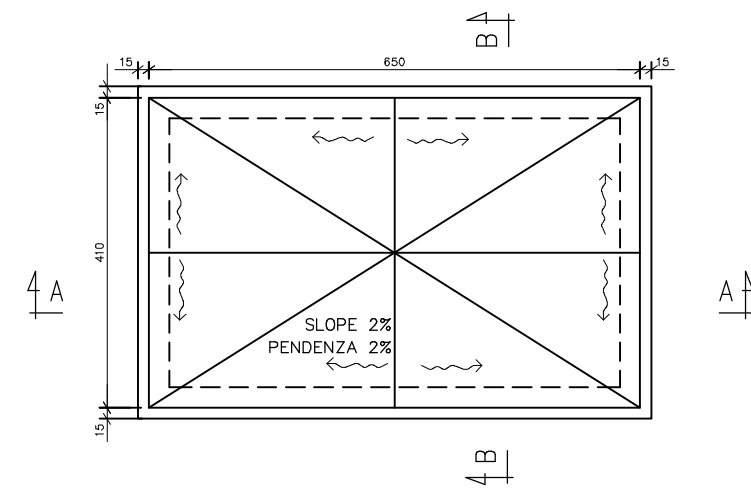
DETAIL "A"
PARTICOLARE "A"
scale/scala 1:50

SECTION B-B / SEZIONE B-B



DETAIL "B"
PARTICOLARE "B"
scale/scala 1:50

PLANT COVER/PIANTA COPERTURA



Rev.	Date	Description	Prepared	Checked	Approved
4	28/08/2019	AFD-APPROVED FOR DESIGN	L.GENNARI	F.MUZZI'	A.PATERNIANI
3	22/08/2019	UPDATED ACCORDING TO THE RECEIVED NOTES - ISSUE FOR APPROVAL	L.GENNARI	F.MUZZI'	A.PATERNIANI
2	19/07/2019	GENERAL REVISION - ISSUE FOR COMMENTS	L.GENNARI	F.MUZZI'	A.PATERNIANI
1	06/05/2019	ISSUE FOR COMMENTS	D.BARUCCA	G.AIUDI	A.PATERNIANI
0	02/05/2019	ISSUE FOR INTERNAL CHECK	D.BARUCCA	G.AIUDI	A.PATERNIANI

Rev.	Date	Description	Prepared	Checked	Approved
4	28/08/2019	AFD-APPROVED FOR DESIGN	L.GENNARI	F.MUZZI'	A.PATERNIANI
3	22/08/2019	UPDATED ACCORDING TO THE RECEIVED NOTES - ISSUE FOR APPROVAL	L.GENNARI	F.MUZZI'	A.PATERNIANI
2	19/07/2019	GENERAL REVISION - ISSUE FOR COMMENTS	L.GENNARI	F.MUZZI'	A.PATERNIANI
1	06/05/2019	ISSUE FOR COMMENTS	D.BARUCCA	G.AIUDI	A.PATERNIANI
0	02/05/2019	ISSUE FOR INTERNAL CHECK	D.BARUCCA	G.AIUDI	A.PATERNIANI

		CONTRACT N.	JOB
		CT 3108/2018	Commessa 171001

	LOCATION/LOCALITA' MALTA & ITALY	Document No. / N. Documento
		10-DT-D-5518

PROJECT	MELITA TRANSGAS PIPELINE	REVISION	4
PROGETTO		REVISIONE	

DOCUMENT TITLE	ELECTRICA/CONTROL BUILDING FOR BLOCK VALVE STATION	SHEET/FG.	2 OF/DI 2
TITOLO DEL DOCUMENTO		SCALE/SCALA	

The sole responsibility of this publication lies with the author. The European Union is not responsible for any use that may be made of the information contained therein.