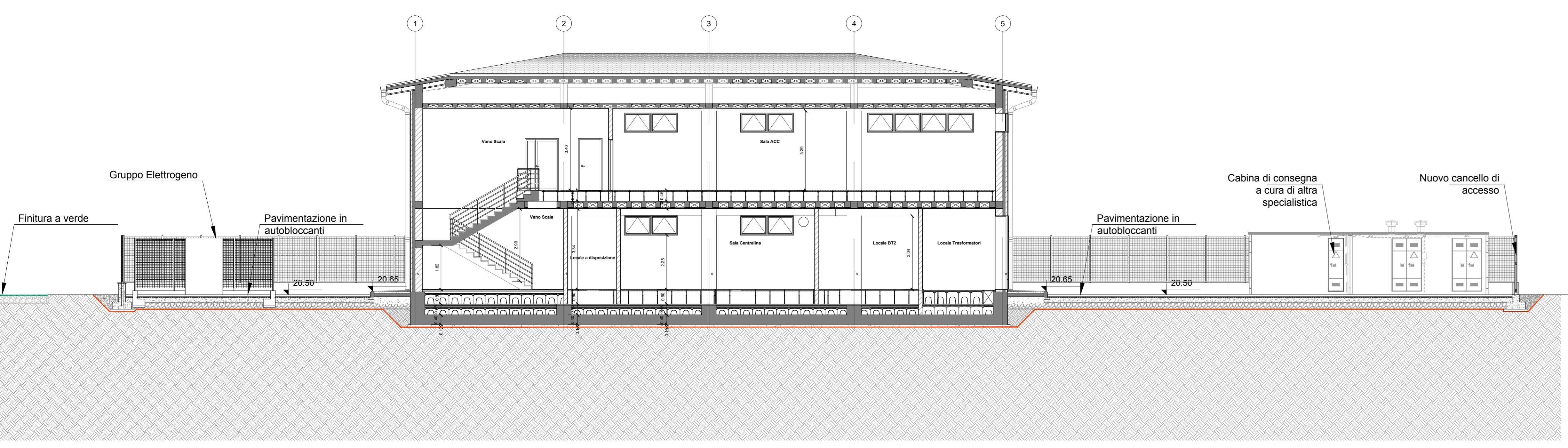
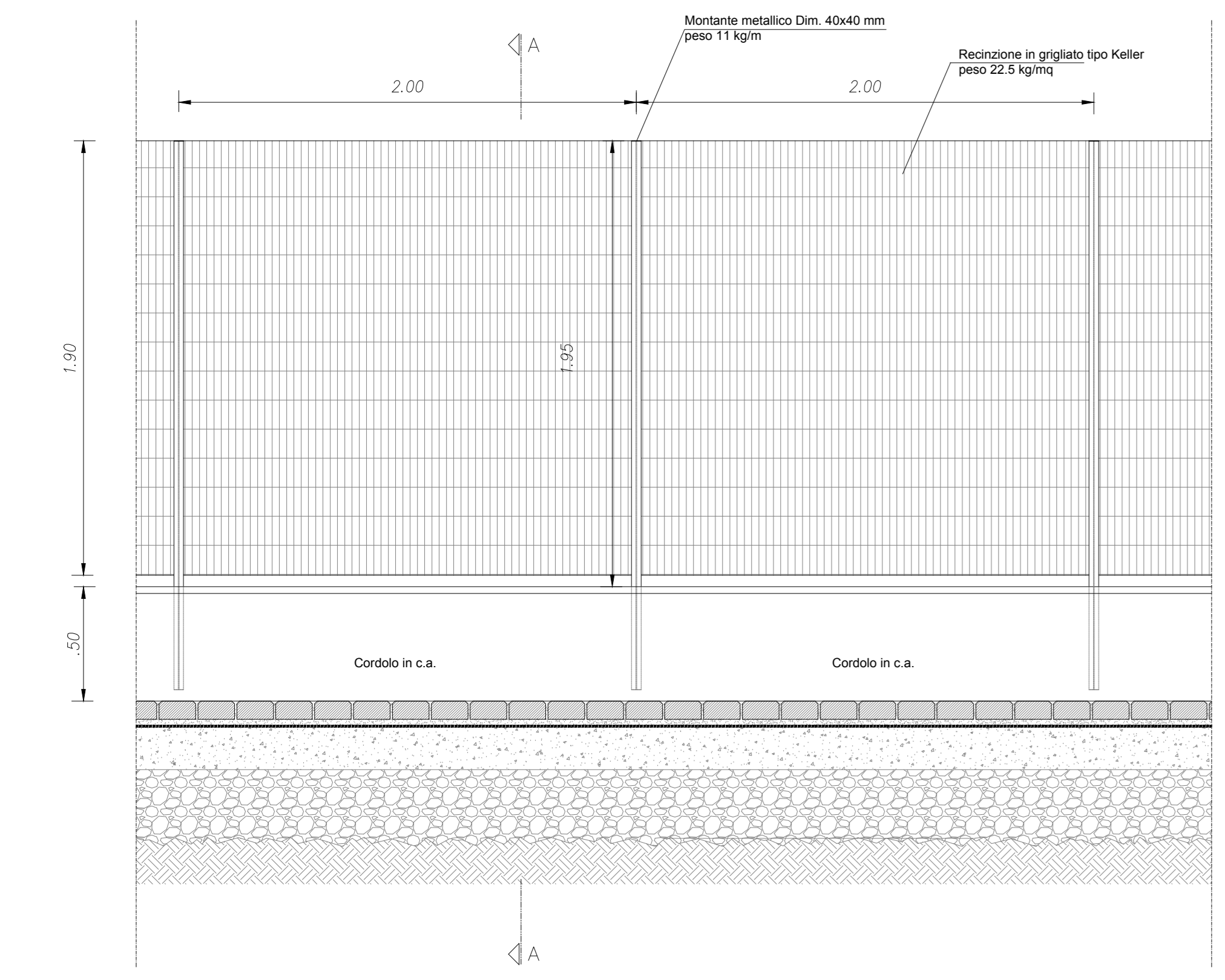
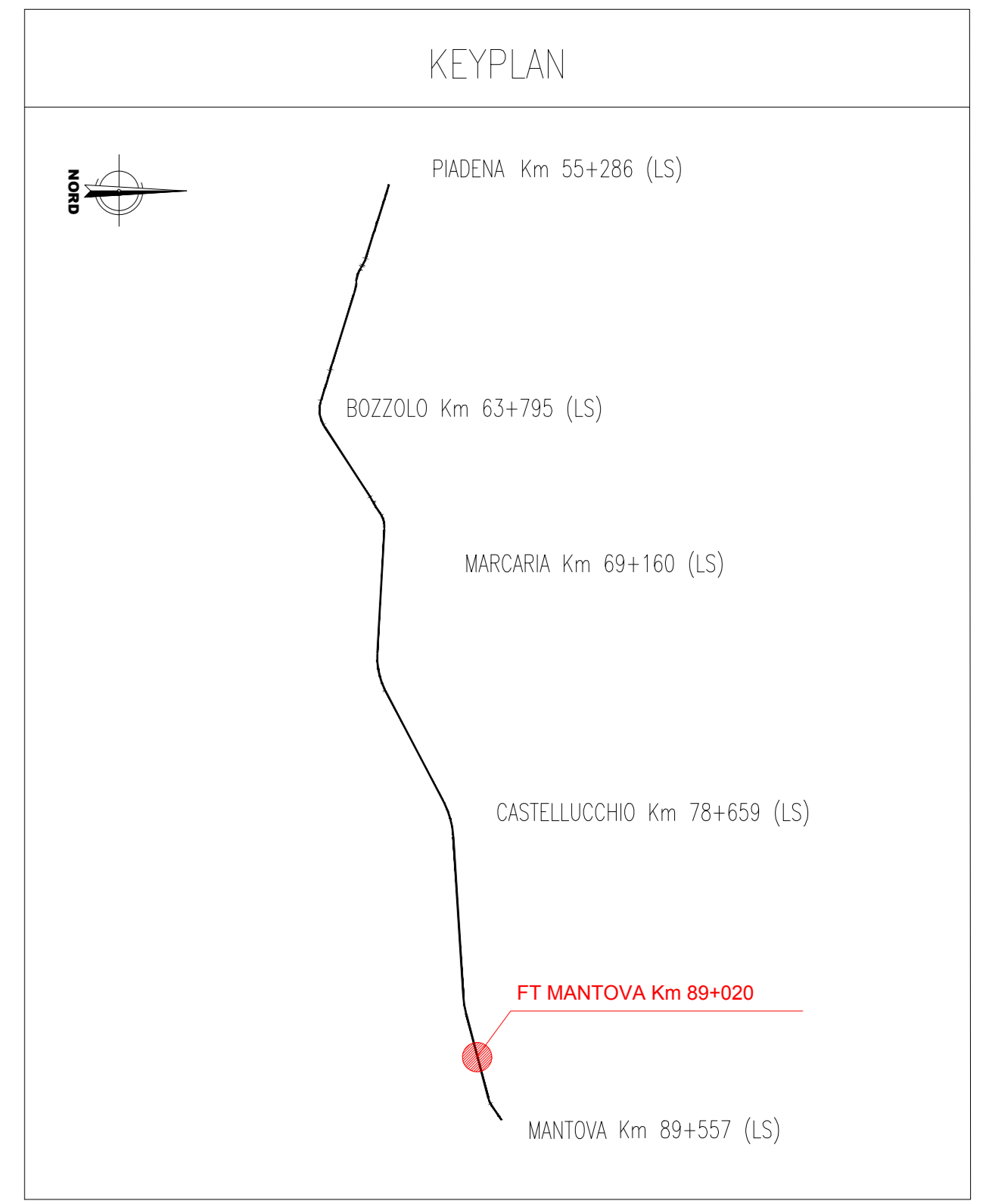
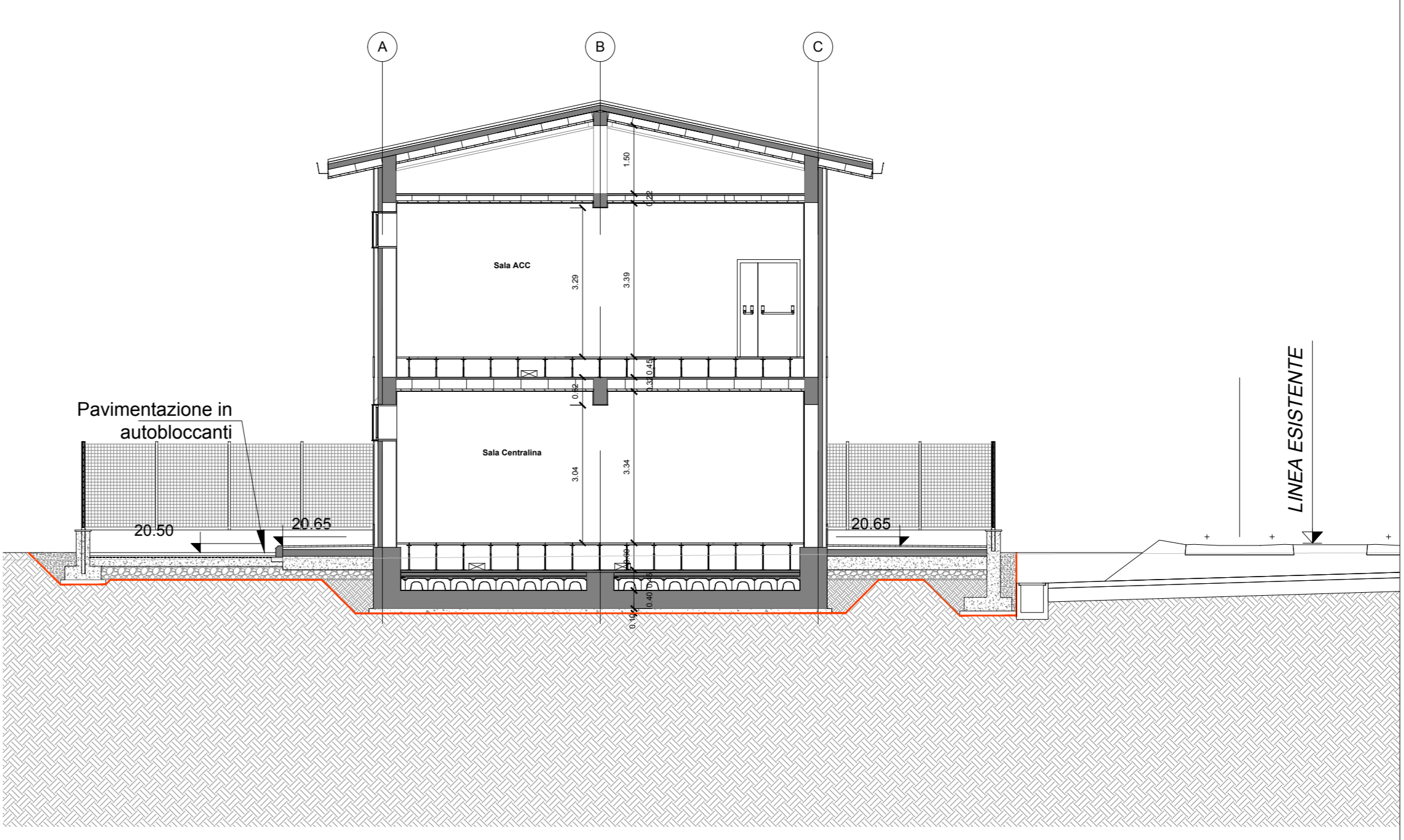


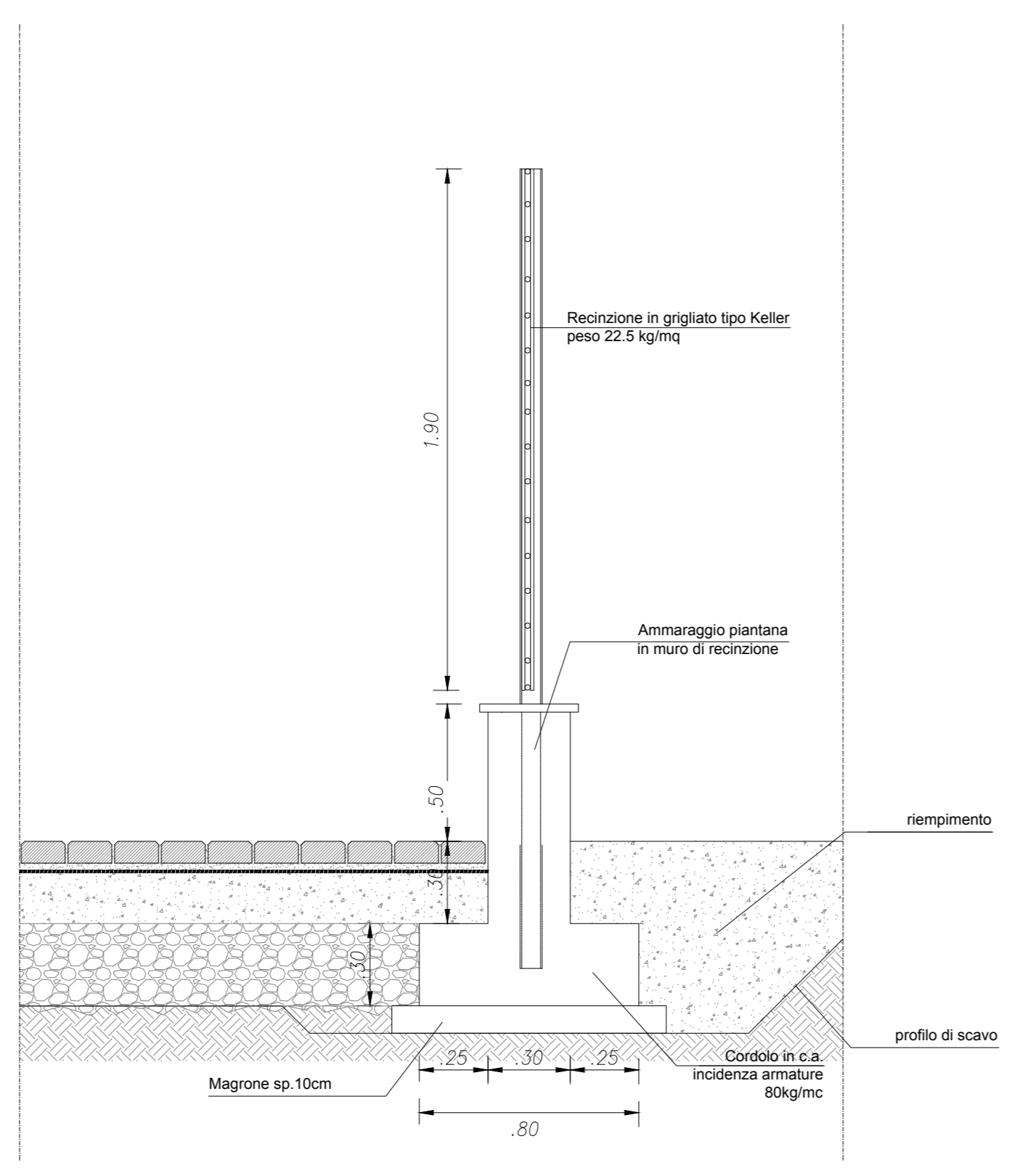
SEZIONE A-A SCALE 1:100



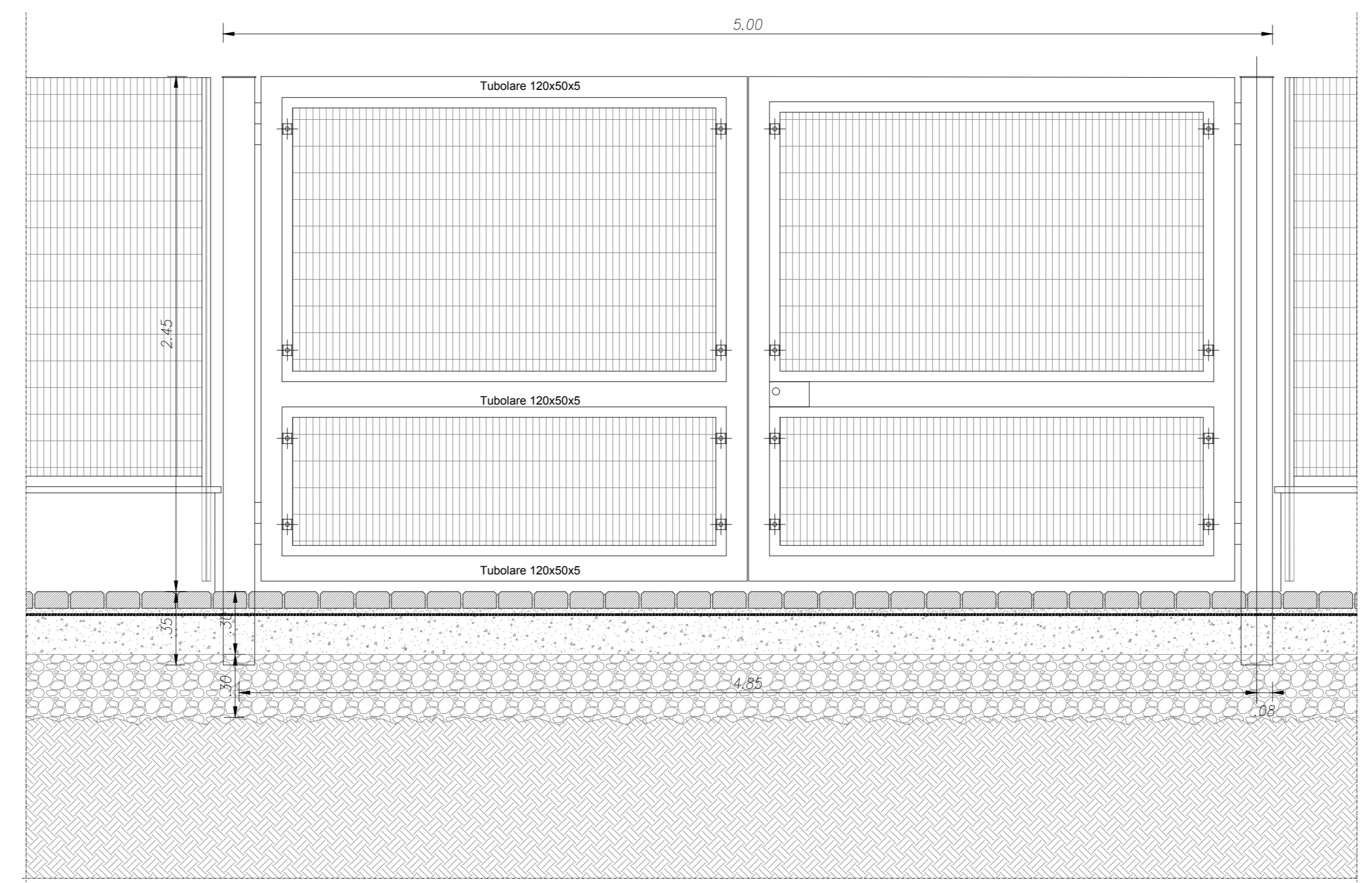
SEZIONE B-B SCALE 1:100



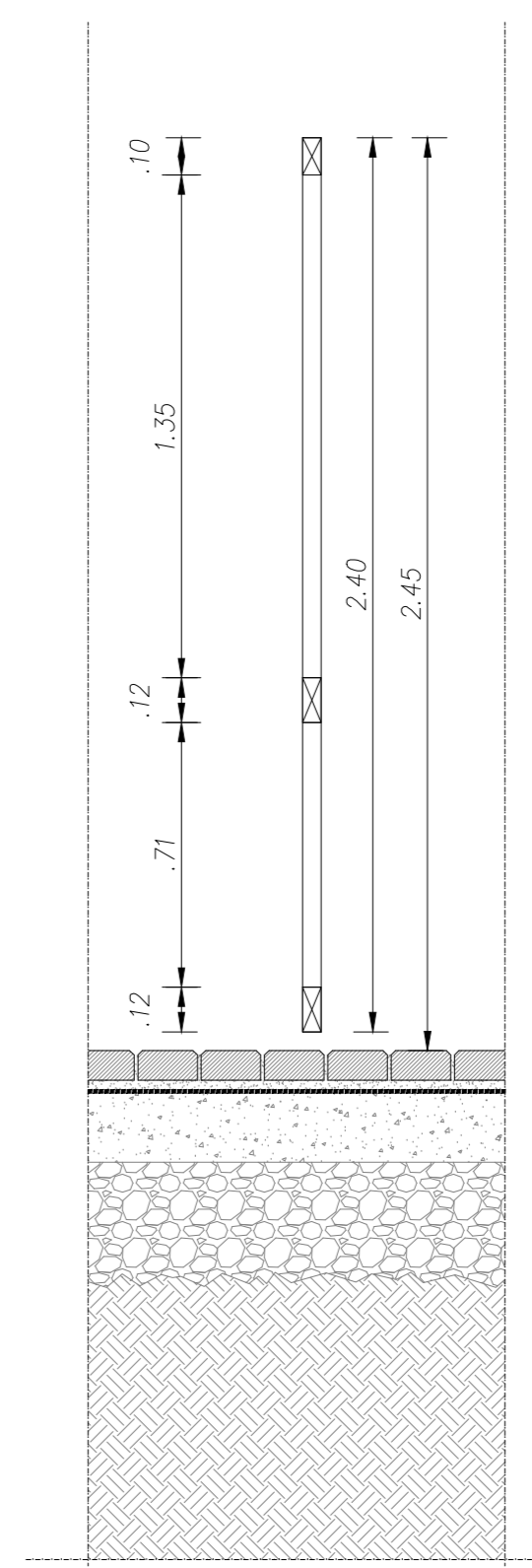
DETAILLO C - PROSPETTO Scale 1:20



DETAILLO C - SEZIONE Scale 1:20

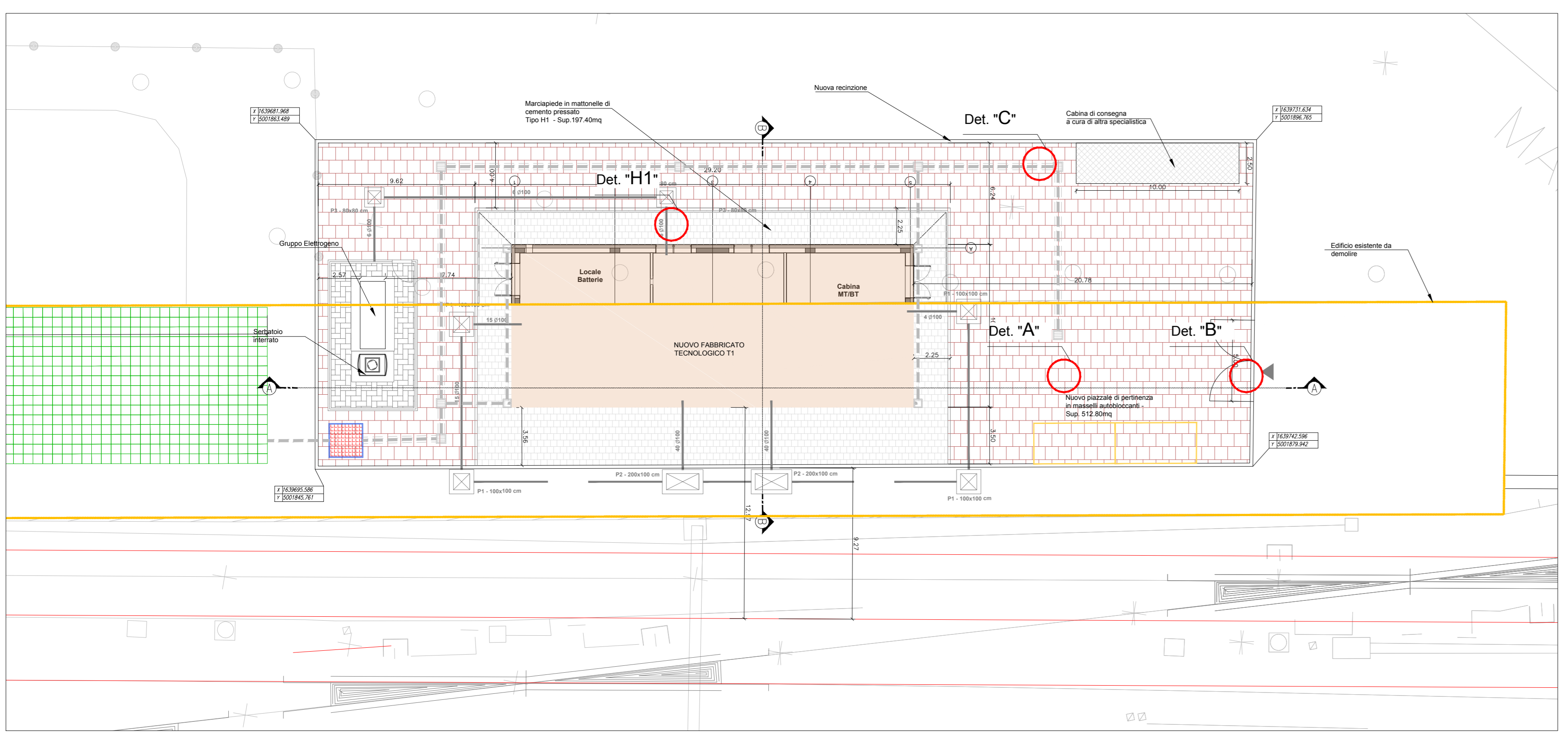


DETAILLO B - PROSPETTO Scale 1:20

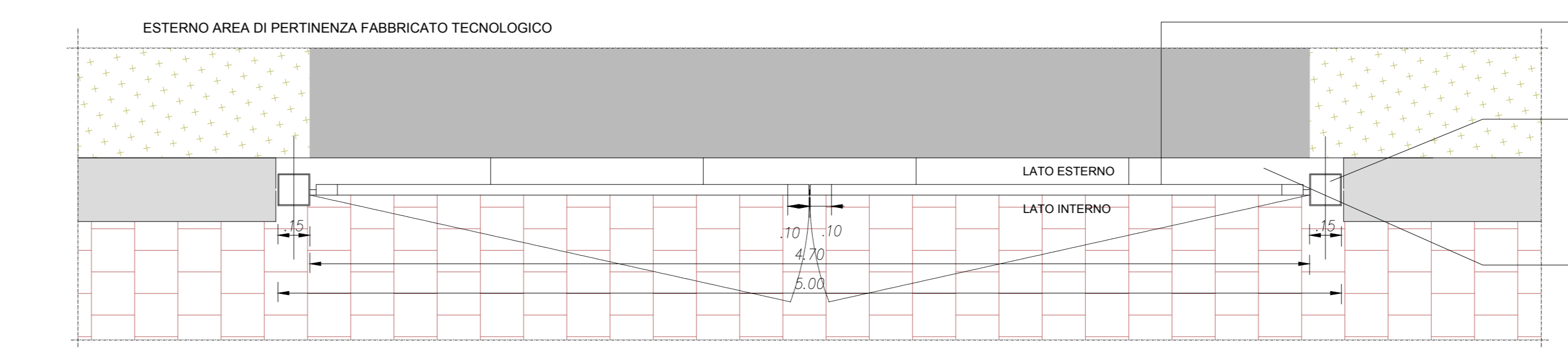


DETAILLO B - SEZIONE Scale 1:20

DETAILLO C - PROSPETTO Scale 1:20

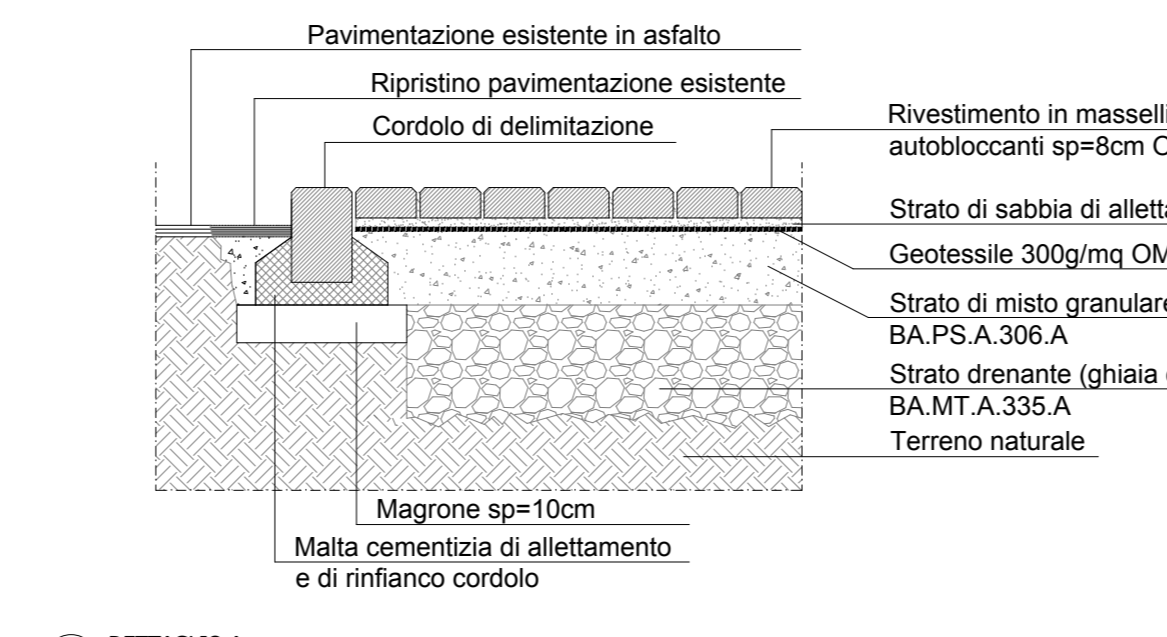


KEYPLAN



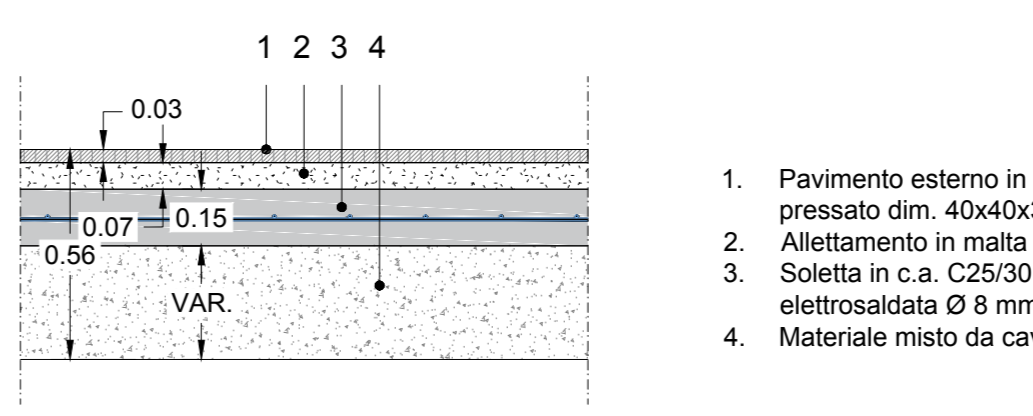
DETAILLO B - PIANTA Scale 1:20

DETAILLO "A" - Pavimentazione drenante piazzale



DETAILLO A Scale 1:30

DETAILLO "H1" - Pavimentazione esterna fabbricato/marciapiede



DETAILLO H1 Scale 1:30

1. Pavimento esterno in piastrelle di cemento pressato dim. 40x40x5,5 cm
2. Allettamento in malta cementizia
3. Soletta in c.a. C28/30 con rete elettrosaldata Ø 8 mm 20/20 cm
4. Materiale misto da cava compatto

COMMITTENTE: **RFI** RETE FERROVIARIA ITALIANA GRUPPO FERROVIE DELLO STATO ITALIANO

PROGETTAZIONE: **ITALFERR** GRUPPO FERROVIE DELLO STATO ITALIANO

CUP: J84H17000930009

U.O. INFRASTRUTTURE NORD

PROGETTO DEFINITIVO

RADDOPPIO LINEA CODOGNO - CREMONA - MANTOVA TRATTA PIADENA - MANTOVA

FABBRICATO TECNOLOGICO I5 - MANTOVA (T1)
Sezioni piazzale e dettagli

SCALA: varie

Rev.	Descrizione	Redatto	Data	Verificato	Data	Approvato	Data	Autorizzato Data
A	Emissione Esecutiva	G. Cignani	Aprile 2020	M. Andreola	Aprile 2020	M. Battigelli	Aprile 2020	

File: NM250328W9FA40001A n. Elab.: