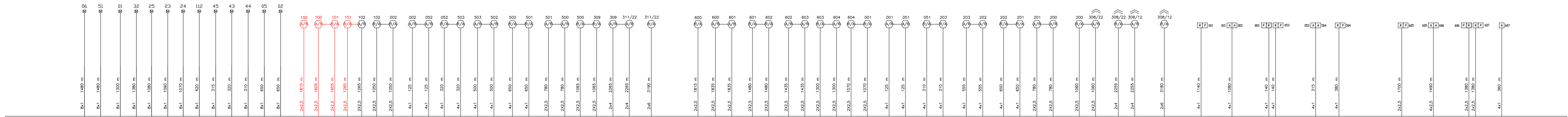
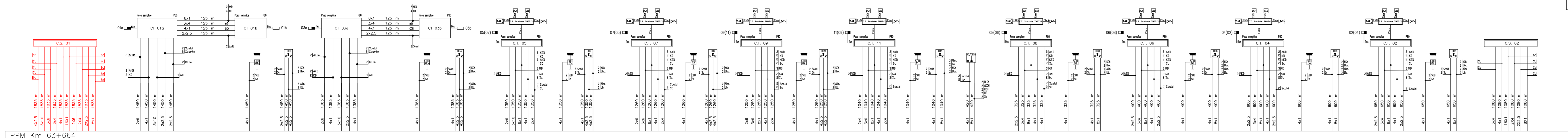


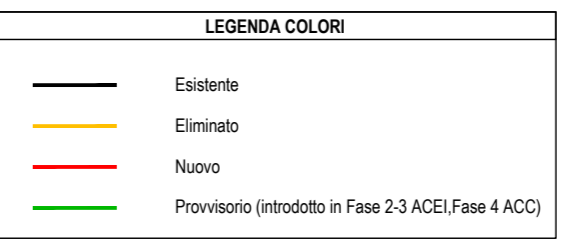
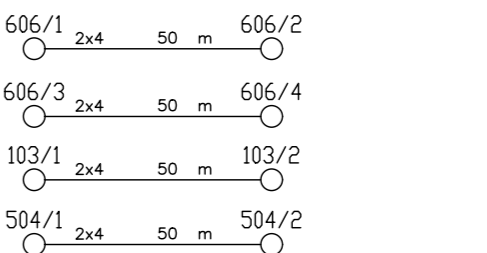
PPM Km 63+664



PPM Km 63+664



PPM Km 63+664



Per Cavi a 1000V e F.D. si rimanda agli appositi elaborati delle specialistiche LFM e TLC.

COMMITTENTE:  
  
**RFI**  
 RETE FERROVIARIA ITALIANA  
 GRUPPO FERROVIE DELLO STATO ITALIANE

PROGETTAZIONE:  
  
**ITALFERR**  
 GRUPPO FERROVIE DELLO STATO ITALIANE

CUP: J84H17000930009

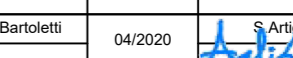
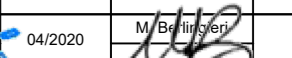
**U.O. TECNOLOGIE NORD**  
**PROGETTO DEFINITIVO**  
**RADDOPPIO LINEA CODOGNO - CREMONA - MANTOVA**  
**TRATTA PIADENA - MANTOVA**

**PPM BOZZOLO**  
 PIANO CAVI IS - FASE 5

SCALA:  
 -

COMMESSA LOTTO FASE ENTE TIPO DOC. OPERA/DISCIPLINA PROGR. REV.

NM25 03 D 58 PX AS1223 002 A

Rev.	Descrizione	Redatto	Data	Verificato	Data	Approvato	Data	Autorizzato Data
A	Emissione Esecutiva	G. Barozzi	04/2020		04/2020			M. Gambaro 04/2020



File: NM2503D58P8AS1223002A.dwg n. Elabor.: -