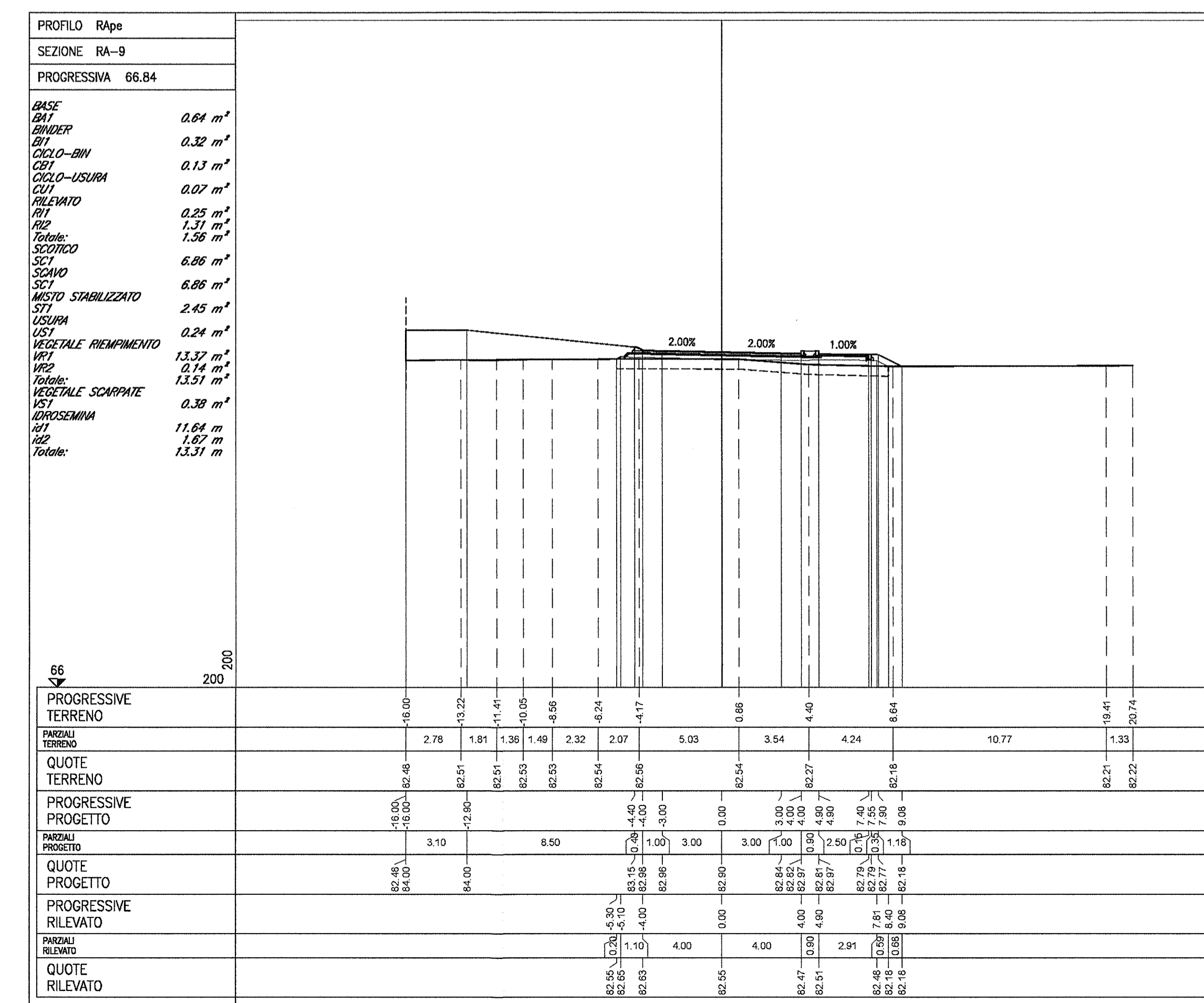
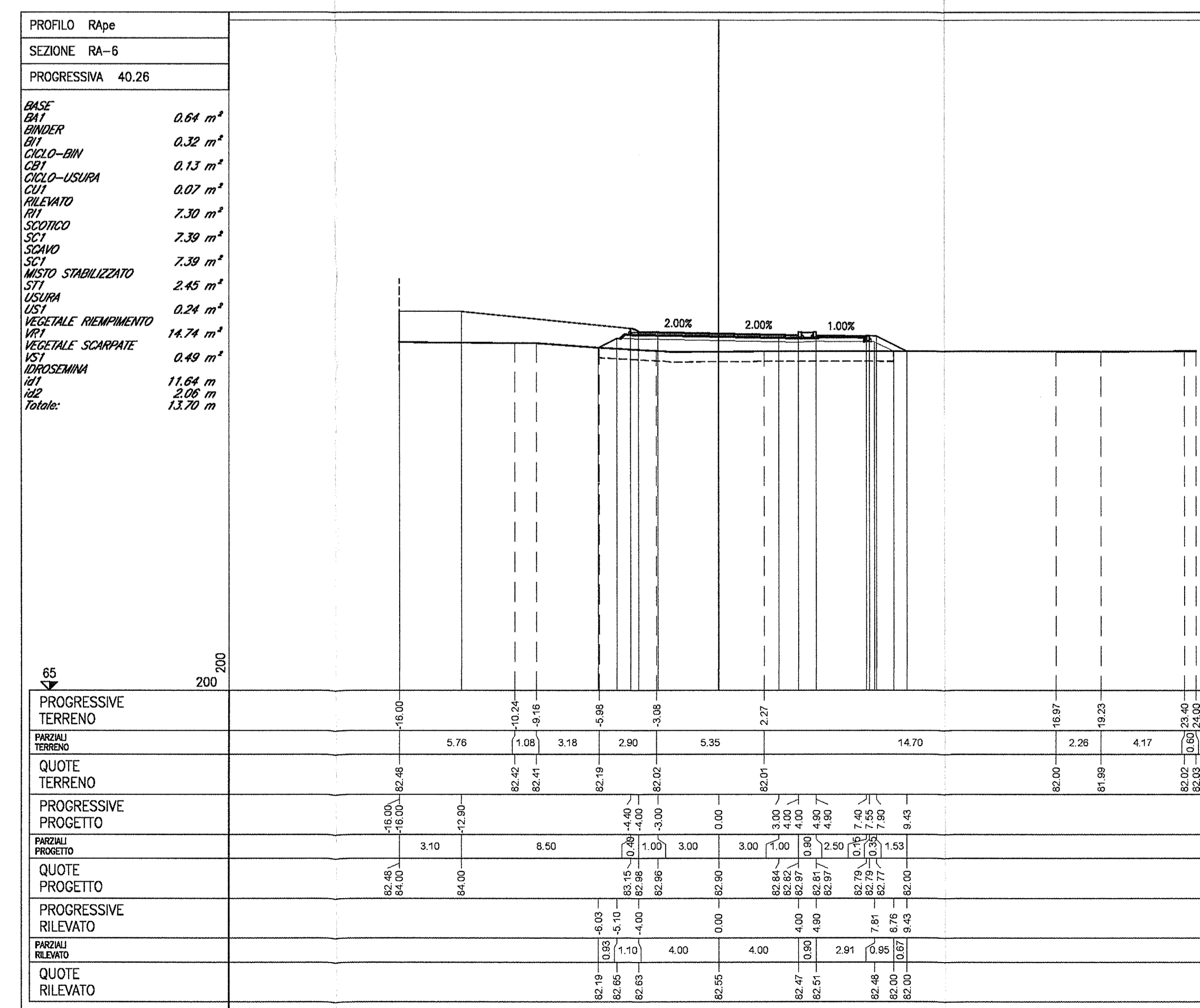
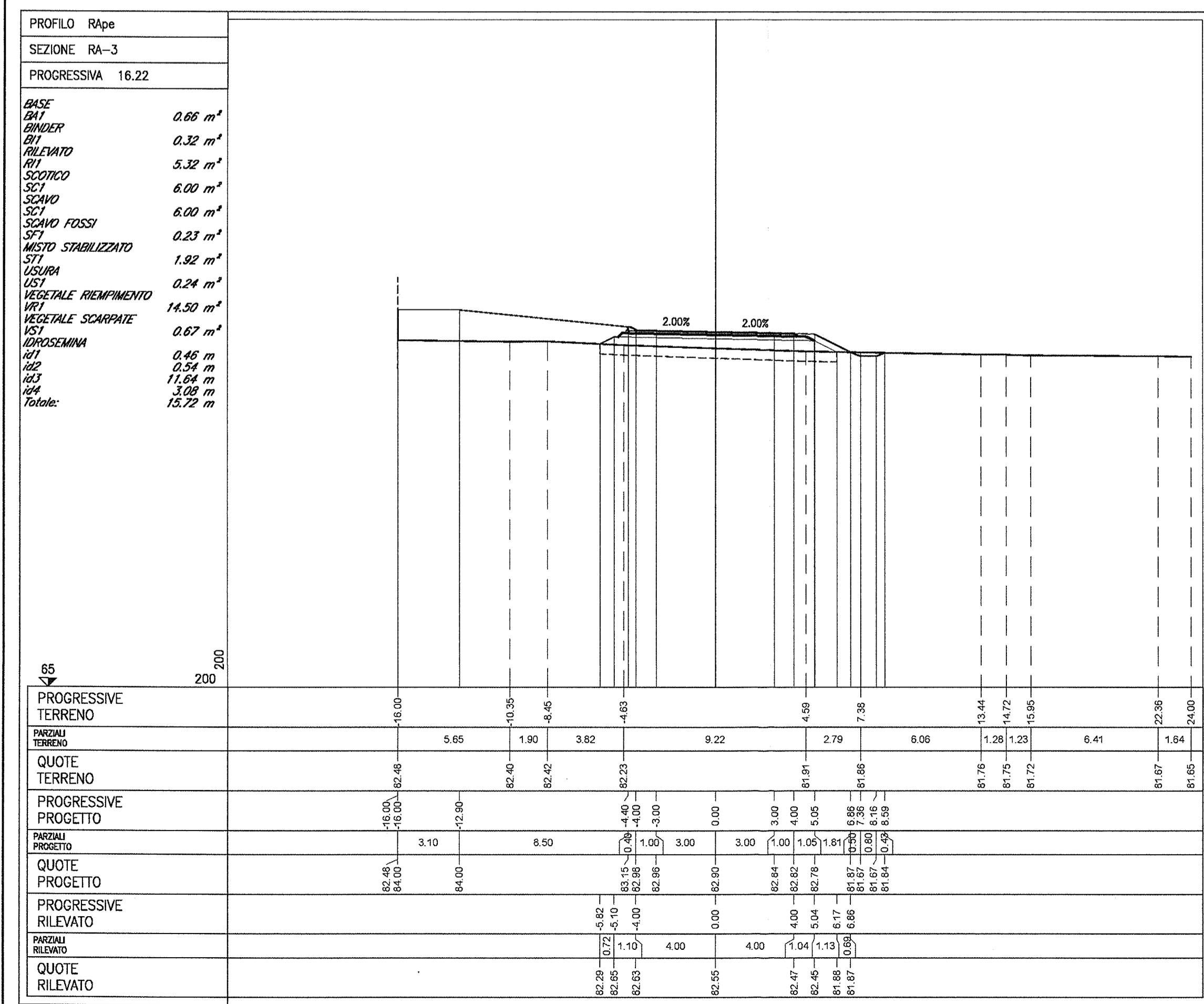
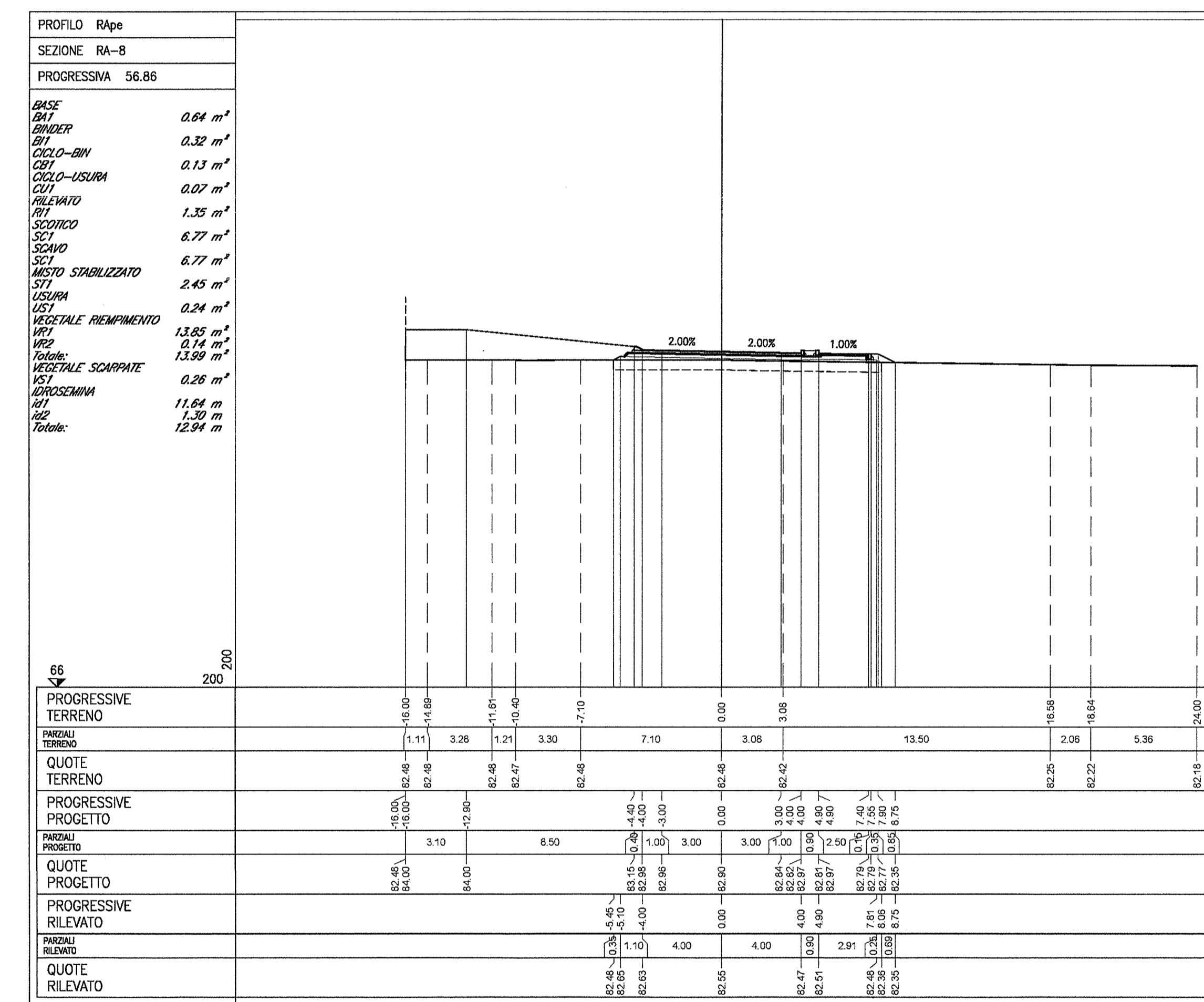
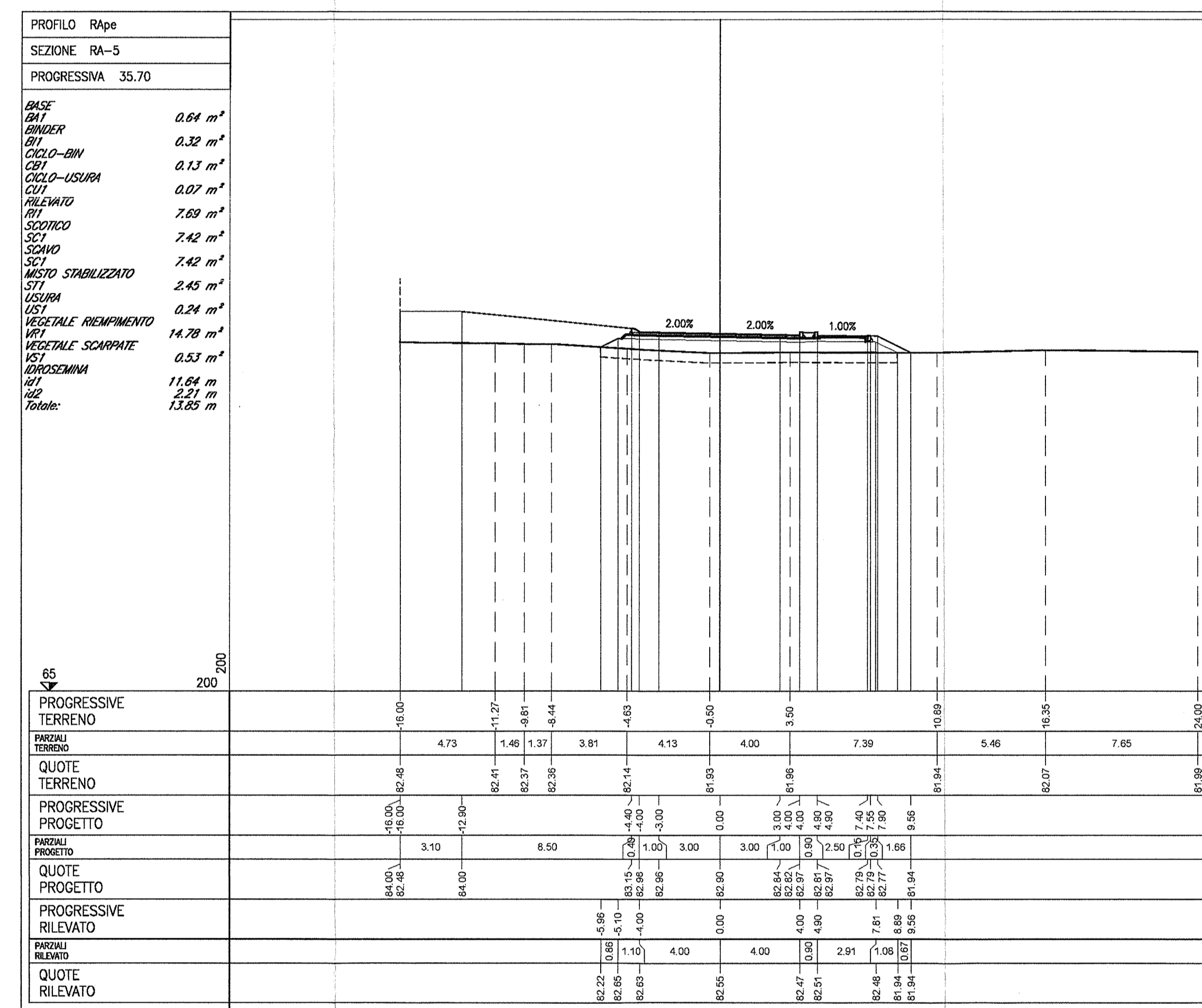
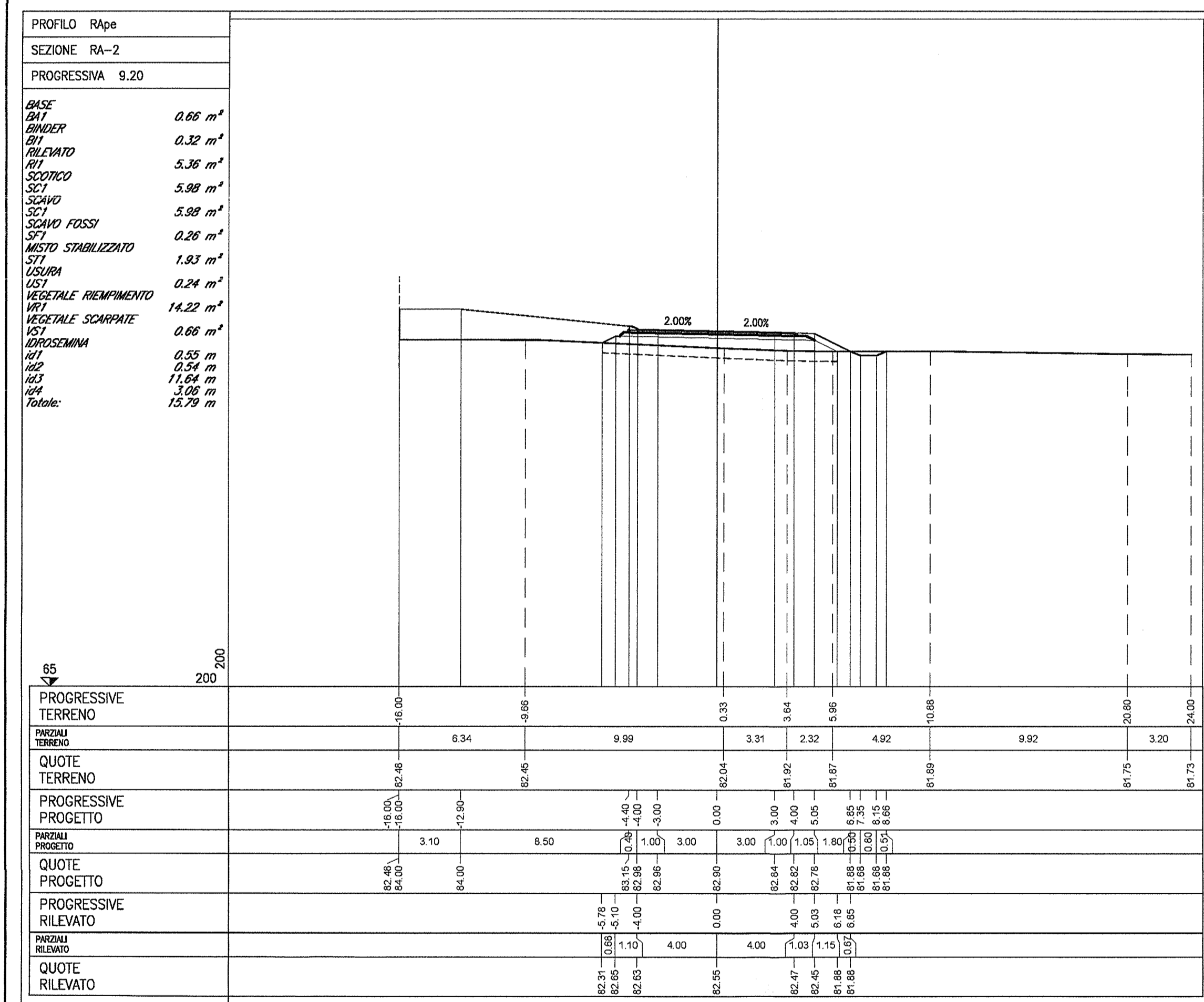
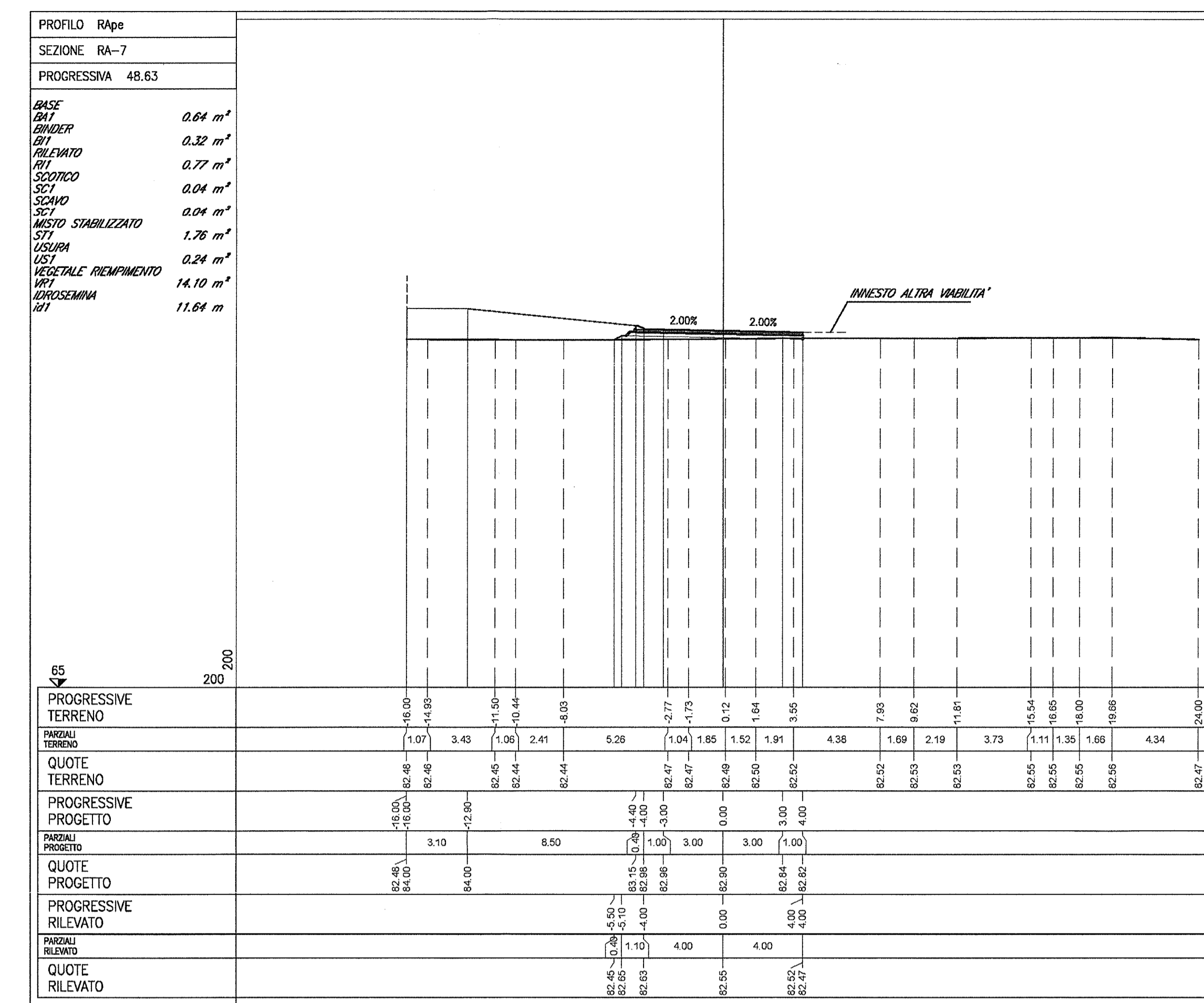
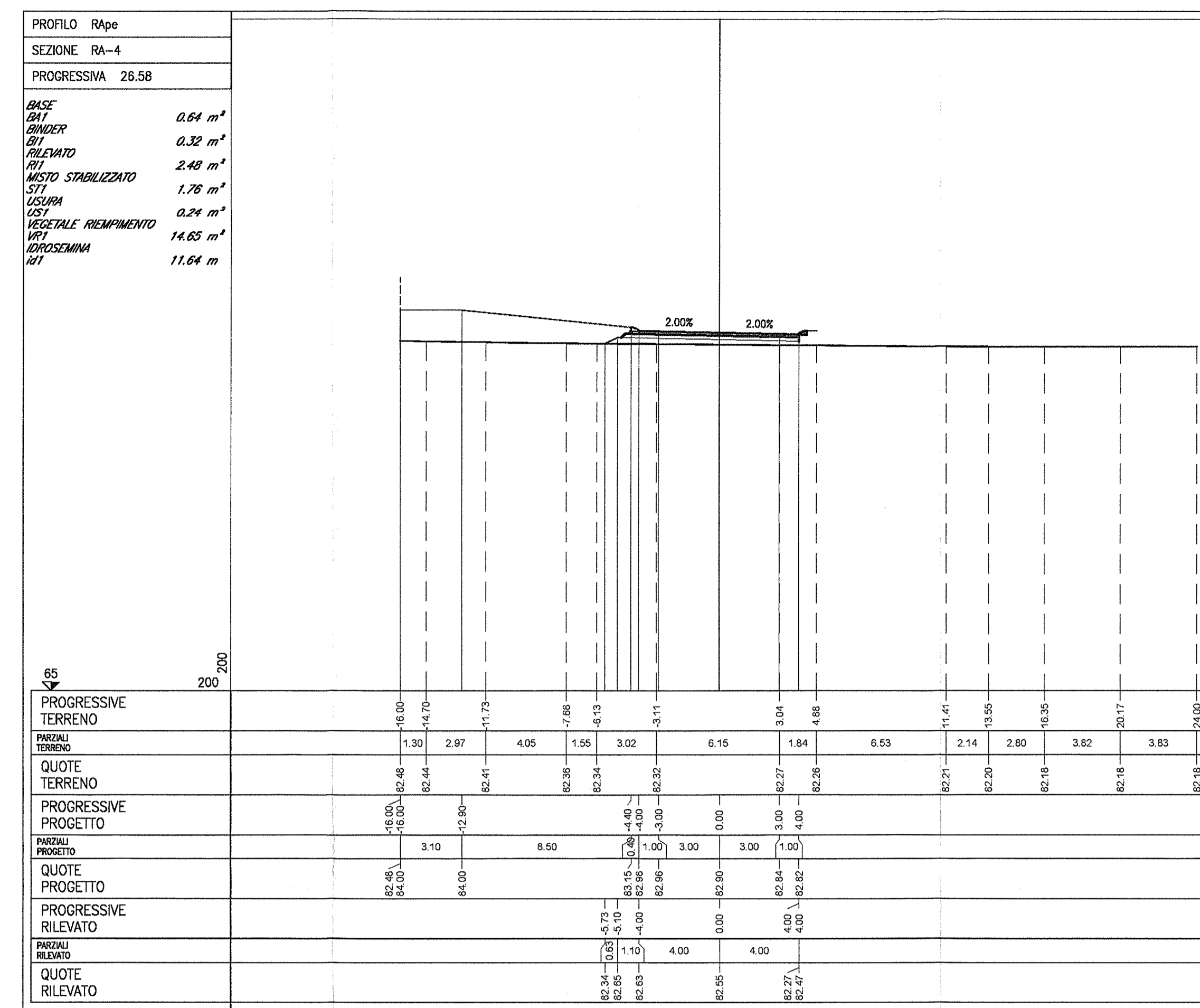
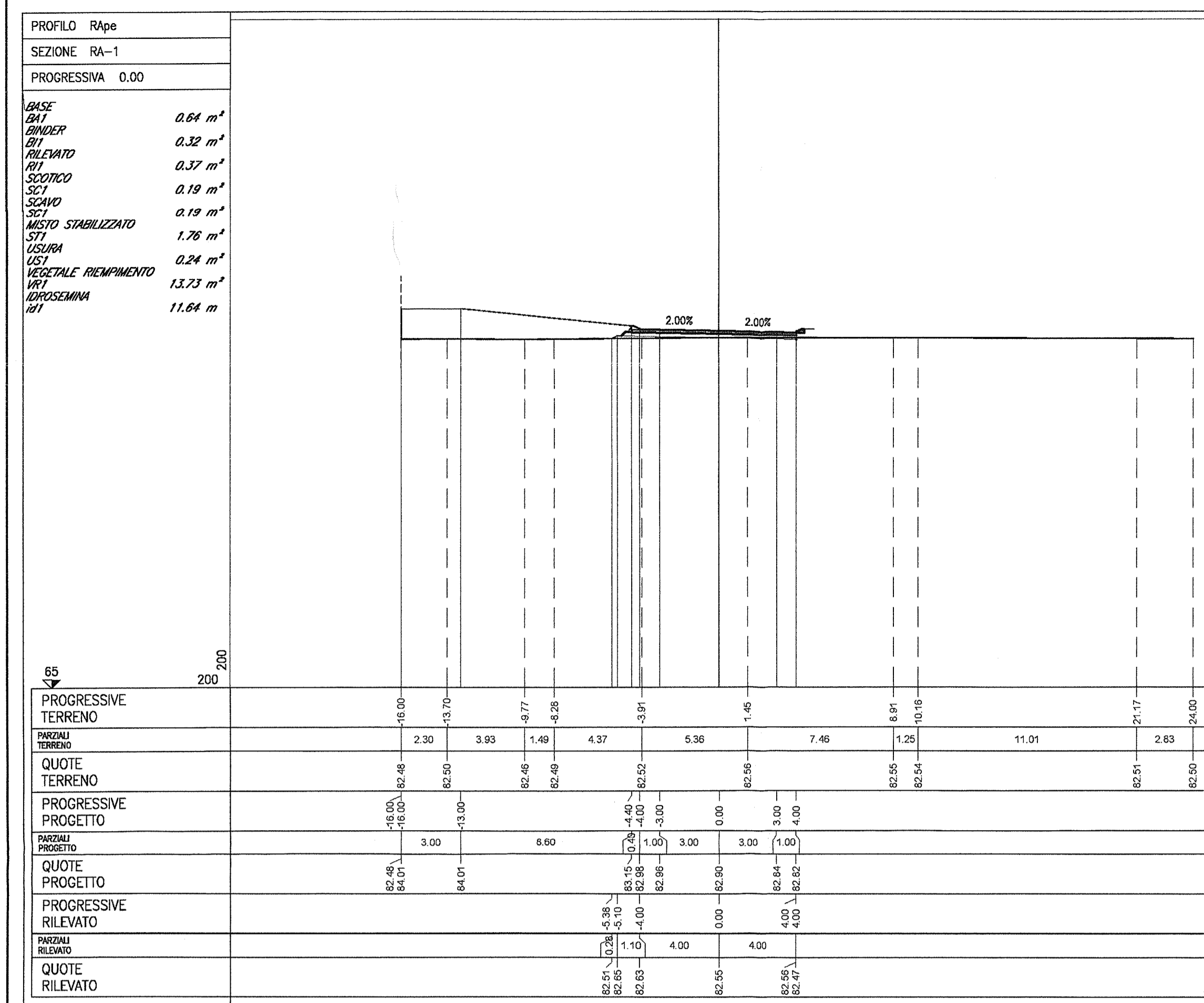


IND2 - RAMP. CAVALLEROTTA TIPOLOGICO  
 RELAZIONE DI VERIFICA DELLE PARAMETRAZIONI STRADALI  
 NV22 - RIQUALIFICAZIONE VIA CASON - VIA CANOVA

IND11E22M2200001  
 IND11E22M2200002  
 IND11E22M2200003  
 IND11E22M2200004  
 IND11E22M2200005  
 IND11E22M2200006  
 IND11E22M2200007  
 IND11E22M2200008  
 IND11E22M2200009  
 IND11E22M2200010  
 IND11E22M2200011  
 IND11E22M2200012  
 IND11E22M2200013  
 IND11E22M2200014  
 IND11E22M2200015  
 IND11E22M2200016  
 IND11E22M2200017  
 IND11E22M2200018  
 IND11E22M2200019  
 IND11E22M2200020  
 IND11E22M2200021  
 IND11E22M2200022  
 IND11E22M2200023  
 IND11E22M2200024  
 IND11E22M2200025  
 IND11E22M2200026  
 IND11E22M2200027  
 IND11E22M2200028  
 IND11E22M2200029  
 IND11E22M2200030  
 IND11E22M2200031  
 IND11E22M2200032  
 IND11E22M2200033  
 IND11E22M2200034  
 IND11E22M2200035  
 IND11E22M2200036  
 IND11E22M2200037  
 IND11E22M2200038  
 IND11E22M2200039  
 IND11E22M2200040  
 IND11E22M2200041  
 IND11E22M2200042  
 IND11E22M2200043  
 IND11E22M2200044  
 IND11E22M2200045  
 IND11E22M2200046  
 IND11E22M2200047  
 IND11E22M2200048  
 IND11E22M2200049  
 IND11E22M2200050  
 IND11E22M2200051  
 IND11E22M2200052  
 IND11E22M2200053  
 IND11E22M2200054  
 IND11E22M2200055  
 IND11E22M2200056  
 IND11E22M2200057  
 IND11E22M2200058  
 IND11E22M2200059  
 IND11E22M2200060  
 IND11E22M2200061  
 IND11E22M2200062  
 IND11E22M2200063  
 IND11E22M2200064  
 IND11E22M2200065  
 IND11E22M2200066  
 IND11E22M2200067  
 IND11E22M2200068  
 IND11E22M2200069  
 IND11E22M2200070  
 IND11E22M2200071  
 IND11E22M2200072  
 IND11E22M2200073  
 IND11E22M2200074  
 IND11E22M2200075  
 IND11E22M2200076  
 IND11E22M2200077  
 IND11E22M2200078  
 IND11E22M2200079  
 IND11E22M2200080  
 IND11E22M2200081  
 IND11E22M2200082  
 IND11E22M2200083  
 IND11E22M2200084  
 IND11E22M2200085  
 IND11E22M2200086  
 IND11E22M2200087  
 IND11E22M2200088  
 IND11E22M2200089  
 IND11E22M2200090  
 IND11E22M2200091  
 IND11E22M2200092  
 IND11E22M2200093  
 IND11E22M2200094  
 IND11E22M2200095  
 IND11E22M2200096  
 IND11E22M2200097  
 IND11E22M2200098  
 IND11E22M2200099  
 IND11E22M2200100



NOTE GENERALI

TUTE LE MISURE SONO ESPRESSE IN METRI

COMMITTEE: **RFI** GRUPPO FERROVIE DELLO STATO

ALTA Sorveglianza: **ITALFERR** GRUPPO FERROVIE DELLO STATO

GENERAL CONTRACTOR: **Cepav due** Consorzio ENI per l'Alta Velocità

INFRASTRUTTURE FERROVIARIE STRATEGICHE DEFINITE DALLA LEGGE OBIETTIVO N. 443/01

LINEA A.V. I.A.C. TORINO - VENEZIA Tratta MILANO - VERONA  
 Lotto funzionale Brescia-Verona  
 PROGETTO ESECUTIVO  
 NV22 - RIQUALIFICAZIONE VIA CASON - VIA CANOVA  
 Rotatoria A. Sezioni trasversali. Tavole 1/2

GENERAL CONTRACTOR: **Cepav due** Consorzio Cepav due Il Direttore del Consorzio (Ing. T. Adorno)

DATE: 06 GIU 2008

COMMISSION: LOTTO FASE ENTE TIPO DOC. OPERA/DISCIPLINA PROG. REV.  
**INOR 11 E E2 W9 NV22A0 001 A**

PROGETTATIONE: **ROBERTO** IL PROGETTISTA

Rev. Descrizione Nuova Data Verifica Data  
 A EMISSIONE 17/05/10 17/05/10  
 B  
 C

COD. 75144733A Stampato dal Servizio di progetto della Unione Europea File: INOR11E22M22A007A\_10.dwg  
 Scalas di plot: 1:1 ALBA s.r.l. CUP: I81H1000008