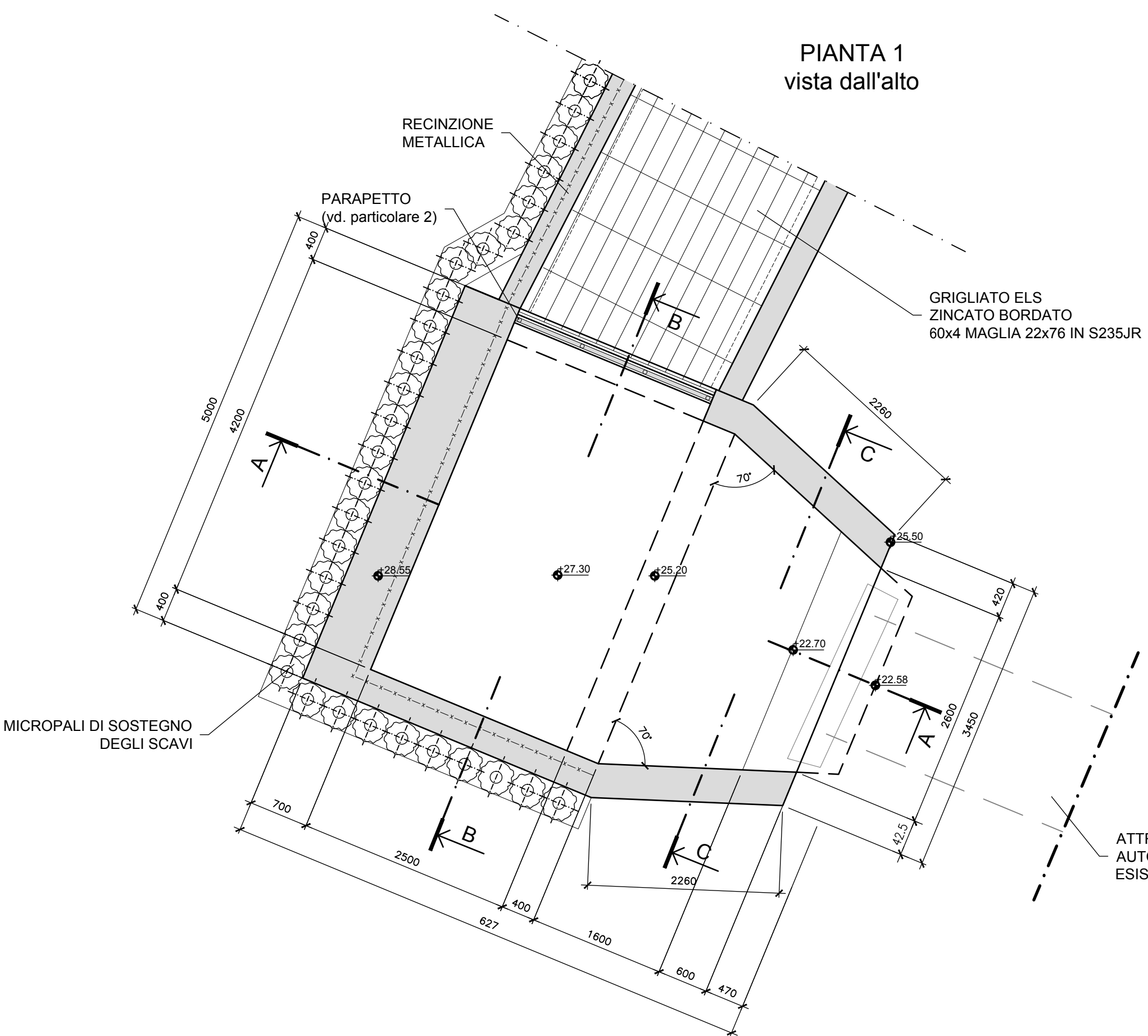
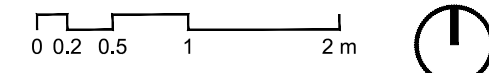
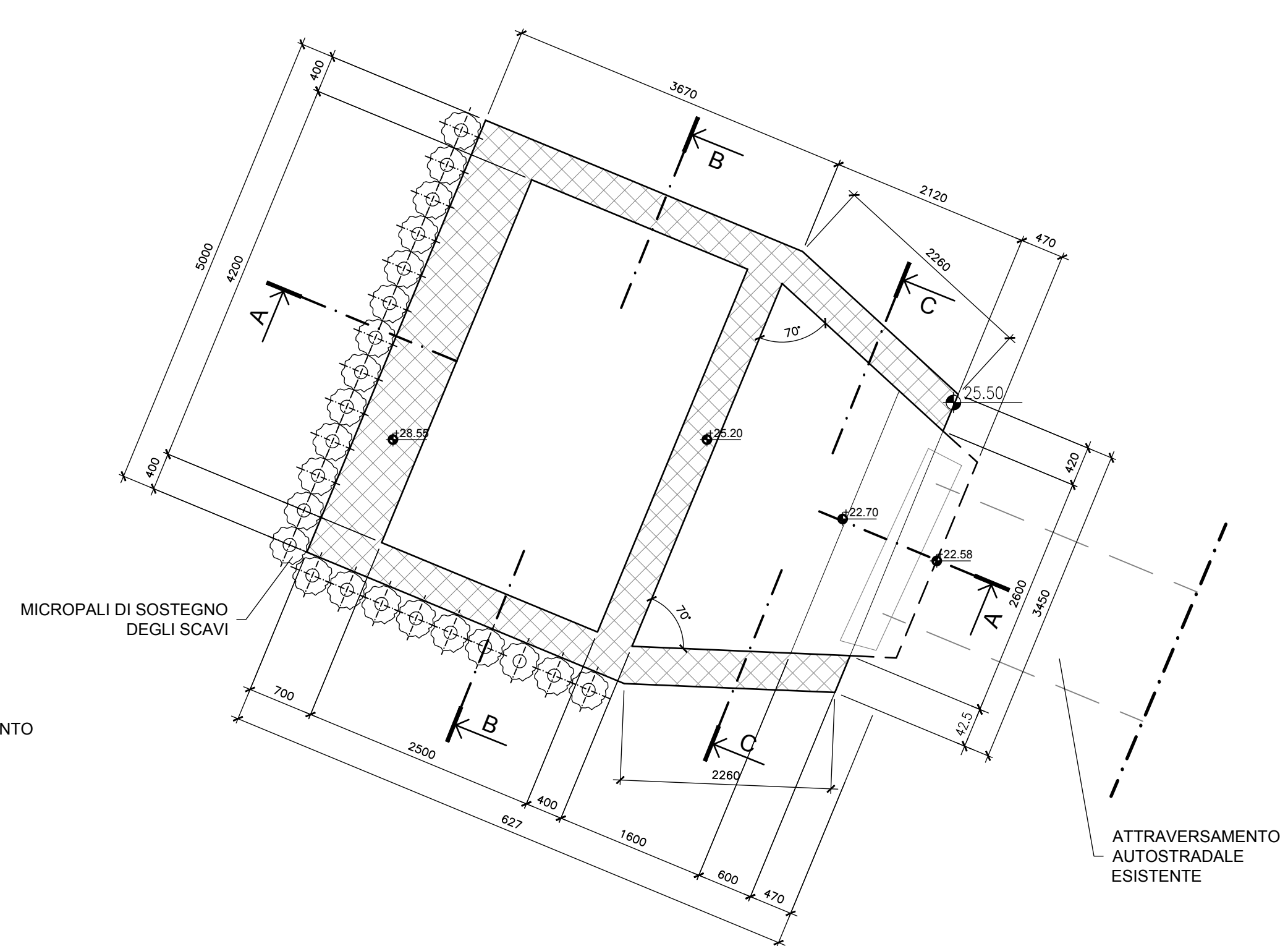


MANUFATTO DI SFIORO - PIANTE E SEZIONI

Scala 1:50

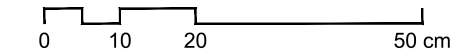


PIANTA 2 (quota 23.50m s.m.m.)

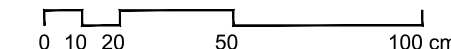


PARTICOLARE 3 - LAMIERA PIEGATA PER RESTRINGIMENTO LUCE

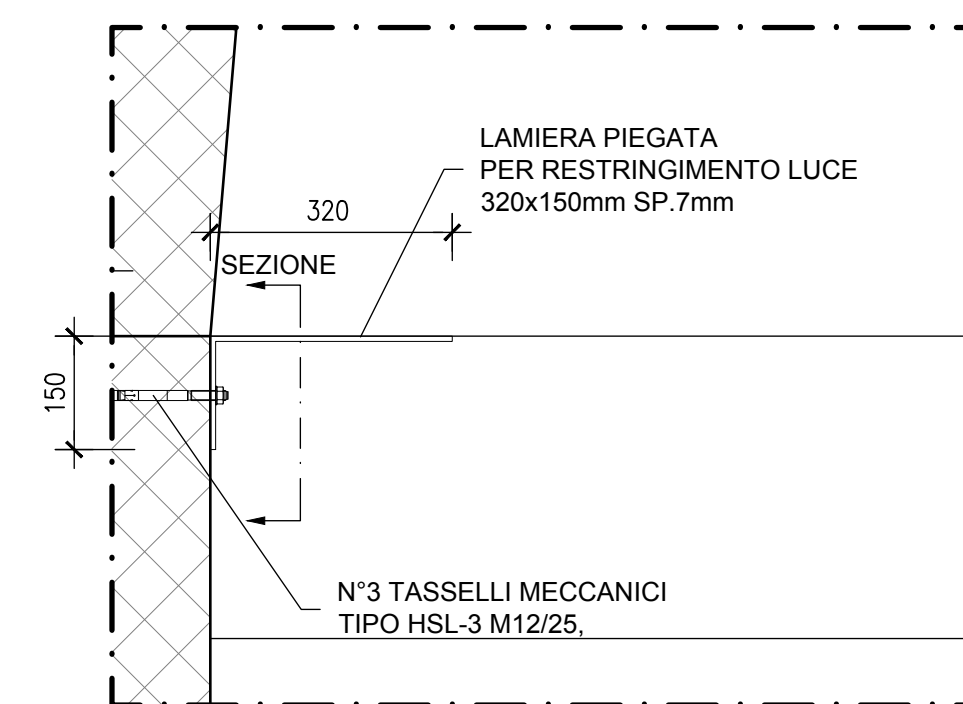
Scala 1:10



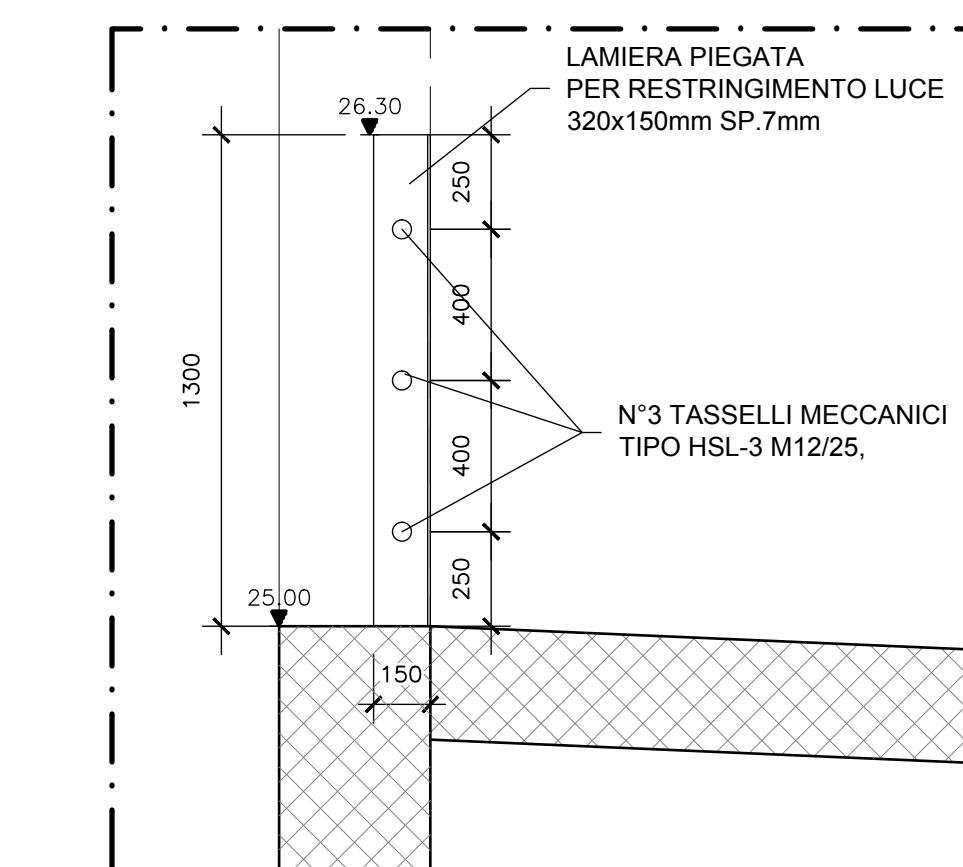
Scala 1:20



PIANTA scala 1:10

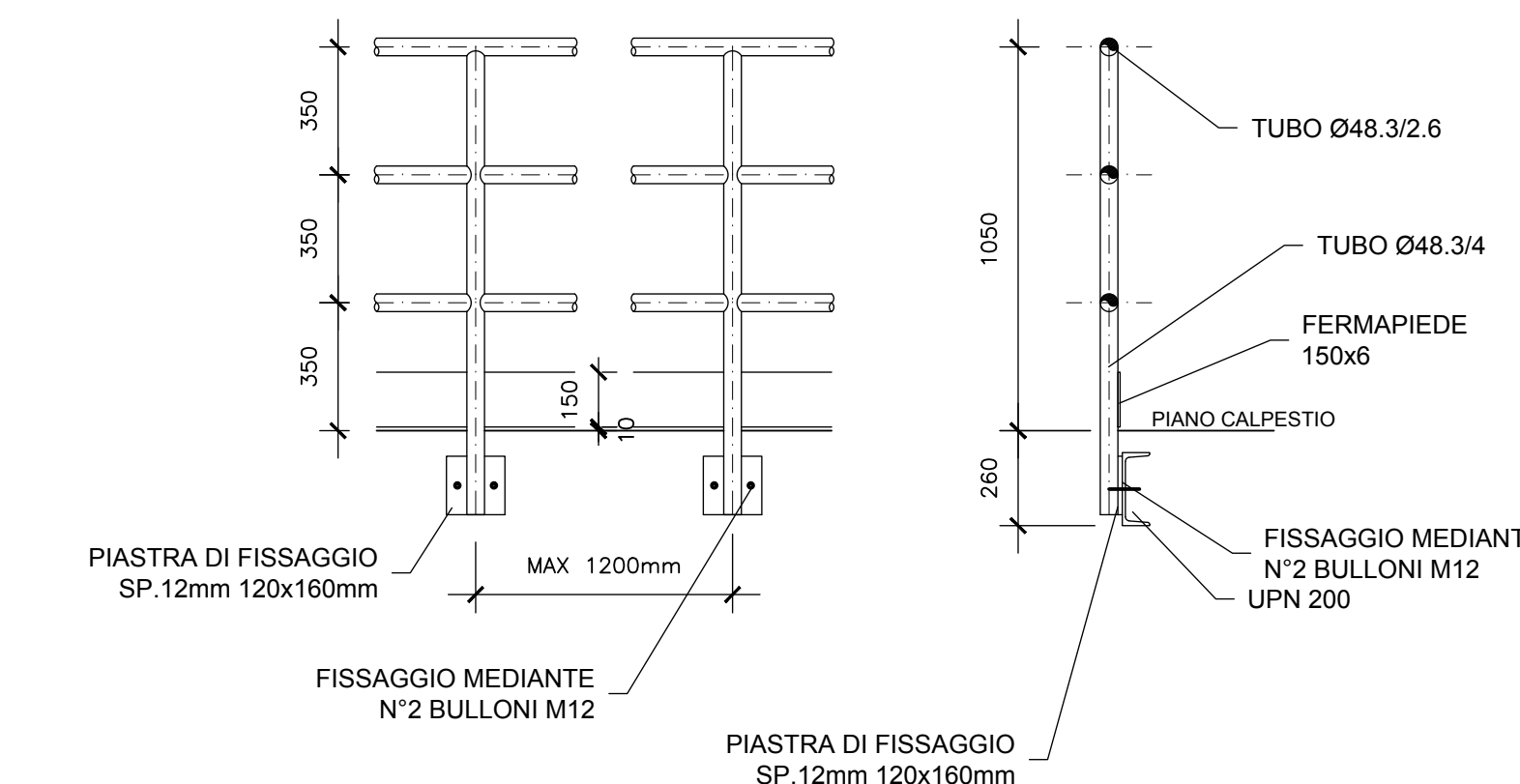
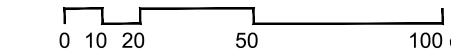


SEZIONE scala 1:20

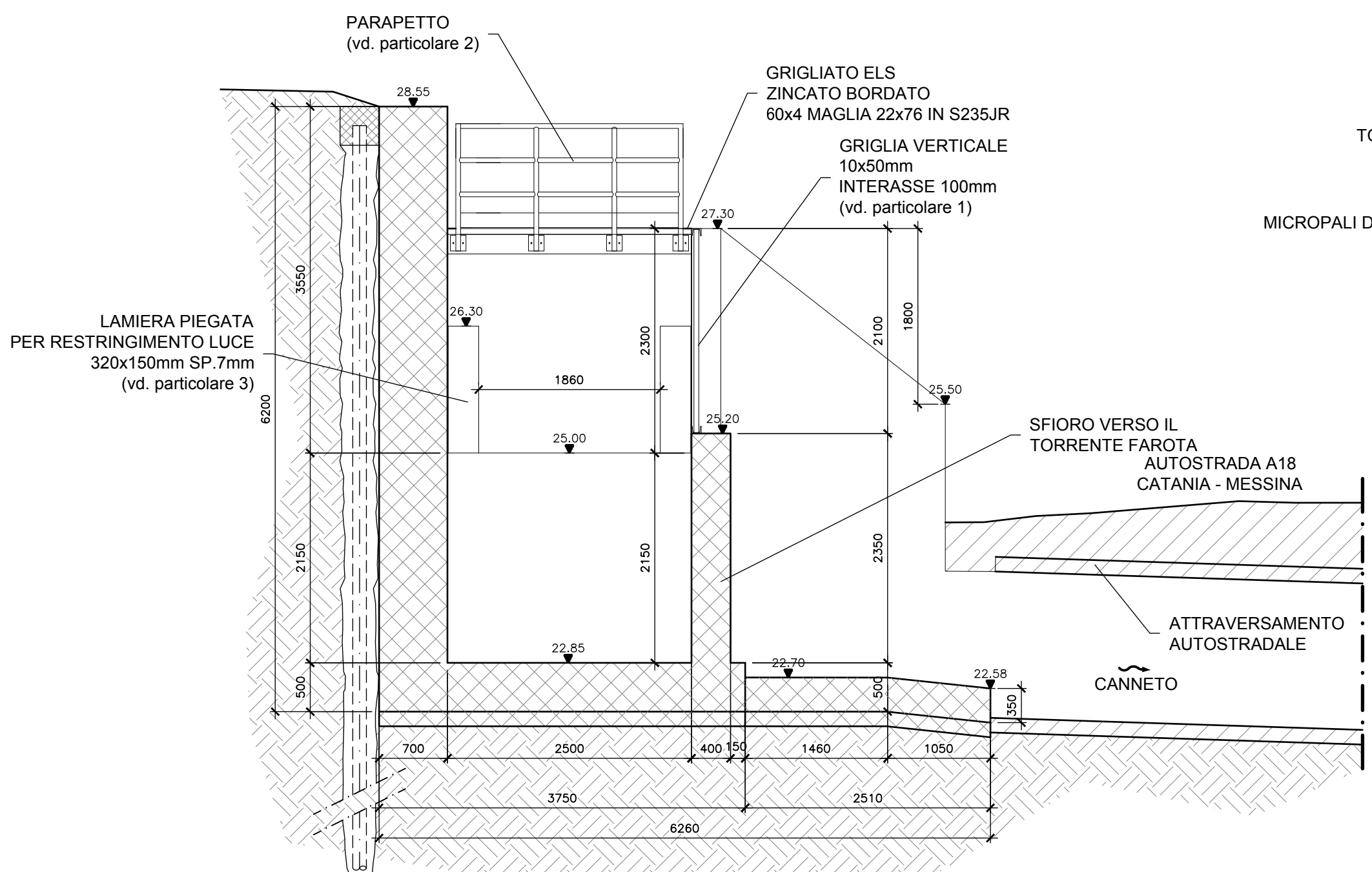


PARTICOLARE 2 - PARAPETTO CON FISSAGGIO SU PASSERELLA IN ACCIAIO

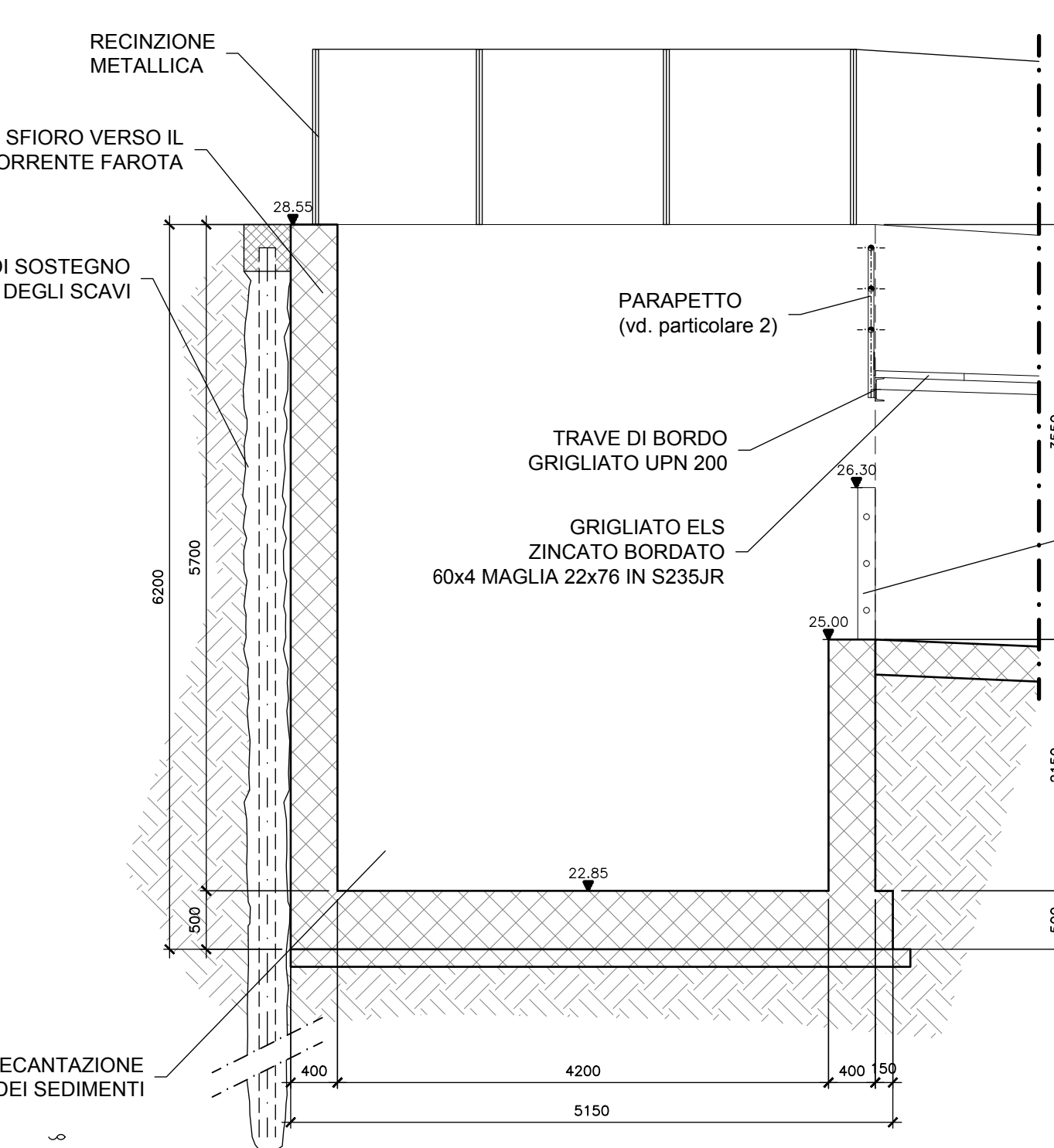
Scala 1:20



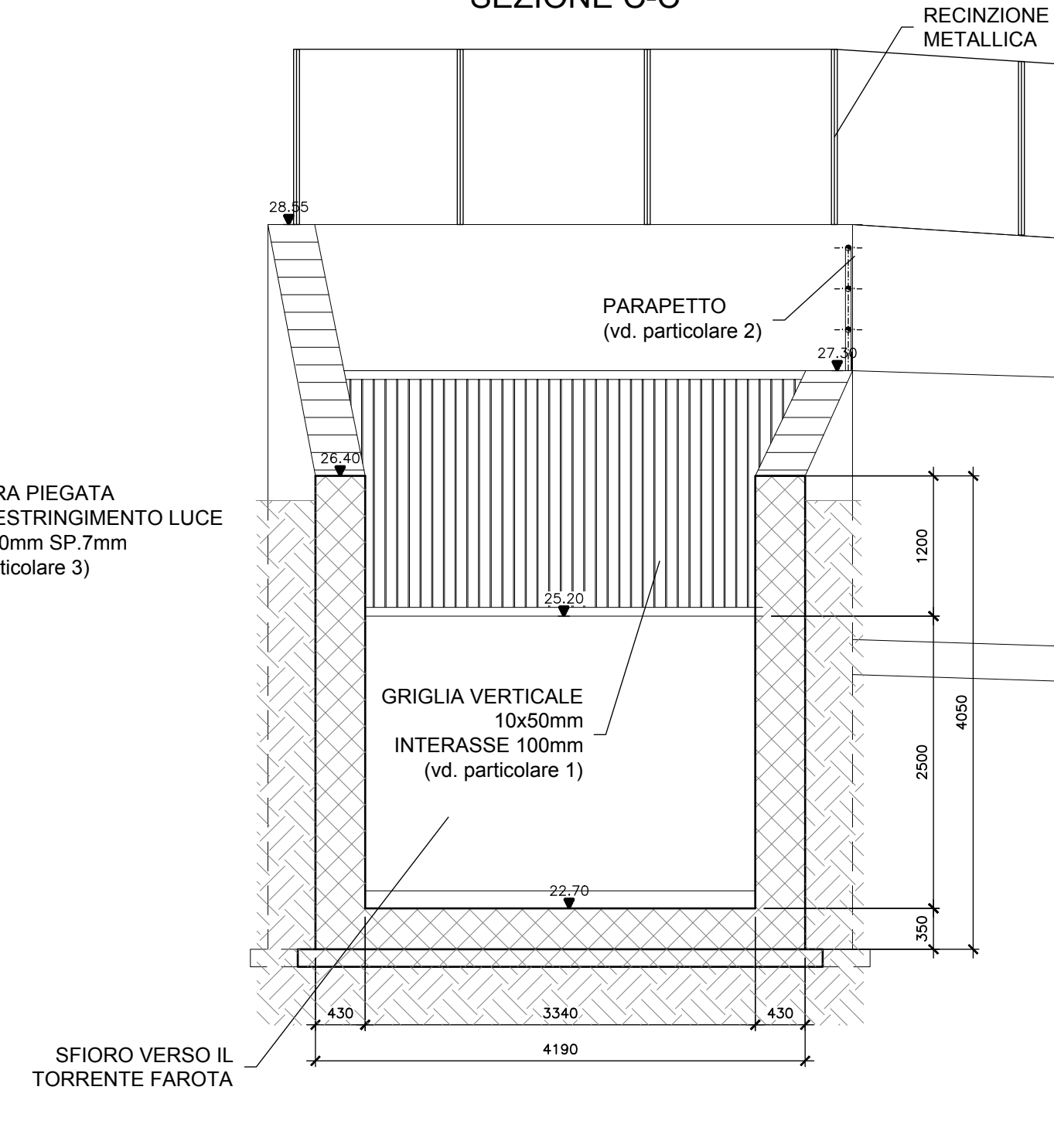
SEZIONE A-A



SEZIONE B-B

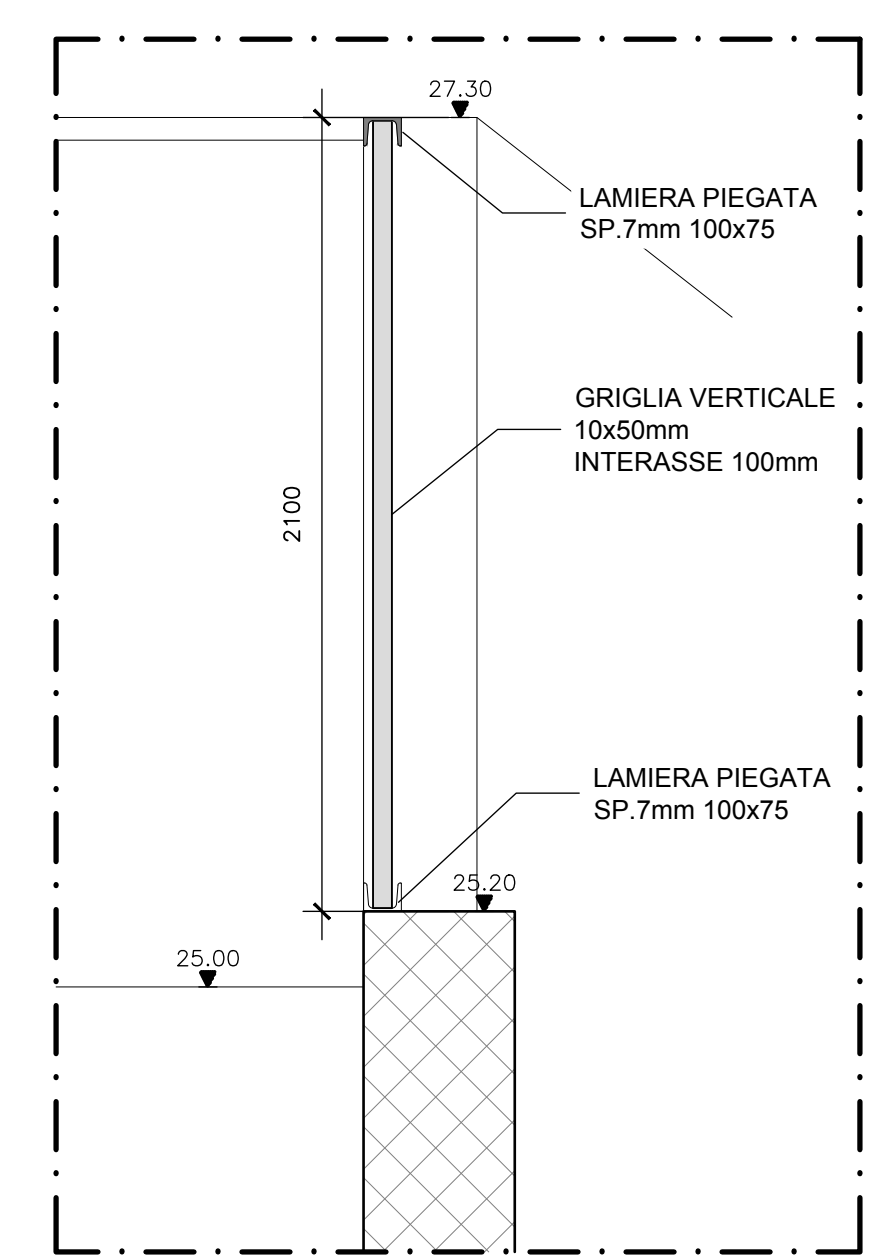
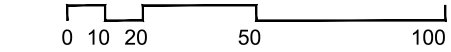


SEZIONE C-C



PARTICOLARE 1 - GRIGLIA FERMADETRITI

Scala 1:20



IMPRESA APPALTRICE  
**CO.ED.MAR.**  
Via E. Mattei, 1022  
00100 Roma  
Tel: +39 041 4987 925  
Fax: +39 041 4987 914  
www.coedmar.it

COOPATA  
**INGEGNERIA**  
Via Regina Elena, 125 - Messina  
Tel: +39 041 3785 711  
Fax: +39 041 4355 933  
www.in-ingegneria.com

PROGETTAZIONE  
**FCM**  
ingegneria  
**DROTEC**  
Ing. Vincenzo Iacopino  
Studio Tecnico Falzese  
Arch. Claudio Lucchesi  
Ing. Manlio Marino  
Dot. Geol. Sergio Dolfin

PROGETTO  
**COMUNE DI MESSINA**  
LAVORI DI COSTRUZIONE DELLA PIATTAFORMA LOGISTICA INTERMODALE TREMESTIERI CON ANNESSO SCALO PORTUALE - PRIMO STRALCIO FUNZIONALE

EMISSIONE  
**PROGETTO ESECUTIVO**

TITOLO  
D - OPERE D'ARTE SUI TORRENTI FAROTA E GUIDARI  
Collegamento Torrente Canneto / Torrente Farota - manufatto di sfioro

REV.	DATA	FILE	OGGETTO	DIS.	APPR.
1					
2					
3					
4					
5					

ELABORATO N. **D118**

DATA	SCALA	FILE	J.N.
10/2017	varie	1044_D118_0.dwg	1044
PROGETTO	DISEGNO	VERIFICA	APPROVAZIONE
G. Carretta	M. Dell'Aversana	L. Masiero	T. Tassi