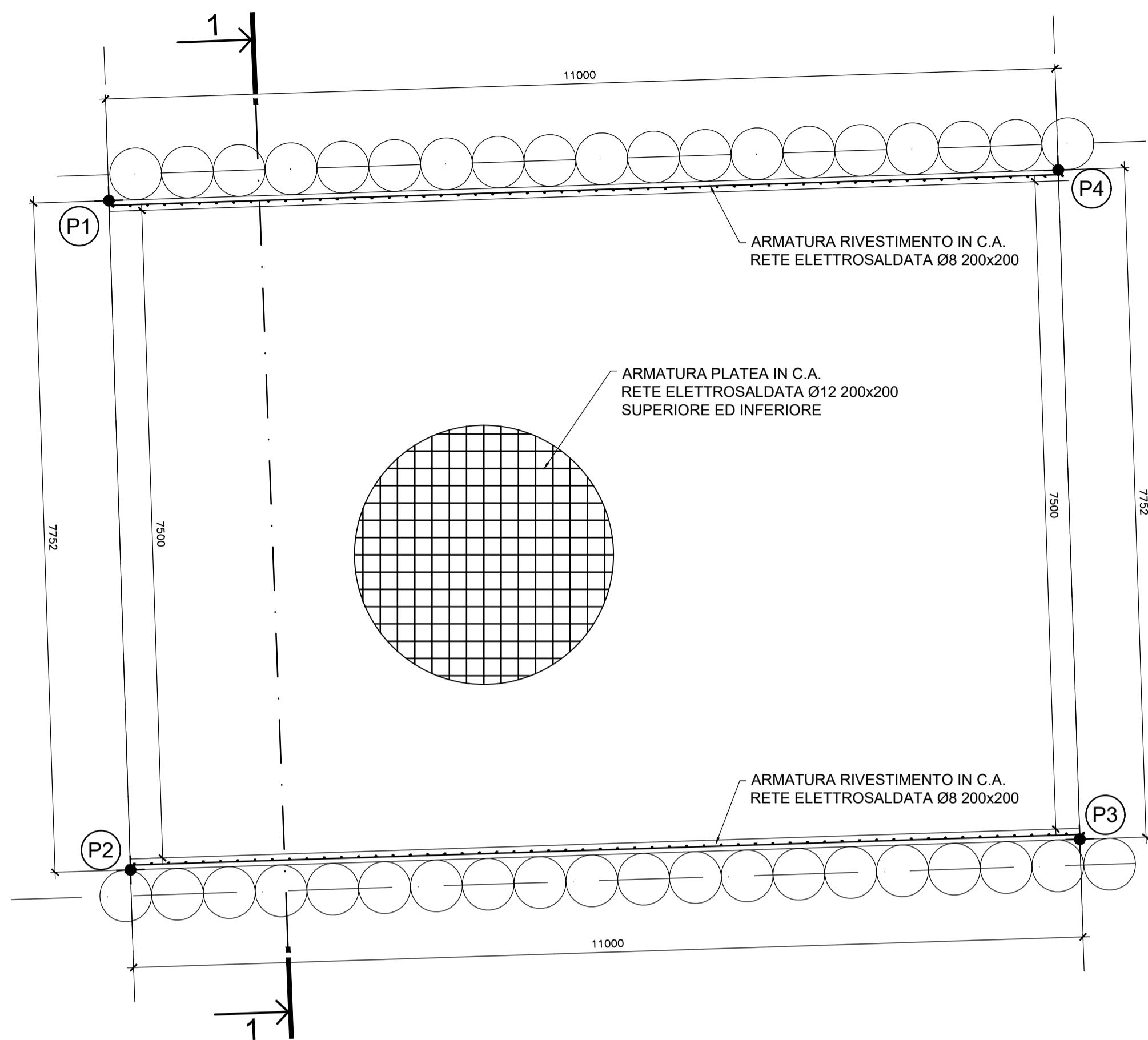
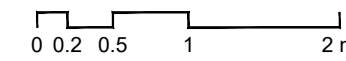
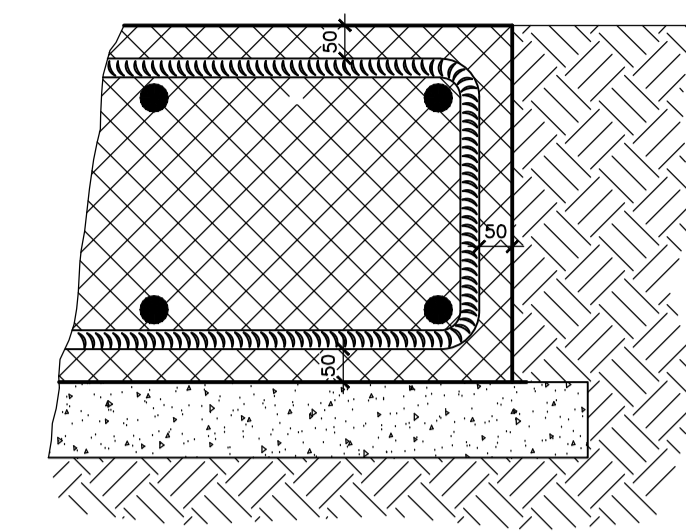


PIANTA FONDAZIONI - ARMATURE

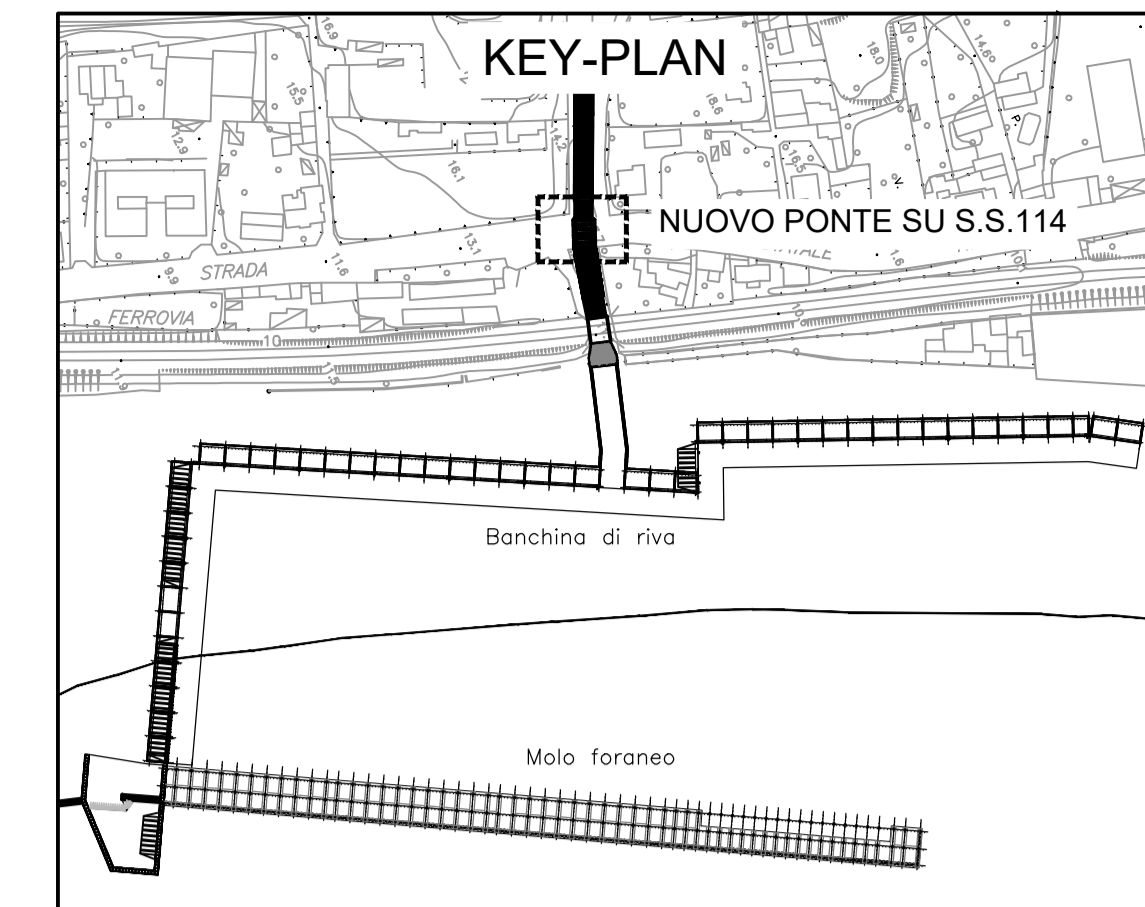
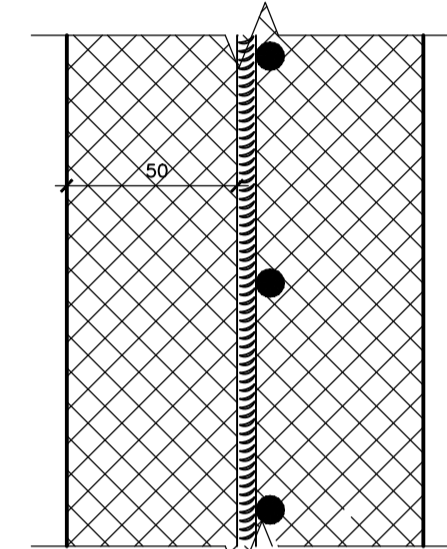
Scala 1:50



PARTICOLARE COPRIFERRO PATEA

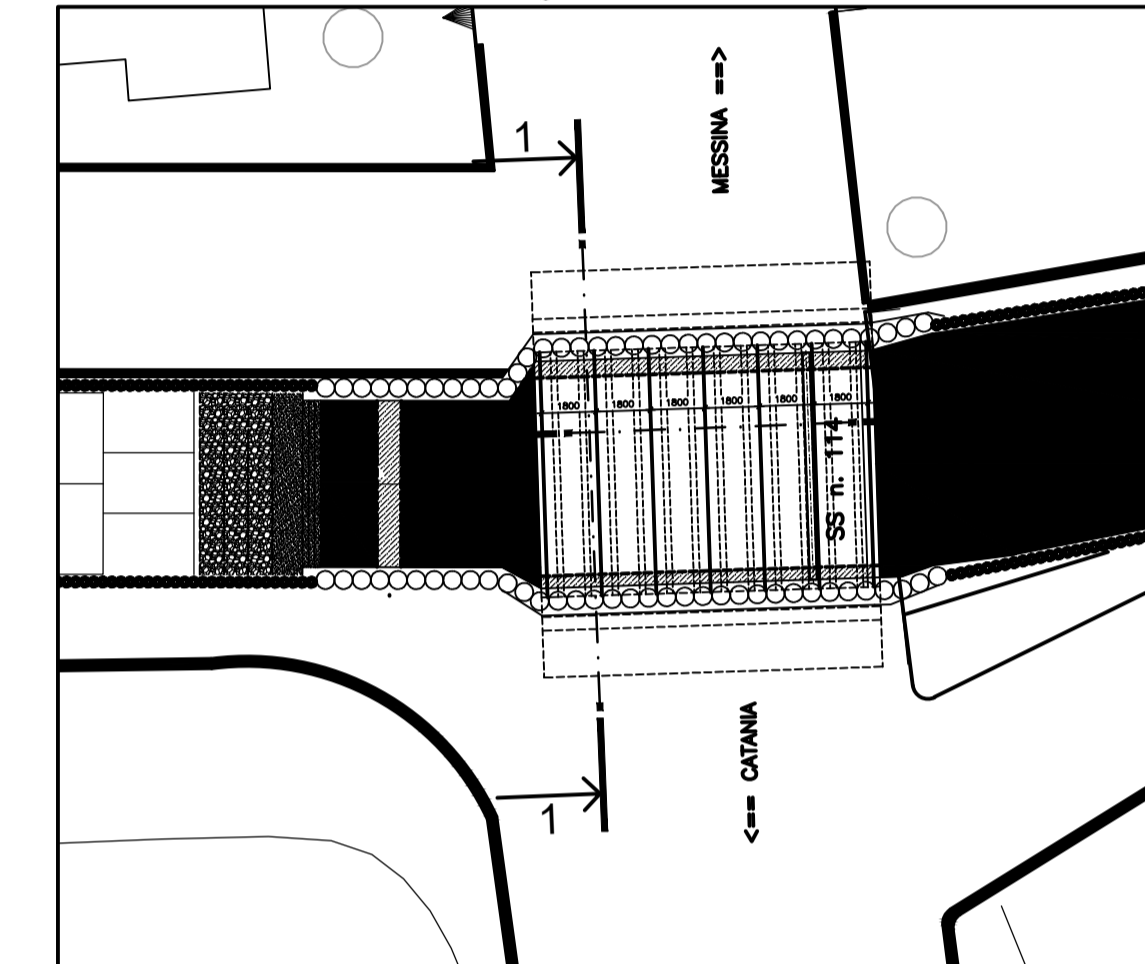
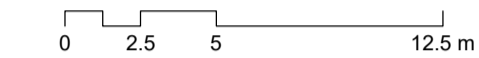


PARTICOLARE COPRIFERRO RIVESTIMENTO



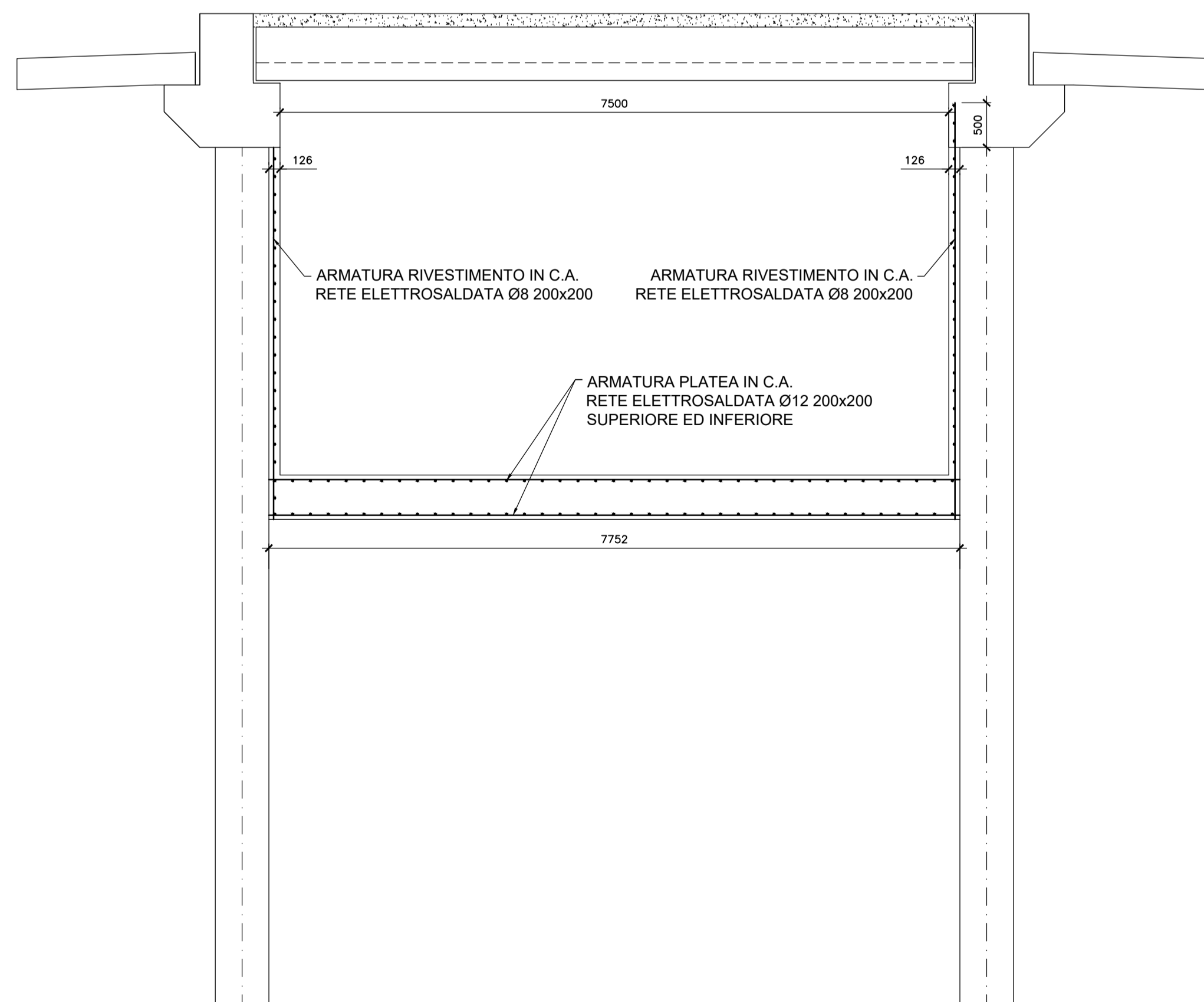
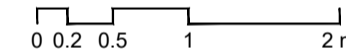
PIANTA IMPALCATO

Scala 1:250



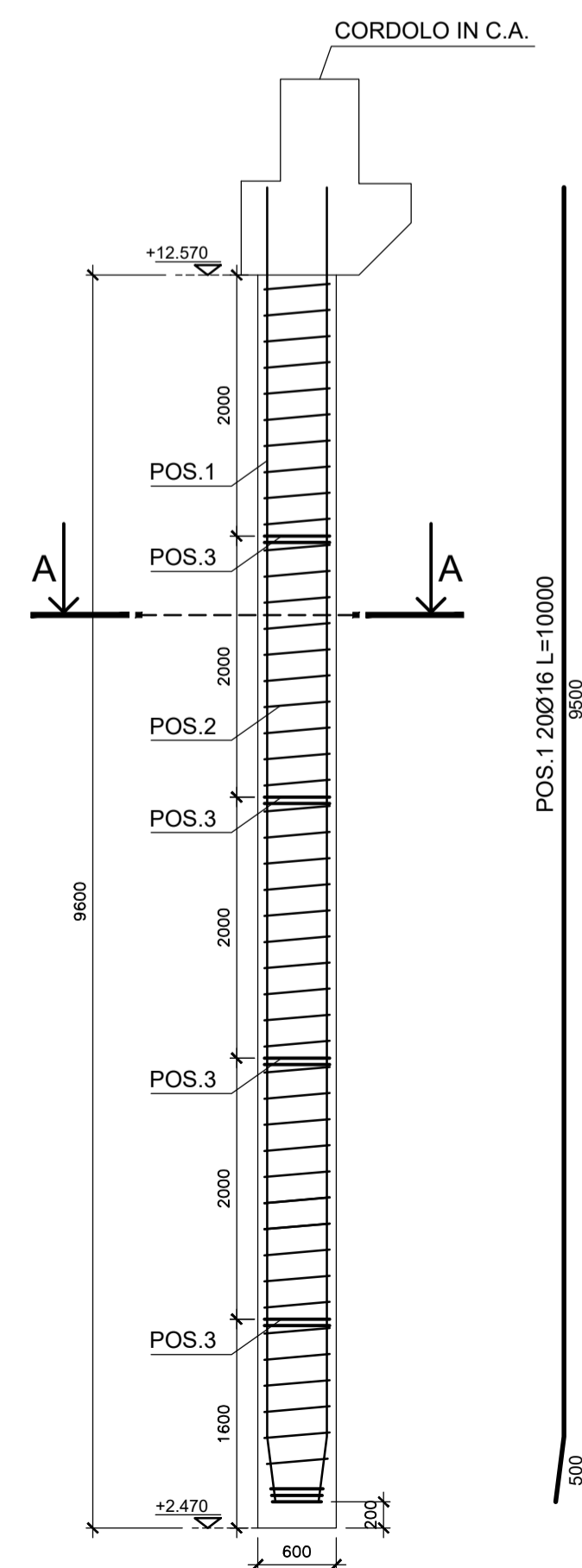
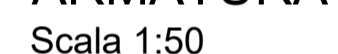
SEZIONE 1-1 - ARMATURE OPERE DI SOSTEGNO

Scala 1:50



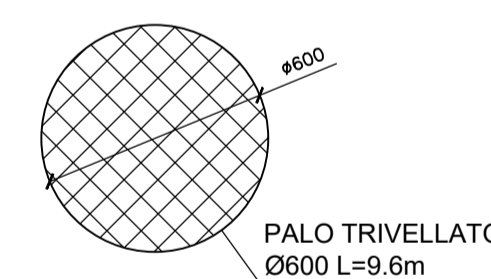
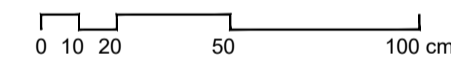
PALO DI FONDAZIONE ARMATURA

Scala 1:50

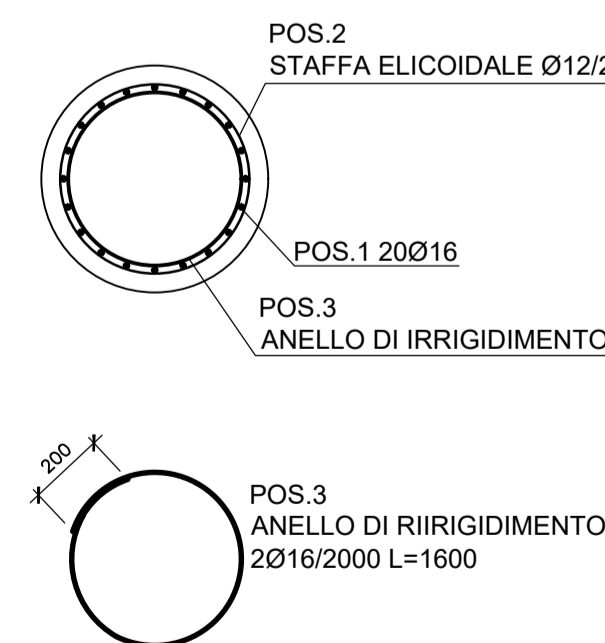


SEZIONE PALO Ø600

Scala 1:20



SEZIONE A-A



Comune di Messina

IMPRESA APPALTRICE
CO.E.D.MAR.
30015 Choggia (VE) Tel. +39 041 4967 925
Banchina P - 142 da Rio Fax +39 041 4967 914
www.coedmar.it contratti@coedmar.it

COOPTATA
INGEGNERIA INTEGRATA
40102 Bologna Tel. +39 051 3161 300
Via M. E. Lupatolo, 9502 Fax +39 051 3161 300
www.consucooptata.it info@consucooptata.it

PROGETTAZIONE
FCM ingegneria
30035 Mirano (VE) Tel. +39 041 5785 711
Viale Selvedere, 8110 Fax +39 041 4355 933
www.fcm-ingegneria.com tremestieri@fcm-ingegneria.com

IDROTEC
20148 Milano Tel. +39 02 8942 2885
Via Caccopetro, 27 Fax +39 02 8942 5133
mail@idrotec-ingegneria.it

Ing. Vincenzo Iacopino
Studio Tecnico Falzea
Arch. Claudio Lucchesi
Ing. Marilio Marino
Dott. Geol. Sergio Dolfin

PROGETTO
COMUNE DI MESSINA
LAVORI DI COSTRUZIONE DELLA PIATTAFORMA
LOGISTICA INTERMODALE TREMESTIERI CON ANNESSO
SCALO PORTUALE - PRIMO STRALCIO FUNZIONALE

EMISSIONE
PROGETTO ESECUTIVO

TITOLO
D - OPERE D'ARTE SUI TORRENTI FAROTA E GUIDARI
Torrente Guidari - Nuovo ponte su S.S. 114 - Opere di sostegno

| REV. | DATA | FILE | OGGETTO | DIS. | APPR. |
|------|------|------|---------|------|-------|
| 1 | | | | | |
| 2 | | | | | |
| 3 | | | | | |
| 4 | | | | | |
| 5 | | | | | |

ELABORATO N. **D204**

| DATA: | SCALA: | FILE: | J.N. |
|-----------------|---------------------|-----------------|----------|
| 10 ottobre 2017 | 1:100 - 1:50 - 1:20 | 1044_D204_0.dwg | 1044 |
| PROGETTO | VERIFICA | APPROVAZIONE | |
| L. Masiero | I. Cagnin | L. Masiero | T. Tassi |