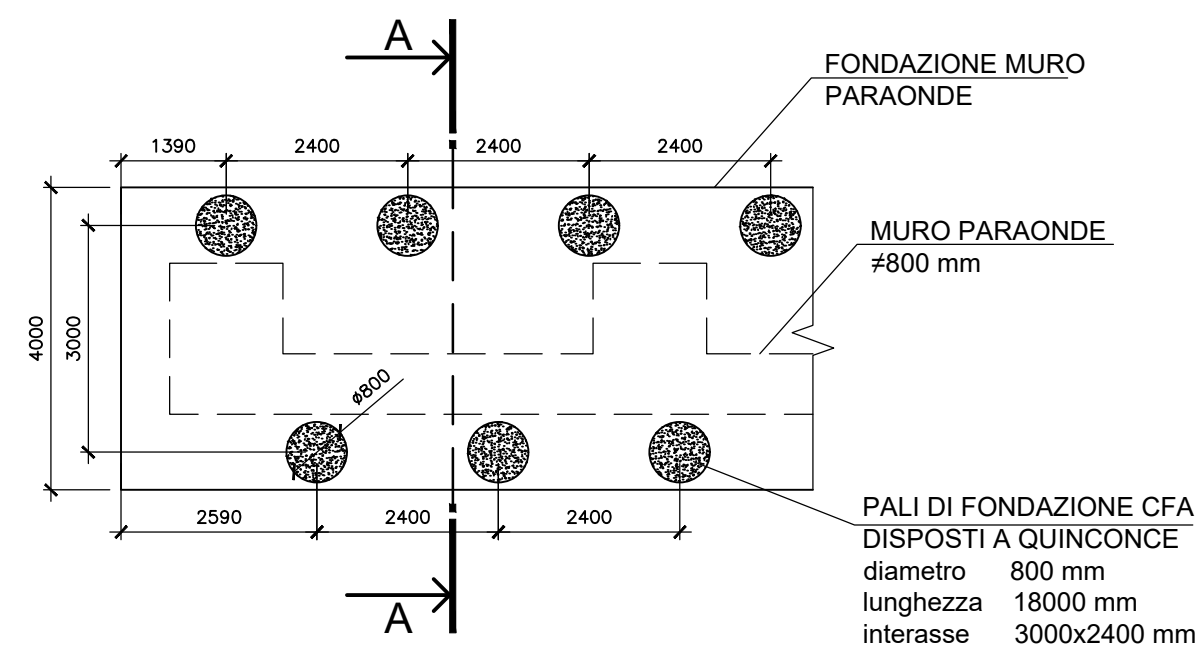
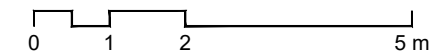


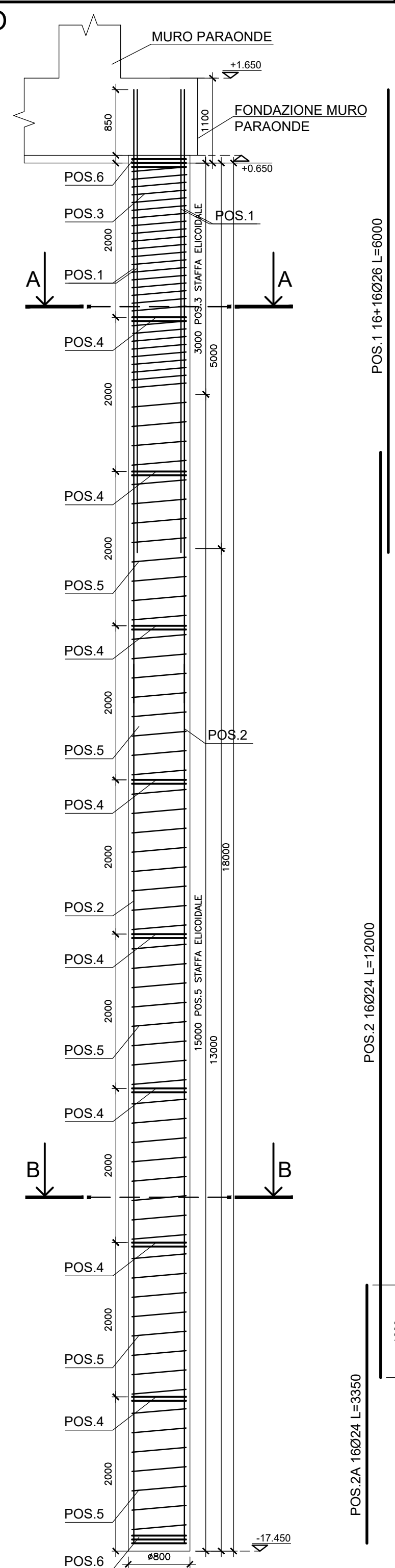
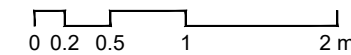
### PIANTA MURO PARAONDE

Scala 1:100



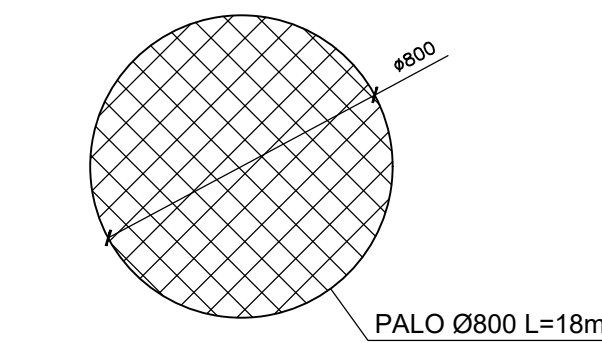
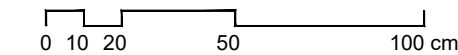
### PALO DI FONDAZIONE MURO PARAONDE- ARMATURA

Scala 1:50

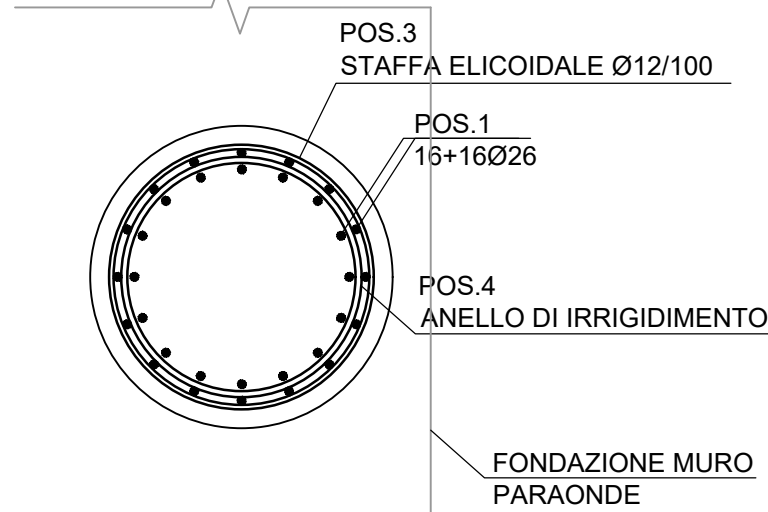


### SEZIONE PALO Ø800

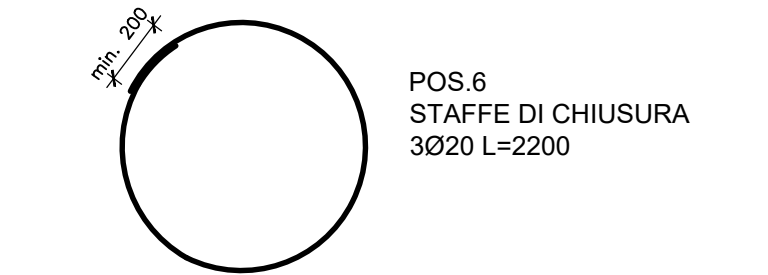
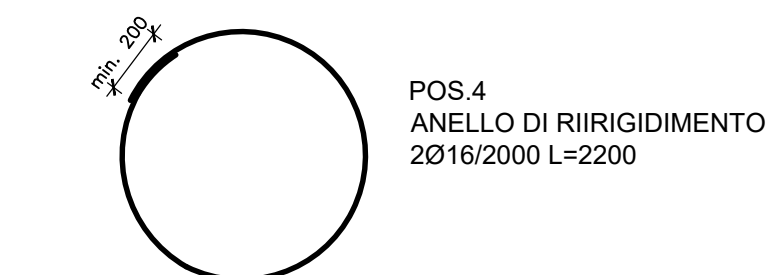
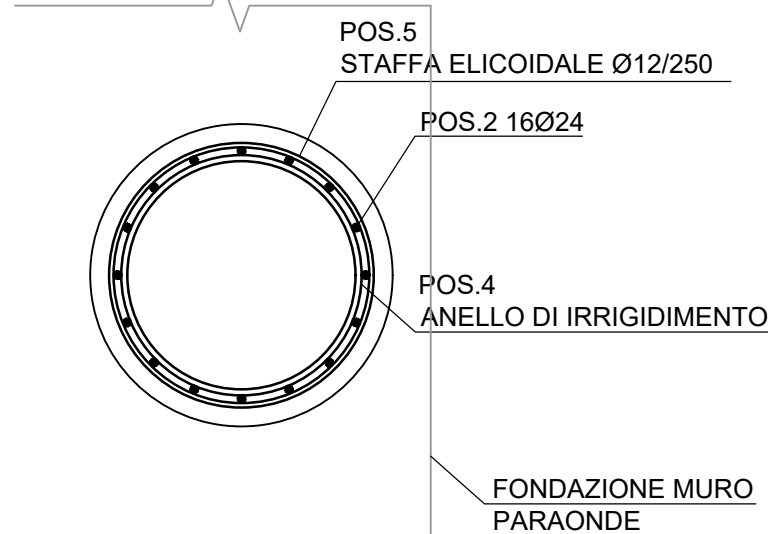
Scala 1:20



### SEZIONE A-A

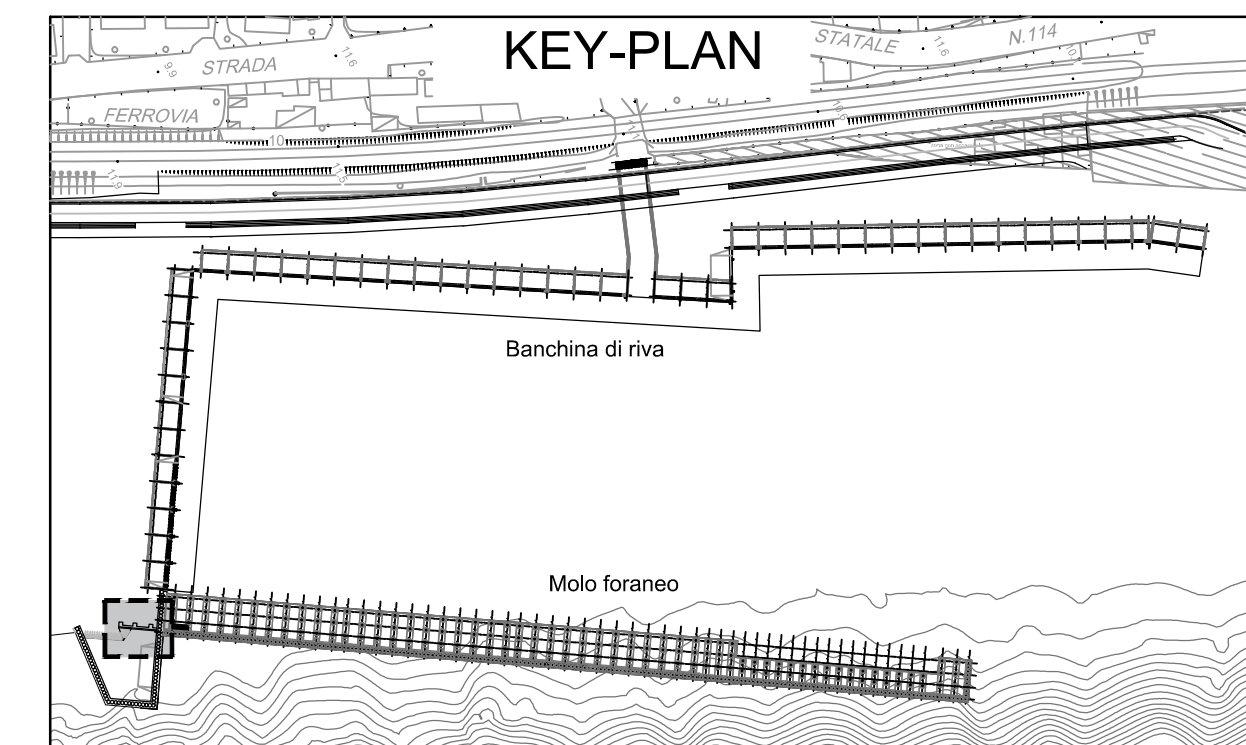
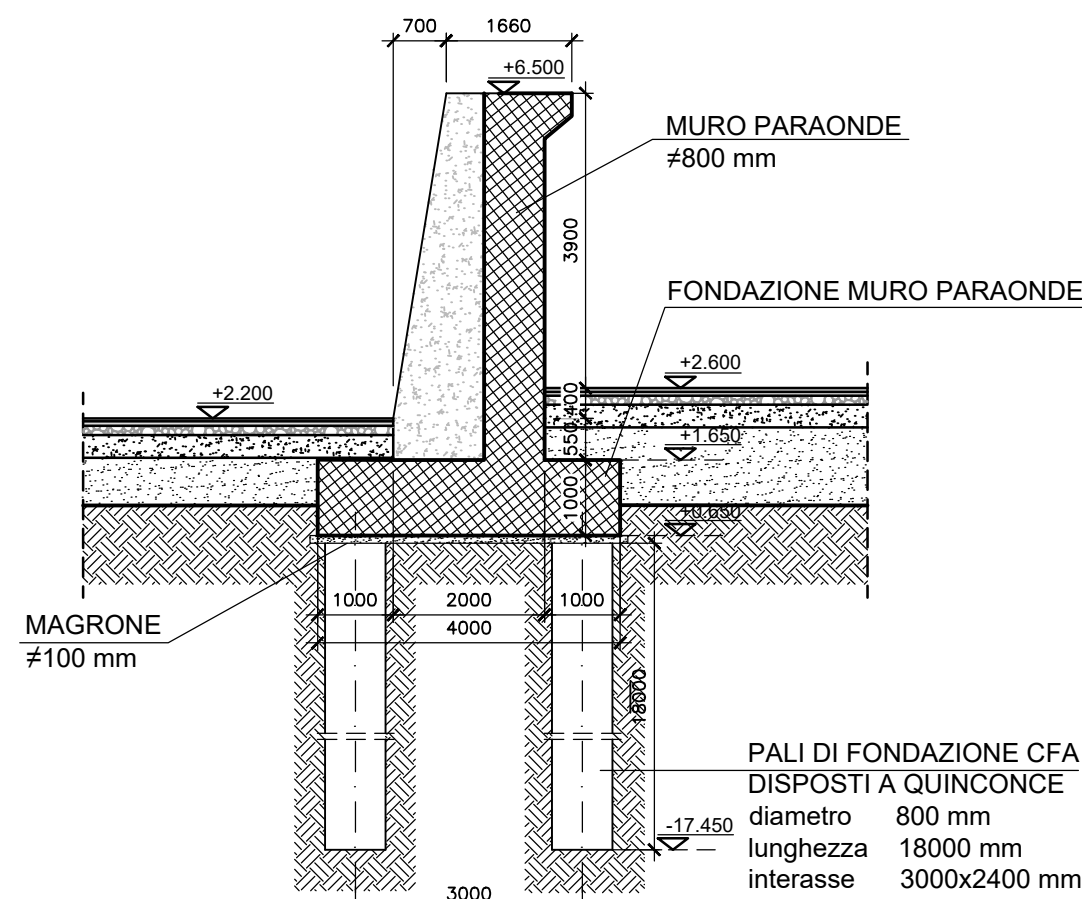
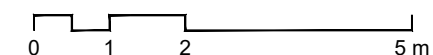


### SEZIONE B-B



### SEZIONE A-A

Scala 1:100



**Comune di Messina**

IMPRESA APPALTRICE  
**CO.E.D.MAR**  
 30015 Chioggia (VE) Tel. +39 041 4967 925  
 Banchina F - Val da Rio Fax +39 041 4967 914  
 www.coedmar.it contratti@coedmar.it

COOPTATA  
**INTEGRA**  
 40132 Bologna Tel. +39 051 3161 300  
 Via M. E. Lepido, 16/22 Fax +39 051 3161 300  
 www.consorziointegra.it integra@consorziointegra.it

PROGETTAZIONE  
**F&M**  
 ingegneria  
 30025 Mirano (VE) Tel. +39 041 5785 711  
 Viale Belvedere, 8/10 Fax +39 041 4355 933  
 www.fm-ingegneria.com tremestieri@fm-ingegneria.com

**IDROTEC**  
 20148 Milano Tel. +39 02 8942 2685  
 Via Caccialepori, 27 Fax +39 02 8942 5133  
 mail@idrotec-ingegneria.it

Ing. Vincenzo Iacopino  
 Studio Tecnico Falzea  
 Arch. Claudio Lucchesi  
 Ing. Manlio Marino  
 Dott. Geol. Sergio Dolfin

Viale Regina Elena, 125 - Messina  
 Via 1° Settembre, 37 - Messina  
 Via Roma, 117 - Pace del Melo (ME)  
 Via Placida, 6 - Messina  
 Via Marina, 4 - Torre Faro (ME)

PROGETTO  
**COMUNE DI MESSINA**  
**LAVORI DI COSTRUZIONE DELLA PIATTAFORMA**  
**LOGISTICA INTERMODALE TREMESTIERI CON ANNESSO**  
**SCALO PORTUALE - PRIMO STRALCIO FUNZIONALE**

EMISSIONE  
**PROGETTO ESECUTIVO**

TITOLO  
**F - STRUTTURE DI BANCHINA**  
 Intervento S - muro paraonde in banchina

REV.	DATA	FILE	OGGETTO	DIS.	APPR.
1					
2					
3					
4					
5					

ELABORATO N. **F225**

DATA:	SCALA:	FILE:	J.N.
10 ottobre 2017	1:100 - 1:50 - 1:20	1044_F225_0.dwg	1044
PROGETTO	DISEGNO	VERIFICA	APPROVAZIONE
L. Masiero	E. Balsamo	L. Masiero	T. Tassi