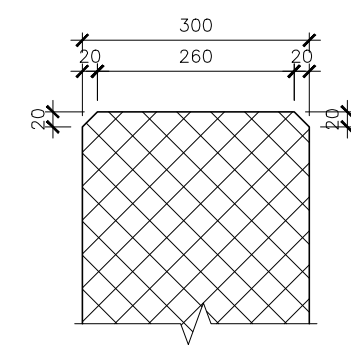
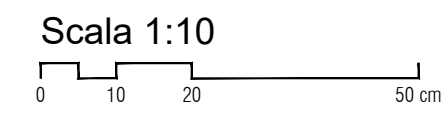
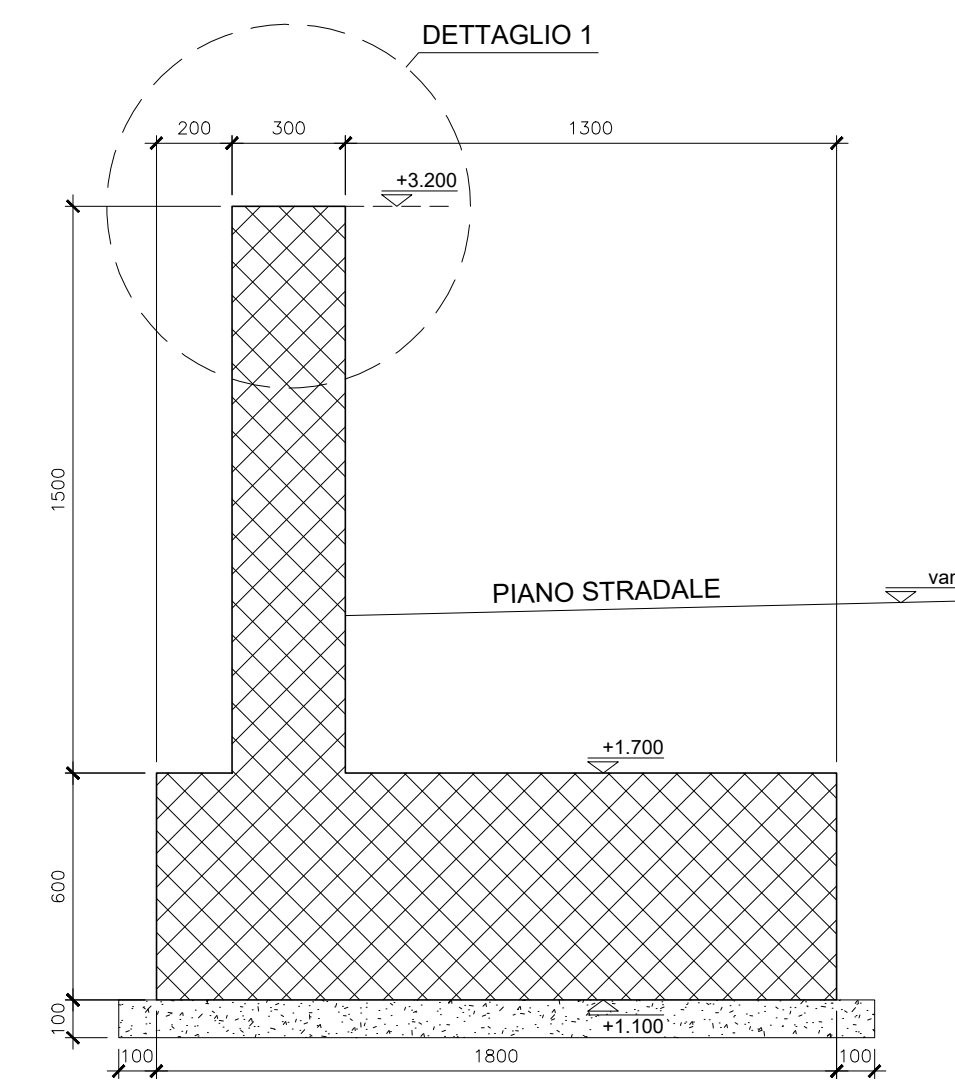
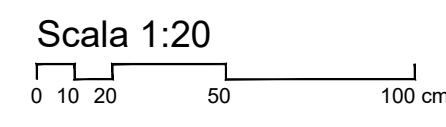


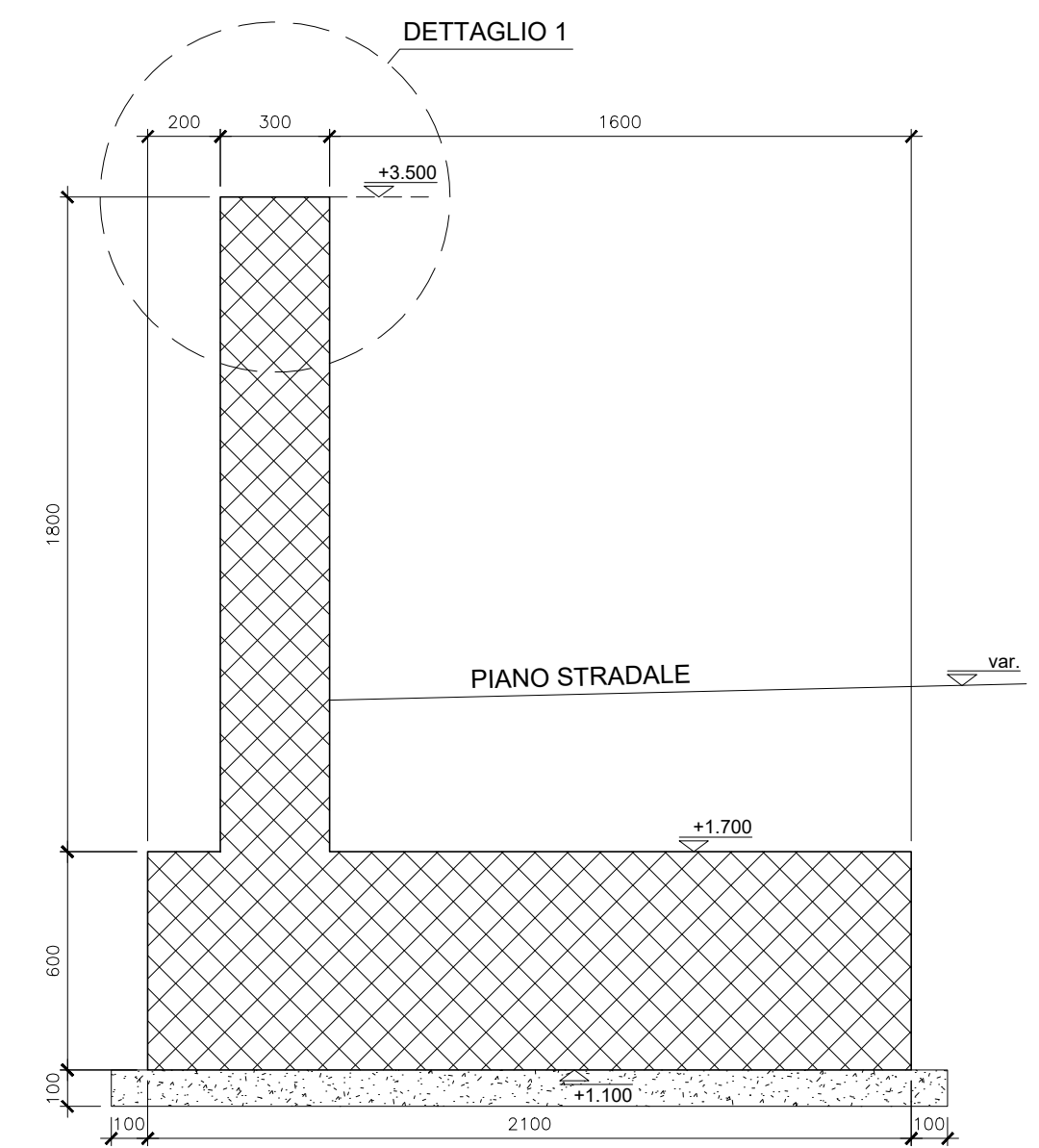
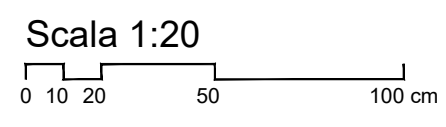
**DETTAGLIO 1**



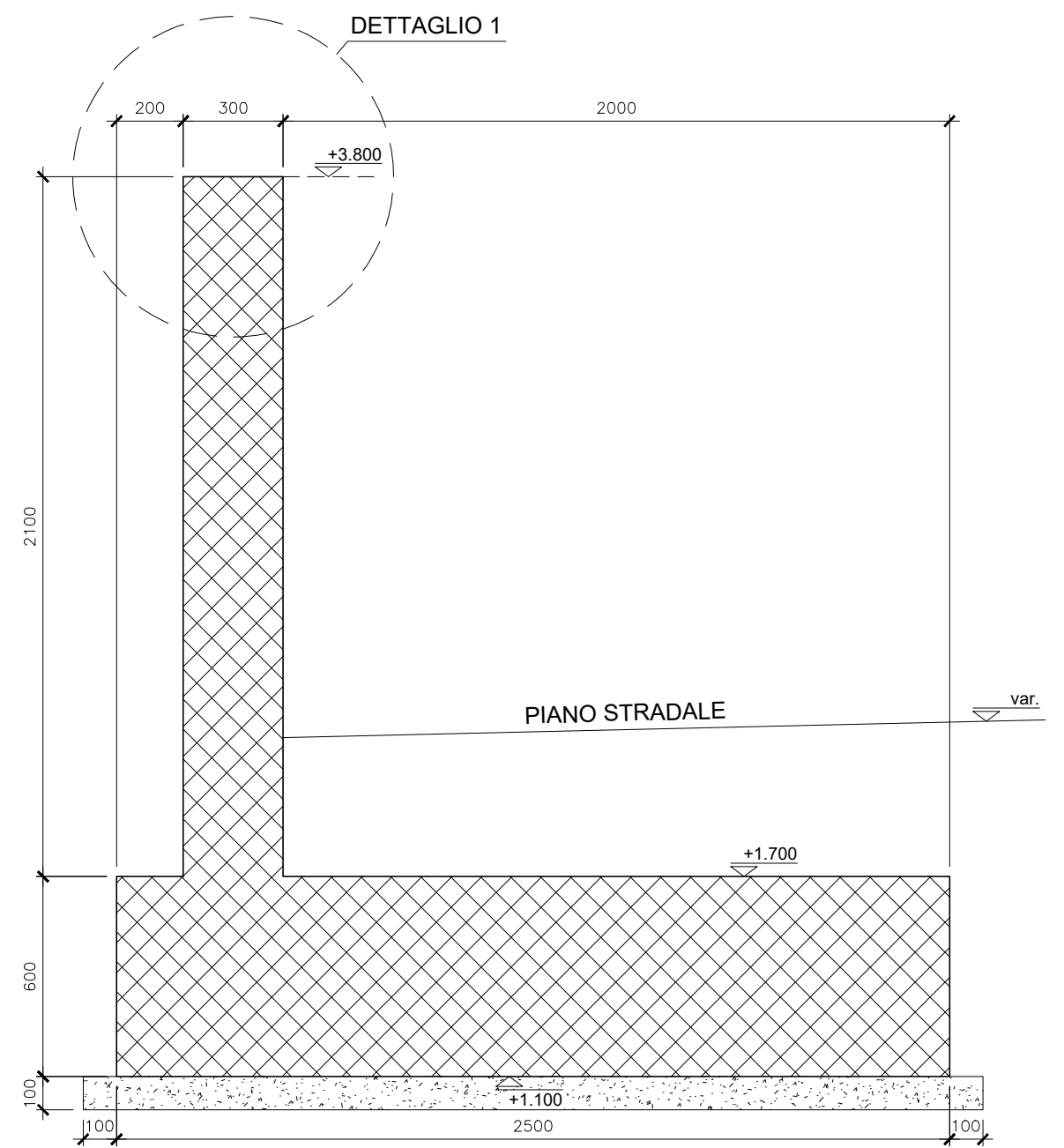
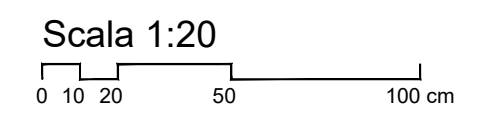
**SEZIONE SETTO H=1.5m**



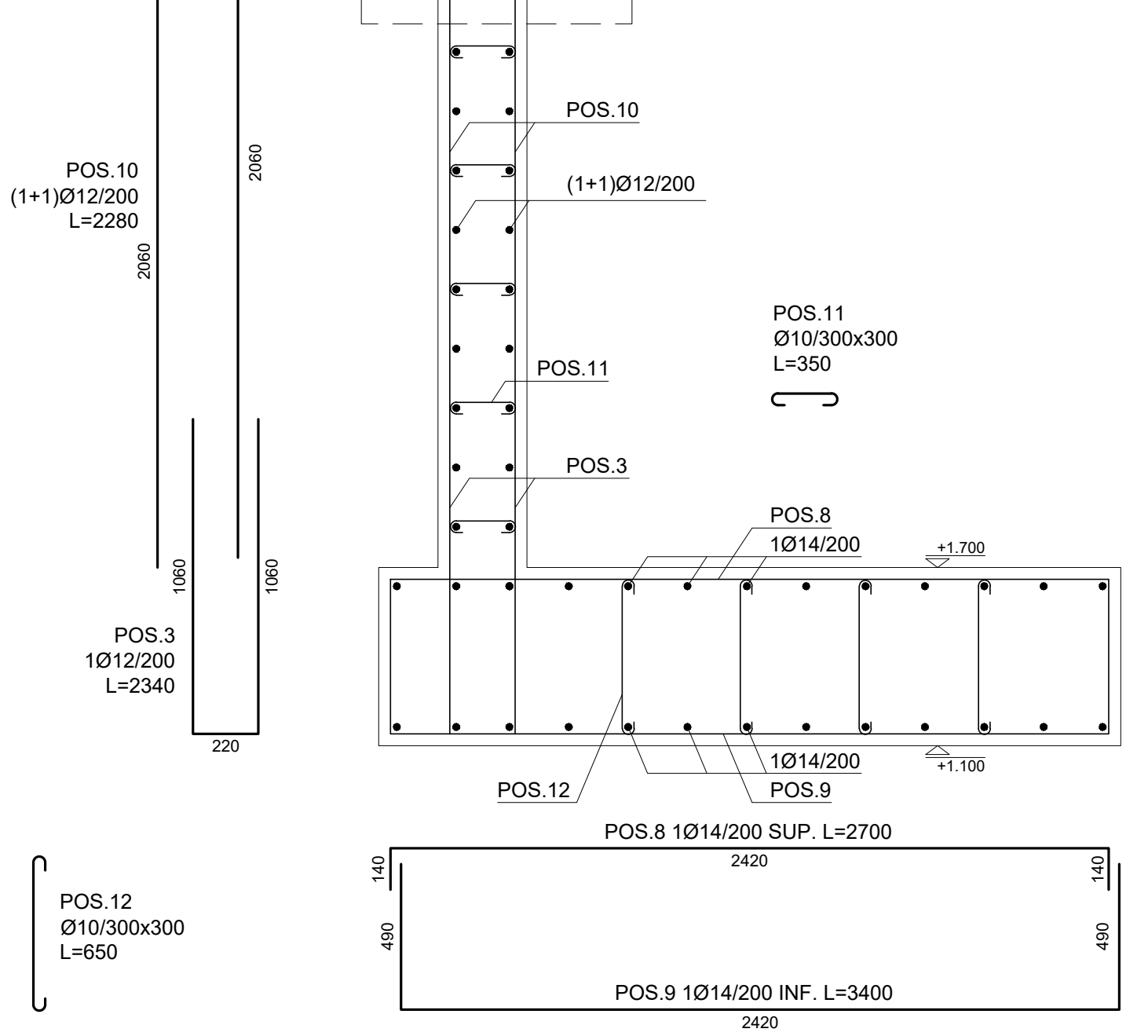
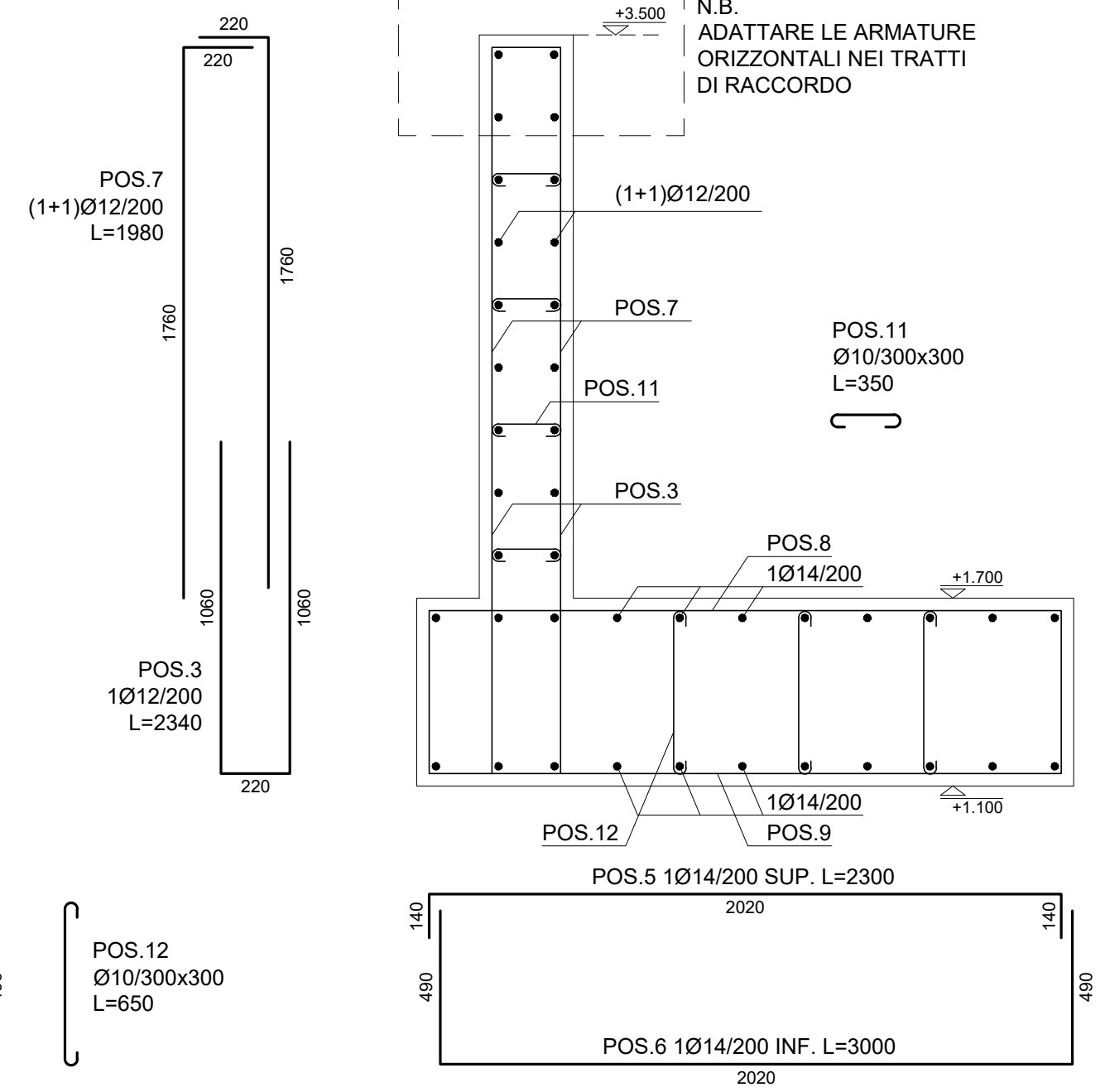
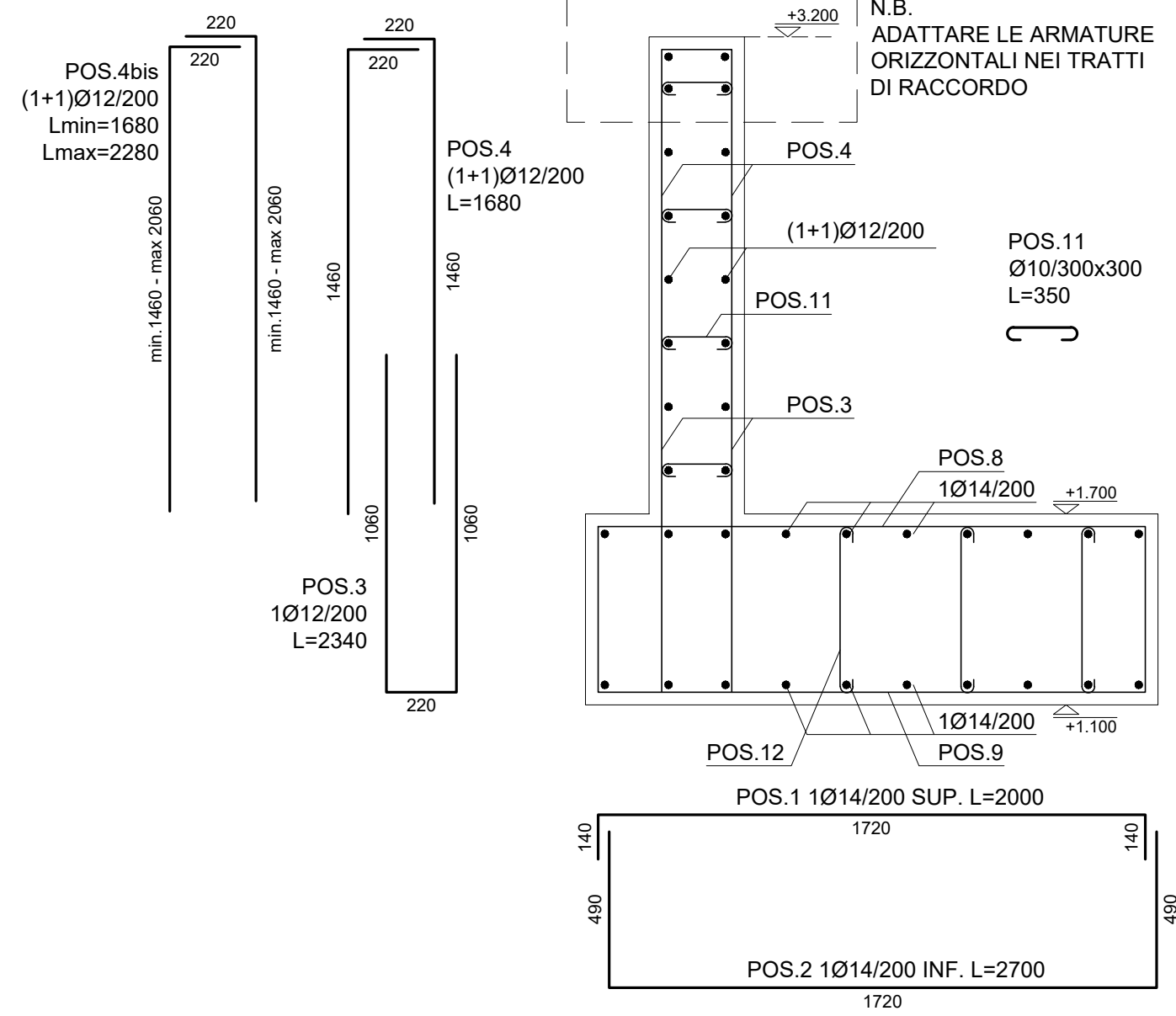
**SEZIONE SETTO H=1.8m**



**SEZIONE SETTO H=2.1m**



**ARMATURE NEI TRATTI DI RACCORDO**  
H=1.5-1.8m E H=1.5-2.1m



**Comune di Messina**

IMPRESA APPALTRICE  
**CO.ED.MAR.**

30015 Chioggia (VE)  
Barchina F - Val da Rio  
www.coedmar.it

Tel. +39 041 4967 925  
Fax +39 041 4967 914  
contratti@coedmar.it

COOPTATA  
**CONSORCIO INTEGRATA**

40132 Bologna  
Via M. E. Lepido, 18/22  
www.consortiointegra.it

Tel. +39 051 3161 300  
integra@consortiointegra.it

PROGETTAZIONE  
**F&M**  
Ingegneria

30035 Mirano (VE)  
Viale Belvedere, 8/10  
www.fm-ingegneria.com

Tel. +39 041 5785 711  
Fax +39 041 4355 933  
tremestieri@fm-ingegneria.com

**IDROTEC**

20148 Milano  
Via Cacciadeperi, 27

Tel. +39 02 8942 2685  
Fax +39 02 8942 5133  
mail@idrotec-ingegneria.it

Ing. Vincenzo Iacopino  
Studio Tecnico Falzea  
Arch. Claudio Lucchesi  
Ing. Manlio Marino  
Dott. Geol. Sergio Dolfin

Viale Regina Elena, 125 - Messina  
Via 1° Settembre, 37 - Messina  
Via Roma, 117 - Pace del Mela (ME)  
Via Piazza, 6 - Messina  
Via Marina, 4 - Torre Faro (ME)

PROGETTO  
**COMUNE DI MESSINA**  
**LAVORI DI COSTRUZIONE DELLA PIATTAFORMA**  
**LOGISTICA INTERMODALE TREMESTIERI CON ANNESSO**  
**SCALO PORTUALE - PRIMO STRALCIO FUNZIONALE**

EMISSIONE  
**PROGETTO ESECUTIVO**

TITOLO  
H - VIABILITA' E PIAZZALI  
Muro perimetrale - Armature

REV.	DATA	FILE	OGGETTO	DIS.	APPR.
1					
2					
3					
4					
5					

ELABORATO N. **H201**

DATA:	SCALA:	FILE:	J.N.
10 ottobre 2017	1:20 - 1:10	1044_H201_0.dwg	1044

PROGETTO	DISEGNO	VERIFICA	APPROVAZIONE
L. Masiero	I. Cagnin	L. Masiero	T. Tassi