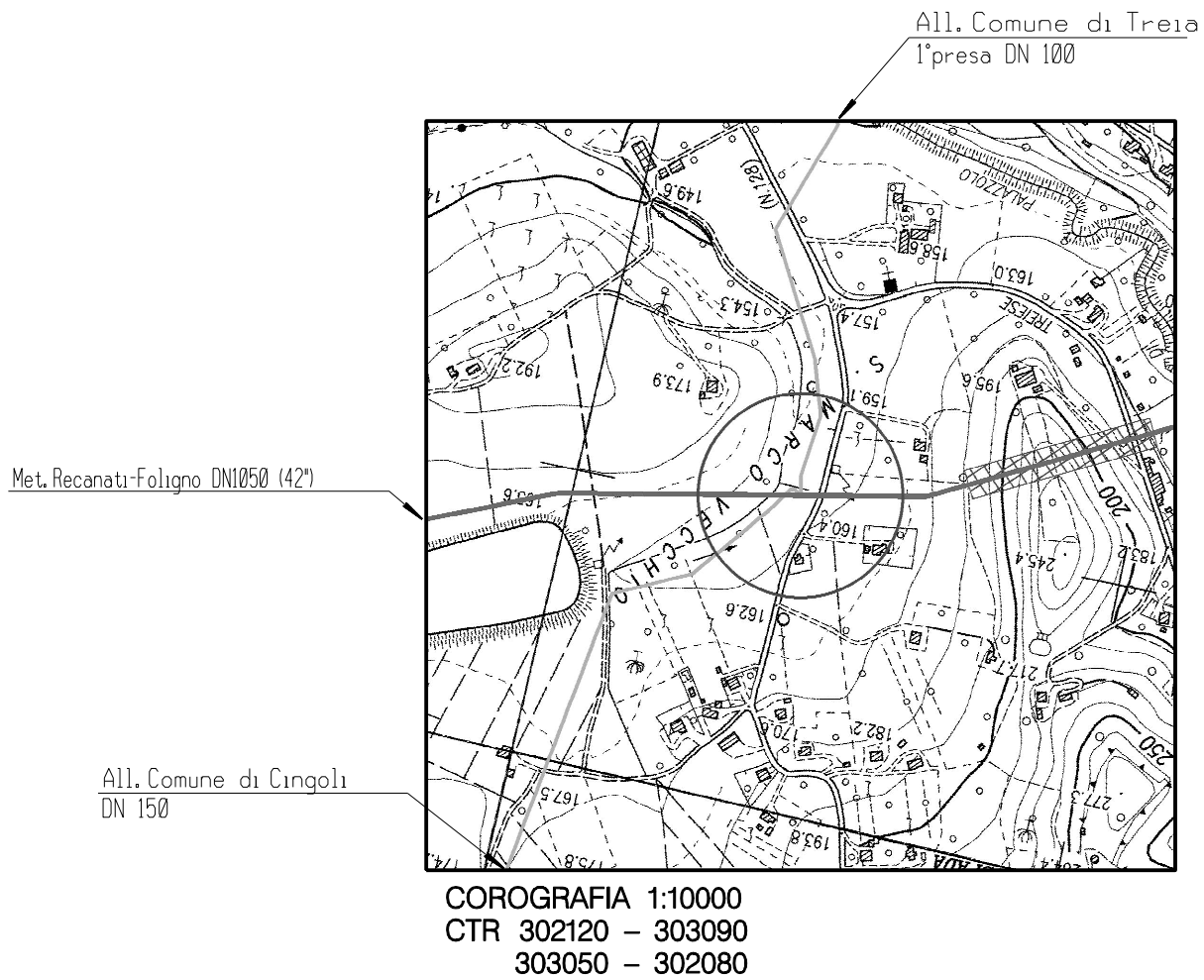
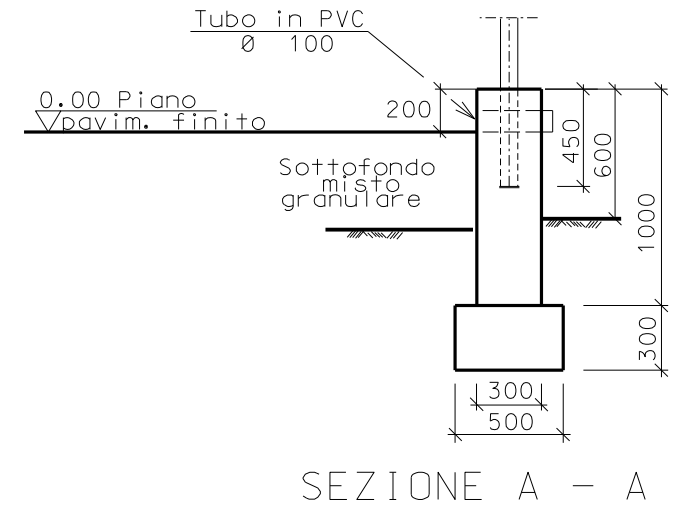
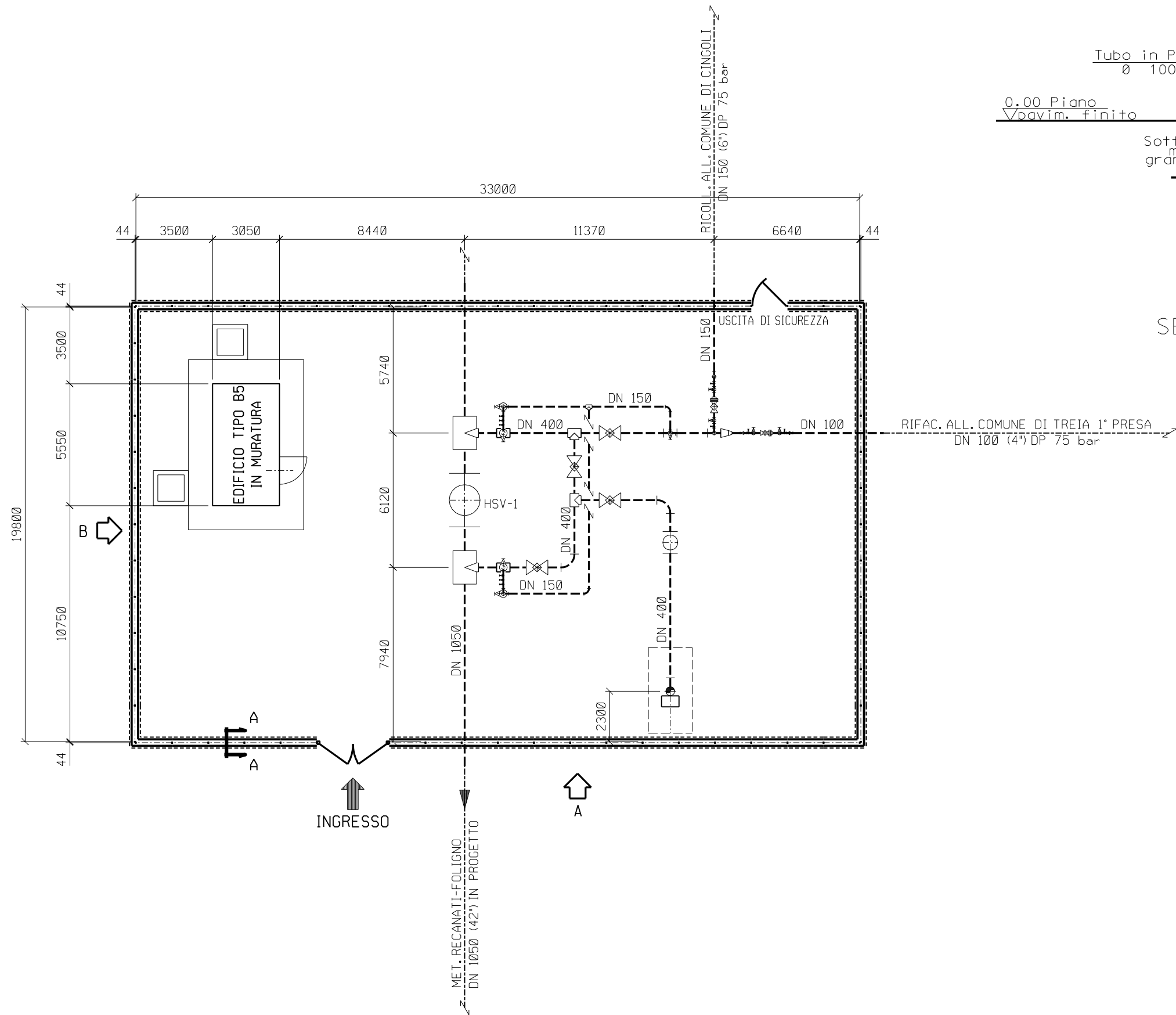


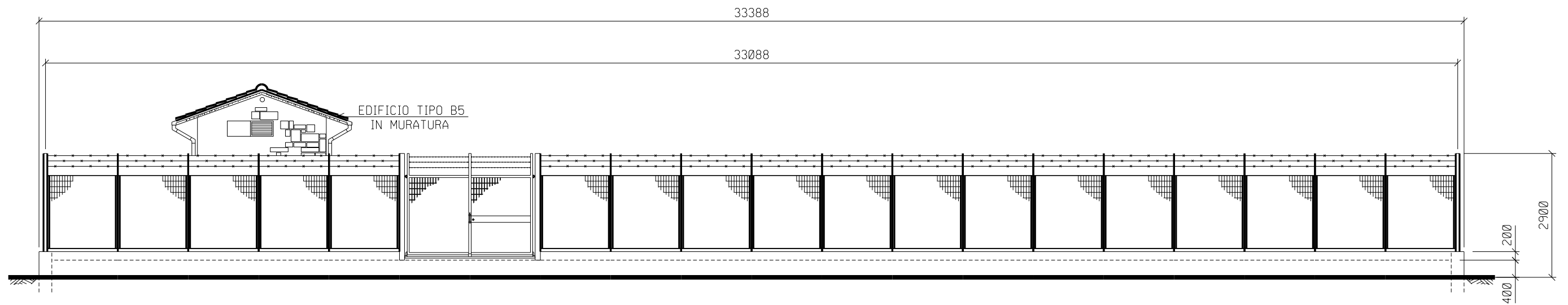
DOCUMENTI DI RIFERIMENTO	N.



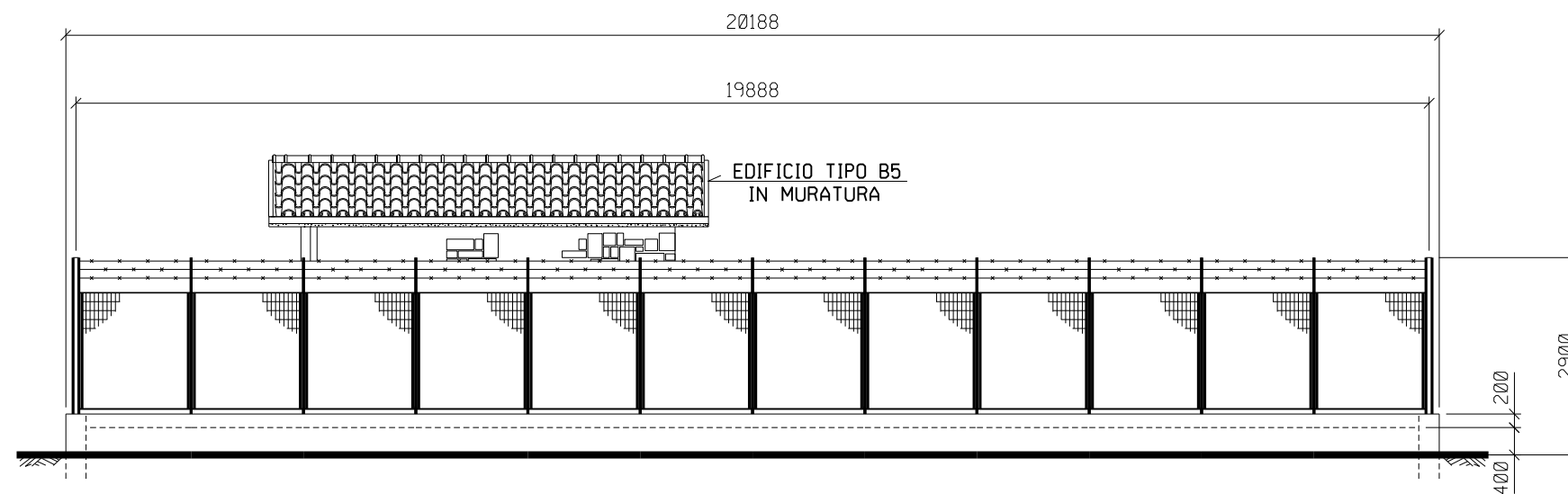
1	SET '11	AGGIORNAMENTO	MONTINI	CANI	SABBATINI
0	MAG '10	EMISSIONE	LUCARELLI	BOCCI	BIZZARRI
Rev.	DATA	DESCRIZIONE	ELABORATO	VERIFICATO	APPROVATO
 snam rete gas		PROGETTISTA	 saipem		WBS NR/09157 COD. TEC. COMMESSA SAIPEM 022022
Metanodotto: RECANATI-FOLIGNO DN 1050 (42"), DP 75 bar			DIS. N. LC-D-83363		
			REVISIONE 1		
PUNTO DI INTERCETTAZIONE DI DERIVAZIONE IMPORTANTE (PIDI) n.3 Loc. S. MARCO VECCHIO			FG. 1	DI 3	
			SCALA		



PIANTA SCALA 1:200



PROSPETTO "A" 1:100



PROSPETTO "B" 1:100