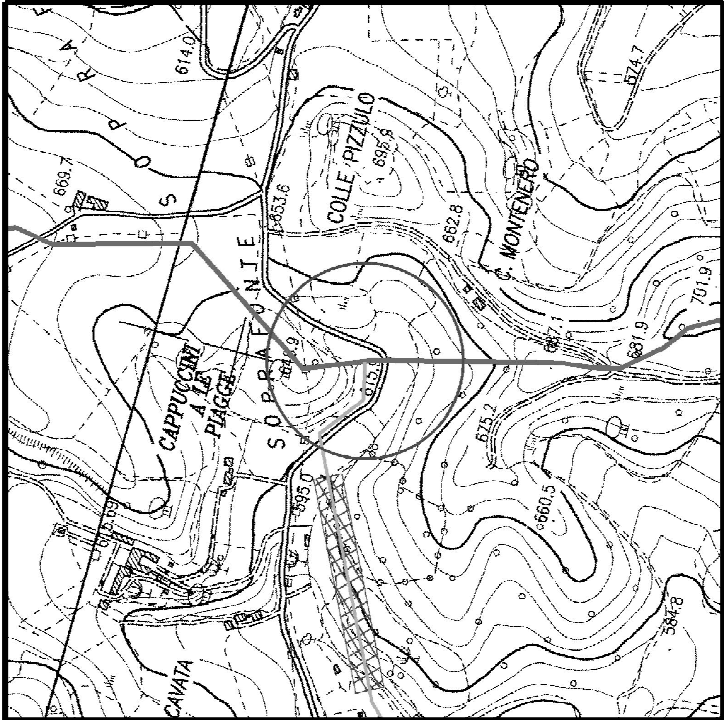




DOCUMENTI DI RIFERIMENTO	N.

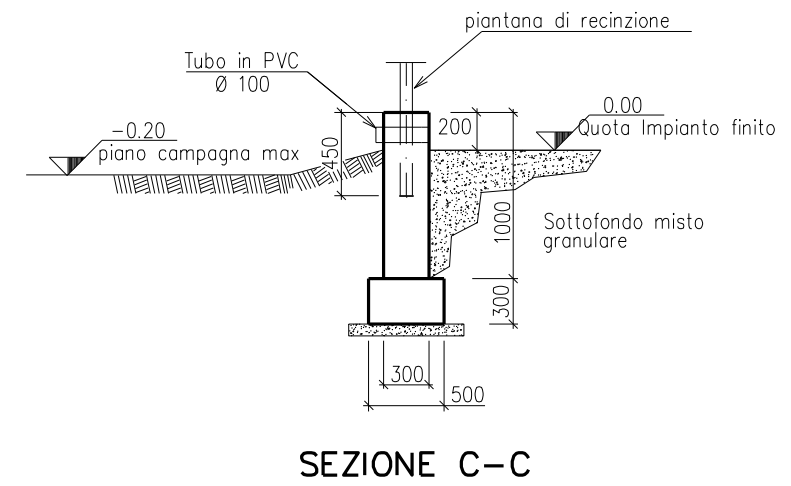
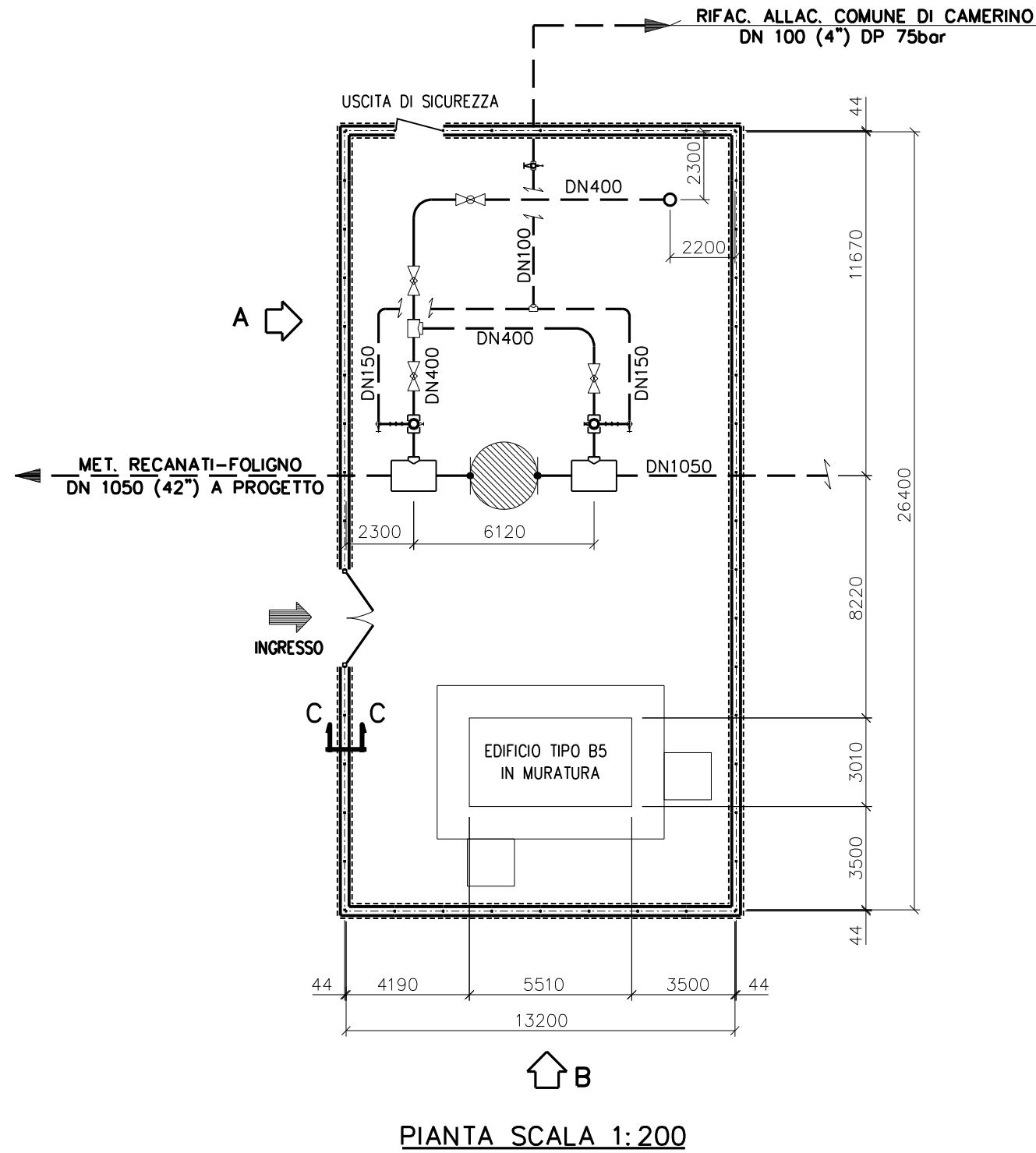


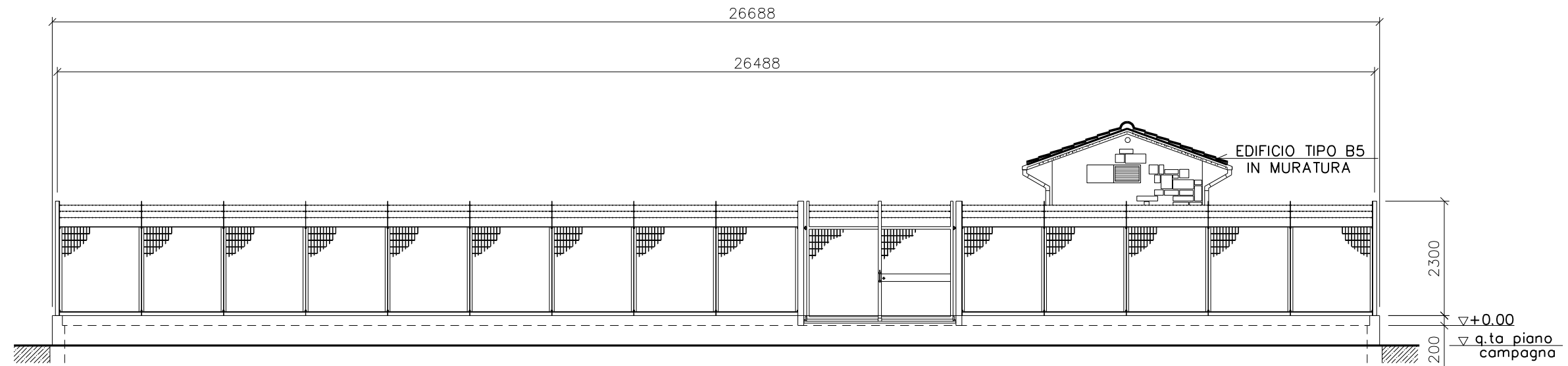
COROGRAFIA 1:10000
CTR 313060 – 313020

All. Comune di Camerino
DN 100

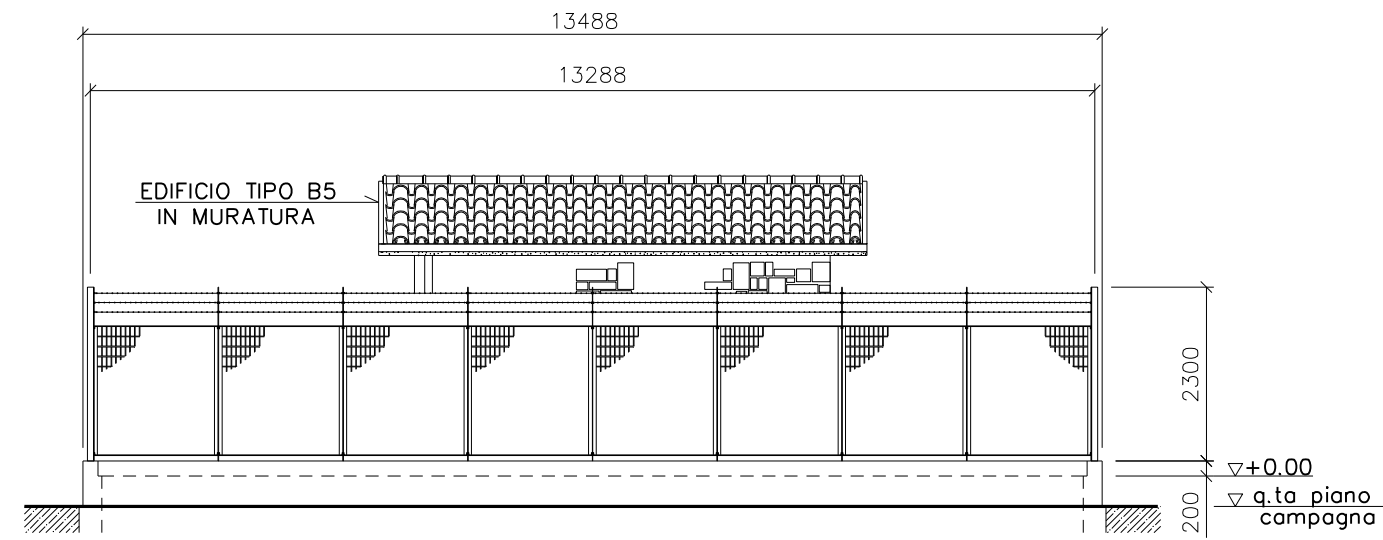
Met. Recanati-Foligno
DN1050 (42")

1	SET.2011	AGGIORNAMENTO	MONTINI	CANI	SABBATINI
0	MAG.2010	EMISSIONE	LUCCARELLI	BOCCI	BIZZARRI
Rev.	DATA	DESCRIZIONE	ELABORATO	VERIFICATO	APPROVATO
CLIENTE  snam rete gas		PROGETTISTA  Saipem	WBS CLIENTE NR/09157 COD.TEC. COMMESSA SAIPEM 022022	UNITA' 40	
Metanodotto: RECANATI-FOLIGNO DN 1050 (42"), DP 75 bar			DISEGNO LC-D-83368		
PUNTO DI INTERCETTAZIONE DI DERIVAZIONE IMPORTANTE (PIDI) n.8 Loc. CAPPUCCINI			REVISIONE 1		
Loc. CAPPUCCINI			FG. 1	DI 3	SCALA





PROSPETTO "A" 1:100



PROSPETTO "B" 1:100