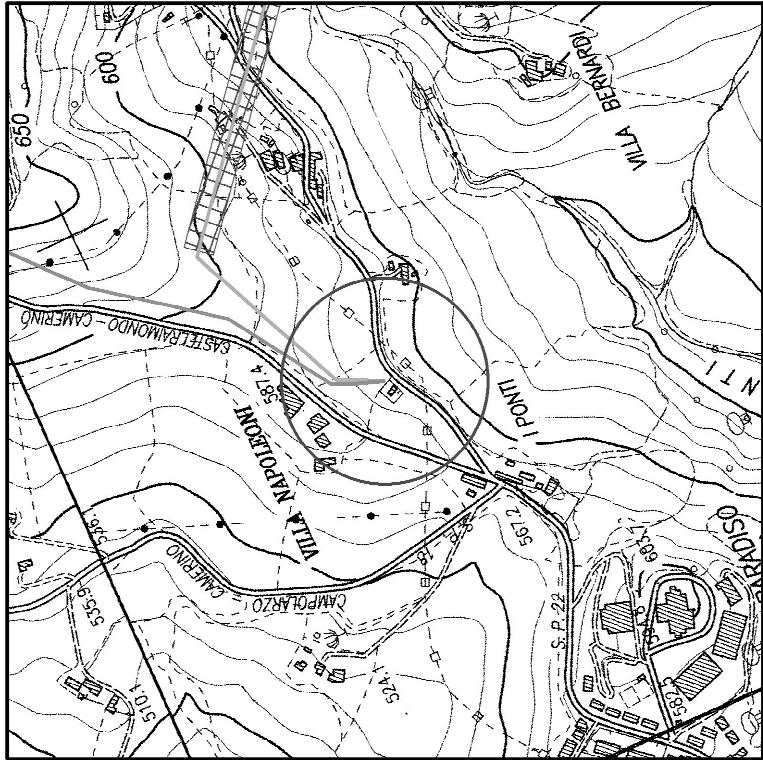


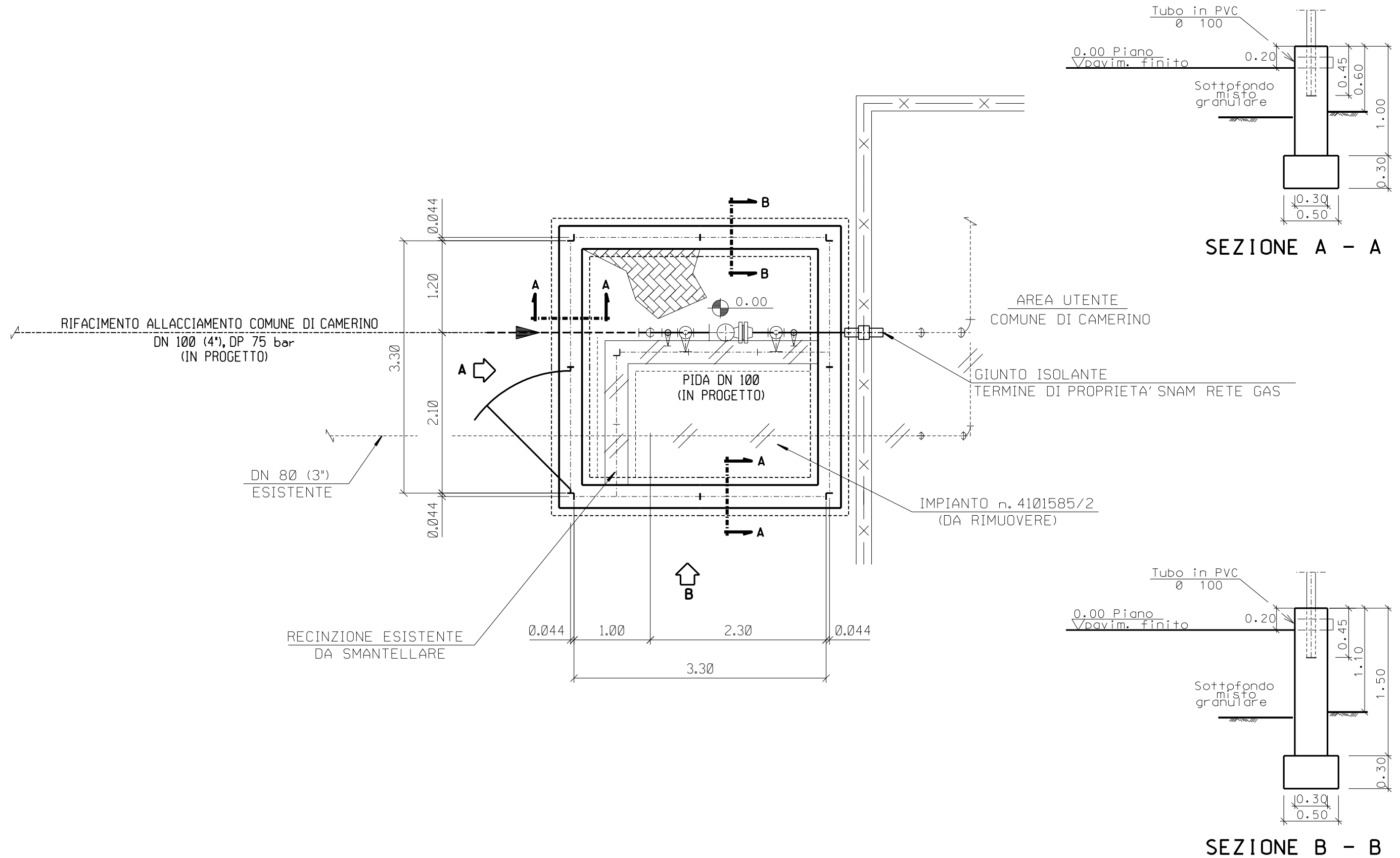


DOCUMENTI DI RIFERIMENTO	N.

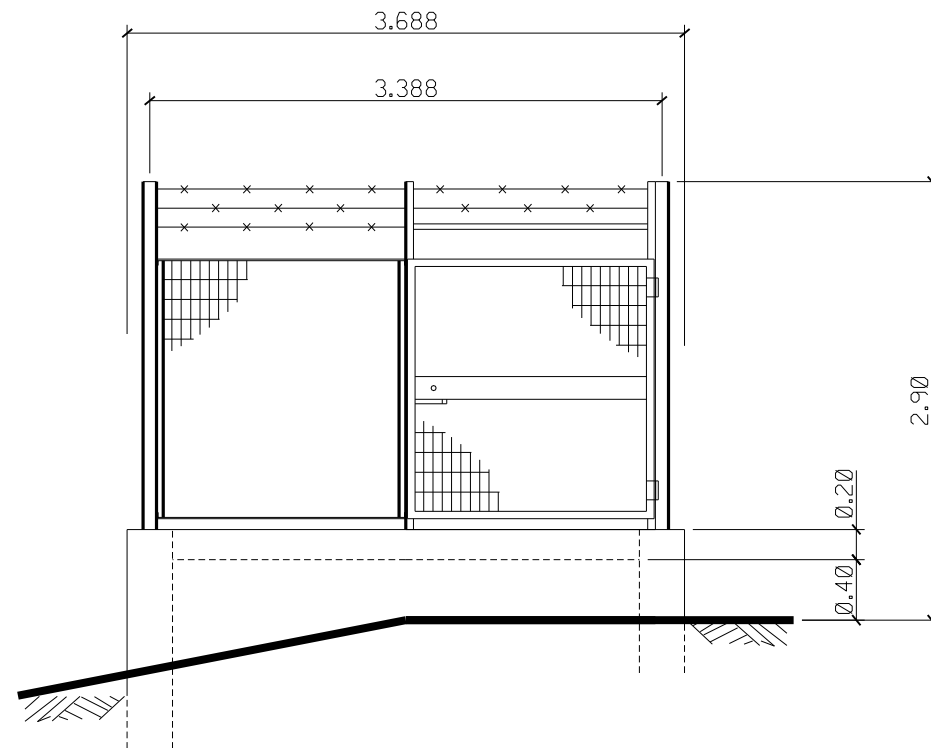


COROGRAFIA 1:10000  
CTR 313060 - 313020 - 313050

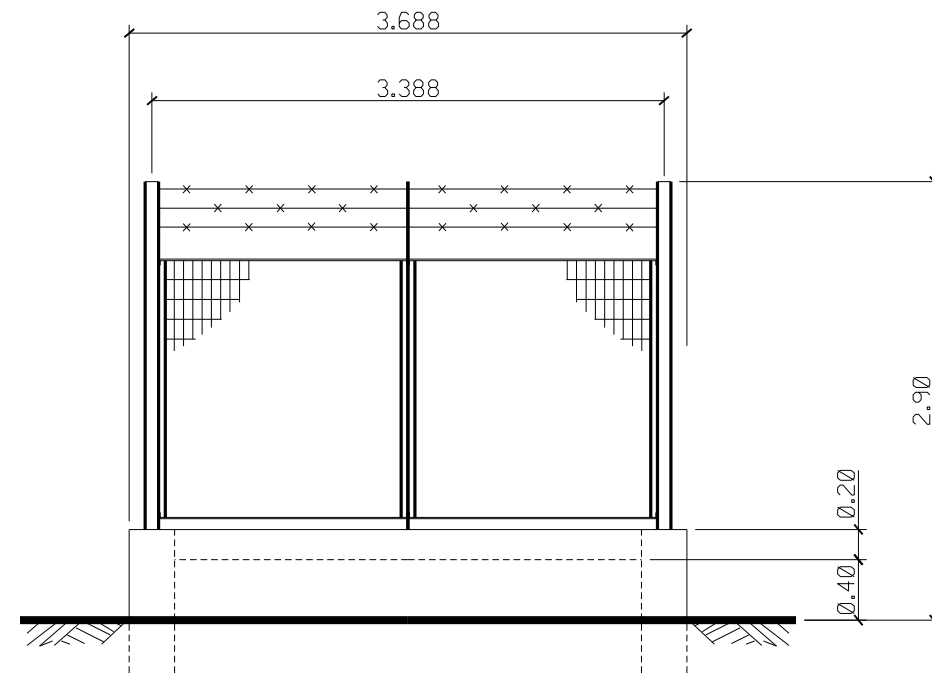
1	SET '11	AGGIORNAMENTO	MONTINI	CANI	SABBATINI
0	APR '10	EMISSIONE	MONTINI	BIZZARRI	SABBATINI
Rev.	DATA	DESCRIZIONE	ELABORATO	VERIFICATO	APPROVATO
 <b>snam rete gas</b>		PROGETTISTA	 <b>saipem</b>		WBS NR/09157 COD. TEC. R-L13 <b>COMMESSA SAIPEM            022022</b>
<b>Metanodotto:            RIFACIMENTO ALLACCIAMENTO COMUNE DI CAMERINO</b> DN 100 (4"), DP 75 bar			DIS. N. <b>LC-D-83387</b>		
			REVISIONE <b>1</b>		
PUNTO DI INTERCETTAZIONE CON DISCAGGIO DI ALLACCIAMENTO Loc. "Villa Napoleoni"			FG. <b>1</b>	DI <b>3</b>	UNITA' N°. <b>240</b>
			SCALA		



SCALA 1:50



PROSPETTO A



PROSPETTO B

SCALA 1:50