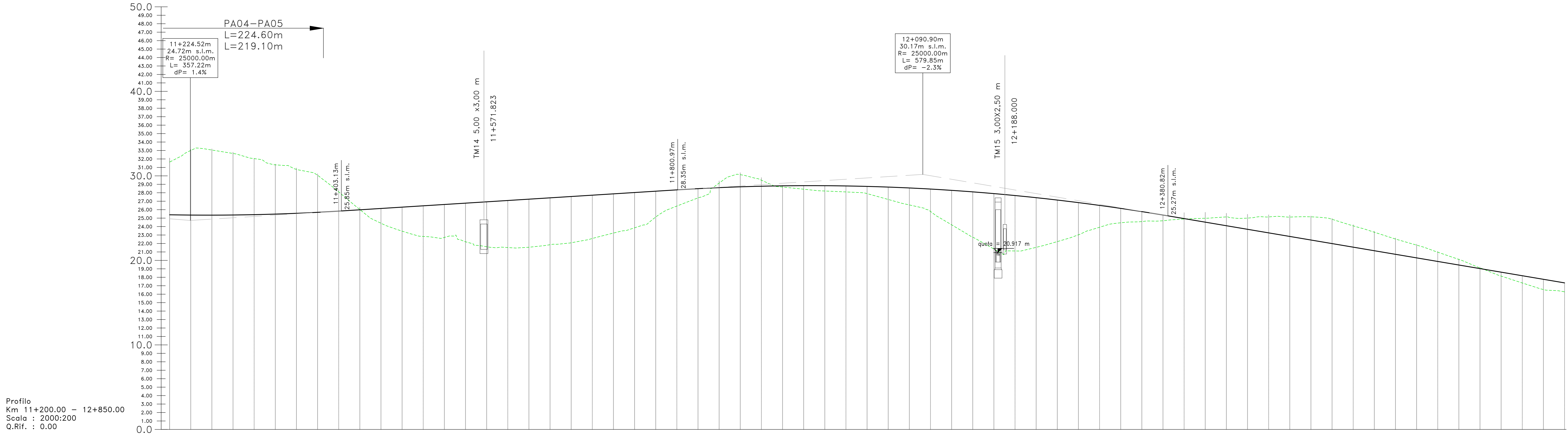
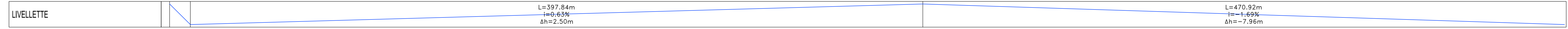
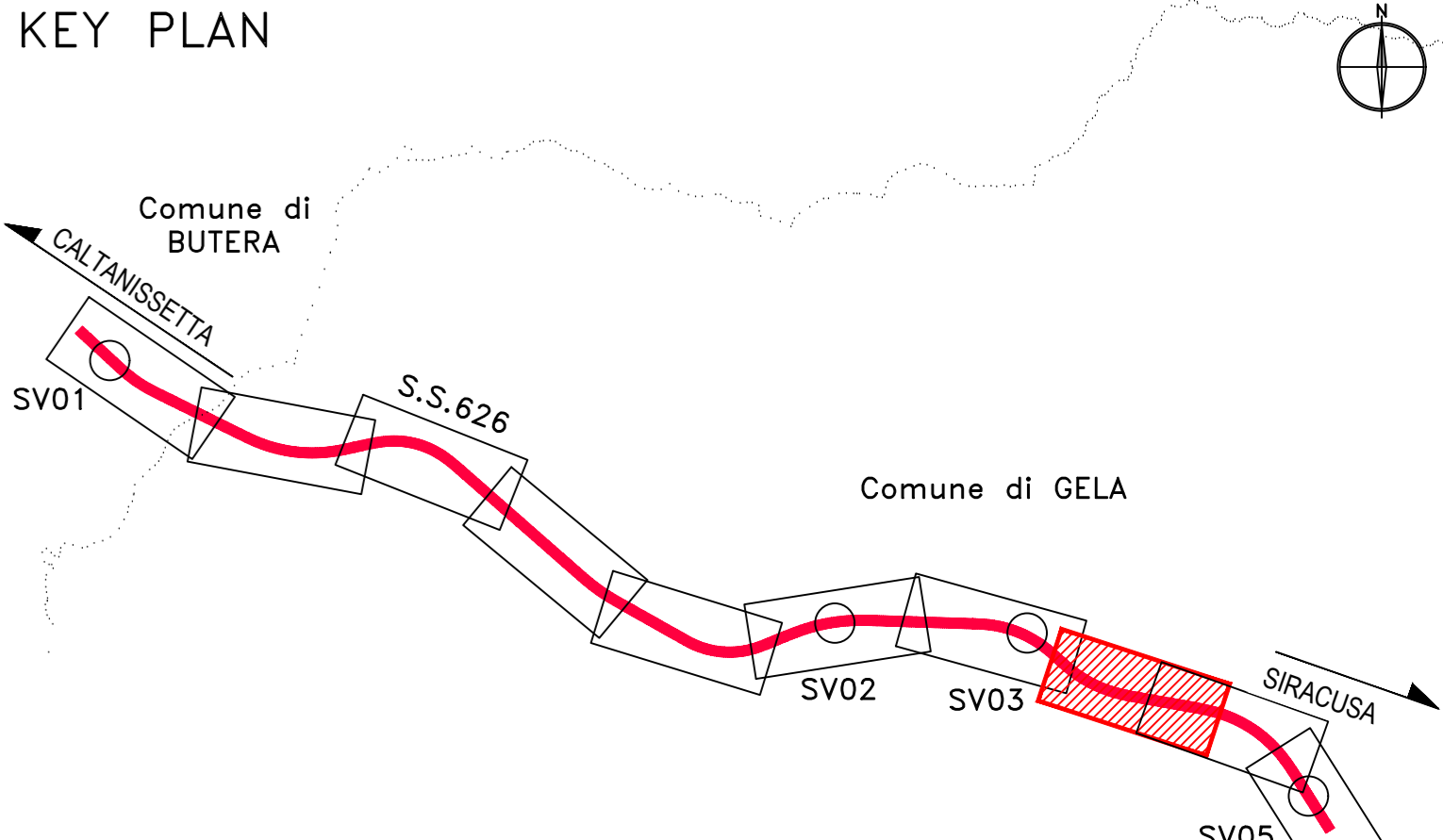
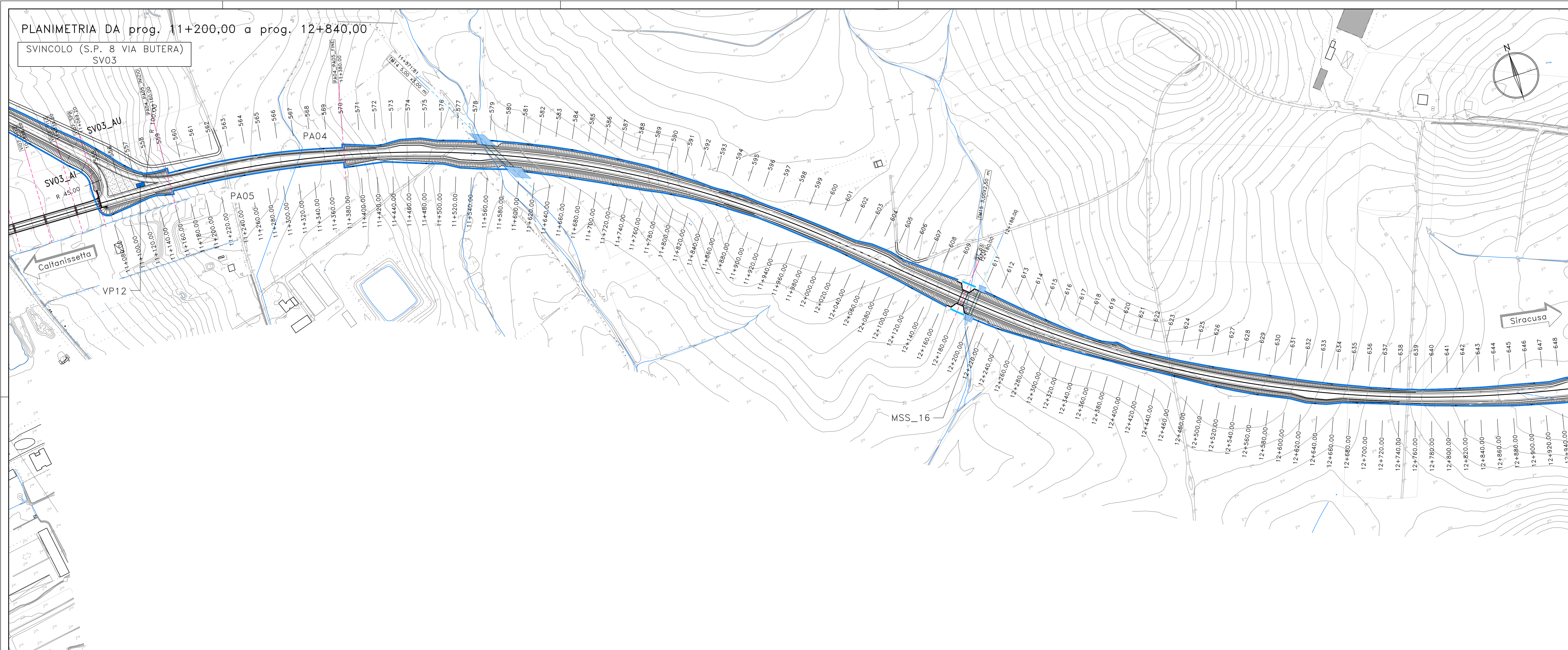


PLANIMETRIA DA prog. 11+200,00 a prog. 12+840,00

SVINCOLO (S.P. 8 VIA BUTERA) SV03



NUMERO SEZIONE	DISTANZE PARZIALI	DISTANZE PROGRESSIVE	QUOTE PROGETTO	QUOTE TERRENO	DIFFERENZA QUOTE	ANDAMENTO PLANIMETRICO	ANDAMENTO CIGLI	ETTOMETRICHE
561	20,0	20,0	26,39	26,39	-6,24	<p>Planimetric profile showing curves with lengths (L) and radii (R):</p> <ul style="list-style-type: none"> L=736,20m, R=1250,00m L=147,92m, R=430,00m L=157,79m, R=470,00m L=560,44m, R=1400,00m L=301,79m, R=650,00m 		
562	20,0	40,0	25,37	25,37	-7,40			
563	20,0	60,0	25,35	25,35	-7,87			
564	20,0	80,0	25,36	25,36	-7,54			
565	20,0	100,0	25,36	25,36	-7,18			
566	20,0	120,0	25,41	25,41	-6,63			
567	20,0	140,0	25,46	25,46	-5,93			
568	20,0	160,0	25,53	25,53	-5,70			
569	20,0	180,0	25,61	25,61	-4,95			
570	20,0	200,0	25,71	25,71	-3,97			
571	20,0	220,0	25,85	25,85	-2,98			
572	20,0	240,0	25,95	25,95	-0,47			
573	20,0	260,0	26,06	26,06	-1,20			
574	20,0	280,0	26,20	26,20	-2,23			
575	20,0	300,0	26,35	26,35	-3,03			
576	20,0	320,0	26,46	26,46	-3,62			
577	20,0	340,0	26,58	26,58	-3,97			
578	20,0	360,0	26,71	26,71	-4,03			
579	20,0	380,0	26,83	26,83	-5,04			
580	20,0	400,0	26,96	26,96	-5,42			
581	20,0	420,0	27,08	27,08	-5,56			
582	20,0	440,0	27,21	27,21	-5,69			
583	20,0	460,0	27,34	27,34	-5,62			
584	20,0	480,0	27,46	27,46	-5,54			
585	20,0	500,0	27,59	27,59	-5,41			
586	20,0	520,0	27,71	27,71	-5,12			
587	20,0	540,0	27,84	27,84	-4,73			
588	20,0	560,0	27,97	27,97	-4,43			
589	20,0	580,0	28,11	28,11	-3,91			
590	20,0	600,0	28,22	28,22	-2,73			
591	20,0	620,0	28,34	28,34	-1,91			
592	20,0	640,0	28,46	28,46	-1,26			
593	20,0	660,0	28,56	28,56	-0,08			
594	20,0	680,0	28,65	28,65	-1,20			
595	20,0	700,0	28,72	28,72	-1,34			
596	20,0	720,0	28,78	28,78	-0,71			
597	20,0	740,0	28,81	28,81	-0,10			
598	20,0	760,0	28,84	28,84	0,31			
599	20,0	780,0	28,84	28,84	0,53			
600	20,0	800,0	28,83	28,83	0,65			
601	20,0	820,0	28,81	28,81	0,71			
602	20,0	840,0	28,77	28,77	0,77			
603	20,0	860,0	28,71	28,71	1,22			
604	20,0	880,0	28,64	28,64	1,71			
605	20,0	900,0	28,55	28,55	2,10			
606	20,0	920,0	28,44	28,44	2,65			
607	20,0	940,0	28,32	28,32	3,82			
608	20,0	960,0	28,19	28,19	4,86			
609	20,0	980,0	28,06	28,06	5,83			
610	20,0	1000,0	27,86	27,86	6,80			
611	20,0	1020,0	27,67	27,67	6,56			
612	20,0	1040,0	27,47	27,47	6,05			
613	20,0	1060,0	27,25	27,25	5,32			
614	20,0	1080,0	27,02	27,02	4,51			
615	20,0	1100,0	26,77	26,77	3,53			
616	20,0	1120,0	26,51	26,51	2,59			
617	20,0	1140,0	26,22	26,22	1,83			
618	20,0	1160,0	25,93	25,93	1,38			
619	20,0	1180,0	25,61	25,61	0,96			
620	20,0	1200,0	25,28	25,28	0,54			
621	20,0	1220,0	24,95	24,95	0,06			
622	20,0	1240,0	24,61	24,61	-0,36			
623	20,0	1260,0	24,27	24,27	-0,81			
624	20,0	1280,0	23,93	23,93	-1,07			
625	20,0	1300,0	23,59	23,59	-1,45			
626	20,0	1320,0	23,25	23,25	-1,89			
627	20,0	1340,0	22,92	22,92	-2,23			
628	20,0	1360,0	22,58	22,58	-2,59			
629	20,0	1380,0	22,24	22,24	-2,86			
630	20,0	1400,0	21,90	21,90	-2,80			
631	20,0	1420,0	21,56	21,56	-2,92			
632	20,0	1440,0	21,22	21,22	-2,27			
633	20,0	1460,0	20,89	20,89	-1,96			
634	20,0	1480,0	20,55	20,55	-1,69			
635	20,0	1500,0	20,21	20,21	-1,45			
636	20,0	1520,0	19,87	19,87	-1,10			
637	20,0	1540,0	19,54	19,54	-0,75			
638	20,0	1560,0	19,20	19,20	-0,32			
639	20,0	1580,0	18,86	18,86	0,14			
640	20,0	1600,0	18,52	18,52	0,54			
641	20,0	1620,0	18,18	18,18	0,86			
642	20,0	1640,0	17,85	17,85	1,16			
643	20,0	1660,0	17,51	17,51	1,48			
644	20,0	1680,0	17,17	17,17	1,81			
645	20,0	1700,0	16,83	16,83	2,15			
646	20,0	1720,0	16,49	16,49	2,50			
647	20,0	1740,0	16,15	16,15	2,85			
648	20,0	1760,0	15,81	15,81	3,20			
649	20,0	1780,0	15,47	15,47	3,55			
650	20,0	1800,0	15,13	15,13	3,90			

S.S. n.626 della "Valle del Salso"
Lotti 7 e 8 e completamento della Tangenziale di Gela
Itinerario Gela - Agrigento - Castelvetro

PROGETTO DEFINITIVO cod. PA83

PROGETTAZIONE: ANAS - DIREZIONE PROGETTAZIONE E REALIZZAZIONE LAVORI

PROGETTISTA:
Responsabile: Ingegnere specialista Dott. Ing. Giovanni Pizzol
Responsabile Progetto: Dott. Ing. Massimo Capasso
Responsabile Grafico: Dott. Ing. Sergio Di Majo
Responsabile Ambientale e SVI: Dott. Ing. Francesco Venturoli

COORDINATORE SICUREZZA IN FASE DI PROGETTAZIONE:
Dott. Ing. Sergio Di Majo

VEDI: IL RESPONSABILE DEL PROCEDIMENTO
Dott. Ing. Maria Capasso

GRUPPO DI PROGETTAZIONE

PROGETTO STRADALE
ASSE PRINCIPALE
PLANIMETRIA E PROFILO DI PROGETTO
Tavola 8 di 10

CODICE PROGETTO	NOME FILE	REVISIONE	SCALA:
PROGETTO: DP83PA083	PROG. ANNO: 19		1:2000/200
ELAB.: POOPSIOITRAIPFO8			

REV.	DESCRIZIONE	DATA	REDAUTO	VERIFICATO	APPROVATO
A	EMISSIONE	FEB. 2020	M.TOSI	M.CAPASSO	IL PAZZA