

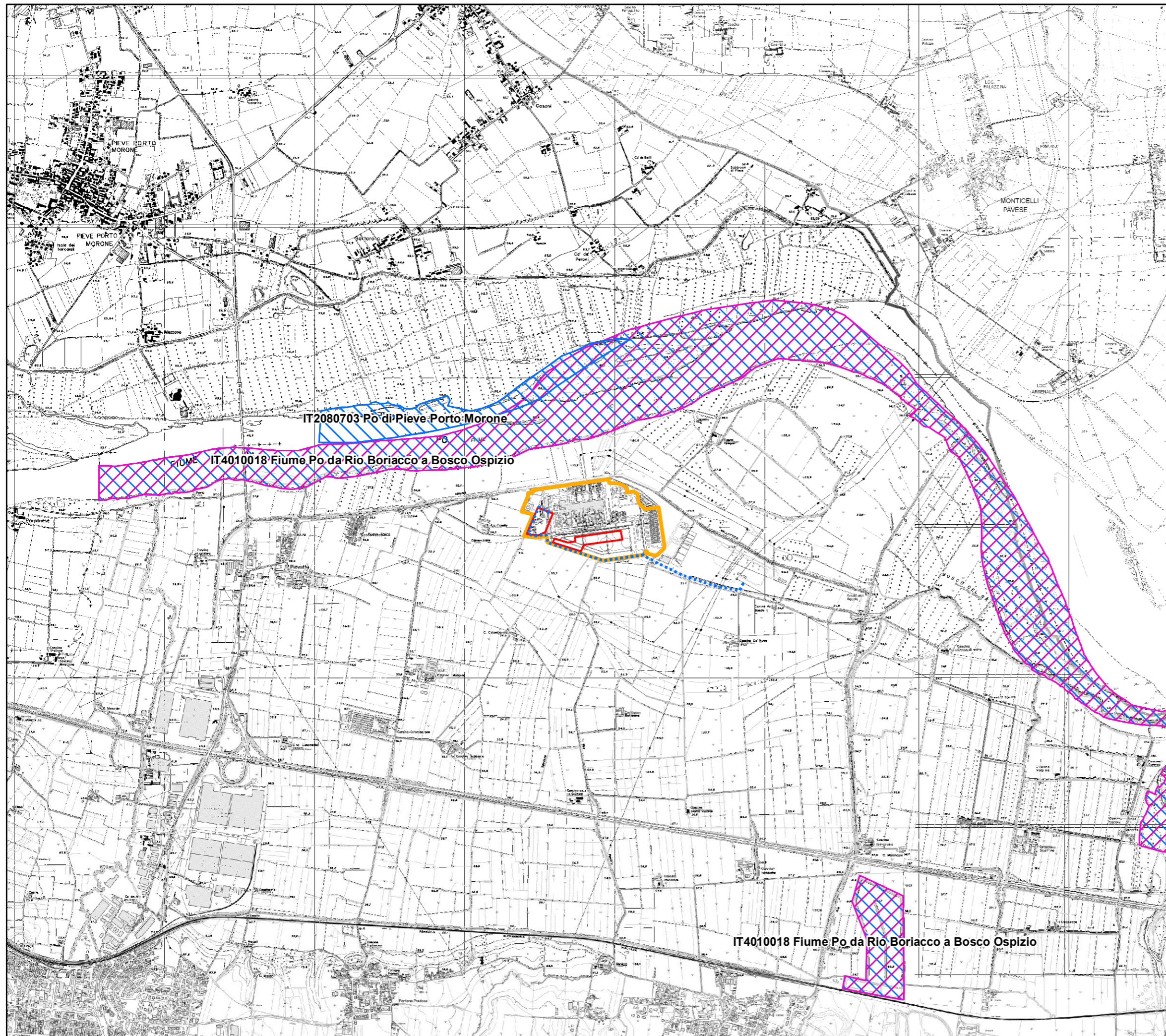


Centrale Termoelettrica "Eduardo Amaldi" di La Casella  
Installazione di una nuova unit  a gas




STUDIO DI IMPATTO AMBIENTALE  
Tavola 2.7.1

Aree Protette e/o tutelate



Scala: 1:25000



**Legenda**

-  Perimetrazione di Centrale
-  Aree di intervento
-  Nuovo elettrodotto in cavo interrato

**Rete Natura 2000** \*

-  Zona di Protezione Speciale (ZPS)
-  Zona Speciale di Conservazione (ZSC)



Sistema di riferimento: WGS84 - UTM fuso 32 nord