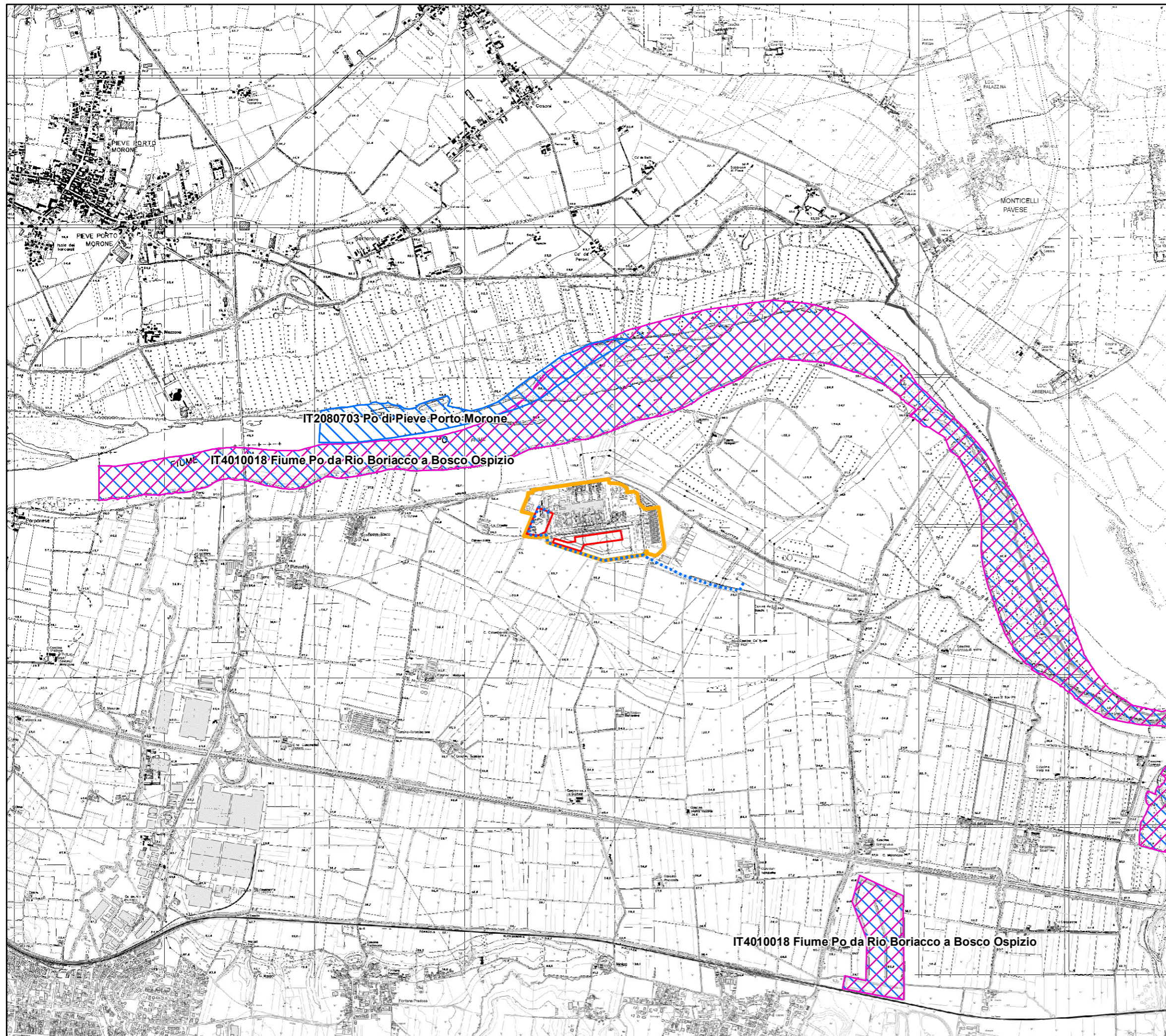









Centrale Termoelettrica "Eduardo Amaldi" di La Casella
Installazione di una nuova unit  a gas

RELAZIONE PAESAGGISTICA
Tavola 4
Aree Protette e/o tutelate

Scala: 1:25000



Legenda

-  Perimetrazione di Centrale
-  Aree di intervento
-  Nuovo elettrodotto in cavo interrato
- Rete Natura 2000* *
-  Zona di Protezione Speciale (ZPS)
-  Zona Speciale di Conservazione (ZSC)

