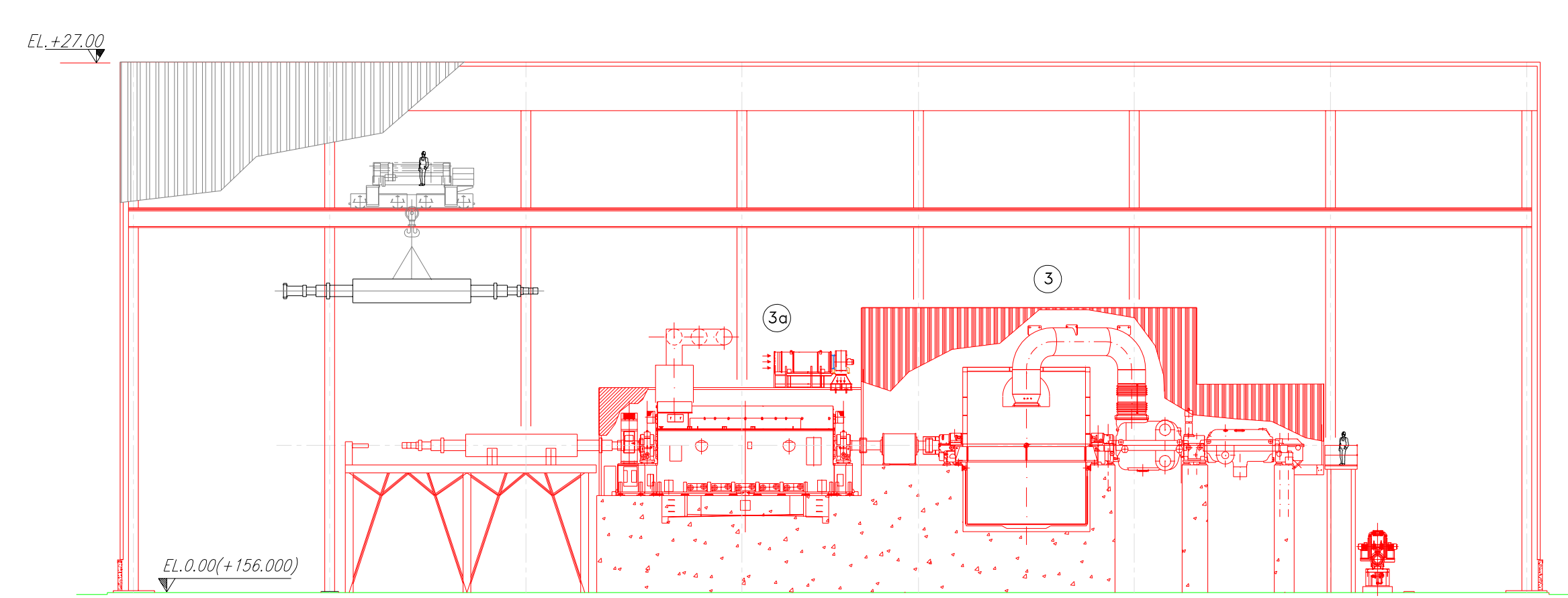
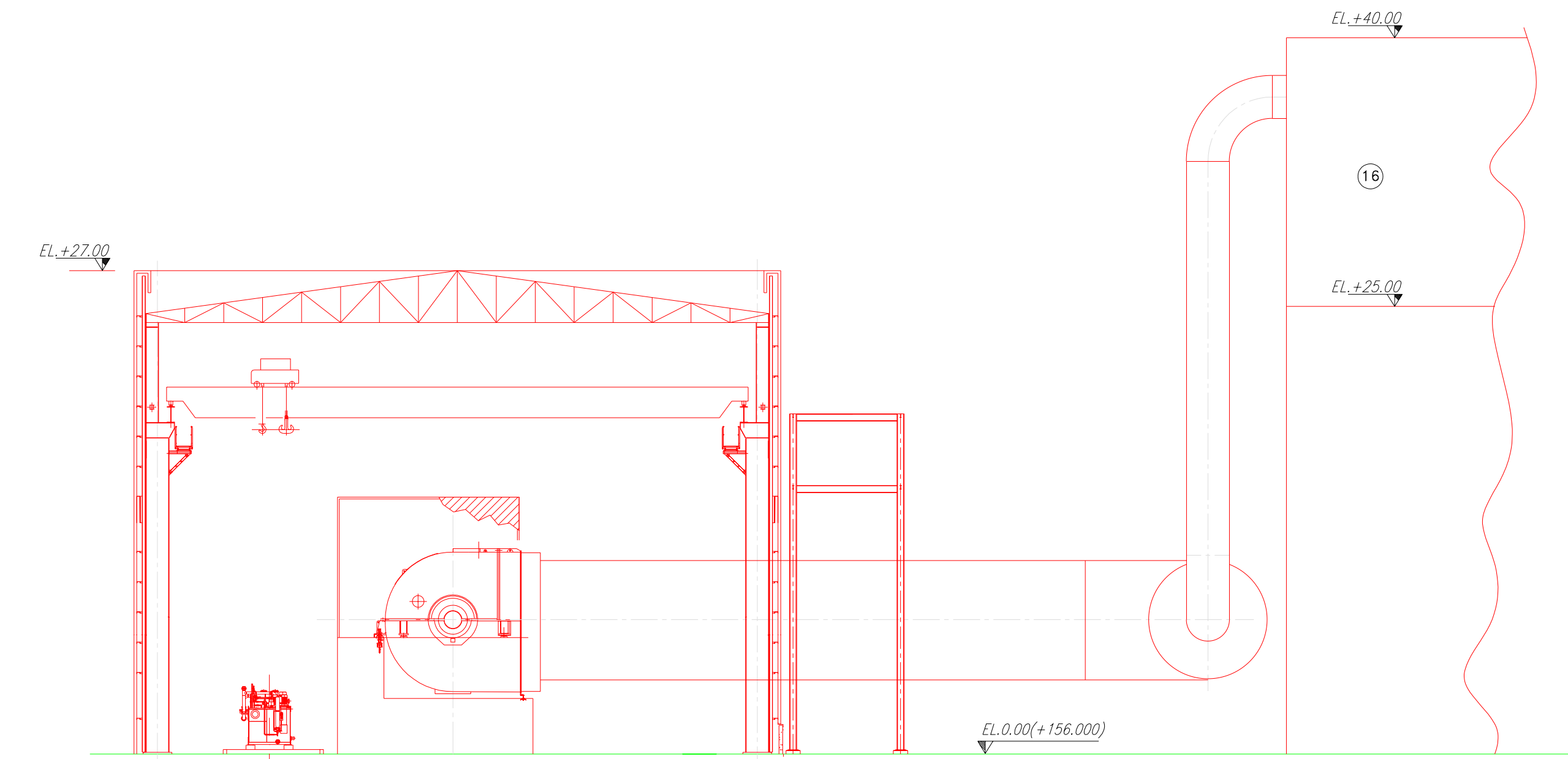


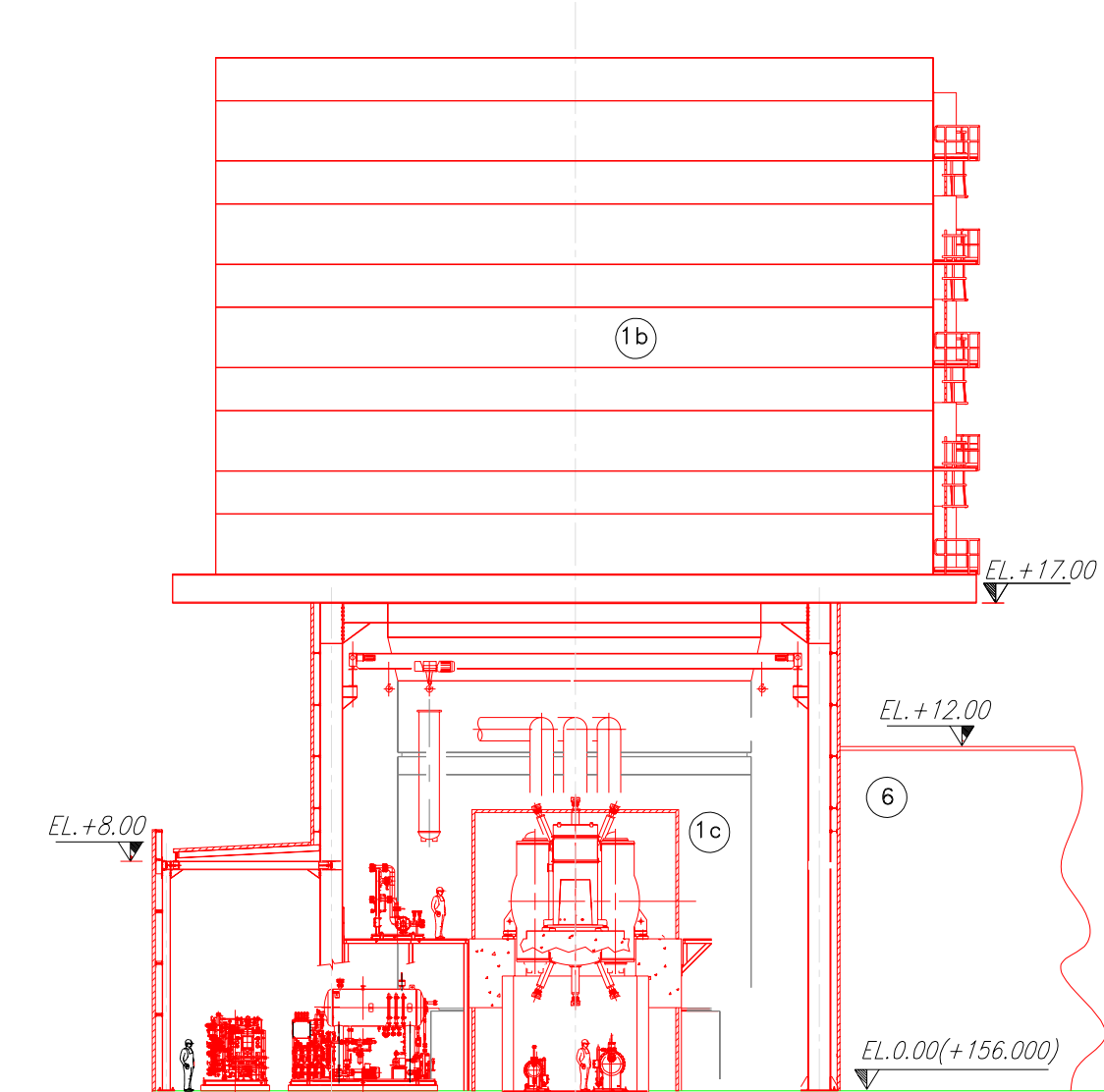
SEZIONE A-A



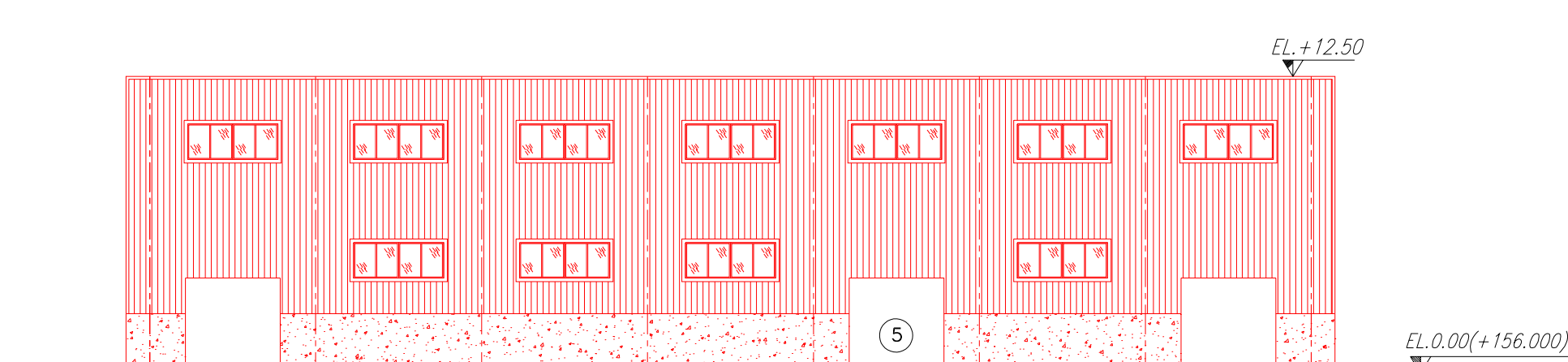
SEZIONE B-B



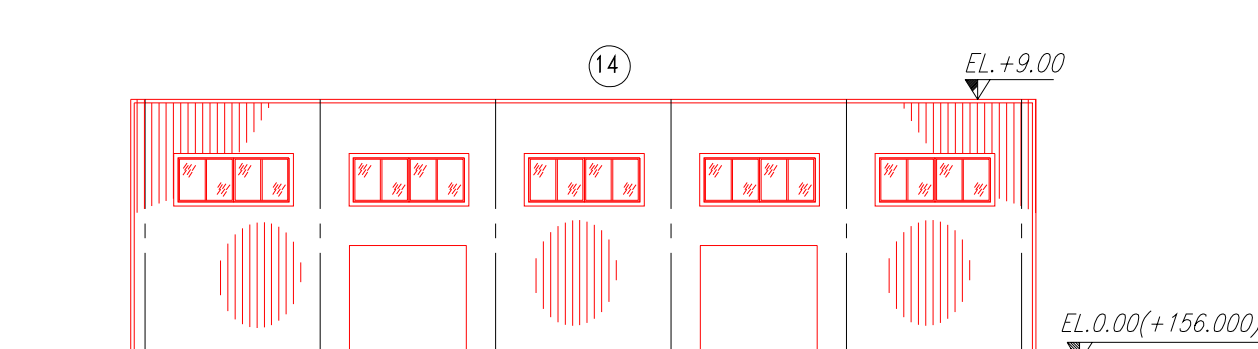
SEZIONE C-C



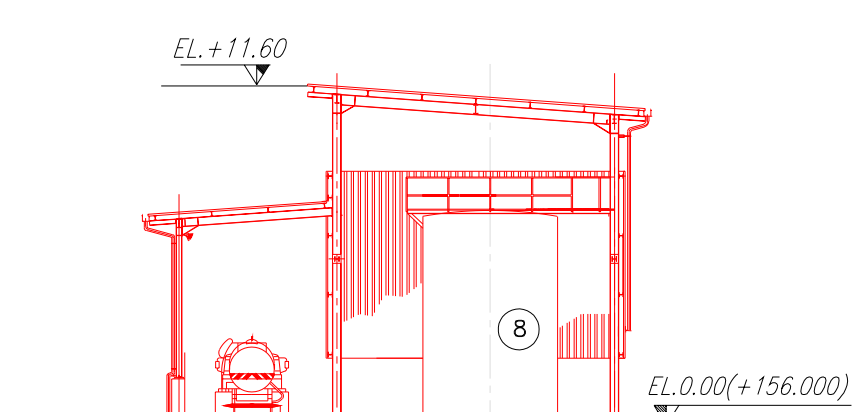
SEZIONE D-D



SEZIONE E-E



SEZIONE F-F



SEZIONE G-G

LEGENDA APPARECCHIATURE NUOVA UNITA'	
POS.	DENOMINAZIONE IMPIANTO
1	TURBOGAS
1a	TURBINA A GAS
1b	FILTRO ARIA COMBURENTE
1c	GENERATORE
2	CALDAIA A RECUPERO E CAMINO
3	TURBINA A VAPORE
3a	GENERATORE
5	EDIFICIO SERVIZI INDUSTRIALI
6	EDIFICIO ELETTRICO
7	CAMINO DI BY-PASS
8	AREA DI STOCCAGGIO NH3
14	MAGAZZINO
16	AIR COOLER CONDENSER

REV.	DATE	SCOPE	REVISION DESCRIPTION	PREPARED BY	COOPERATIONS	APPROVED BY	ISSUED BY
01	05-06-20	PR	PRIDISEGNATO	UJA		UJA	UJA
00	21-04-20	PR	PRELIMINARE	VCA			

CLIENTE		ENEL PRODUZIONE S.p.A.		EMPLOYER SUBMITTAL	
PROGETTO		CAPACITY MARKET ITALY		FOR CLIENT	
TITOLO		TRINO		FOR APPROVAL	
SISTEMAZIONI APPARECCHIATURE SEZIONI		SISTEMAZIONI APPARECCHIATURE SEZIONI		FOR APPROVAL	

SCALE	1:250	DWG No.	PBITC00954	SHEET	D	OF	8
FILE NAME	PBITC0095401.dwg	REVISED BY		SCALE	D B		