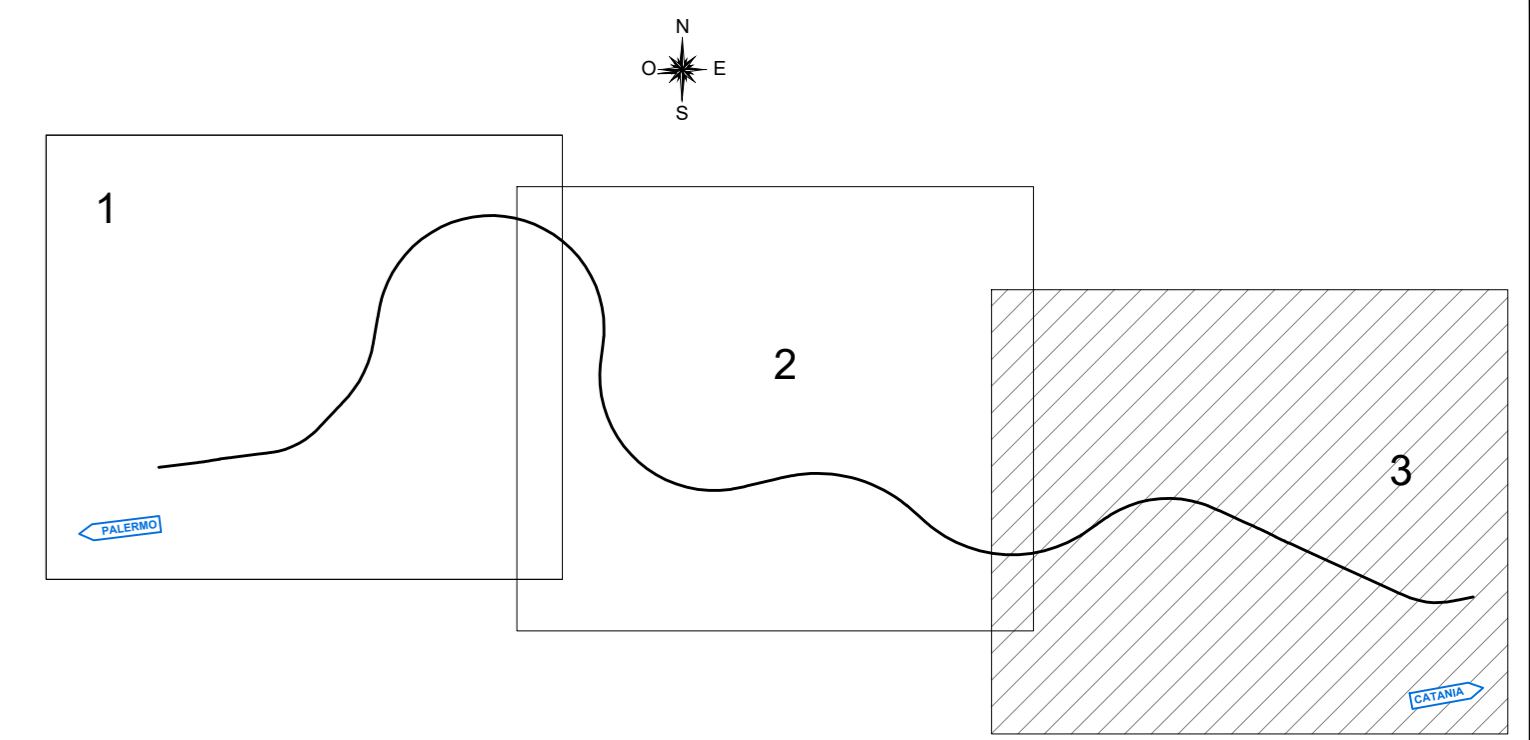


VERTICI PLANIMETRICI ASSE PRINCIPALE

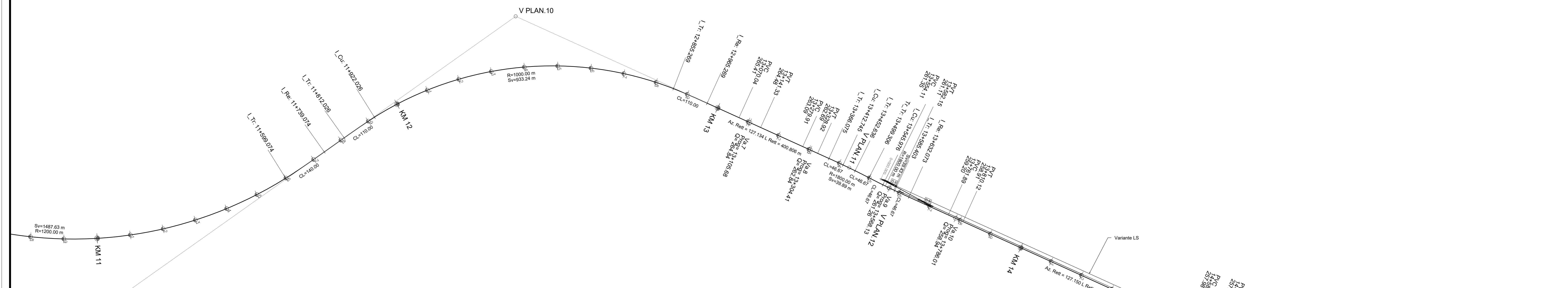
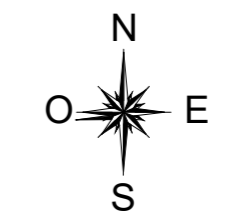
Lotto 4B V PLAN 1				Lotto 4B V PLAN 2				Lotto 4B V PLAN 3				Lotto 4B V PLAN 4				Lotto 4B V PLAN 5				Lotto 4B V PLAN 6				Lotto 4B V PLAN 7			
X	2461448.296	Asin	82.134650	X	2461894.080	Asin	82.134650	X	2462033.789	Asin	82.134650	X	2462133.360	Asin	82.131633	X	2462304.983	Asin	48.239642	X	2462374.237	Asin	11.100603	X	2462394.261	Asin	208.754855
Y	4159634.237	Adin	88.536493	Y	4159699.496	Adin	88.536493	Y	4159744.929	Adin	82.121633	Y	4159861.900	Adin	48.239642	Y	4159846.886	Adin	11.100603	Y	4159723.623	Adin	208.754855				
Asin	82.134650	f	0.000000	R(m)	1800.000	f	0.000000	R(m)	1800.000	f	0.000000	R(m)	1800.000	f	0.000000	R(m)	1800.000	f	0.000000	R(m)	1800.000	f	0.000000				
Asin	82.134650	Sv(m)	120	Sv(m)	120	Sv(m)	120	Sv(m)	120	Sv(m)	120	Sv(m)	120	Sv(m)	120	Sv(m)	145	Sv(m)	145	Sv(m)	145						
Asin	82.134650	Lr(m)	40.000	Lr(m)	40.000	Lr(m)	40.000	Lr(m)	40.000	Lr(m)	40.000	Lr(m)	40.000	Lr(m)	40.000	Lr(m)	40.000	Lr(m)	40.000	Lr(m)	40.000						
Asin	82.134650	Alfa tot	3.598157	Alfa tot	3.615140	Alfa tot	3.615140	Alfa tot	3.5912217	Alfa tot	3.5912217	Alfa tot	3.5912217	Alfa tot	3.5912217	Alfa tot	3.5912217	Alfa tot	3.5912217	Alfa tot	3.5912217						
Asin	82.134650	Tarco	30.871	Tarco	30.871	Tarco	30.871	Tarco	31.111	Tarco	31.111	Tarco	31.111	Tarco	31.111	Tarco	31.111	Tarco	31.111	Tarco	31.111						

KEY PLAN



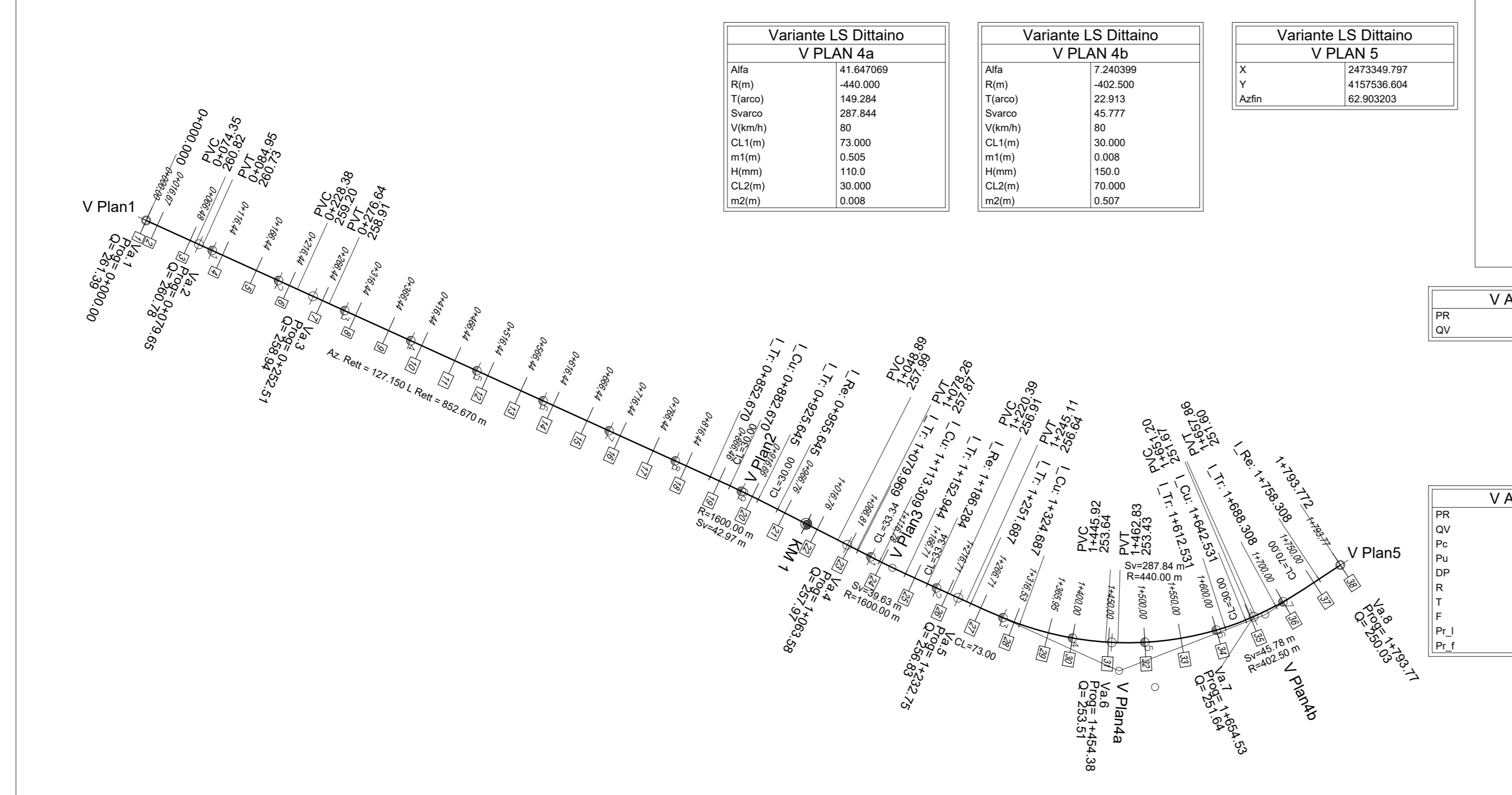
VERTICI ALTIMETRICI ASSE PRINCIPALE

V ALT. 1			V ALT. 2			V ALT. 3			V ALT. 4			V ALT. 5			V ALT. 6			V ALT. 7									
PR	1110.540	QV	451.105	PR	879.540	QV	451.105	PR	1110.540	QV	451.105	PR	1433.260	QV	457.678	PR	1955.180	QV	458.880	PR	7400.953	QV	355.195	PR	131105.684	QV	264.841
Pc	0.000	Pc	0.000	Pc	0.006	Pc	0.006	Pc	0.016	Pc	0.016	Pc	0.005	Pc	0.005	Pc	-0.018	Pc	-0.018	Pc	-0.018	Pc	-0.018	Pc	-0.016	Pc	-0.016
DP	0.000	DP	0.005	DP	0.010	DP	0.010	DP	-0.011	DP	-0.011	DP	-0.023	DP	-0.023	DP	0.002	DP	0.002	DP	-0.006	DP	-0.006	DP	0.006	DP	0.006
R	4000.000	R	4000.000	R	4000.000	R	4000.000	R	4000.000	R	4000.000	R	4000.000	R	4000.000	R	20000.000	R	20000.000	R	12000.000	R	12000.000	R	12000.000	R	12000.000
T	11.001	T	22.299	T	14.021	T	22.299	T	24.798	T	24.798	T	51.701	T	51.701	T	19.933	T	19.933	T	35.620	T	35.620	T	35.620	T	35.620
F	0.013	F	0.055	F	0.055	F	0.055	F	-0.297	F	-0.297	F	0.010	F	0.010	F	0.010	F	0.010	F	0.053	F	0.053	F	0.053	F	0.053
Pv_1	886.539	Pv_1	886.539	Pv_1	1088.560	Pv_1	1088.560	Pv_1	1458.790	Pv_1	1458.790	Pv_1	7449.973	Pv_1	7449.973	Pv_1	13070.969	Pv_1	13070.969	Pv_1	13141.302	Pv_1	13141.302				



TRACCIAMENTO VARIANTE LS

Variante LS Dittaino V PLAN 1				Variante LS Dittaino V PLAN 2				Variante LS Dittaino V PLAN 3				Variante LS Dittaino V PLAN 4			
X	2417106.079	Asin	130.553907	X	2417233.133	Asin	130.553907	X	2417359.133	Asin	130.553907	X	2417506.655	Asin	130.553907
Y	4158010.864	Adin	127.150336	Y	4157638.842	Adin	127.150336	Y	4157532.713	Adin	127.150336	Y	4157366.451	Adin	127.150336
Asin	130.553907	f	0.000000	R(m)	1600.000	f	0.000000	R(m)	1600.000	f	0.000000	R(m)	1600.000	f	0.000000
Asin	130.553907	Sv(m)	80	Sv(m)	80	Sv(m)	80	Sv(m)	80	Sv(m)	80	Sv(m)	80	Sv(m)	80
Asin	130.553907	Lr(m)	30.000	Lr(m)	30.000	Lr(m)	30.000	Lr(m)	30.000	Lr(m)	30.000	Lr(m)	30.000	Lr(m)	30.000
Asin	130.553907	Alfa tot	2.903871	Alfa tot	2.903871	Alfa tot	2.903871	Alfa tot	2.903871	Alfa tot	2.903871	Alfa tot	2.903871	Alfa tot	2.903871
Asin	130.553907	Tarco	21.489	Tarco	21.489	Tarco	21.489	Tarco	21.489	Tarco	21.489	Tarco	21.489	Tarco	21.489



V ALT. 1			V ALT. 2			V ALT. 3			V ALT. 4						
PR	1040.000	QV	261.350	PR	779.620	QV	260.782	PR	282.568	QV	258.940	PR	1380.577	QV	257.970
Pc	-0.008	Pc	-0.011	Pc	-0.011	Pc	-0.011	Pc	-0.001	Pc	-0.001	Pc	-0.001	Pc	-0.001
DP	-0.003	DP	0.009	DP	0.009	DP	0.009	DP	0.008	DP	0.008	DP	-0.006	DP	-0.006
R	3000.000	R	3000.000	R	3000.000	R	3000.000	R	3000.000	R	3000.000	R	3000.000	R	3000.000
T	14.801	T	24.814	T	14.801	T	24.814	T	14.801	T	14.801	T	14.801	T	14.801
F	-0.004	F	0.097	F	0.097	F	0.097	F	-0.020	F	-0.020	F	-0.020	F	-0.020
Pv_1	74.349	Pv_1	228.381	Pv_1	74.349	Pv_1	228.381	Pv_1	1548.889	Pv_1	1548.889	Pv_1	1078.265	Pv_1	1078.265

COMMITTENTE:



PROGETTAZIONE:



DIRETTRICE FERROVIARIA MESSINA - CATANIA - PALERMO
NUOVO COLLEGAMENTO PALERMO - CATANIA

U.O. INFRASTRUTTURE CENTRO

PROGETTO DEFINITIVO

TRATTA NUOVA ENNA - DITTAINO (LOTTO 4B)

INFRASTRUTTURA FERROVIARIA

Tracciamento

Planimetria di tracciamento - Tav.3/3

SCALA:
1:5000

COMMESSA LOTTO FASE ENTE TIPO DOC. OPERA/DISCIPLINA PROGR. REV.

RS	3V	40	D	29	P6	1	F	0	0	0	8	0	0	3	B
----	----	----	---	----	----	---	---	---	---	---	---	---	---	---	---

Rev.	Descrizione	Redatto	Data	Verificato	Data	Approvato	Data	Autorizzato	Data
A	Emissione esecutiva	L. Mazzoni	04/08/2015	R. Scaramanna	04/08/2015	F. Scaramanna	04/08/2015	F. Scaramanna	04/08/2015
B	Emissione esecutiva	L. Mazzoni	04/10/2015	R. Scaramanna	04/10/2015	F. Scaramanna	04/10/2015	F. Scaramanna	04/10/2015