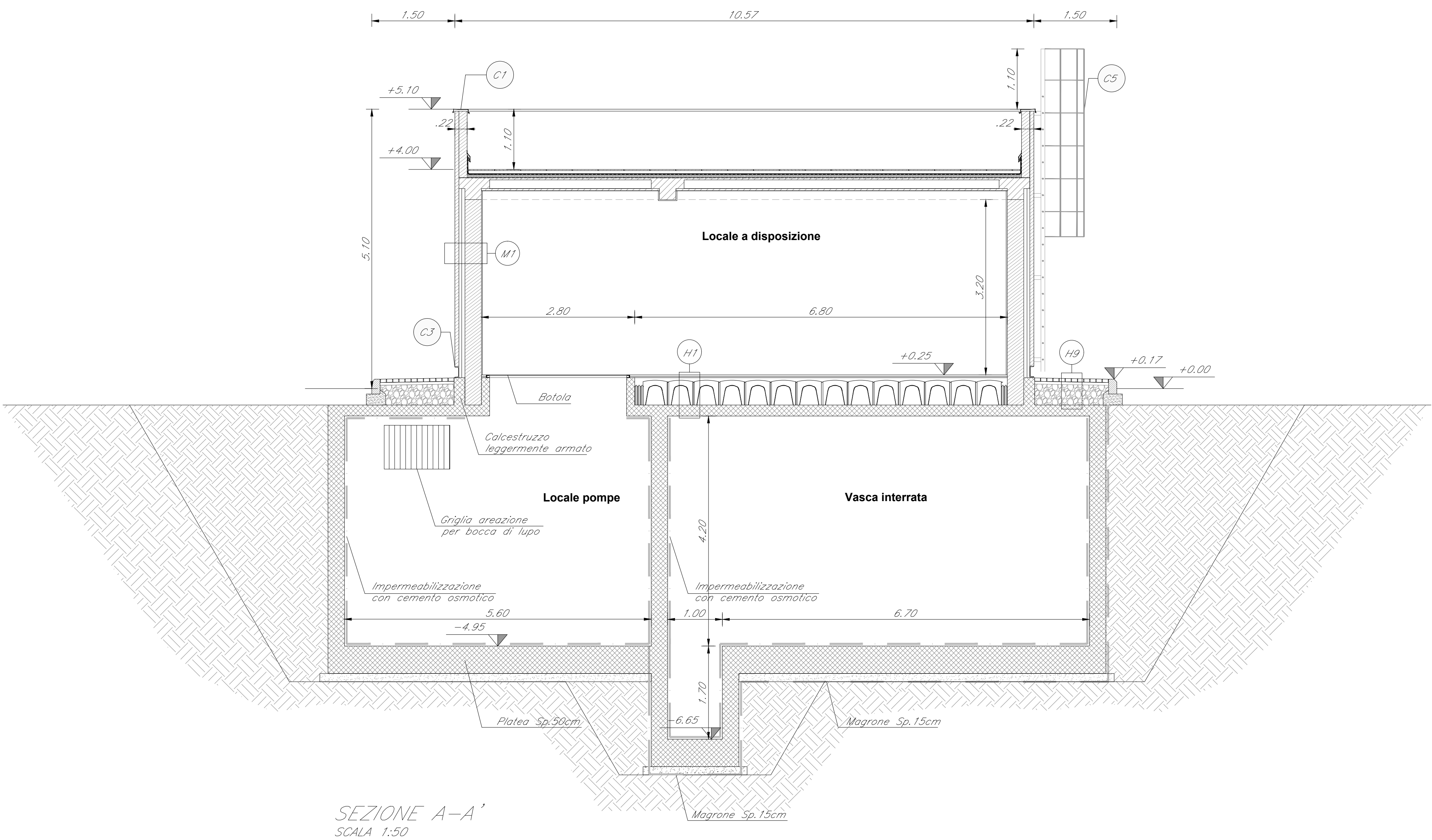
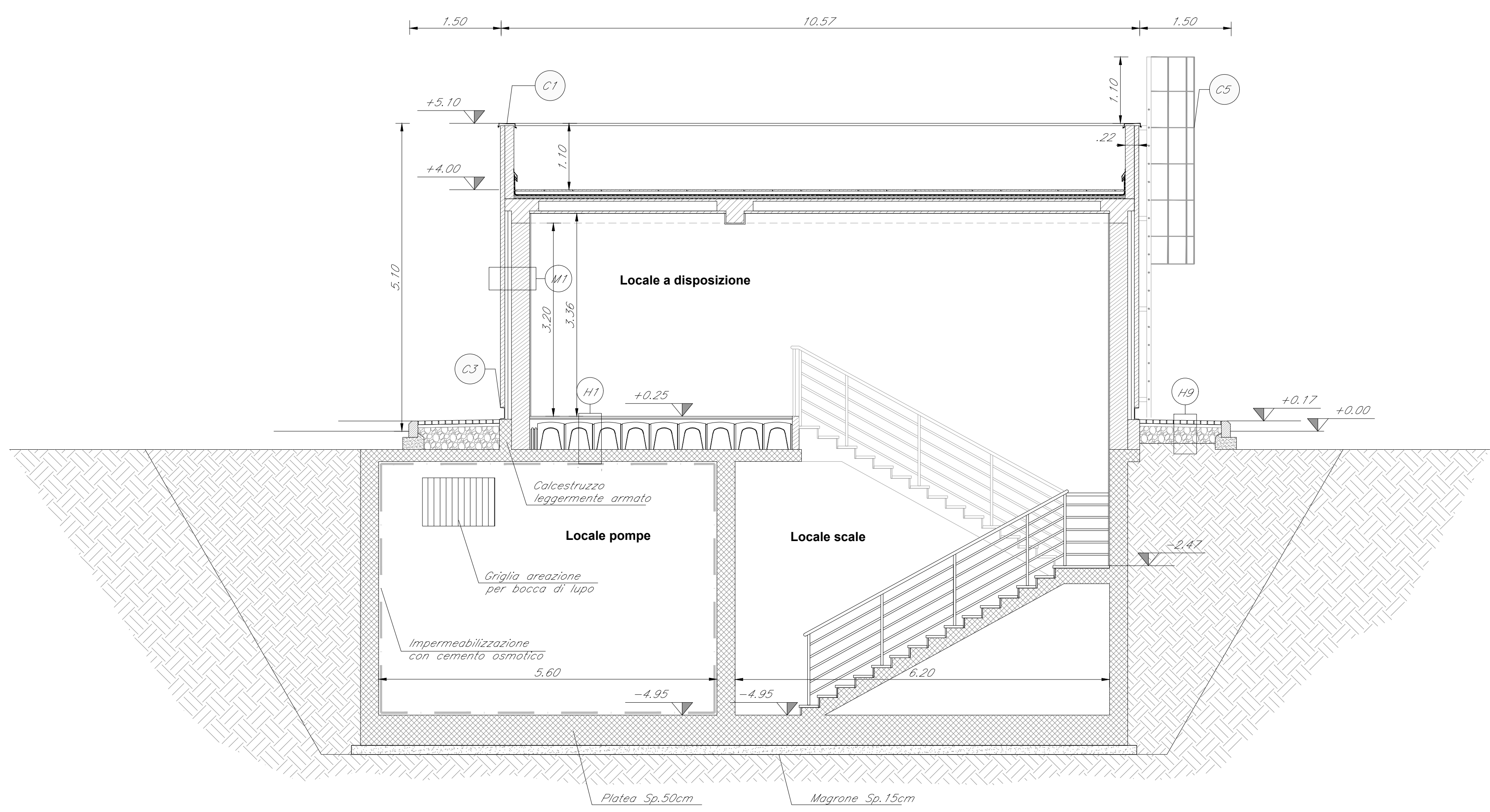


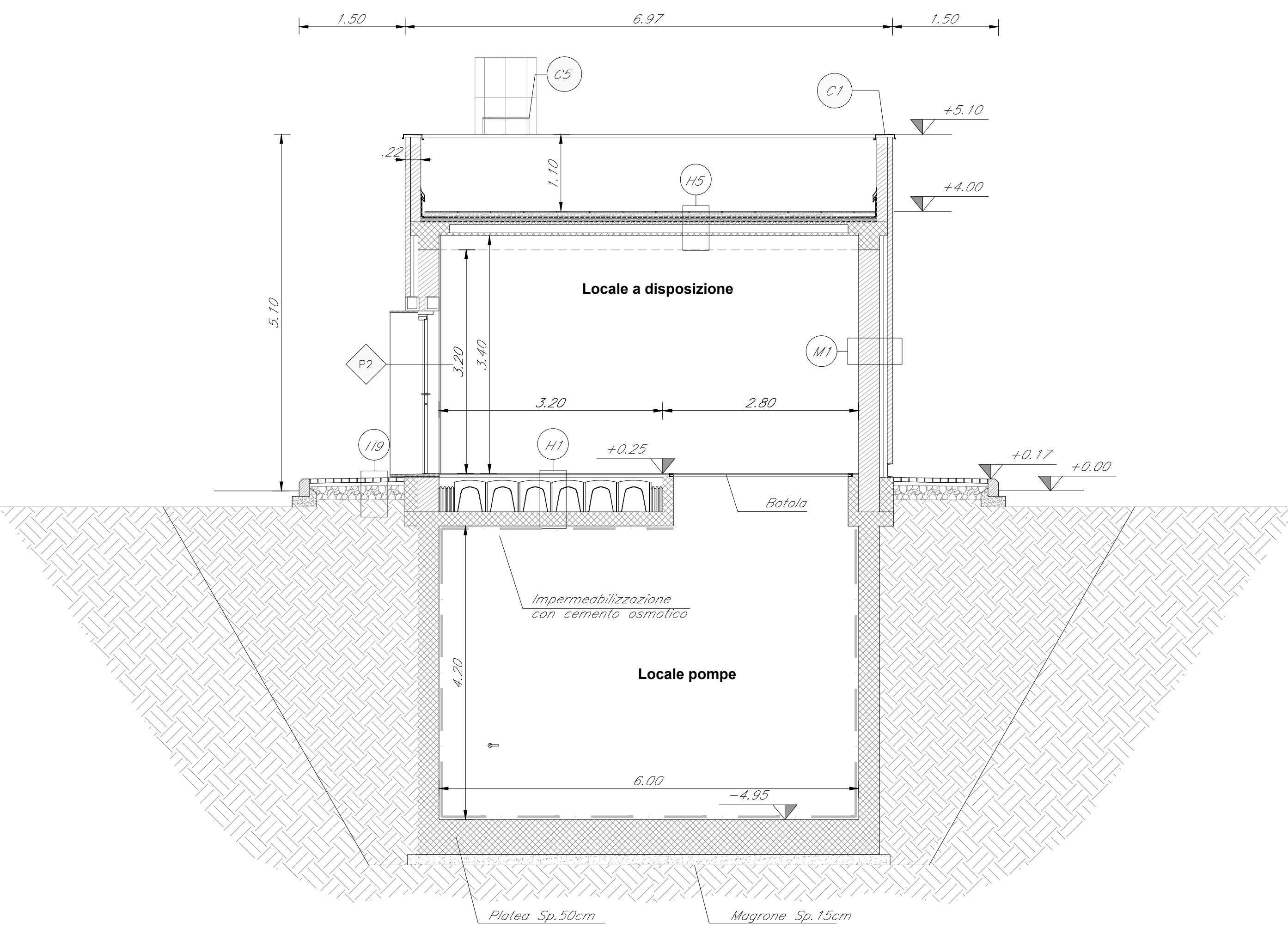
Table with columns ABACO INTERVENTI and ABACO INFISSI. It defines symbols for surfaces, packages, and horizontal closures, and lists materials like zinc-coated steel and aluminum profiles.



SEZIONE A-A'
SCALA 1:50



SEZIONE B-B'
SCALA 1:50



SEZIONE C-C'
SCALA 1:50

Table detailing 'CHIUSURE ORIZZONTALI' (Horizontal Closures) for various rooms, specifying materials like zinc-coated steel, aluminum profiles, and glass, along with their dimensions and installation details.

Table detailing 'FINITURA PARETI' (Wall Finishes) for different rooms, listing materials like plaster, concrete, and metal panels.

Table detailing 'MURATURE' (Masonry) for various walls, specifying materials like concrete blocks and metal structures.

Table detailing 'FINITURA SOFFITTO' (Ceiling Finishes) for different rooms, listing materials like plaster and metal panels.

Table detailing 'INFISSI' (Fixings) for various wall and ceiling installations, listing materials like zinc-coated steel and aluminum profiles.

Table detailing 'OPERE METALLICHE' (Metal Works) for various structural elements, listing materials like steel and aluminum.

Project information block including COMMITTEE (R.F.I. Rete Ferroviaria Italiana), PROJECTOR (ITALFERR), and project location (DIRETTRICE FERROVIARIA MESSINA - CATANIA - PALERMO).

Project title: NUOVO COLLEGAMENTO PALERMO - CATANIA
Project description: U.O. INFRASTRUTTURE CENTRO
Project phase: PROGETTO DEFINITIVO
Project location: TRATTA NUOVA ENNA - DITTAINO (LOTTO 4B)

Technical drawing metadata including revision table (Rev. 1-5), scale (1:50), and project identification code (RS3V40D29WB0000002B).