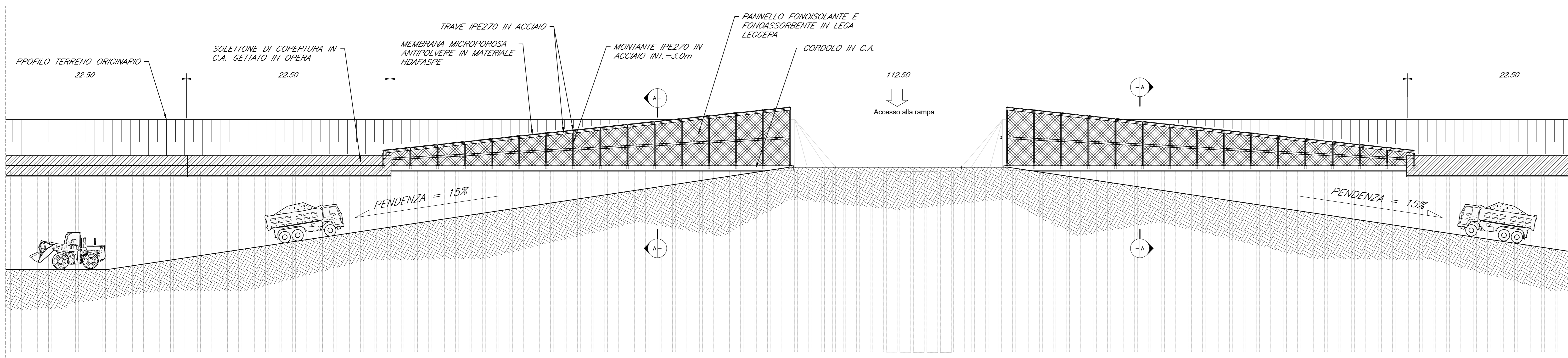
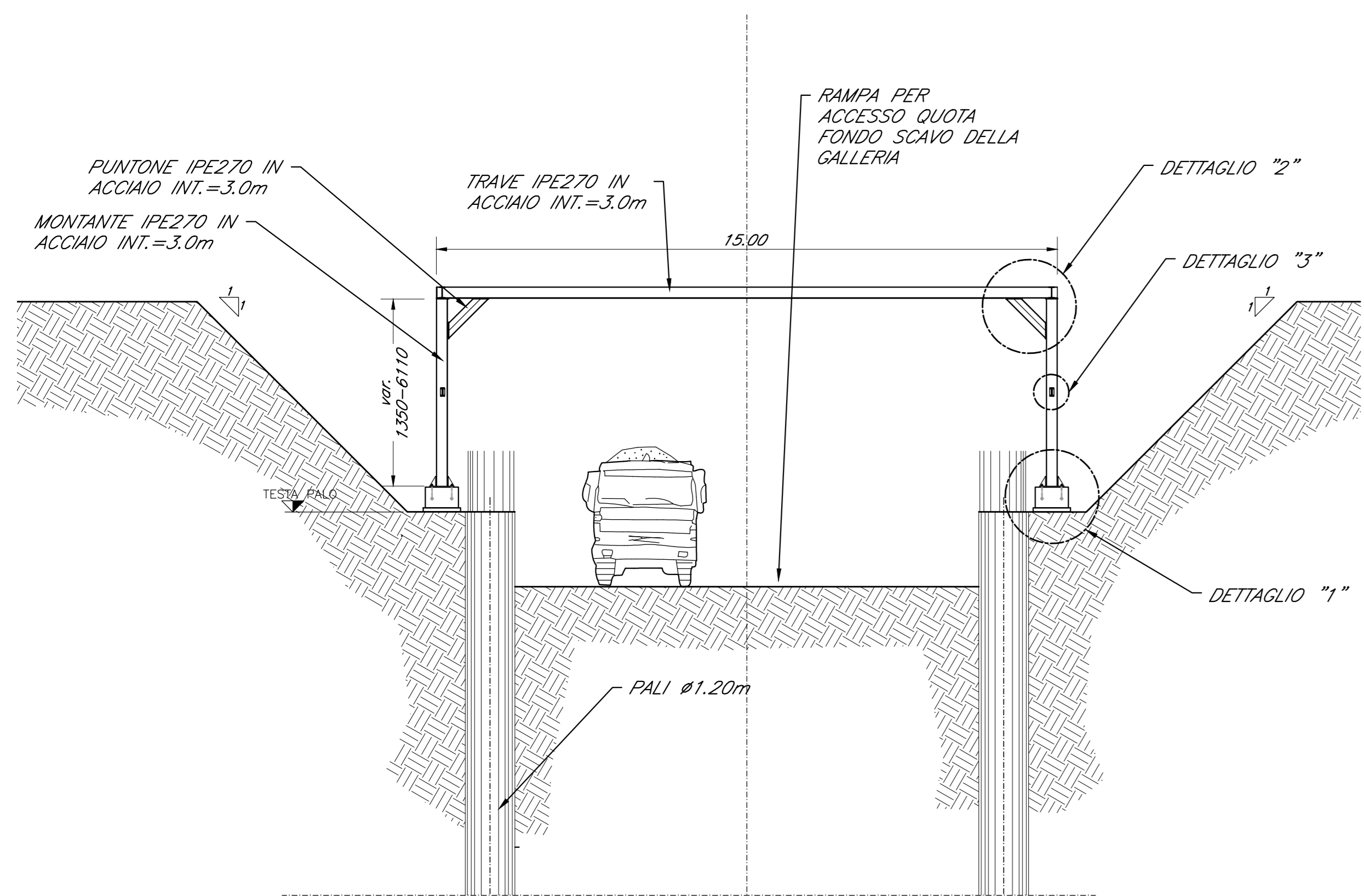


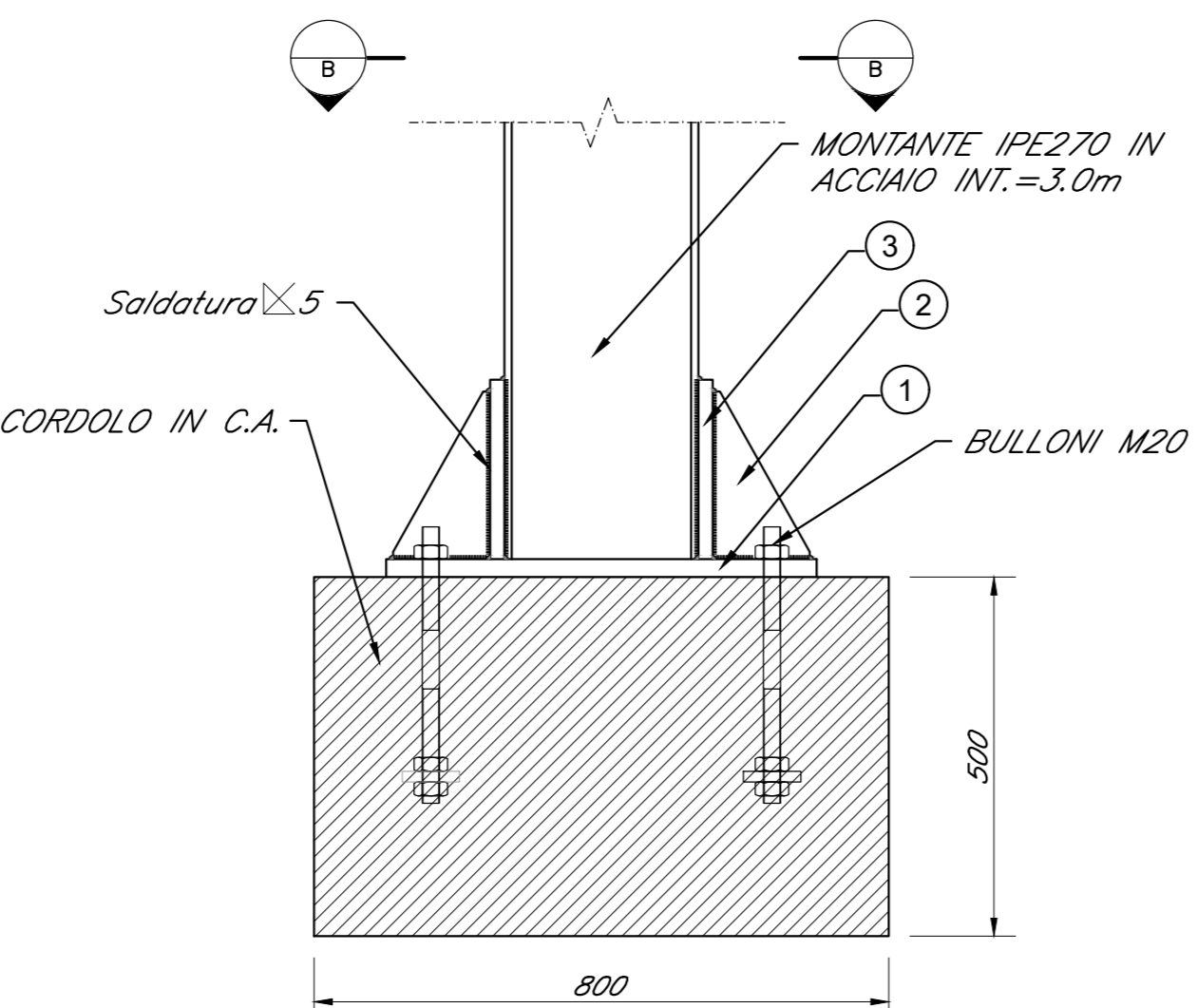
SEZIONE LONGITUDINALE
Scala 1:200



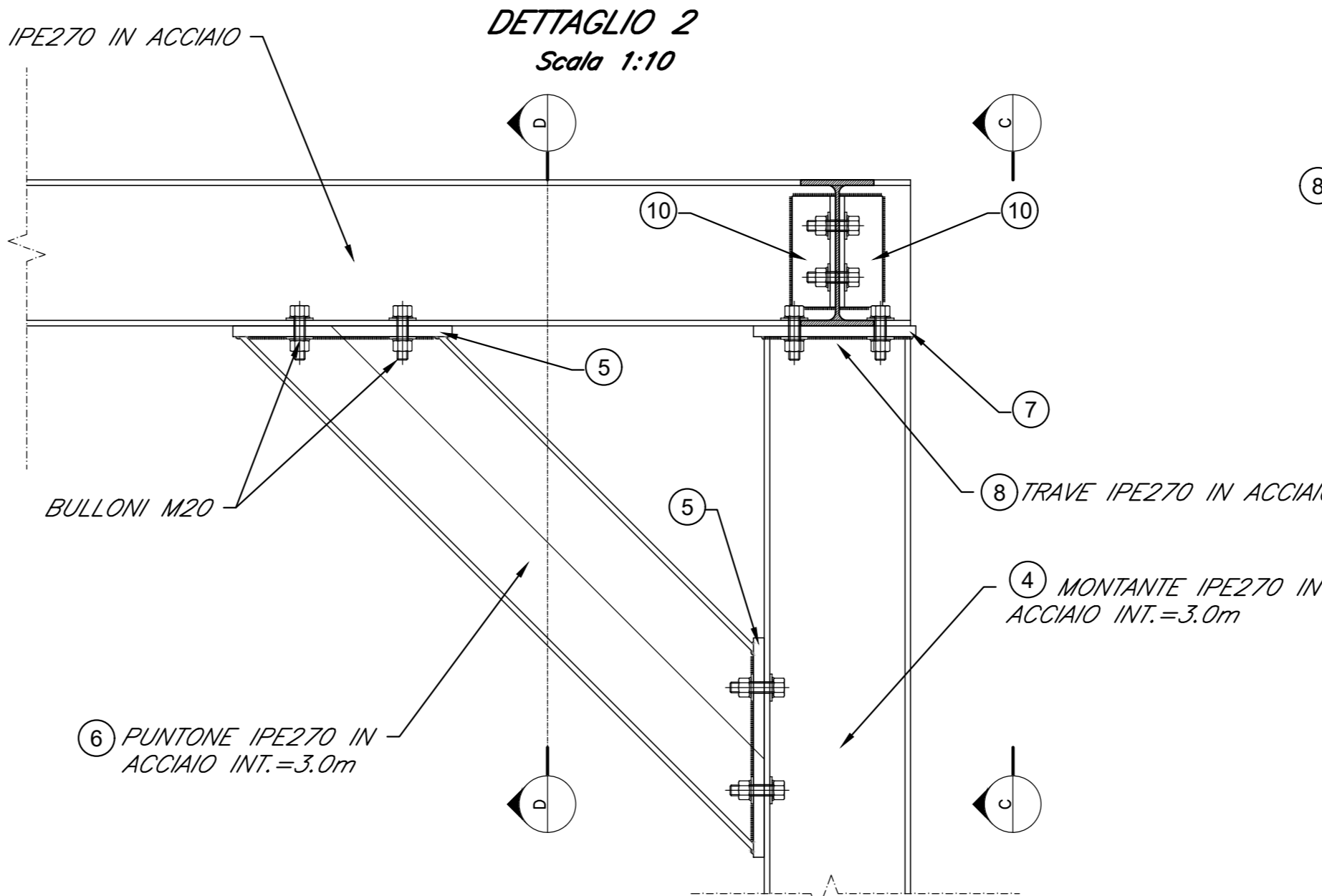
SEZIONE A-A
Scala 1:100



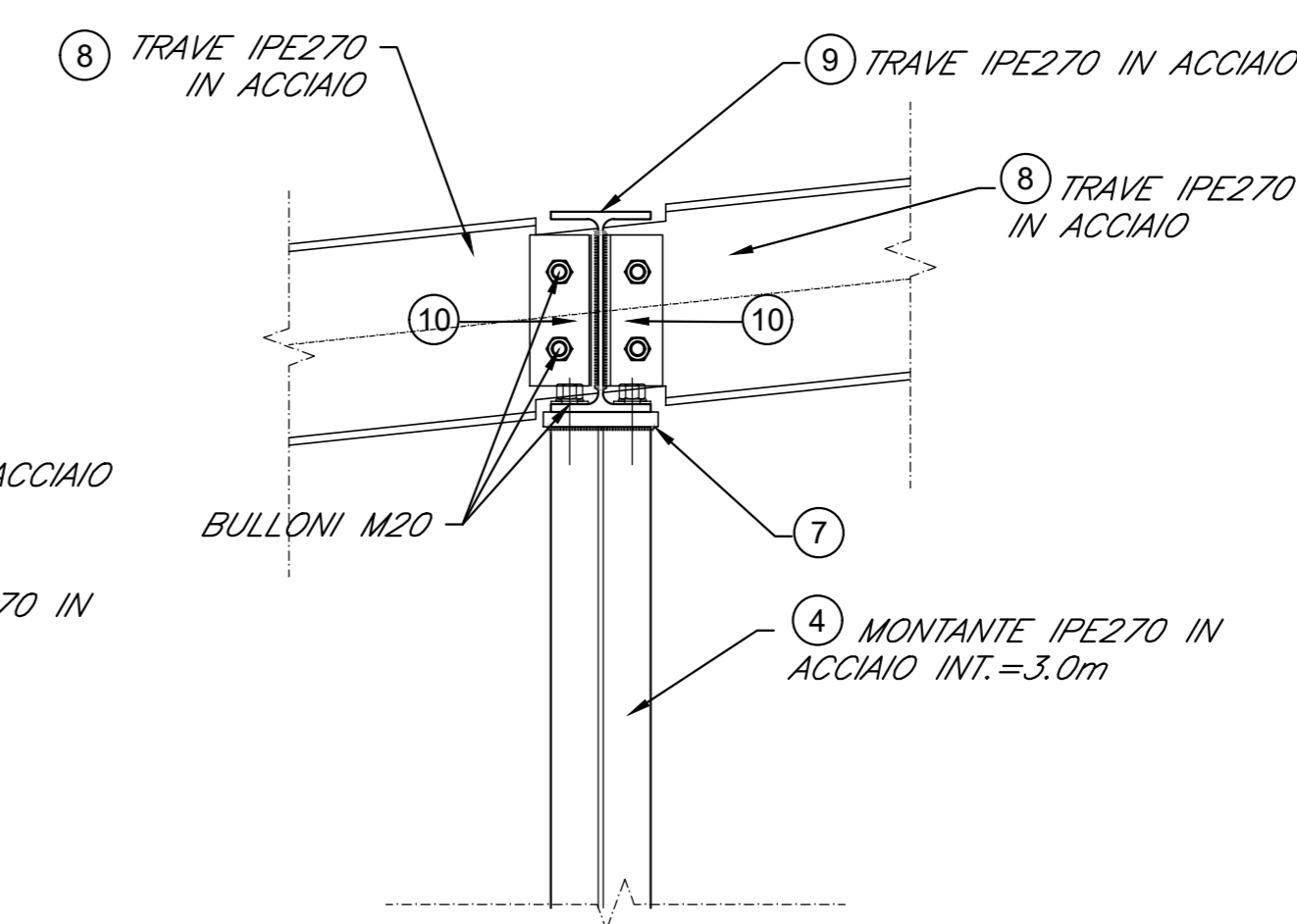
DETAGLIO 1
Scala 1:10



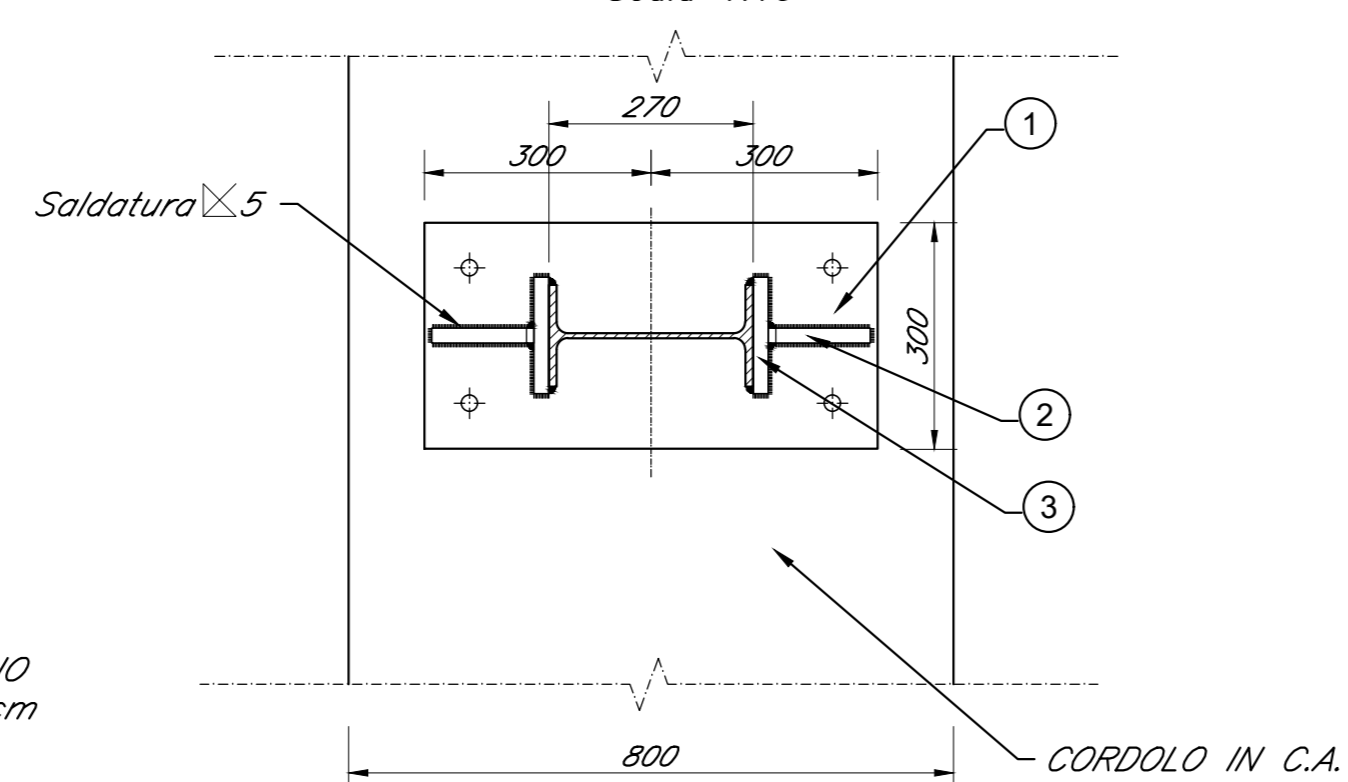
DETAGLIO 2
Scala 1:10



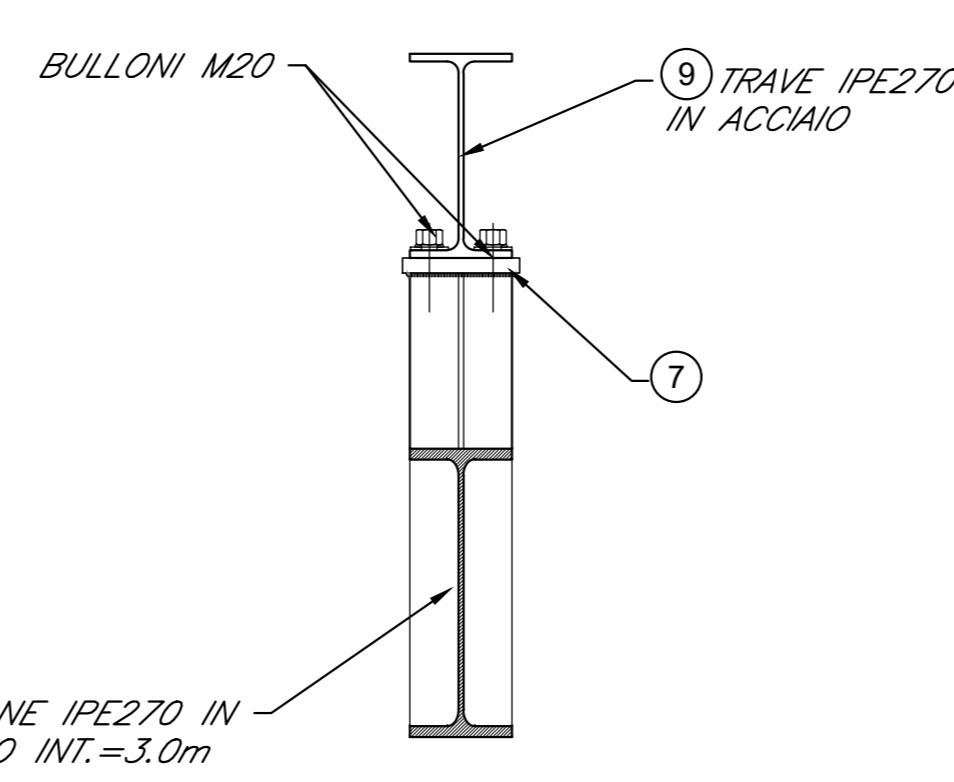
SEZIONE C-C
Scala 1:10



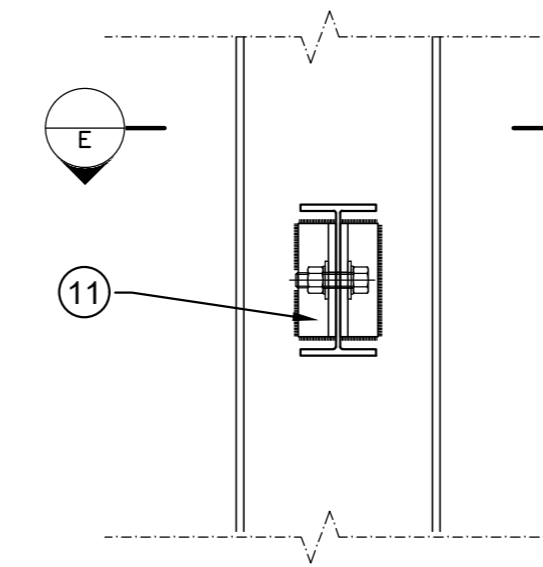
SEZIONE B-B
Scala 1:10



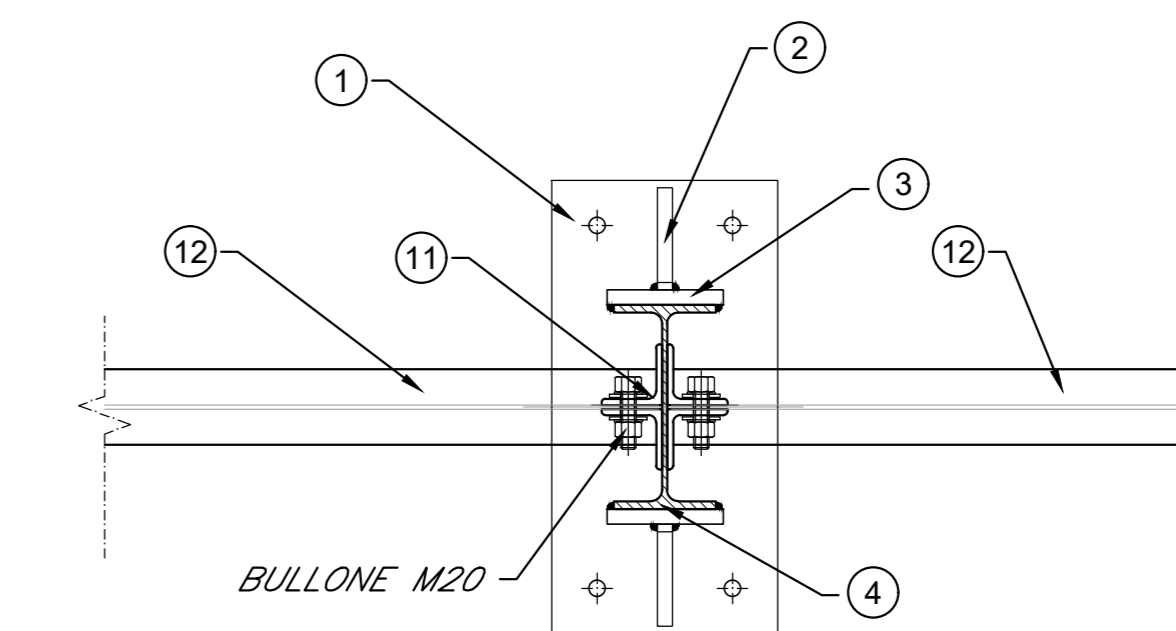
SEZIONE D-D
Scala 1:10



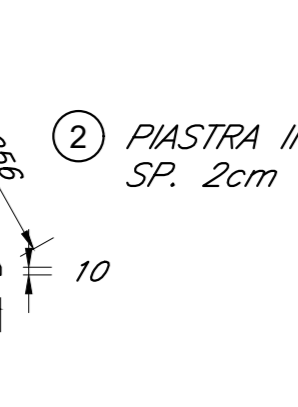
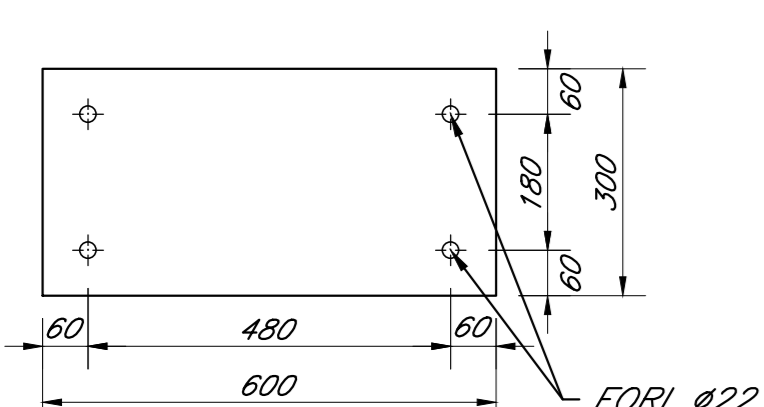
DETAGLIO 3
Scala 1:10



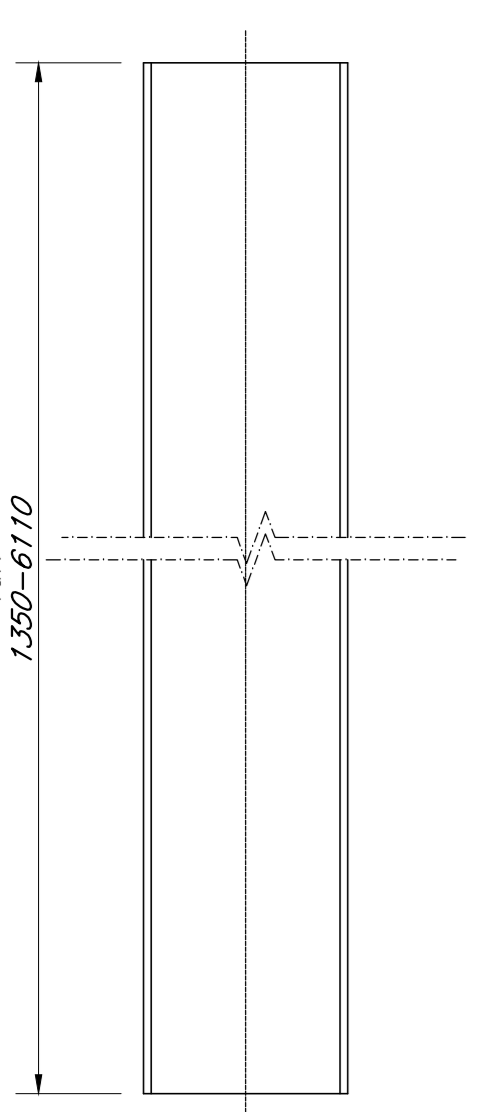
SEZIONE E-E
Scala 1:10



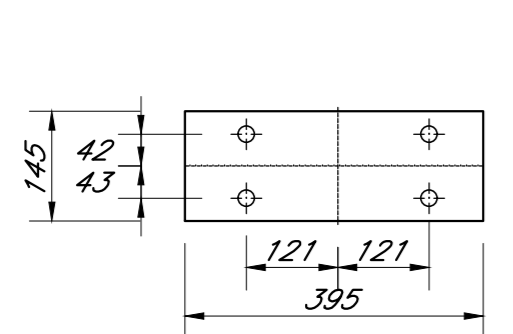
1 PIASTRA IN ACCIAIO
30x60cm SP. 2cm



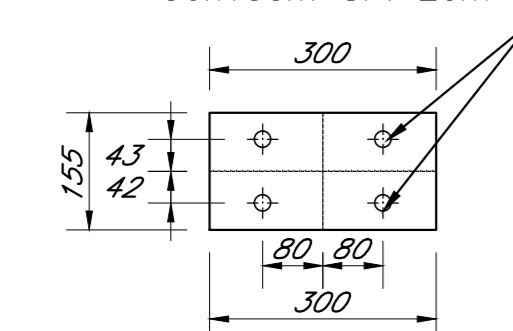
4 MONTANTE IPE270 IN ACCIAIO INT.=3.0m



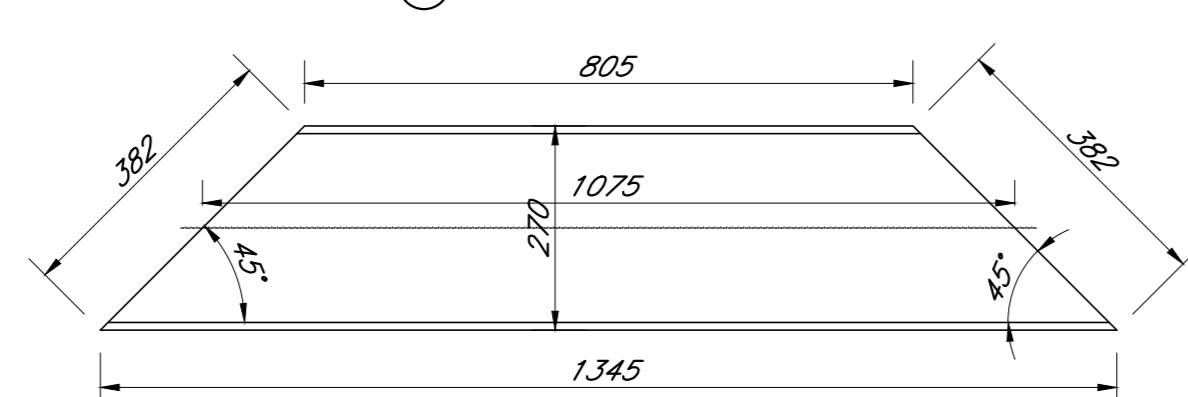
5 PIASTRA IN ACCIAIO
15x40cm SP. 2cm



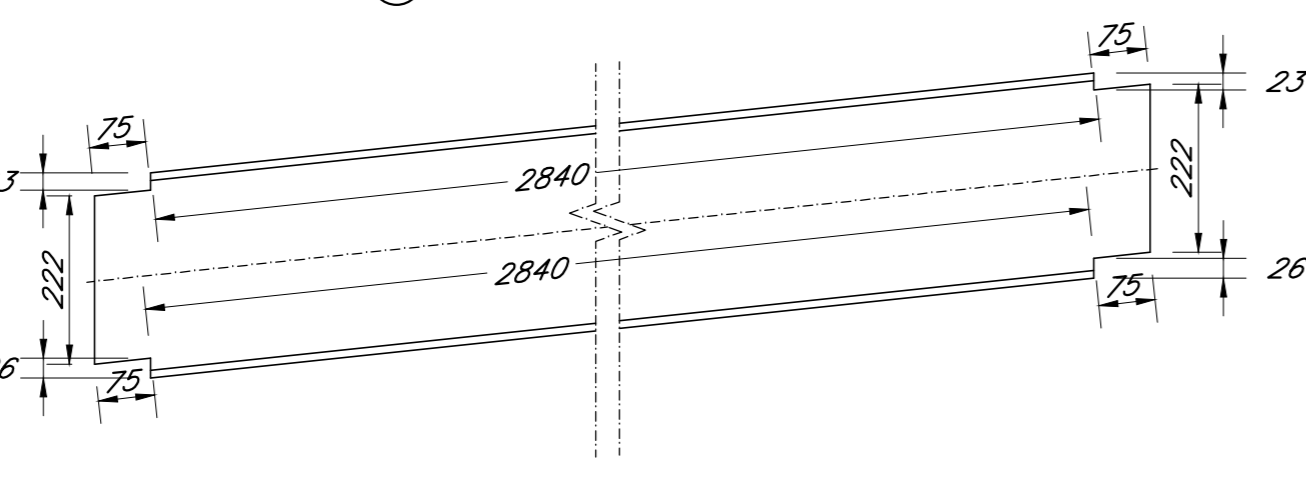
7 PIASTRA IN ACCIAIO
30x15cm SP. 2cm



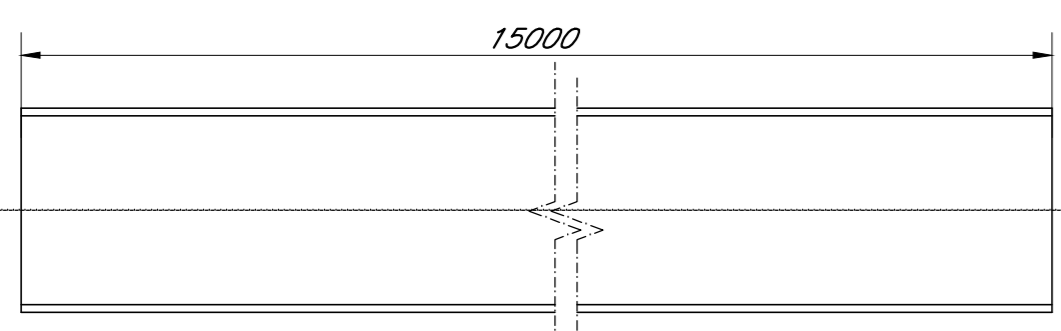
6 PUNTO IPE270



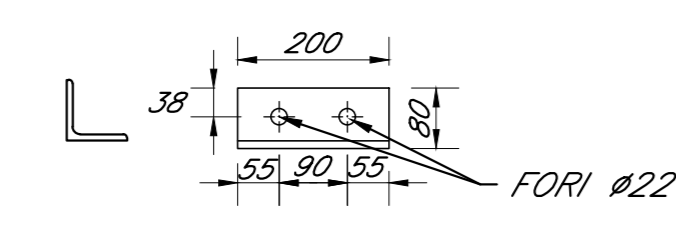
8 TRAVE IPE270 IN ACCIAIO



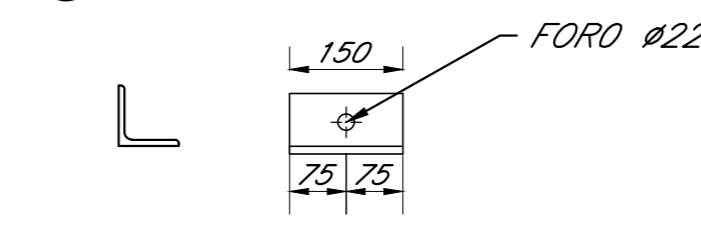
9 TRAVE IPE270 IN ACCIAIO



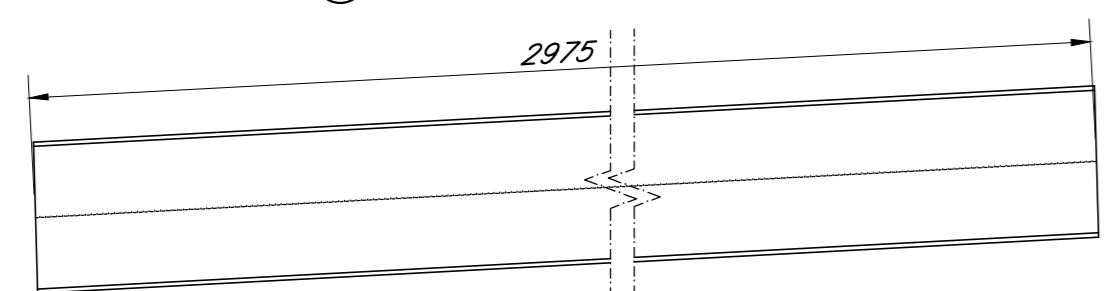
10 ANGOLARE IN ACCIAIO 80x8



11 ANGOLARE IN ACCIAIO 80x8



12 TRAVE IPE200 IN ACCIAIO



ELE.	Q.TA'	DESCRIZIONE	L (m)	Peso unitario(Kg)	Peso totale (Kg)
1	64	PIASTRA 600x300x20	-	28.26	1808.64
2	128	1/2 PIASTRA 135x233x20	-	2.75	351.68
3	128	PIASTRA 150x250x20	-	5.88	753.60
4	68	IPE 270	med. 3.73	134.65	9156.40
5	128	PIASTRA 145x395x20	-	8.99	1150.99
6	68	IPE 270	med. 1.075	38.81	2638.91
7	68	PIASTRA 155x300x20	-	7.30	496.43
8	60	IPE 270	2.84	102.52	6151.44
9	32	IPE 270	15.00	541.50	17328.00
10	128	ANGOLARE 80x80x8	0.20	1.92	245.76
11	32	ANGOLARE 80x80x8	0.15	1.44	184.32
12	60	IPE 200	2.975	66.64	3998.4
				TOTALE	44264.59

CARATTERISTICHE DEI MATERIALI

INCIDENZA ACCIAIO

NOTE GENERALI

Le dimensioni sono in m, se non diversamente indicato.

COMMITTENTE: **RFI** INFRASTRUTTURE FERROVIARIE ITALIANE
GRUPPO FERROVIE DELLO STATO ITALIANE

DIREZIONE LAVORI: **ITALFERR** GRUPPO FERROVIE DELLO STATO ITALIANE

APPALTATORE: **PIZZAROTTI**, **Ghella**, **ITINERA**, **SALCEP**, **JedS INFRASITRUTTURE**

PROGETTAZIONE: **GODATA ENGINEERING**, **INTEGRA RINA**
RAGGRUPPAMENTO TEMPORANEO PROGETTISTI: Ing. Fabio RIZZO
DIRETTORE DELLA PROGETTAZIONE: Ing. PIERLUIGIO GRASSO
Responsabile esecutivo della fase progettuale

PROGETTO ESECUTIVO

ITINERARIO NAPOLI-BARI
RADDOPPIO TRATTA CANCELLO - BENEVENTO
II LOTTO FUNZIONALE FRASSO TELESINO - VITULANO
1° LOTTO FUNZIONALE FRASSO TELESINO - TELESE

GALLERIA ARTIFICIALE di TELESINO dal km 22+263 al km 25+200
Uscita di emergenza FA03
Tunnel schermante

APPALTATORE: **INFRASTRUTTURE FERROVIARIE S.p.A.**
Ing. G. Di Biase
Ing. G. Di Biase

SCALA: VARIE

COMMESSA LOTTO FASE ENTE TIPO DOC. OPERA/DISCIPLINA PROGR. REV.

1 F 2 6 1 2 E Z Z B Z GA 0 2 0 0 0 0 8 B

Rev.	Descrizione	Redatto	Data	Verificato	Data	Approvato	Data	Autorizzato Data
A	Emessa	N. Kalle	24/03/2020	A. Fernandez	24/03/2020	P. Grass	24/03/2020	Ing. Fabio RIZZO
B	Revisione e segnalazione ITI	N. Kalle	23/03/2020	A. Fernandez	23/03/2020	P. Grass	23/03/2020	Ing. Fabio RIZZO

File: IF26.1.2.E.ZZ.BZ.GA.02.0.008.B.dwg n. Elab.: 23/03/2020