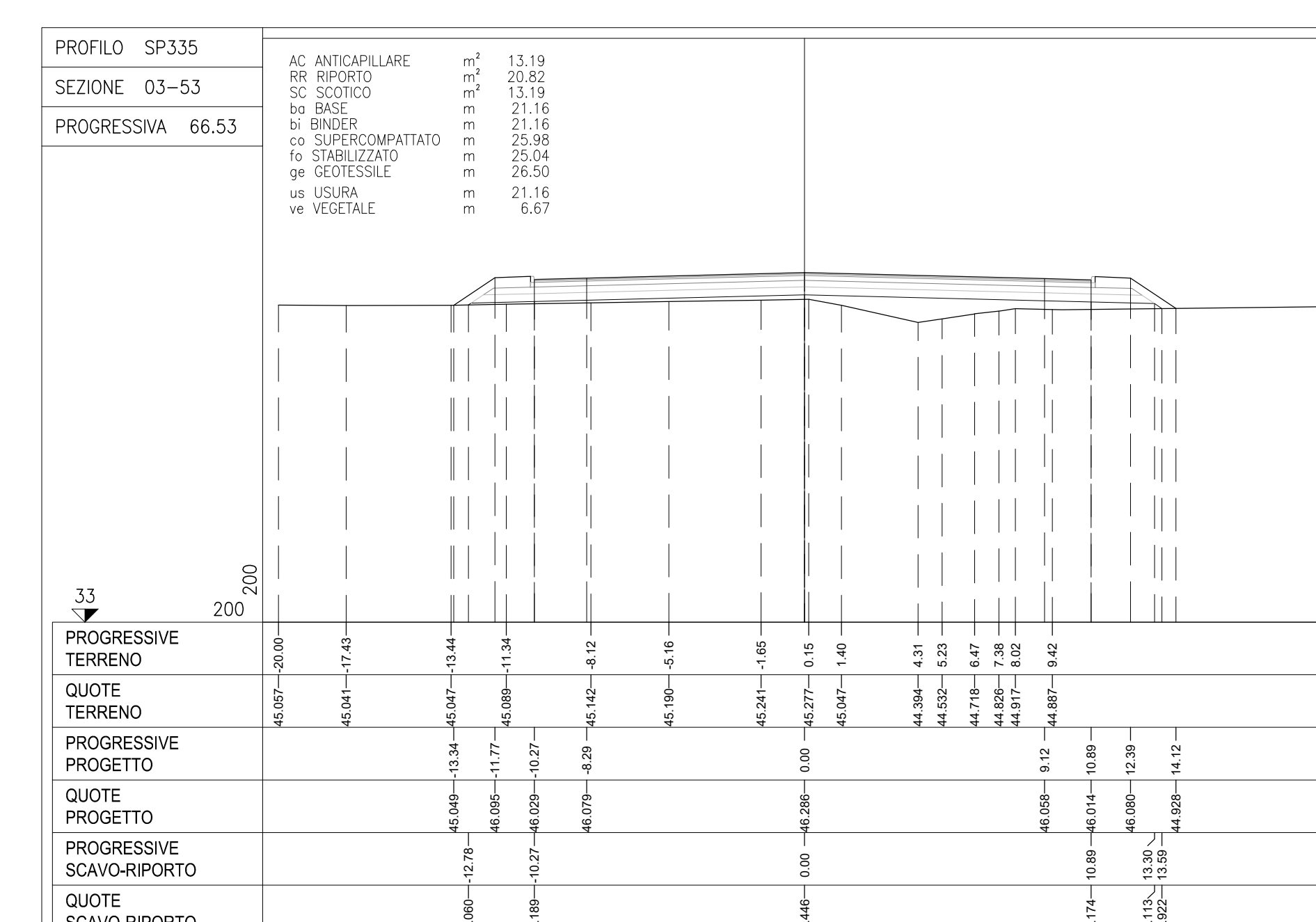
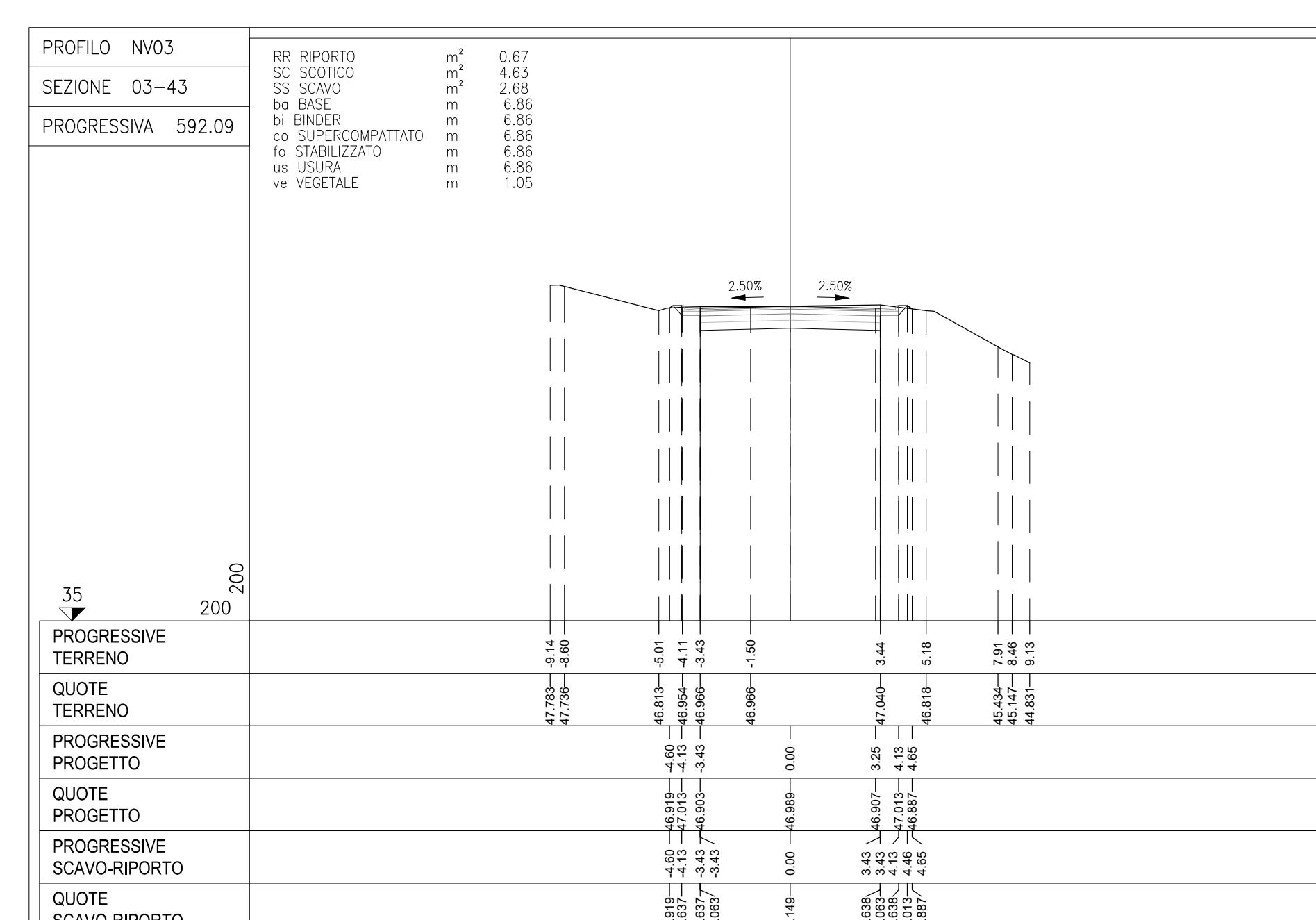
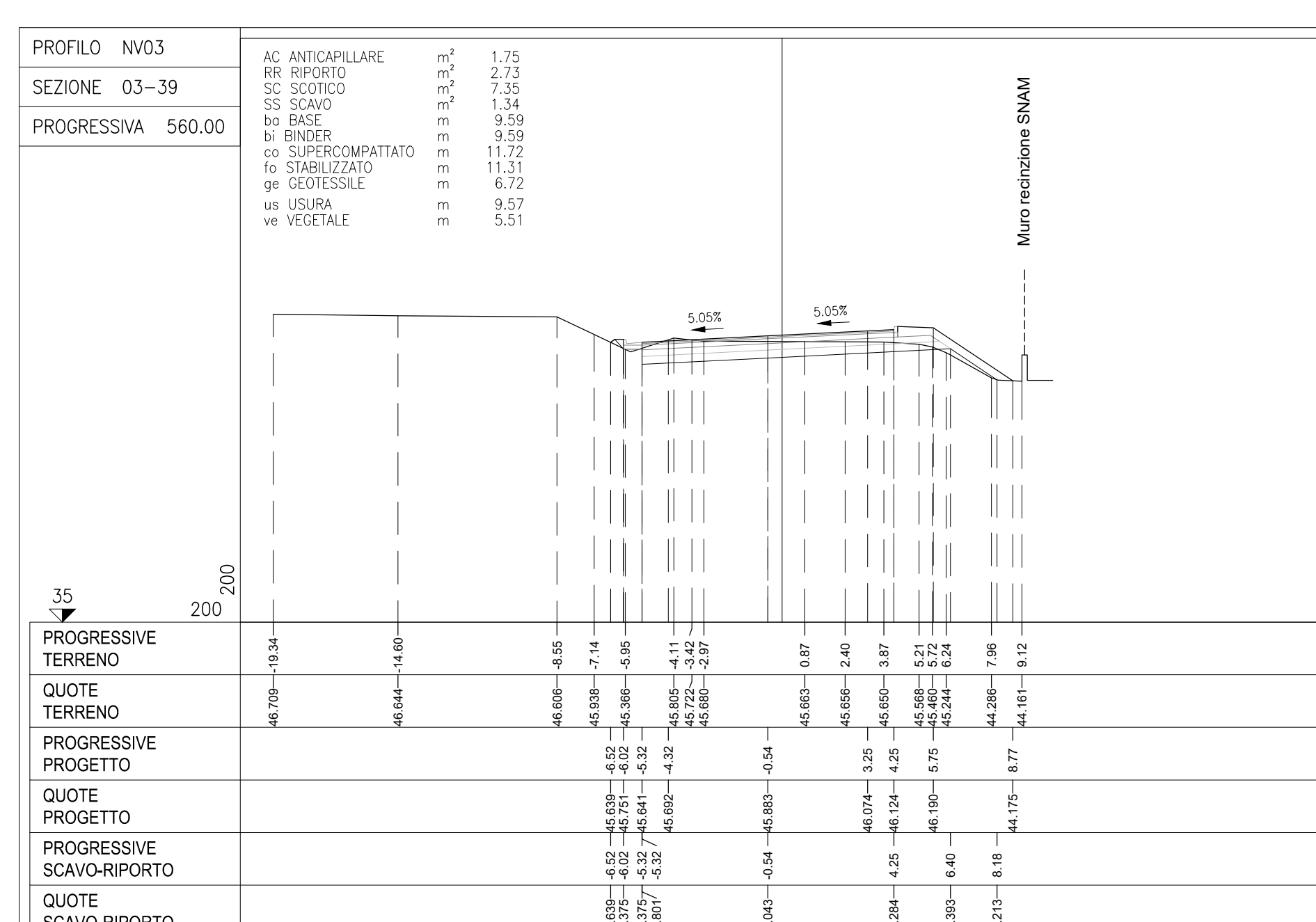
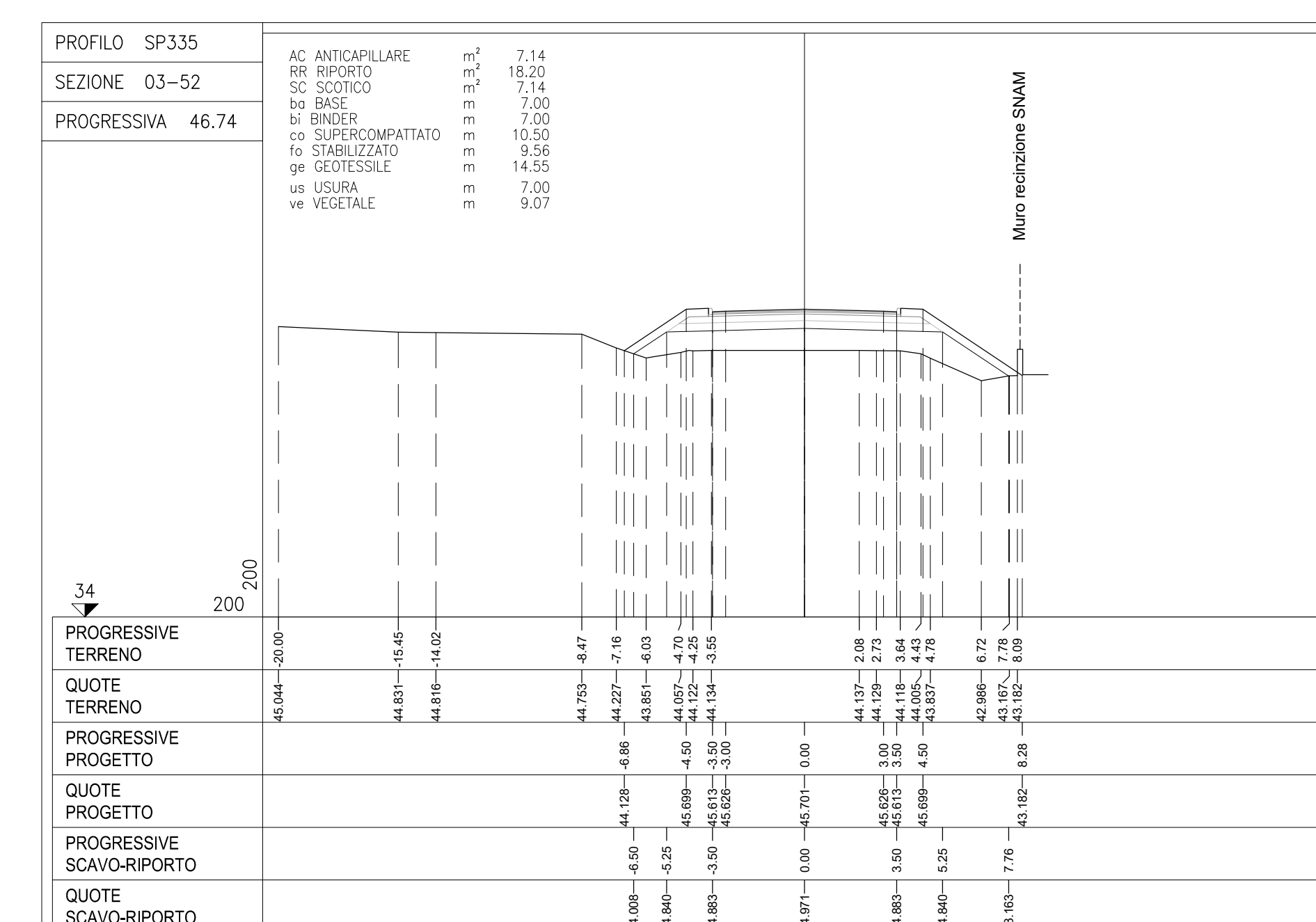
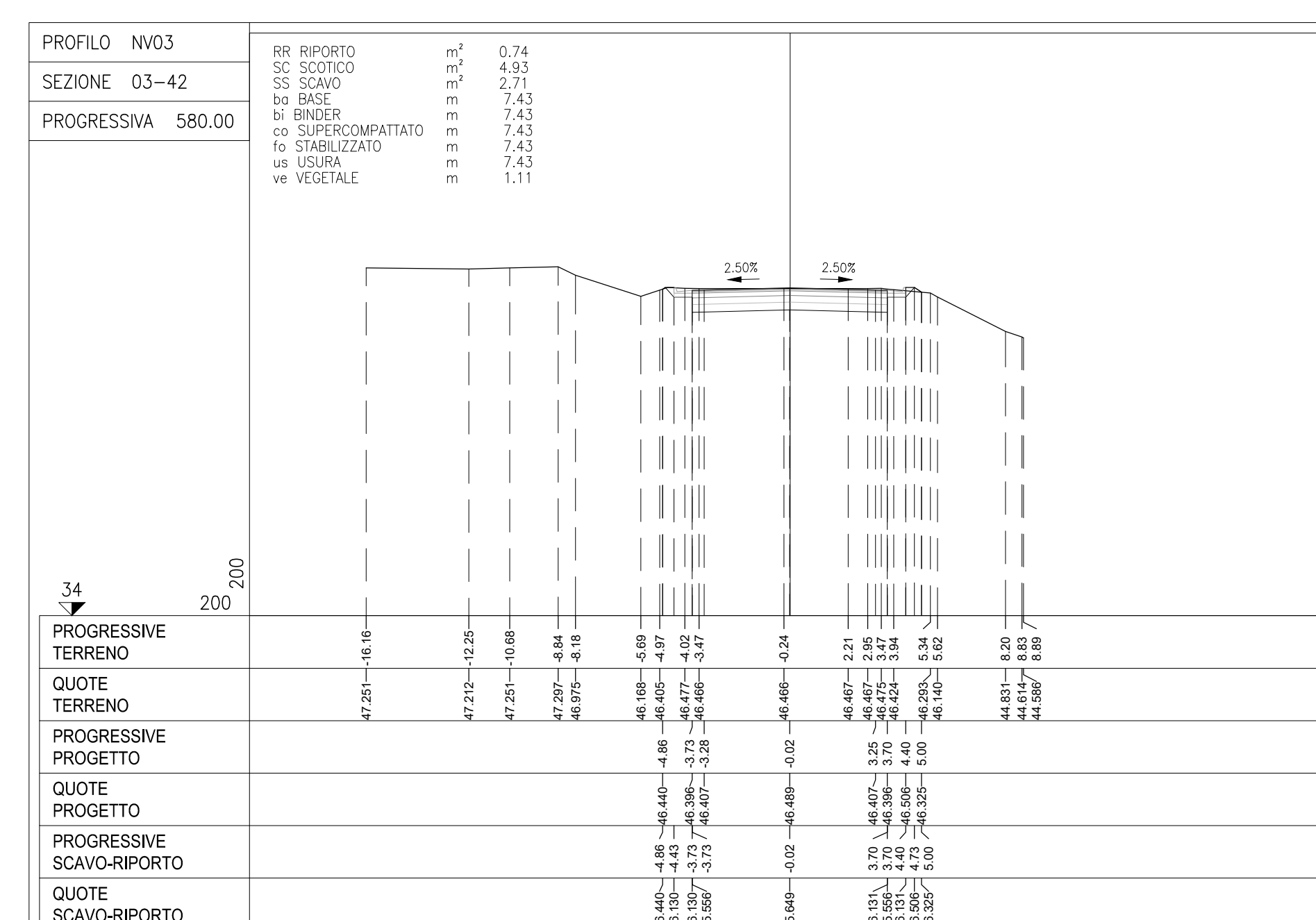
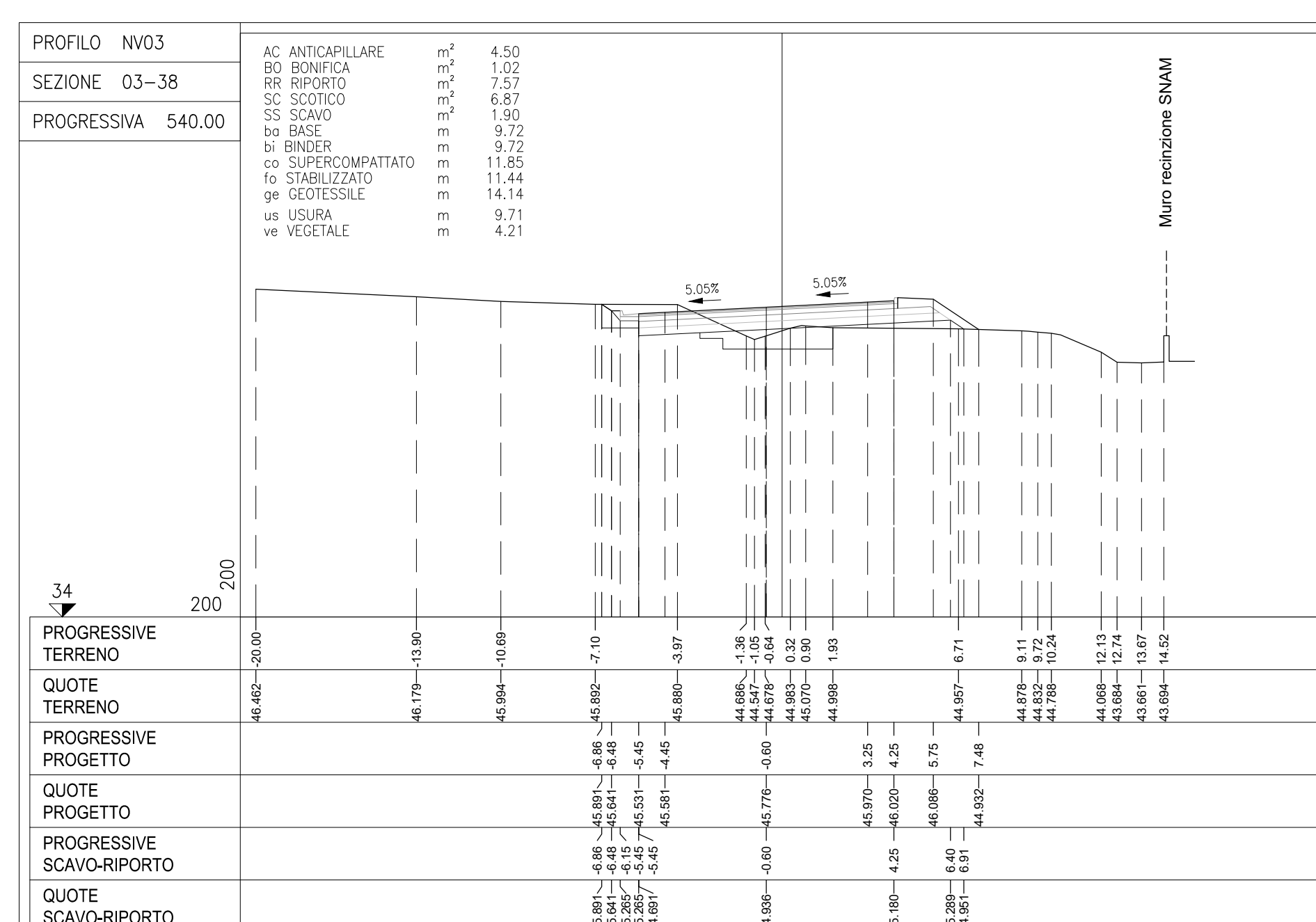
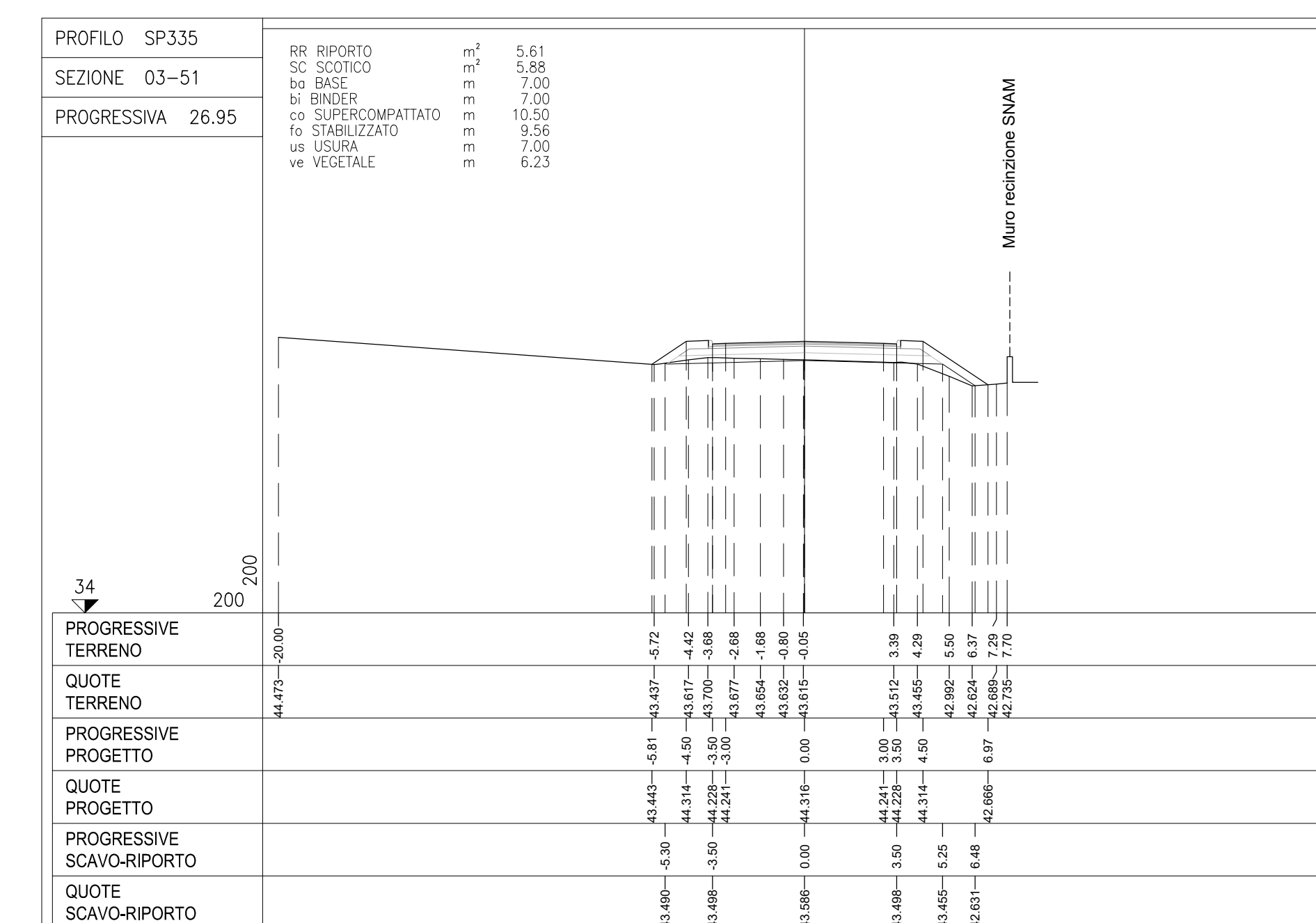
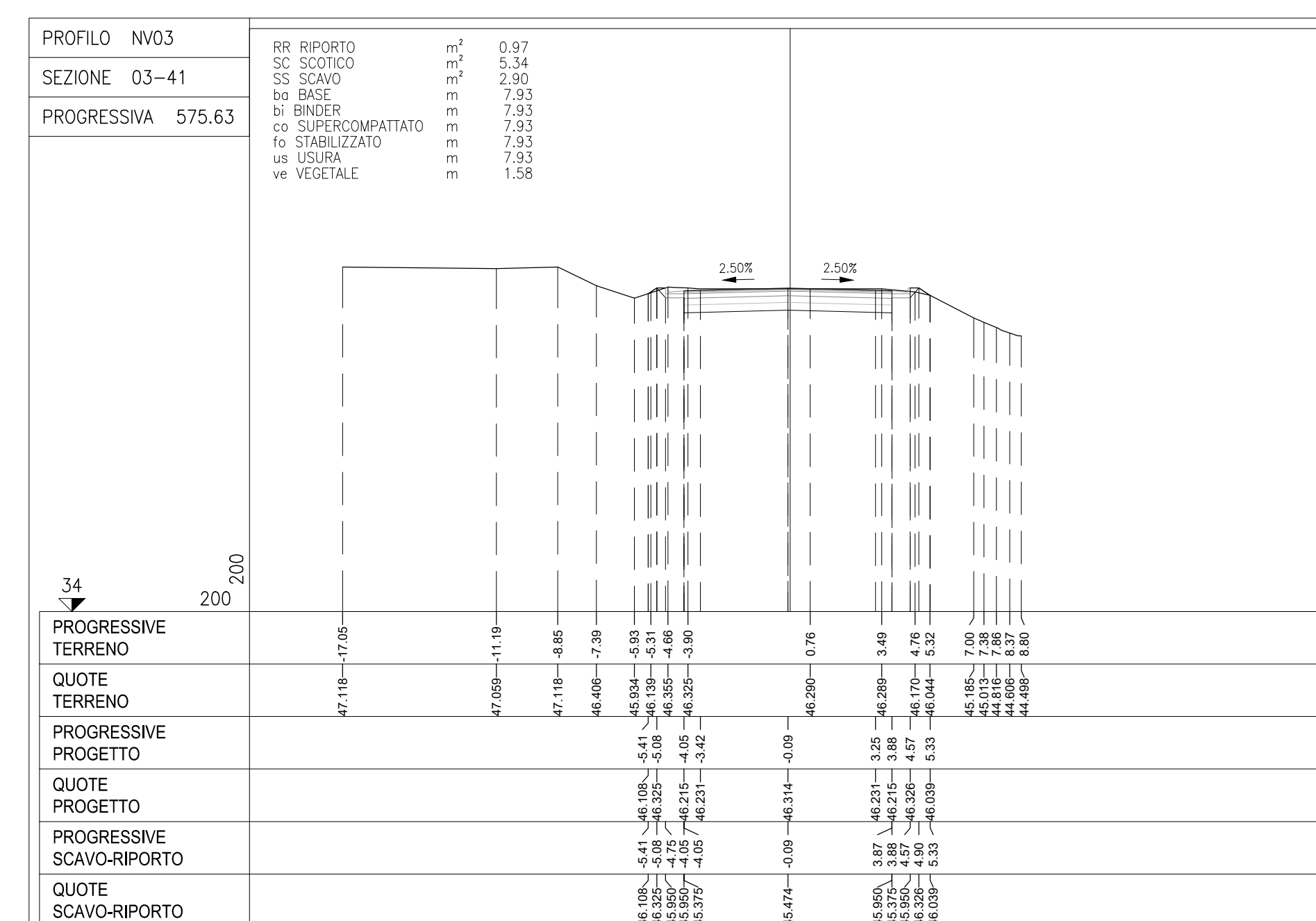
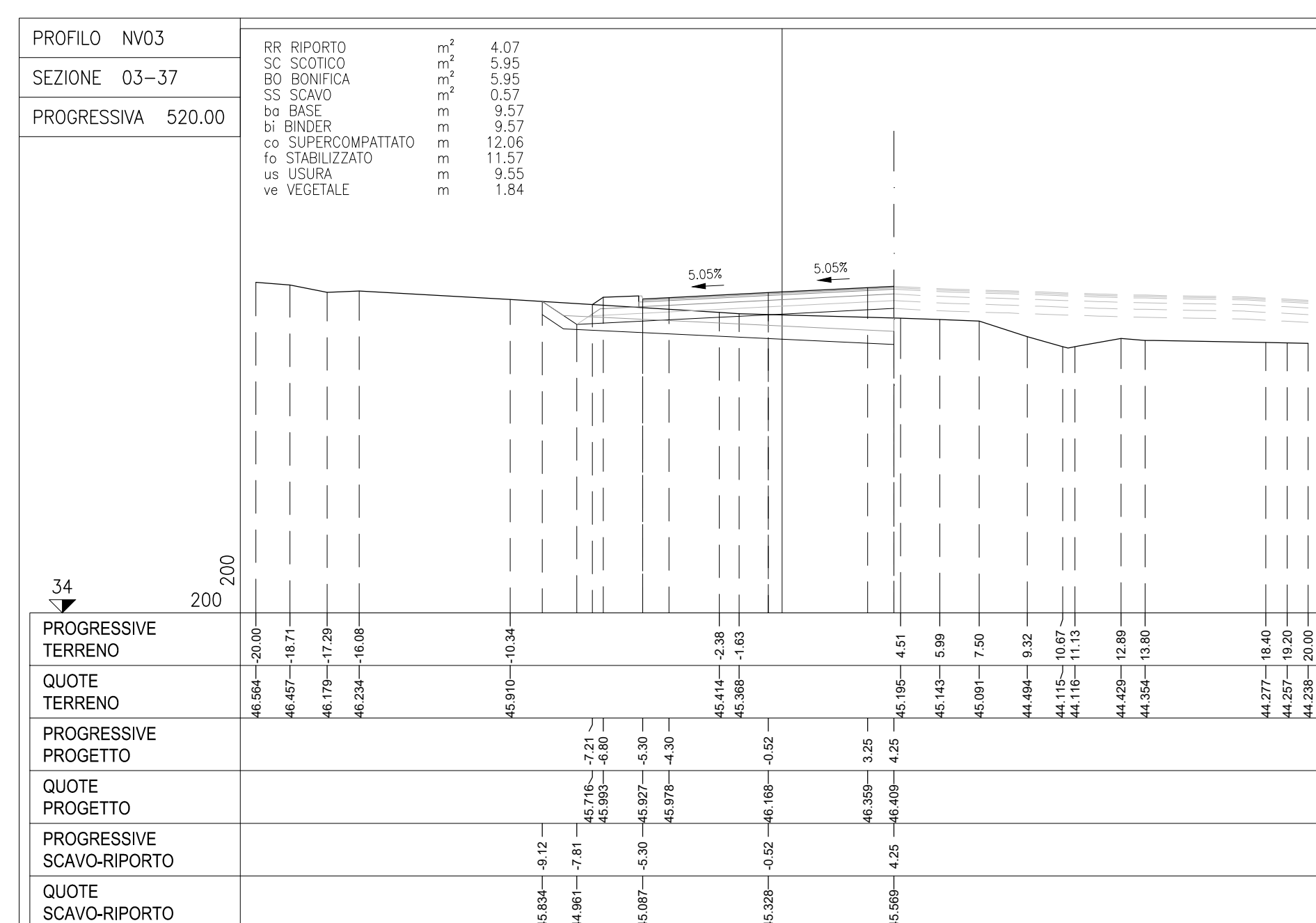
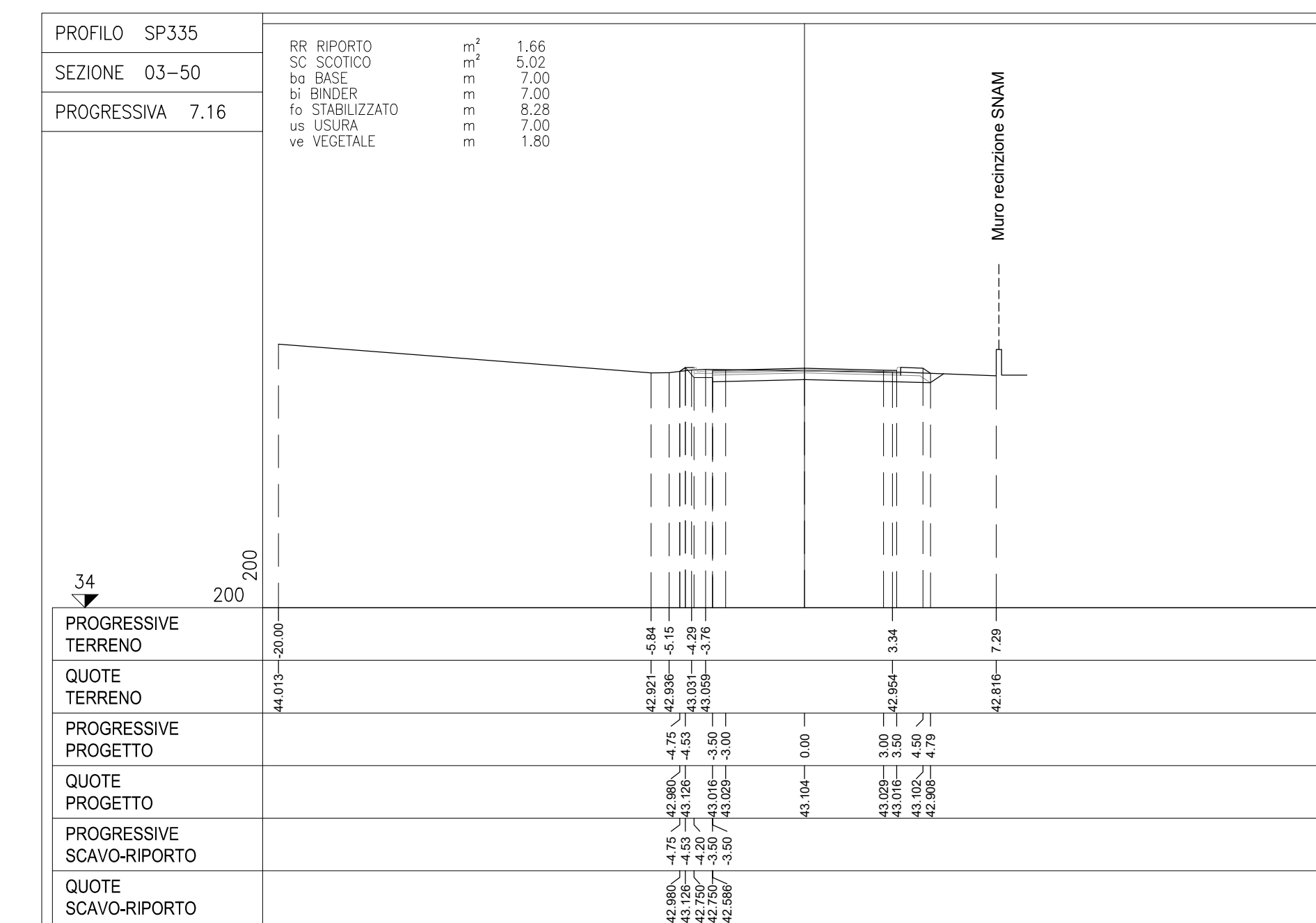
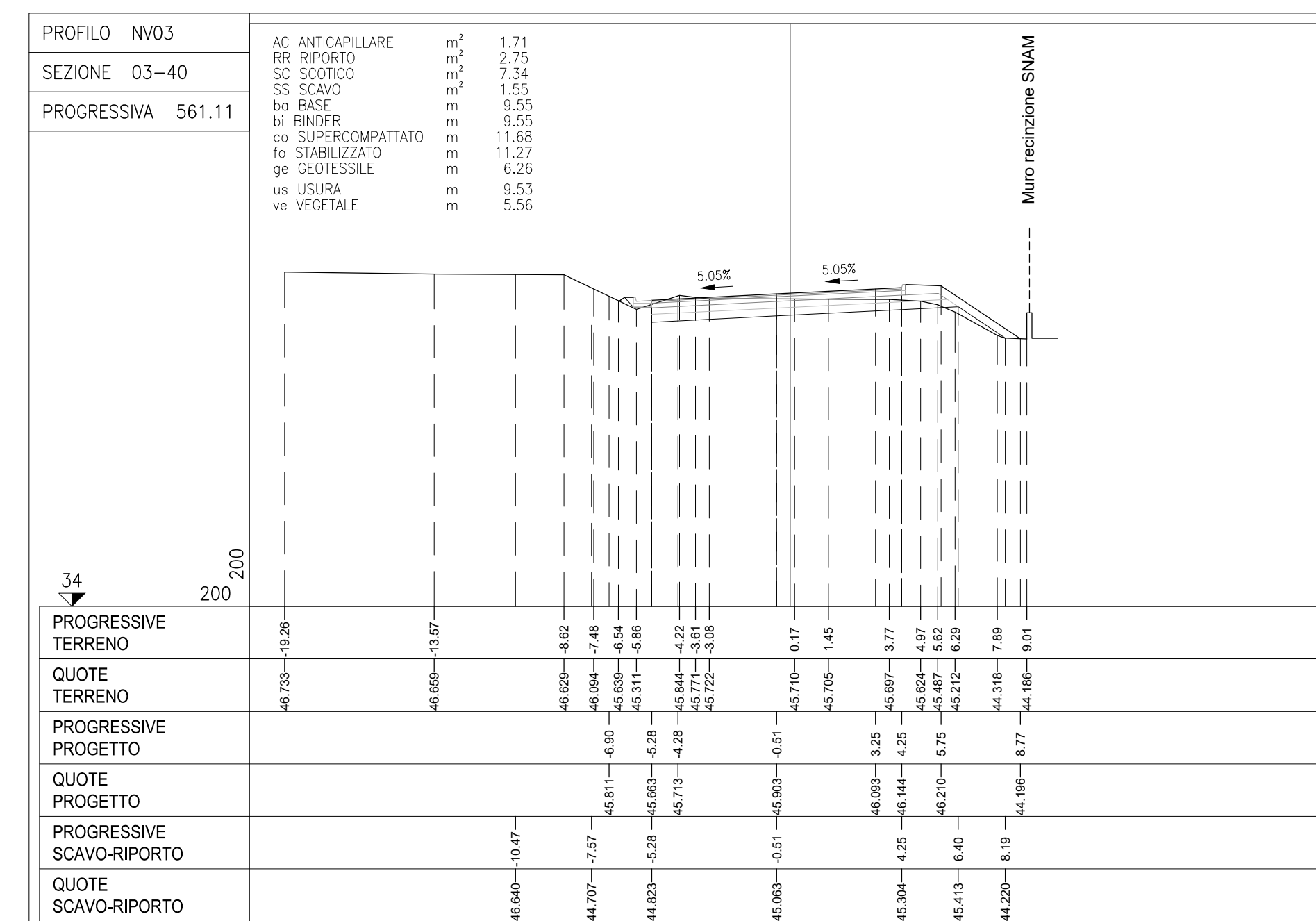
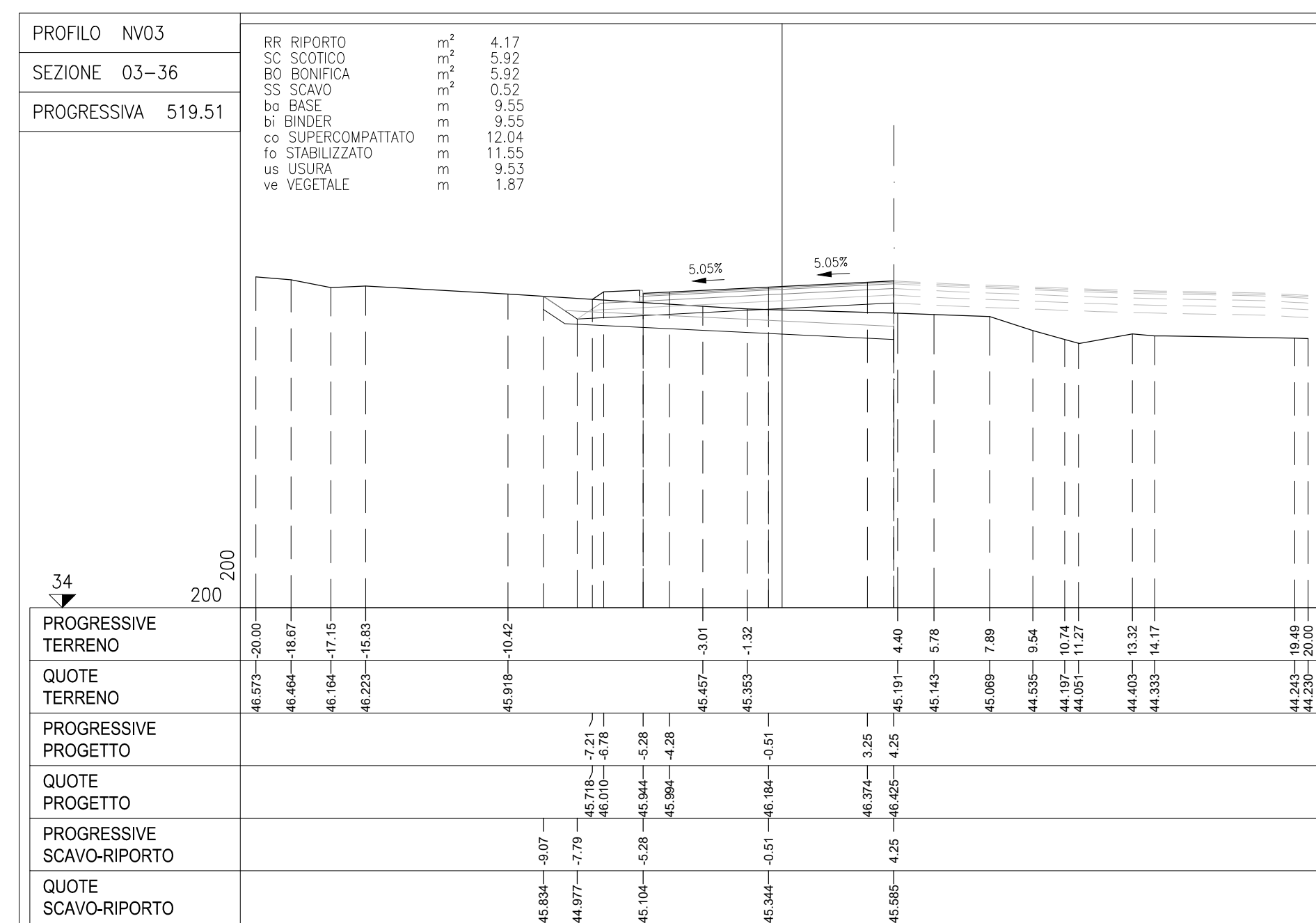


# NV03

# RACCORDO EX SP



COMMITTENTE:  **RFI**  
GRUPPO FERROVIARIO ITALIANO

DIREZIONE LAVORI:  **ITALFERR**  
GRUPPO FERROVIARIO ITALIANO

APPALTATORE:  **PIZZAROTTI**  **Gibella**  **ITINERA**  **SALCFI**  **EdINFRASTRUTTURE**

PROGETTAZIONE:	PROGETTISTA:	DIRETTORE DELLA PROGETTAZIONE:
RAI	Prof. Ing. Andrea Del Grosso	Ing. PIERGIORGIO GRASSO

**PROGETTO ESECUTIVO**

**ITINERARIO NAPOLI-BARI**  
**RADDOPPIO TRATTA CANCELLO - BENEVENTO**  
**II LOTTO FUNZIONALE FRASSO TELESINO - VITULANO**  
**I LOTTO FUNZIONALE FRASSO TELESINO - TELESE**

VIABILITA' NV03 - S.P. 110 dal km 19+630 al km 19+164  
Societa' Ebbwershals - Tav. 5 di 5

APPALTATORE:  **RFI**  
L. DIRETTORE:  **Pizzarotti**  
Ing. G. Del Grosso

SCALA: 1:200

COMMESSA	LOTTO	FASE	ENTE	TIPO DOC.	OPERADISCIPLINA	PROGR.	REV.
IF26	12	E	Z	W	NV0100	005	B

Rev.	Descrizione	Redatto	Data	Verificato	Data	Approvato	Data	Adottato Data
A	DEFINIZIONE	Mano Verdone	24/03/2024	Armando	24/03/2024	Pierluigi Grassi	24/03/2024	Prof. Ing. A. Del Grosso
B	Revisione a seguito di sopralluogo	Mano Verdone	25/03/2024	Armando	25/03/2024	Pierluigi Grassi	25/03/2024	Prof. Ing. A. Del Grosso

File: IF26.13.E.ZZ.WB.NV.03.0.0.005.B.dwg 11. Etab -