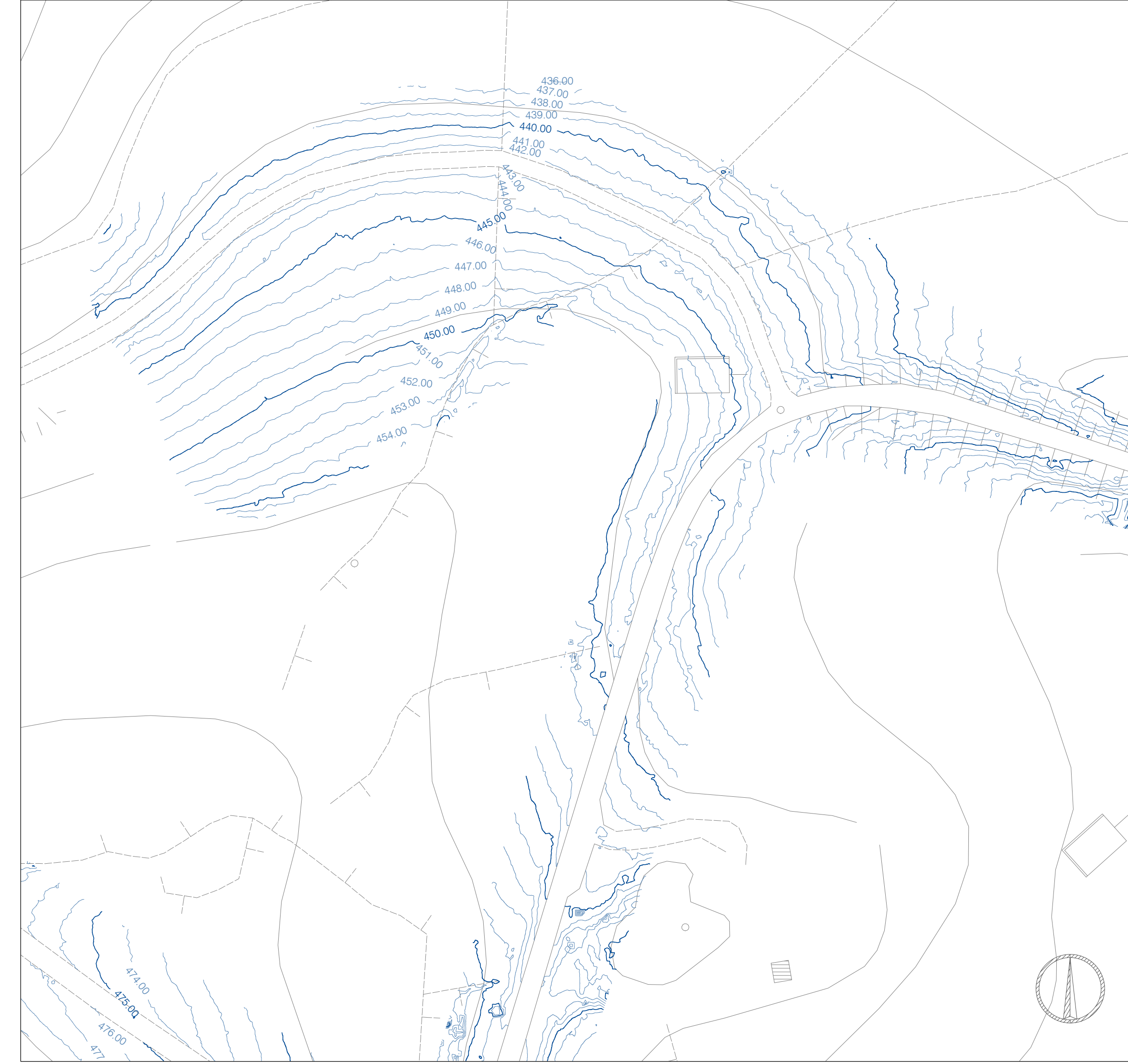
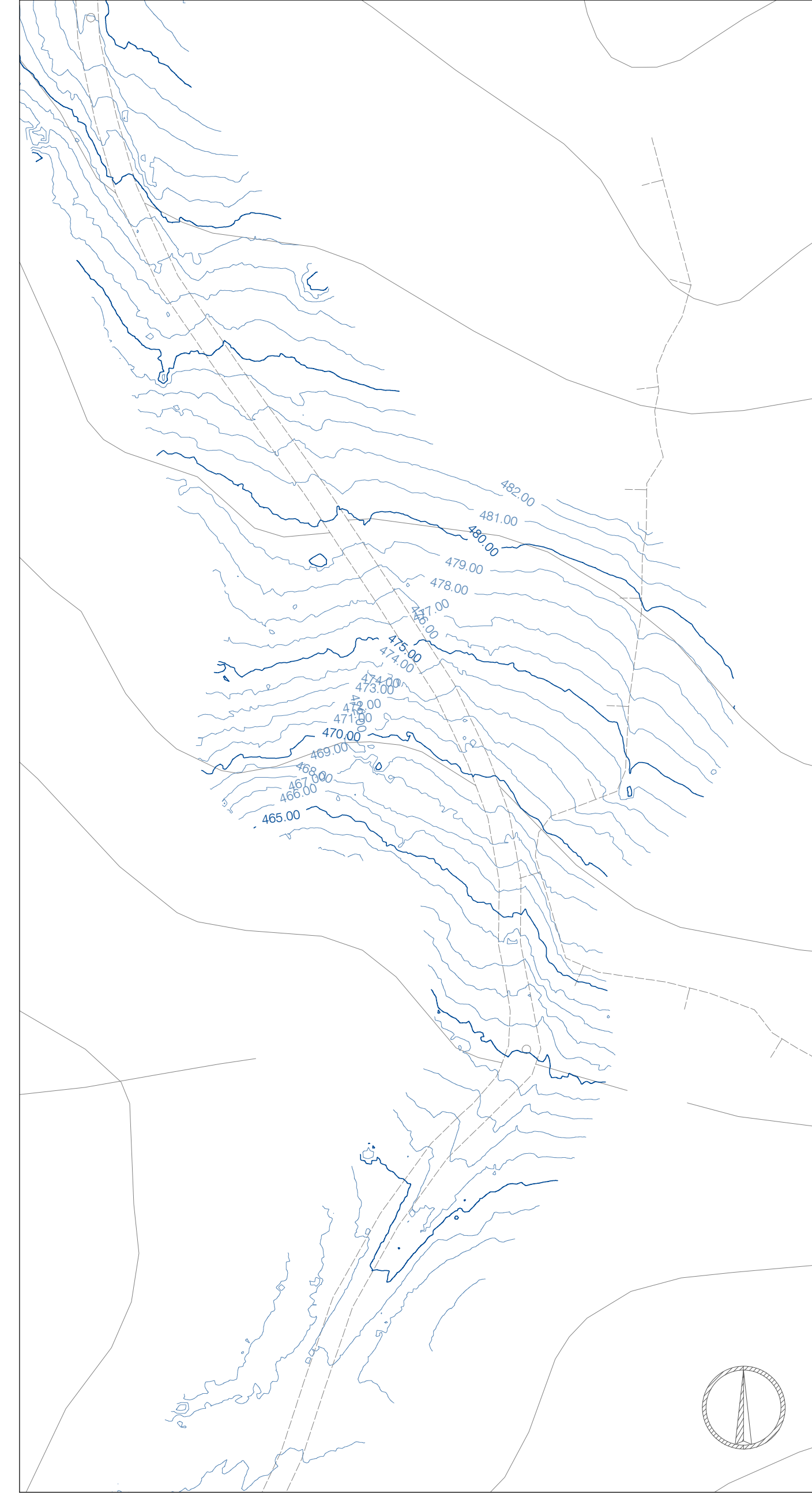


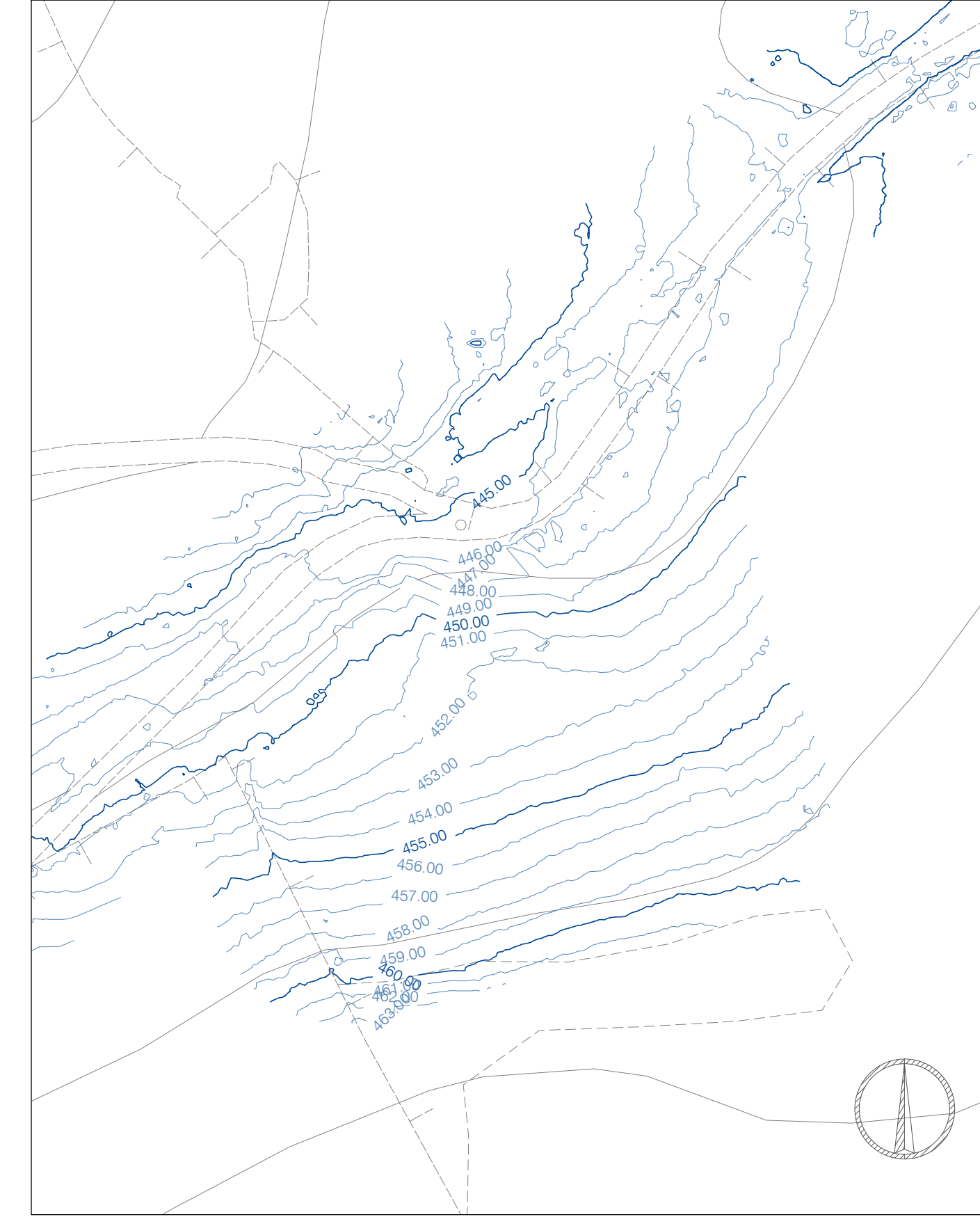
QUADRO 10



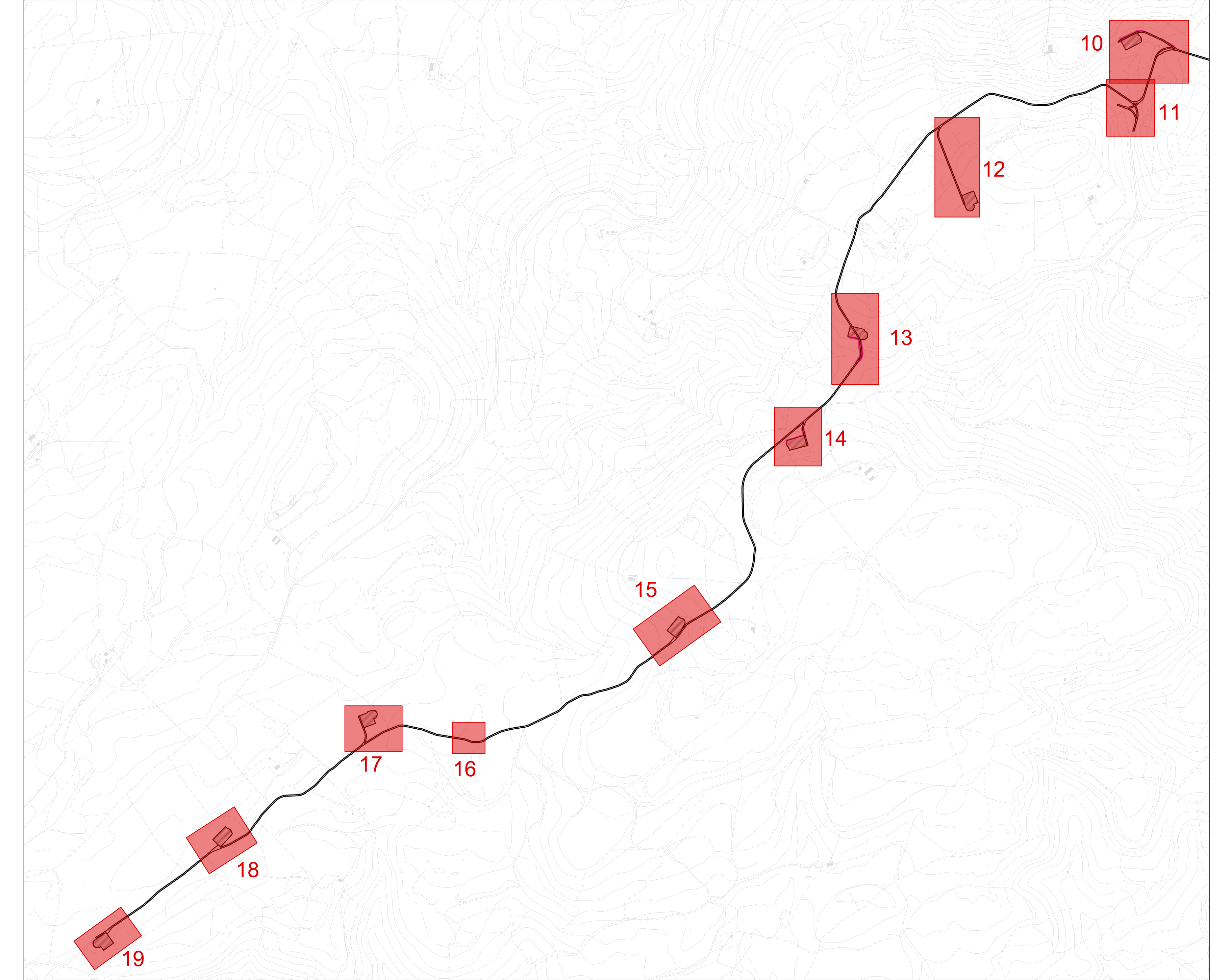
QUADRO 13



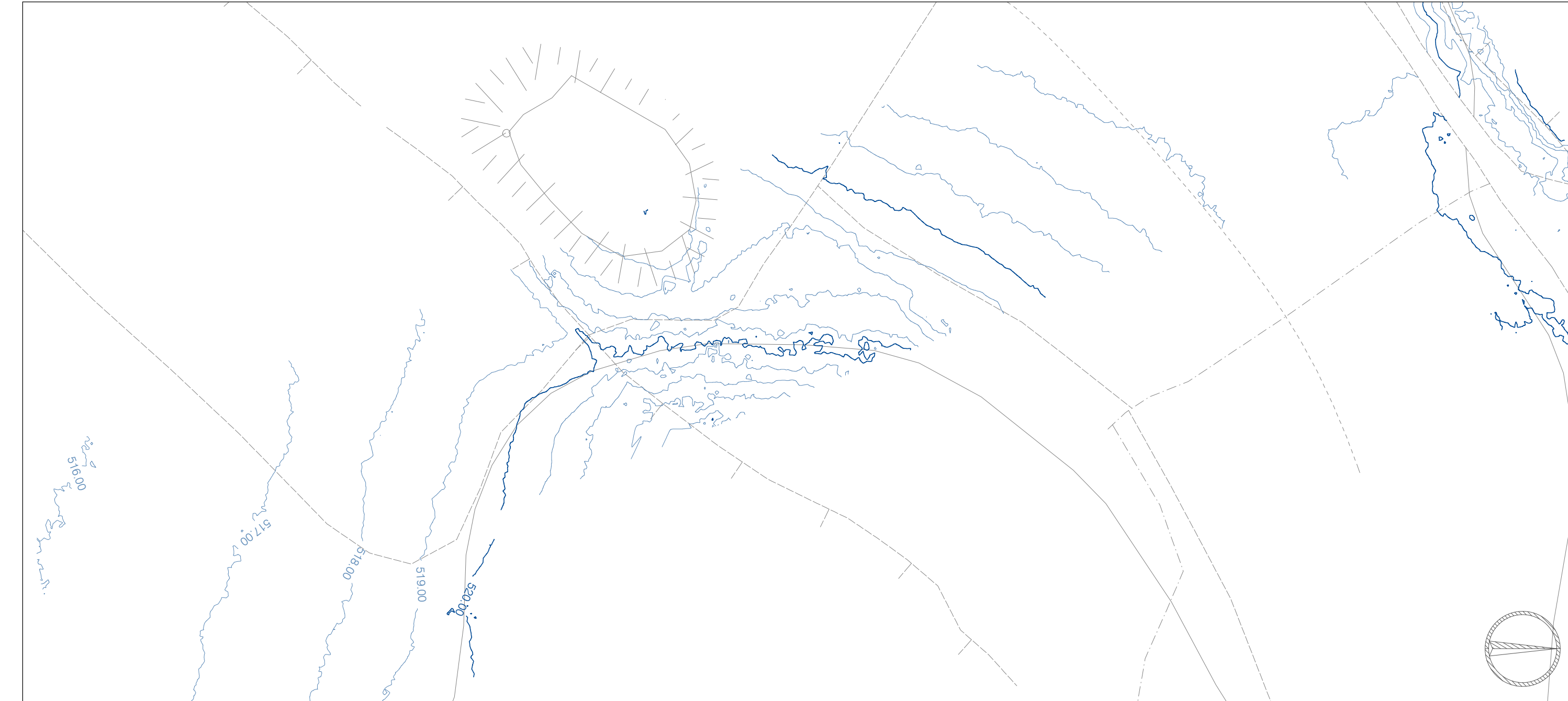
QUADRO 14



PLANIMETRIA DI RIFERIMENTO - SCALA 1:10.000



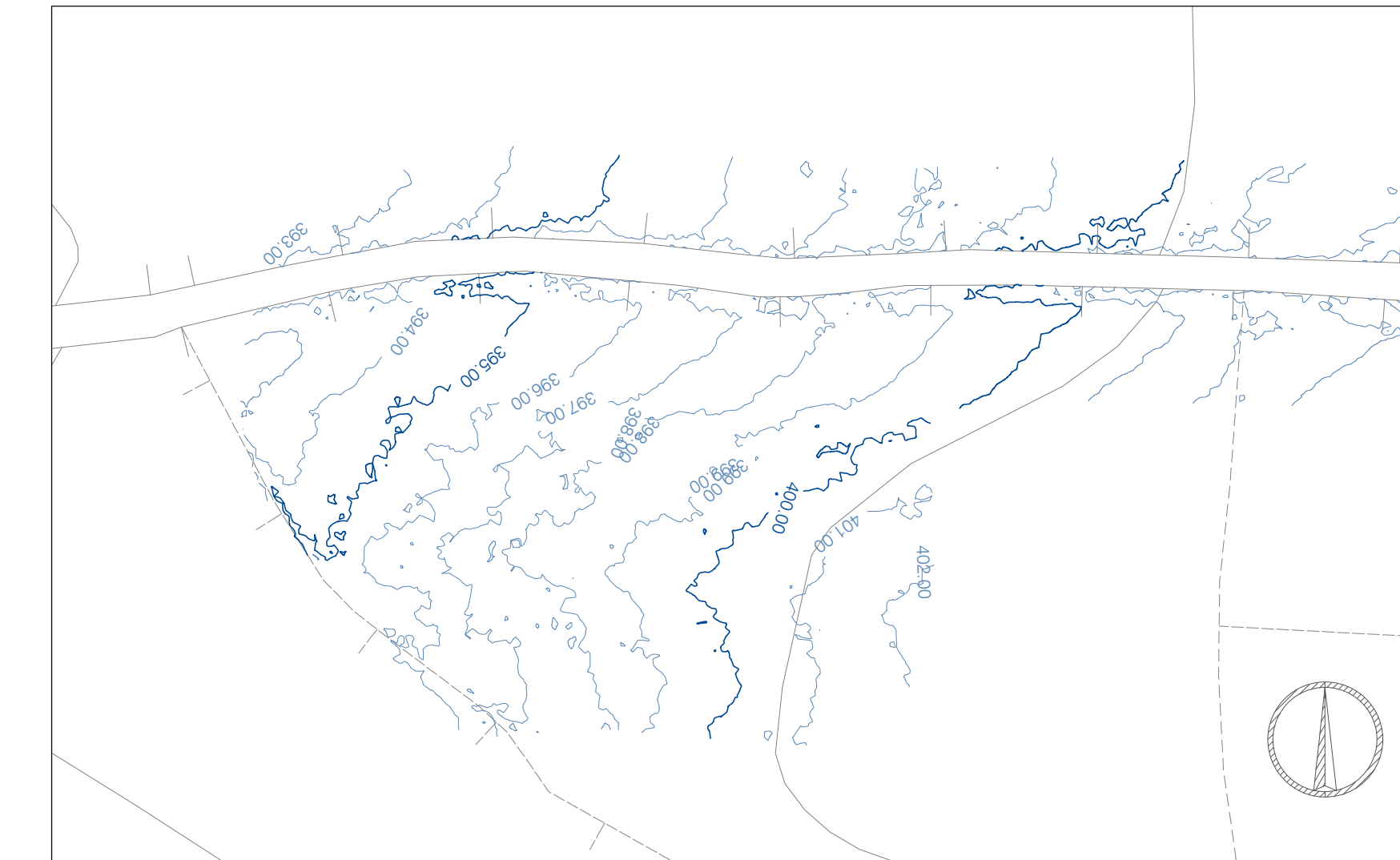
QUADRO 12



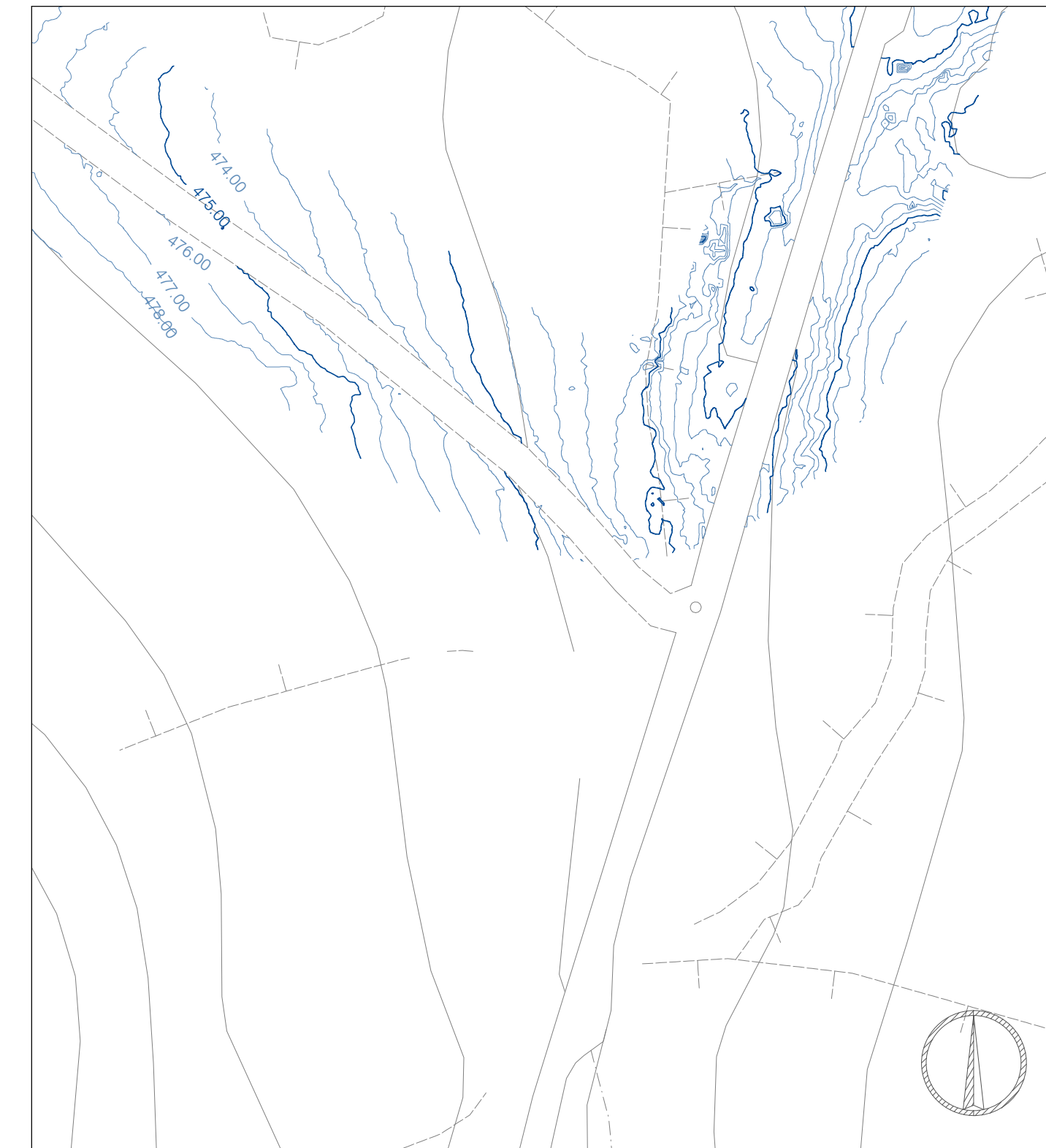
QUADRO 15



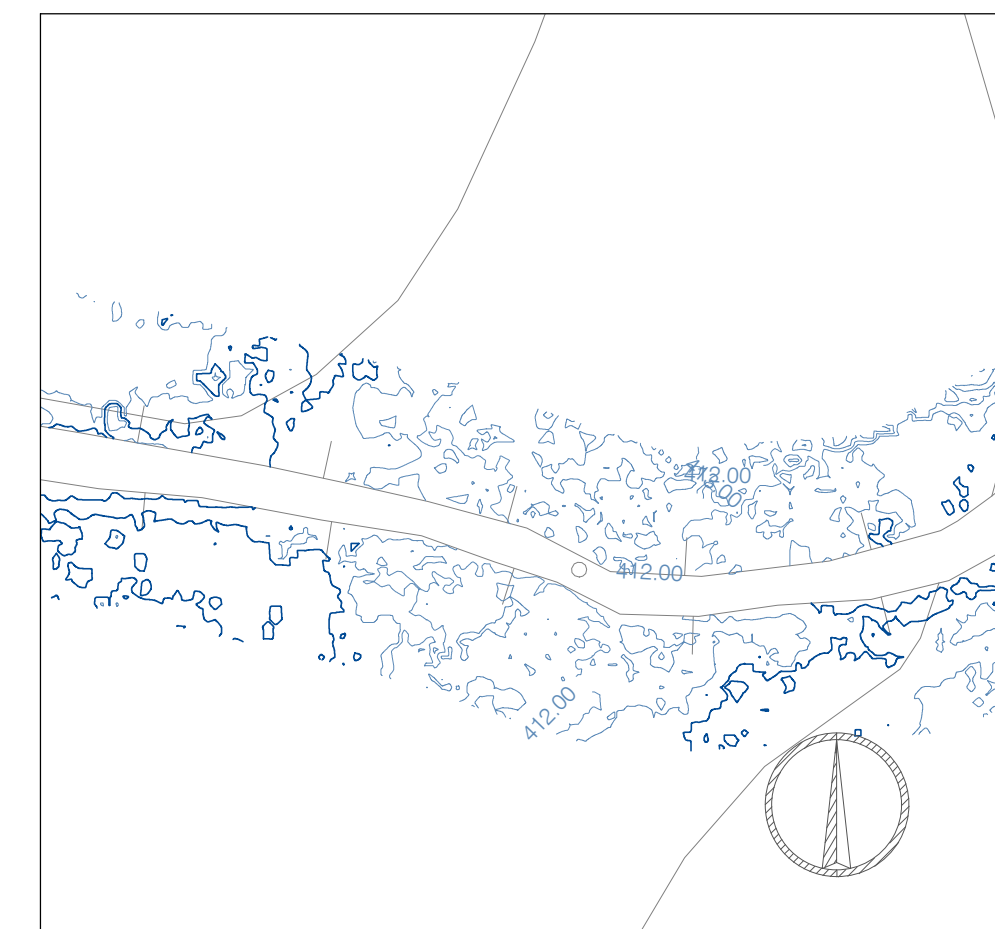
QUADRO 19



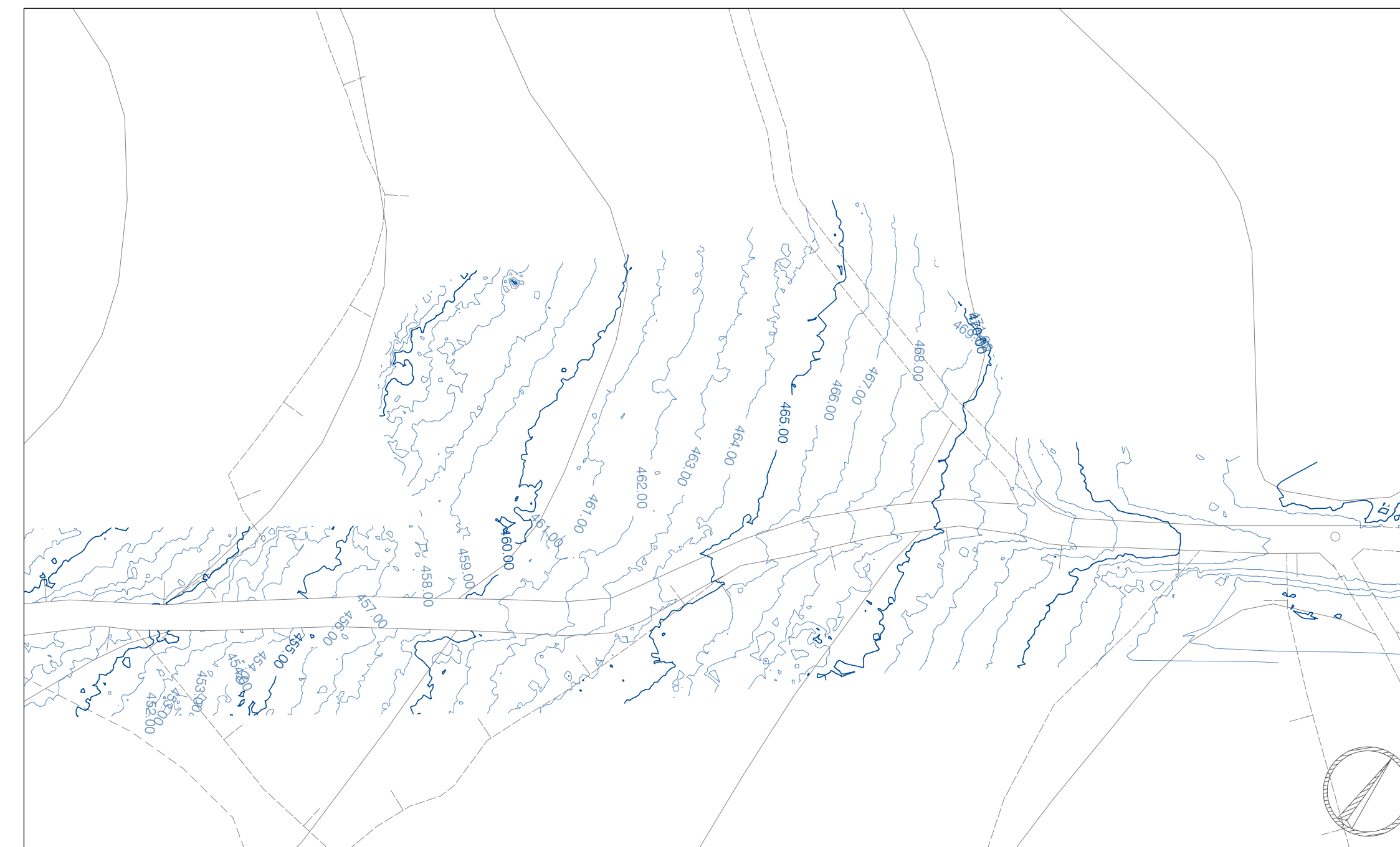
QUADRO 11



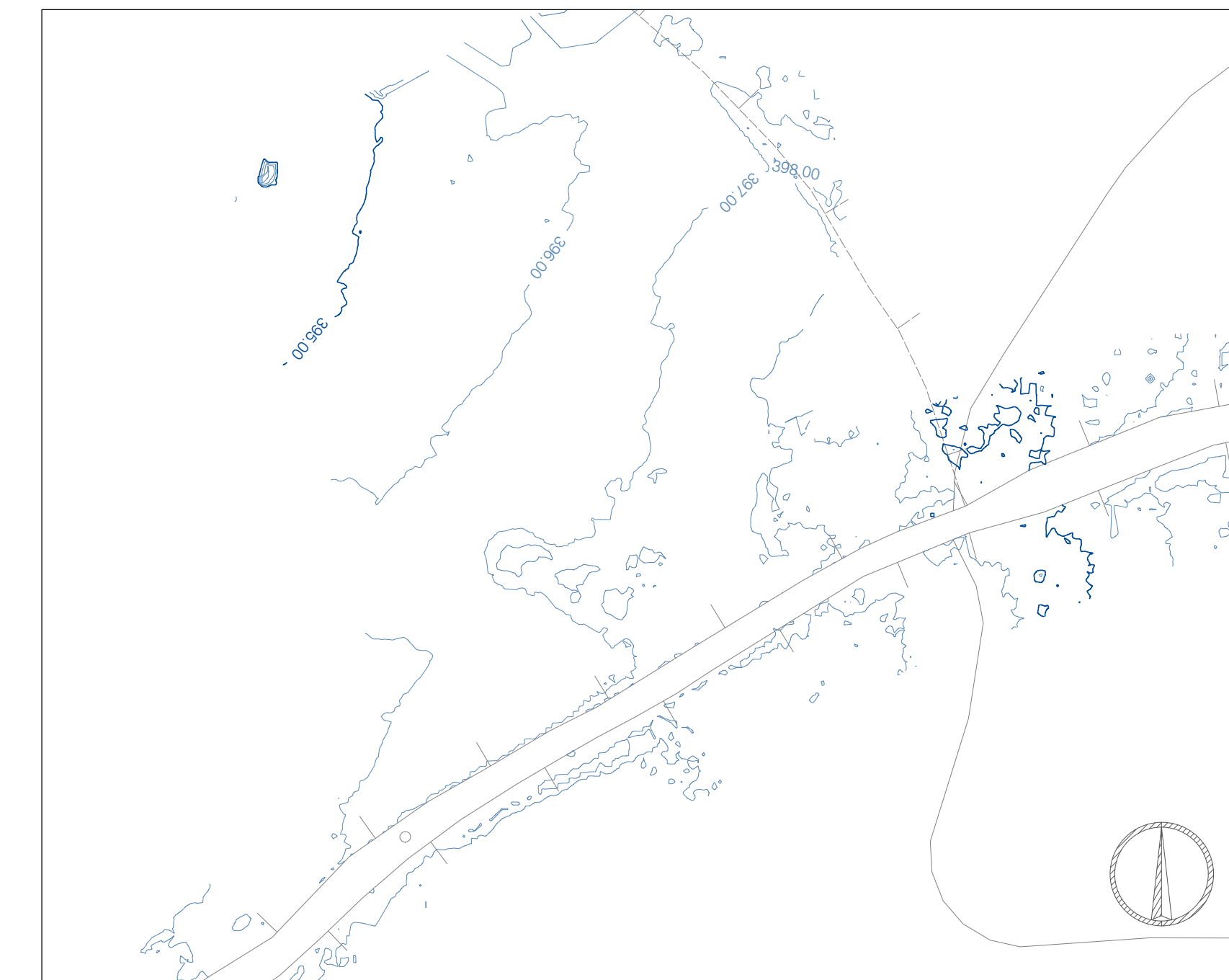
QUADRO 16



QUADRO 18



QUADRO 17



**LEGENDA**

- Curves di livello direttrici equidistanza 5 m
- Curves di livello normali equidistanza 1 m

<p>Comitente: <b>RWE</b> RWE RENEWABLES ITALIA S.R.L.          via Andrea Doria, 41/G - 00192 Roma          P.IVA/C.F. 06400370968</p>					
<p>Titolo del Progetto: <b>PARCO EOLICO "ALAS"</b>          - Comuni di Ittiri e Villanova Monteleone (SS) -</p>					
<p>Documento: <b>PROGETTO DEFINITIVO OPERE CIVILI</b> N° Documento: PEALAS-P05-030</p>					
ID PROGETTO: PEALAS	DISCIPLINA: P	TIPOLOGIA:	FORMATO: A0		
<p>Elaborato: <b>Viabilità ed aree di cantiere stato di fatto - Piano quotato b</b></p>					
FOGLIO:	SCALA: 1:5.000	Nome file: PEALAS_P05_030_Viabilità ed aree di cantiere stato di fatto - Piano quotato b			
<p>A cura di:  </p>		<p>Progettista:          Ing. Giuseppe Frongia</p>			
<p>Gruppo di progettazione:          Ing. Giuseppe Frongia (coordinatore e responsabile)          Ing. Marianna Barbarino          Ing. Enrica Balzella          Ing. Antonio Dedoni          Ing. Gianluca Melis          Dott. Emanuela Spiga          Dott. Andrea Caspai          Dott. Matteo Tatti</p>					
Rev.	Data Revisione	Descrizione Revisione	Redatto	Controllato	Approvato
01	15/07/2020	PRIMA EMISSIONE	IAT	GF	RWE