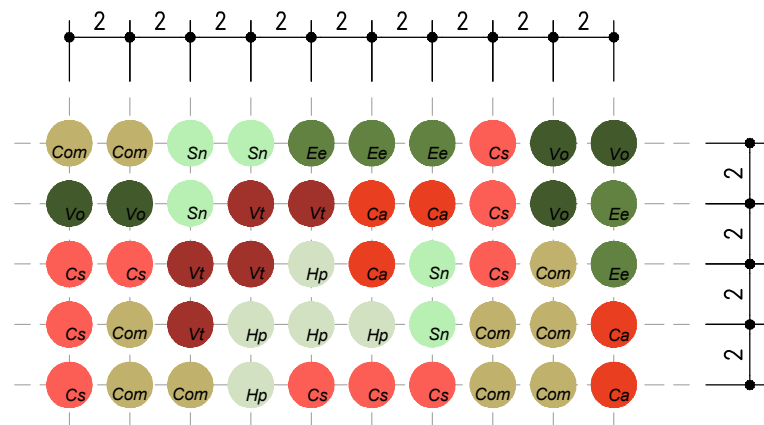


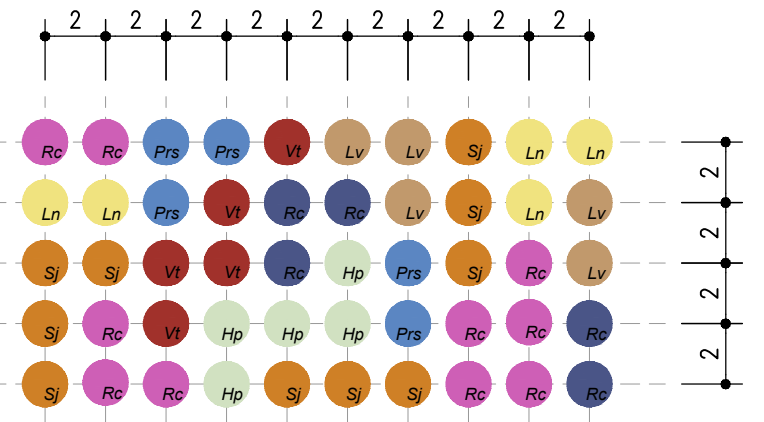
IAN - INVERDIMENTO ARBUSTIVO - ESPOSIZIONE PREVALENTE A NORD SCARPATE ASPI
Arbusti vaso 18-24 cm



ARBUSTI

- Sambucus nigra 10% Sn
Cornus mas 20% Com
Cornus sanguinea 20% Cs
Viburnum tinus 10% Vt
Viburnum opulus 10% Vo
Euonymus europaeus 10% Ee
Corylus avellana 10% Ca
Hypericum perforatum 10% Hp

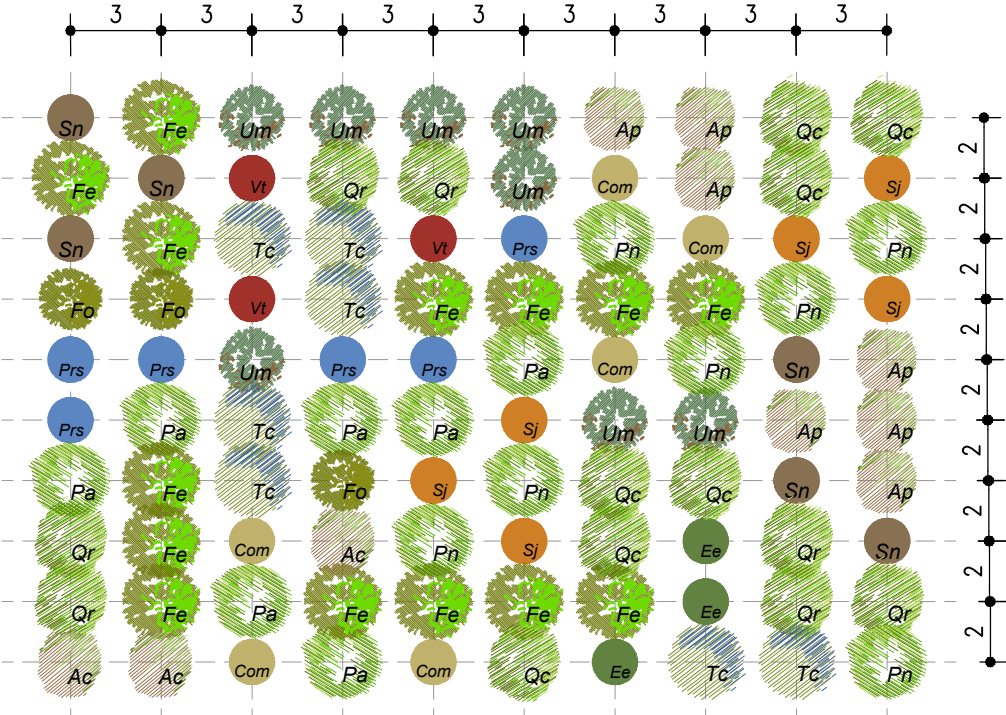
IAS - INVERDIMENTO ARBUSTIVO - ESPOSIZIONE PREVALENTE A SUD SCARPATE ASPI
Arbusti vaso 18-24 cm



ARBUSTI

- Rosa canina 20% Rc
Spartium junceum 20% Sj
Ligustrum vulgare 10% Lv
Viburnum tinus 10% Vt
Prunus spinosa 10% Prs
Laurus nobilis 10% Ln
Rhamnus cathartica 10% Rc
Hypericum perforatum 10% Hp

RIMI - RIMBOSCHIMENTO DI MITIGAZIONE ECOLOGICA (70% - 30%)
Alberi e arbusti forestali h >100 cm



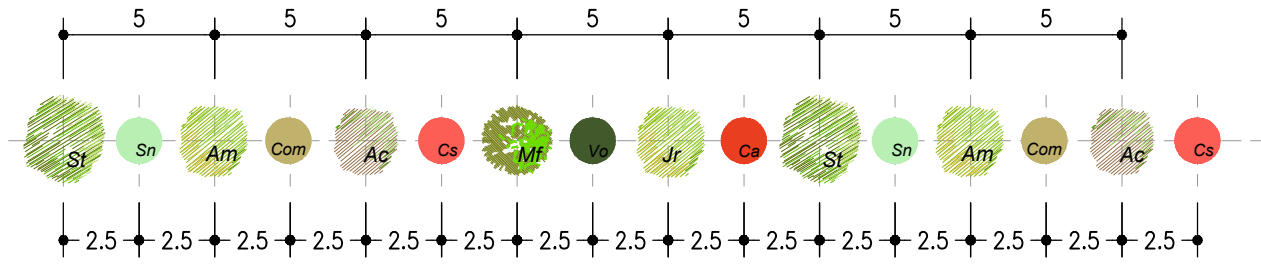
ALBERI (70%)

- Quercus robur (I) 10% Qr
Populus alba (I) 10% Pa
Ulmus minor (II) 10% Um
Fraxinus excelsior (II) 20% Fe
Tilia cordata (II) 10% Tc
Acer platanoides (I) 10% Ap
Fraxinus ornus (II) 5% Fo
Quercus cerris (I) 10% Qc
Populus nigra (I) 10% Pn
Acer campestre (II) 5% Ac

ARBUSTI (30%)

- Sambucus nigra 20% Sn
Cornus mas 20% Com
Prunus spinosa 20% Prs
Spartium junceum 20% Sj
Viburnum tinus 10% Vt
Euonymus europaeus 10% Ee

FAAN - FILARE ARBOREO ARBUSTIVO - ESPOSIZIONE PREVALENTE A NORD SCARPATE ASPI
Alberi già sviluppati circ. 14-16 cm, arbusti vaso 18-24 cm



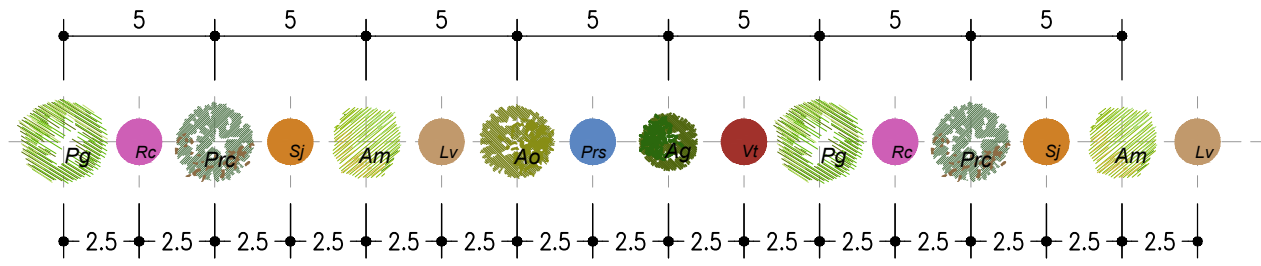
ALBERI

- Sorbus torminalis (III) 10% St
Acer monspessulanum (III) 10% Am
Acer campestre (III) 10% Ac
Malus flurbonda (III) 10% Mf
Juglans regia (I) 10% Jr

ARBUSTI

- Sambucus nigra 10% Sn
Cornus mas 10% Com
Cornus sanguinea 10% Cs
Viburnum opulus 10% Vo
Corylus avellana 10% Ca

FAAS - FILARE ARBOREO ARBUSTIVO - ESPOSIZIONE PREVALENTE A SUD SCARPATE ASPI
Alberi già sviluppati circ. 14-16 cm, arbusti vaso 18-24 cm



ALBERI

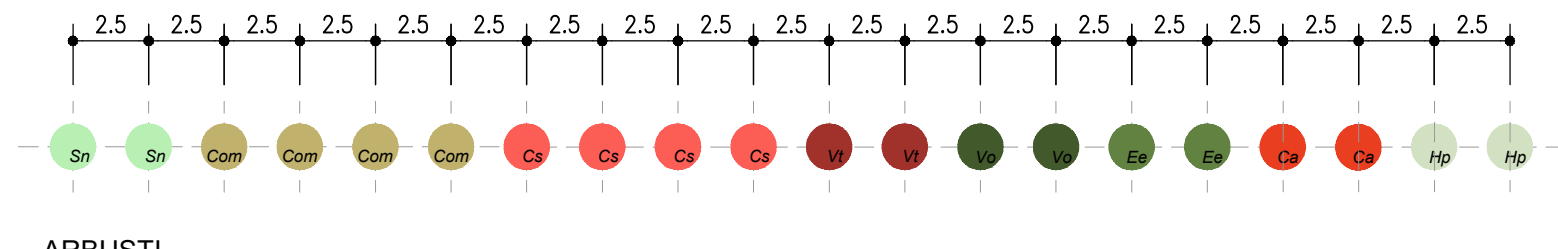
- Punica granatum (III) 10% Pg
Prunus cerasifera (III) 10% Prc
Acer monspessulanum (III) 10% Am
Acer opalus (III) 10% Ao
Alnus glutinosa (III) 10% Ag

ARBUSTI

- Rosa canina 10% Rc
Spartium junceum 10% Sj
Ligustrum vulgare 10% Lv
Prunus spinosa 10% Prs
Viburnum tinus 10% Vt

Table with columns for species, u.d.m., and various OV (0V001 to 0V008) codes. It lists various tree and shrub species and their corresponding codes for different project phases.

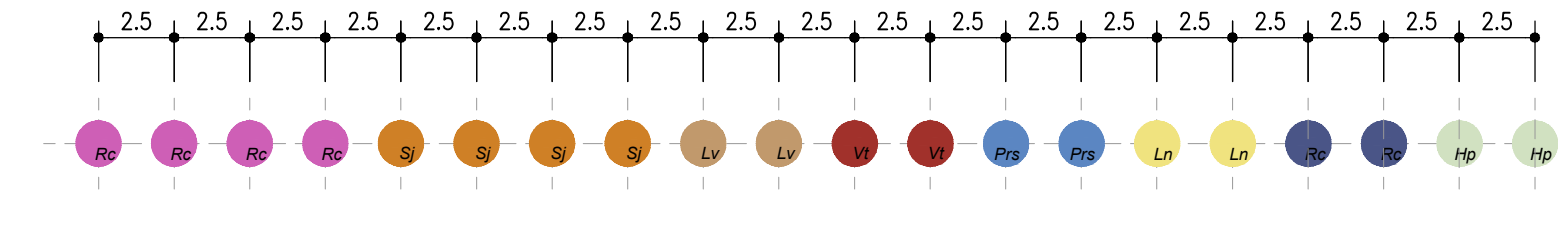
FAN - FILARE ARBUSTIVO - ESPOSIZIONE PREVALENTE A NORD SCARPATE ASPI
Arbusti vaso 18-24 cm



ARBUSTI

- Sambucus nigra 10% Sn
Cornus mas 20% Com
Cornus sanguinea 20% Cs
Viburnum tinus 10% Vt
Viburnum opulus 10% Vo
Euonymus europaeus 10% Ee
Corylus avellana 10% Ca
Hypericum perforatum 10% Hp

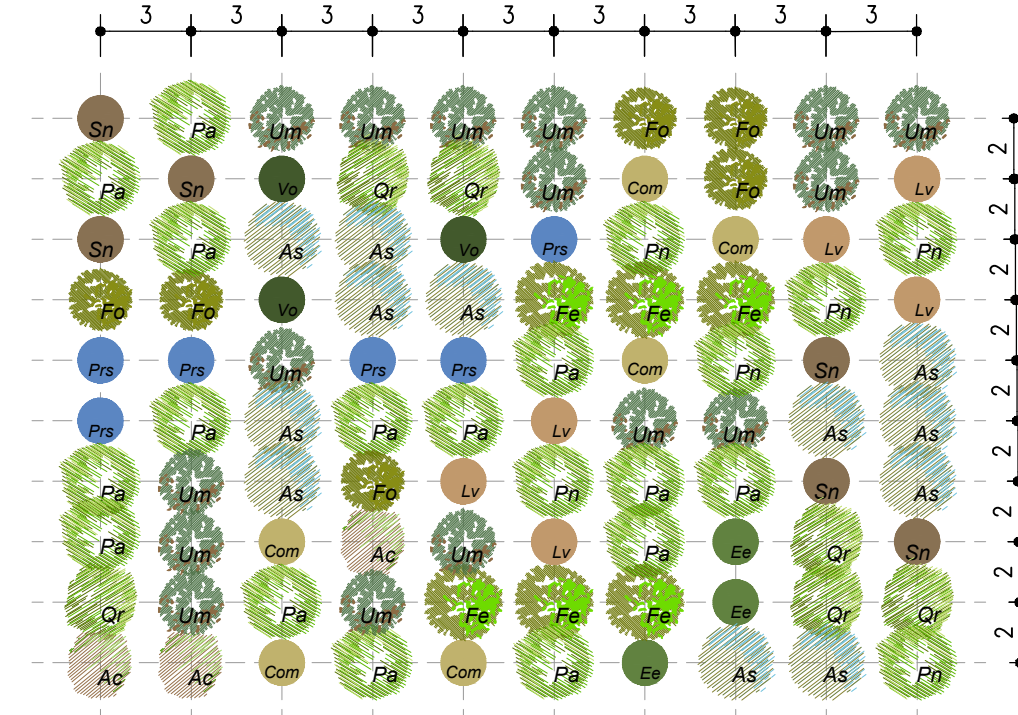
FAS - FILARE ARBUSTIVO - ESPOSIZIONE PREVALENTE A SUD SCARPATE ASPI
Arbusti vaso 18-24 cm



ARBUSTI

- Rosa canina 20% Rc
Spartium junceum 20% Sj
Ligustrum vulgare 10% Lv
Viburnum tinus 10% Vt
Prunus spinosa 10% Prs
Laurus nobilis 10% Ln
Rhamnus cathartica 10% Rc
Hypericum perforatum 10% Hp

RIMIF - RIMBOSCHIMENTO DI MITIGAZIONE ECOLOGICA FLUVIALE (70% - 30%)
Alberi e arbusti forestali h >100 cm



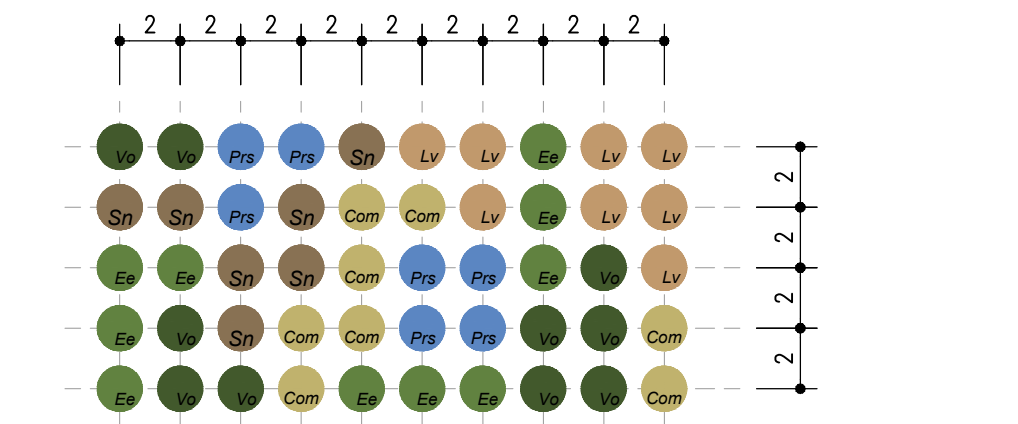
ALBERI (70%)

- Quercus robur (I) 6% Qr
Populus alba (I) 15% Pa
Ulmus minor (II) 15% Um
Fraxinus excelsior (II) 6% Fe
Fraxinus ornus (II) 5% Fo
Salix alba (I) 12% Sa
Populus nigra (I) 5% Pn
Acer campestre (II) 6% Ac

ARBUSTI (30%)

- Sambucus nigra 6% Sn
Cornus mas 6% Com
Prunus spinosa 6% Prs
Viburnum opulus 3% Vt
Euonymus europaeus 3% Ee
Ligustrum vulgare 6% Lv

IAF - INVERDIMENTO ARBUSTIVO - FLUVIALE
Arbusti vaso 18-24 cm



ARBUSTI

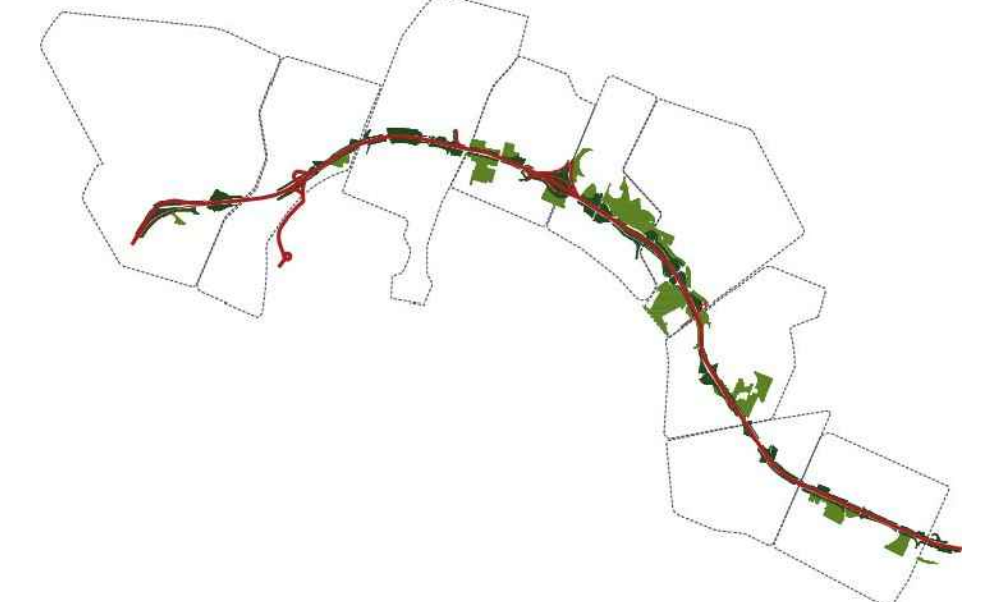
- Sambucus nigra 14% Sn
Cornus mas 16% Com
Prunus spinosa 14% Prs
Viburnum opulus 20% Vt
Euonymus europaeus 20% Ee
Ligustrum vulgare 16% Lv

NOTE GENERALI - FASI ESECUTIVE

LE DIFFERENZE DEVONO ESSERE COMUNICATE IMMEDIATAMENTE AI PROGETTISTI PRIMA DI PROCEDERE. DEVONO ESSERE CONSIDERATE SOLO LE DIMENSIONI UTILIZZATE NEGLI ELABORATI. L'IMPRESA DEVE CONTROLLARE TUTTE LE DIMENSIONI IN OPERA. TUTTE LE DIMENSIONI SONO ESPRESSE IN METRICA.

PRESCRIZIONI ESECUTIVE

KEY-MAP



autostrade per l'italia

AUTOSTRADA (A14) : BOLOGNA-BARI-TARANTO
TRATTO: BOLOGNA BORGO PANIGALE - BOLOGNA SAN LAZZARO

POTENZIAMENTO IN SEDE DEL SISTEMA
AUTOSTRADALE E TANGENZIALE DI BOLOGNA

"PASSANTE DI BOLOGNA"

PROGETTO DEFINITIVO

IT - INTERVENTI TERRITORIALI

SISTEMAZIONI A PARCO - GENERALE

GENERALE

ABACO DELLE OPERE A VERDE

Table with columns for project manager, technical director, and other roles. It lists the names of the individuals responsible for different aspects of the project.

Table with columns for project identification, revision, and other administrative details. It includes codes for project phases and revision numbers.

Table with columns for project manager, technical director, and other roles. It lists the names of the individuals responsible for different aspects of the project.